



IT4 – Part 2

NZ 3D Processing

17 February 2021

cgg.com



INSTITUTE FOR GEOPHYSICS



Passion for Geoscience

- **Objective:**

To further improve deep velocity, especially in the middle and west part.

- **Procedure:**

Following the previous intermediate result, TTI FWI was run to 6Hz. An anomalous inverse Q absorption model was derived from FWI velocity (mainly below the BSR where gas accumulates) and was added to the FWI velocity only inversion. This approach gives a FWI velocity that results in flatter gathers in the gas zone.

- **Display:**

Velocity, migrated depth full stack & gathers.

- **Observation and Recommendation:**

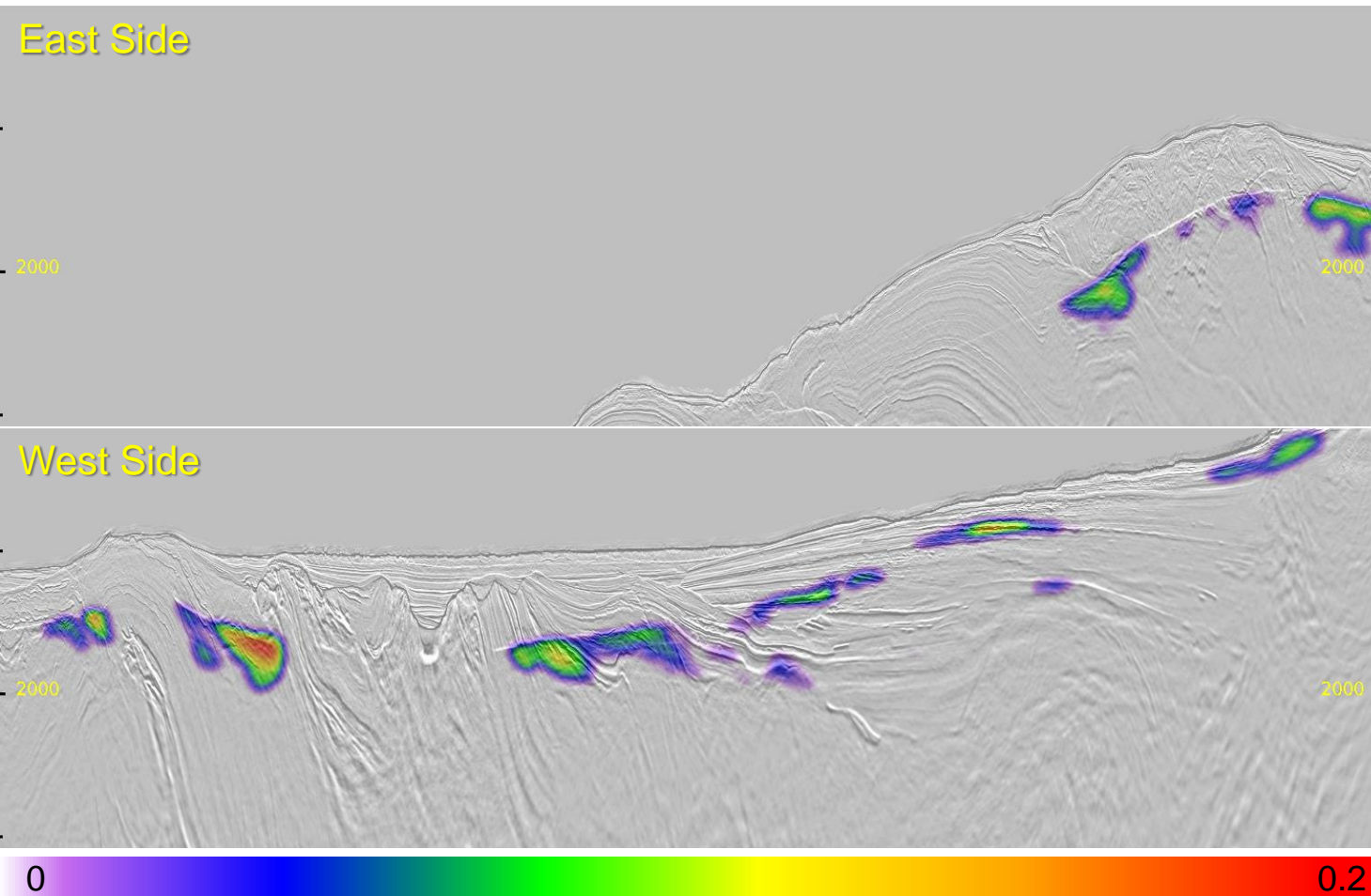
In the low S/N area from middle to west of the survey, the velocity in the deeper area is more geological and results in a better imaging of the central dipping events. We'll continue to focus this area for better velocity.

Velocity Model



Inline 436: Anomalous Inverse Q Model

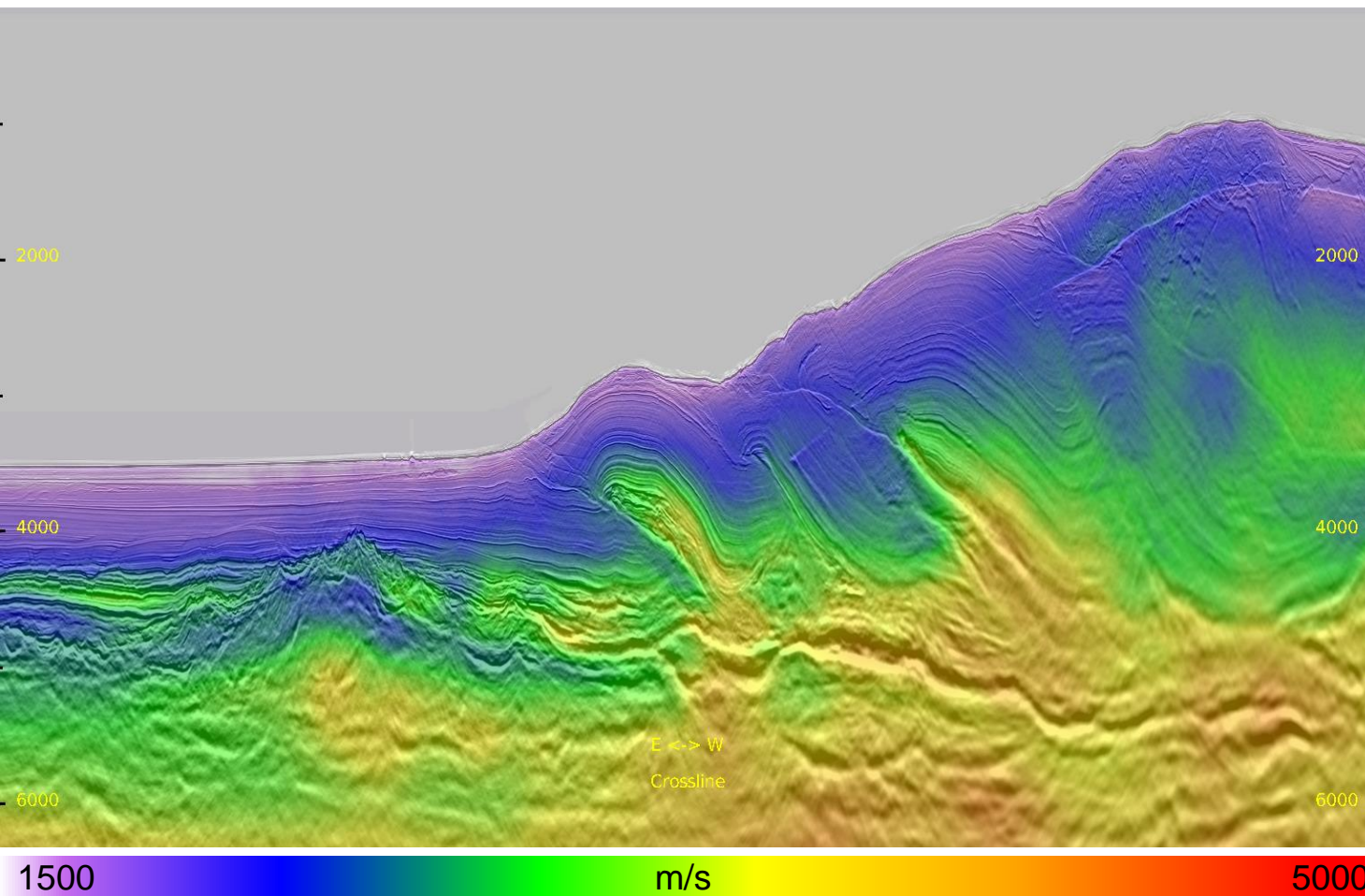
4



- An anomalous inverse Q Model was derive from the FWI velocity.

Inline 436 Eest: Previous Velocity

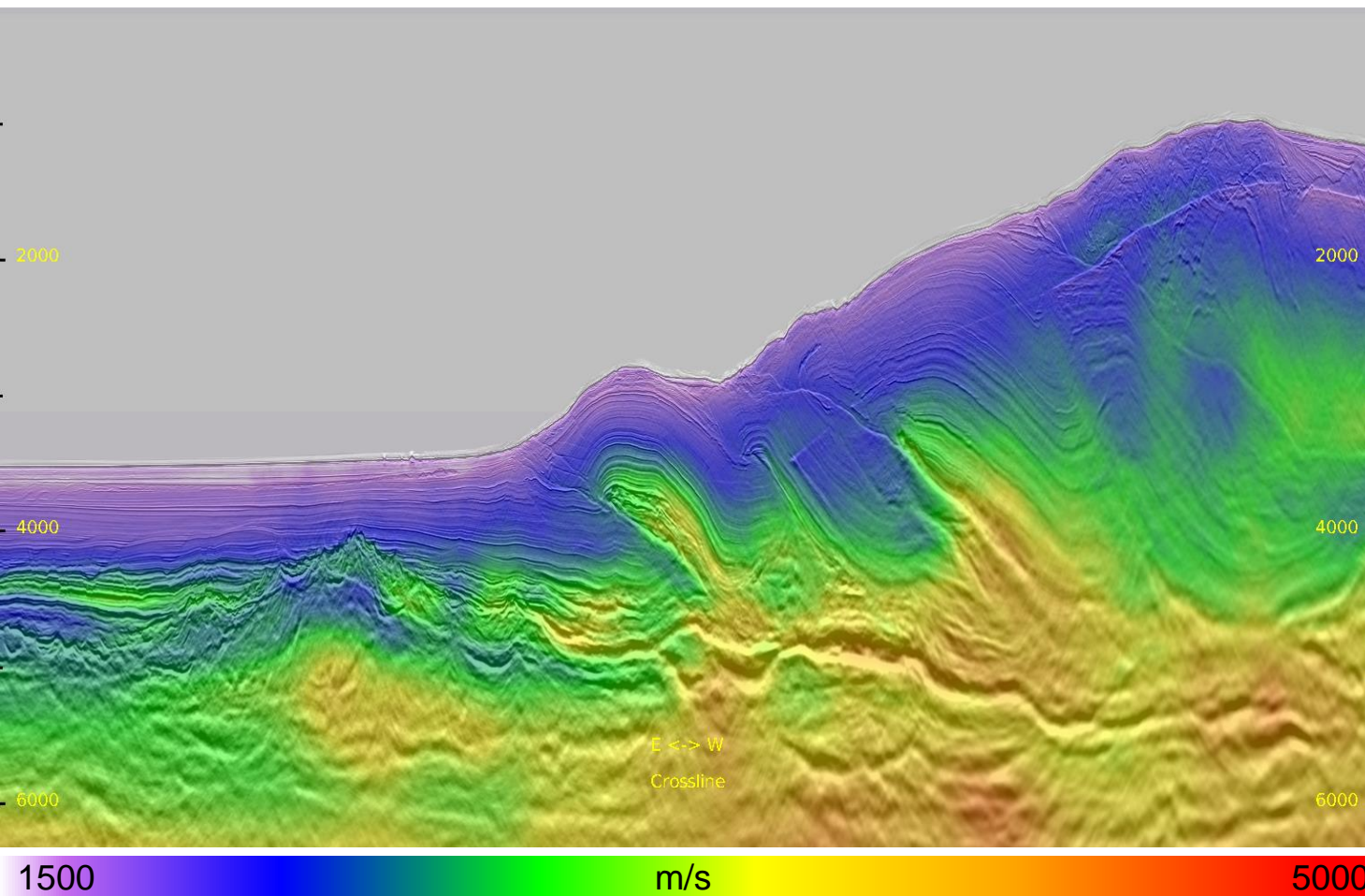
5



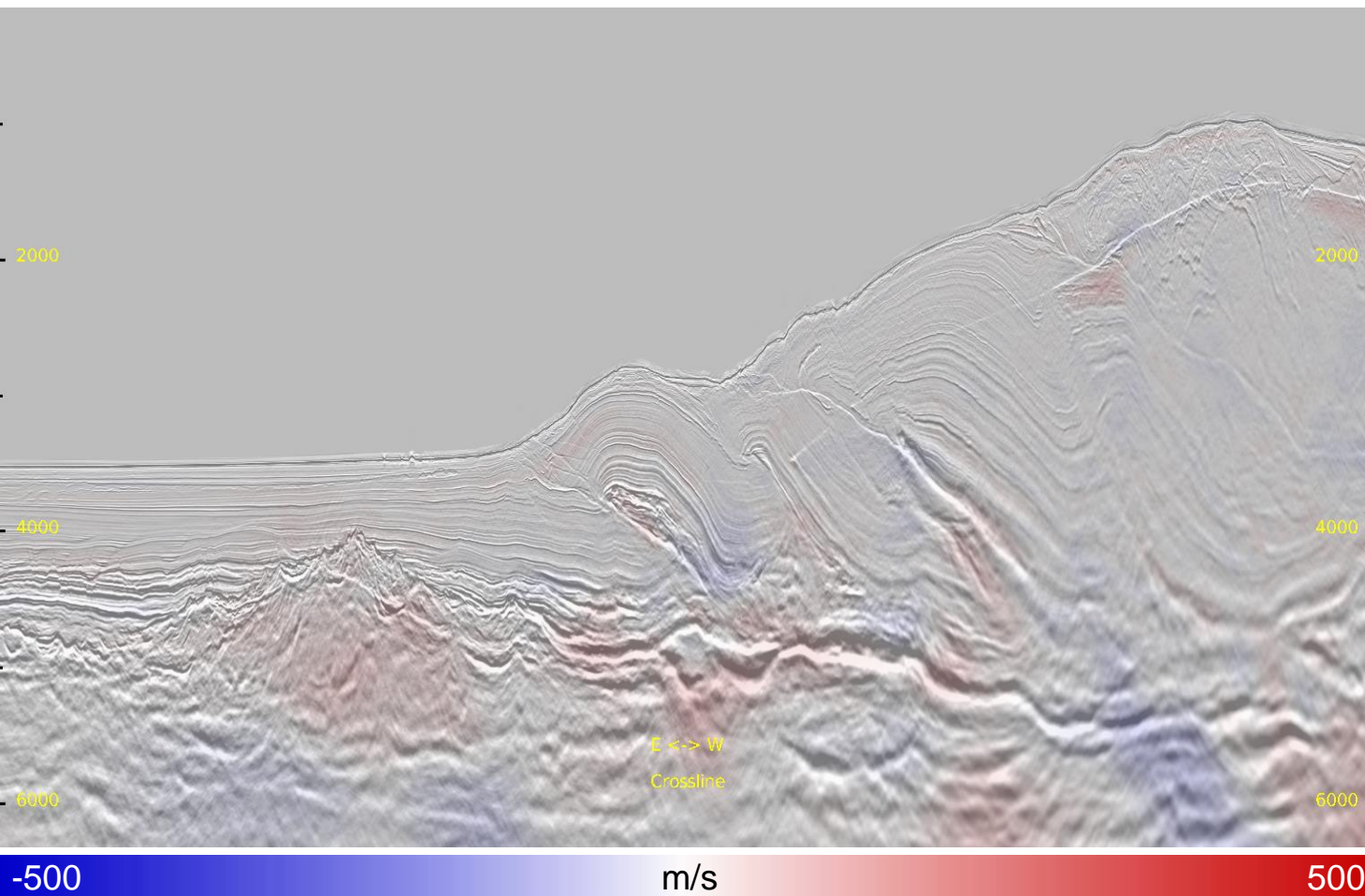
- Previous preliminary FWI velocity

Inline 436 Eest: Current Velocity

6



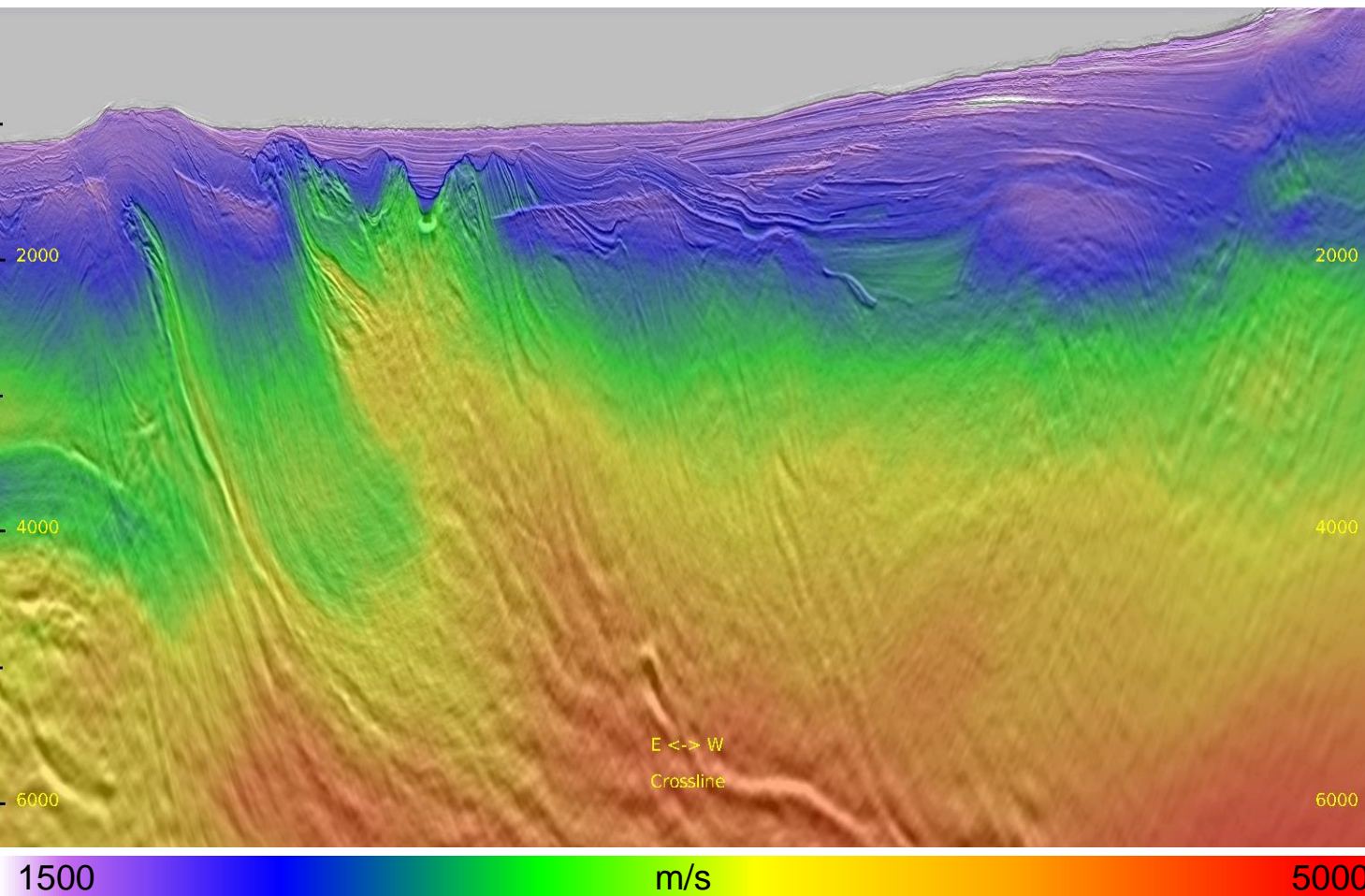
- Current TTI FWI velocity considering anomalous Q absorption.



- Velocity perturbation shows a increase of velocity below the BSR.

Inline 436 West: Previous Velocity

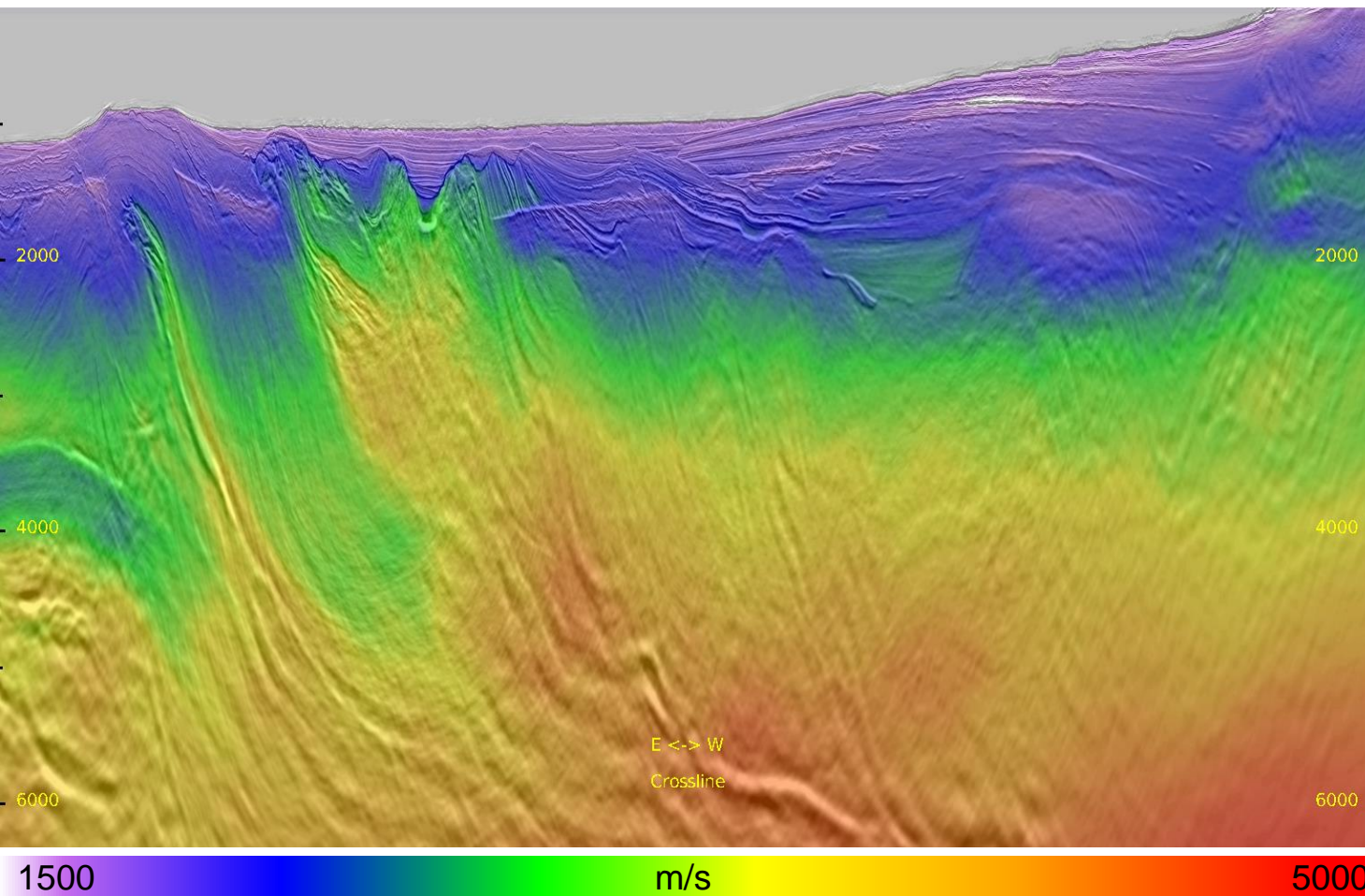
8



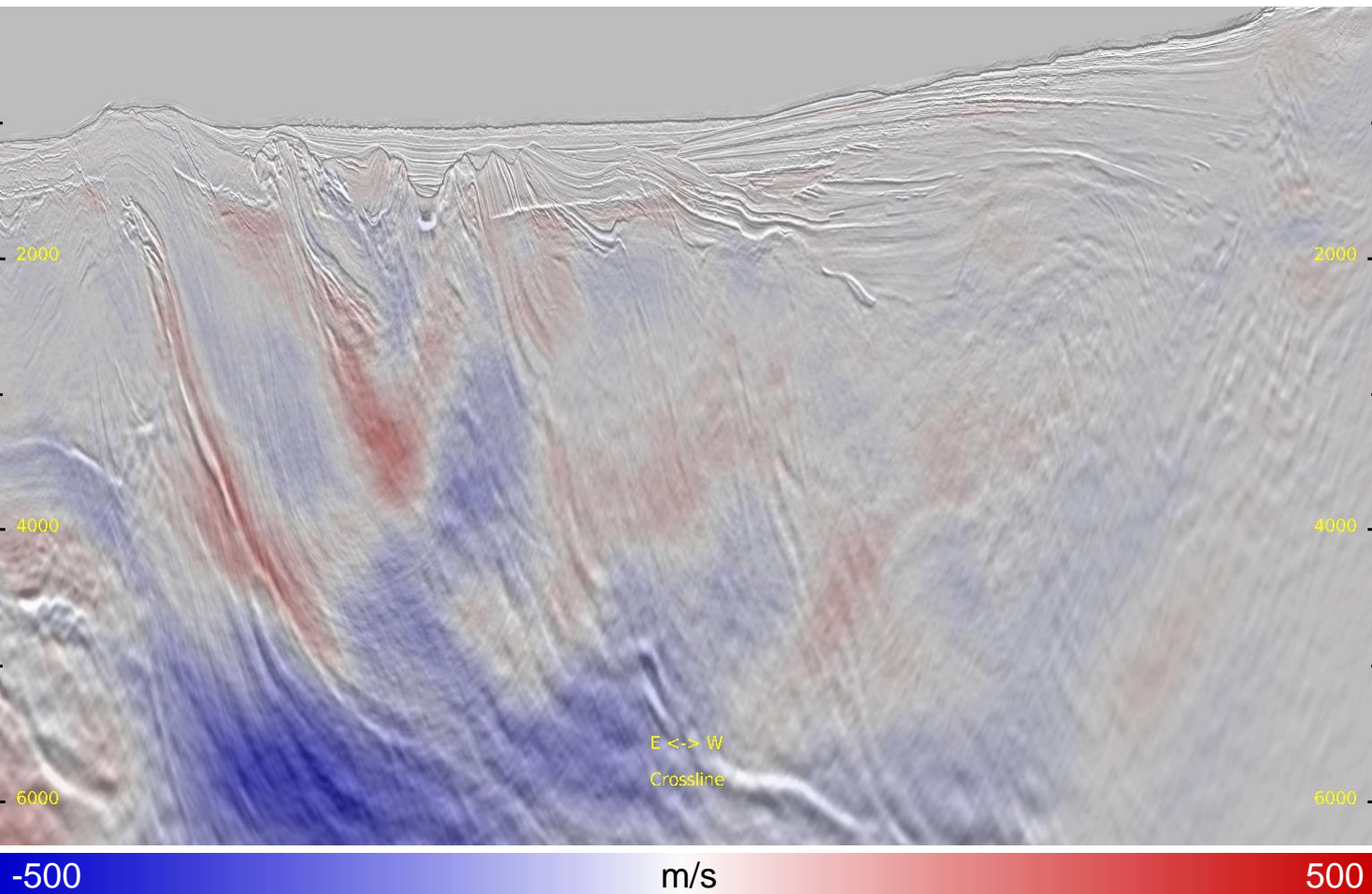
- Previous preliminary FWI velocity

Inline 436 West: Current Velocity

9



- Current TTI FWI velocity considering anomalous Q effect.



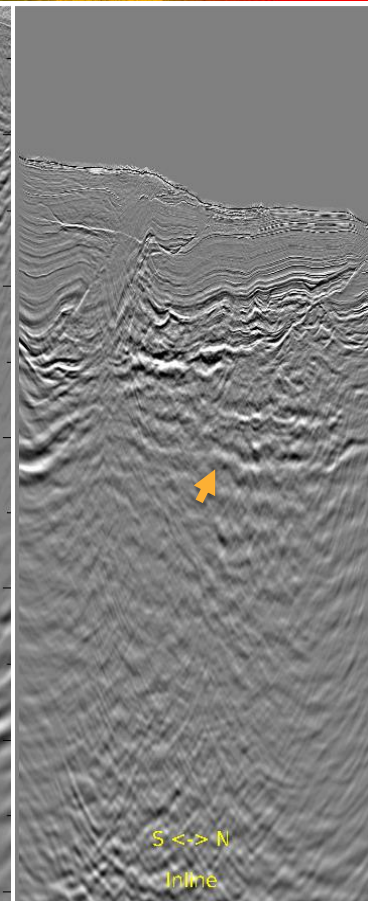
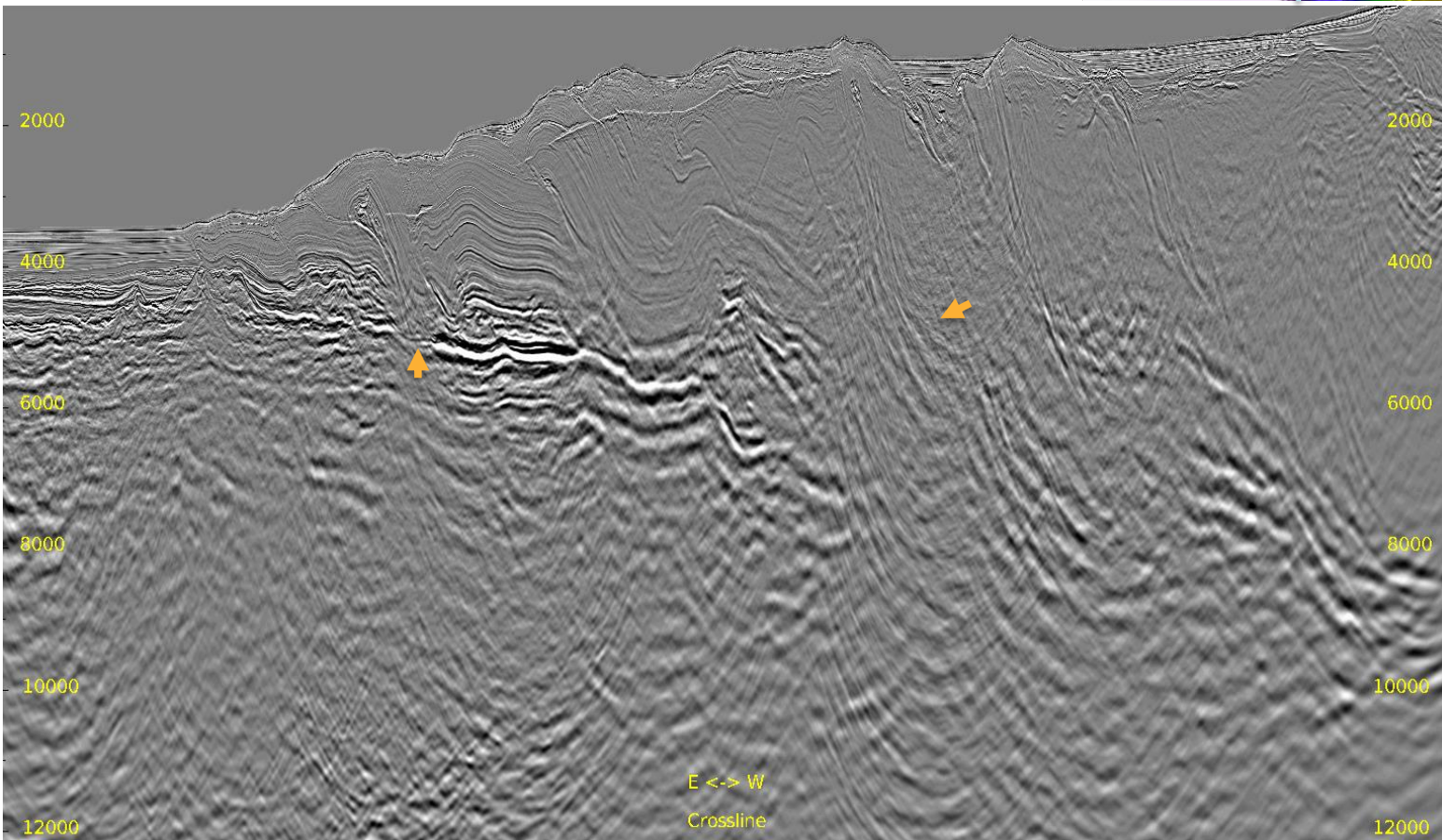
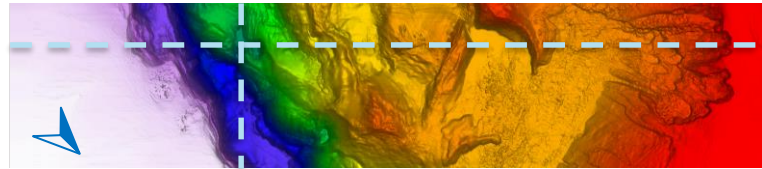
- Velocity perturbation shows an increase of velocity below the BSR and in the gas zone.

Kirchhoff Depth Migration



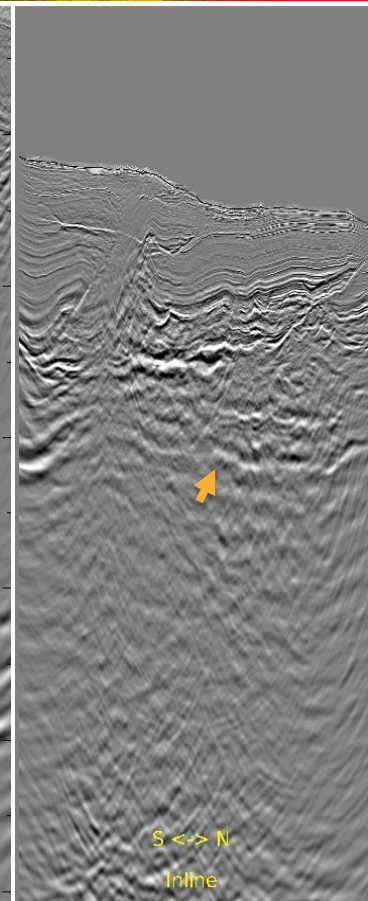
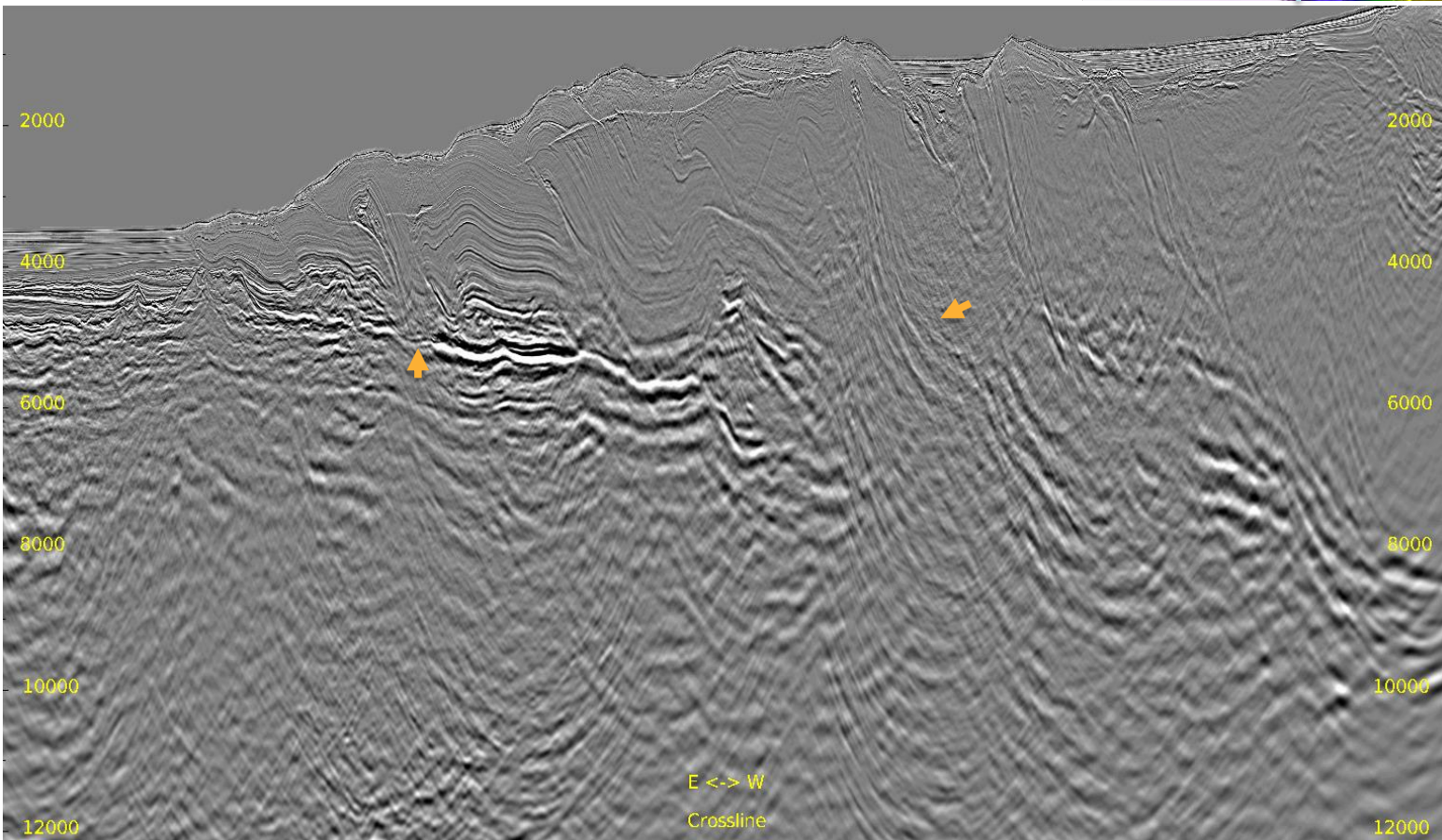
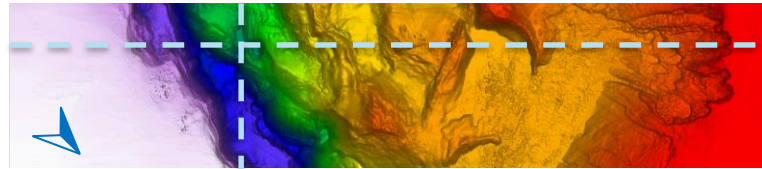
Full Stack: Previous Result

Inline 236 & Crossline 1774



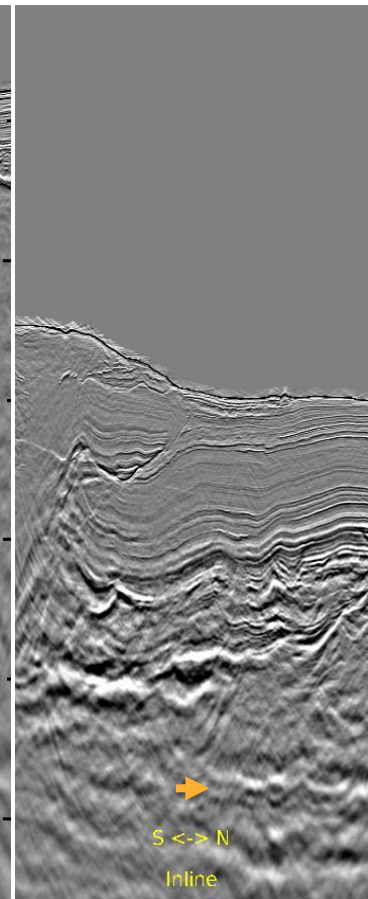
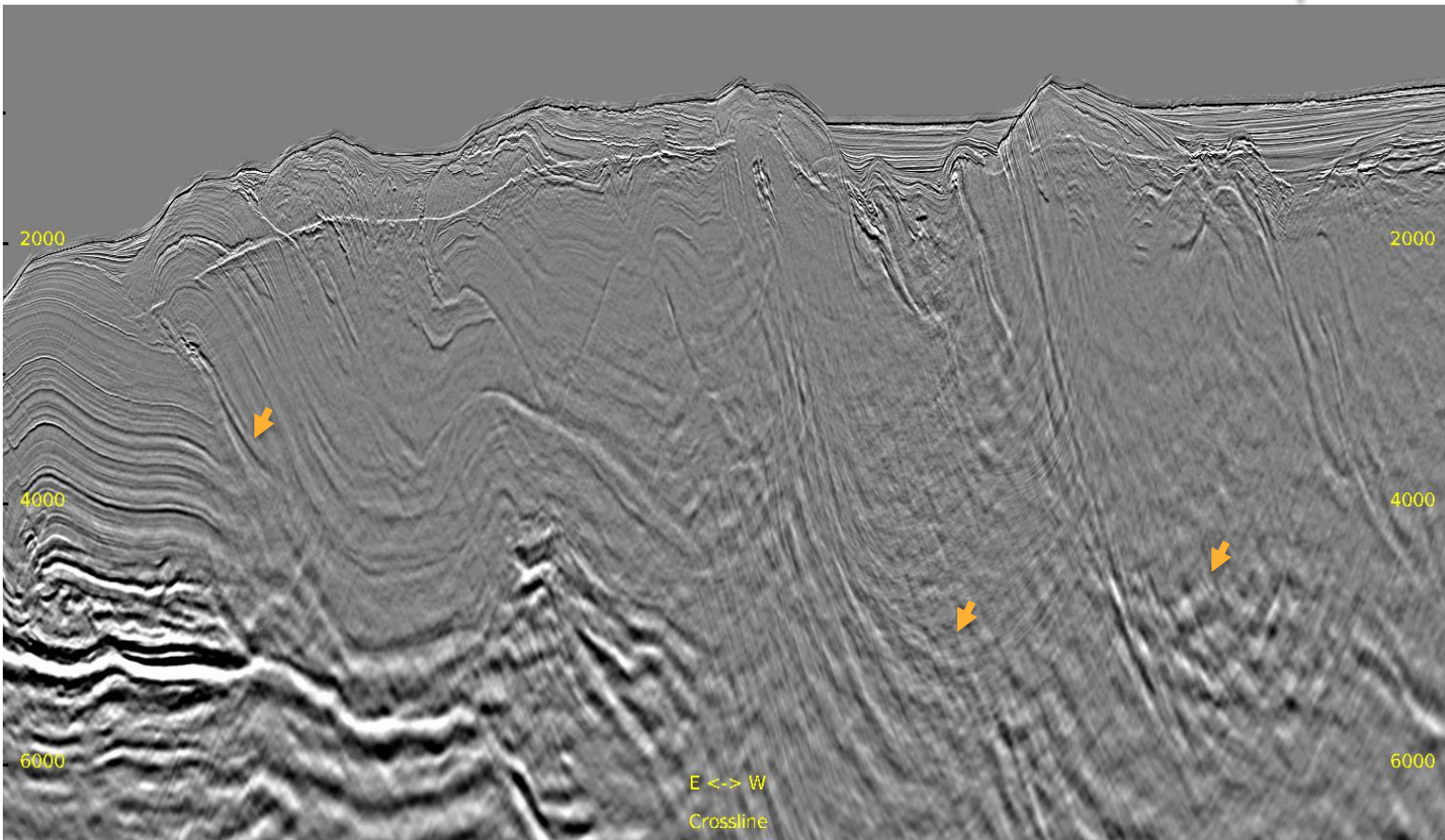
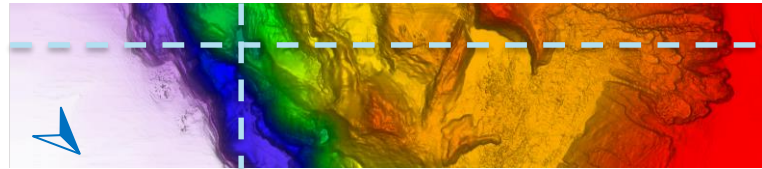
Full Stack: Current Result

Inline 236 & Crossline 1774



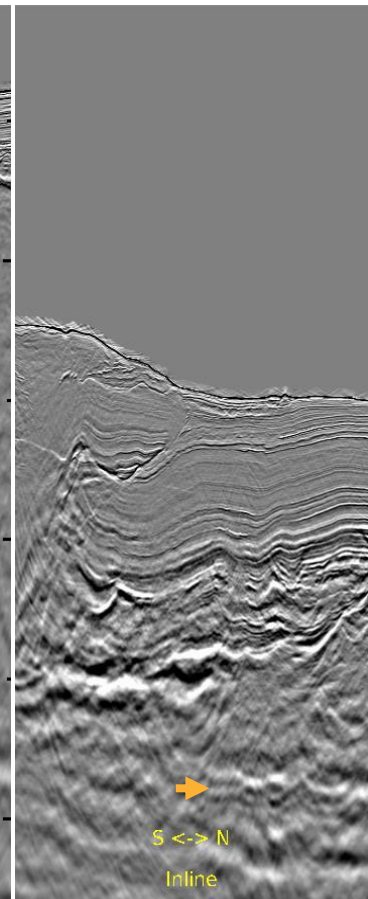
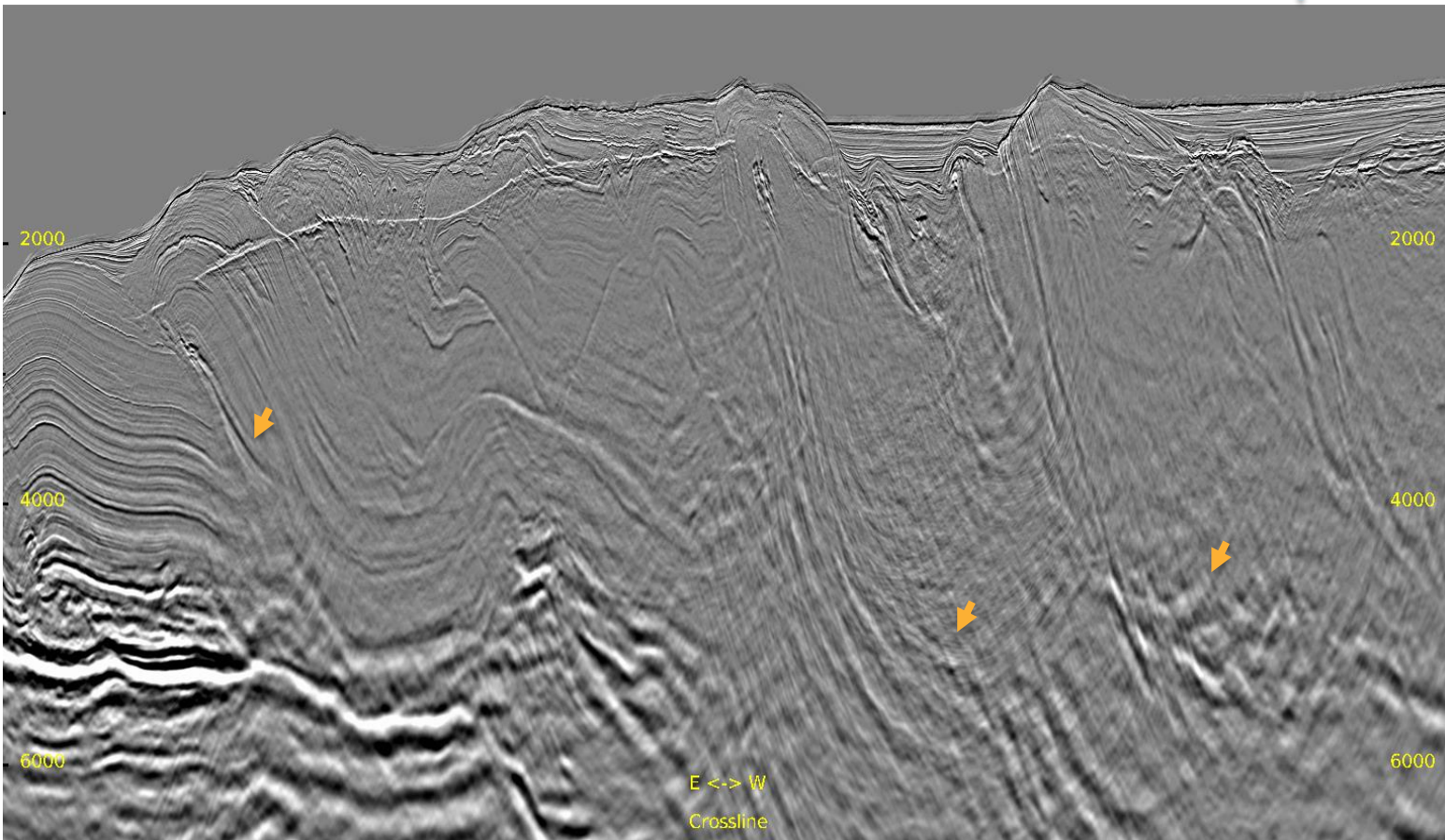
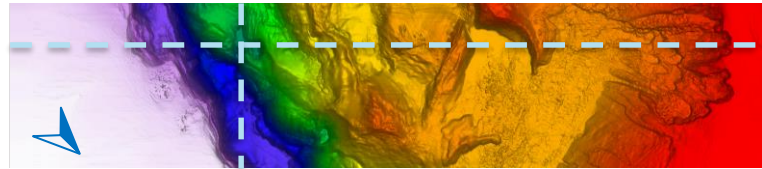
Zoomed Full Stack: Previous Result

Inline 236 & Crossline 1774



Zoomed Full Stack: Current Result

Inline 236 & Crossline 1774

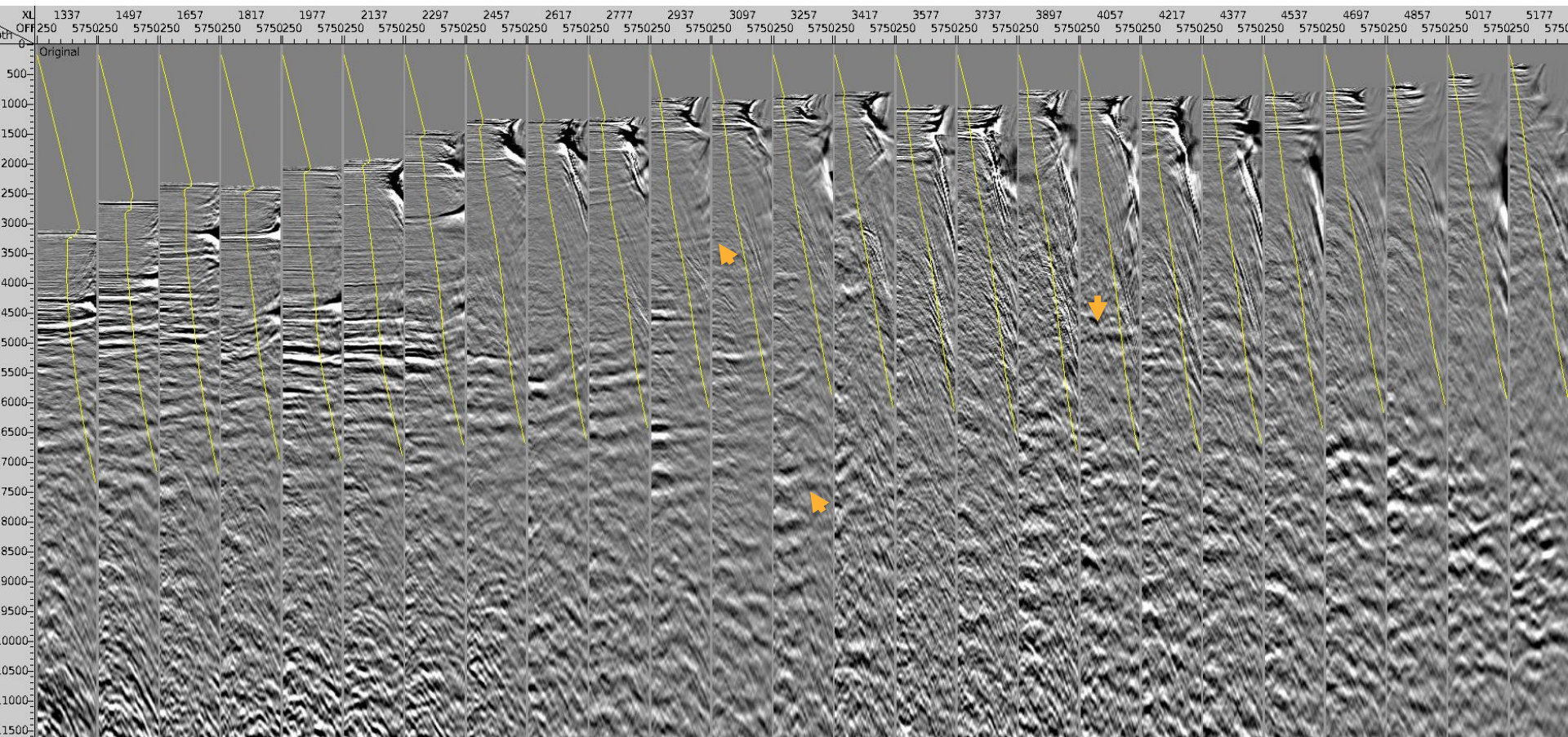




Inline 236 CDP Gathers: Previous Result

— 35° Mute

16

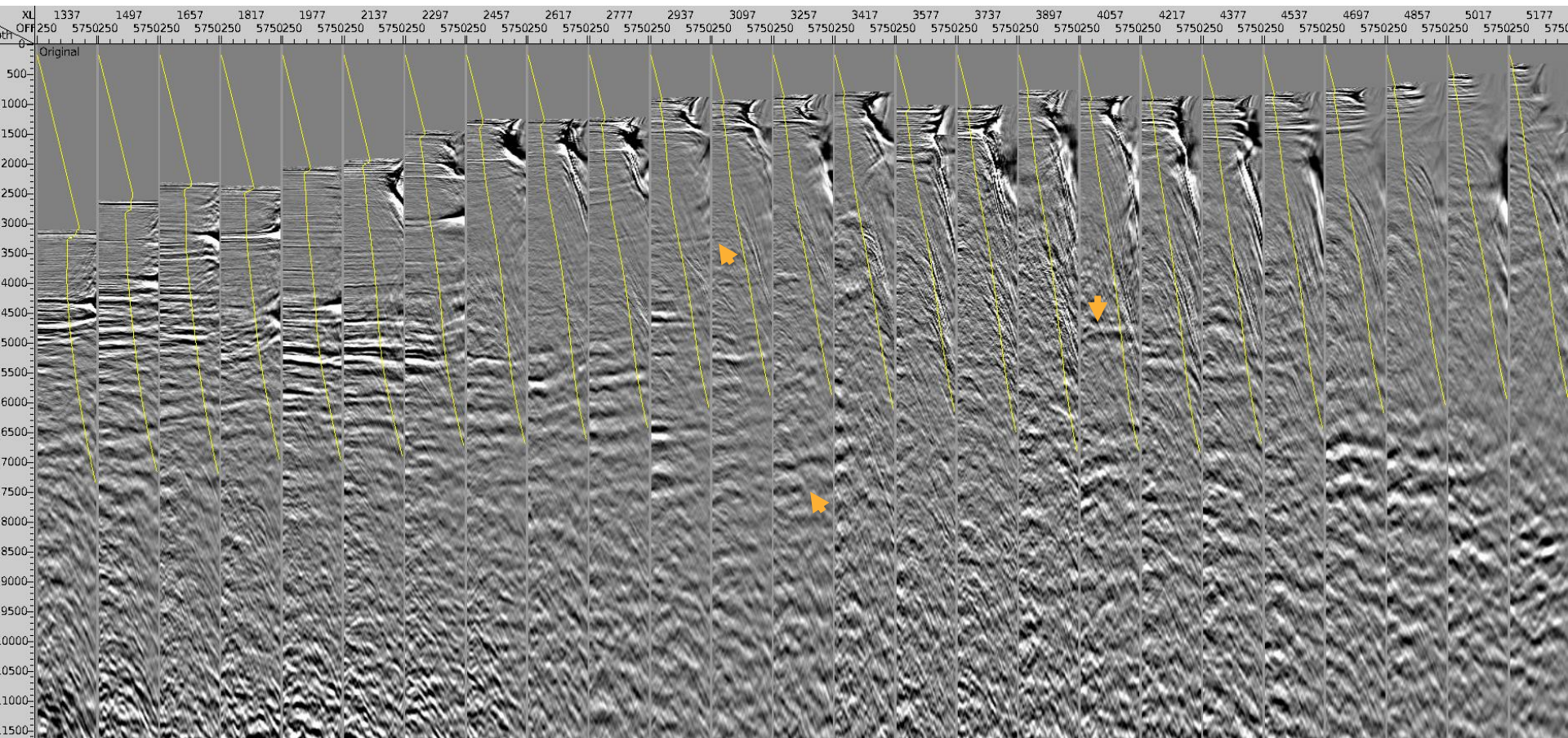




Inline 236 CDP Gathers: Current Result

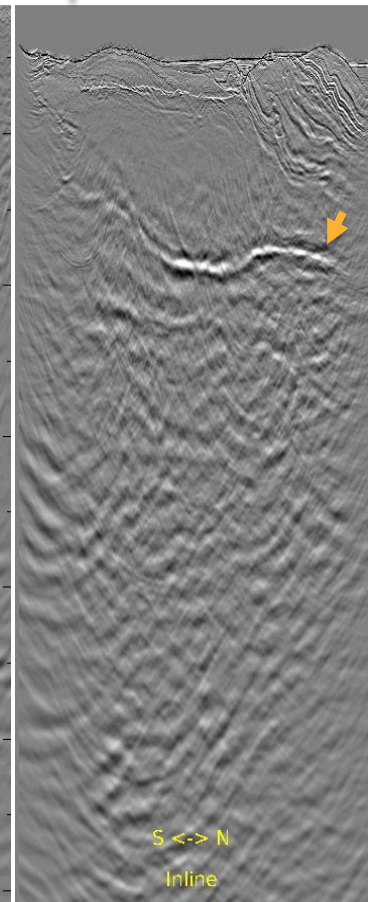
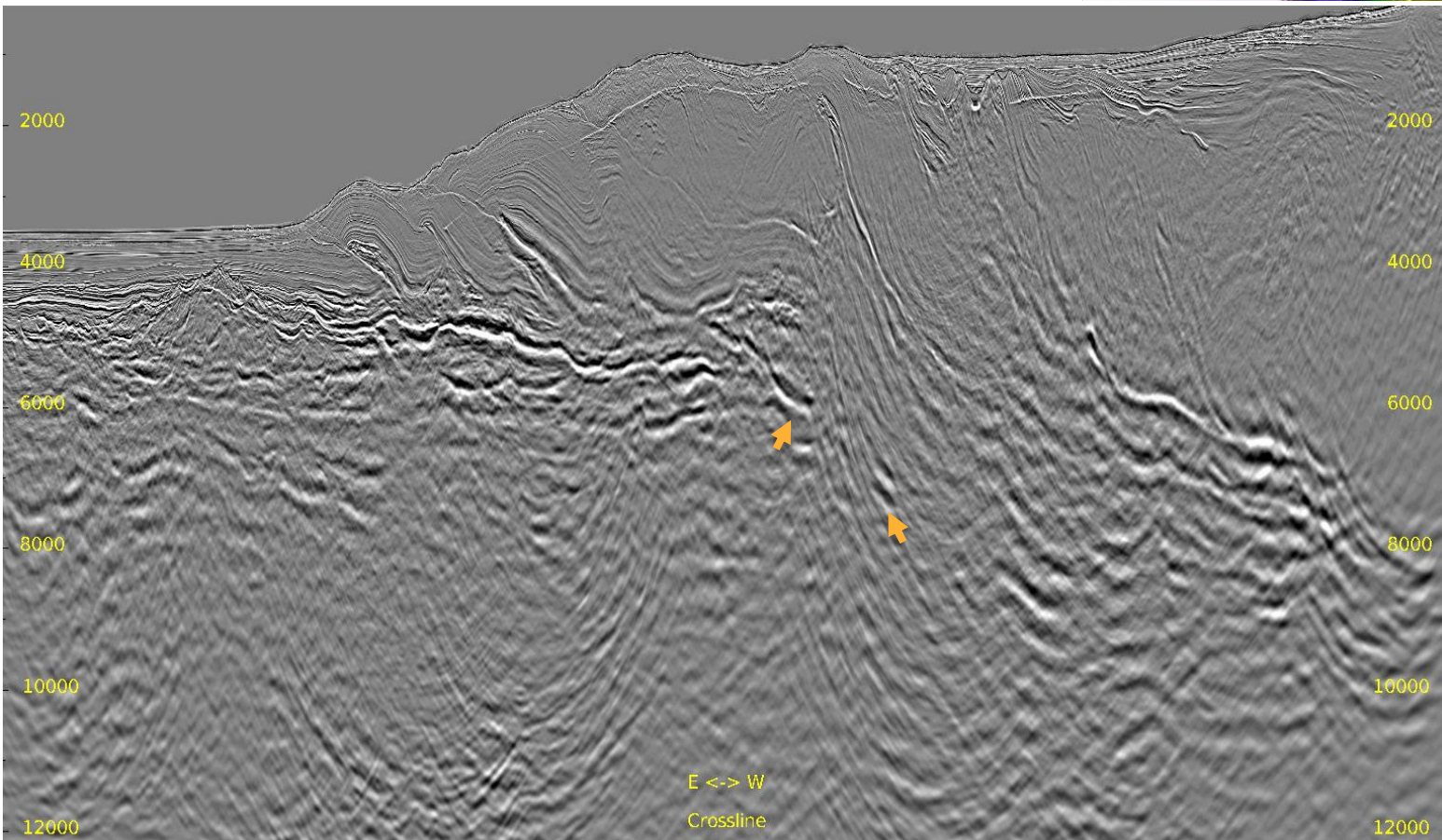
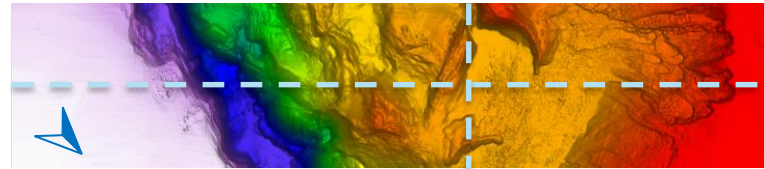
— 35° Mute

17



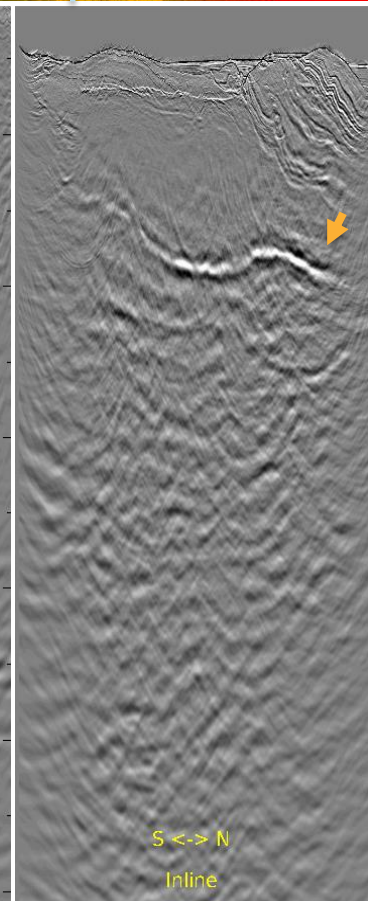
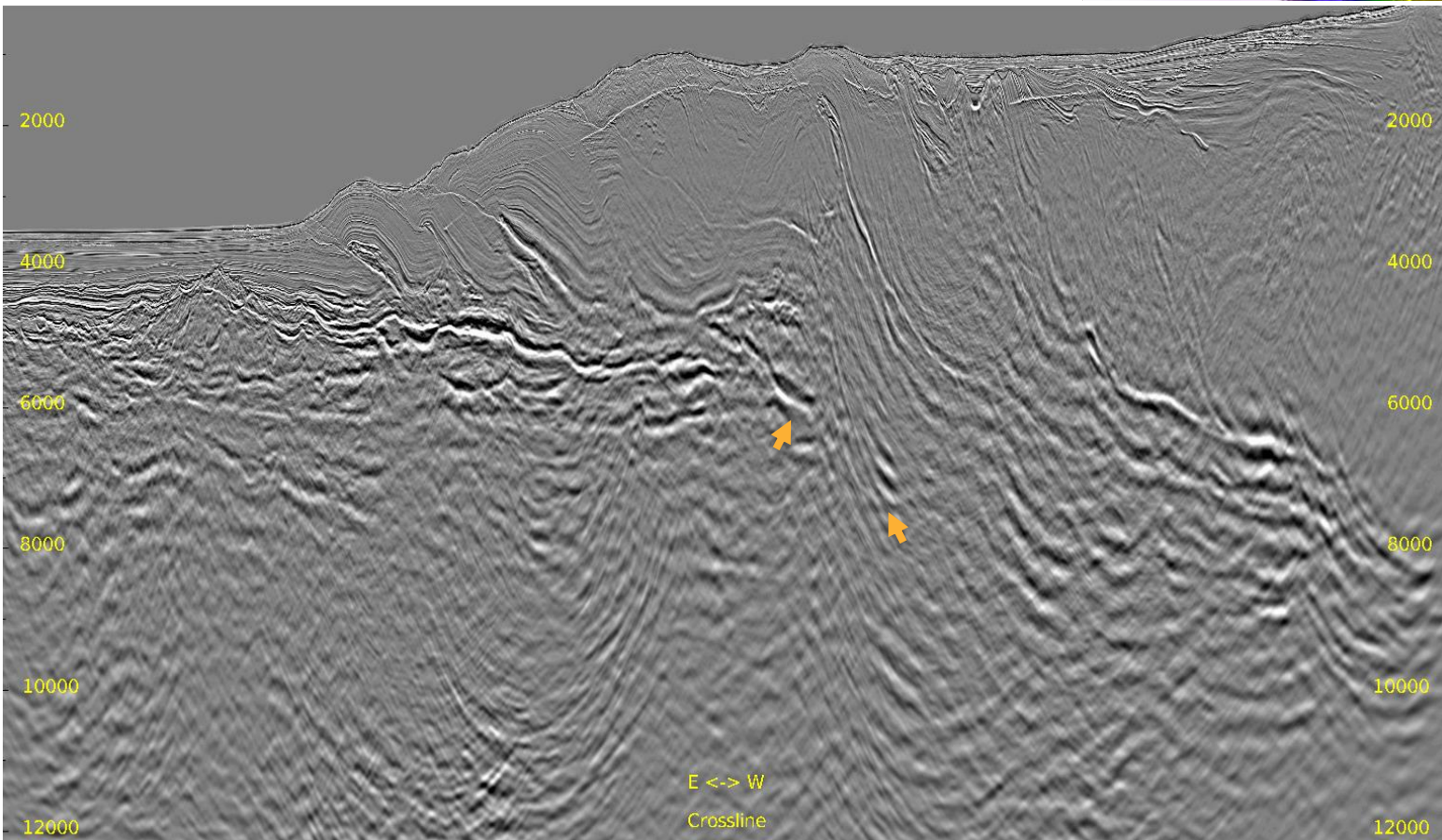
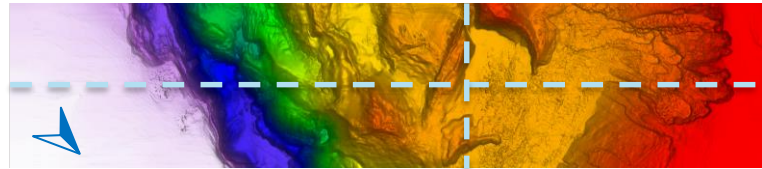
Full Stack: Previous Result

Inline 436 & Crossline 3423



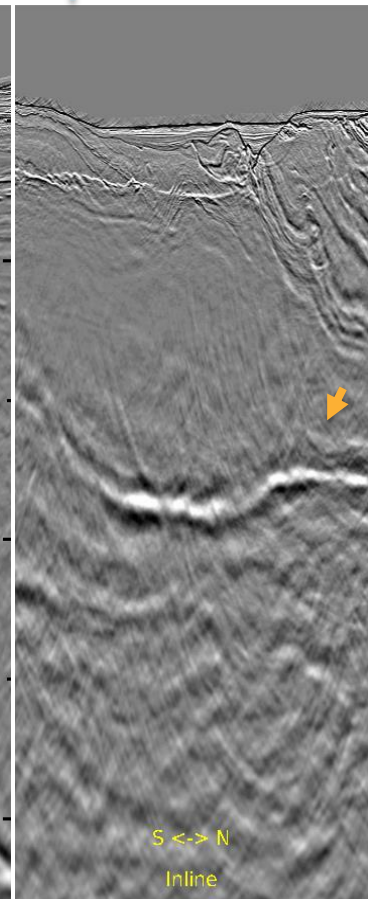
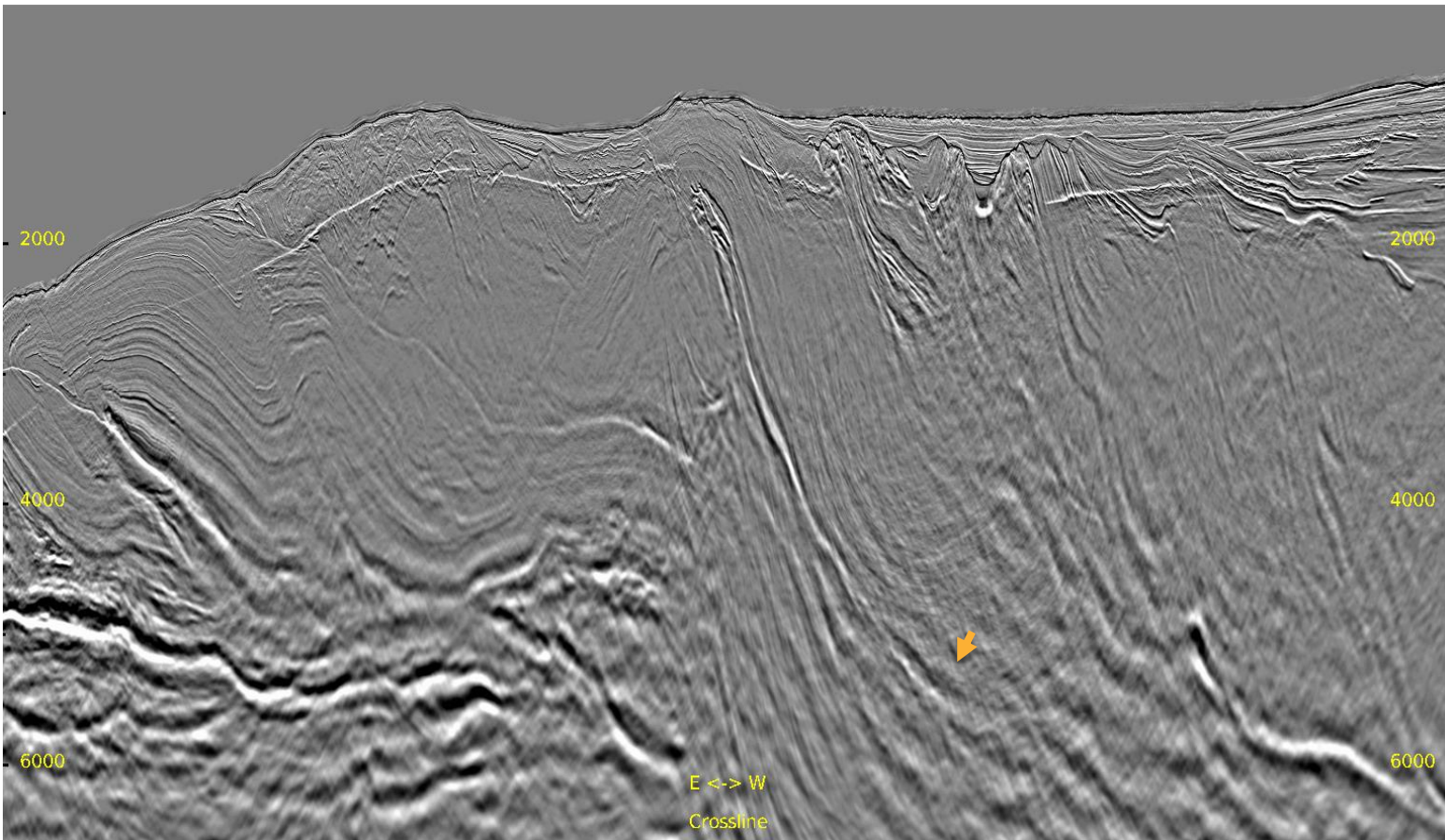
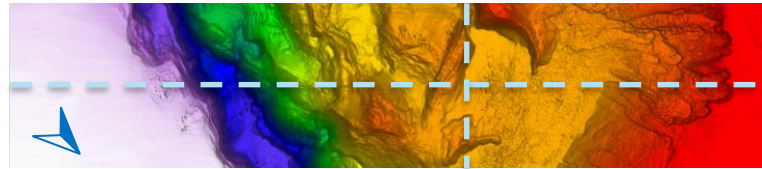
Full Stack: Current Result

Inline 436 & Crossline 3423



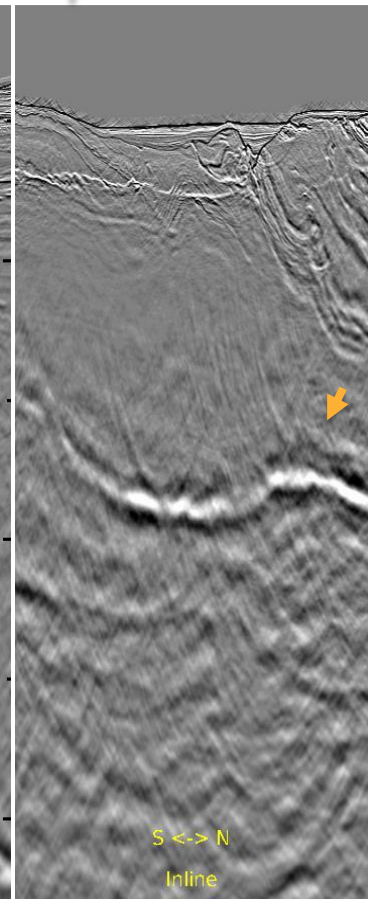
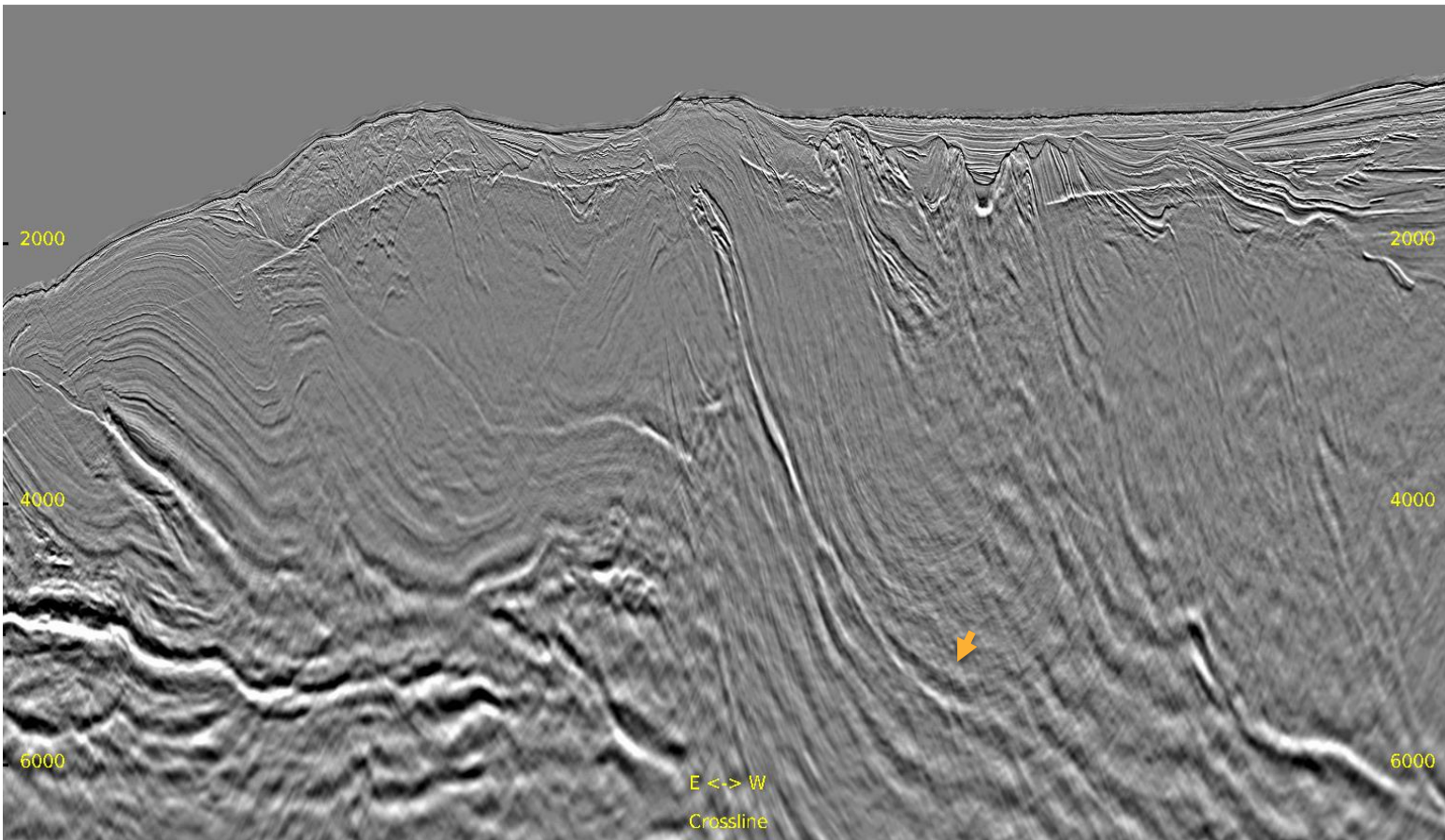
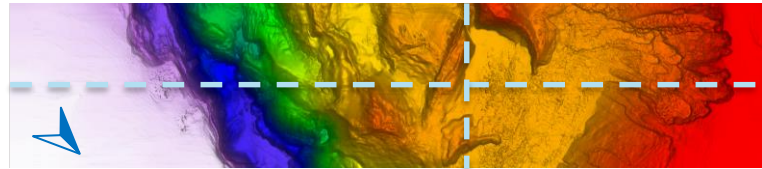
Zoomed Full Stack: Previous Result

Inline 436 & Crossline 3423



Zoomed Full Stack: Current Result

Inline 436 & Crossline 3423

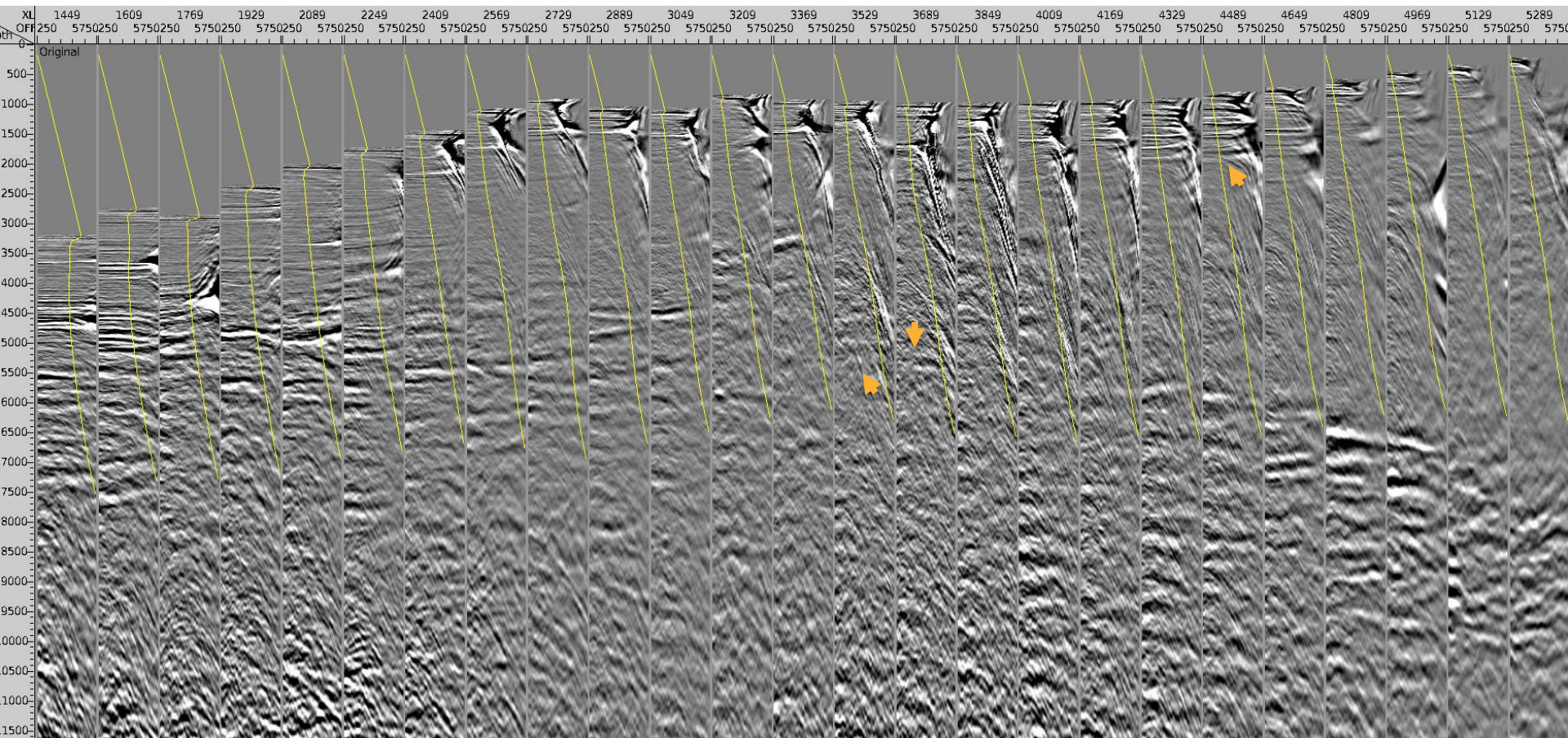




Inline 436 CDP Gathers: Previous Result

— 35° Mute

22

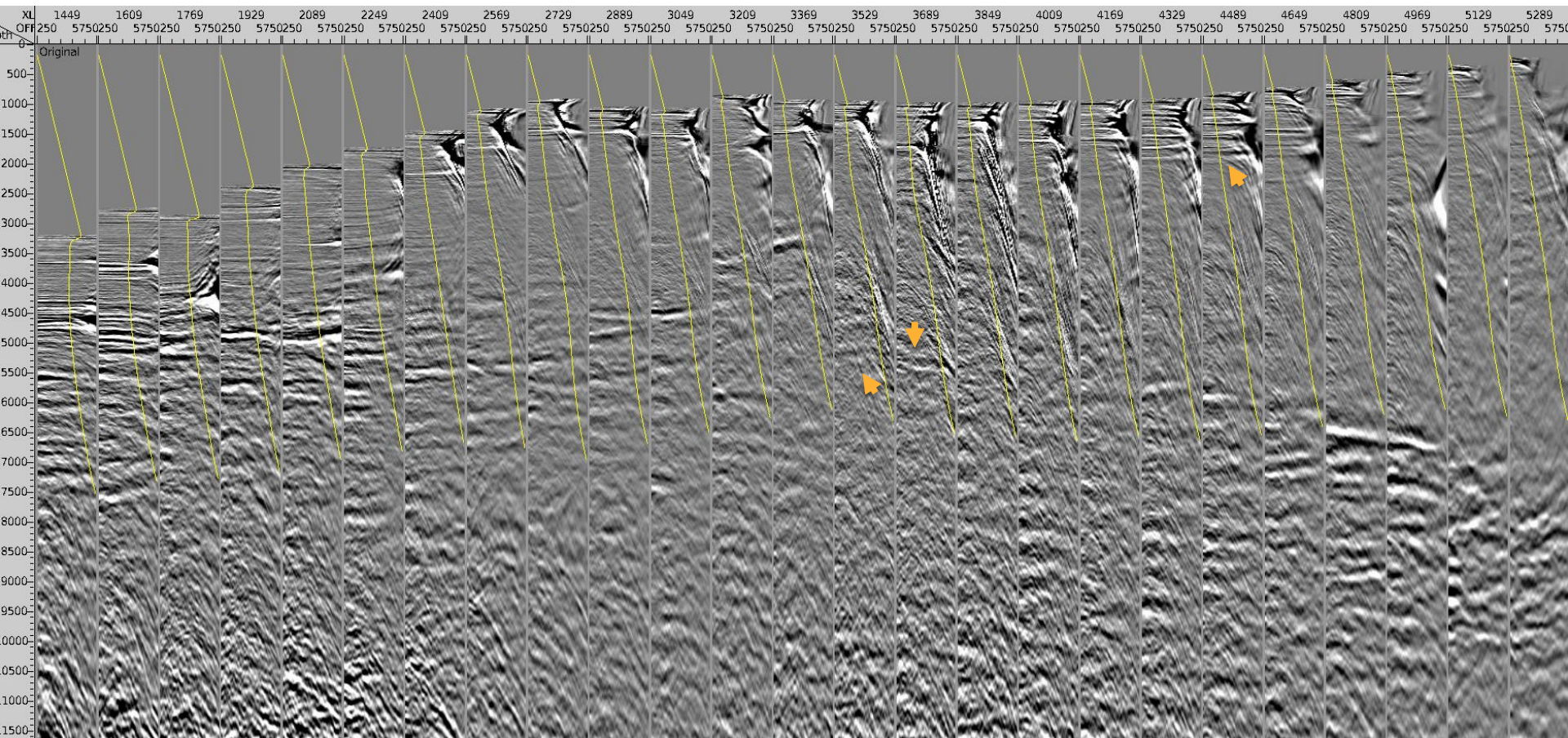




Inline 436 CDP Gathers: Current Result

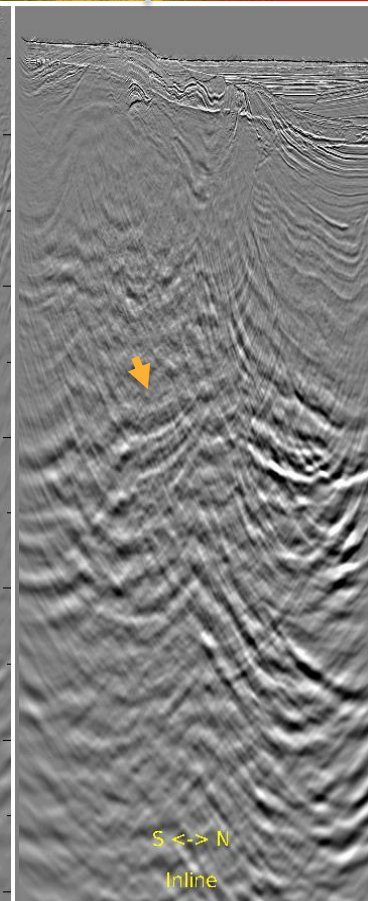
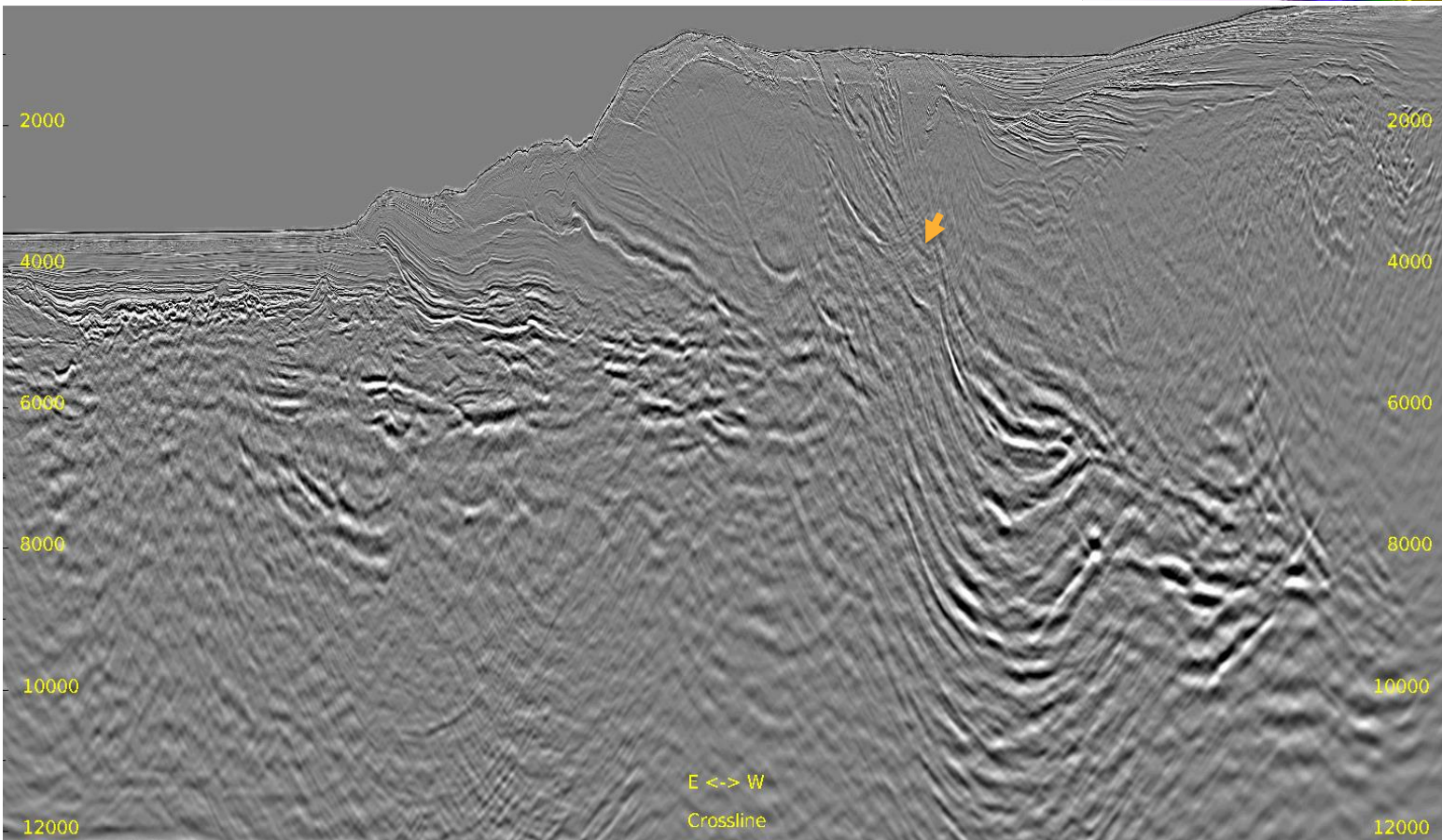
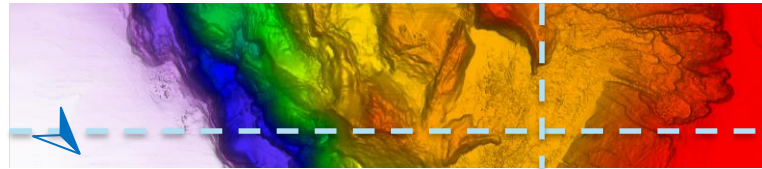
— 35° Mute

23



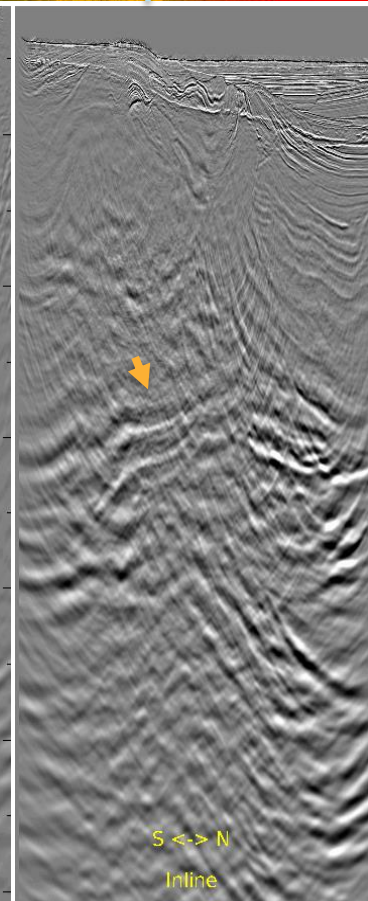
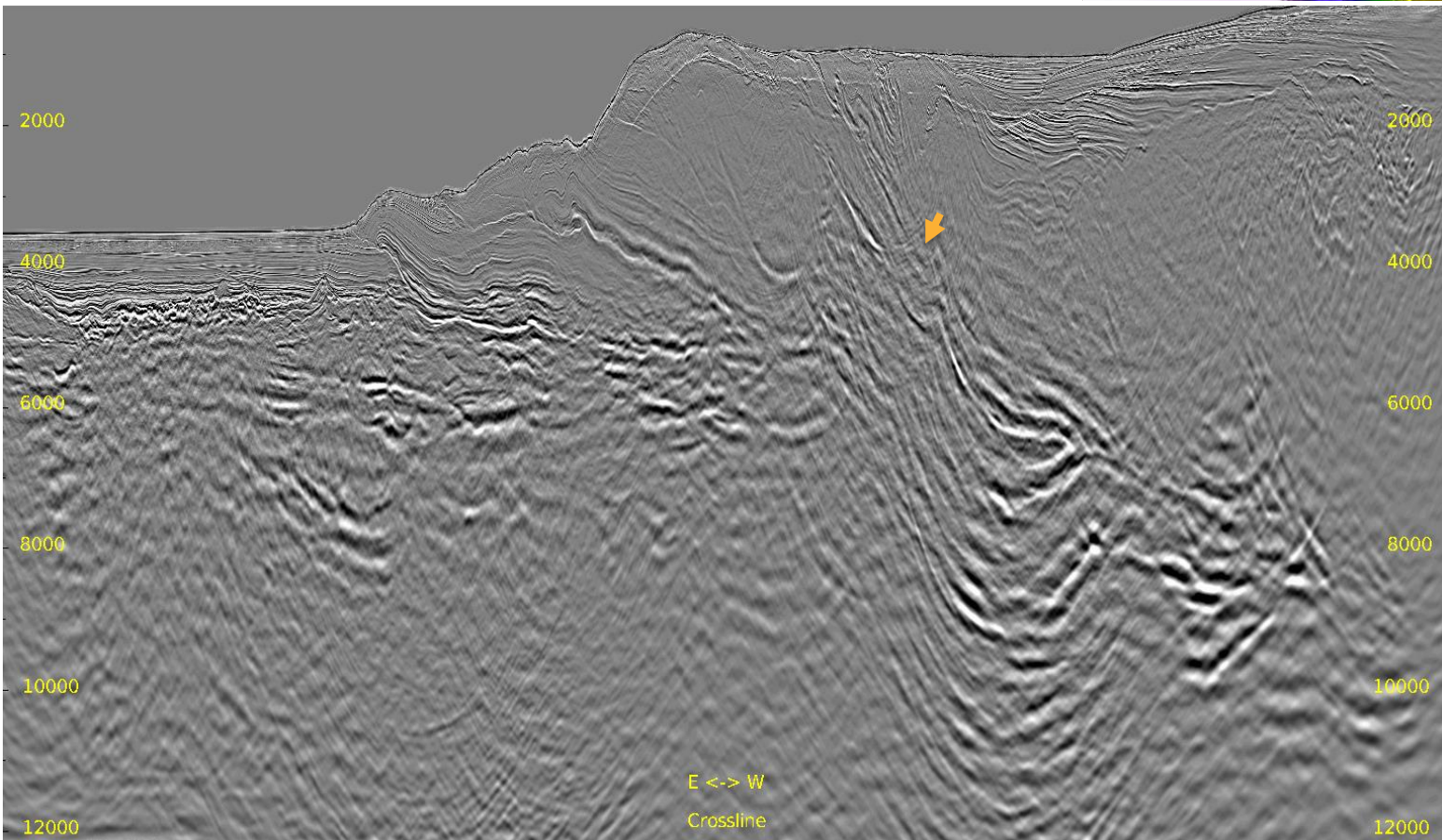
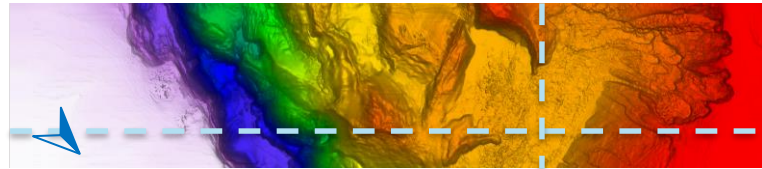
Full Stack: Previous Result

Inline 636 & Crossline 3944



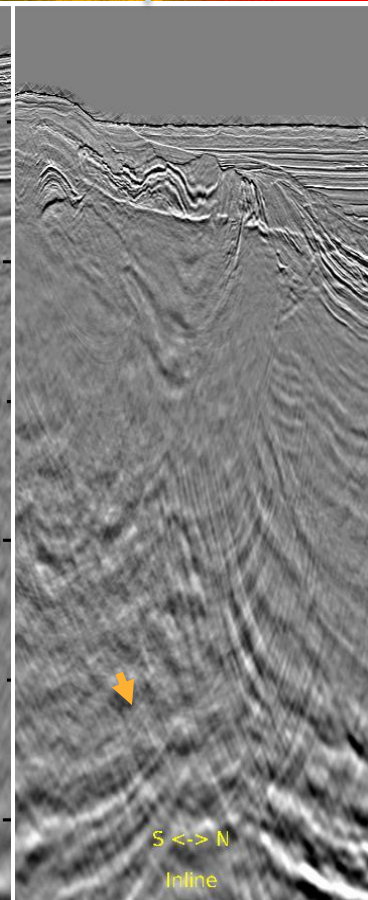
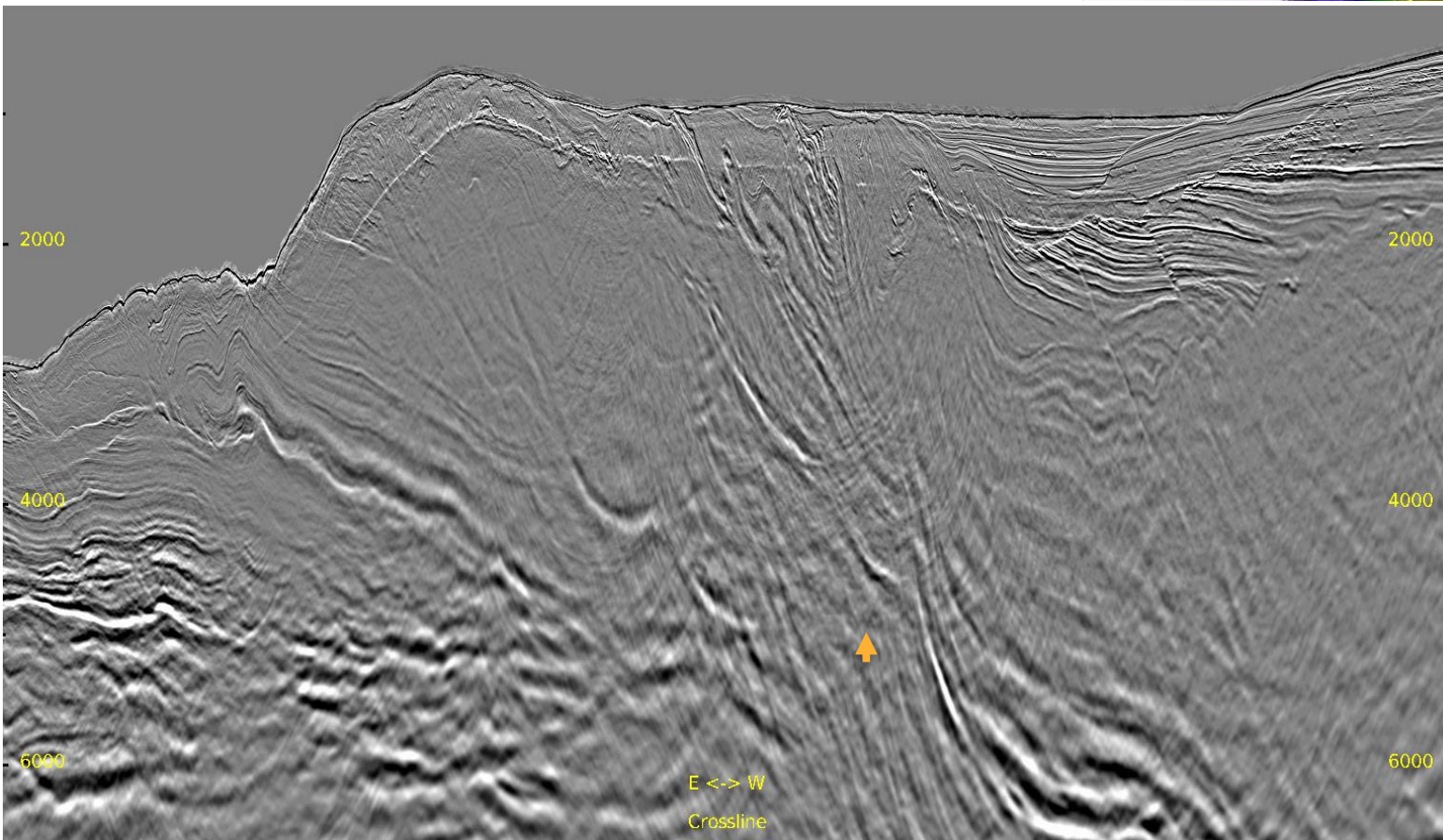
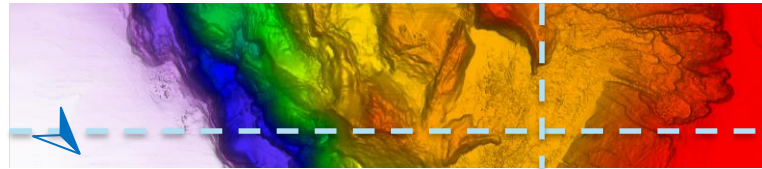
Full Stack: Current Result

Inline 636 & Crossline 3944



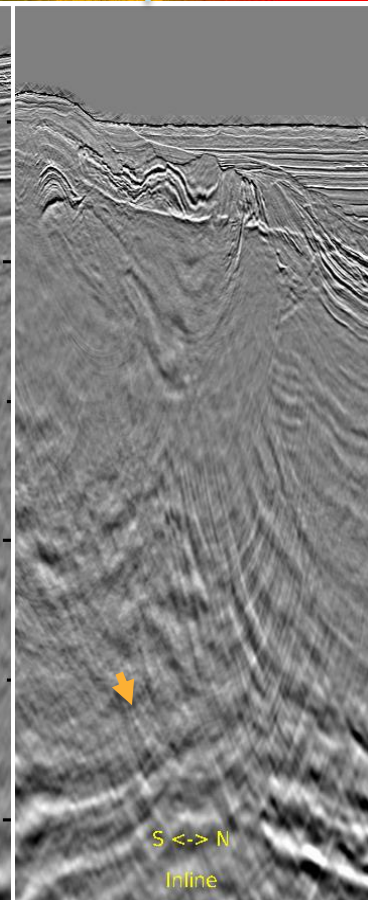
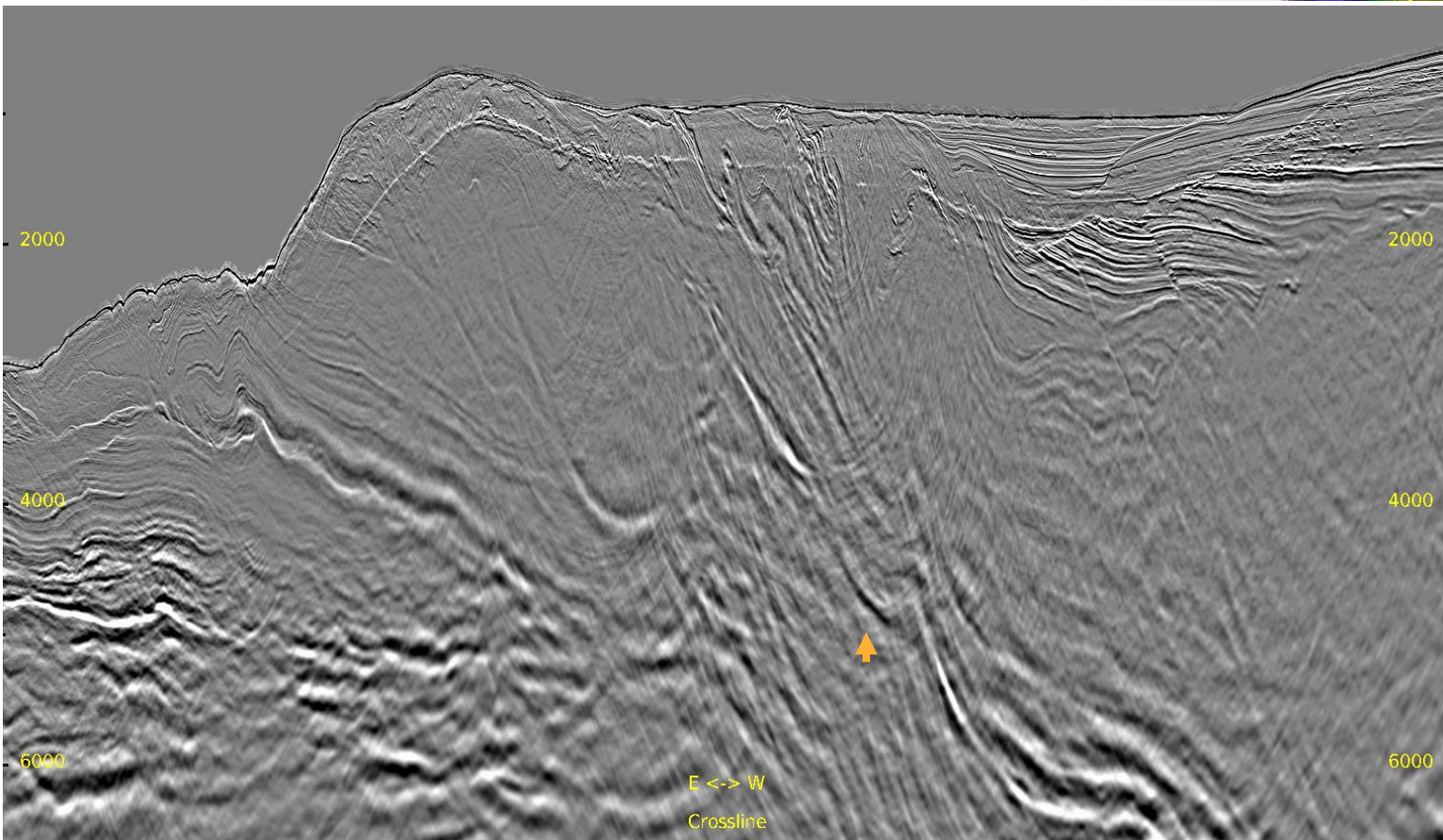
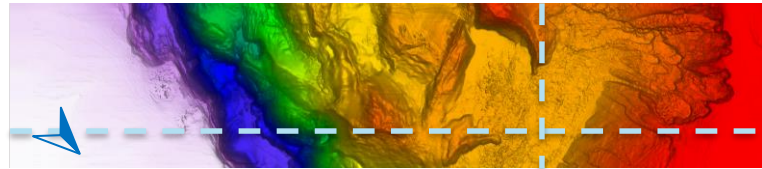
Zoomed Full Stack: Previous Result

Inline 636 & Crossline 3944



Zoomed Full Stack: Current Result

Inline 636 & Crossline 3944

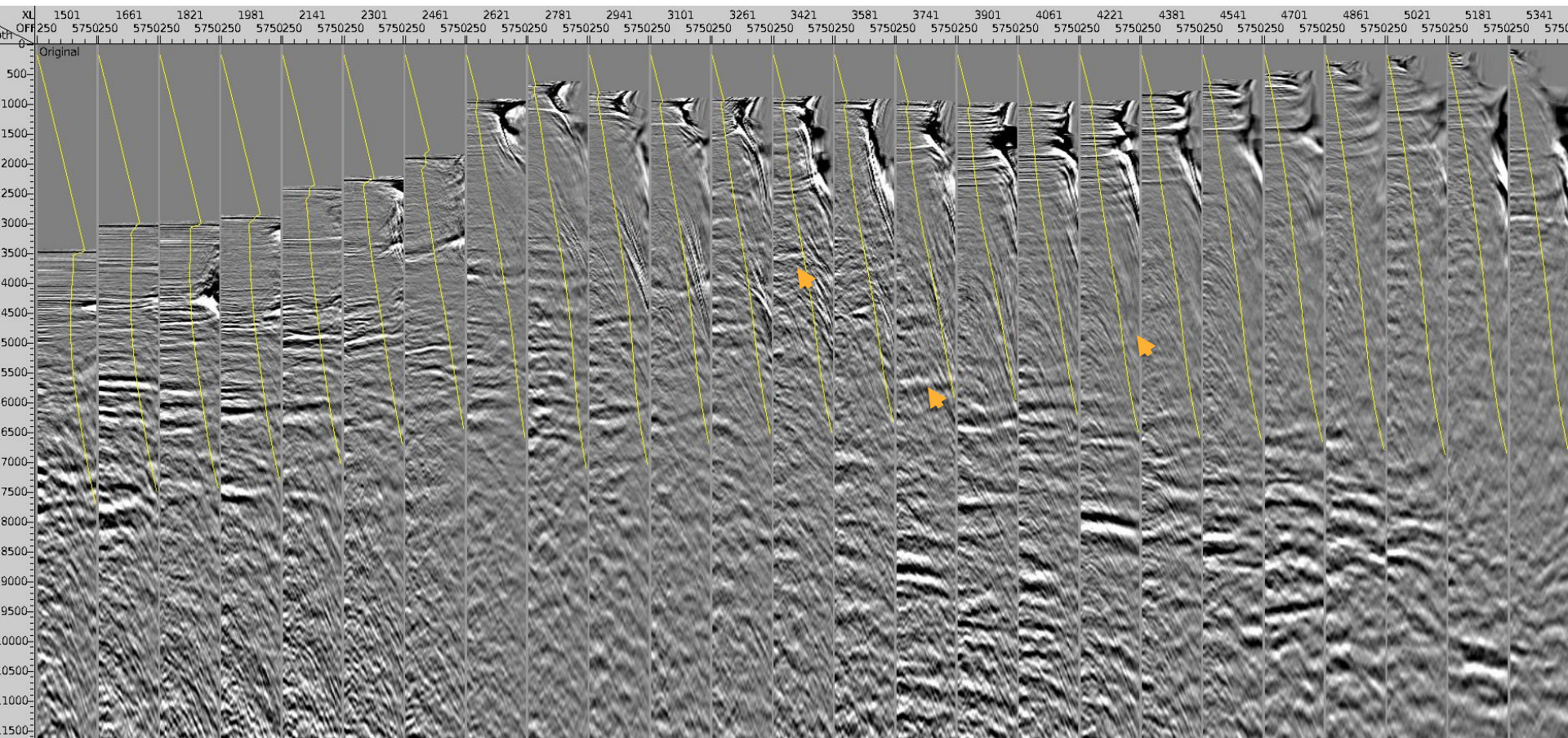




Inline 636 CDP Gathers: Previous Result

— 35° Mute

28





Inline 636 CDP Gathers: Current Result

— 35° Mute

29

