



IT1 – Unconformity Surfaces

NZ 3D Processing

04 December 2020

cgg.com



INSTITUTE FOR GEOPHYSICS

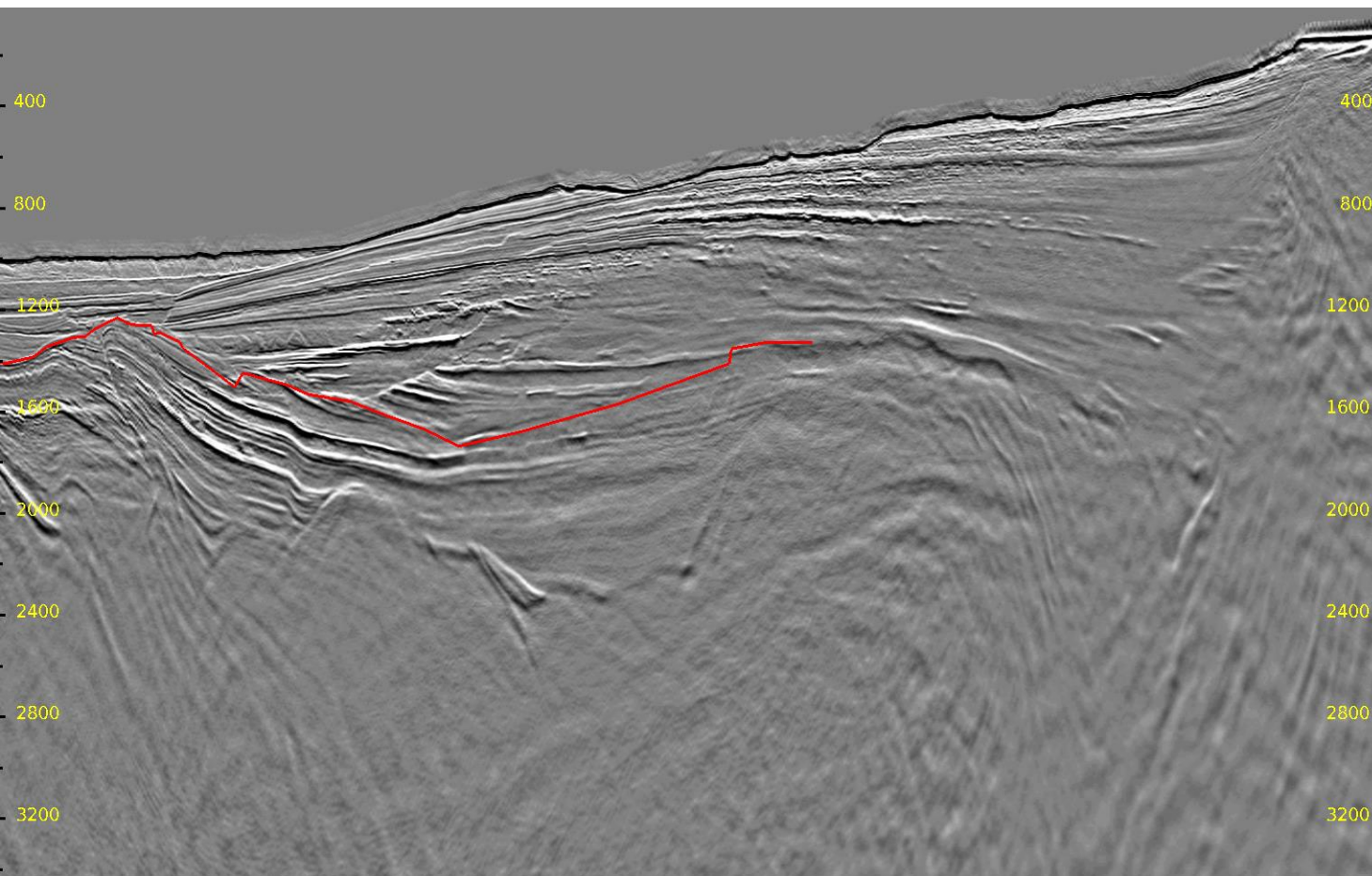


Passion for Geoscience

- The unconformity surfaces were load to the system and overlaid on corresponding stack volume.
- In inline direction, the surface matches the volume well, while edge of the survey is not fully covered.
- In crossline direction, sudden jumps between picked inlines are observed.
- Interpolation of the surface was also tested, which does not resolve the jumps in the crossline direction.

Inline 450: Raw Unconformity Surface

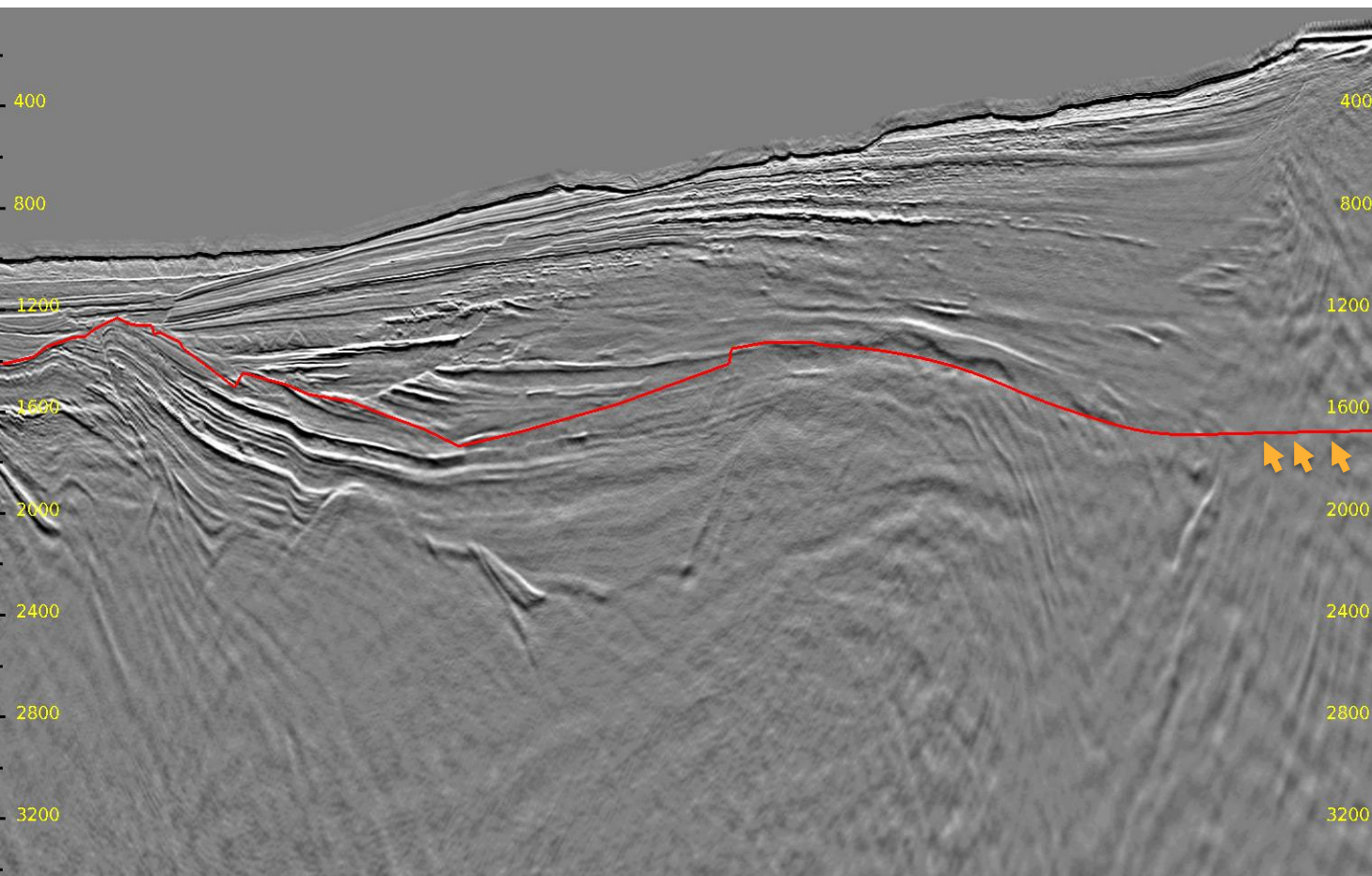
3



- Raw surface without interpolation.

Inline 450: Interpolated Unconformity Surface

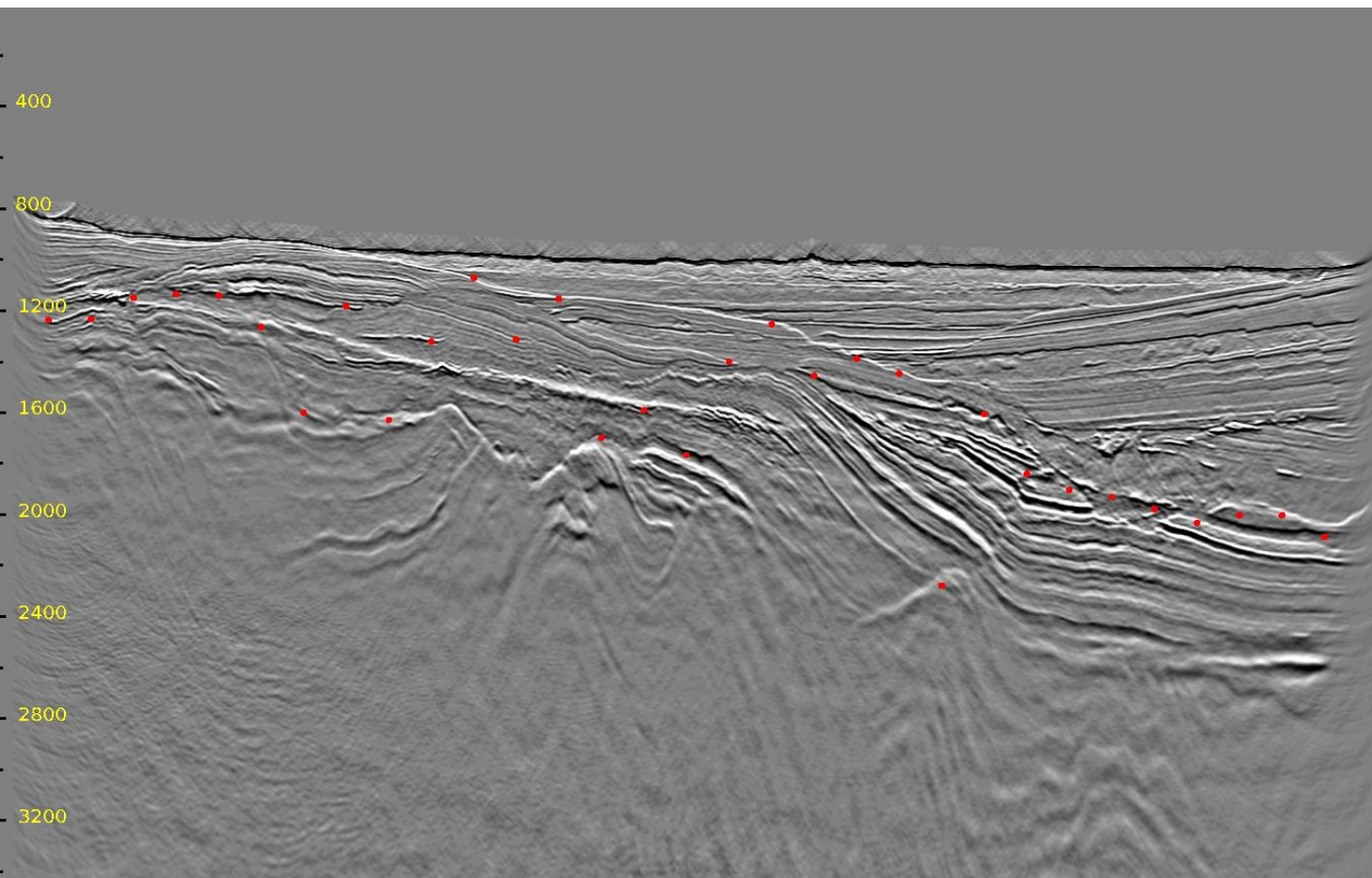
4



- Interpolated surface shows cutting through of events in the shallow water area.

Crossline 4095: Raw Unconformity Surface

5

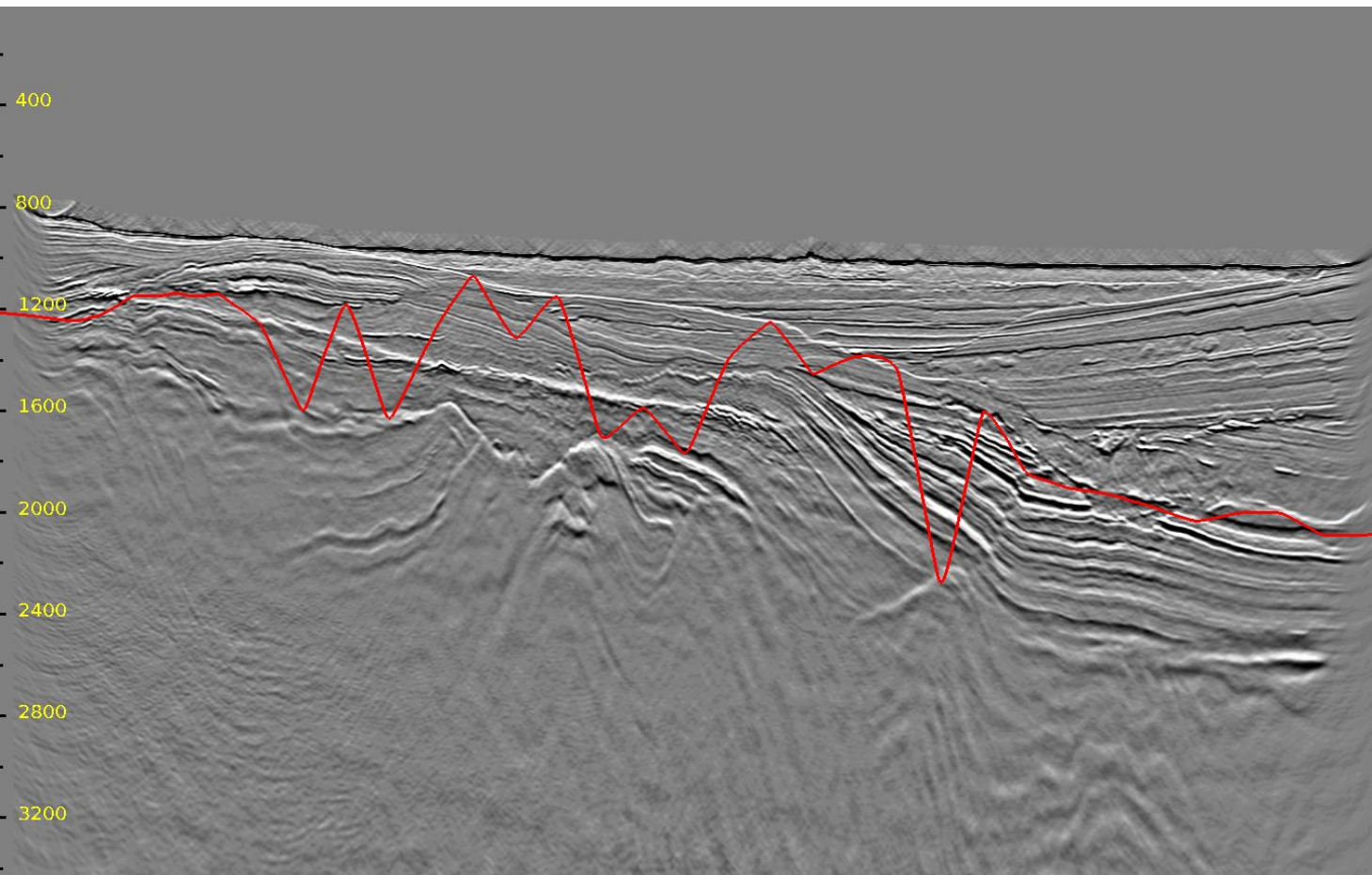


- In the crossline direction, pick inlines seem to jump among different events.



Crossline 4095: Interpolated Unconformity Surface

6



- After interpolation, the surface crosses over multiple events.