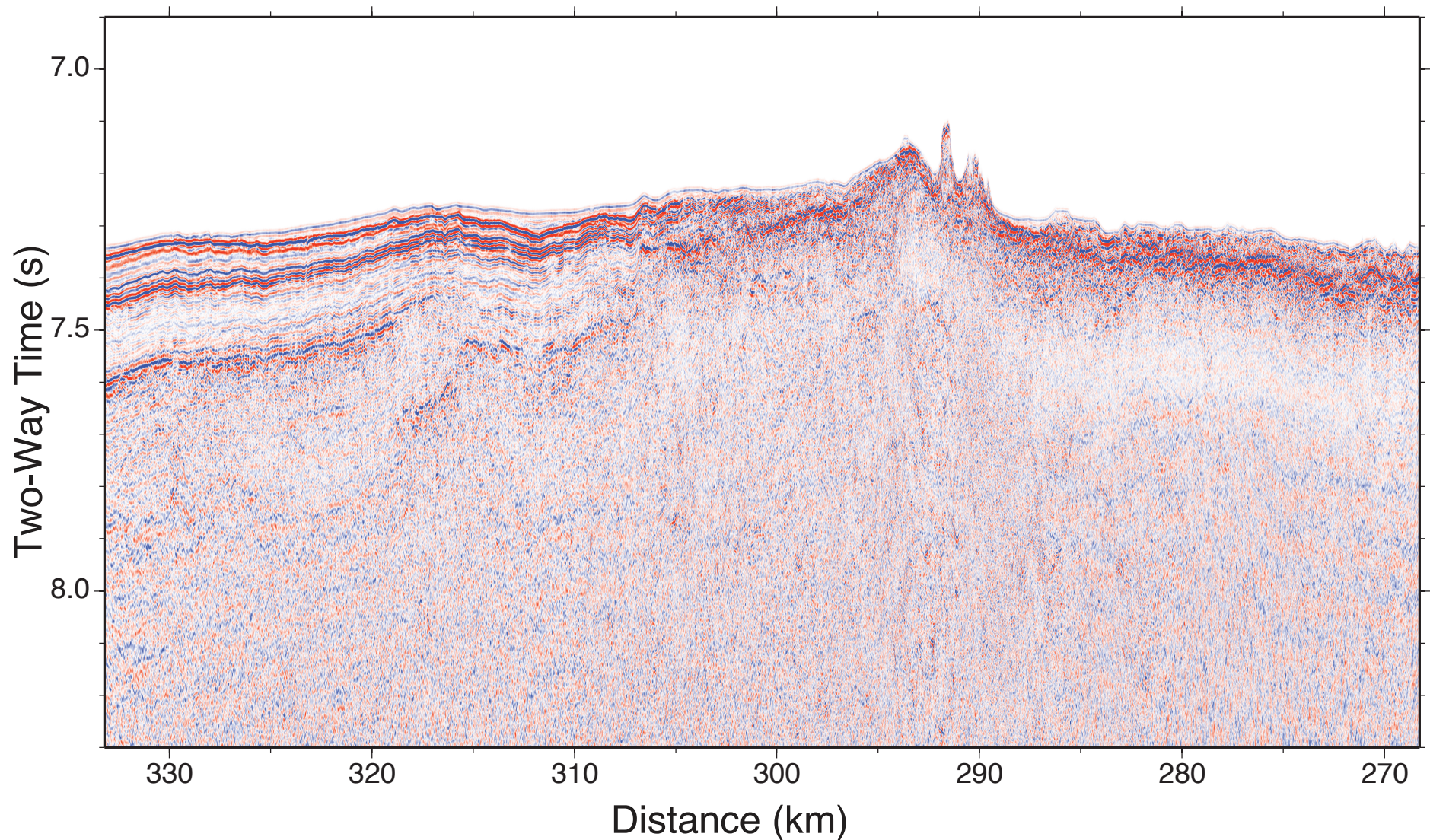


Line 7p1



Tominaga, Masako; Tivey, Maurice; Lizarralde, Daniel; Sager, William; Oakley, Adrienne; Swift, Stephen; Zhang, Jing; Greene, John A. (2018): Processed multi-channel seismic data in the Hawaiian Lineation Jurassic Magnetic Quiet Zone, North Pacific Ocean, acquired by the R/V Thomas G. Thompson in 2011 (TN272). Academic Seismic Portal at UTIG, Marine Geoscience Data System. <http://dx.doi.org/10.1594/IEDA/500210>.

Image provided by John A. Greene.