

RECORDING LOG

PAGE NO. 1 OF 1

R/V CONRADAND R/V'S N/ACRUISE 2510AREA NEW F BASINLINE NO 1VLINE TYPE CDP SOURCE 4x466 IN³ AIR GUNDFS IV 48 CHANNELSFORMAT: SEG BBPI 1600

JULIAN DATE	TIME GMT	TAPE #	FILE COUNT	DEPTH FM	POP RATE SEC	SAMP. RATE MSEC	REC. LEN. SEC	TRIP DEL. SEC	COMMENTS
									NOTE: GUN #1 BAD (RUNNING W/3) NOTE: D.T. #3 SEEMS TO BE READING INCORRECTLY. ANY REPAIR WILL BE NOTED
224	2131	01	01		20	4	12	Ø	FIRST SHOT TAPE - 2 40, 40, 16, 28, 40, 37
224	2204	01	102		20	4	12	Ø	LAST SHOT TPX-2 NO SHOTS LOST 42, 40, 18, 22, 38, 34 - RG
	2204	02	103		20	"	"	"	TPX-1 FIRST SHOT ↓
	2240	02	203		"	"	"	"	
	2240	03	204		"	"	"	"	many parity errors Data No GOOD TBX-2
	2243	03	215		"	"	"	"	
	2243	04	216		"	"	"	"	42, 40, 17, 20, 32, 32 first shot TBX-1
	3226	04	2317		"	"	"	"	last shot
	3227	05	2318		"	"	"	"	Many parity errors - Bad tape 1st shot
		05	326						last shot
	2321	06	327						43, 42, 17, 20, 41, 35 1st shot had on ITB TBX-1
	2350	06	408						Data Logger crashed at 408
	2352	06	409						start again on 30" cycle
	2355	06	414						shot 414 begins 20 sec. cycle
	0000	06	428						END OF TAPE last shot
225	0000	07	429						42, 37, 15, 20, 38, 30 1st shot
	0032	07	528						TBX-2 last shot
	0032	08	529						41, 40, 16, 20, 42, 35 TBX-1
		08			"	"	"	"	GUN #1 auto firing early

PAGE NO...2...

R/V R. Conrad

AND R/V'S N/A

DFS IV 48 CHANNELS

CRUISE 25-10

AREA New Foundland Basin

12 AUGUST 84

FORMAT: SEG B

LINE NO NB-1

LINE TYPE CDD

SOURCE $4 \times 466 \text{ in}^3$

BFI 1600

[illegible]

RECORDING LOG

PAGE NO. 3

R/V CONRAD

AND R/V'S

N/ACRUISE Z5-10AREA Newfoundland Basin

12 AUGUST

DFS IV 48 CHANNELSFORMAT: SEG BLINE NO NB1LINE TYPE CDPSOURCE 4 (466 in³)BPI 1600

JULIAN DATE	TIME GMT	TAPE #	FILE COUNT	DEPTH FM	POP RATE SEC	SAMP. RATE MSEC	REC. LEN. SEC	TRIP DEL. SEC	COMMENTS
225	0539	17	445		20	4	12	0	FIRST SHOT TPX-2 43, 41, 16, 19, 40, 34
	0614	17	547						LAST SHOT
	0614	18	548						FSHOT TPX-1 41, 16, 19, 20, 41, 38
0646	0646	18	646						LSHOT
	0647	19	647						FSHOT TPX-2 43, 43, 18, 18, 43, 38
	0721	19	743						LSHOT
	0724	20	750						FSHOT TPX-1 6 SHOTS MISSED
	0758	20	850						LSHOT
	0759	21	852						FSHOT TPX-2 43, 40, 15, 19, 40, 35 1 SHOT MISSED
	0833	21	954						LSHOT
	0834	22	955						FSHOT TPX-1 41, 41, 17, 19, 40, 33
	0906	22	055						LSHOT (SHOT 999 at 0848) 40, 40, 17, 20, 40, 35
	0908	23	057						FSHOT TPX-2 ~5 shots missed
0930	0942	23	157						LSHOT 40, 40, 17, 20, 40, 35
	0942	24	158						FSHOT TPX-1 (note - # incremented incorrectly - reads 33 but should be 24)
	1015	24	256						LSHOT
	1015	25	257						FSHOT TPX-2 40, 40, 16, 20, 40, 31
	1049	25	363						LSHOT
	1049	26	364						FSHOT TPX-1 40, 40, 17, 20, 39, 32

RECORDING LOG

PAGE NO. 4...R/V CONRADAND R/V'S N/ACRUISE 25-10AREA New Foundland Basin

12 AUG 84

LINE NO. NB-1LINE TYPE CDPSOURCE 4 x 466 in³DFS IV 48 CHANNELSFORMAT: SEG BBPI 1600

JULIAN DATE	TIME GMT	TAPE #	FILE COUNT	DEPTH FM	POP RATE SEC	SAMP. RATE MSEC	REC. LEN. SEC	TRIP DEL. SEC	COMMENTS
225	1123	26	459		20	4	12	Ø	last shot TPX-1
	1123	27	460						first shot 40, 41, 18, 20, 40, 35 TPX-2
		27							
	1150								SB #4 ended shot 541
	1159	27	561						LAST SHOT
	1159	28	563						first shot (3) or 4 shots lost 40, 40, 18, 20, 40, 35
	1230								SB #5 starts up TPX-2
	1232	28	662		20	4	12	✓	last shot
	1232	29	663						first shot TPX-2 40, 40, 17, 21, 38, 33
	1306	29	763(?)						LAST SHOT TPX-2
	1310	30	765						FIRST SHOT TPX-2 13 SHOTS MISSED
	1345	30	866						LAST SHOT
	1345	31	867						first shot TPX-1 40, 41, 17, 20, 40, 32
	1418	31	967						LSHOT
	1418	32	968	999-1-67					FSHOT TPX-2 41, 41, 15, 20, 40, 32
	1454	32	67	29	4	12	Ø		2SHOT 3 MISSED SHOTS
	1455	33	70						FSHOT TPX-1
	1526	33	169						LSHOT

RECORDING LOG

PAGE NO. 5

* SONOBUOY #6 START @ 1546 Z
 ** BEYOND ABOUT 1830 HRS THE FASTEST REFRACTOR IS >12 SEC.

R/V CONRAD

AND R/V'S

CRUISE 25-10

AREA

Newfoundland BasinLINE NO NB-1LINE TYPE CMPSOURCE 4x 466 m³

12 Aug 84

DFS IV 48 CHANNELSFORMAT: SEAB maxBPI 1600

JULIAN DATE	TIME GMT	TAPE #	FILE COUNT	DEPTH FM	POP RATE SEC	SAMP. RATE MSEC	REC. LEN. SEC	TRIP DEL. SEC	COMMENTS
225	1526	34	170		20	4	12	0	FSHOT TPX-2 43, 43, 15, 18, 41, 39
	1600	34	269						LSHOT
	1600	35	270						FSHOT TPX-1 42, 42, 16, 19, 42, 39
	1634	35	369						LSHOT TPX-1
	1634	36	370	3522					FSHOT TPX-2 TAPE ID SAYS 35 first 11 shots
	1708	36	470						LSHOT TPX-2 43, 43, 16, 20, 41, 40
	1708	37	471	3474	20	4	12	0	FSHOT TPX-1 lost one shot 42, 44, 29, 29, 42, 48
	1742	37	572						LSHOT TPX-1 lost one shot 43, 43, 17, 20, 41, 38
	1742	38	573						FSHOT TPX-2
	1816	38	673	3373					LSHOT TPX-2
	1816	39	674						FSHOT TPX-1 44, 43, 17, 20, 42, 40
	1849	39	774	3334					LSHOT TPX-1
	1849	40	775						FSHOT TPX-2 43, 43, 12, 20, 43, 41
	1923	40	875						LSHOT TPX-2
	1923	41	876	3305					FSHOT TPX-1 42, 42, 17, 20, 42, 37
	1956	41	976						LSHOT TPX-1
	1956	42	977	3278					FSHOT TPX-2 40, 41, 17, 21, 40, 36,
	2030	42	77						LSHOT TPX-2
	2030	43	78	3223					FSHOT TPX-1 40, 41, 18, 21, 40, 34

*

**

RECORDING LOG

PAGE NO. 6....R/V CONRADAND R/V'S DFS IV 48 CHANNELSCRUISE 25-10AREA Newfoundland BasinFORMAT: SEGB muxLINE NO. NB-1LINE TYPE CMPSOURCE 4 x 466 in³BPI 1600

JULIAN DATE	TIME GMT	TAPE #	FILE COUNT	DEPTH FM	POP RATE SEC	SAMP. RATE MSEC	REC. LEN. SEC	TRIP DEL. SEC	COMMENTS
225	2103	43	178		20	4	12	0	LSHOT TPX-1 42
	2103	44	179	3058					FSHOT TPX-2 42, 42, 18, 23, 40, 33
	2137	44	281						LSHOT TPX-2
	2137	45	282	2952					FSHOT TPX-1 42, 42, 18, 22, 42, 36
	2211	45	381						LSHOT TPX-1
	2211	46	382	2903					FSHOT TPX-2 41, 42, 18, 22, 41, 36
	2245	46	482						LSHOT TPX-2
	2245	47	484	2742					FSHOT TPX-1 42, 42, 18, 21, 41, 36
	2319	47	584						LSHOT TPX-1
	2319	48	585	2565					FSHOT TPX-2 42, 41, 18, 22, 39, 35
	2353	48	687						LSHOT TPX-2
	2353	49	688						688 has parity errors FSHOT TPX-1
226	0027	49	789						LSHOT TPX-1
	0027	50	790						FSHOT TPX-2 41, 41, 18, 21, 40, 33
	0102	50	892						LSHOT TPX-2 Recorded internally as 40
	0102	51	893						FSHOT TPX-1 43, 43, 18, 20, 41, 37
	0135	51	992						LSHOT TPX-1 First 1/2 recorded as 41
	0135	52	993						FSHOT TPX-2 - 1 shot lost
	0210	52	993-999 0-95						LSHOT TPX-2

RECORDING LOG

PAGE NO. 7...

R/V CONRAD~~AMB R/V'S~~CRUISE 25-10AREA NEW FOUNDLAND BASIN

Aug 13

LINE NO. NB-1LINE TYPE COPSOURCE 4 x 466 in³DFS IV 48 CHANNELSFORMAT: SEG BBPT 1600

JULIAN DATE	TIME GMT	TAPE #	FILE COUNT	DEPTH FM	POP RATE SEC	SAMP. RATE MSEC	REC. LEN. SEC	TRIP DEL. SEC	COMMENTS
226	0210	53	095		20	4	12	Ø	FSHOT TPX-1 lost 1 shot 42-42-17-22-40-37
	0244	53	196						LSHOT TPX-1
	0244	54	197						FSHOT TPX-2 [time loss - tape drive problem lost 3rd or 4th shot lost ~ 10 shots]
	0250	54	201						FSHOT TPX-1
	0324	54	300						LSHOT TPX-1 43-43-20-21-41-36
	0324	55	301						FSHOT TPX-2 lost 1 shot
	0359	55	402						FSHOT TPX-2
	0359	56	403						FSHOT TPX-1 43-42-18-24-42-39
	0432	56	504						LSHOT
	0433	57	505						FSHOT TPX-2 44, 44, 16, 20, 41, 35
	0506	57	604						LSHOT
	0506	58	605						FSHOT TPX-1
	0540	58	705						LSHOT
	0540	59	706						FSHOT TPX-2 44, 42, 21, 20, 41, 38
	0614	59	808						LSHOT TPX-2
	0614 ¹⁴	60	809						FSHOT TPX-1 42, 42, 19, 21, 40, 41
	0647	60	909						LSHOT
	0647	61	910						FSHOT TPX-2 42, 43, 19, 21, 42, 34
	0721	61	11						LSHOT

RECORDING LOG

PAGE NO. 8...

R/V CONRAD

AND R/V'S _____

DFS IV 48 CHANNELSCRUISE 25-10AREA Newfoundland BasinFORMAT: SEGBLINE NO NB-1/2LINE TYPE CDPSOURCE 4 x 466 in³BPI 1600

13 AUG 84

JULIAN DATE	TIME GMT	TAPE #	FILE COUNT	DEPTH FM	POP RATE SEC	SAMP. RATE MSEC	REC. LEN. SEC	TRIP DEL. SEC	COMMENTS
226	0721	62	12	200m	20	4	12	Ø	FSHOT ^{TPX-1} 43, 43, 19, 22, 41, 38,
	0755	62	112						LSHOT
	0755	63	113	175m					FSHOT TPX-2 43, 43, 18, 22, 42, 41 (ONLY 3 GUNS)
	0821	63	188	1					L SHOT End of Line NB#1.
	0821	64	189	126m					FSHOT (TPX-1) NEW LINE = 02 ^{43, 44, 24} 20, 43, 40
	0854	64	289						L SHOT
	0854	65	299	314m					F SHOT (TPX-2) 43, 43, 33, 19, 42, 38
	0928	65	391						L SHOT
	0928	66	392	160m					F SHOT (TPX-1) 41, 43, 20, 20, 42, 43
	0935	66	412						LAUNCH (SB#7A) SP. 412 at 0935Z NO GOOD
	0950	66	457						LAUNCH (SB#7B) dud
	1001	66	491						L SHOT
	1001	67	492						F SHOT 38, 42, 19, 22, 40, 37
	1006	67	506						SB #7 launched (TPX-2)
	1035	67	592						
	1035	68	593						F shot (TPX-1) 40, 43, 18, 21, 42, 31
	1108	68	692						L shot
	1108	69	693						F shot (TPX-2) 40, 43, 18, 20, 41 + 40
	1131								SB #7 ended

line 2

RECORDING LOG

PAGE NO. 9109R/V ConradAND R/V'S N/A

LAST SHOT NB-2

DFS IV 48 CHANNELSCRUISE 25-10AREA New Foundland Basin

FIRST SHOT NB-3

FORMAT: SEG BLINE NO NB-2LINE TYPE CDP SOURCE 4 x 466 in³BPI 1600

JULIAN DATE	TIME GMT	TAPE #	FILE COUNT	DEPTH FM	POP RATE SEC	SAMP. RATE MSEC	REC. LEN. SEC	TRIP DEL. SEC	COMMENTS DFS TRIGGER DELAYS 12, 14, 14, 15 msec
226	1143	69	794		20	4	12	Ø	Last shot
	1143	70	795						F shot (TPX-1)
	1200		846						SB # 8 deployed
	1216	70	895						L shot
	1216	71	896						F shot (TPX-2) 40, 42, 18, 22, 42, 39
	1250	71	995						last shot
	1250	72	996						F shot (TPX-1) 40, 43, 20, 21, 45, 41
	1324	72	098						L shot
	1324	73	099						F shot (TPX-2) 38, 43, 18, 21, 41, 40
	1358	73	202						L shot
	1358	74	203						F shot (TPX-1) 38, 41, 17, 20, 40, 41
	1433	74	303						LSHOT
	1433	75	304						FSHOT (TPX-2) 39, 40, 18, 21, 40, 40
	1450	75	357						LSHOT LINE NB-2
	1450	76	358	end 2					FSHOT LINE NB-3 TPX-1
	1524	76	458						LSHOT
	1524	77	459						FSHOT TPX-2 40, 41, 21, 21, 39, 41
	1558	77	560						LSHOT

13 AUG 67

RECORDING LOG

FILE NO. H 10R/V CONRAD~~AND R/V'S~~DFS IV 48 CHANNELSCRUISE 25-10AREA Newfoundland BasinFORMAT: SEG B muxLINE NO. NB-3LINE TYPE CMPSOURCE 4 466 m³ bubblesBPI 1600

JULIAN DATE	TIME GMT	TAPE #	FILE COUNT	DEPTH FM	POP RATE SEC	SAMP. RATE MSEC	REC. LEN. SEC	TRIP DEL. SEC	COMMENTS
									TRIGGER 12.14.14.15 msec
13 AUG 226	1558	78	561	67	20	4	12	0	FSHOT TPX-1 41, 44, 74, 20, 44, 45
	1632	78	664						LSHOT TPX-1
	1632	79	665	67					FSHOT TPX-2 41, 44, 18, 21, 40, 42
	1707	79	767						LSHOT TPX-2
	1709	80	768	79					FSHOT TPX-1 lost 4 shots
	1743	80	868						LSHOT TPX-1
	1743	81	869	435					FSHOT TPX-2 43-44-20-20-45-49
	1817	81	920						LSHOT
	1817	82	971	861					FSHOT TPX-1 40, 43, 18, 21, 38, 36
	1851	82	73						LSHOT
	1851	83	74	1183					FSHOT TPX-2 40, 41, 18, 21, 42, 43
	1925	83	175						LSHOT
	1925	84	176	1300					FSHOT TPX-1 38, 42, 18, 22, 43, 36
	1954	84	262						FSHOT FSHOT SB #9A (DUD) - ABORTED
	1959	84	278						FSHOT TPX-2 LSHOT
	1959	85	279						FSHOT TPX-2 40, 42, 18, 22, 41, 38
	2003		290						FSHOT SB #9B (DUD) DEAD @ 2011 Z
	2033	85	380						LSHOT TPX-2
	2033	86	381						FSHOT TPX-1 41, 44, 19, 21, 41, 36

RECORDING LOG

PAGE NO. 12 11R/V RC

AND R/V'S

DFS IV 48 CHANNELSCRUISE 25-10AREA Newfoundland BasinFORMAT: SEGB muxLINE NO NA-3LINE TYPE CDPSOURCE 4x466 in³BPI 1600

JULIAN DATE	TIME GMT	TAPE #	FILE COUNT	DEPTH #M	POP RATE SEC	SAMP. RATE MSEC	REC. LEN. SEC	TRIP DEL. SEC	COMMENTS
13 AUG 226	2107	86	482		20	4	12	Ø	LSHOT delays on guns: 12, 14, 14, 15
	2107	87	483						FSHOT TPX-2 42, 42, 18, 21, 41, 38
	2142	87	585						LSHOT
	2142	88	586						FSHOT TPX-1 41, 42, 18, 22, 40, 35
	2148	88	604						SB#9 FSHOT
	2216	88	687						Last shot
	2216	89	688						First shot (TPX-2) 39, 41, 16, 20, 41, 30
	2250	89	790						Lshot
	2250	90	791						F shot (TPX-1) 38, 40, 16, 20, 41, 34
	2324	90	892						L shot
	2324	91	893						Fshot (TPX-2) 40, 44, 20, 21, 41, 31
	2358	91	994						L shot
	2358	92	995						Fshot (TPX-1)
		92							LSHOT TPX-1
14 AUG 227	0017	92							SNOBLOOY 9 53 last shot
	0032	92	96						LSHOT TPX-1
	0032	93	97						FSHOT 38, (TPX-2) 38, 42, 17, 19, 39, 36
	0058	93	175						1st shot on SNOBLOOY #10A
	0105	93	198						LSHOT TPX-2

RECORDING LOG

12
PAGE 13R/V COMRAD 25-10

AND R/V'S _____

DFS IV 48 CHANNELSCRUISE 25-10AREA NEWFOUNDLAND BASINFORMAT: SEGBHUKLINE NO. NB-3LINE TYPE CDPSOURCE 4 X 466 in³BPI 1600

JULIAN DATE	TIME GMT	TAPE #	FILE COUNT	DEPTH FM M	POP RATE SEC	SAMP. RATE MSEC	REC. LEN. SEC	TRIP DEL. SEC	TRIGGER Δ DELAY @ 235 COMMENTS
¹⁴ AUG 227	0108 94				20	4	12	0	TAPE NO GOOD
	0108	94	200						FSHOT (TPX-2) 7 shots lost (3 minutes lost)
	0110	94	205						LAST SHOT SONOBUOY 10A (Aborted).
	0120	94	235						First shot Sonobuoy 10 [ch delay gun 4 053014]
	0142	94	302						LSHOT TPX-2
	0142	95	303		11	11	11	11	FSHOT TPX-1 38, 43, 18, 19, 38, 34
	0216	95	404	3342					LSHOT TPX-1
	0216	96	405						FSHOT TPX-2 37-42-19-20-41-34
	0250	96	507						LSHOT TPX-2
	0250	97	508						FSHOT TPX-1 40-42-20-20-40-38
	0324	97	609						LSHOT TPX-1
	0324	98	610						FSHOT TPX-2 42-43-18-19-40-42
	0359	98	712						LSHOT TPX-2
	0359	99	713		11	11	11	4	FSHOT TPX-1 39-42-17-21-40-34
	0434	99	815						end Sonobuoy #10 SB record beyond 12s delay LSHOT
	0434	100	816						END SONOBUDY 10 @ 0430Z FSHOT TPX2
	0510	100	916						LSHOT
	0511	101	917						FSHOT TPX-1 40, 40, 18, 18, 40, 36
¹⁴ AUG 227	0542	101	22		20	4	12	0	LSHOT 22 was ITB

RECORDING LOG

PAGE NO.

R/V CONRAD~~AND R/V~~DFS IV 48 CHANNELSCRUISE 2510AREA Newfoundland BasinFORMAT: SEG 5 MUXLINE NO NB-3, -4LINE TYPE CMPSOURCE 4/466 m³ bubblesBPI 1600

JULIAN DATE	TIME GMT	TAPE #	FILE COUNT	DEPTH FM	POP RATE SEC	SAMP. RATE MSEC	REC. LEN. SEC	TRIP DEL. SEC	COMMENTS
									TRIGGER DELAY GUNS 1-4: 12, 14, 14, 14
14 AUG 227	0542	102	23	3658	20	4	12	Ø	FSHOT TPX-2
	0616	102	124						LSHOT
	0616	103	125	3697					FSHOT TPX-1 39, 42, 19, 21, 42, 30 (2 ITB'S: 0558 DTRIGGER 12, 14, 14, 14 SP# 125, 126)
	0650	103	226						LSHOT
	0650	104	227	3749					FSHOT TPX-2 40, 43, 18, 20, 41, 38
	0725	104	330						LSHOT
	0725	105	331	3785					FSHOT TPX-1 39, 42, 18, 18, 41, 37
	0759	105	433						LSHOT
	0759	106	434	3835					FSHOT TPX-2 37, 40, 19, 19, 40, 37
	0833	106	536						LSHOT
	0833	107	537	3886					FSHOT TPX-1 38, 41, 18, 18, 38, 34
	0908	107	639						LSHOT
	0908	108	640	3944					FSHOT TPX-2 at shot 647 shot 1 TAPE INCORRECTLY incremented to 117, corrected to 108
	0915	108	660						LSHOT
	0915	109	661	3942					FSHOT TPX-1 NEW LINE NB-4
		109		3942					LSHOT 40, 43, 17, 15, 38, 33
	0935	109	721						FSHOT TPX-2 SONOBOUY # 41
	0949	109	763	3949					LSHOT
	0949	110	764						FSHOT - TPX-2 41, 43, 16, 15, 42, 40

RECORDING LOG

PAGE NO. 15 14R/V ConradAND R/V'S N/ACRUISE 25-10AREA New Foundland BasinLINE NO. 4LINE TYPE CDPSOURCE 4 x 466 in³DFS IV 48 CHANNELSFORMAT: SEGB ^{MAX}BPI 1600

14 Aug 1984

JULIAN DATE	TIME GMT	TAPE #	FILE COUNT	DEPTH FM	POP RATE SEC	SAMP. RATE MSEC	REC. LEN. SEC	TRIP DEL. SEC	COMMENTS
227	1023	110	866		20	4	12	Ø	L shot
	1023	111	867						F shot (TPX-1)
	1057	111	968						L shot
	1057	112	969						F shot (TPX-2) 37,40,15,20,39,31
	1132	112	072						
	1132	113	073						F shot (TPX-1) 38,40,15,18,31,30
	1205	113	171						discontinue SB # 11 shot 171 reel 113
	1206	113	175						L shot
	1206	114	176						F shot (TPX-2) 39,39,15,16,37,30
	1240	114	277						L SHOT (TPX-2)
	1240	115	278						F shot (TPX-1) 36,39,15,18,37,28
	1314	115	379						L SHOT (TPX-1)
	1314	116	380						F SHOT (TPX-2)
	1333	116	437						camera record - all traces quiet
	1348	116	481						L SHOT (TPX-2)
	1348	117	482						F SHOT (TPX-1) 36,40,15,17,36,27
	1422	117	583						L SHOT (TPX-1)
	1422	118	584						F SHOT TPX-2 38-40-15-17-35-28
	1443	118	646						L SHOT TPX-2 changed airgun delay 13,14,14,14

RECORDING LOG

PAGE NO. 15R/V CONRAD

AND R/V'S _____

DFS IV 48 CHANNELSCRUISE 25-10AREA NEWFOUNDLAND BASINFORMAT: SEGBLINE NO. 4LINE TYPE MCS-CDP SOURCE 4 466 in³ airgunsBPI 1600

JULIAN DATE	TIME GMT	TAPE #	FILE COUNT	DEPTH FM	POP RATE SEC	SAMP. RATE MSEC	REC. LEN. SEC	TRIP DEL. SEC	COMMENTS
227	1456	118	687		20	4	12	0	LSHOT TPX-2 AG Delays 13, 14, 14, 14
Aug 14	1456	119	688	3887					FSHOT TPX-1 36-39-15-19-37-28
	1530	119	788						LSHOT TPX-1
	1530	120	789	3878					FSHOT TPX-2 36-39-15-16-37-28
	1604	120	891						LSHOT TPX-2
	1605	121	892	3892					FSHOT TPX-1 37-39-15-18-36-29
	1639	121	993						LSHOT SONOBUOY #12 in @ 1635Z, SHOT 975
	1648	122	994	3934	"	"	"	"	FSHOT TPX-2 39, 39, 15, 20, 36, 27
	1714	122	98						LSHOT
	1714	123	99	3988					FSHOT TPX-1 37, 39, 15, 18, 37, 27
	1748	123	200						LSHOT (missed 200)
	1748	124	201	4024					FSHOT TPX-2 38, 39, 15, 18, 36, 29
	1822	124	303						LSHOT
	1822	125	304	4019					FSHOT TPX-1 37, 39, 15, 20, 35, 30
	1856	125	4069						LSHOT
	1856	126	407	3952					FSHOT TPX-2 37, 39, 15, 20, 37, 30
	1917	126	466						LSHOT FOR SONOBOUT 12
	1930	126	509						LSHOT
	1930	127	510						FSHOT

RECORDING LOG

PAGE NO. 16R/V CONRADAND R/V'S N/ACRUISE 25-10AREA NEWFOUNDLAND BASINLINE NO. 4LINE TYPE MCS-CDP SOURCE 4x4600 cu. in. airgunsDFS IV 48 CHANNELSFORMAT: SEQ BBPI 1600

JULIAN DATE	TIME GMT	TAPE #	FILE COLINT	DEPTH FM	POP RATE SEC	SAMP. RATE MSEC	REC. LEN. SEC	TRIP DEL. SEC	COMMENTS
227	2005	127	611		20	4	12	4	LSHOT TPX-1
<u>Aug 14</u> <u>1981</u>	2005	128	612						FSHOT TPX-2 37,39,15,17,36,32
	2039	128	715						LSHOT
	2039	129	716						FSHOT TPX-1 37,39,15,19,37,30
	2114	129	818						LSHOT
	2114	130	819						FSHOT TPX-2 38,42,16,19,39,32
	2148	130	921						LSHOT
	2148	131	922						F shot (TPX-1) ^{sync error} 962 40,42,16,21,41,35
	2222	131	024		11	11	11	11	
	2222	132	025						F shot (TPX-2) 40,41,15,20,42,40
	2256	132	126						
	2256	133	127						F shot (TPX-1) 38,40,15,20,40,32
	2314	133	180						SB #13 deployed shot 180 reel 133
	2330	133	228						L shot
	2330	134	229						F shot (TPX-2)
228	0004	134	329						L shot
	0004	135	330						F shot (TPX-1) 37,40,16,22,38,35
	0038	135	430						LSHOT (TPX-1)
	0038	136	431						FSHOT (TPX-2)

R/V Conrad

AND R/V'S _____

CRUISE 25-10AREA Newfoundland BasinLINE NO. NB-4MCS/
LINE TYPE CDPSOURCE 4 x 466 in³ airgunsDFS IV 48 CHANNELSFORMAT: SEG BBPT 1600

JULIAN DATE	TIME GMT	TAPE #	FILE COUNT	DEPTH FM	POP RATE SEC	SAMP. RATE MSEC	REC. LEN. SEC	TRIP DEL. SEC	COMMENTS
228	0111	136	530		20	4	12	Ø	LSHOT (TPX-2) 36,
	0111	137	531						FSHOT (TPX-1) 36, 37, 15, 20, 40, 34
		138	643	←					last shot on Smbuoy #14 (0149Z)
	0144	137	629						LSHOT (TPX-1)
	0144	138	630						FSHOT (TPX-2) 39, 41, 15, 19, 37, 38
		FS8							
	0219	138	733						LSHOT TAPE 138
	0219	139	734						FSHOT (ITB SHOT 139) TPX-1
	0254	139	833						LSHOT
	0255	140	834						FSHOT TPX-2 (shots 833-843 recorded on reel 130)
	0326	140	936						LSHOT (ITB SHOT 834) FIRST SHOT SB #14 @ 0300 / SHOT 258
	0326	141	937						FSHOT TPX-1
	0358	141	31						End SB #14 - bad transmitter
	0400	141	39						LSHOT
	0400	142	40						FSHOT TPX-2 46, 40, 15, 20, 37, 38
	0434	142	142						LSHOT TPX-2
	0434	143	143						FSHOT TPX-1 44-40-14-19-42-33
	6508	143	243						LSHOT TPX-1

Tape
138

RECORDING LOG

PAGE NO. 17.18R/V CONRAD

AND R/V'S _____

DFS IV 48 CHANNELSCRUISE 25-10AREA NEWFOUNDLAND BASINFORMAT: SEG BLINE NO. NB-4/5/6 LINE TYPE CMP SOURCE 4 x 466in³ airgunsBPI 1600

	JULIAN DATE	TIME GMT	TAPE #	FILE COUNT	DEPTH FM	POP RATE SEC	SAMP. RATE MSEC	REC. LEN. SEC	TRIP DEL. SEC	COMMENTS
Aug 15	228	0508	144	244	4614	20	4	12	4	FSHOT TPX-2 44-40-14-18-34-30
		0542	144	347						LSHOT TPX-2
		0542	145	348	4667					FSHOT TPX-1
		0610	145	427						LSHOT END LINE 4
NB-5		0610	146	428	4699					FSHOT TPX-2 39,38,14,17,35,30 BEGIN LINE 5
		0644	146	530						LSHOT
		0644	147	531	4713					FSHOT TPX-1 42,38,15,18,36,32
		0718	147	633						LSHOT
		0718	148	634	4715					FSHOT TPX-2 43,37,13,16,37,29
		0729	148	666						LSHOT END LINE 5 (missed by 4 mins the end/start of line 5/6)
NB-6		0729	149	667	4715					FSHOT TPX-1 42,40,15,19,38,31, BEGIN LINE 6
		0803	149	768						LSHOT FSHOT
		0803	150	769	4693					FSHOT TPX-2 35,38,14,20,38,30
		0805	150	773	#					SONOBUOY #15
		0837	150	871	4656					LSHOT
		0837	151	872	4656					FSHOT TPX-1 35,38,14,20,38,30
		0911	151	973						LSHOT

RECORDING LOG

PAGE NO. 20 19R/V CONRAD

AND R/V'S _____

CRUISE 25-10AREA NEWFOUNDLAND BASINLINE NO. NB-46LINE TYPE CMPSOURCE 4 x 466 cu. in. airguns.DFS IV 48 CHANNELSFORMAT: SEBBPI 1600

JULIAN DATE	TIME GMT	TAPE #	FILE COUNT	DEPTH FM	POP RATE SEC	SAMP. RATE MSEC	REC. LEN. SEC	TRIP DEL. SEC	COMMENTS
<u>228</u> <u>15/AUG</u> <u>1984</u>	<u>0911</u>	<u>152</u>	<u>974</u>		<u>20</u>	<u>4</u>	<u>12</u>	<u>0</u>	F-SHOT 35, 40, 15, 23, 42, 35 (TPX-2)
	<u>0945</u>	<u>152</u>	<u>77</u>						L-SHOT
	<u>0945</u>	<u>153</u>	<u>78</u>						F-SHOT 34, 40, 16, 25, 42, 36 (TPX-1)
	<u>1000</u>		<u>119</u>						SB# 15 ended; shot 119 reel 153
	<u>1020</u>	<u>153</u>	<u>180</u>						L-shot
	<u>1020</u>	<u>154</u>	<u>181</u>						F-shot (TPX-2)
	<u>1020</u>	<u>154</u>	<u>283</u>						L-shot
	<u>1054</u>	<u>155</u>	<u>284</u>						F-shot (TPX-1) 37, 41, 15, 20, 40, 32
	<u>1115</u>	<u>155</u>	<u>346</u>						sb# 16 deployed; shot 346 reel 155
	1116	156	3						
	<u>1128</u>	<u>155</u>	<u>385</u>						Last shot
	<u>1128</u>	<u>156</u>	<u>386</u>						F-shot (TPX-2) 37, 40, 15, 20, 40, 30
	<u>1203</u>	<u>156</u>	<u>488</u>						
	<u>1203</u>	<u>157</u>	<u>489</u>						F-shot (TPX-1) 35, 40, 15, 20, 37, 34
	<u>1237</u>	<u>157</u>	<u>590</u>						
	<u>1237</u>	<u>158</u>	<u>591</u>						F-shot (TPX-2) 35, 40, 15, 20, 40, 33
	<u>1310</u>	<u>158</u>	<u>690</u>						L-SHOT (TPX-2)
	<u>1310</u>	<u>159</u>	<u>691</u>						F-SHOT (TPX-1) 34, 40, 15, 20, 38, 33
	<u>1329</u>	<u>159</u>	<u>748</u>						end of SB# 16

RECORDING LOG

PAGE NO. 20R/V COMRAD

AND R/V'S _____

DFS IV 48 CHANNELSCRUISE 25-10AREA NEWFOUNDLAND BASINFORMAT: SEGBLINE NO. NB-6LINE TYPE CMPSOURCE 4x466 in³ HargensBPI 1600

JULIAN DATE	TIME GMT	TAPE #	FILE COUNT	DEPTH FM	POP RATE SEC	SAMP. RATE MSEC	REC. LEN. SEC	TRIP DEL. SEC	COMMENTS
228	1344	159	790		20	4	12	0	LSHOT (TPX-1)
	1344	160	791	4342					FSHOT (TPX-2) 35, 40, 16, 20, 40, 34
	1418	160	893						LSHOT TPX-2
1418	1418	161	894	4451					FSHOT TPX-1 37, 40, 14-20-40-34
	145	161	932						changed delay AG #1 13-14-14-14
	1452	161	996						LSHOT TPX-1
	1452	162	997	4461					FSHOT TPX-2 LOST TWO SHOTS 36-40-14-19-40-34
	1527	162	99						LSHOT TPX-2
	1527	163	100	4417					FSHOT TPX-1 36-42-15-20-40-32
	1601	163	201						LSHOT TPX-1
	1601	164	202	4345					FSHOT TPX-2 37-40-15-20-41-35
	1635	164	304						LSHOT
	1635	165	305	4277					FSHOT TPX-1 36, 40, 15, 15, 40, 32
	1710	165	406						LSHOT
	1710	166	407	4208					FSHOT TPX-2 ΔTRIGGER DELAY 13, 14, 14, 15 (1640Z)
	1744	166	510						BAD SHOTS FROM 1730Z TO LSHOT TPX-2
	1744	167	511	4153					FSHOT TPX-1 36, 40, 15, 16, 40, 35
	1819	167	612						LSHOT
	1819	168	613						FSHOT TPX-2

15
AUG
84

RECORDING LOG

PAGE NO. 2221RAV CONRADAND RAVS 15 AUG 84DFS IV 48 CHANNELSCRUISE 2510AREA Newfoundland BasinFORMAT: IEGBLINE NO. M-6LINE TYPE CMPSOURCE 4 466 in³ GUN DELAYS
TRIGGER 13-14-14-15BPI 1.6x10³

JULIAN DATE	TIME GMT	TAPE #	FILE COUNT	DEPTH FM	POP RATE SEC	SAMP. RATE MSEC	REC. LEN. SEC	TRIP DEL. SEC	COMMENTS
<u>228</u> <u>15 AUG</u>	<u>1819</u>	<u>168</u>	<u>613</u>	<u>4061</u>	<u>20</u>	<u>4</u>	<u>12</u>	<u>9</u>	FSHOT TPX-2 37, 42, 15, 20, 42, 34,
	<u>1853</u>	<u>168</u>	<u>716</u>						LSHOT
	<u>1853</u>	<u>169</u>	<u>717</u>						FSHOT TPX-1 35, 42, 15, 20, 41, 35
	<u>1927</u>	<u>169</u>	<u>818</u>						LSHOT
	<u>1928</u>	<u>170</u>	<u>819</u>						FSHOT TPX-2 43, 43, 17, 19, 41, 39
	<u>2002</u>	<u>170</u>	<u>921</u>						LSHOT
	<u>2002</u>	<u>171</u>	<u>922</u>						FSHOT TPX-1 42, 45, 18, 24, 43, 35
	<u>2036</u>	<u>171</u>	<u>024</u>						LSHOT
	<u>2036</u>	<u>172</u>	<u>25</u>						FSHOT TPX-2 42, 43, 16, 21, 40, 36
	<u>2111</u>	<u>172</u>	<u>128</u>						LSHOT
	<u>2111</u>	<u>173</u>	<u>129</u>						FSHOT TPX-1 41, 42, 15, 20, 42, 35
	<u>2145</u>	<u>173</u>	<u>230</u>						LSHOT
	<u>2145</u>	<u>174</u>	<u>231</u>						FSHOT TPX-2 41, 42, 15, 19, 38, 32
	<u>2210</u>	<u>174</u>	<u>307</u>						SHOT SB# 17 deployed; shot 307 reel 174
	<u>2219</u>	<u>174</u>	<u>333</u>						LSHOT
	<u>2219</u>	<u>175</u>	<u>334</u>						Fshot (TPX-1)
	<u>2252</u>	<u>175</u>	<u>434</u>						Gain reduced on Sonobuoy receiver to avoid clipping.
	<u>2253</u>	<u>175</u>	<u>435</u>						LS
	<u>2253</u>	<u>176</u>	<u>436</u>						Fshot (TPX-2) 41, 42, 16, 20, 41, 34

RECORDING LOG

PAGE NO. 23 22RV Conrad~~DATE~~ 15/16 Aug 1984CRUISE 25-10AREA New Foundland BasinLINE NO NB-6/7LINE TYPE CDPSOURCE 4 x 466 in³ (2 Guns only: 0045 to 0100)DFS: IV 48 CHANNELSFORMAT: SEGBBPI 1600

JULIAN DATE	TIME GMT	TAPE #	FILE COUNT	DEPTH FM	POP RATE SEC	SAMP. RATE MSEC	REC. LEN. SEC	TRIP DEL. SEC	COMMENTS
228			472		20	4	12	0	Files 472-476 gain reduced on sonobuoy receiver trying to eliminate clipping; at 477 gain restored ~ to previous value
		176	538						L shot
	2327	177	539						F shot (TPX-1)
	0001	177	640						
229	0001	178	641						F shot (TPX-2) 42, 44, 15, 18, 40, 35
	0030	178	726						end of SB #17
	0035	178	740						LSHOT (TPX-2) END LINE 6 (NOTE: END OF LINE 6 WAS 14 SHOTS IN THE START OF START TURN) LINE 7
	0035	179	741						FSHOT (TPX-1) 38, 43, 17, 21, 43, 35 (COMPRESSOR MAINTENANCE) *
	0045	179	741						GUNS #1 & #4 OFF; USING 2 GUNS
	0101	179	821						ALL GUNS ON
	0108	179	840						LSHOT (TPX-1)
	0108	180	841						FSHOT (TPX-2) 38, 41, 16, 21, 41, 38
	0141	180	940						LSHOT (TPX-2)
	0141	181	941						FSHOT (TPX-1) 36, 41, 16, 21, 40, 38
	0215	181	044						LSHOT TPX-1
	0215	182	045						FSHOT TPX-2 39-42-15-19-40-32
02		182	147		20	4	12	0	LSHOT TPX-2

RECORDING LOG

PAGE NO. 24 23

R/V. CONRADAND R/V'S. Aug 16, 84DFS IV 48 CHANNELSCRUISE RC2510AREA Newfoundland BasinFORMAT: SEGBLINE NO. NB-7/8LINE TYPE CMPSOURCE 4 4661K³BPI 1600

TRIGGER DELAY 12-14-14-14

JULIAN DATE	TIME GMT	TAPE #	FILE COUNT	DEPTH FM	POP RATE SEC	SAMP. RATE MSEC	REC. LEN. SEC	TRIP DEL. SEC	COMMENTS
	0250	183	148	3859	20	4	12	0	FSHOT TPX-1 40 42 15 21 40 33
	0324	183	249						LSHOT
	0324	184	250	3885					FSHOT TPX-2 39 42 14 19 34 40
	0358	184	351						LSHOT
	0358	185	352	3894					FSHOT TPX-1 40 42 15 20 39 33
	0432	185	453						LSHOT
	0432	186	454	3892					FSHOT TPX-2 40 41 15 21 40 35
	0456	186	525						LSHOT * END. NB-7 * * *
	0456	187	526	3916					FSHOT TPX-1 * * START NB-8 * *
	0530	187	627						LSHOT
	0530	188	628	3958					FSHOT TPX-2 40 41 15 20 39 41
	0604	188	730						LSHOT
	0605	189	731	3998					FSHOT TPX-1 42, 43, 17, 20, 40, 36 * TAPE ID * NOT Incremented until SP 761
	0639	189	833						LSHOT
	0639	190	834	4034					FSHOT 41, 43, 15, 20, 40, 34 TPX-2
	0713	190	936						LSHOT
	0713	191	937	4060					FSHOT TPX-1 40, 42, 16, 24, 40, 36
	0747	191	039						LSHOT
	0747	192	040	4097					FSHOT TPX-2 40, 43, 16, 24, 40, 34

RECORDING LOG

PAGE NO. 2524R/V CONRAD AND R/V'S DFS IV 48 CHANNELSCRUISE 25-10 AREA Newfoundland BasinFORMAT: SEG-BLINE NO NB-8 LINE TYPE CDP SOURCE 4x466 in 3BPI 1600TRIGGER DELAY 12-14-14-14

JULIAN DATE	TIME GMT	TAPE #	FILE COUNT	DEPTH FM	POP RATE SEC	SAMP. RATE MSEC	REC. LEN. SEC	TRIP DEL. SEC	COMMENTS
229 16 AUG	0821	192	141		20	4	12	Ø	LSHOT
	0821	193	142						FSHOT 41, 43, 15, 25, 41, 38 TPX-1
	0855	193	243						LSHOT
	0855	194	244						FSHOT TPX-2 42, 43, 16, 25, 40, 35
	0929	194	346						LSHOT
	0915	194	302						Launch SB#18
	0929	195	347						F-SHOT TPX-1 40, 42, 14, 21, 40, ³⁴ 35
	1003	195	448						Lshot
	1003	196	449						Fshot (TPX-2) 40, 40, 15, 21, 37, 32
	1037	196	550						Lshot
	1037	197	551						Fshot (TPX-1)
	1111	197	651						Lshot
	1111	198	652						Fshot (TPX-2) 40, 40, 15, 22, 36, 30
	1145	198	754						
	1145	199	755						Fshot (TPX-1) 40, 42, 15, 22, 37, 32
	1150	199	769						SB#18 ended shot 769 reel 199
	1219	199	856						LSHOT (TPX-1)
	1219	200	854						FSHOT (TPX-2) 42, 43, 15, 22, 37, 33
	1253	200	956						LSHOT (TPX-2)

RECORDING LOG

PAGE NO. 24.25R/V COMRAD

AND R/V'S _____

DFS IV 48 CHANNELSCRUISE 25-10AREA NEWFOUNDLAND BASINFORMAT: SEGBLINE NO NB-8LINE TYPE CDPSOURCE 4x466in³BPI 1600

JULIAN DATE	TIME GMT	TAPE #	FILE COUNT	DEPTH FM	POP RATE SEC	SAMP. RATE MSEC	REC. LEN. SEC	TRIP DEL. SEC	COMMENTS
									TRIGGER 12 13 13 15
229 16 AUG 84	1253	201	957	4130	20	4	12		FSHOT(TPX-1) 40, 41, 15, 23, 38, 33
	1327	201	059						LSHOT(TPX-1)
	1327	202	060	4106					FSHOT(TPX-2) 41, 42, 14, 26, 39, 31
	1401	202	162						LSHOT
	1401	203	163	4098					FSHOT TPX-1 (Galro @ Sht 170... looks real good) 25 → 60 Hz
	1435	203	264						LSHOT
	1435	204	265	4094					FSHOT TPX-2 40 41 15 20 36 30
	1509	204	367						LSHOT ΔTRIGGER @ 0238 → 12 13 13 14
	1509	205	368	4145					FSHOT TPX-1 FSHOT SB # 19 IS 368 @ 0512
	1543	205	468						LSHOT SHOTS 368-380 SB MISSED SHOTS, 381 IS SB 19
	1544	206	469	4031					FSHOT TPX-2 FSHOT.
	1617	206	571						LSHOT TPX-2
	1617	207	572	3960					FSHOT TPX-1 40-40-14-20-37-32
	1651	207	673						LSHOT TPX-1 #1 GRAN TRIGGER GETTING PROGRESSIVELY WORSE
	1651	208	674	3896					WANDERS OVER 5-7 ms. FSHOT TPX-2 40-40-15-20-35-30
	1725	208	775						LSHOT TPX-2
	1725	209	776	3843					FSHOT TPX-1 40-41-14-21-39-33
	1759	209	877						LSHOT TPX-1
	1759	210	878	3785					FSHOT TPX-2 38, 44, 17, 20, 39, 35

RECORDING LOG

PAGE NO. 27.26R/V CONRADAND R/V'S CRUISE 25-10AREA NEWFOUNDLAND BASINLINE NO NB-8LINE TYPE CDPSOURCE 4x466 in³DFS IV 48 CHANNELSFORMAT: SEQ BBPI 1600

JULIAN DATE	TIME GMT	TAPE #	FILE COUNT	DEPTH FM	POP RATE SEC	SAMP. RATE MSEC	REC. LEN. SEC	TRIP DEL. SEC	COMMENTS
229 16 Aug '84		210	923		20	4	12		SONOB 404 #19
	1834	210	980						LSHOT
	1834	211	981						F-SHOT 40, 43, 15, 20, 37, 28 TPX-#1
	1907	212	82						LSHOT
	1907	212	83						FSHOT TPX-2 39, 40, 15, 19, 37, 30
	1942	212	185						LSHOT
	1942	213	186						FSHOT TPX-1
	2016	213	286						LSHOT TPX
	2016	214	287						F-SHOT TPX-2 40, 40, 15, 19, 36, 30
									CHANGE TRIGGER DELAY AIRGUN #1 firing ahead of others Will replace Solenoid
	2050	214	389						LSHOT
	2050	215	390						FSHOT TPX-1 39, 40, 14, 19, 37, 31,
	2124	215	492						LSHOT
	2124	216	493						FSHOT TPX-2 38, 41, 15, 20, 38, 34
									* TRIGGER DELAY CHANGED → 14, 13, 13, 14
	2132								AIRGUN #1 back in service
	2139								AIRGUNS #5 & 4 turned off due to compressor problem
	2151								AIRGUN #1 on line (#4 still off)
	2158	216	594						LSHOT

RECORDING LOG

PAGE NO. 28-27R/ ConradAND R/V'S —CRUISE 25-10AREA New Foundland BasinLINE NO. NB-8LINE TYPE CDPSOURCE 4 x 466 in³
air gunsDFS IV 48 CHANNELSFORMAT: Seg BBPI 1600

JULIAN DATE	TIME GMT	TAPE #	FILE COUNT	DEPTH FM	POP RATE SEC	SAMP. RATE MSEC	REC. LEN. SEC	TRIP DEL. SEC	COMMENTS
8-16-84	2229	217	595 595		20	4	12	0	gun <u>four</u> still off firing delays 14, 13 + 13
			655						→ gun 1 delay increased to 15 ms from 14
	2225		665						gun 4 restored; delayed 14 ms
			670						gun 4 delay changed from 14 → 15 ms
			673						problem noise due to ship nearby
			680						gun 4 delay changed from 15 → 14 ms
	2232	217	698						L shot
	2232	218	697						F shot (TPX-2) 38, 40, 15, 20, 37, 30
		218	799						L shot
	2307	219	800						F shot (TPX-1) 38, 42, 15, 19, 38, 32
	2341	219	901						L shot gun # 1 jumping about between 12-14 ms delay
	2341	220	902						F shot (TPX-2)
8-17-84	2330	220	03						delays - 14, 13, 13, 14
	0014	221	04						F shot (TPX-1) changed delay on gun 4 14 → 12 ms
	0040	221	81						SB #20 start
	0048	221	104						L shot (TPX-1)
	0048	222	105						F shot (TPX-2) 38, 42, 15, 22, 38, 32
	0121	222	205						L shot (TPX-2)
	0121	223	206						F shot (TPX-1) 41, 43, 15, 20, 41, 35

RECORDING LOG

PAGE NO. 29 28R/V CONRADAND R/V'SDFS IV 48 CHANNELSCRUISE 25-10AREA NEWFOUNDLAND BASINFORMAT: SEGBLINE NO NB-8LINE TYPE MCS-CDP SOURCE 4 X 466 in³ airgunsBPI 1600

JULIAN DATE	TIME GMT	TAPE #	FILE COUNT	DEPTH FM	POP RATE SEC	SAMP. RATE MSEC	REC. LEN. SEC	TRIP DEL. SEC	COMMENTS
230	0155	223	307		20	20 4	12		LSHOT TPX-1 SONOBUOY #20 IN WATER
Aug 17	0155	224	308						FSHOT TPX-2 41-45-16-22-41-36
	0230	224	410		20	4	12		LSHOT TPX-2
	0230	225	411						FSHOT TPX-2
	0255	225	490						LSHOT TPX-1
	0257	226	492						FSHOT TPX-2 missing ~ 5 shots - tape drive malfunction
	0300	226	504						end Sonobuoy #20 (you mean operator error)
	0331	226	594						LSHOT TPX-2
	0331	227	595						FSHOT TPX-1 42-45-16-22-42-37-
	0405	227	696						LSHOT TPX-1
	0405	228	697						FSHOT TPX-2 42-45-17-22-44-40
	0430	228	799						LSHOT
	0440	229	800	FSHOT		TPX-1			SB #20 OVER SIDE @ 0430 Z, SHOT 710, DFS TAPE 228, ^{LOGGER} 207 TAPE
	0442	229	}						LSHOT SB #21 @ 0442 ~ 809 (SHOT)
	0449	229	↓						SB 21A OVER SIDE @ 0449 Z, SHOT 829, DFS REEL 229 ^{LOGGER} REEL
	0514	229	901						LSHOT TPX-1
	0514	230	902						FSHOT TPX-2
	0549	230	005						LSHOT

RECORDING LOG

PAGE NO. ... ~~30~~ 29R/V CONRADDATE 17 August 1984CRUISE 2510AREA Newfoundland BasinLINE NO. NB-8/9LINE TYPE CMPSOURCE 4 466 m³ airDFS IV .48x10² CHANNELSFORMAT: SEGBBPI 1.6 x 10³

JULIAN DATE	TIME GMT	TAPE #	FILE COUNT	DEPTH FM	POP RATE SEC	SAMP. RATE MSEC	REC. LEN. SEC	TRIP DEL. SEC	COMMENTS
									Gun trigger 13 13 13 14 SNL SB#22
17 Aug 1230	0548	231	006		20	4	12	0	FSHOT TPX-1 42 42 16 20 42 35
	0622	231	107						LSHOT
	0622	232	108						FSHOT TPX-2 41 42 15 22 42 37
	0622		108						system crashed (logger down) last good shot 107
	0655								0655 - begin slow turn to last shot @ 0620 Z
	0925	232	110						FSHOT after system crash... Start NB-9 12,13,13,14
									We are now firing off an oscillator + using ITB to trigger the data logger. There will be an automatic delay of 1.1 sec. (tape rewind) + 1.1 sec. (tape advance) + ITB duration (ms) before data recording begins // Increment line I.D. to "009"
	0954	232	199						L Shot (TPX-1)
		232	200						Fshot (TPX-2) Missed 2 shots. 40,40,15,24,40,35
	0956	233	202						parity errors + sync error #292
			289						shot " " - changed tape drive early
	1027	233	293						Fshot (TPX-1) 40,42,15,22,38,33
	1027	234	294						drive didn't record, missed gun shot
	1034		312						L Shot
	1059	234	387						

Record length 15 sec.

2

RECORDING LOG

PAGE NO. 31.30R/V Conrad

AND R/V'S _____

CRUISE 25-10AREA New Foundland BasinLINE NO NB-9LINE TYPE CDPSOURCE 4 x 466in³ airgunsDFS IV 48 CHANNELSFORMAT: SEG BBPT 1600

JULIAN DATE	TIME GMT	TAPE #	FILE COUNT	DEPTH FM	POP RATE SEC	SAMP. RATE MSEC	REC. LEN. SEC	TRIP DEL. SEC	COMMENTS
230	1059	235	388		20	4	12	Ø	F shot (TPX-2) 41, 42, 15, 22, 41, 34
	1131	235	483						L shot
	1131	236	484						F shot (TPX-1) 42, 42, 15, 22, 40, 35
	1134		496						# 4 gun leaking - firing on 3 guns
									New gun fire times: 00 sec, 20 sec., 40 sec.
									(three guns → #4 out for repair of air hose)
	1159	236	565						gun #4 misfiring, pulled
	1203	236	573						L shot, system off (~30 shots lost)
	1213	237	574						F shot (TPX-1) TPX-1 42, 42, 15, 22, 42, 39
									We are now back on the data
		237			598				logger ⇒ FTB, beginning shot #574 reel #237
									delay on guns 1, 2 & 3 (12, 13, 13)
	1247	237	674						L shot (TPX-1) TPX-1
	1247	238	675						F shot (TPX-2) TPX-2 42, 42, 14, 25, 40, 32
	1303	238	724						gun #4 in water & firing - delay is 14
	1320	238	745						L shot (TPX-2) TPX-2
	1321	239	776						F shot (TPX-1) 40, 40, 14, 21, 41, 34 TPX-1
	1355	239	877						L shot

17/AUG

10 min post

RECORDING LOG

PAGE NO. 31

RV Conrad~~AND RVS~~

17 August 84 Day = 230

Jonathan 22CRUISE 2510

AREA

Newfoundland BasinDFS IV 48 CHANNELSFORMAT: SEG BLINE NO. 18-9LINE TYPE CMPSOURCE 4 466 m³ airBPI 1600

JULIAN DATE	TIME GMT	TAPE #	FILE COUNT	DEPTH FM	POP RATE SEC	SAMP. RATE MSEC	REC. LEN. SEC	TRIP DEL. SEC	COMMENTS
									GUN TRIGGER: 12 13 13 14 ms.
17 AUG	1355	240	897	3975	20	4	12	0	FSHOT TPX-2 37 38 15 20 39 29
Day=230	1429	240	980						LSHOT
	1429	241	981	3983					FSHOT TPX-1
	1503	241	82						LSHOT
	1503	242	83	3988					FSHOT TPX-2 38 40 14 22 41 32
	1537	242	183						LSHOT FIRST SHOT <u>SB 22</u> @ 1504 SHOT 88
	1538	243	184	3982					FSHOT TPX-1
	1603?	243	288						LSHOT
	1605?	244	289	3970					FSHOT TPX-2 41-41-14-24-39-30
	1645	244	391						LSHOT
	1645	245	392	3963					FSHOT TPX-1 40-40-14-20-38-33
	1719	245	493						LSHOT
	1719	246	494	3953					FSHOT TPX-2
	1731	246	528						LAST FILE SB #22
	1754	246	596						LSHOT TPX-2 40-38-15-20-38-31
	1754	247	597	3942					FSHOT TPX-1
	1828	247	698						LSHOT
	1828	248	699	3951					FSHOT TPX-2 38-38-15-20-40-31
	~1850	248	768						LSHOT CHANGED DELAY 114 → 215 ms

RECORDING LOG

PAGE NO. 32

R/V Conrad

CRUISE 25-10

LINE NO NB-9

AND R/V' S

AREA

LINE TYPE

SOURCE

$4 \times 466 \text{ in}^3 \text{ air}$

DFS IV 48 CHANNELS

FORMAT: SEGB

BPI 1600

JULIAN DATE	TIME GMT	TAPE #	FILE COUNT	DEPTH FM	POP RATE SEC	SAMP. RATE MSEC	REC. LEN. SEC	TRIP DEL. SEC	COMMENTS
17 Aug 84 230	1902	248	801		20	4	12	Ø	LSHOT
	1902	249	802						FSHOT 38-38-15-20-40-29 TPX-1
	1936	249	903						LSHOT
	1936	250	904						FSHOT TPX-2 35-38-15-17-40-30
	2006	250	992						FSHOT SB #23A
	2011	250	007						LSHOT - NO SHOTS LOST.
	2011	251	008						FSHOT TPX-1 36, 39, 15, 20, 38, 28
	2020	"							END SONOBUOY 23A - caught in streamer
	2045	"	99109						SB #23
	2045	251	109						LSHOT
	2045	252	110						FSHOT TPX-2 36, 40, 15, 20, 37, 34,
	2119	252	212						LSHOT
	2119	253	213						FSHOT TPX-1 37, 39, 15, 19, 39, 37 * TAPE ID WAS NOT INCREMENTED IN THE
	2153	253	315						LSHOT TENTHS DIGIT AT #250 & HAS BEEN WRITING 240.44 INSTEAD OF 5
	2153	254	316						FSHOT TPX-2 37 37 15, 21 37 32 SINCE TAPE #250 UNTIL SP# 221
	2227	254	419						LSHOT
	2228	255	420						FSHOT (TPX-1)
	2230		427						gun #4 out of the water 37, 37, 14, 20, 35, 30
	2240	255	455						Last shot on SB # 23

RECORDING LOG

PAGE NO. ~~32~~ 33R/V ConradAND R/V'S —CRUISE 25-10AREA New Foundland BasinLINE NO NB-9/10LINE TYPE CDP/MCS SOURCE 4 x 466 in³DFS IV 48 CHANNELSFORMAT: SEG BBPI 1600

JULIAN DATE	TIME GMT	TAPE #	FILE COUNT	DEPTH FM	POP RATE SEC	SAMP. RATE MSEC	REC. LEN. SEC	TRIP DEL. SEC	COMMENTS
17 Aug 1984	230	2302	255	520	20	4	20		C shot
		2302	256	521					F shot (TPX-2) 37, 40, 15, 20, 37, 34
		2311	256	540					C shot
		2311	257	547					F shot - LINE 10 - (TPX-1) 40, 42, 15, 20, 40, 35
		2332	257	612					gun #1 also off for compressor check
		2344	257	648					C shot
		2344	258	649					F shot (TPX-2) 35, 38, 15, 20, 37, 34
		2356	258	685					gun #1 back on
18 Aug 84	231	0017	258	748					LSHOT (TPX-2)
		0017	259	749					FSHOT (TPX-1) 37, 37, 13, 11, 34, 36
		0043	259	825					4 guns firing
		0051	259	848					LSHOT (TPX-1)
		0051	260	849					FSHOT (TPX-2) 37, 37, 13, 12, 38, 31
			260	863					decrease delay gun 4 from 15 → 14 milliseconds
		0125	260	950					LSHOT (TPX-2)
		0125	261	951					FSHOT (TPX-1) 36, 36, 14, 16, 29, 29
		0159	261	54					LSHOT TPX-1
		0159	262	55					FSHOT TPX-2 35-36-14-18-35-38
		0233	262	156					LSHOT TPX-2

RECORDING LOG

PAGE NO.

R/V CONRAD

AND R/V'S _____

GUN 4 down 0408 Z
(air use)DFS IV 34 CHANNELS
(25 dead)CRUISE 25-10AREA NEWFOUNDLAND BASINFORMAT: SEGBLINE NO. NB-10LINE TYPE MGS-CDP SOURCE 4 X 466 in³BPI 1600

JULIAN DATE	TIME GMT	TAPE #	FILE COUNT	DEPTH #M	POP RATE SEC	SAMP. RATE MSEC	REC. LEN. SEC	TRIP DEL. SEC	COMMENTS
									TRIGGER 12 13 13 14
231	0233	263	157	3478	20	4	12		FSHOT TPX-1 37-38-14-19-39-35
Aug	0300	263	236	3460					FSHOT SONOBUOY # 24
18	0307	263	258	-					LSHOT
	0307	264	259	3467					FSHOT TPX-2 37-38-14-19-34-31
	0315	264	277						changed trigger on gun 1 12-13-13-14
	0342	264	362						LSHOT TPX-2
	0342	265	363	3489					FSHOT TPX-1 36-35-13-18-36-35
	0410		###						GUNO # 4 down - misfiring
	0416	265	473						LSHOT TPX-1
	0416	266	474	3515					FSHOT TPX-2
	0450	266	567						LSHOT TPX-2
	0450	267	568	3540					FSHOT TPX-1 PESYNC ERROR 1ST SHOT (BIT RACE ERROR, LATE BIT)
	0524	267	669						LSHOT
	0524	268	670	3577					FSHOT TPX-2 FSHOT GOOD 35 35 14 16 35 34
	0558	268	771						LSHOT END SONOBUOY 24 @ 0530, SHOT 687
	0558	269	772	3634					FSHOT TPX-1 37 38 18 17 34 33
	0633	269	874						LSHOT
	0633	270	875	3730					FSHOT TPX-2
	0635	"	882						AIRGUN # 4 up Trigger delay 12-13-13-13

RECORDING LOG

PAGE NO. ~~34~~ 35R/V CONRAD AND R/V'S DFS IV 48 CHANNELSCRUISE 25-10 AREA Newfoundland BasinFORMAT: SEG BLINE NO. NB-10 LINE TYPE MCS-CDP SOURCE 4x466 in³BPT 1600

JULIAN DATE	TIME GMT	TAPE #	FILE COUNT	DEPTH FM	POP RATE SEC	SAMP. RATE MSEC	REC. LEN. SEC	TRIP DEL. SEC	COMMENTS
231	0707 0707	270	977		20	4	12	Ø	LSHOT
18 Aug	0707	271	978						FSHOT TPX-1 38 36 13 17 34 31
	0741	271	86						LSHOT
	0741	272	87						FSHOT TPX-2 38 37 13 16 35 30
	0800	"	1307						SB#25
	0815	272	184						LSHOT
	0816	273	185						FSHOT TPX-1 39 38 14 16 37 31
	0850	273	286						LSHOT
	0850	274	287						FSHOT TPX-2 38 38 15 18 38 34
	0924	274	389						LSHOT
	0925	275	390						FSHOT TPX-1 38 38 14 17 35 33
	0958	275	491	—					LSHOT
	0958	276	492						F shot (TPX-2) 37, 35, 14, 18, 36, 34
	1030	276	586						→ SB#25 ended ←
	1032	276	594						L shot
	1032	277	595						F shot (TPX-1) 38, 38, 14, 17, 36, 33
	1106	277	696						L shot
	1106	278	697						F shot (TPX-2) 38, 40, 15, 20, 35, 35
	1141	278	799						L shot

RECORDING LOG

PAGE NO. 36.

R/V Conrad

AND R/U'S n/a

CRUISE 25-10

AREA New Foundland Basin

LINE NO NB-10

LINE TYPE_____

SOURCE 4 x 466 in³ 2irguns

DFS IV 48 CHANNELS

FORMAT: SEG B

BFI 1600

[illegible]

RECORDING LOG

618
990PAGE NO. ~~36~~ 37R/V ConradDATE 8/18/84CRUISE 2570AREA Newfoundland BasinLINE NO. 16-10LINE TYPE Up SOURCE 4/16 in 3DFS IV 48 CHANNELSFORMAT: Self BBPT 1600

JULIAN DATE	TIME GMT	TAPE #	FILE COUNT	DEPTH FM	POP RATE SEC	SAMP. RATE MSEC	REC. LEN. SEC	TRIP DEL. SEC	COMMENTS
									TRIGGER 12 13 13 15
Aug 18/84 281	1526	286	475		20	$\frac{4}{12}$	12		FSHOT TPX-2 41 35 14 20 35 35
	1601	286	578						LSHOT TPX-2
	1601	287	579						FSHOT TPX-1
	1635	287	680						LSHOT
	1635	288	681						FSHOT SHOT TPX-2 42-37-13-18-35-30 SP 299 changed #4 to 145
	1709	288	784						LSHOT 12 13 13 14
	1709	289	785						FSHOT TPX-1 41-35-11-11-34-31
	1744	289	887						LSHOT
	1744	290	888						FSHOT TPX-2 40-35-14-19-35-31
	1818	290	990						LSHOT TPX-2
	1818	291	991						FSHOT TPX-1 43-40-15-19-37-34
	1852	291	93						LSHOT
	1852	292	94						FSHOT TPX-2 43-40-13-18-38-33
	1927	292	197			*	*	*	LSHOT [Tape has internal # of 201] SHOT 196 NOT ON TP
	1927	293	198						FSHOT TPX-1 42, 38, 12, 10, 34, 32
	2001	293	298						LSHOT TPX-1
	2001	294	299						FSHOT TPX-2 43, 37, 13, 17, 38, 33
	2014	294	336						LSHOT END LINE 10

RECORDING LOG

PAGE NO. 37... 38R/V CONRADAND R/V'S DFS IV 48 CHANNELSCRUISE 25-10AREA Newfoundland BasinFORMAT: SEGBLINE NO. NB-11LINE TYPE CDPSOURCE 4x466 in 3BPI 1600

JULIAN DATE	TIME GMT	TAPE #	FILE COUNT	DEPTH FM	POP RATE SEC	SAMP. RATE MSEC	REC. LEN. SEC	TRIP DEL. SEC	COMMENTS
									20x AIRGUN #1 IS
231	2014	295	337		20	4	12	Ø	FSHOT TPX-1 BEGIN LINE 11 40 43 19 20 39 34
15 AUG	2019	"	352						AIRGUN #1 IS OFF
	2027	1	377						AIRGUN #2 IS OFF
	2039	295	383						NOTICED TAPE ON TPX-1 rewinding — 10 of 10 mins 10 shots used
									lost IS UNKNOWN switched immediately to TPX-2
	2039	296	384						FSHOT TPX-2 32, 40, 20, 21, 39, 35
	2041	296							ch/delay on gun 4 14 → 15 msec
	2053	296							AIRGUN #2 up
	2057	296							AIRGUN #1 ON LINE
	2112	296	485						LSHOT
	2112	297	486						FSHOT TPX-1 36, 36, 12, 0, 2, 1 ⁴ DTS NEAR SURFACE
	2146	297	587						LSHOT
	2146	298	588						FSHOT TPX-2 61, 56, 21, 0, 0, 0 OH-OH!
	2221	298	689						Lshot going in circles, trying to bring streamer down
	2221	299	690						FSHOT (TPX-1) 45, 52, 21, 20, 45, 43
	2254	299	791						
	2254	300	792						F Shot (TPX-2) 40, 50, 20, 25, 48, 44
	2329	300	894						Lshot
	2329	201	895						Fshot (TPX-1) 30, 44, 20, 18, 48, 44 Line 11 incremented tardily #895

GARBAGE

RECORDING LOG

PAGE NO. ~~38~~ 39R/V ConradAND R/V'S —CRUISE 25-10AREA New Foundland BasinLINE NO NB-11LINE TYPE MCS/CDP SOURCE 4 x 466 in³ airgunsDFS IV 48 CHANNELSFORMAT: SEGBBPI 160019
Aug
1984

JULIAN DATE	TIME GMT	TAPE #	FILE COUNT	DEPTH FM	POP RATE SEC	SAMP. RATE MSEC	REC. LEN. SEC	TRIP DEL. SEC	COMMENTS
232	0003	301	996		20	4	12	Ø	2155Z; crossing the beginning point (again)
232	0003	302	997						FSHOT (TPX-2) 40, 42, 17, 24, 46, 43
	0036	302	98						LSHOT (TPX-2)
	0036	303	99						FSHOT (TPX-1) 43, 46, 15, 19, 43, 44
	0110	303	200						LSHOT (TPX-1)
	0110	304	201						FSHOT (TPX-2) 43, 48, 16, 21, 46, 43
	0144	304 301							LSHOT (TPX-2)
	0144	305	302						FSHOT (TPX-1) 42, 45, 15, 17, 43, 42
	0218	305 403							LSHOT TPX-1
	0218	306	404						FSHOT TPX-2 45-50-16-23-45-43
	0252	306	506						LSHOT
	0252	307	507						FSHOT TPX-1 43-46-16-19-43-42
	0315	307	573						FSHOT SONOBUOY #27
	0326	307	608						LSHOT
	0326	308	609						FSHOT TPX-2 44-47-15-19-45-44
	0400	308	711						LSHOT TPX-2
	0400	309	712						FSHOT TPX-1 43-47-16-19-46-44
	0434	309	813						LSHOT
	0435	310	814						FSHOT TPX-2 44-49-17-24-49-45

RECORDING LOG

PAGE NO. ~~39~~ 40R/V Conrad

AND R/V'S

19 AUG 84CRUISE 2510

AREA

Newfoundland BasinLINE NO. 113-11LINE TYPE CMPSOURCE 4/466 m³SB # 27LSHOT TAPE 311/SHT 978DFS IV 48 DATA CHANNELSFORMAT: SEGBBPI 1600

JULIAN DATE	TIME GMT	TAPE #	FILE COUNT	DEPTH FM	POP RATE SEC	SAMP. RATE MSEC	REC. LEN. SEC	TRIP DEL. SEC	COMMENTS
									TRIGGER 13/14/13/15
232	0509	310	916	916	20	4	12	0	LSHOT TPX-2
	0509	311	917	917					FSHOT TPX-1 42 46 15 18 45 44
	0545	311	21						LSHOT - LSHOT SB 27 @ 0530 SHOT 978
	0545	312	22						FSHOT TPX-2
	0619	312	124						LSHOT PLUS 2 XTRA MISC. SHOTS - not consecutive, #'s not known
	0619	313	125						* FSHOT TPX-1 44 47 16 19 44 42 THIS TAPE WAS MISTAKEN - LY UNLOADED WHILE ON
	0607	"	85						AIRGUN #2 DOWN - Broken firing cable LINE, 9 SHOTS WERE MISSED THE FIRST
	0626	313	141						* FSHOT GOOD SHOT IS LOGGED ON THIS LINE
	0656	313	228						LSHOT
	0656	314	229						FSHOT TPX-2 43 48 17 20 44 45
	0730	314	331						LSHOT
	0730	315	332						FSHOT TPX-1 42 48 16 22 48 45
?	0804	315	483						LSHOT MISSED 13 SHOTS
?	0808	316	484						FSHOT TPX-2
?	0813	316	449						LSHOT SHORT TAPE - DATA LIGHT - BAD?
?	0814	317	452						FSHOT TPX-1 MISSED 2 SHOTS
	0847	317	549						LSHOT TPX-1 (AT 0832 - 506 FILE # - INCREMENTED) HEADER TO 317.
	0847	318	550						FSHOT TPX-2 44, 48, 18, 21 46 45
	0920	318	652						LSHOT TPX-2 (AT 0903 (CLIN) #2 BACK IN WATER FIRING) SHOT # 612

↑ Explanation: Problems with tapes rewinding in wrong position
wind - rewind switch in wrong position

RECORDING LOG

PAGE NO. ~~45~~ 41R/V CONRAD

AND R/V'S

19-AUG-84CRUISE 25-10

AREA

NEWFOUNDLAND BASINLINE NO NB-11

LINE TYPE

MCS/CDP SOURCE 4 x 466 in³DFS IV 48 DATA CHANNELSFORMAT: Seq BBPI 1600

19 Aug
1984

JULIAN DATE	TIME GMT	TAPE #	FILE COUNT	DEPTH FM	POP RATE SEC	SAMP. RATE MSEC	REC. LEN. SEC	TRIP DEL. SEC	COMMENTS
232	0921	319	653						FSHOT TPX-1 40,48,20,20,48,44
	0955	319	754						L SHOT
	0955	320	755						FSHOT TPX-2 40,48,16,20,50,46
	1029	320	857						L shot
	1029	321	858						Fshot CTPX-1) 40,48,18,20,45,45
	1050	321	918						SB#28 deployed
	1103	321	959						L shot
	1103	322	960						Fshot (TPX-2) 40,47,17,25,50,45
		322	51						SYNC (PE) + PARITY ERRORS
	1137	322	63						L SHOT (TPX-2) Gun #2 down.
	1138	323	64						F SHOT (TPX-1) on 3 Guns.
	1211	323	164						L SHOT (TPX-1)
	1211	324	165						FSHOT (TPX-2) 42,48,18,25,49,47
	1245	324	265	224					L SHOT (TPX-2)
	1245	325	266						FSHOT (TPX-1) 42,46,12,23,50,45
	1250	325	280						end SB#28
	1318	325	366						PARITY ERRORS L SHOT (TPX-1)
		325	368						PARITY ERRORS
	1319	326	367						FSHOT (TPX-2) 44,47,11,21,45,45

RECORDING LOG

PAGE NO. 42R/V CONRAD

AND R/V'S _____

SB# 29 START REEL 328

CRUISE 25-10AREA NEWFOUNDLAND BASINDFS IV 48 CHANNELSLINE NO NB-11LINE TYPE BGS/CDP SOURCE 4X46610³FORMAT: SEG BBPI 1600

JULIAN DATE	TIME GMT	TAPE #	FILE COUNT	DEPTH FM	POP RATE SEC	SAMP. RATE MSEC	REC. LEN. SEC	TRIP DEL. SEC	COMMENTS
232	1319	326	367						PARITY ERRORS ← FSHOT TPX-2
	1319	326	368						PARITY ERRORS
	1338	326	423						#2 GUN FIRING, #4 GUN STOPPED FIRING
	1338	326	424						#4 GUN STOPPED FIRING
	1346	326	448						#4 GUN FIRING
	1352	326	468						LS 4 shots missing btwn. tape 326 & 327
	1355	327	472						FSHOT (TPX-1) 44, 49, 18, 10, 40, 44
	1429	327	573						LSHOT
	1429	328	574						FSHOT TPX-2 (FSHOT SB 29 @ 590, 123KZ)
	1503	328	676						LSHOT
	1503	329	677						FSHOT TPX-1
	1537	329	779						LSHOT
	1537	330	780						FSHOT TPX-2 44 49 19 17 36 39
	1612	330	882						LSHOT
	1612	331	883						FSHOT TPX-1 43-47-18-16-42-43 #978 Last shot SB#29
	1646	331	984						LSHOT
	1646	332	985						FSHOT TPX-2 43-49-17-7-29-40 (streamer noisy)
	1714	332	069						LSHOT TPX-2; LSHOT NB-11

AUG
84

RECORDING LOG

PAGE NO. ~~42~~ 43R/V CONRAD AND R/V'S _____DFS IV 48 CHANNELSCRUISE CONRAD 25-10 AREA NEWFOUNDLAND BASINFORMAT: SEGBLINE NO. NB-12/12 LINE TYPE MCS-CDP SOURCE 4X 466 in³BPT. 1600

JULIAN DATE	TIME GMT	TAPE #	FILE COUNT	DEPTH FM	POP RATE SEC	SAMP. RATE MSEC	REC. LEN. SEC	TRIP DEL. SEC	COMMENTS
232	1714	333	70		20	4	12		FSHOT TPX-1 ; SP 75 GUNS 13 4 OFF
AUG 19	1748	333	171						LSHOT TPX-1 44-49-19-18-44-44
	1748	334	172						30-23-9-18-44-42
	1810	334	240						GUNS TURNED OFF TAPE TAKEN OFFLINE IN ORDER TO FIX STREAMER!
		335							FSHOT TPX-1
233	AUG 20	0008	335	001					Fshot (TPX-1) → Begin Line 12 [#] (again)*
									38, 48, 37, 45, 55, 45
		0026	335						crossed line NB-11, streamer looks good & straight
		0042	335	103					* gun #2 off line; delays ① ③ ④ ② ③ ⑤
		0042	336	104					Fshot (TPX-2)
		0113	336	197					#3 gun off shot 197, reel 336
		0117	336	206					Lshot
		0117	337	207					Fshot (TPX-1) 45, 47, 42, 43, 50, 44
		0121	337	308					gun #3 back on line
		0151	337	308					LSHOT TPX-1
		0151	338	309					FSHOT TPX-2 45-49-47-45-52-45
		0225	338	412					LSHOT TPX-2
		0225	339	413					FSHOT TPX-1 44-47-44-44-52-42
		0239	339	454					GUN #2 ON

233

line 12

RECORDING LOG

PAGE NO. ~~43~~ 44R/V CONRAD

AND R/V'S _____

SB 30

DFS IV 48 CHANNELSCRUISE Z5-10AREA NEWFOUNDLAND BASINFORMAT: SEGBLINE NO. NB-12LINE TYPE MCS-CDP SOURCE 4x466 in3BPT. 1600

JULIAN DATE	TIME GMT	TAPE #	FILE COUNT	DEPTH FM	POP RATE SEC	SAMP. RATE MSEC	REC. LEN. SEC	TRIP DEL. SEC	COMMENTS
233	0245	339	472		20	4	12		LSHOT FSHOT SONOBUOY #30 0257 ⁰²⁵⁹ stop triggering for 2
Aug 20	0302	339	513						FSHOT TPX-2 SONOBUOY #30 LSHOT TPX-1 ^{with} 486
	0302	340	514						FSHOT TPX-2 45-46-43-43-52-44
	0336	340	616						LSHOT TPX-2
	0338	341	617						FSHOT TPX-1 45-50-45-44-53-48
	0410	341	718						LSHOT TPX-1
	0410	342	719						FSHOT TPX-2 46-46-46-44-54-73
	0445	342	821						LSHOT
	0445	343	822						FSHOT TPX-1 46-46-40-42-50-45
	0519	343	924						LSHOT
	0519	344	925						FSHOT TPX-2 45-45-40-42-46-45
	0554	344	955 028						END SB#30 SHOT 955
	0554	344	028						LSHOT
	0554	345	029						FSHOT TPX-1 42 46 45 46 52 45
	0628	345 346	130						LSHOT
	0628	346	131						FSHOT TPX-2 42 46 45 46 53 47
	0702	346	233						LSHOT SYSTEM
	0702	347	234						FSHOT TPX-1
	0704		235						SYSTEM CRASH - NO AIRGUNS, ETC BIG ROLL OF SHIP.

RECORDING LOG

PAGE NO. ~~44~~ 45R/V CANRADAND R/V'S —DFS IV 48 CHANNELSCRUISE 25-10AREA Newfoundland BasinFORMAT: SEGBLINE NO NB-12LINE TYPE CDPSOURCE 4 x 466 in³BPI 1600

JULIAN DATE	TIME GMT	TAPE #	FILE COUNT	DEPTH FM	POP RATE SEC	SAMP. RATE MSEC	REC. LEN. SEC	TRIP DEL. SEC	COMMENTS
237	0710	347	236		20	4	12	Ø	System Back up & working 18 missed shots?
20 AUG	0749	347	336						LSHOT
	0749	348	337						FSHOT TPX-2 43, 50, 46, 46, 50, 45
	0819	348	440						LSHOT
	0819	349	441						FSHOT TPX-1
	0853	349	543						LSHOT
	0853	350	544						FSHOT TPX-2 40, 45, 45, 45, 55, 47
	0928	350	649						LSHOT
	0928	351	648						FSHOT TPX-1 40, 46, 46, 42, 54, 48
	1002	351							malfunctioning gun; # 4 off
	1002	351	750						L shot
	1002	352	751						F shot (TPX-2) 41, 47, 43, 43, 50, 46
	1036	352	850						L shot
	1036	353	854						F shot (TPX-1) (1st shot sync error)
	1039	353	856						crashed (logger) Last shot
			33 missed shots						
	1050	353	857						F shot (TPX-2) parity + sync errors #863-866
	1056	354	874						L shot bad tape?
	1056	354	875						F shot (TPX-1) 39, 45, 45, 46, 55, 48

cancel

RECORDING LOG

PAGE NO. ~~56~~ 46R/V ConradAND R/V'S —CRUISE 25-10AREA Newfoundland BasinLINE NO. NB-12LINE TYPE MCS/CDP SOURCE 4 x 466 in3DFS IV 48 CHANNELSFORMAT: SEGBBPI 1600

airguns

JULIAN DATE	TIME GMT	TAPE #	FILE COUNT	DEPTH FM	POP RATE SEC	SAMP. RATE MSEC	REC. LEN. SEC	TRIP DEL. SEC	COMMENTS
233		354	974						Format fault
	1130	354	978						
	1130	355	979						F shot (TPX-2) parity + sync errors
	1134	355	991						L shot — short tape —
	1134	356	992						F shot (TPX-1) 40, 45, 46, 45, 52, 47
	1200	356							guns are firing VERY low, almost down.
									guns #2 & #4 are down
	1208	356	92						L SHOT (TPX-1)
	1208	357	93	A					F SHOT (TPX-2) 38, 46, 46, 46, 55, 47
	1241	357	192	B					L SHOT (TPX-2)
	1241	358	193						F SHOT (TPX-1) 39, 44, 45, 45, 54, 47
	1315	358	293						L SHOT (TPX-1)
	1315	359	294						F SHOT (TPX-2) parity error 40, 47, 46, 46, 54, 45
	1316	359	295						parity error
	1339	359	368						gun #4 start firing
	1348	359	394						L SHOT (TPX-2)
	1348	360	395						F SHOT (TPX-1) 42, 41, 45, 45, 55, 46
	1423	360	497						L SHOT

20
Aug
1974

~

RECORDING LOG

PAGE NO.

R/V Conrad~~ANTARCTICS~~ 20 August 84CRUISE 2510AREA Newfoundland BasinLINE NO. NP-12LINE TYPE CMP SOURCE 4 x 466 in³

① CRASH @ 1515

② UP @ 1521

DFS IV 48 CHANNELSFORMAT: DELBBPI 1600

JULIAN DATE	TIME GMT	TAPE #	FILE COUNT	DEPTH FM	POP RATE SEC	SAMP. RATE MSEC	REC. LEN. SEC	TRIP DEL. SEC	COMMENTS
									TRIGGER 12/14/13/15
233 20 AUG 84	1423	361	498		20	4	12	Ø	FSHOT TPX-2 40 45 45 45 55 45
	1457	361	599						LSHOT
	1457	362	600						FSHOT TPX-1 40 45 46 45 54 44
	1542	362	702						LSHOT 641 @ 1515 SYSTEM CRASH / SHOT 642 @ 1521 2 BACK UP
	1542	363	703						FSHOT TPX-2 18 shots missed
	1617	363	806						LSHOT
	1617	364	807						FSHOT TPX-1 42-47-49-49-55-45
	1623	364	825						4 guns in water & firing
	1649	364	899						Delay #4 changed 13 15 13-14
	1651	364	909						LSHOT
	1651	365	910						FSHOT TPX-2 44-48-49-49-53-45
	1725	365	014						LSHOT
	1725	366	015						FSHOT TPX-1 42-47-49-49-55-46
	1800	366	115						LSHOT
	1800	367	116						FSHOT TPX-2 45, 48, 47, 49, 56, 45
	1833	367	218						LSHOT
	1834	368	219						FSHOT 43, 45, 46, 47, 55, 46
	1908 1908	368 368	320 708						LSHOT
233	1908	369	321						FSHOT 46 TPX-2 46, 45, 45, 48, 53, 43

RECORDING LOG

PAGE NO. ... 48RV. CONRADAND R/V'S 20 AUG 84CRUISE 25/10AREA NEWFOUNDLAND BASINLINE NO. NB 12LINE TYPE CMPSOURCE 4*466 in³ Air GunsDFS IV 48 CHANNELSFORMAT: SEG BBPI 1600

JULIAN DATE	TIME GMT	TAPE #	FILE COUNT	DEPTH FM M	POP RATE SEC	SAMP. RATE MSEC	REC. LEN. SEC	TRIP DEL. SEC	COMMENTS
									TRIGGER DELAYS 13/15/13/14 MSEC
233	1908	369	321	3455	20	4	12	0	F SHOT TPX-2. 46, 45, 45, 48, 53, 43 (DEPTHs)
	1942	369	422						L SHOT
	1942	370	423						F SHOT TPX-1 43, 43, 44, 45, 52, 42
	2016	370	524						L SHOT
	2016	371	0525						F SHOT TPX-2 44 45 45 45 52 43
	2050	371	627						L SHOT
	2050	372	628						F SHOT TPX-1 42 45 45 45 53 44
	2124 2050	372	728						L SHOT
	2124	373	729						F SHOT TPX-2 43, 45 45 45 52 44
	2158	373	830						SB# 31 31 deployed - shot 830 reel 373
	2158	373	830						L shot
	2158	374	830						F shot (TPX-1) 45, 47, 45, 43, 51, 46
	2232	374	932						L shot
233	2232	375	933						F shot (TPX-2) 45, 50, 45, 42, 53, 47
	2306	375	035						L shot
	2306	376	36						F shot (TPX-1) 46, 47, 45, 42, 51, 45
	2340	376	136						
	2340	377	137						F shot (TPX-2) 46, 50, 47, 44, 53, 45
	2359	377	195						end SB# 31 shot 195 reel 377

RECORDING LOG

PAGE NO. ~~48~~ 49R/V ConradAND R/V'S —CRUISE 25-10AREA New Foundland BasinLINE NO. NB-12LINE TYPE CDP/MCS SOURCE 4 x 466 in³ SigsbeeDFS IV 48 CHANNELSFORMAT: SEG BBPI 1600

JULIAN DATE	TIME GMT	TAPE #	FILE COUNT	DEPTH FM	POP RATE SEC	SAMP. RATE MSEC	REC. LEN. SEC	TRIP DEL. SEC	COMMENTS
									TRIGGER 13/15/13/14
2 AUG 84	234	0013	377	237	20	4	12	Ø	LSHOT (TPX-2)
		0013	378	238					FSHOT (TPX-1) 45, 49, 46, 43, 51, 46
		0047	378	338					LSHOT (TPX-1)
		0047	379	339					FSHOT (TPX-2) 46, 45, 43, 43, 50, 45
		0120	379	439					LSHOT (TPX-2)
		0120	380	440					FSHOT (TPX-1) Parity errors on 1st 2 records
		0154	380	541					LSHOT 45/45/45/43/51/45
		0154	381	542					FSHOT TPX-2 Circuit breakers threw
		0159	381	546					LSHOT power out momentarily missed shots?
		0159	382	547					FSHOT 44-49-46-46-56-47 TPX-1
		0238	382	648					LSHOT
		0234	383	649					FSHOT TPX-2 -L05T 4 SHOTS 42-50-49-49-53-47
		0309	383	752					LSHOT TPX-2
		0309	384	753					FSHOT TPX-1 43-49-49-48-55-48
		0343	384	854					LSHOT
		0343	385	855					FSHOT TPX-2
		0417	385	956					LSHOT
		0417	385	957					FSHOT TPX-1 41 49 51 45 55 46
		0451	386	59	20	4	12	0	LSHOT

RECORDING LOG

PAGE NO. 50RV CorradDATE 21 AUGUST 84CRUISE 2501AREA Newfoundland BasinLINE NO NB-12LINE TYPE CMP SOURCE 2-4 466 m³DFS IV 48 CHANNELSFORMAT: SEG BBPI 1600

JULIAN DATE	TIME GMT	TAPE #	FILE COUNT	DEPTH FM	POP RATE SEC	SAMP. RATE MSEC	REC. LEN. SEC	TRIP DEL. SEC	COMMENTS	
									TRIGGER 13/15/13/14	
21 Aug 234	0451	387	60		20	4	12	Ø	FSHOT TPX-2	0436Z Gun alarm #2 blast phone shows weak, early pulse (air leak?). 1,3,4 look ok. Still recording. All 4 gun pressures low.
	0524	387	161						LSHOT	
	0525	388	162						FSHOT TPX-1	0444 #2 gun offline.
	0559	388	263						LSHOT	0449 #2 air hose parted/leaking. Guns
	0559	389	264						FSHOT TPX-2	134 operating @ normal pressures. Martin
	0633	389	366						LSHOT	on dock (again, jeez)
	0633	390	367						FSHOT TPX-1	41 47 50 49 54 49 Gun #3 - broken air line
	0707	390	468						LSHOT	Now on → <u>2 GUNS</u>
	0707	391	469						FSHOT TPX-2	35 42 45 37 45 44
	0742	391	571						LSHOT	
	0742	392	572						FSHOT TPX-1	35 43 46 39 46 44
	0815	392	673						LSHOT	
	0815	393	674						FSHOT TPX-2	Camera record @ 0829Z → data
	0850	393	776						LSHOT	noisy - high noise background
	0850	394	777						FSHOT	Gun #4 leaking. 40-45-48-38-48-44 because of only 2 guns? (Austin)
	0923	394	877						LSHOT	
	0923	395	878						FSHOT TPX-2	43, 48, 48, 48, 48, 45
	0958	395	980						*0941- BACK ON 4 GUNS	delays (13) (15) (13) (14)
	0958	396	981						Fshot (TPX-1)	42, 48, 49, 40, 48, 45

BEAUTIFUL
SUNRISE

RECORDING LOG

PAGE NO. 51...

R/U Conv 2d

AND R/V' S.

CRUISE 25-10

AREA Newfoundland Basin

LINE NO NB-12

LINE TYPE CDP/MCS SOURCE 4x466 in3 airguns

DFS IV 48 CHANNELS

FORMAT: SEG B

BFI 1600

21
Aug.
1984

JULIAN DATE	TIME GMT	TAPE #	FILE COUNT	DEPTH FM	POP RATE SEC	SAMP. RATE MSEC	REC. LEN. SEC	TRIP DEL. SEC	COMMENTS
234	1015	396	032		20	4	12	Ø	SB #32 reel-396 shot-32
	1032	396	083						Lshot
	1032	397	084						Fshot CTPX-2) 41, 47, 47, 40, 50, 43
	1106	397	186						Lshot
	1106	398	187						Fshot CTPX-1) 44, 48, 48, 42, 48, 45
	1125	398							data logger foul-up (possible 2 shots lost)
	1141	398	289						Lshot
	1141	399	290						Fshot CTPX-2)
	1215	399	392						Lshot
	1215	400	393	12					Fshot CTPX-1) 42, 49, 50, 44, 51, 47
	1225	400	421	—					Lshot End line 12
234	1225	401	422	13A					Begin Line 13 Fshot (TPX-2) 3 Guns #1, #2, #3
	1258	401	522						LSHOT (TPX-2)
	1258	402	523						FSHOT (TPX-1) 43, 29, 32, 35, 45, 53
	1332	402	624						LSHOT (TPX-1)
	1332	403	625						FSHOT (TPX-2) 41, 25, 30, 36, 50, 51
	1405	403	725						LSHOT
	1405								

line
13

RECORDING LOG

PAGE NO.

52

RV Unad~~ANDERSON~~ 21 August / 234

START SB# 33

DFS IV 48 CHANNELSCRUISE 2510AREA Newfoundland BasinFORMAT: SEL BLINE NO NB-13LINE TYPE cmpSOURCE 4 466.13BPI 1600

JULIAN DATE	TIME GMT	TAPE #	FILE COUNT	DEPTH FM	POP RATE SEC	SAMP. RATE MSEC	REC. LEN. SEC	TRIP DEL. SEC	COMMENTS
									TRIGGER 13/15/13/14
234	1406	404	726	3418					FSHOT TPX-1 40/25/33/35/47/47
	1439	404	827						LSHOT
	1440	405	828	3514					FSHOT TPX-2 SB# 33 FSHOT 782/REEL=404 @1425Z
	1514	405	929						LSHOT 1429Z GUN #4 back online
	1514	406	930	3563					FSHOT TPX-1 SB#33ADIED @ 1430Z
	1547	406	32						LSHOT FSHOT SB#33B 814 @ 1435/REEL=404
	1548	407	33	3559					FSHOT TPX-2 33B DIED @ ~1440Z
	1622	407	136						LSHOT FSHOT SB 33C 878 @ 1457/REEL=405
	1622	408	137	3559					FSHOT TPX-1 44-39-41-42-50-46
	1647	408	239						LSHOT TPX-1
	1647	409	240	3565					FSHOT TPX-2
	1700	409	248						LSHOT SONDBUOY #33
	1714	409	290						LSHOT changed delay on gun #4 to 16ms
	1731	409	341						LSHOT
	1731	410	342	3579					FSHOT TPX-1 47-40-40-40-54-49
	1804	410	443						LSHOT
	1805	411	444	3565					FSHOT TPX-2 45-37-37-42-54-51
	1838	411	544						LSHOT
	1838	412	545	3559					FSHOT TPX-1 45-36-38-42-53-39

21st
Aug
1984

RECORDING LOG

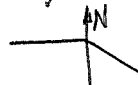
PAGE NO. ... 53

R/V CONRAD AND R/V'S B. 21 AUG / 234 (1984)
 CRUISE 2510 AREA NEW/FOUNDAIN BASIN
 LINE NO NB-13 LINE TYPE COP/MCS SOURCE 4 466 in³ AIRGUNS

DFS IV 48 CHANNELSFORMAT: SEGBBPT 1600

JULIAN DATE	TIME GMT	TAPE #	FILE COUNT	DEPTH FM	POP RATE SEC	SAMP. RATE MSEC	REC. LEN. SEC	TRIP DEL. SEC	COMMENTS
234	1912	412	645		20	4	12	Ø	LSHOT
	1912	413	646						FSHOT TPX-2 47, 47, 44, 45, 55, 50
	1947	413	750						LSHOT
	1947	414	751						FSHOT TPX-1 47, 46, 44, 45, 53, 47
	2022	414	853						LSHOT
	2022	415	854						FSHOT TPX-2 46 48 47 49 55 50
	2056	415	955						LSHOT
	2056	416	956						FSHOT TPX-1 46 49 49 51 58 52
	2130	416	059 060						LSHOT
	2130	417	060						FSHOT TPX-2 46 48 48 50 55 49
	2205	417	163						L shot
	2205	418	164						F shot (TPX-1) 45, 49, 47, 50, 57, 55
	2239	418	266						L shot
	2239	419	267						F shot (TPX-2) 46, 47, 47, 50, 55, 50
	2313	419	368						L shot
	2313	420	369						F shot (TPX-1)
	2347	420	470						L shot
	2347	421	471						F shot (TPX-2) 47, 47, 48, 50, 59, 50
		421	510						gun # 4 delay 16 → 18 ⁵ ms

RECORDING LOG

RV ConradAND R/V'S —CRUISE 25-10AREA Newfoundland BasinLINE NO NB-13/14LINE TYPE CDP/MCS SOURCE 4 x 466 in³ airgunsEND NB-13START NB-14PAGE NO. 54DFS IV 48 CHANNELSFORMAT: SEG BBPI 1600

22 Aug 1984

JULIAN DATE	TIME GMT	TAPE #	FILE COUNT	DEPTH FM	POP RATE SEC	SAMP. RATE MSEC	REC. LEN. SEC	TRIP DEL. SEC	COMMENTS
235	0021	421	572		20	4	12	Ø	LSHOT (TPX-2)
	0021	422	573						FSHOT (TPX-1) 48, 48, 47, 52, 56, 50
	0054	422	673						LSHOT (TPX-1)
	0054	423	674						48, 47, 46, 47, 58, 56 FSHOT (TPX-2) PARITY ERROR ON FILE 674
	0128	423	775						LSHOT (TPX-2)
	0128	424	776						FSHOT (TPX-1) 50, 45, 44, 47, 57, 48
	0156	424	858	0142	819				LSHOT TPX-1 END LINE #13
NB-14	0156	425	859						FSHOT TPX-2 FILE #15 859-868 mislabelled
	0230	425	960						LSHOT 47-47-44-46-52-50 ^{no shots missed}
	0230	426	961						FSHOT TPX-1 47-45-44-44-50-46
	0304	426	064	147					LSHOT
	0304	427	065						FSHOT TPX-2 52-52-49-49-54-45
	0330	427	140						FSHOT SONOBUOY #34
	0338	427	166						LSHOT
	0338	428	167						FSHOT TPX-1 48-49-45-47-55-44
	0412	428	268						LSHOT
	0412	429	269						FSHOT TPX-2 48-48-50-48-55-50
	0456	489	370						LSHOT

RECORDING LOG

PAGE NO. 55

R/V ONRADAND R/V'S 22 Aug 84 Day = 235CRUISE 2510AREA Newfoundland BasinLINE NO. NB-14LINE TYPE CMP SOURCE 4 / 4.66 x 10⁻² in³NB-14
SB-34DFS IV 4.8 x 10¹ CHANNELSFORMAT: SEG B MUXBPI 1.6 x 10³

JULIAN DATE	TIME GMT	TAPE #	FILE COUNT	DEPTH FM	POP RATE SEC	SAMP. RATE MSEC	REC. LEN. SEC	TRIP DEL. SEC	COMMENTS
									TRIGGER 13/15/13/15
235	0456	430	371	3340	20	250Hz	12	Ø	FSHOT TPX-1 46-46-45-45-52-45
	0520	430	472						LSHOT
	0520	431	473	3344					FSHOT TPX-2 45-45-45-46-52-45
	0555	431	574						LSHOT
	0555	432	575	3362					FSHOT TPX-1 44 45 45 46 51 45
	0629	432	676						LSHOT
*	0600	"	591						END OF SB#34
	0629	433	677	3355					FSHOT TPX-2 45 45 ⁴⁴ 42 50 43
	0703	433	779						LSHOT
	0703	434	780	3343					FSHOT TPX-1 45 44 43 42 47 39
	0737	434	882						LSHOT
	0737	435	883	3353					FSHOT TPX-2 47 43 37 39 44 40
	0810	435	982						LSHOT
	0810	436	983	3384					FSHOT TPX-1 43, 45, 45, 50, 43
	0843	436	83						LSHOT
	0844	437	84	3437					FSHOT TPX-2 43 43 43 43, 50, 42
	0917	437	184						LSHOT
	0917	438	185	3572					FSHOT TPX-1 43, 40, 39, 39, 47, 41
	0951	438	285						LSHOT

RECORDING LOG

PAGE NO. 56R/V CONRADAND R/V'S 22 Aug-1984 J day=235CRUISE 25-10AREA Newfoundland BasinLINE NO NB-14LINE TYPE CNPSOURCE 4/466 in³ airgunsDFS IV 48x10' CHANNELSFORMAT: SLQBNURBPI 1.6x10³

JULIAN DATE	TIME GMT	TAPE #	FILE COUNT	DEPTH FM	POP RATE SEC	SAMP. RATE MSEC	REC. LEN. SEC	TRIP DEL. SEC	COMMENTS
									TRIGGER 13/15/13/15
235	0951	439	286		20	250 _{Hz}	12	φ	Fshot 44, 43, 43, 42, 48, 39
			367						parity + sync
	1020	439	371						- 370 L shot
	1020	440	372						Fshot (TPX-1) 43, 43, 45, 43, 47, 40
	1054	440	473						L shot
	1054	441	474						Fshot (TPX-2) 40, 42, 45, 43, 50, 44
	1116	441							intermittent trace #26 - BAD -
	1120	441	559						gun #1 went down
									" back in the water
	1122								gun #4 out of water
	1128	441	576						L shot delay 16, 14, 13, 15
	1128	442	577						Fshot (TPX-1)
		442	581						gun #4 back in the water + firing
1133	442	590							SB #35
1135	442	600							SB #35
1202	442	678							L shot
1202	443	679							Fshot (TPX-2)
1205	443	687							parity + sync error
1207	443	692							L shot

RECORDING LOG

PAGE NO. 507R/V ConradAND R/V'S

END SB# 35

CRUISE 25-10AREA Newfoundland BasinDFS IV 48 CHANNELSLINE NO NB-14LINE TYPE CDP/MCS SOURCE 4 x 466 in³FORMAT: SEG BBPI 1600

22 AUG 84

JULIAN DATE	TIME GMT	TAPE #	FILE COUNT	DEPTH FM	POP RATE SEC	SAMP. RATE MSEC	REC. LEN. SEC	TRIP DEL. SEC	COMMENTS
235	1207	444	693		20	4	12	0	FSHOT (TPX-1) 41, 43, 43, 43, 48, 42
	1241	444	794						LSHOT (TPX-1)
	1241	445	795						FSHOT (TPX-2) 42, 45, 45, 43, 49, 43
	1248	445	816						LSHOT (TPX-2) parity errors, 811-815 (and sync errors)
	1248	446	817						FSHOT (TPX-1)
	1322	446	918						LSHOT (TPX-2)
	1322	447	919						FSHOT (TPX-2) 43, 44, 45, 43, 50, 42
		447	992-995-999						pointer to PE sync error last four shots
	1349	447	999						LSHOT (TPX-2)
	1349	448	1	1404	46				FSHOT TPX-1 (LSHOT SB# 35 = 33 / TAPE 448)
	1423	448	102	1415	77				LSHOT
	1423	449	103						FSHOT TPX-2
	1426	449	110						(LSHOT - MISSED 111) (LSHOT)
	1427	450	112						FSHOT TPX-1
	1501	450	214						LSHOT DRIVE TPX-2 WRITE HEAD
	1501	451	215						FSHOT TPX-2 SUSPECTED BAD. CONTINUOUS
	1504	452	225						LSHOT WRITE PARITY & SYNC ERRORS
	1505	452	226						FSHOT TPX-1 ON THIS DRIVE. NOW USING
	1514	452	230						LSHOT ~ 12 MISSED SHOTS TPX-1 ONLY.

end
VLA

start

RECORDING LOG

PAGE NO. 58

RV Conrad~~AND R/V'S~~ 8/22/84 235CRUISE 2510AREA Newfoundland BasinLINE NO. NB-14LINE TYPE CMPSOURCE 3x466in³

N.B. ↑

USING ONLY 1 DRIVE

(TPX-1) UNTIL REMEDIAL

ACTION IS TAKEN RE TPX-2

DFS IV 48 CHANNELSFORMAT: SEG B MPXBPI 1600

JULIAN DATE	TIME GMT	TAPE #	FILE COUNT	DEPTH FM	POP RATE SEC	SAMP. RATE MSEC	REC. LEN. SEC	TRIP DEL. SEC	COMMENTS
235	1515	453	2245	3650	70	1200	40		FSHOT <u>TPX-2</u> Parity 261, 262, 264 PE 261, 262 SC
22 AUG	1522	453	267						LSHOT SC/PE/Parity errors on probably all shots
	1522	454	268	3531					FSHOT TPX-1 1554±4 GUNS online
	1556	454	369						LSHOT MISSED 3 SHOTS AT TAPE CHANGE
	1557	455	370	3500					FSHOT TPX-1 1603± GUN 2 down again
	1632	455	473						LSHOT MISSED 7 SHOTS at tape change
	1634	456	474	3458					FSHOT 42-47-47-49-50-48
	1704	456	575						LSHOT Tape wind/rewind malfunctioned (operator)
	1713	457	576	3462					FSHOT Lost 215 shots 44-44-44-43-46-40
	1747	457	677						LSHOT changed tape drive head TPX-2
	1747	458	678	3447					FSHOT TPX-2 parity errors 1st shot
	1820	458	778						LSHOT 46-42-42-40-39-40 PE on 734
	1820	459	779	3469					FSHOT TPX-1 43, 30, 39, 42, 48, 42
	1833	459	815						LSHOT PE on 734, 1st shot on SB#36!
	1854	459	879						LSHOT BACK w/ (4 AIRGUNS - SHOT 829 at 1837)
	1854	460	880	3491					FSHOT TPX-2 42, 44, 40, 40, 40, 40
	1929	460	981						LSHOT
	1931	461	982	3509					FSHOT LOST 6 shots TPX-1 44, 38, 28, 32, 45, 40
235	2003	461	82						LSHOT

RECORDING LOG

PAGE NO. 39RV ConradAND R/V'S 8/22/84 235DFS IV 48 CHANNELSCRUISE 25-10AREA Newfoundland BasinFORMAT: Seq BLINE NO. NB-14LINE TYPE CMPSOURCE 4 x 466 in³BPI 1600

JULIAN DATE	TIME GMT	TAPE #	FILE COUNT	DEPTH FM	POP RATE SEC	SAMP. RATE MSEC	REC. LEN. SEC	TRIP DEL. SEC	COMMENTS
235	2003	462	83		20	12	40		FSHOT TPX-2
	2037	462	188 ⁵						LSHOT 43 42 42 42 49 41
	2038	463	188						FSHOT TPX-1 TAPE DID NOT RECORD AT FIRST - RETHREADED MISSED 22 SHOTS
	2109	"	280						END SB# 36
	2113	463	289						LSHOT
	2113	464	290						FSHOT TPX-2 42 42 42 42 47 42
	2147	464	392						LSHOT
	2147	465	393						FSHOT TPX-1 42 45 45 45 50 44
	2221	465	493	2204	443				Lshot
	2221	466	494						Fshot (TPX-2) 40, 41, 40, 40 48, 42
	2241	466	555						#37A Sonobuoy deployed - no signal
	2253	466	591						SB# 37 (try again)
	2255	466	596						Lshot
	2255	467	597						Fshot (TPX-1) 38, 42, 42, 43, 49, 44
	2329	467	698						Lshot
	2329	468	699						Fshot (TPX-2) 39, 42, 41, 41, 47, 44
		468	778						format fault
236	2403	468	801						Lshot
	2403	469	802						Fshot 40, 43 41 44 48 44

8-23-84
↓

RECORDING LOG

PAGE NO. 60..

R/V ConradAND R/V'S —CRUISE 25-10AREA Newfoundland BasinLINE NO NB-14LINE TYPE CDPSOURCE 4x466 in³ airgunsDFS IV 48 CHANNELSFORMAT: SEG BBPI 1600

23 Aug. 1984

JULIAN DATE	TIME GMT	TAPE #	FILE COUNT	DEPTH FM	POP RATE SEC	SAMP. RATE MSEC	REC. LEN. SEC	TRIP DEL. SEC	COMMENTS
236	0037	469	903		20	4	12	✓	LSHOT(TPX-1)
	0037	470	904						FSHOT(TPX-2) 40, 41, 42, 43, 48, 43
	0111	470	5						LSHOT(TPX-2)
	0111	471	6						FSHOT(TPX-1) 40, 43, 42, 43, 48, 48
	0122	471	35?						LSHOT - power off (accident!) 3 shots lost
	0122	472	36						FSHOT(TPX-2)
	0130	472	62						SB 37 off
	0156	472	137						LSHOT
	0156	473	138						FSHOT X-1 39-42-43-40-49-44
	0230	473	239						LSHOT
	0230	474	240						FSHOT TPX-2 40-41-42-40-45-40
	0236	474	258	0236	257				LSHOT
	0236	475	259						FSHOT TPX-1 <u>NB-15 START</u> 2x466 in³ 82
	0238	475	263						2x 466 in ³ 44-47-45-43-48-44
	0300	475	330						4x 466 in ³
	0310	475	360						LSHOT
	0310	476	361						FSHOT 39-43-44-44-52-42
	0329	476	418						Steady on line <u>NB-15</u>
	0344	476	463	0337	443				LSHOT

RECORDING LOG

PAGE NO. 61...

R/V CONRAD

AND R/V'S _____

DFS IV 48 CHANNELSCRUISE BC25-10AREA NEWFOUNDLAND BASINFORMAT: SEGBLINE NO NB-14/15LINE TYPE MCS-CDPSOURCE 4 X 466 in3 A.G.BPI 1600

JULIAN DATE	TIME GMT	TAPE #	FILE COUNT	DEPTH FM	POP RATE SEC	SAMP. RATE MSEC	REC. LEN. SEC	TRIP DEL. SEC	TRIGGER	COMMENTS
236	0344	474	464	3540	20	4	12	Ø	FSHOT TPX-1	34-30-22-27-44-42
23	0419	477	565						LSHOT	0410Z hammer v. shallow - attempting to
Aug '84	0419	478	566	3628					FSHOT TPX-2	Sink.
	0453	478	668						LSHOT	0420Z 34/25/20/15/30/40
	0453	479	669	3679					FSHOT TPX-1	
	0527	479	770						LSHOT	0438Z 46/40/20/22/10/11
	0527	480	771	3686					FSHOT TPX-2	0442Z Turning into seas to sink - birds
		480							FSHOT	
		480	778						Tape#	@ mid r' far offsets not responding
	0601	480	873						Tape#	incremented properly, to control signal: 49/40/16/4/16/11
	0601	481	874	3681					LSHOT	0449Z Head to wind (330°) - hold present crs
	0635	481	976						FSHOT TPX-1	~10-15' (50/45/5/0/0/0)
	0635	482	977	3752					LSHOT	43 36 40 41 57 53
	0710	482	082						FSHOT TPX-2	43, 47, 45, 45, 57, 49
	0710	483	083	3838					LSHOT	
	0745	483	184						FSHOT TPX-1	44, 47, 47, 47, 50, 50
	0745	484	185	3934					LSHOT	
	0818	484	285						FSHOT TPX-2	43, 46, 49 ⁴⁹ 57, 48
	0818	485	286	4054					LSHOT	
									FSHOT TPX-1	44, 47, 48, 47, 56, 48

Line counter
incremented
to NB-15Tape#
470

RECORDING LOG

PAGE NO. 62RV Conrad

AND R/V'S

DFS IV 48 CHANNELSCRUISE 25-10AREA Newfoundland BasinFORMAT: Seq BLINE NO. 15LINE TYPE MPS-CDP SOURCE 4 X 4 166 in³BPT 1600

JULIAN DATE	TIME GMT	TAPE #	FILE COUNT	DEPTH FM	POP RATE SEC	SAMP. RATE MSEC	REC. LEN. SEC	TRIP DEL. SEC	COMMENTS
236	0852	485	386		20	4	12	φ	LSHOT
23 Aug 1984	0852	486	387						FSHOT TPX-2 41, 43, 44, 44, 55, 47
	0925	486	487		410				LSHOT
	0925	487	488						FSHOT TPX-1 42, 45, 44, 44, 51, 45
	0959	487	589						Lshot
	0959	488	590						Fshot (TPX-2) 45, 43, 40, 40, 50, 45
	1029	488	679						#38 sonobuoy deployed reel: 488 shot: 679
	1034	488	692						Lshot
	1034	489	693						Fshot (TPX-1)
	1041	489	713						gun # 1 out of water
	1046	489	730						gun # 1 firing, in the water
	1046	489	731						gun # 4 out of water
	1054	489	752						gun # 4 back in + firing (gun delays 15, 14, 13, 15)
	1108	489	794						Lshot
	1108	490	795						Fshot (TPX-2) 45, 45, 45, 45, 51, 42
	1142	490	897						Lshot
	1142	491	898						Fshot (TPX-1) 44, 44, 42, 44, 52, 45
	1216	491	999						LSHOT (TPX-1)
	1216	492	1						FSHOT (TPX-2) 40, 45, 41, 41, 50, 44

RECORDING LOG

PAGE NO. 63R/V Conrad

AND R/V'S _____

SB # 39 FSHOT 498DFS IV 48 CHANNELSCRUISE 25-10AREA Newfoundland BasinTAPE 496FORMAT: SEG BLINE NO NB-15LINE TYPE MCS-CDPSOURCE 4 x 466 in³ airgunsBPI 1600

23 Aug 1984

JULIAN DATE	TIME GMT	TAPE #	FILE COUNT	DEPTH FM	POP RATE SEC	SAMP. RATE MSEC	REC. LEN. SEC	TRIP DEL. SEC	COMMENTS
									TRIGGER 15/13/14/15
236	1250	492	101		20	4	12	Ø	LSHOT (TPX-2)
	1250	493	102						FSHOT (TPX-1) 46, 46, 44, 43, 53, 42
	1300	493	130						SB # 38 end
	1324	493	204						LSHOT (TPX-1)
	1324	494	205						FSHOT (TPX-2) 43, 44, 41, 38, 52, 44
	1329	494	220?						Seabeam washed
	1359	494	307						LSHOT
	1359	495	308	1424	384				FSHOT TPX-1 45-42-40-40-51-44
	1433	495	410						LSHOT
	1433	496	411						FSHOT TPX-2 46-42-40-40-52-44
	1507	496	513						LSHOT → (FSHOT SB # 39A, over @ 1456 Z, shot 481 tape 496)
	1507	497	514						FSHOT TPX-1 45/42/41/40/50/45
	1541	497	614						LSHOT 1534Z CHARGE TRIGGER 16/13/14/15
	1541	498	615						FSHOT TPX-2 45-44-41-40-50-43
	1615	498	717						LSHOT
	1615	499	718						FSHOT TPX-1 45-44-42-42-52-48
	1650	499	820						LSHOT - LSHOT MAY BE BAD - DIDN'T REWIND PRIOR TO SHOT
	1650	500	821						FSHOT TPX-2
	1724	500	924						LSHOT TPX-2

HYDROPHONE DID NOT DEPLOY 39A

RECORDING LOG

PAGE NO. 64...R/V. CONRAD

AND R/V'S _____

DFS IV 48 CHANNELSCRUISE 25-10AREA NEWFOUNDLAND BASINFORMAT: SEGBLINE NO. NB-15LINE TYPE MCS-CDP SOURCE 4x466in³ A.G.BPI 1600

JULIAN DATE	TIME GMT	TAPE #	FILE COUNT	DEPTH FM	POP RATE SEC	SAMP. RATE MSEC	REC. LEN. SEC	TRIP DEL. SEC	COMMENTS
236	1724	501	925		20	4	12		FSHOT TPX-1 46-46-44-43-56-45
23 AUG	1749	501	999						LSHOT SB # 39
	1759	501	028						LSHOT
	1759	502	029						FSHOT TPX-2 47-47-47-47-55-47
	1832	502	129						LSHOT
	1832	503	130						FSHOT TPX-1 45-45-46-45-55-47
	1906	503	230						LSHOT
	1906	504	231						FSHOT TPX-2 47-47-42-39-47-43
	1940	504	333						LSHOT
	1940	505	334						FSHOT TPX-1 46/45/30/26/42/38
	2014	505	434						LSHOT
	2014	506	435						FSHOT TPX-2 46-44-43-28-42-40
	2028	506	475						SONOBUOY # 40 F/SHOT
	2058 2050	506	5 337						LSHOT
	2053	507	539						FSHOT TPX-1 46, 42, 34 37 51 44 LOST 12 SHOTS WHEN TPX-1 would not record
	2109	"	586						C/ TRIGGER DELAY 15/14/13/15
	2127	507	641						LSHOT
	2127	508	642						FSHOT TPX-2 46 41 27 23 42 41
	2202	508	744						L-shot

RECORDING LOG

PAGE NO. 65...

R/V Conrad

AND R/V'S _____

CRUISE 25-10AREA Newfoundland BasinLINE NO. NB-15/16LINE TYPE CDPSOURCE 4 x 466 in³ airgunsDFS IV 48 CHANNELSFORMAT: SEG BBPT 1600

JULIAN DATE	TIME GMT	TAPE #	FILE COUNT	DEPTH FM	POP RATE SEC	SAMP. RATE MSEC	REC. LEN. SEC	TRIP DEL. SEC	COMMENTS
236	2202	509	745		20	4	12	Ø	F shot CTPX-1) 45, 41, 27, 22, 40, 42
	2236	509	847						L shot
	2236	510	848						F shot CTPX-2) 47, 50, 50, 46, 55, 48
	2310	510	949						L shot
	2310	511	950						F shot CTPX-1) 47, 45, 45, 45, 59, 50
	2344	511	052						
	2344	512	53						F shot CTPX-2) 47, 46, 44, 45, 55, 46
24 Feb	237	0018	512	154					L shot (TPX-2)
	0018	513	155						F shot (TPX-1) 47, 46, 39, 40, 54, 46
	0019	513	158						last file of SB# 40
	0030	513	191						L shot (TPX-1) - END OF LINE NB-15
	0030	514	192						F shot (TPX-2) START OF LINE NB-16
	0104	514	292						L shot (TPX-2)
	0104	515	293						F shot (TPX-1) 45, 48, 51, 50, 57, 49
	0111	515	312						Data Logger crash - MCS logger stopped
	0120	515	313						Data Logger up for 1 shot
	0121	515	314						1 shot - good, Data Logger back up
	0127	515	331						All 4 guns again
	0148	515	394						L shot (TPX-1)

NB-16

RECORDING LOG

PAGE NO. 66R/V CONRAD~~AND R/V S.~~ 8/24/84SB # 41DFS IV 48 CHANNELSCRUISE 25-10AREA NEWFOUNDLAND BASINFORMAT: SEGBLINE NO. MB16LINE TYPE CDPSOURCE 4x466in³ airgunsBPI 1600

JULIAN DATE	TIME GMT	TAPE #	FILE COUNT	DEPTH FM	POP RATE SEC	SAMP. RATE MSEC	REC. LEN. SEC	TRIP DEL. SEC	COMMENTS
24 AUG 237	0148	516	395		20	4	12		FSHOT (TPX-2) 45, 52, 52, 50, 57, 50
	0222	516	497						LSHOT
	0222	517	498						FSHOT TPX-1 42-47-49-48-58-49
	0256	517	599						LSHOT
	0256	518	600						FSHOT TPX-2 47-47-46-46-57-49
	0330	518	700						FSHOT SB #41
	0331	518	702						LSHOT
	0331	519	703						FSHOT TPX-1 47-46-46-45-57-45
	0406	519	804						LSHOT Lost 3 shots
	0407	520	805						FSHOT 2 NO TAPE 520
	~ 0409	520	807						LSHOT 3 Bad tape NO DATA ON 520 Lost 2 4 shots
	~ 0409	521	808						FSHOT TPX-1 47-47-46-45-55-46
	0444	521	908						LSHOT
	0444	522	909						FSHOT TPX-2 46/46/46/48/50/52
	0518	522	12						LSHOT
	0518	523	13						FSHOT TPX-1 46/48/50/47/55/46
	0552	523	114						LSHOT
	0552	524	115						FSHOT TPX-2 47 49 19 49 56 48
	0627	524	217						LSHOT

no data

time may be wrong

RECORDING LOG

PAGE NO. 67...

R/V CONRADAND R/V'S DFS IV 48 CHANNELSCRUISE 25-10AREA Newfoundland BasinFORMAT: SEGBLINE NO. NB 16LINE TYPE CDPSOURCE 4x466 in³ airgunsBPI 1600

END SB#41

JULIAN DATE	TIME GMT	TAPE #	FILE COUNT	DEPTH FM	POP RATE SEC	SAMP. RATE MSEC	REC. LEN. SEC	TRIP DEL. SEC	COMMENTS
237	0627	525	218		20	4	12	Ø	FSHOT TPX-1 47 49 49 48 57 50
24 AUG	0630	525	227						L FS SHOT SONOBUOY #41
	0701	525	319						LSHOT
	0701	526	320						FSHOT TPX-2 47 47 46 46 56 49
	0736	526	423						LSHOT
	0736	527	424						FSHOT TPX-1 47, 48, 46, 45, 51, 48
	0810	527	525						LSHOT
	0810	528	526						FSHOT TPX-2 47, 46, 44, 45, 56, 46
	0843	528	625						LSHOT
	0843	529	626						FSHOT TPX-1 50, 47, 44, 44, 56, 45
	0910	529	706						SB#42- 1st SHOT
	0917	529	728						LSHOT
	0917	530	729						FSHOT TPX-2 48, 47, 46, 45, 56, 48
	0952	530	832						L Shot
	0952	531	833						F shot (TPX-1)
	1026	531	934						L shot
	1026	532	935						F shot (TPX-2) 50, 46, 42, 45, 50, 46
	1101	532	039						Lshot
	1101	533	040						F shot (TPX-1) 50, 48, 45, 43, 55, 47

RECORDING LOG

PAGE NO. 68...

R/V ConradAND R/V'S —CRUISE 25-10AREA Newfoundland BasinLINE NO DB-16LINE TYPE CDPSOURCE 4x466 in 3 airgunsDFS IV 48 CHANNELSFORMAT: SEGBBPI 1600

24 Aug 1984

JULIAN DATE	TIME GMT	TAPE #	FILE COUNT	DEPTH FM	POP RATE SEC	SAMP. RATE MSEC	REC. LEN. SEC	TRIP DEL. SEC	COMMENTS
									TRIGGER 14/13/12/13
237	1135	533	142		20	4	12	Ø	L shot
	1135	534	143						F shot CTPX-2 51, 47, 40, 43, 55, 45
	1200	534	217						end SB #42
	1209	534	245						L shot
	1209	535	246						F shot (TPX-1) 50, 45, 40, 52, 43, 45
	1230	535	306						End SB #42
	1243	535	347						LSHOT (TPX-1)
	1243	536	348						FSHOT (TPX-2) 50, 45, 36, 38, 51, 44
	1317	536	449						LSHOT (TPX-2)
	1317	537	450						FSHOT (TPX-1) 51, 48, 45, 45, 56, 46
	1350	537	550						LSHOT (TPX-1)
	1350	538	551						FSHOT (TPX-2) 50, 51, 50, 49, 58, 48
	1425	538	652						LSHOT
	1425	539	653						FSHOT TPX-1 45/51/51/50/57/50
	1459	539	754						LSHOT
	1459	540	755						FSHOT TPX-2 shot 671/15312 / TRIGGER 13/13/12/13
	1533	540	856						LSHOT
	1533	541	957						FSHOT TPX-1 48/50/51/50/56/49
	1606	541	958						LSHOT

RECORDING LOG

PAGE NO. 69

R/V Conrad AND R/V'S 8-24-84 jday = 237
 CRUISE 2510 AREA Newfoundland Basin
 LINE NO NB-16/NB-17 LINE TYPE CMP SOURCE 4 466 in 3

DFS IV 48 CHANNELSFORMAT: JEL-B MPXBPI 1.6×10^3 TRIGGER 13/13/12/13

JULIAN DATE	TIME GMT	TAPE #	FILE COUNT	DEPTH FM	POP RATE SEC	SAMP. RATE MSEC	REC. LEN. SEC	TRIP DEL. SEC	COMMENTS
8/24/84 234	1606	542	959			4	12		FSHOT TPX-2 46/52/51/50/59/50
	1630	542	28						LSHOT
	1630	543	29						FSHOT TPX-1 NB-17 Start 47-54-55-52-57-50
	1632	543	33						2 Airguns
	161704	543	131						LSHOT
	1704	544	132						FSHOT TPX-2 44-53-53-52-60-54
	1738	544	233						LSHOT
	1738	545	234						FSHOT TPX-1 50-49-49-48-58-49
	1811	545	334						LSHOT
	1812	546	335						FSHOT TPX-2 45-51-53-50-60-50
	1843	546 546	427						4 AIRGUNS
	1846	546	437						LSHOT
	1846	549	438						FSHOT TPX-1 (GUN 1 delay 13 → 15 ms 4 on shot 448) 45-55-55-55-63-54
	1920	547	537						L SHOT TPX-1
	1920	548	538						F SHOT TPX-2 43, 53, 54, 52, 61, 52
	1953	548	638						L SHOT
	1953	549	639						F SHOT TPX-1 47, 54, 53, 52, 60, 52
	2027	549	740						LSHOT
	2027	550	741						FSHOT TPX-2 45 52 53 53 58 52

RECORDING LOG

PAGE NO. 70...

R/V ConradAND R/V'S DFS IV 48 CHANNELSCRUISE 25-10AREA Newfoundland BasinFORMAT: SEGBLINE NO. NB-17LINE TYPE CDPSOURCE 4x466 in³ airgunsBPI 1600

SONOBUOY # 43

JULIAN DATE	TIME GMT	TAPE #	FILE COUNT	DEPTH FM	POP RATE SEC	SAMP. RATE MSEC	REC. LEN. SEC	TRIP DEL. SEC	COMMENTS
									TRIGGER DELAY 15/13/12/13
237	2101	550	842		20	4	12	Ø	LSHOT
24 Aug	2101	551	843						FSHOT TPX-1 47 52 53 52 57 50
	2118	551	892						SB # 43 FSHOT
	2135	551	944						LSHOT
	2135	552	945						FSHOT TPX-2 47 52 51 54 61 52
	2209	552	048						Lshot sync errors 1st 2 shots
	2209	553	049						Fshot (TPX-1) 47, 53, 53, 51, 60, 50
	2244	553	150						Lshot
	2244	554	151						Fshot (TPX-2)
	2318	554	254						Lshot
	2318	555	255						Fshot (TPX-1) 46, 54, 52, 51, 60, 52
	2352	555	356						Lshot
	2352	556	357						Fshot (TPX-2) 45, 52, 53, 53, 60, 53
238 25 AUG 84	0000	556	379						end SB # 43
	0026	556	458						LSHOT (TPX-2)
	0026	557	459						FSHOT (TPX-1) 47, 54, 54, 52, 60, 51
	0031	557	473						2 guns only (#1 + #4 are off)
	0044	557	511						3 guns only - #1, 2, 3
	0100	557	560						LSHOT (TPX-1)

RECORDING LOG

PAGE NO. 71...R/V CONRAD

AND R/V'S _____

DFS IV 48 CHANNELSCRUISE 25-10AREA NEWFOUNDLAND BASINFORMAT: SEGBLINE NO. MB-17LINE TYPE CDPSOURCE 4X466in³ AIRGUNSBPI 1600

JULIAN DATE	TIME GMT	TAPE #	FILE COUNT	DEPTH FM	POP RATE SEC	SAMP. RATE MSEC	REC. LEN. SEC	TRIP DEL. SEC	COMMENTS
									TRIGGER DELAYS 15/13/12/13
25 Aug 84	238	0100	558	561	20	4	12	0	FSHOT (TPX-2) 45, 55, 55, 53, 60, 52
		0134	558	662					LSHOT (TPX-2)
		0134	559	663					FSHOT (TPX-1) 46, 58, 54, 53, 60, 52 3 GUNS!
		0206	559	465					LSHOT
		0206	560	766					FSHOT TPX-2 46, 53, 50, 50, 60, 50
		0242	560	868					LSHOT servo problem TPX-1
		0242	561	868					FSHOT TPX-1 Lost 2 shots 46-53-54-54-59-49
		0245	561	870 869					FSHOT SB #44
		0310	561	946					4 GUNS on
		0318	561	970					LSHOT
		0318	562	971					FSHOT TPX-2 45-52-52-52-60-50
		0352	562	075					LSHOT
		0352	583	076	3 These shots were written over. Tape was reannotated and another 2/3 shots				FSHOT TPX-1 - BAD TAPE DRIVE -
		0355	563	077	by 564/565 were written to tape 563.				FSHOT LSHOT
		0355	564	078					FSHOT (LOST 2) 45-53-53-53-60-50 TPX-2
		~0425	564	? ~ 178/179	TAX-1 worked fine for shot 280				NO EOF/NO SHOT HEADER LAST UNKNOWN # OF SHOTS
		~0426	565	~179/180					MISSED ~ 4/5 SHOT FSHOT TPX-2
		0506	565	279					LSHOT
		0506	566	280					FSHOT TPX-1

RECORDING LOG

PAGE NO. 72R/V ConradDATE 25 August 84DFS IV 48 CHANNELSCRUISE 2510AREA Newfoundland BasinFORMAT: SEGB MPXLINE NO. NB-17LINE TYPE CMPSOURCE 4 466 in 3BPI 1600 BPI

Sonobuoy # 45

JULIAN DATE	TIME GMT	TAPE #	FILE COUNT	DEPTH FM	POP RATE SEC	SAMP. RATE MSEC	REC. LEN. SEC	TRIP DEL. SEC	COMMENTS
238	0539	566	380		20	4	12	Ø	LSHOT
	0539	567	381	A					FSHOT TPX-2 PESYNC ER/388/389 (MISSED/NO DATA RECORD)
	0613	567	482	B					LSHOT
	0613	568	483						FSHOT TPX-1 46 53 54 54 61 53
	0635	568	548						SB # 45 FSHOT
	0648	568	586						LSHOT
	0648	569	587						FSHOT TPX-2 45 54 55 53 60 52
	0722	569	689						LSHOT
	0722	570	690						FSHOT TPX-1 42 48 50 46 52 46
	0757	570	792						LSHOT
	0757	571	793						FSHOT TPX-2 42 49 50 49 53 49
	0830	571	893						LSHOT
	0830	572	894						FSHOT TPX-1 43 50 50 47 54 48
	0903	572	993						LSHOT
	0904	573	994						FSHOT TPX-2 43 50 50 47 54 47
	0915	573	27						KILL SB # 45 LSHOT
	938	573	99						LSHOT
	939	574	100						FSHOT TPX-1 44 50 50 47 53 48
	1013	574	201						Lshot

RECORDING LOG

PAGE NO. 73R/V ConradAND R/V'S CRUISE 25-10AREA Newfoundland BasinLINE NO NB-17LINE TYPE CDPSOURCE 4x466 in 3DFS IV 48 CHANNELSFORMAT: Seg BBPI 1600

	JULIAN DATE	TIME GMT	TAPE #	FILE COUNT	DEPTH FM	POP RATE SEC	SAMP. RATE MSEC	REC. LEN. SEC	TRIP DEL. SEC	COMMENTS
25 AUG	238	1013	575	202		20	4	12	Ø	TRIGGER DELAYS: 12, 12, 12, 3 Fshot (TPX-1)
		1047	575	304						Lshot
		1047	576	305						Fshot (TPX-2) 47, 50, 47, 47, 52, 50
		1121	576	406						Lshot
		1121	577	407						Fshot (TPX-1) 47, 49, 49, 46, 54, 46
		1155	577	509						Lshot
		1155	578	510						Fshot (TPX-2) 46, 50, 48, 45, 52, 48
		1229	578	610						LSHOT (TPX-1)
		1229	579	611						FSHOT (TPX-2) 47, 50, 48, 46, 53, 47
		1302	579	711						LSHOT (TPX-2)
		1302	580	712						FSHOT (TPX-1) 47, 51, 50, 49, 54, 50
		1310	580	732						SB #4/6 start
		1336	580	813						LSHOT (TPX-1)
		1336	581	814						FSHOT (TPX-2) 47, 50, 50, 46, 53, 50
		1411	581	916						LSHOT
		1411	582	917						FSHOT 51/50/48/50/52/50
		1445	582	18						LSHOT
		1445	583	19						FSHOT 49/50/48/47/50/50
		1518	583	120						LSHOT Guns #1, 8' 4 down @ 1506

(734)

RECORDING LOG

PAGE NO. 74R/V ConradAND R/V'S 25 August 84CRUISE 2510AREA Newfoundland BasinLINE NO. 17LINE TYPE CMPSOURCE 4466 in 3 airgunsDFS IV 48 CHANNELSFORMAT: SECT B MPXBPI 1600

JULIAN DATE	TIME GMT	TAPE #	FILE COUNT	DEPTH FM	POP RATE SEC	SAMP. RATE MSEC	REC. LEN. SEC	TRIP DEL. SEC	COMMENTS
									TRIGGER: 12/12/11/13
238	1518	584	121		20	4	12	Φ	FSHOT TPX-1 45/49/47/45/54/49
25 AUG	1552	584	222						LSHOT 1532Z: four guns online
	1552	585	223						FSHOT TPX-2
	1615	585	290						END SB #46
	16247	585	325						LSHOT TPX-2
	16247	586	326	B					FSHOT TPX-1 44-52-50-47-52-52
	1701	586	427	C					LSHOT
	1701	587	428						FSHOT TPX-2 44-50-49-46-54-47
	1705	587	440						GUN #3 FIRING INTERMITTENTLY - PULLING IN
	1735	588	530						LSHOT
	1735	588	531						FSHOT TPX-1 43-51-50-47-52-47
	1808	588	630						LSHOT
	1808	589	631						FSHOT TPX-2 43, 51, 52, 45, 53, 48
	1842	589	731						LSHOT
	1842	590	732						FSHOT TPX-1 45, 50, 50, 47, 53, 48
	1916	590	832						LSHOT (1856: W SHOT 773 - 4 GUNS BACK)
	1916	591	833						FSHOT TPX-2 46, 54, 52, 47, 53, 48
	1950	591	935						LSHOT
238	1950	592	936						FSHOT TPX-1 46, 52, 51, 50, 58, 53

RECORDING LOG

PAGE NO. (25)R/V CONRADAND R/V'S N/ADFS IV 48 CHANNELSCRUISE RC25-16AREA NEWFOONLAND BASINFORMAT: SEG BLINE NO. 17LINE TYPE CMPSOURCE 4x466IN³ AIRGUNBPI 1600

JULIAN DATE	TIME GMT	TAPE #	FILE COUNT	DEPTH FM	POP RATE SEC	SAMP. RATE MSEC	REC. LEN. SEC	TRIP DEL. SEC	COMMENTS
1984									GUN TRIGGER DELAY'S 12/12/11/13
238	2024	592	38		20	4	12	Ø	LSHOT
25 AUG	2024	593	39						FSHOT TPX-2 47,54,52, 48,53,52
	2059	593	141						LSHOT
	2059	594	142						FSHOT TPX-1 45 51 52 48 52 49
	2133	594	243						LSHOT
	2133	595	244						FSHOT TPX-2 45 50 50 46 53 50
	2144	595	279						AIRGUNS DOWN (ALARM) Very low pressure
		595	298						disregard
	2153	595	305						guns #1 & #4 firing, weak #2, no #3
	2204	595	338						SB# 47 deployed; F's reel: 595 shot: 338
	2207	595	346						Lshot
	2207	596	347						Fshot (TPX-1) 45,50,51,45,54,49
		408							delay change: gun #1 (12→13) gun #2 (12→13)
		596	408						delay change: gun #1 (12→11) gun #2 (12→13)
	2241	596	448						Lshot
	2241	597	449						Fshot (TPX-2) 45,51,51,47,55,50
	2316	597	553						Lshot
	2316	598	554						Fshot (TPX-1) 46,53,50,50,55,53
	2338	598	621						4 guns firing

RECORDING LOG

PAGE NO. 76...

R/V ConradAND R/V'S —CRUISE 25-10AREA Newfoundland BasinLINE NO. NB-17/18LINE TYPE CDPSOURCE 4x466 in 3 airgunsDFS IV 98 CHANNELSFORMAT: SEG BBPI 160025 Aug
1984

JULIAN DATE	TIME GMT	TAPE #	FILE COUNT	DEPTH FM	POP RATE SEC	SAMP. RATE MSEC	REC. LEN. SEC	TRIP DEL. SEC	GUN TRIGGER DELAYS: 11, 13, 11, 13	COMMENTS
238	2350	598	654						L shot	
	2350	599	655						F shot (TPX-2)	
239	0023	599	754						L SHOT (TPX-2)	
	0023	600	757						F SHOT (TPX-1) 45, 50, 50, 50, 56, 51	
	0028	600	771						SB # 47 END	
	0057	600	857						increase delay on gun 3 from 11-712 ms L shot (TPX-1)	
	0057	601	858						46, 51, 50, 45, 55, 48 F shot (TPX-2) increase delay on gun 3 from 11-712 ms	
	0131	601	959						L SHOT (TPX-2)	
	0131	602	960						F SHOT (TPX-1) 44, 52, 50, 45, 56, 56	
	0205	602	062						L SHOT	
	0205	603	063						F SHOT TPX-2 44-55-52-49-53-50	
	0240	603	166						L SHOT	
	0240	604	167						F SHOT TPX-1 44-55-53-48-57-53	
	0314	604	269						L SHOT	
	0314	605	270						F SHOT TPX-2 44-53-52-51-57-57	
	0327	605	309						L SHOT LINE NB-17	
	0327	606	310						F SHOT TPX-1 47-53-53-52-58-54 START NB-18	
	0402	606	411						L SHOT Trigger delays 11-12-12-13	

26 Aug

NB-18

RECORDING LOG

PAGE NO. 77...

R/V CONRADAND R/V'S 8/26/84CRUISE 75-10AREA NEWFOUNDLAND BASIN

NB-18

DFS IV 48 CHANNELSFORMAT: SEG BLINE NO. NB-18LINE TYPE CDPSOURCE 4x466in³BPT 1600

JULIAN DATE	TIME GMT	TAPE #	FILE COUNT	DEPTH FM	POP RATE SEC	SAMP. RATE MSEC	REC. LEN. SEC	TRIP DEL. SEC	COMMENTS TRIGGER 11/12/12/13
239	0402	607	412		20	4	12		FSHOT TPX-2 46-50-48-47-53-60
26 AUG	0436	607	515						LSHOT
	0436	608	516						FSHOT TPX-1 45/52/50/50/60/55
	0510	608	617						LSHOT
	0510	609	618						FSHOT TPX-2
	0544	609	720						LSHOT
	0544	610	721						FSHOT TPX-1 45/46/45/44/50/48
	0619	610	822						LSHOT
	0619	611	823						FSHOT TPX-2 43 45 44 42 46 46
	0653	611	925						LSHOT
	0653	612	926						FSHOT TPX-1 43 46 46 45 53 46
	0727	612	028						LSHOT
	0727	613	029						FSHOT TPX-2 43 45 46 44 50 48
	0801	613	131						LSHOT
	0801	614	132						FSHOT TPX-1 43 47 45 45 52 45
	0834	614	232						LSHOT
	0835	615	233						FSHOT TPX-2 44, 49, 46, 45, 50, 45
	0909	615	335						LSHOT RE NB-18
	0909	616	336						FSHOT TPX-1 Begin NB-19 40, 46, 46, 44, 50, 47

RECORDING LOG

PAGE NO. 78...

R/V Conrad

AND R/V'S

8/26/84CRUISE 25-10

AREA

Newfoundland BasinLINE NO. NB-19

LINE TYPE

COP

SOURCE

4 x 466 in³ airgunDFS IV 48 CHANNELSFORMAT: SEQ BBPI 1600

JULIAN DATE	TIME GMT	TAPE #	FILE COUNT	DEPTH FM	POP RATE SEC	SAMP. RATE MSEC	REC. LEN. SEC	TRIP DEL. SEC	COMMENTS
²³⁹ 26 Aug 84	0928	616	386		20	4	12		GUN TRIGGER DELAY: 10, 12, 12, 12 LSHOT 4% SYNC ERROR - LOST ~4-2 SHOTS (³⁸³ 384, ³⁸⁵ 386)
	0928	617	387						FSHOT TPX-2 40, 43, 43, 42, 45, 47
	1003	617	492						Lshot (SHOT 416, SYNC ERROR)
	1003	618	493						Fshot (TPX-1)
	1030	618	573						SB#48 deployed
	1037	618	594						Lshot
	1037	619	595						Fshot (TPX-2) 41, 43, 44, 44, 49, 47
	1111	619	697						Lshot
	1111	620	698						Fshot (TPX-1) - bad tape?
	1139	620	780						40 45 45 40 46 45 Lshot ^{ear} _{oot}
	1139	621	781						Fshot (TPX-2) 40, 44, 43, 40, 46, 45
	1200	621	845						gun #4 down to service compressor #2
	1213	621	882						LSHOT (TPX-2)
	1213	622	883						FSHOT (TPX-1) 40, 42, 41, 42, 46, 48
	1240	622	962						GUN #4 ON! - ALL 4 GUNS
	1247	622	984						LSHOT (TPX-1)
	1247	623	985						FSHOT (TPX-2) 41, 44, 42, 40, 46, 44
	1320	623	86						LSHOT (TPX-2)
	1323	624	88						FSHOT (TPX-1) 6 SHOTS MISSED

RECORDING LOG

PAGE NO. 79R/V CONRADAND R/V'S 26 AUG 84DFS IV 48 CHANNELSCRUISE 25-10AREA NEWFOUNDLAND BASINFORMAT: SEGBLINE NO. NB-19LINE TYPE CDPSOURCE 4x466in³ airgunsBPI 1600

JULIAN DATE	TIME GMT	TAPE #	FILE COUNT	DEPTH FM	POP RATE SEC	SAMP. RATE MSEC	REC. LEN. SEC	TRIP DEL. SEC	COMMENTS
									GUN TRIGGER DELAYS: 9/12/11/12
239	1330	624	109		20	4	12		LAST SHOT FOR SB# 48
	1337	624	129						2 SHOTS MISSED LSHOT (TPX-1) SHOT TAPED - it stopped.
	1337	625	130						FSHOT (TPX-2) 40, 44, 42, 40, 46, 45
	1412	625	232						LSHOT
	1412	626	233						FSHOT TPX-1 worked fine whole reel
	1445	626	335						LSHOT
	1445	627	336						FSHOT TPX-2 42/44/41/41/45/45
	1520	627	436						LSHOT NODATA: 386/387
	1520	628	437						FSHOT TPX-1 worked fine whole reel
	1553	628	538						LSHOT
	1554	629	539						FSHOT TPX-2 40/44/44/40/45/44
	1628	629	640						LSHOT
	1628	630	641						FSHOT TPX-1 42-43-40-38-47-44
	1702	630	742						LSHOT
	1702	631	743						FSHOT TPX-2 39-40-39-38-45-42
	1711	631	743						SENOBUOY # 49 FSHOT
	1736	631	845						LSHOT T
	1736	632	846						FSHOT TPX-1
1809	1809	632	946	946					LSHOT 49-40-40-49-45-42

RECORDING LOG

PAGE NO. 80R/V Conrad

AND R/V'S

26-Aug 1984CRUISE 25-10

AREA

Newfoundland BasinLINE NO NB-19

LINE TYPE

KDP

SOURCE

4x4660 in³ airgunsDFS IV 48 CHANNELS

FORMAT:

Seq B

BPI

1600

JULIAN DATE	TIME GMT	TAPE #	FILE COUNT	DEPTH FM	POP RATE SEC	SAMP. RATE MSEC	REC. LEN. SEC	TRIP DEL. SEC	COMMENTS
239	1810	633	947		20	4	12		FSHOT TPX-2 40, 42 42, 48, 45, 40
	1842	633	47						LSHOT
	1843	634	48						FSHOT TPX-1 39, 39, 40, 39, 44, 39
	1916	634	148						LSHOT
	1917	635	149		NO TAPE 635				FSHOT TPX-2 FAILED - MISSED 3 SHOTS. ⁶³⁵⁼ BAD REEL
	1918	636	150						FSHOT TPX-1 39, 39, 39, 36, 41, 38
	1937	637	208						LAST SHOT S.B. # 49
	1952	637	251						LSHOT
	1952	637	252	A					FSHOT TPX-2
	2027	637	355	B					LSHOT
	2027	638	356						FSHOT TPX-1 40 41 41 37 42 39
	2101	638	458						LSHOT
	2101	639	458						FSHOT TPX-2 40, 40, 39 36 43 37
	2135	639	561						LSHOT
	2135	640	562						FSHOT TPX-1 40 40 40 32 42 39
	2209	640	663						LSHOT
	2209	641	664						Fshot (TPX-2) 38, 40, 40, 35, 42, 39
	2244	641	766						LSHOT
	2244	642	767						Fshot (TPX-1) 41, 42, 40, 40, 45, 40

RECORDING LOG

PAGE NO. 81...

R/V ConradAND R/V'S CRUISE 25-10AREA Newfoundland BasinLINE NO. NB-19LINE TYPE CDPSOURCE 4 x 466 in 3 airgunsDFS IV 48 CHANNELSFORMAT: Seg BBPI 160026
Aug
1981

JULIAN DATE	TIME GMT	TAPE #	FILE COUNT	DEPTH FM	POP RATE SEC	SAMP. RATE MSEC	REC. LEN. SEC	TRIP DEL. SEC	COMMENTS
239	2318	642	867						gun delay 9, 12, 11, 12 L shot
	2318	643	868						Fshot (TPX-2) 41, 40, 40, 40, 45, 40
	2352	643	970						L shot
	2352	644	971						Fshot (TPX-1) 41, 43, 41, 40, 45, 42
27 AUG 240	240	0026	644	173					LSHOT (TPX-1)
	0026	645	174						FSHOT (TPX-2) parity error on file 174. 40, 42, 42, 39, 46, 42
	0100	645	175						LSHOT (TPX-2)
	0100	646	176						FSHOT (TPX-1) 40, 42, 40, 39, 46, 43
	0122	646	243 176						SB#50 start
	0134	646	277						LSHOT (TPX-1)
	0134	647	278						FSHOT (TPX-2)
	0139	648	280 279	289					LSHOT (TPX-2) 1 shot lost?
	0139	648	291						FSHOT (TPX-1)
	0213	648	391						LSHOT
	0213	649	392						FSHOT (TPX-2) 40-40-40-38-45-41
	0247	649	493						LSHOT
	0247	650	494						FSHOT (TPX-1) 40-42-42-40-51-44
	0321	650	595						LSHOT
	0321	651	596						FSHOT (TPX-2) 41/45/44/42/50/44

RECORDING LOG

PAGE NO. 82...

82

R/V CONRADAND R/V'S 27 AUGUST 1984DFS IV 48 CHANNELSCRUISE 25-10AREA NEWFOUNDLAND BASINFORMAT: SEGBLINE NO. NB-19LINE TYPE CDPSOURCE 4 x 466 in 3BPI 1600

SB's # 49, 50

JULIAN DATE	TIME GMT	TAPE #	FILE COUNT	DEPTH FM	POP RATE SEC	SAMP. RATE MSEC	REC. LEN. SEC	TRIP DEL. SEC	COMMENTS
									TRIGGERS: 10/12/11/11
240	0355	651 546	648		20	4	12		LSHOT 39-44-43-42-49-42
	0355	652 547	699	B					FSHOT TPX-1 2
	0429	652	800	C					LSHOT
	0429	653	801						FSHOT TRX-2 SB#49 END SHOT 804 @ 0430Z
	0503	653	903						LSHOT
	0503	654	904						FSHOT TPX-1 39/42/45/42/50/45
	0522	654	959						LSHOT SHORT REEL / DRIVE FAILED / NO SHOTS LOST
	0523	655	960						FSHOT TPX-2 40/41/46/44/45/46
	0556	655	063						LSHOT
	0556	656	064						FSHOT TPX-1 36 42 45 42 50 45
	0630	656	166 165						LSHOT
	0630	657	166						FSHOT TPX-2 36 44 45 42 49 45
	0700	657	253 253						SB#50 FSHOT
	0705	657	269						LSHOT
	0705	658	270						FSHOT TPX-1 39 44 44 42 49 45
	0739	658	371						LSHOT
	0739	659	372						FSHOT TPX-2 40 47 45 43 50 45
	0812	659	472						LSHOT
	0813	660	473						FSHOT TPX-1 38-45-46-43-51-45

RECORDING LOG

PAGE NO... 83.

R/V Censad

AND R/V'S

27 Aug 1984 (240-J)CRUISE 25-10

AREA

Newfoundland BasinLINE NO NB-19

LINE TYPE

COP

SOURCE

4 x 46 bin 3DFS IV 48 CHANNELS

FORMAT:

SAB

BPI

1600

JULIAN DATE	TIME GMT	TAPE #	FILE COUNT	DEPTH FM	POP RATE SEC	SAMP. RATE MSEC	REC. LEN. SEC	TRIP DEL. SEC	COMMENTS
240	0846	660	573		20	4	12		L SHOT
	0846	661	574						F SHOT TPX-2 (SHOT 583 - KILL SB 51) 43-45-45 - 43-51-46
	0920	661	674						L SHOT
	0920	662	675						F SHOT TPX-1 39 46 47 44 52 49
	0953	662	775						L SHOT
	0954	663	776						F SHOT TPX-2 39 43 45 43, 52, 46
	1028	663	877						L shot
	1028	664	878						F shot (TPX-1) 37, 43, 45, 40, 50, 45
	1045	664	929						SB # 52 launched
	1102	664	979						L shot
	1102	665	980						F shot (TPX-2) 35, 40, 43, 40, 50, 51
	1128		059						gun # 1 off
	1134		077						gun # 1 back in h2o - firing
	1134		078						gun # 2 & off
	1136	665	083						L shot
	1136	666	084						F shot (TPX-1) 40, 45, 45, 40, 46, 44
	1139		093						all four guns firing again
	1210	666	185						L shot (TPX-1)
	1210	667	186						F shot (TPX-2) 35, 43, 45, 39, 46, 44

RECORDING LOG

PAGE NO. 84R/V COMRADAND R/V'S 27 AUG 84DFS IV 48 CHANNELSCRUISE 25-10AREA NEWFOUNDLAND BASINFORMAT: SEGBLINE NO. NB-19LINE TYPE CDPSOURCE 4x46610³BPI 1600

JULIAN DATE	TIME GMT	TAPE #	FILE COUNT	DEPTH FM	POP RATE SEC	SAMP. RATE MSEC	REC. LEN. SEC	TRIP DEL. SEC	COMMENTS
27 Aug 240									GUN TRIGGER DELAYS: 10, 11, 11, 12
	1243	667	282						change GUN DELAYS → 10, 11, 10, 12
	1244	667	286						LSHOT (TPX-2)
	1244	668	287	C					FSHOT (TPX-1) 31, 40, 42, 35, 43, 43
	1318	668	388	D					LSHOT (TPX-1)
	1318	669	389						FSHOT (TPX-2) 30, 38, 42, 35, 44, 42
	1345	669	469						END SB #52
	1352	669	492						LSHOT
	1352	670	493						FSHOT TPX-1
	1426	670	594						LSHOT
	1426	671	595						FSHOT TPX-2 31/36/45/35/38/46
	1501	671	696						LSHOT 1441: #4 gun down - Martin on deck
	1502	672	697						FSHOT TPX-1 missed 2 shots
	1536	672	799						LSHOT → 29/35/43/36/40/45 hypomagnetic tension arm shots 725/726/727
	1536	673	800						FSHOT TPX-2 30/39/45/37/44/49
	1611	673	903						LSHOT
	1611	674	904						FSHOT TPX-1
	1614	674	913						4 AG's on line
	1645	674	006						LSHOT
	1645	675	007						FSHOT 35-42-37-36-46-#7

RECORDING LOG

PAGE NO. 85R/V CONRAD AND R/V'S _____DFS IV 48 CHANNELSCRUISE 25-10 AREA NEWFOUNDLAND BASINFORMAT: SEG BLINE NO. NB-19/20 LINE TYPE CDP SOURCE 4x466m³BPI 1600

JULIAN DATE	TIME GMT	TAPE #	FILE COUNT	DEPTH FM	POP RATE SEC	SAMP. RATE MSEC	REC. LEN. SEC	TRIP DEL. SEC	COMMENTS
		Start @ 007							Trigger delays 10, 11, 10, 12
240	1719	675	110		20	4	12		LSHOT TPX-2
27 AUG	1719	676	111						FSHOT TPX-1 42-44-48-36-42-43
1984	1753	676	212						LSHOT
	1753	677	213						FSHOT TPX-2
	1827	677	313						LSHOT
	1827	678	314						FSHOT TPX-1 38-45, 50, 38, 45, 48
	1847	678	372						LSHOT ON NB-19
	1847	679	373						FSHOT TPX-2 SHOT 374 - Line # incremented to <u>NB-20</u>
	1920	679	473						LSHOT 42-50-49-46-52-49
	1920	680	474						FSHOT TPX-1 43-48-49-38-48-48
	1954	680	575						LSHOT
	1954	681	576						FSHOT TPX-2 44-51-53-32-50-48
	2029	681	678						LSHOT
	2029	682	679						FSHOT TPX-1 45 50 51 39 47 49
	2103	682	780						LSHOT
	2103	683	781						FSHOT TPX-2 43 50 53 36 51 49
	2106	683	792						CHG. DELAY ON AIRGUN 4 FROM 12 to 11 ms.
	2137	683	884						LSHOT
	2137	684	885						FSHOT TPX-1 43 50 52 36 47 49

RECORDING LOG

PAGE NO. 86...R/V CONRADAND R/V'S DFS IV 48 CHANNELSCRUISE 25-10AREA NEWFOUNDLAND BASINFORMAT: SEGBLINE NO. NB20/21LINE TYPE CDPSOURCE 4x466 in³ airgunsBPI 1600

JULIAN DATE	TIME GMT	TAPE #	FILE COUNT	DEPTH FM	POP RATE SEC	SAMP. RATE MSEC	REC. LEN. SEC	TRIP DEL. SEC	COMMENTS
									TRIGGER DELAYS 10-11-10-11
240	22 1005	684	970		20	4	12	0	gun #3 off
27 AUG 84	22 10 11	684	985						L shot
	22 10 11	685	986						F shot CTPX-2) 42,47,47,40,45,46
	22 10 46	685	089						L shot
	22 10 46	686	090						F shot CTPX-1) 43,51,53,39,46,50
	2319	686	191						L shot
	2319	687	192						F shot CTPX-2) 41,47,50,38,54,50
	2354	687	294						L shot
	2354	688	295						F shot CTPX-1) 42,50,51,35,41,45
28 AUG 84	241 0028	688	386 385						LSHOT CTPX-1)
	0028	689	397						F SHOT CTPX-2) 42,46,52,39,50,50
	0102	689	498						LSHOT CTPX-2)
	0102	690	499						F SHOT CTPX-1) 43,50,51,36,50,48
	0110	690	521						4 GUNS FIRING
	0115	690	538						delay on gun 3 from 10-12 milliseconds
	0136	690	600						LSHOT CTPX-1)
	0136	691	601						F SHOT CTPX-2)
	0140	691	613						LSHOT CTPX-2) END OF LINE NB20
	0140	692	614						F SHOT CTPX-1) START OF LINE NB21

RECORDING LOG

PAGE NO. 89

R/V ConradAND R/V'S 28 Aug 84DFS IV 48 CHANNELSCRUISE 2512AREA Newfoundland BasinFORMAT: SEB3LINE NO NR-21LINE TYPE CMP SOURCE 4 4661A³BPI 1600

JULIAN DATE	TIME GMT	TAPE #	FILE COUNT	DEPTH FM	POP RATE SEC	SAMP. RATE MSEC	REC. LEN. SEC	TRIP DEL. SEC	COMMENTS
									TRIGGER DELAYS 10/11/12/11
241	0142	692	620		20	4	12	Ø	(GUNS #1, 4 offline)
		692	700						4 guns online
	0214	692	715						LSHOT TPX-1
	0214	693	716						FSHOT TPX-2 45/49/37/49/48/49
	0248	693	818						LSHOT
	0248	694	819						FSHOT TPX-1 46/50/50/40/48/48
	0322	694	920						LSHOT
	0322	695	921						FSHOT TPX-2
	0357	695	024						LSHOT
	0359	696	025						FSHOT TPX-2 Lost 10 shots (Load lamp out)
	0405	696	042						Deploy SB #53
	0433	696	127						LSHOT
	0433	697	128						FSHOT TPX-1 46/50/51/42/48/45
	0507	697	229						LSHOT
	0507	698	230						FSHOT TPX-2 46/46/47/35/42/43
	0541	698	332						LSHOT
	0541	699	333						FSHOT TPX-1 46/46/46/35/45/45
	0616	699	434						LSHOT
	0616	700	435						FSHOT TPX-2 43 44 43 36 45 43

RECORDING LOG

PAGE NO. 88

R/V ConradAND R/V'S DFS IV 48 CHANNELSCRUISE 25-10AREA Newfoundland BasinFORMAT: SEGBLINE NO 118-21LINE TYPE CDPSOURCE 4 x 466 in³ airgunsBPI 1600

JULIAN DATE	TIME GMT	TAPE #	FILE COUNT	DEPTH FM	POP RATE SEC	SAMP. RATE MSEC	REC. LEN. SEC	TRIP DEL. SEC	COMMENTS
241									TRIGGER DELAYS 10-13-12-12
28 AUG	0650	700	537		20	4	12	Ø	LSHOT
	0650	700	538						FSHOT TPX-1 43 43 43 32 43 44
	0659	701	566						LSHOT SB # 53
	0724	701	639						LSHOT
	0724	702	640						FSHOT TPX-2 43 47 47 37 46 44
	0758	702	741						LSHOT
	0758	703	742						FSHOT TPX-1 43 46 47 39 45 45
	0831	703	842						LSHOT
	0832	704	843						FSHOT TPX-2 45, 48, 45, 34, 45, 44 (0845 = 886 F/S SB # 54)
	0905	704	843						LSHOT
	0905	705	944						FSHOT TPX-1 43, 49, 51, 40, 50, 47
	0938	705	44						LSHOT
	0939	706	45						FSHOT TPX-2 44 49 49 42 53 48
	1013	706	146						Lshot
	1013	707	147						Fshot (TPX-1)
	1040	707	228						gun # 1 out of the water
	1047	707	248						Lshot
	1047	708	249						F shot (TPX-2) 44, 51, 50, 42, 51, 50
	1048	708	251						gun # 1 back on

RECORDING LOG

PAGE NO. 89.

R/V ConradAND R/V'S —CRUISE 25-10AREA Newfoundland BasinLINE NO NB-21LINE TYPE CDPSOURCE 4 x 466 in³ airgunsDFS IV 48 CHANNELSFORMAT: Seg BBPI 1600

28 Aug. 1984

JULIAN DATE	TIME GMT	TAPE #	FILE COUNT	DEPTH FM	POP RATE SEC	SAMP. RATE MSEC	REC. LEN. SEC	TRIP DEL. SEC	COMMENTS
									trigger delays 10, 13, 12, 12
241	1122	708	352		20	4	12	0	L shot
	1122	709	353						F shot (TPX-1) 46, 50, 50, 43, 52, 48
	1130	709	377						end SB# 54
	1156	709	454						L shot
	1156	710	455						F shot (TPX-2) 46, 50, 50, 40, 51, 49
	1229	710	556						LSHOT (TPX-2)
	1229	711	557	A					FSHOT (TPX-1) 46, 48, 49, 40, 49, 46
	1303	711	658	B					LSHOT (TPX-1)
	1303	712	659						FSHOT (TPX-2) 46, 48, 50, 39, 50, 45
	1338	712	761						LSHOT (TPX-2)
	1338	713	762						FSHOT (TPX-1) 46, 50, 51, 42, 51, 47
	1415	713	864						LSHOT
	1415	714	865						FSHOT TPX-2
	1446	714	966						LSHOT TPX-2
	1446	715	967						FSHOT TPX-1 49/49/50/41/55/50
	1511	715	48						CHG. DELAY ON AIRGUNS 3 & 4 FROM 12 → 11 ms,
	1520	715	68						LSHOT
	1520	716	69						FSHOT TPX-2 49/49/44/35/50/45
	1554	716	172						LSHOT

RECORDING LOG

PAGE NO. 90

R/V. Comad ~~AND R/V~~ 8/28/83
 CRUISE 2510 AREA Newfoundland Basin
 LINE NO. NB-21 LINE TYPE CMP SOURCE 4 466m³

DFS IV 48 CHANNELSFORMAT: SEB BBPI 1600

JULIAN DATE	TIME GMT	TAPE #	FILE COUNT	DEPTH FM	POP RATE SEC	SAMP. RATE MSEC	REC. LEN. SEC	TRIP DEL. SEC	COMMENTS
									TRIGGER DELAYS = 10 12 11 11
241	1554	717	173		20	4	12	Ø	FSHOT TPX-1
28 AUG	1629	717	273						LSHOT
	1629	718	274						FSHOT TPX-2 50-46-46-37-47-42
	1703	718	377						LSHOT
	1703	719	378						FSHOT TPX-1 50-47-47-34-50-43
	1736	719	478						LSHOT
	1736	720	479						FSHOT TPX-2 52-46-46-37-47-43
	1810	720	579						LSHOT
	1810	721	580						FSHOT TPX-1 50-47-48-36-48-43
	1843	721	680						LSHOT (2 SHOT 652 AT 1834 SB #55)
	1844	722	681						FSHOT TPX-2 51-45-43-33-48-43
	1917	722	781						LSHOT
	1917	723	782						FSHOT TPX-1 54-48-48-40-52-45
	1951	723	882						LSHOT
	1951	724	883						FSHOT TPX-2 53-48-50-42-53-48
	2027	724	984						LSHOT Light sensor not lit on TPX-1 for 1st shot (Tape 725) 1 or 2 extra shots recorded on this tape while putting TPX-1 on line) 5 shots = total 1055
	2027	725	987						FSHOT TPX-1 53-48-47-40-55-46
	2055	725	071						Change Trigger Delay 10 12 11 10
	2101	725	090						LSHOT

RECORDING LOG

PAGE NO. 91...R/V CONRADAND R/V'S —DFS IV 48 CHANNELSCRUISE 25-10AREA Newfoundland BasinFORMAT: SEGBLINE NO. NB-21LINE TYPE CDPSOURCE 4x466 in³ airgunsBPI 1600

JULIAN DATE	TIME GMT	TAPE #	FILE COUNT	DEPTH FM	POP RATE SEC	SAMP. RATE MSEC	REC. LEN. SEC	TRIP DEL. SEC	COMMENTS
									TRIGGER DELAYS 10 12 11 10
28 AUG 84 241	2101	726	091		20	4	12	Ø	FSHOT TPX-2 53 50 52 43 53 48
	2135	726	192						LSHOT
	2135	727	193						FSHOT 56 52 52 43 59 47
	2157	727	257						L shot SB # 55
	2210	727	296						gun #4 off L shot
	2210	728	297						F shot (TPX-2) 55, 54, 55, 45, 58, 50
	2218	728	320						gun #4 back up
	2244	728	399						L shot
	2244	729	400						F shot (TPX-1)
	2319	729	502						L shot possible shot last record
	2319	730	503						F shot (TPX-2) 52, 53, 55, 45, 60, 50
	2353	730	606						L shot
	2353	731	607	B					F shot (TPX-1)
29 AUG 242	0027	731	708	C					LSHOT (TPX-1)
	0027	732	709						FSHOT (TPX-2) 54, 55, 56, 52, 64, 55
	0101	732	810						LSHOT (TPX-2)
	0101	733	811						FSHOT (TPX-1) 51, 55, 59, 51, 62, 55
	0128	733	893						START SB # 56
	0135	733	912						LSHOT (TPX-1)

RECORDING LOG

PAGE NO. 92R/V CONRAD

AND R/V'S

8/29/84END 3853CRUISE 25-10AREA NEWFOUNDLAND BASINDFS IV 48 CHANNELSFORMAT: SEGBLINE NO MB-21LINE TYPE CAMPSOURCE 4x466 in³ airgunsBPI 160029 AUG 84

JULIAN DATE	TIME GMT	TAPE #	FILE COUNT	DEPTH FM	POP RATE SEC	SAMP. RATE MSEC	REC. LEN. SEC	TRIP DEL. SEC	COMMENTS
									TRIGGER DELAYS: 10, 12, 11, 10
242	0135	734	913		20	4	12	0	FSHOT(TPX-2) 44, 45, 45, 40, 48, 46
	0209	734	017						LSHOT
	0209	735	018						FSHOT TPX-1 45, 47, 45, 40, 49, 44 Δdelay shot 83 10/12/10/10
	0244	735	119						LSHOT Δdelay shot 92 10/12/10/11
	0244	736	120						FSHOT TPX-2 45, 47, 47, 42, 50, 44
	0318	736	222						LSHOT
	0318	737	223						FSHOT TPX-1 45-47-47-43-49-45
	0352	737	325						LSHOT
	0352	738	326						FSHOT TPX-2 45-47-47-42-50-47
	0427	738	427						LSHOT
	0428	739	428						FSHOT TPX-1 45/47/48/41/50/44 END 3853 SHOT 438
	0446	739	488						ΔTRIGGER 11/12/10/11
	0501	739	531						LSHOT
	0501	740	532						FSHOT TPX-2 45/46/45/41/51/45
	0535	740	634						LSHOT
	0535	741	635						FSHOT TPX-1
	0610	741	737						FSHOT
	0610	742	738						FSHOT TPX-2 46 46 47 42 50 45
	0644	742	840						LSHOT

RECORDING LOG

PAGE NO. 93...

R/V CONRADAND R/V'S DFS IV 48 CHANNELSCRUISE 25-10AREA Newfoundland BasinFORMAT: SEGBLINE NO. NB-21LINE TYPE CDPSOURCE 4 x 466 in³BPI 1600

JULIAN DATE	TIME GMT	TAPE #	FILE COUNT	DEPTH FM	POP RATE SEC	SAMP. RATE MSEC	REC. LEN. SEC	TRIP DEL. SEC	COMMENTS
									TRIGGER DELAYS 11/12/10/11
29 AUG 84 242	0644	743	841		20	4	12	Ø	FSHOT TPX-1 46 46 46 41 49 45
	0718	743	942						LSHOT
	0718	744	943						FSHOT TPX-2 45 47 47 41 50 46
	0752	744	046						LSHOT
	0752	745	047						FSHOT TPX-1 45 47 48 42 50 48
	0826	745	1047						LSHOT
	0826	746	148						FSHOT TPX-2 45 47 48 42 50 46
	0900	746	249						LSHOT
	0900	747	250						FSHOT TPX-1 45 47 47 40 48 45
	0933	747	350						LSHOT
	0934	748	351						FSHOT TPX-2 46 48 50 44 51 46
	1008	748	454						L shot
	1008	749	455						Fshot (TPX-1) 46, 49, 50, 45, 50, 47
	1043	749	557						L shot
	1043	750	558						Fshot (TPX-2)
	1118	750	661						L shot
	1118	751	662						Fshot (TPX-1) 46, 47, 47, 43, 51, 47
	1129	751	692						trigger delays → 11, 13, 11, 12
	1152	751	764						L shot

RECORDING LOG

PAGE NO. 94.

RAV ConradAND R/V'S 29 Aug. 1984CRUISE 25-10AREA Newfoundland BasinLINE NO. NB-2/22 LINE TYPE CDPSOURCE 4 x 466 in³ airgunsDFS IV 48 CHANNELSFORMAT: Seg BBPI 1600

JULIAN DATE	TIME GMT	TAPE #	FILE COUNT	DEPTH FM	POP RATE SEC	SAMP. RATE MSEC	REC. LEN. SEC	TRIP DEL. SEC	COMMENTS
29 Aug, 242	1152	752	764		20	4	12	✓	triggers delays 11, 13, 11, 12 Fshot (TPX-2) 45, 48, 48, 45, 50, 44
	1226	752	866						LSHOT (TPX-2)
	1226	753	867						FSHOT (TPX-1) 46, 49, 48, 41, 53, 50
	1235	753	893						LSHOT (TPX-1) <u>END OF LINE NB-21</u>
	1235	754	894						FSHOT (TPX-2) <u>START OF LINE NB-22</u>
	1237	754	896						<u>INCREMENT → LINE #22</u>
	1237	754							GUNS NOT STABLE ON TURN GUNS 2 + 3 ONLY . . . CHANGE DELAY ON GUN 3 TO 10
	1253	754	949 949						ALL 4 GUNS FIRING, DELAYS 10, 13, 10
	1257	754	959						GUN DELAYS: 10, 12, 10, 11
	1308	754	994						LSHOT (TPX-2)
	1308	755	995						FSHOT (TPX-1) 49, 50, 45, 48, 61, 71
	1342	755	097						LSHOT (TPX-1)
	1342	756	098						FSHOT (TPX-2) 48, 49, 48, 53, 67, 59
	1417	756	200						LSHOT
	1417	757	201						FSHOT TPX-1 45/47/48/50/56/50
	1451	757	302						LSHOT
	1451	758	303						FSHOT, TPX-2 46/46/46/45/50/45
	1525	758	404						LSHOT

RECORDING LOG

PAGE NO. 95

R/V CuradAND R/V'S 8-29-84

NR-22

CRUISE ZS10AREA Newfoundland BasinDFS IV 48 DATA CHANNELSFORMAT: SEC 3 MPXLINE NO. NR-22LINE TYPE CMPSOURCE 4 466 cum airBPT. 1600

JULIAN DATE	TIME GMT	TAPE #	FILE COUNT	DEPTH FM	POP RATE SEC	SAMP. RATE MSEC	REC. LEN. SEC	TRIP DEL. SEC	COMMENTS
									TRIGGER 10/12/10/11
242	1525	759	405			4	12		FSHOT TPX-1 46/46/45/45/51/44
	1559	759	507						LSHOT
	1559	760	508						FSHOT TPX-2 46/46/46/45/50/46
	1634	760	611						LSHOT
	1634	761	612						FSHOT TPX-1 47/47/44/44/50/45
	1654	761	711						SHIP SLOWED TO AVOID APPROACHING VESSEL - streamer drops slightly
	1709	761	711						LSHOT 1702 - C/S 100 RPM - vessel passed bow.
	1709	762	715						FSHOT TPX-2 47-47-46-45-50-51
	1743	762	818						LSHOT TPX-2
	1743	763	818						TPX-1 - TAPER FAEL - LOST 4 SHOTS
	1744	763	819						FIRST SHOT TPX-1 46/47/47/43/50/47
	1818	763	919						LSHOT
	1818	764	920						FSHOT TPX-2 45-46-45-44-51-47
	1851	764	20						LSHOT
	1851	765	-						TPX1 - CRASH
	1855	765	21						TPX2 - FSHOT ID INCORRECT FIRST FEW SHOTS
									LOST 11 SHOTS
	1929	765	122						TPX LSHOT TPX-2
	1929	766	123						FSHOT TPX-1 45/48/49/44/50/48

RECORDING LOG

PAGE NO. 96R/V CONRADAND R/V S. 29 AUG 84CRUISE 25/10AREA NEWFOUNDLAND BASINLINE NO NB-22/23LINE TYPE CMDSOURCE 4*466 in³ AIR GUNSDFS IV 48 CHANNELSFORMAT: SRGB HUXBPI 1600

JULIAN DATE	TIME GMT	TAPE #	FILE COUNT	DEPTH FM	POP RATE SEC	SAMP. RATE MSEC	REC. LEN. SEC	TRIP DEL. SEC	COMMENTS TRIGGER DELAY 10-12-10-11
242	2002	766	223		20	4	12	Ø	L SHOT TPX-1
	2002	767	224						F SHOT TPX-2
	2034	767	318						SONOBWOY # 57 FSHOT
	2037	767	326						LSHOT
	2037	768	327						FSHOT TPX-1 45 47 46 43 51 50
	2111	768	428						LSHOT
	2111	769	429						FSHOT TPX-2 47 49 47 45 52 50
	2142	769	531						LSHOT
	2142	770	532	522					FSHOT TPX-1 47 49 47 49 52 50
	2219	770	633	549					Lshot
	2219	771	634						Fshot (TPX-2) 47, 48, 45, 43, 51, 50
	2254	771	736						L shot
	2254	772	737						F shot (TPX-1) 47, 49, 47, 45, 52, 47
	2257	772	749						end SB # 57
	2328	772	838						Lshot
	2328	773	839						F Shot (TPX-2) 45, 49, 47, 45, 52, 49
³⁰ NB-23	2400	773	935						end NB-22 LSHOT
✓	2400	774	936						begin NB-23 ← FSHOT 47, 49, 47, 45, 52, 48
	0034	774	38						LSHOT (TPX-1)

RECORDING LOG

PAGE NO. 97...RV ConradAND R/V'S 30 August 1984CRUISE 25-10AREA Newfoundland BasinLINE NO. NB-23LINE TYPE CDPSOURCE 4 x 466 in³ airgunsDFS IV 48 CHANNELSFORMAT: SEGBBPI 1600

JULIAN DATE	TIME GMT	TAPE #	FILE COUNT	DEPTH FM	POP RATE SEC	SAMP. RATE MSEC	REC. LEN. SEC	TRIP DEL. SEC	COMMENTS
									TRIGGER DELAY: 10, 12, 10, 11
243 30 Aug	0034	775	39		20	4	12	0	FSHOT (TPX-2) 44, 49, 48, 47, 53, 54
	0108	775	140						LSHOT (TPX-2)
	0108	776	141						FSHOT (TPX-1) 44, 48, 47, 45, 52, 49
	0139 0140	776	235						GLY #1 - 11 sec delay
	0141	776	240						LSHOT (TPX-1)
	0141	777	241						FSHOT (TPX-2) 43, 46, 47, 44, 50, 48
	0215	777	343						FSHOT SB #58
	0216	777	344						LSHOT
	0216	778	345						FSHOT TPX-1
	0250	778	447						LSHOT
	0250	779	448						FSHOT TPX-2 43-50-49-45-50-50
	0324	779	550						LSHOT
	0324	780	551						FSHOT TPX-1 44-47-48-44-50-46
	0358	780	652						LSHOT
	0358	781	653						FSHOT TPX-2 44-45-45-41-50-46
	0432	781	755						LSHOT
	0433	782	756						FSHOT TPX-1 44/45/46/41/51/46
	0507	782	857						LSHOT
			858						

RECORDING LOG

PAGE NO. 98R/V Caird~~AND R/V~~8/30/84NB-23DFS IV 48 CHANNELSCRUISE 2510AREA Newfoundland BasinFORMAT: REL TLINE NO NB-23LINE TYPE CMPSOURCE 4466m³J day = 243 END 3853BPI 160 hpi

JULIAN DATE	TIME GMT	TAPE #	FILE COUNT	DEPTH FM	POP RATE SEC	SAMP. RATE MSEC	REC. LEN. SEC	TRIP DEL. SEC	COMMENTS
									TRIGGER 13/11/10/12 msec
243	0507	783	858		20	4	12	Ø	FSHOT TPX-2 44/46/47/41/48/46 Δ12/11/10/11 shot? ~880
	0515	783	861						LSHOT SB#53/881 (shot)
	0542	784	862						FSHOT TPX-1 44/46/47/41/46/49
	06127	784	065						LSHOT
	0618	785	067						(?) METAL STRIP NOT ADVANCED PAST LOAD LIGHT; FSHOT TPX-2 TAPE REWOUND = 3 shots lost 44 47 48 42 50 45
	06443	785	131?						AN EOF WAS NOT DETECTED SOMEWHERE - 6 shots lost
	0644	786	137						LSHOT
	0717	786	238						FSHOT TPX-1 44 49 49 42 52 52
	0717	787	239						LSHOT
	0752	787	341						FSHOT TPX-2 44 47 46 40 50 49
	0752	788	342						LSHOT
	0825	788	442						FSHOT TPX-1 43 46 46 38 50 48
	0825	789	443						LSHOT (0815Z SB#59 F/S = 410)
	0859	789	543						FSHOT TPX-2 44 43 42 32 47 47
	0859	790	544						LSHOT
	0932	790	644						FSHOT TPX-1 47 42 43 36 43 41
	0933	791	645						LSHOT
	1007	791	746						FSHOT TPX-2 49 45 42 28 42 38
	1007	792	747						Lshot
									FSHOT (TPX-1) 50, 45, 47, 35, 50, 40

RECORDING LOG

PAGE NO. **99**R/V ConradAND R/V'S 30 August 1984CRUISE 25-10AREA Newfoundland BasinLINE NO NB-23LINE TYPE CDPSOURCE 4x 466 in³ airgunsDFS IV 48 CHANNELSFORMAT: seg BBPI 1600

JULIAN DATE	TIME GMT	TAPE #	FILE COUNT	DEPTH FM	POP RATE SEC	SAMP. RATE MSEC	REC. LEN. SEC	TRIP DEL. SEC	COMMENTS
									trigger delays 11, 11, 10, 10
243	1041	792	849		20	4	12	Ø	L shot
	1041	793	850						F shot (TPX-2)
	1116	793	952						L shot
	1115		950						end SB #59
*	1116	794	953						F shot (TPX-1)
	1150	794	056						L shot
	1150	795	057						F shot (TPX-2) 47, 45, 43, 32, 46, 42
*		794	959						change trigger delays → 14, 13, 11, 13
	1224	795	159						LSHOT (TPX-2)
	1224	796	160						FSHOT (TPX-1) 50, 46, 47, 35, 51, 44
	1258	796	261						LSHOT (TPX-1)
	1258	797	262						FSHOT (TPX-2) 50, 46, 47, 43, 54, 43
	1332	797	363						LSHOT (TPX-2)
	1332	798	364						FSHOT (TPX-1) 45, 42, 40, 37, 44, 37
	1406	798	466						LSHOT
	1406	799	467						FSHOT TPX-2 50/50/48/40/52/46
	1436	799	557						Δ TRIGGER 12/13/11/13
	1440	799	567						LSHOT

RECORDING LOG

PAGE NO. 100 99R/V CONRAD

AND R/V'S _____

CRUISE 25-10AREA NEWFOUNDLAND BASINLINE NO. NB-23LINE TYPE CDPSOURCE 4X466in³ AIRGUNSDFS IV 48 CHANNELSFORMAT: SEGBBPT 1600

30 AUG 84

JULIAN DATE	TIME GMT	TAPE #	FILE COUNT	DEPTH FM	POP RATE SEC	SAMP. RATE MSEC	REC. LEN. SEC	TRIP DEL. SEC	COMMENTS
									TRIGGER DELAYS: 12/13/11/13
243	1440	800	568		20	4	12	CP	FSHOT TPX-1 47/45/45/36/50/45/ NO DRIVE ERRORS
	1514	800	669						LSHOT
	1514	801	670						ΔTRIGGER SHOT 625 12/13/11/12
	1548	801	772						FSHOT TPX-2 50/46/42/36/49/44
	1548	801	772						LSHOT
	1548	802	773						FSHOT TPX-1 50/45/45/36/54/45
	1600	802							XBT #47
	1622	802	874						LSHOT
	1622	803	875						FSHOT TPX-2 52/50/49/39/53/47
	1629	803	845						Start SB #60
	1651	803	977						LSHOT
	1651	804	978						FSHOT TPX-1 47/50/51/40/52/43
		804	996						Changed delays Guns #1 & 4 13-13-11-13
	1731	804	080						LSHOT
	1731	805	081						FSHOT X-2 49/47/49/47/44/47
	1804	805	181						LSHOT
	1804	806	182						FSHOT X-1 48/46/51/40/53/46
	1838	806	284						LSHOT
	1838	807	285						FSHOT X-2
	1913	807	385						LSHOT - (incremented early to tape 808 on 4/5=385)

RECORDING LOG

PAGE NO. 101

R/V Conrad
CRUISE 25-10
LINE NO NB-23

AND R/V'S _____

Aug 30, 1984

DFS IV 48 CHANNELS

AREA A Lowland Basin

FORMAT: SECB

LINE NO. 11573

LINE TYPE DP

SOURCE 4 x 466^{in 3} airguns

BFI 1600

[illegible]

RECORDING LOG

PAGE NO. 102

R/V CONRAD

AND R/V'S _____

-31
30 AUG 84CRUISE 25-10AREA NEWFOUNDLAND BASINDFS IV 48 CHANNELSLINE NO NB-24LINE TYPE CDPSOURCE 4x466in³ air gunsFORMAT: SEG BBPI 1600

JULIAN DATE	TIME GMT	TAPE #	FILE COUNT	DEPTH FM	POP RATE SEC	SAMP. RATE MSEC	REC. LEN. SEC	TRIP DEL. SEC	COMMENTS
243	2002	810	528		20	4	12	0	F SHOT BEGIN NB-24 45, 42, 33, 30, 43, 39
243	2007	810	544						GUN #1 off [firing on 3 guns]
	2015	810	567						GUN #1 ON; GUN #2 OFF
	2036	810	630						LSHOT
	2036	811	631						FSHOT TPX-2 43 41 42 40 49 40
	2110	811	733						LSHOT
	2110	812	734						FSHOT TPX-1 43 42 41 37 47 39
	2145	812	836						LSHOT
	2145	813	837						FSHOT TPX-2 45 40 40 37 47 37
	2218	813	936						sync → many parity errors
	2219	813	939						L shot
	2219	814	940						F shot (TPX-1) 44, 41, 40, 38, 48, 40
	2230	814	974						4 guns firing; delays 13, 13, 11, 13
	2253	814	042						L shot
	2253	815	043						F shot (TPX-2)
	2327	815	144						L shot
	2327	816	145						F shot (TPX-1) 46, 41, 42, 38, 52, 42
244	0002	816	247						L shot
244	0002	817	248						F shot (TPX-2) 47, 42, 45, 41, 37, 47

DFS IV CHANNELS 48
 FORMAT: SEGB
 BP1600

R/V Conrad
 AND RV'S 31 August 1984
 AREA Newfoundland Basin
 LINE NO. NB-24/25
 LINE TYPE CDP
 SOURCE 4 x 46 in 3 airguns
 31 AUG 84

JULIAN DATE	TIME GMT	TAPE #	FILE COUNT	DEPTH FM	POP RATE SEC	SAMP RATE MSEC	REC. LEN. SEC	TRIP DEL. SEC	COMMENTS
244	0030	817	331		20	4	12	0	TRIGGER DELAYS: 13, 13, 11, 13
	0030	818	332						LSHOT (TPX-2)
	0030	818	337						FSHOT (TPX-1) 43, 44, 45, 39, 46, 40
	0031	818	337						AIRGUNS 1 & 4 OFF FOR COMPRESSOR MAINT.
	0053	818	404						ALL GUNS ON
	0103	818	433						LSHOT (TPX-1)
	0103	819	434						FSHOT (TPX-2) 43, 43, 45, 42, 52, 45
	0137	819	535						LSHOT (TPX-2)
	0137	820	536						FSHOT (TPX-1) 43, 47, 50, 44, 52, 45
	0211	820	627						LSHOT (TPX-1)
	0212	821	638						FSHOT (TPX-2) (OK) 4057 43, 47, 48, 41, 50, 46
	0225	821	676						LAUNCH SB #61(A)
	0229	821	690						End of SB #61(A) - probably caught on cel.
	0245	821	738						LAUNCH SB #61
	0246	821	740						LSHOT (TPX-2)
	0247	822	741						FSHOT (TPX-1) 43, 46, 49, 45, 53, 47
	0302	822	787						Trigger delays = 13, 11, 10, 12
	0320	822	842						LSHOT (TPX-1)
	0321	823	843						FSHOT (TPX-2) 43, 46, 49, 46, 53, 45
	0345		915						Parity and sync errors.

RECORDING LOG

PAGE NO. 104

DFS IV 48 CHANNELS

FORMAT: SEGB

BPI 1600

R/V CONRAD

CRUISE 25-10

LINE NO N8-25

AND R/V S 31 August, 1984 / JD. 244

AREA Newfoundland Basin

LINE TYPE CDP/MCS SOURCE 4X466 in³/air

JULIAN DATE	TIME GMT	TAPE #	FILE COUNT	DEPTH FM	POP RATE SEC	SNAP RATE MSEC	REC. LEN. SEC	TRIP DEL. SEC	COMMENTS
044	0355	823	945		20	4	12	φ	Trigger Delays = 13, 11, 10, 12
	0356	824	946						LSHOT (TRX-2)
	0429	824	048						FSHOT (TRX-1) 44, 46, 50, 46, 54, 46
	0429	825	049						LSHOT (TRX-1)
	0429	825	049						FSHOT (TRX-2) 45, 47, 50, 48, 53, 44
	0503	825	151						LSHOT
	0503	826	152						FSHOT (TRX-1) 42, 46, 49, 45, 52, 46
	0530	826	233						Last shot, SB# 61
	0534	826	244						Logger crash = no digital data LSHOT (TRX-1)
	0541-0542	-245-248							245-248 changing slot interval (bad slots?) Refer to log
	0543	827	249						FSHOT (TRX-2) 43, 48, 49, 47, 53, 46 (Trigger delays same as above)
	0618	827	351						LSHOT (TRX-2)
	0618	828	352						FSHOT (TRX-1) 43, 47, 47, 46, 52, 45
	0652	828	452						LSHOT
	0652	829	453						FSHOT (TRX-2) 43, 47, 49, 48, 54, 44
	0726	829	556						LSHOT
	0726	830	557						FSHOT (TRX-1) 43, 48, 47, 46, 49, 44
	0730	830	570						Begin SB# 62A
	0735	830	585						End SB# 62A - probably caught in streamer
	0744	830	601						Begin SB# 62 (again)

DFS IV 48 CHANNELS
 FORMAT: SEC 8
 BPI 1600

31 August, 1984 / J.D. 244
 AREA Newfoundland Basin
 CDP/MCS Air/4x46 in's
 SOURCE

R/V CONRAD
 CRUISE 25-10
 LINE NO NB-25

JULIAN DATE	TIME GMT	TAPE #	FILE COUNT	DEPTH FM	POP RATE SEC	SAMP RATE MSEC	REC. LEN. SEC	TRIP DEL. SEC	COMMENTS
244	0800	830	658		20	4	12	φ	Triggers - Delays: 110, 11, 10, 12 (SB#62 under way)
	0800	831	659						ESTHOT (TRX-2) 43, 49, 48, 46, 53, 47 LSHOT (TRX-1)
	~0820	831	~0718						NB: New recording SB#62 on aux 1 + 4 (610 dB higher gain)
	0834	831	761						LSHOT (TRX-2) ESTHOT (TRX-1) 43, 48, 47, 45, 50, 43 LSHOT (TRX-3)
	0908	832	863						ESTHOT (TRX-2) 43, 46, 46, 43, 49, 43 LSHOT
	0942	833	968						LSHOT (TRX-1) ESTHOT (TRX-2) 44, 45, 45, 43, 49, 40
	1015	834	049						LSHOT (TRX-1) ESTHOT (TRX-2) 1017 834 068
	1017	835	070						LSHOT (TRX-2) (lost 069)
	1052	835	173						LSHOT
	1052	836	174						ESTHOT (TRX-1) 42, 45, 50, 43, 46, 54 LSHOT
	1126	836	275						ESTHOT (TRX-2) LSHOT
	1126	837	276						ESTHOT (TRX-2) LSHOT
	278								offset - delays 12, 11, 10, 11

RECORDING LOG

PAGE NO. 106R/V ConradAND R/V'S 31 August 1984CRUISE 25-10AREA Newfoundland BasinLINE NO NB-25/26LINE TYPE CDPSOURCE 4 x 466 in³ airguns

START SB#63

TAPE 840

DFS IV 48 CHANNELSFORMAT: SEGBBPI 1600

JULIAN DATE	TIME GMT	TAPE #	FILE COUNT	DEPTH FM	POP RATE SEC	SAMP. RATE MSEC	REC. LEN. SEC	TRIP DEL. SEC	COMMENTS
244	1155	837	~354						trigger delays 12,11,10,11 L shot END NB-25
									(BAD TAPE?) 12 shots lost on line change
	1159	838	366						F shot (TPX-2) Begin NB-26
	1232	838	467						L SHOT (TPX-2)
	1232	839	468						F SHOT (TPX-1) 42, 43, 44, 40, 47, 42
	1306	839	570						L SHOT (TPX-1)
	1306	840	571						F SHOT (TPX-2) 43, 43, 44, 40, 47, 40 (FIRST FILE MISLABELED 830)
	1315	840	596						START SB#63
	1340	840	673						L SHOT (TPX-2)
	1340	841	674						F SHOT (TPX-1) 43, 42, 43, 41, 47, 41
	1415	841	775						L SHOT
	1415	842	776						F SHOT TPX-2 45/42/44/44/46/44
	1449	842	878						L SHOT
	1449	843	879						F SHOT TPX-1 41/44/44/43/50/41
	1523	843	980						L SHOT
	1523	844	981						F SHOT TPX-2 40/44/43/41/41/41
	1557	844	84						
	1557	845	85						F SHOT TPX-1 41/42/41/40/45/40
	1631	845	186						END SB #63 @ 1630

RECORDING LOG

PAGE NO. 107

R/V CuradAND ~~RAVES~~ 8/31/84

NB-26

DFS IV 48 CHANNELSCRUISE 2510AREA Northumberland Pass

SB 64

FORMAT: SEB BLINE NO 26LINE TYPE CMP STRIKE SOURCE 4 466 in³ airBPI 1600

JULIAN DATE	TIME GMT	TAPE #	FILE COUNT	DEPTH FM	POP RATE SEC	SAMP. RATE MSEC	REC. LEN. SEC	TRIP DEL. SEC	COMMENTS
									TRIGGER: 12/11/10/11
	1631	846	187						FSHOT TPX-2 42/41/41/39/46/40
	1703	846	280						FSHOT SB #64
	1706	846	290						LSHOT
	1706	847	291						FSHOT TPX-1 44/44/42/39/45/41
	1719	847	329						ΔTRIGGER 12/11/10/12
	1740	847	392						LSHOT
	1740	848	393						FSHOT TPX-2 43/42/42/39/45/39
	1814	848	493						LSHOT
	1814	849	494						FSHOT TPX-1 43/41/42/38/45/40
	1847	849	594						LSHOT
	1847	850	595						FSHOT TPX-2 43/41/41/38/45/40
	1921	850	695						LSHOT
	1921	851	696						FSHOT TPX-1 43/40/40/37/46/38
	1932	851	728						LAST SHOT FOR SB #64
	1955	851	797						LSHOT
	1955	852	798						FSHOT TPX-2 43/42/42/36/47/39
	2029	852	899						LSHOT
	2029	853	900						FSHOT TPX-1 42 42 42 40 46 40
	2053		971						AIRGUN #1 OFF

RECORDING LOG

PAGE NO. 108.

R/V CONRAD

AND R/V'S _____

31 Aug/1 Sept 1984

DFS IV 48 CHANNELSCRUISE 25-10AREA Newfoundland BasinFORMAT: SEGBLINE NO. 26LINE TYPE CDPSOURCE 4x466 in³ air gunsBPT 1600

JULIAN DATE	TIME GMT	TAPE #	FILE COUNT	DEPTH FM	POP RATE SEC	SAMP. RATE MSEC	REC. LEN. SEC	TRIP DEL. SEC	COMMENTS
31 AUG 84 244	2059	853	989		20	4	12	0	trigger delays 12,11,10,12 AIRGUN #1 ON - AIRGUN #3 OFF
	2103 20	853	002						LSHOT
	2103	854	003						FSHOT TPX-2 43 43 42 39 46 40
	2108	854	018						AIRGUN #4 OFF; 1,23 ON
	2133	854	093						ALL 4 GUNS ON
	2137	854	104						LSHOT
	2137	855	105						FSHOT TPX-1 43 42 42 38 41 41
	2211	855	206						L shot
	2211	856	207						F shot (TPX-2) 45,44,44,40,47,40
	2221	856	238						SB# 65 deployed
	2246	856	310						L shot lost part of L shot
	2246	857	311						F shot (TPX-1) 44,43,43,40,47,41
	2320	857	412						L shot
	2320	858	413						F shot (TPX-2) 45,44,45,42,47,44
	2355	858	516						L shot
	2355	859	517						F shot (TPX-1) 45,46,45,41,47,45
1 SEPT 245	0029	859	619						LSHOT (TPX-1)
	0029	860	620						FSHOT (TPX-2) 48,45,44,40,50,44
	0103	860	721						LSHOT (TPX-2)

RECORDING LOG

PAGE NO. 109

R/V ConradAND R/V'S 1 Sept. 1984CRUISE 25-10AREA Newfoundland BasinLINE NO NB-26LINE TYPE CDPSOURCE 4 x 466 in³ airgunsDFS IV 48 CHANNELSFORMAT: SEG BBPI 1600

JULIAN DATE	TIME GMT	TAPE #	FILE COUNT	DEPTH FM	POP RATE SEC	SAMP. RATE MSEC	REC. LEN. SEC	TRIP DEL. SEC	COMMENTS
									TRIGGER DELAYS: 12, 11, 10, 12
245	0103	861	722		20	4	12	Ø	FSHOT (TPX-1) 43, 44, 45, 42, 47, 42
	0115	861	759						FSHOT LAST SHOT OF SB #65
	0119	861	770						GUNS #1 + #4 OFF FOR PRESSURE CHECK
	0123	861	782						ALL 4 GUNS FIRING
	0136	861	820						TRIGGER 12 → 11 US GUN DELAY CHANGE
	0137	861	823						LSHOT (TPX-1)
	0137	862	824						FSHOT (TPX-2) 44, 45, 45, 40, 48, 42
	0211	862	926						LSHOT
	0211	863	927						FSHOT (TPX-1) 47 45-44-42-42-41
	0245	863	029						LSHOT
	0245	864	030						FSHOT TPX-2 45-44-44-39-44-42
	0320	864	133						LSHOT
	0320	865	134						FSHOT TPX-1 45-44-45-42-50-45
	0353	865	234						LSHOT
	0353	866	235						FSHOT TPX-2 45-45-39-42-45-42
	0427	866	335						LSHOT
	0427	867	336						FSHOT TPX-1 44/45/45/42/48/44
	0501	867	437						
	2		438						

RECORDING LOG

PAGE NO. 110R/V DavidAND R/V'S 9/1/84

NA-26

DFS IV 48 CHANNELSCRUISE 2510AREA Newfoundland Basin

CESAR is coming

FORMAT: SEAB MAXLINE NO. 26LINE TYPE CMP Strike SOURCE 4 466123BPT 1600

JULIAN DATE	TIME GMT	TAPE #	FILE COUNT	DEPTH FM	POP RATE SEC	SAMP. RATE MSEC	REC. LEN. SEC	TRIP DEL. SEC	COMMENTS
									<u>delays</u>
<u>245</u>	<u>0501</u>	<u>868</u>	<u>438</u>						FSHOT TPX-2 <u>11/11/10/12 45/46/40/49/46/49</u>
	<u>0536</u>	<u>868</u>	<u>541</u>						LSHOT
	<u>0536</u>	<u>869</u>	<u>542</u>						FSHOT TPX-1 <u>46/49/45/45/50/45</u>
	<u>0610</u>	<u>869</u>	<u>644</u>						LSHOT
	<u>0610</u>	<u>870</u>	<u>645</u>						FSHOT TPX-2 <u>43 48 46 46 48 45</u>
	<u>0645</u>	<u>870</u>	<u>747</u>						# LSHOT
	<u>0645</u>	<u>871</u>	<u>748</u>						FSHOT TPX-1 <u>43 46 44 43 49 44</u>
	<u>0718</u>	<u>871</u>	<u>849</u>						LSHOT
	<u>0718</u>	<u>872</u>	<u>850</u>						FSHOT TPX-2 <u>43 46 46 45 49 45</u>
	<u>0753</u>	<u>872</u>	<u>953</u>						LSHOT
	<u>0753</u>	<u>873</u>	<u>954</u>						FSHOT TPX-1 <u>42 45 44 43 48 42</u>
	<u>0815</u>	<u>873</u>	<u>020</u>						SONOBUOY #66
	<u>0826</u>	<u>873</u>	<u>54</u>						LSHOT
	<u>0826</u>	<u>874</u>	<u>55</u>						FSHOT TPX-2 <u>44 45 44 44 48 44</u>
	<u>0900</u>	<u>874</u>	<u>155</u>						LSHOT
	<u>0900</u>	<u>875</u>	<u>156</u>						FSHOT TPX-1 <u>43 45 44 43 48 44</u>
	<u>0933</u>	<u>875</u>	<u>256</u>						LSHOT
	<u>0934</u>	<u>876</u>	<u>257</u>						FSHOT TPX-2 <u>42 45 44 44 50 43</u>
	<u>1008</u>	<u>876</u>	<u>359</u>						LSHOT

RECORDING LOG

PAGE NO. 11....R/V ConradAND R/V'S 1 Sept. 1984CRUISE 25-10AREA Newfoundland BasinLINE NO NB-26LINE TYPE CDPSOURCE 4 x 466 in 3DFS IV 48 CHANNELSFORMAT: Seg BBPT 1600

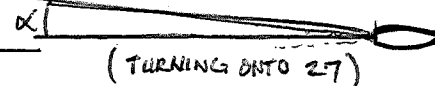
JULIAN DATE	TIME GMT	TAPE #	FILE COUNT	DEPTH FM	POP RATE SEC	SAMP. RATE MSEC	REC. LEN. SEC	TRIP DEL. SEC	COMMENTS
245	1008	877	360		20	4	12	Ø	trigger delay 11, 11, 10, 11 Fshot (TPX-2) 42, 41, 40, 40, 44, 48, 43 Lshot
	1042	877	462						
	1042	878	463						Fshot (TPX-2)
	1115	878	560						end SB# 66 ←
	1117	878	565						Lshot
	1117	879	566						Fshot (TPX-2) 42, 45, 45, 45, 46, 44
	1144	879	649						SB# 67 deployed
	1151	879	667						Lshot
	1151	880	668						Fshot (TPX-2)
	1224	880	768						LSHOT (TPX-2)
	1234	881	769						FSHOT (TPX-1) 42, 47, 44, 44, 49, 43
	1258	881	870						LSHOT (TPX-1)
	1258	882	871						FSHOT (TPX-2) 42, 44, 44, 44, 49, 44
	1329	882	960						DELAY ON GUN #4 → 12
	1332	882	972						LSHOT (TPX-2)
	1332	883	973						FSHOT (TPX-1) 42, 45, 45, 44, 48, 43
	1406	883	72						LSHOT
	1406	884	73						FSHOT TPX-2 42/44/45/40/50/43
	1430	884	150						LSHOT SB# 67 SHOT 150

RECORDING LOG

PAGE NO. 112

RV CowdAND RV S September 1, 1984

NB-26 / NB-27

DFS IV 48 CHANNELSCRUISE 2510AREA Northwest Atlantic $\alpha = 25^\circ @ 1559Z$ FORMAT: SEG BLINE NO NB-26/27LINE TYPE CAMP STRIKESOURCE 4/66 in³


(TURNING ONTO 27)

BPI 1600

JULIAN DATE	TIME GMT	TAPE #	FILE COUNT	DEPTH FM	POP RATE SEC	SAMP. RATE MSEC	REC. LEN. SEC	TRIP DEL. SEC	COMMENTS
									TRIGGER 11/11/10/12
	1439	884	174						LSHOT
	1439	885	175						FSHOT TPX-1 39/39/45/45/46/45
	1513	885	276						LSHOT
	1513	886	277						FSHOT TPX-2 40/44/46/44/47/41
	1538	886	350						LSHOT NB-26 SHOT 350 39/45/45/45/47/42
	1538	887	351						FSHOT NB-27 #1 gun down for ~ 2 hrs for compressor
	1612	887	453						LSHOT work.
	1612	888	454						FSHOT TPX-2 46/47/51/46/53/46 1617 Steamer 3°
	1630	888	509						GUN #1 ON; GUN #4 OFF off ϕ . Should remain @ this azimuth on this course.
	1647	888	557						LSHOT
	1647	889	558						FSHOT TPX-2 1 44/44/46/52/45/46
	1700	889	597						GUN #1 OFF; GUN #4 ON; Decrease delay gun #4 (12 \rightarrow 11 ms)
	1721	889	660						LSHOT
	1721	890	661						FSHOT TPX-2 44-46-49-43-43-49
	1735	890	661						LSHOT AIRGUN #1 ON; AIRGUN #4 OFF
	1755	890	761						LSHOT TPX 4 SHOT
	1757	891	762						FSHOT TPX-2 TPX-1 - FLAKED OUT - 4 SHOTS MISSED AS WE CHANGED DRIVES
	1831	891	862						LSHOT
	1831	892	863						FSHOT TPX-1 45, 45, 47, 42, 53, 48

RECORDING LOG

PAGE NO. 113R/V ConradAND R/V'S Sept 1, 1984DFS IV 48 CHANNELSCRUISE 25-10AREA Newfoundland BasinFORMAT: SEG BLINE NO. 10-27LINE TYPE CDPSOURCE 4 x 4 66 in³ airgunsBPI 1600

JULIAN DATE	TIME GMT	TAPE #	FILE COUNT	DEPTH FM	POP RATE SEC	SAMP. RATE MSEC	REC. LEN. SEC	TRIP DEL. SEC	COMMENTS
									TRIGGER "11/10/12" → "111112"
245	1904	892	963						L SHOT
	1905	893	964						F SHOT TPX-2 43, 45, 48, 44, 56, 48
	1939	893	69						L SHOT
	1939	894	68						F SHOT TPX-1 44/46/50/43/54/46
	2013	894	169						L SHOT
	2013	895	170						F SHOT TPX-2 43 45 50 45 53 48
	2047	895	272						L SHOT
	2047	896	273						F SHOT TPX-1 42 44 48 43 55 48
	2050	"	281						C/ DELAY AIRGUN #3 10 → 11 msec TRIGGER DELAYS "111112"
	2122	896	375						L SHOT
	2122	897	376						F SHOT TPX-2 41 46 50 45 47 49
	2150	897	447						CHANGE DELAY AIRGUN #4 FROM 11 → 13 ms.
	2156	897	478						L shot
	2156	898	479						F shot (TPX-1) 42, 47, 51, 45, 55, 50 SHOT SYNC + PARITY ERRORS ON FIRST
	2230	898	580						L shot
	2230	899	581						F shot (TPX-2) 43, 57, 51, 45, 55, 49
	2305	899	684						L shot
	2305	900	685						F shot (TPX-1) 43, 46, 51, 45, 55, 59
	2339	900	786						L shot

RECORDING LOG

PAGE NO. 114

R/V ConradAND R/V'S 1/2 Sept. 1984CRUISE 25-10AREA Newfoundland BasinLINE NO NB-27LINE TYPE CDPSOURCE 4 x 466 in³ airDFS IV 48 CHANNELSFORMAT: seg BBPI 1600

JULIAN DATE	TIME GMT	TAPE #	FILE COUNT	DEPTH FM	POP RATE SEC	SAMP. RATE MSEC	REC. LEN. SEC	TRIP DEL. SEC	COMMENTS ^{delays} 11, 11, 11, 13
245	2339	901	787		20	4	12	0	F shot (TPX-2) 40, 46, 55, 50, 57, 51
246	0013	901	889						L SHOT
246	0013	902	890						F SHOT (TPX-1) 42, 41, 50, 48, 58, 55
	0047	902	992						L SHOT (TPX-1)
	0047	903	993						F SHOT (TPX-2) 43, 40, 50, 44, 57, 50
	0122	903	96						L SHOT (TPX-2)
	0122	904	97						F SHOT (TPX-1) 41, 40, 50, 45, 57, 48
	0156	904	198						L SHOT
	0156	905	199						F SHOT (TPX-2) 43-43-52-44-56-48
	0230	905	302						L SHOT - DID NOT RECORD ENTIRE LAST SHOT / PARITY ERR.
	0230	906	303						F SHOT TPX-1 48-44-49-46-59-49
	0305	906	405						L SHOT
	0305	907	406						F SHOT TPX-2
	0339	907	508						L SHOT
	0339	908	509						F SHOT TPX-1 45-44-49-45-57-45
	0413	908	610						L SHOT
	0413	909	611						F SHOT TPX-2 46/45/52/44/58/49/
	0447	909	713						

RECORDING LOG

PAGE NO.

R/V Coward

AND R/V'S

9/2/84CRUISE 2510

AREA

Newfoundland BasinLINE NO 27/28

LINE TYPE

LMPSOURCE 4466 in 3TE ERL 796, 797, 798DFS IV 48 CHANNELSFORMAT: SEABBPI 1600

JULIAN DATE	TIME GMT	TAPE #	FILE COUNT	DEPTH FM	POP RATE SEC	SAMP. RATE MSEC	REC. LEN. SEC	TRIP DEL. SEC	COMMENTS
									TRIGGER 11/11/11/13 → 11-11-11-11
246	0447	910	714		20	4	12	0	FSHOT TPX-1 46/42/51/44/56/50
	0516	910	798	SHORT REEL					LSHOT SYNC ER (PHASE ENCODE) 796, 797, 798
	0516	911	799						FSHOT TPX-2
	0530	911	840						LSHOT NB-27 TPX-2

	0530	912	841						FSHOT NB-28 TPX-1 44/43/50/44/58/51
	0604	912	943						LSHOT SKT 948 ATTACHED 11/11/12/12
	0604	913	944						FSHOT TPX-2 47 39 52 48 60 54
	0649	913	048						LSHOT
	0649	914	049						FSHOT TPX-1 47, 45, 53, 47, 57, 53
	0713	914	151						LSHOT
	0713	915	152						FSHOT TPX-2 47, 41, 51, 46, 60, 55
	0737 0747	915 915	254						4/ delay Gun #4 13 → 11
	0747	915	254						LSHOT
	0747	916	255						FSHOT TPX-1 47 42 49 44 59 54
	0821	916	355						LSHOT
	0821	917	356						FSHOT TPX-2 50, 45, 48, 43, 57, 50
	0854	917	456						LSHOT
	0855	918	457						FSHOT TPX-1 44, 43, 52, 45, 57, 50

RECORDING LOG

PAGE NO. 26R/V ConradAND R/V'S 9/2/84DFS IV 48 CHANNELSCRUISE 25-10AREA Newfoundland BasinFORMAT: Seq BLINE NO. 28LINE TYPE CDP SOURCE 4 466 in 3BPI 1600

JULIAN DATE	TIME GMT	TAPE #	FILE COUNT	DEPTH FM	POP RATE SEC	SAMP. RATE MSEC	REC. LEN. SEC	TRIP DEL. SEC	COMMENTS
									TRIGGER 11-11-11-11
246	0928	918	557 558		20	4	12	φ	LSHOT
	0928	919	558						FSHOT TPX-2 40,40,47, 44, 54, 47
	1003	919	660						Lshot
	1003	920	661						Fshot (TPX-1)
	1009	920	680						GUNS → 11, 11, 11, 13 (new delay settings)
	1037	920	762						Lshot
	1037	921	763						Fshot (TPX-2) 43, 41, 49, 45, 52, 48
	1111	921	865						Lshot
	1111	922	866						Fshot (TPX-1) 44, 43, 50, 47, 54, 49
	1145	922	967						Lshot
	1145	923	968						Fshot (TPX-2) 43, 42, 50, 45, 50, 50
	1200	923	013						SB# 68A deployed reel-923 shot-013
	1210	923	44						A NEW SB# 68 STARTED ↑ SB 1600
	1219	923	70						LSHOT (TPX-2) NO WRITE RING ON IT!
	1219	924	71						FSHOT (TPX-1) 43, 41, 50, 45, 54, 51
	1253	924	172						LSHOT (TPX-1) NO WRITE RING ON THIS EITHER
	1253	925	173						FSHOT (TPX-2) 41, 41, 50, 47, 51, 52
	1327	925	274						LSHOT (TPX-2)
	1327	926	275						FSHOT (TPX-1) 43, 41, 50, 46, 55, 53

RECORDING LOG

PAGE NO. 117R/V CONRAD

AND R/V'S _____

LSHOT SB#68DFS IV 48 CHANNELSCRUISE 25-10AREA NEWFOUNDLAND BASINFORMAT: SEG BLINE NO. NA-28LINE TYPE CDPSOURCE 4 x 466 in³ airgunsBPI 1600

JULIAN DATE	TIME GMT	TAPE #	FILE COUNT	DEPTH FM	POP RATE SEC	SAMP. RATE MSEC	REC. LEN. SEC	TRIP DEL. SEC	COMMENTS
2 SEPT 84	246								GUN TRIGGER DELAYS: 11, 11, 11, 13
	1401	926	375		20	4	12	0	LSHOT
	1401	927	376						FSHOT TPX-2 45/44/46/45/55/55
	1435	927	478						LSHOT
	1435	928	479						FSHOT TPX-1
	1509	928	580						LSHOT <u>LSHOT SB 68</u> SHOT 553 @ 1500Z
	1509	929	581						FSHOT TPX-2 32/39/45/45/52/50
	1543	929	683						LSHOT
	1543	930	684						FSHOT TPX-1 35/36/42/45/50/49
	1617	930	785						LSHOT
	1617	931	786						FSHOT TPX-2 38-39-44-45-48-48
	1651	931	888						LSHOT Parity errors / synch. 2 end
	1651	932	889						FSHOT TPX-1 40-40-50-47-50-50
	1722	932	978						LSHOT END LINE #28
	1722	933	979						FSHOT TPX-2 BEGIN LINE #29
	1724	933	984						GUNS 1 & 4 off 40-36-49-47-50-50 TRIGGER -11-11-
	1741	933	039						4 GUNS
	1755	933	79						LSHOT
	1755	934	80						FSHOT TPX-1 44-45-50-49-58-55
	1828	934	180						LSHOT

RECORDING LOG

8/12 → 9/3 → 460 sys/open

PAGE NO. 118.

R/V CONRADAND R/V'S N/ADFS IV 48 CHANNELSCRUISE RC 25/10AREA NEWFOUNDLAND BASINFORMAT: SEG BLINE NO. NB-29LINE TYPE CDPSOURCE 4x466 in³ AIR GUNSBPI 1600

JULIAN DATE	TIME GMT	TAPE #	FILE COUNT	DEPTH FM	POP RATE SEC	SAMP. RATE MSEC	REC. LEN. SEC	TRIP DEL. SEC	TRIGGER DELAYS	COMMENTS
									11 11 11 12 → 11 11 11 13 → 12 11 11 13	
246	1829	935	181		20	1	12	Ø	FSHOT TPX-2	43-42-50-50-59-55
	1902	935	281						LSHOT	GUN #2 OFF 1850
	1902	936	282						FSHOT TPX-1	42-41-48 48-57-58
	1937	936	383						LSHOT	
	1937	937	384						FSHOT TPX-2	46, 43, 49, 47, 57, 54
	2011	937	486						LSHOT	
	2011	938	487						FSHOT TPX-1	47, 46, 50 52 62 61
	2036		562						4 GUNS IN	
	2041		576						C/ delay GUN #4	12 → 13 msec
	2043		585						C/ delay GUN #1	11 → 12 msec
	2045	938	589						LSHOT	
	2045	939	590						FSHOT TPX-2	39 40 48 44 48 48
	2120	939	693						LSHOT	
	2120	940	694						FSHOT TPX-1	41 41 47 50 50 46
	2148	940	778						SONOBUDY # 69	
	2154	940	796						L shot	
	2154	941	797						Fshot (TPX-2)	41, 39, 47, 41, 49, 47
	2228	941	899						L shot	
	2228	942	900						F shot (TPX-1)	39, 40, 49, 42, 47, 47

CORDING LOG

PAGE NO. 11.9

R/V ConradAND R/V'S Sept 1984CRUISE 25-10AREA Newfoundland BasinLINE NO NB-29LINE TYPE CDPSOURCE 4x466 in 3 airgunsDFS IV 48 CHANNELSFORMAT: SEGBBPI 1600

JULIAN DATE	TIME GMT	TAPE #	FILE COUNT	DEPTH FM	POP RATE SEC	SAMP. RATE MSEC	REC. LEN. SEC	TRIP DEL. SEC	COMMENTS
246	2303	942	02		20	4	12	Ø	trigger delays 12, 11, 11, 13 L shot
	2303	943	03						F shot (TPX-2) 40, 40, 45, 41, 48, 46
	2337	943	105						L shot
	2337	944	106						F shot (TPX-1) 40, 39, 47, 43, 48, 45
	2353	944	156						L shot of SB # 69
35 SEPT 247	0011	944	207						LSHOT (TPX-1)
	0011	945	208						FSHOT (TPX-2) 38, 38, 46, 42, 48, 46
	0037	945	288						SB # 70 START
	0045	945	309						LSHOT (TPX-2)
	0045	946	310						FSHOT (TPX-1) 43, 40, 45, 40, 48, 46
	0119	946	412						LSHOT (TPX-1)
	0119	947	413						FSHOT (TPX-2) 41, 40, 46, 44, 50, 47
	0153	947	515						LSHOT
	0153	948	516						FSHOT (TPX-1) Parity errors 42/37/44/42/50/46
	0227	948	618						LSHOT
	0227	949	619						FSHOT TPX-2 40/37/46/43/49/46
	0302	949	721						LSHOT
	0302	950	722						FSHOT TPX-1 40/40/47/44/49/45
	0336	950	824						LSHOT

R/V CONRADAND R/V'S 3 Apt 184CRUISE 25-10AREA NEWY BASINLINE NO. NB-29/30/31LINE TYPE HCS-CDPSOURCE 4 x 466 AGNB-29/30DFS IV 48 CHANNELSFORMAT: SEGBBPI 1000

JULIAN DATE	TIME GMT	TAPE #	FILE COUNT	DEPTH FM	POP RATE SEC	SAMP. RATE MSEC	REC. LEN. SEC	TRIP DEL. SEC	COMMENTS
									TRIGGER= 12/11/11/13 → 11/10/OUT/13
247	0336	951	825		20	4	12	0	FSHOT TPX-2 40/40/50/43/48/46
3 SEPT	0345	951	848						END SB #70
	0411	951	926						LSHOT
	0411	952	927						FSHOT TPX-1 Parity error last shot 44/39/45/41/48/47
	0445	952	29						LSHOT
	0445	953	30						FSHOT TPX-2 42/40/45/42/50/49
	0519	953	133						LSHOT #3 gun down 0446 shot 35
	0519	954	134						FSHOT TPX-1 40/39/42/41/50/48
	0540	954	197						LSHOT NB-29 TPX-1
	0541	955	198						FSHOT NB-30 TPX-2 45/40/45/42/50/50
	0615	955	300						LSHOT
	0615	956	301						FSHOT TPX-1 NB-30 43 40 46 43 50 45
	0649	956	403						LSHOT
	0649	957	404						FSHOT TPX-2 43 39 44 41 49 47
	0724	957	507						LSHOT
	0724	958	508						FSHOT TPX-1 41 38 46 41 48 49 GUN #1 LEAKING
	0743	958	563						LSHOT END LINE 30
	0743	959	564						FSHOT TPX-2 32 39 45 39 48 4 BEGIN LINE 31

RECORDING LOG

PAGE NO. 121...

R/V CONRAD

AND R/V'S _____

DFS IV 48 CHANNELSCRUISE 25-10AREA Newfoundland BasinFORMAT: SEGB maxLINE NO. 31LINE TYPE CDPSOURCE 4x466 in³ airgunsBPI 1600

JULIAN DATE	TIME GMT	TAPE #	FILE COUNT	DEPTH FM	POP RATE SEC	SAMP. RATE MSEC	REC. LEN. SEC	TRIP DEL. SEC	COMMENTS
									TRIGGER DELAYS 11/10/OUT/13
247 3 SEPT	0816	959	664		20	4	12	0	LSHOT
	0816	960	665						FSHOT TPX-1
	0850	960	765						LSHOT (2 AIRGUNS) (#2, #4) FIRING PROBLEMS
	0850	961	766						FSHOT TPX-2 (#4 GUN ONLY) 48, 42, 40, 40, 60, 64
	0923	961	866						LSHOT
	0924	962	867						FSHOT TPX-1 45, 40, 45, 43, 52, 52
	0958	962	969						L shot
	0958	963	970						F shot (TPX-2)
	1030	963	068						gun #1 in the water + firing
	1032	963	073						L shot
	1032	964	074						F shot (TPX-1) 43, 41, 48, 45, 54, 51
	1107	964	176						L shot
	1107	965	177						F shot (TPX-2)
	1141	965	279						L shot
	1141	966	280						F shot (TPX-1) 43, 40, 47, 44, 57, 59
	1149	966	305						#2 gun back on line delays 13, 10, 11, 11
	1215	966	382						LSHOT (TPX-1)
	1215	967	383						FSHOT (TPX-2) 40, 41, 49, 46, 57, 50
	1250	967	485						LSHOT (TPX-2)

RECORDING LOG

PAGE NO. 122

R/V CONRAD

AND R/V'S _____

3 September 84

NB-31

SB# 71

DFS IV 48 CHANNELSCRUISE 25-10AREA NEWFOUNDLAND BASINFORMAT: SEG BMUXLINE NO. NB-31LINE TYPE CDPSOURCE 4x466in³ MAGNUSBPI 1600

JULIAN DATE	TIME GMT	TAPE #	FILE COUNT	DEPTH FM	POP RATE SEC	SAMP. RATE MSEC	REC. LEN. SEC	TRIP DEL. SEC	COMMENTS
									TRIGGER DELAYS: 13, 10, 11, 11
247 3 SEPT	1250	968	486		20	4	12	0	FSHOT (TPX-1) 38, 39, 47, 45, 56, 54
	1324	968	587						LSHOT (TPX-1)
	1324	969	588						FSHOT (TPX-2) 40, 42, 49, 44, 55, 54
	1336	969	624						ALL 4 GUNS FIRING
	1358	969	688						LSHOT
	1358	970	689						FSHOT TPX-1 40/39/45/45/56/55
	1431	970	790						LSHOT
	1431	971	791						FSHOT TPX-2 40/40/46/45/35/51
	1510	971	883						LSHOT LAST ~ 17 SLATS (TPX-1 failed) 38/40/49/45/50/48
	1513	972	896						FSHOT TPX-2 FSHOT 920 @ 1520Z SB# 71
	1546	972	997						LSHOT FHT FAULT SHOTS 979, 980, 981
	1546	973	998						FSHOT TPX-1 37/40/46/42/48/46
	1620	973	100						LSHOT
	1620	974	101						FSHOT TPX-2 40/40/47/43/48/45
	1654	974	204						LSHOT
	1654	975	205						FSHOT TPX-1 40/40/46/44/49/45
	1706	975	242						PULLING GUN #2
	1728	975	306						LSHOT
	1728	976	307						FSHOT 36/39/47/40/47/46

RECORDING LOG

PAGE NO... 123

R/V CONRAD

AND R/V'S _____

DFS IV 48 CHANNELSCRUISE 25-10AREA NEWFOUNDLAND BASINFORMAT: SEG BLINE NO NB-31LINE TYPE MCS-CDP SOURCE 3x466 ABBPI 1600

JULIAN DATE	TIME GMT	TAPE #	FILE COUNT	DEPTH FM	POP RATE SEC	SAMP. RATE MSEC	REC. LEN. SEC	TRIP DEL. SEC	COMMENTS
									TRIGGERS 13-11-11
247	1751	976	(307) 372			4	12		LSHOT SB #71
3 SEPT	1802	976	407						LSHOT
	1802	977	408						FSHOT 38-40-45-44-50-48 TPX-1
	1835	977	508						LSHOT 4 AIRGUNS BACK
	1836	978	509						FSHOT TPX-2 37-40-47-42-49-47
	1909	978	609						LSHOT
	1909	979	610						FSHOT TPX-1 40-39-47-43-48-45
	1943	979	711						LSHOT (198) 3 GUNS ONLY, #2 OUT
	1943	980	712						FSHOT TPX-2 LOST 3 SHOTS - Parity errors @ start
	2013	980	807						(SB #72 F/S) 40/41/47/44/48/46
	2019	980	814						LSHOT
	2019	981	815						FSHOT TPX-1 40-39-47-43-49-37
	2053	981	916						LSHOT
	2053	982	917						FSHOT TPX-2 40 39 45 43 50 46
	2128	982	021						LSHOT
	2128	983	022						FSHOT TPX-1 40 40 46 42 48 46
	2137	983	048						FSHOT 4 GUNS delays 13, 10, 11, 11
	2202	983	123						L shot
	2202	984	124						F shot (TPX-2) 40, 41, 47, 43, 47, 46

RECORDING LOG

PAGE NO. 124

R/V ConradAND R/V'S 3/4 Sept. 1984CRUISE 25-10AREA Newfoundland BasinLINE NO. NB-31LINE TYPE CPPSOURCE 4 x 466 in³ airgunsDFS IV 48 CHANNELSFORMAT: seg BBPI 1600

JULIAN DATE	TIME GMT	TAPE #	FILE COUNT	DEPTH FM	POP RATE SEC	SAMP. RATE MSEC	REC. LEN. SEC	TRIP DEL. SEC	COMMENTS
									delays 13, 10, 11, 11
247	2237	984	228		20	4	1/2	Ø	end SB# 72
	2237	985	229						F shot (TPX-1) 42, 38, 45, 43, 48, 47
	2310	985	229						L shot
	2310	986	330						F shot (TPX-2) 40, 39, 47, 43, 49, 45
	2327	986	379						SB# 73 deployed reel-986 shot-330
	2345	986	433						L shot
	2345	987	434						F shot (TPX-1) 40, 39, 46, 42, 48, 47
	2350	987	448						gun #2 2 RF
4 SEPT 248	0019	987	535						L SHOT (TPX-1)
	0019	988	536						F SHOT (TPX-2) 38, 39, 48, 42, 56, 46
	0053	988	638						L SHOT (TPX-1)
	0053	989	639						F SHOT (TPX-2) 38, 41, 46, 44, 48, 45
	0127	989	740						L SHOT (TPX-2)
	0127	990	741						F SHOT (TPX-1) 40, 39, 45, 42, 50, 48 / 741-743 mislabeled as tape 980
	0137	990	770						ALL 4 GUNS FIRING
	0200	990	842						L SHOT SB# 73
	0202	990	844						L SHOT
	0202	991	845						F SHOT TPX-2 40 40 49 44 52 46
	0236	991	946						L SHOT

RECORDING LOG

PAGE NO. 125R/V CONRAD

AND R/V'S _____

DFS IV 48 CHANNELSCRUISE 25-10AREA NEWFOUNDLAND BASINFORMAT: SEGRLINE NO NB-31LINE TYPE C.D.PSOURCE 4x466in³ AIRGUNSBPI 1600

4 SEPT 84

JULIAN DATE	TIME GMT	TAPE #	FILE COUNT	DEPTH FM	POP RATE SEC	SAMP. RATE MSEC	REC. LEN. SEC	TRIP DEL. SEC	COMMENTS
									TRIGGER DELAYS: 13/10/11/12
248	0236	992	947		20	4	12	0	40/40/47/42/50/45 FSHOT TPX-2
	0310	992	051						LSHOT
	0310	993	052						FSHOT 40/39/42/45/50/46
	0345	993	153						LSHOT
	0345	994	154						FSHOT TPX-2 37/39/47/44/50/52
	0419	994	255						LSHOT
	0419	995	256						FSHOT TPX-1 40/38/46/44/54/49 ΔDELAY 13/10/11/12 FSHOT 308
	0452	995	356						LSHOT
	0452	996	357						FSHOT TPX-2 39/40/44/42/51/48
	0520	996	439						LSHOT
	0520	997	440						FSHOT TPX-1 40/39/45/42/50/49
	0559	997	541						LSHOT FSHOT
	0559	998	542						FSHOT TPX-2 34 37 45 41 49 48
	0610	998	587						LSHOT TPX-2
	0610	999	588						Delays: 13/10/11/12 FSHOT TPX-1 38, 38, 38, 38, 46, 46
	0640	999	679						FSHOT, SB# 74A
	0644	999	689						LSHOT, TPX-1
	0644	1000	690						FSHOT, TPX-2 36, 36, 45, 40, 50, 50
	0649	1000	704						LSHOT, SB # 74A

END LINE NB-31
BEGIN LINE NB-32

RECORDING LOG

PAGE NO. 126.

R/V CONRAD

AND R/V'S _____

DFS IV 48 CHANNELSCRUISE 25-10AREA NEWFOUNDLAND BASINFORMAT: SEGRLINE NO NB-32LINE TYPE CDPSOURCE 4x466 in³13/10/11/11→ 13 11 11 11 BPI 16004 SEPT, 1984

JULIAN DATE	TIME GMT	TAPE #	FILE COUNT	DEPTH FM	POP RATE SEC	SAMP. RATE MSEC	REC. LEN. SEC	TRIP DEL. SEC	COMMENTS
248	0657	1000	730		20	4	12	φ	Begin SB# 74.
	0712		773						Parity + sync. errors
	0718	1000	793						LSHOT (TPX-2)
	0718	1001	794						FSHOT (TPX-1) 35, 39, 46, 43, 55, 49.
	0732	1001	895						LSHOT (TPX-1)
	0753	1002	896						FSHOT (TPX-2) 38, 38, 49, 45, 56, 49, Delays = 13/19/11/12.
	0827	1002	000						LSHOT
	0827	1003	001						FSHOT (TPX-1) 36 36 46 41 54 51
	0900	1003	101						LSHOT (TPX-1) END SB# 74
	0901	1004	102						FSHOT (TPX-2) 36, 38, 47, 44, 55, 51
	0935	1004	205						LSHOT
	0935	1005	206						FSHOT TPX-1 32 37 46 41 52 51
	0949	1005	246						change delay airgun #2 10 → 11
	1009	1005	307						L shot
	1009	1006	308						F shot 33, 39, 45, 40, 46, 50
	1044	1006	411						L shot
	1044	1007	412						F shot (TPX-1) 32, 40, 45, 44, 56, 50
	1118	1007	513						L shot
	1118	1008	514						F shot (TPX-2)

RECORDING LOG

PAGE NO. 127

R/V Conrad

AND R/V'S 4 Sept. 1984

CRUISE 25-10

AREA Newfoundland Basin

LINE NO DB-32

LINE TYPE CDP

SOURCE 4 x 46 in 3 airguns

DFS IV 48 CHANNELS

FORMAT: Sec B

BPI 1600[illegible]