

SCRIPPS INSTITUTION OF OCEANOGRAPHY DUAL CHANNEL SEISMIC SYSTEM OPERATIONS LOG

CRUISE: KK81-0626-Leg 4 AREA: Western Pacific PROJECT: Mesozoic Stratigraphy PAGE: 1

DATE DAY	REEL	TIME	SHOT	DELAY CH1 CH2	LENGTH CH1 CH2	RATE CH1 CH2	DATA CH1 CH2	SOURCE	REP RATE	SHIP SPEED KTS	REMARKS	OBS
263	1	0054 0107	1	2	4	2	R	80cc	8	7.9	water gun, stream depth previous delay incorrect T=20'	TS
20		0115		0	4						change delay	
Sept		0218	509	1	4						change delay	
1981		0239	634	2	4		R		4.5 4.0		stop recording, one bad rec'd	
		0327	925	2	4	2						
		0513	1	2	4	2	R SB	80cc	10	8.0	start SB-ASPER-6	
		0518	32		5	8						
		0519		2	5	7					reset RN's ran too long of a data trace 2	
	1	0523 0557		4	5	7					discontinue ASPER-6	
4	2	0600 0752	1 671	4 7	5 5	2 2	R R	80cc 80cc	10 20(10)	8.0 7.5	start Reel 2 recording every other shot since delay sample 2 reprobe	
		0929 0930	962	7	5	2	R	80cc	16(8)	7.5	change rep rate to 8 sec 4.5 read errors	TS
		1002	1086					80		5.0	cls put in 2nd water gun cls air hose leak, s.	
		1004 1045		7	7	2		160		7.5	cls off length, 5.3 errors	
		1057	1248 1293							5.0	cls put in 2nd water gun and cls back up	
	2	1808	2909	7	4	2	R	160	12	7.5	cls off length 149 errors	
4	3	2021	3576	7	4	2	R	160cc	12	7.5	Start Reel 3 166 errors	
	3	2211 2219	65	7	4	2	R		12		1 sec timing delay error somewhere timing problems corrected	

beginning of
tape
essentially delay in tape
header = 7. should be 7+1
one gun firing

SCRIPPS INSTITUTION OF OCEANOGRAPHY
DUAL CHANNEL SEISMIC SYSTEM OPERATIONS LOG

CRUISE: KK81-0626-Leg4 AREA: Western Pacific PROJECT: Mesozoic Stratigraphy PAGE: 2

DAY	REEL	TIME	SHOT	DELAY CHI CH2	LENGTH CHI CH2	RATE CHI CH2	DATA CHI CH2	SOURCE	REP RATE	SHIP SPEED	REMARKS	OBS
20	3	2238	158	7	4	2	R	80	12	7.7	enva count 177, pull gun	TS
264	2	0008	609	4	4	2	R	80	12	7.4	lost some water bottom, 177E202025	
21	2	0046	796					160			Change delay	
Sept		0057	855	3				160			enva 183	
1981		0225	1292	5	4	2	R	160	12	7.1		
		0315	1543	6	4						end Chan 1 - end recording	
	3	0504	2088									
		0506	1	0	2	2 2	SB	160	12	7.2	start SB-6	
		0512	27	0	2	2	SB				halt SB no good	
	3		28		2	2 0.5	SB	160			garbage on rest of tape	
		0520	36	— last shot		NO	EO					
3	4	0521	1	0 0	1 2	2 0.5	R SB	160	12	6.1	SB - Asper 7 (418)	
		0526	24		2	—					adjusting gain on Chan 2, OK now	
		0528	38								SB off port bow	
			93								one gun only	
	4	0540	99								halt to change SB 2-mill	
				garbage								
	3	0545	1	5 2	5 9	2 2	R SB	160	12	7.1	SB + Ref, both 2-mill	
		0637	266								still recording SB but now	
											well passed R1, stop recording	
		0723	488	5	5	2	R	160	12	7.6	CHAN 1 only, begin	
		0912	1037	5	5	2	R	80	12	7.5	water gun out enva 226	
		0912	1037	5	5	2	R	160	12	7.6	water gun out	
	4	1346	2405	1	9	2	R	160	12		Sea Mount enva 262	
3	5	1525	2899	1	9	2	R	160	12	7.7	enva 295	

SCRIPPS INSTITUTION OF OCEANOGRAPHY

DUAL CHANNEL SEISMIC SYSTEM OPERATIONS LOG

CRUISE: K181 0626 Leg 4 AREA: Western Pacific

PROJECT: Meso201c Stratigraphy PAGE: 3

LINE DAY	REEL	TIME	SHOT	DELAY CHI CH2	LENGTH CHI CH2	RATE CHI CH2	DATA CHI CH2	SOURCE	REP RATE	SHIP SPEED	REMARKS	OBS
1	5	1554 ~1610 1850 1920	3044	1	9	2	R	180 80 160	12	7.5	2-water guns 297 error lost port gun port gun in water port gun not firing sea state is higher 302 errors, one water gun	13
		1928	20	1	9	2	R	80	12	7.5		
		2213	845	1	6	2	R	80	12		change sample length	
(264)	5	2214	853	1	6	2	R				end' reel 5 error 316	
(265)	6	2215	854	1	6	2	R	80	12		Begin reel 6	
		0046	1614	2	6						change delay	
		0118									sync out (aa 2219 Reel 3)	
		0121	1783	2	6	2	R	80	12	7.5	reset sync off by 2-sec	
		0123	1805								more bad sync	
		0145									water gun quit	
	6	0207	2005								Halt system error at 327	
											measured DC offset	
											(negative) on both channels	
(265)	7	1416	1	1	7	2	R	160	12	7.5	25 Hz Filter on CHAM. port sel	
22 Sept 81		1429	1								insert Shot #1 head 24' Tol 15'	
		1430	6	1	0	2	R	160	12	7.5	Begin Asper-SB-8	
		1500	154	1	1	2	R	160	12	7.5	change delay when 2	
		1538	342	1	7	2	R	160	12	7.5	end Asper-8 (stop running at 1523)	
		1653	719	3	5	2	R	160	12	7.5	c/length + delay	
		1735	928	4	5	2	R	160	12	7.5	c/delay 30 error	
		1755	1028	5	5	2	R	160	12	7.5	c/delay 30 error	
(266)	7	0030	2962	5	5	2	R	160	12	7.4	41 error	
4	8	0044	3016	5	5	2	R	160	12	7.4	44 error	
23 Sept 81	8	0106	3135								lost Sync	
		0115	3169								lost Sync	

* for rest of cruise channel one had 25Hz Hi cut filter

SCRIPPS INSTITUTION OF OCEANOGRAPHY DUAL CHANNEL SEISMIC SYSTEM OPERATIONS LOG

CRUISE: KK81 0626 Leg 4 AREA: Western Pacific

PROJECT: Mesozoic Stratigraphy PAGE: 4

DATE DAY	REEL	TIME	SHOT	DELAY CHI CH2	LENGTH CHI CH2	RATE CHI CH2	DATA CHI CH2	SOURCE	REP RATE	SHIP SPEED	REMARKS	OBS
23 Sept 1981	8	0143	3305	6	4	2	R	160	12	7.5	change delay + length sync reset	15
		0145	3318								starboard off test. error	47
		0315	3767					80			port off, test	
		0325	3816					80			back to 160	
		0335	3867					160			starboard off	
		0430		7	3	2	R	160			port gun, starboard off	
		0610	545	6	4	2	R	160	12	7.4	port off	
		0615	570					80			last starboard gun	
		0625	620					80			System had stopped	
		0630	2245					80			Restarted	
(266) 8	8	1145	2245	6	4	2	R	160	12	7.6	up and running	75
(267) 24 Sept 81	9	1200	Reset								gun 8	
		1215									error 43	
		1320	6332					160	12	7.5	error 82	
		1640	1322	6	4	2	R	160			starboard off 7 phase	
		2053	2586	6	4	2	R	80	12	7.5	port off	
		2214	2991	7	4	2	R	160	12	7.5	both guns on	
		2215	2995	6	4	2	R	160			out of sync, starboard	
		2220	3024	6	4	2	R	160			gun firing, interm. stability	
		2225	3046	6	4	2	R	80	12	7.5	remove from firing starboard gun	
		2112	3876	6	4	2	R	80	12	7.5	pull in starboard gun	
(268) 24 Sept 81	9	0135	3945	6	4	2	R	80			both guns off	115
		0200	17								one gun on	
		0336	509								gun unit went off line	129
	9	0420	510	6	DATA	GA	R	80	12	7.5		
	10	0630	1165	6	4	2	R	80	12	8.0		
		0640	1242	6	4	2	R	80				

Put OTHER UNIT ON LINE
Started at Beginning of Tape
Lost 3 1 Hr Data, error 132

SCRIPPS INSTITUTION OF EANOGRAPHY
DUAL CHANNEL SEISMIC SYSTEM OPERATIONS LOG

DUAL CHANNEL SEISMIC SYSTEM OPERATIONS LOG

CRUISE: KK 81 0626 Leg 4 AREA: Western Pacific

PROJECT: Mesozoic Stratigraphy PAGE: 5

TIME	REEL	TIME	SHOT	DELAY CHI CHZ	LENGTH CHI CHZ	RATE CHI CHZ	DATA CHI CHZ	SOURCE	REP RATE	SHIP SPEED	REMARKS.	OBS
(267)	10	0700	1313									
(267)	10	0740	1320	6	4	2	R	Air Gun	12	7.6	GUN OFF	
(267)		1200	2621	6	4	2	R	80 ci + sparker	12	7.9	Sparke (Air Guns Down) Air Gun + Sparker error 137	
24 Sept		1300	2950					2000 Junk	16		Trigger Rate 8 sec Tape 2 very off	
1981		1352	3104						12		rep rate change	
		1307							16(8)		rep rate change	
		1352							12		error 142	
		1506	3476	6	4	2	R	80 A/G + sparker	12	8.0	error 143	
		1600	3743	6	4	2	R	"	12	7.7	error 143	
		1700	4041	6	4	2	R	"	12	7.6	error 143 ~ 1245 60 Hz in case	
		1800	247	6	4	2	R	"	12	7.5	error 143	
		1900	547	6	4	2	R	sparke	12	7.4	error 143	
		2000	846	6	4	2	R	80 ci A/G	12	7.8	error 144	
		2100	1144	6	4	2	R	"	12	7.8	error 148 34 head 25' tail	
		2200	1446	6	4	2	R	"	12	7.3	error 148	
		2300	1748	6	4	2	R	"	12	7.7	error 151	
		2308	1788					80 cc AG			sparke off	
		2313	1816					80 AG + sparke			sparke on / w / AG	
		2316	1826					sparke			A/G off, sparke only	
	10	2321	1854					80 AG + sparke				5/52
	11	2326	1879	6	4	2	R	"	12	7.6	Begin reel	155
268		0000	2047	6	4	2	R	"	12	7.2	errors	160
25		0030						"			errors	241
Sept		0040	1	6	4	2	R	"	12	7.5	reel system next errors	0
1981		0104		problem with tape reader written				to online unit		reload	and rescan Reel II	
	11	0206	310	6	4	2	R	80 AG + SPARKER	12	7.6	First Record Reel II	4
		0302	592	6	4	2	R	"	12	7.6	errors	4
	11	0415	956	6	4	2	R	"	12	7.5	errors	7

SCRIPPS INSTITUTION OF OCEANOGRAPHY
DUAL CHANNEL SEISMIC SYSTEM OPERATIONS LOG

CRUISE: KK81-0626-Leg 4 AREA: Western Pacific PROJECT: Mesozoic Stratigraphy PAGE: 6

DATE DAY	REEL	TIME	SHOT	DELAY CHI CH2	LENGTH CHI CH2	RATE CHI CH2	DATA CHI CH2	SOURCE	REP RATE	SHIP SPEED	REMARKS	OBSS errors
25 Sept 81 (268)	11	0421	981	6	4	2	R	8000 j spark 80cc AG	12	7.6	error	7
25 Sept 81		0500	1178	6	4	2	R	"	12	7.4	lost A/G	9
		0552									Stopped Sparker	9
		0708	1821								water gun on, spark (off?) check w/gun, put back in	
		0717	1822	6	4	2	R	80 cc w/g	12	7.2	Air Gun + Water Gun same 14	
	837	0825									Air Gun Delayed 1 sec	
		1139	3130	6	5	2	R	160 cc			Sandbag over	
		1150	3183								A/G off	16
		1224	3357	6	4	2	R	80cc WG	12	8.5	Head 25' Tail 20 error	21
	11	1250	3486	6	4	2	R	"	12		tape drives dropped offline	22
		1406									power fail??	
26 Sept 81 (269)	12	1616	1	6	4	2	R	80cc w/g	12	8.9	restart system errors	0
		1700	219	7	3	2	R	80cc WG	12	7.8	change delay + length	1
		1800	520	7	3	2	R	"	12	7.8	No.	4
			527					"			change channel 101 was	
		1900	820	7	3	2	R	"	12	8.0	high negative number	4
		2000	1120	7	3	2	R	"	12	7.7		4
		2100	1420	7	3	2	R	"	12	8.1		5
		2200	1720	7	3	2	R	"	12	7.6		5
		2300	2020	7	3	2	R	"	12	7.4		5
		0005	2347	7	3	2	R	"	12	7.5		8
26 Sept 81 (269)		0108	2665	7	3	2	R	"	12	7.3	Lost Sync	10
		0118	2709	7	3	2	R	"	12		pull water gun, check	
	12	0148		7	3	2	R	"	12		put standard w/g back in	10
		0200	2919		3	2	R	"	12	6.1		

TIME DAY (ZLH)	REEL	TIME	SHOT	DELAY CHI CHZ	LENGTH CHI CHZ	RATE CHI CHZ	DATA CHI CHZ	SOURCE	REP RATE	SHIP SPEED	REMARKS	SHOTS errors
26 Sept 1981	12	0227	3052	7	3	2	R	800 W/G	12	7.9		10
		0300	3219					"	12			10
		0400	3517	7	3	2	R	"	12	7.7		10
		0455	3800	6	4	2	R	"	12	7.9	change delay & length	11
		0500	3821	7	3			"			change delay & length	
		0600	0021	7	3	2	R	800 W/G	12	8.2		12
(269)		0624	143					1600 W/Gs			added 800 w/gun at 13'	
		0700	320	7	3	2	R	"	12	8.0	(0050) ONE W/Gun 578 Gun	13
		0900	924					80 W/G			ONE W/Gun Port Gun	14
		0909	980					80 W/G			BOTH Guns in	
		0919	1025	7	3	2	R	160 W/G	12			
	12	1038	1416					"	12	7.4		15
	13	1200	1830	7	3	2	R	1600 W/Gs	12	7.4	W/Guns (Drive 0)	22
		1300	2130					"	12		change delay Rate	27
		1308	2165	6	3	2	R	"	10			
		1402	2480					"	10			36
		1508	2890	6	3	2	R	"	10	7.0		
		1535	3042	7	3	2	R	"	12	7.2	clasp water, delay	39
		1612	3225	7	3	2	R	"	12	7.5		40
		1700	3464	7	3	2	R	"	12	7.7		44
		1800	3766	7	3	2	R	"	12	7.7		45
		1900	4064	7	3	2	R	"	12	7.9		50
		2000	268	7	3	2	R	"	12	7.5	portail 25' head 16' tail	53
		2100	568	7	3	2	R	"	12	7.4	both guns in 13'	55
		2202	878	7	3	2	R	"	12	7.4		55
		2300	1170	7	3	2	R	"	12	7.4		55
(270)		0005	1490	7	3	2	R	"	12	7.2		56
27 Sept 1981		0116	1946	7	3	2	R	"	12	7.1	portail 27' head, 11' tail	59
		0200	2068	7	3	2	R	"	12	7.3		61
	13	0330	2519	7	3	2	R	"	12	7.3		65

SCRIPPS INSTITUTION OF OCEANOGRAPHY
DUAL CHANNEL SEISMIC SYSTEM OPERATIONS LOG

CRUISE: K1C810626 Leg 4 AREA: Western Pacific PROJECT: Mesozoic Stratigraphy PAGE: 8

DATE DAY	REEL	TIME	SHOT	DELAY CHI CH2	LENGTH CHI CH2	RATE CHI CH2	DATA CHI CH2	SOURCE	REP RATE	SHIP SPEED	REMARKS	OBSS- CROSS
(270) 27 Sept 81	13	0501	2975	7	3	2	R	1600 WGS	12	7.4		71
		0600	3268	7	3	2	R	"	12	7.2		71
		0700	3568	7	3	2	R	"	12	7.3		73
	13	0800	3868	7	3	2	R	"	12	7.4		73
	14	0818	3959	7	3	2	R	"	12	7.3	Begin new reel	80
		0900	73	7	3	2	R	"	12	7.7		83
		1005	397	7	3	2	R	"	12	7.9		84
		1054	642	7	3	2	R	"	12	7.6		86
		1200	969	7	3	2	R	"	12	7.9		89
		1300	1273	7	3	2	R	"	12	7.8		91
		1400	1574	7	3	2	R	"	12	7.8		92
		1426 1431	1726	6	3	2	R	"	10	7.8	start paper, now recording only about 1-sec subtraction	95
		1436	1756	7	2	2	R	"	10	7.7	change delay + length	
		1500	1900	7	2	2	R	"	10	8.0	Site 199	96
		1623	2399	7	2	2	R	"	12		change rep. rate	99
		1624	2402	7	3	2	R	"	12		change record length	99
		1700	2582	7	3	2	R	"	12	7.9		100
		1800	2883	7	3	2	R	"	12	7.8	change delay	
		1823	2998	6	3	2	R	"	12	7.9	change delay	
		1848	3123	5	3	2	R	"	12	7.8	port eel head 24' tail 14'	101
		1900	3184	5	3	2	R	"	12	8.4	change delay	
		1911	3241	4	3	2	R	"	12	7.7	change delay	102
		2005	3507	3	3	2	R	"	12	7.9	change delay	
		2042	3693	4	3	2	R	"	12	7.9	change delay	
		2100	3783	5	3	2	R	"	12	7.8	change delay	106
		2200	4082	5	3	2	R	"	12	7.6		108
		2300	287	5	3	2	R	"	12	7.4		109
(270)	14	2333	456	4	3	2	R	"	12	7.2	change delay	109

SCRIPPS INSTITUTION OF OCEANOGRAPHY
DUAL CHANNEL SEISMIC SYSTEM OPERATIONS LOG

CRUISE: K181 0626 Leg 4 AREA: Western Pacific PROJECT: Mesozoic Stratigraphy PAGE: 9

LINE (DAY)	REEL	TIME	SHOT	DELAY CH1 CH2	LENGTH CH1 CH2	RATE CH1 CH2	DATA CH1 CH2	SOURCE	REP RATE	SHIP SPEED	REMARKS	EOS
(27)	14	0000	588	4	3	2	R	1600	12	7.3	W/Gun	110
28		0011	643	5	3	2	R	"	12		change delay	
Sept		0030	740	6	3	2	R	"	12	7.3	change delay	
1981		0051	843	7	3	2	R	"	12	7.3	change delay	112
(27)		0200	1186	7	3	2	R	"	12	7.3		112
		0300	1487	7	3	2	R	"	12	7.4		112
	14	0303	1505								end of reel	
3	15	0304	1	7	3	2	R	SB	12	7.2	start reel Asper-13 (51A no AGC)	
			27	7	3	2	R	SB	12		change gain (step up 10)	
		0316	59	7	3	2	R	SB	12		change delay chan 2	
		0400	277	7	3	2	R	SB	12	7.6	(stop processing SB13)	128
		0412	336	7	3	2	R	SB			end SB-13	
		0500	575	7	3	2	R		12	7.5		128
		0527	713					8000			pull starboard gun for maint.	
		0700	1176	7	3	2	R		12	7.9		128
		0800	1477	7	3	2	R		12	7.8		129
		0828	1626					1600			Starboard W/Gun id	130
		0946	2014	7	3	2	R		12	7.4		130
		1100	2376	7	3	2	R		12	7.6		134
		1202	2686	7	3	2	R		12	7.8		135
		1300	2977	7	3	2	R		12	7.6		135
		1400	3276	7	3	2	R		12	7.6		135
		1435	3451	6	3	2	R		12		change delay	
		1504	3597	7	3	2	R		12			
		1559	3868									
		1559	3874									
	15	1600	0001	7	3	2	R	SB	12	7.1	reset counter to 0 for SB-Asper-14 41A-AGC, slight clipping of D-wave at beginning	138

SCRIPPS INSTITUTION OF OCEANOGRAPHY
DUAL CHANNEL SEISMIC SYSTEM OPERATIONS LOG

CRUISE: KK81 0626 Leg 4 AREA: Western Pacific PROJECT: Mesozoic Stratigraphy PAGE: 10

TIME DAY	REEL	TIME	SHOT	DELAY CHI CH2	LENGTH CHI CH2	RATE CHI CH2	DATA CHI CH2	SOURCE	REP RATE	SHIP SPEED	REMARKS	SES errors
(271) 28	15	1612	59	7 1	3 10	2 2	R SB	160 ci WGS	12	7.1	change chan 2 delay	141
Sept 1981	15	1630	148	7 1	3 10	2 2	R SB	"	12	7.1		151
		1700	299	7 1	3 10	2 2	R SB	"	12	6.8		
		1705	323								end reel, and site 199	
(271)	16	1705	1	7	3	2	R	160 ci WGS	12	7.3	start reel, reset counter	152
		1800	273	7	3	2	R	"	12	6.9	part reel head 29' tail 13'	153
		1900	573	7	3	2	R	"	12	7.8		154
		2000	874	7	3	2	R	"	12	7.6		155
		2100	1173	7	3	2	R	"	12	7.2		158
		2207	1507	7	3	2	R	"	12	7.5		160
		2300	1773	7	3	2	R	"	12	7.5		162
(272)		0000	2073	7	3	2	R	"	12	7.3	added strain dampening to eel	167
29		0100	2373	7	3	2	R	"	12	7.7		170
Sept		0200	2674	7	3	2	R	"	12	7.8		170
1981		0300	2973	7	3	2	R	"	12	7.7		172
		0338	3164	7	3	2	R	"	12	7.5	Switch to Standard EEL	174
		0351	3232	7	3	2	R	"	12	7.5	Switch to Port EEL	174
		0430	3423	7	3	2	R	"	12			
		0452	3533					80			pull port W gun for check	
		0508	3617	7	3	2	R	160	12	4.5	put port gun back in	177
		0612	3932	7	3	2	R	160	12	8.5		182
		0702	86	7	3	2	R	"	12	7.8		184
		0809	427	7	3	2	R	"	12	7.8		188
		0908	719	7	3	2	R	"	12	7.8		188
		1010	1029	7	3	2	R	"	12	7.8		191
		1050	1227	7	3	2	R	"	"	7.8		191
		1200	1577	7	3	2	R	"	"	7.9		193
	16	1300	1877	7	3	2	R	"	"	8.0		195

SCRIPPS INSTITUTION OF OCEANOGRAPHY

DUAL CHANNEL SEISMIC SYSTEM OPERATIONS LOG

CRUISE: K1C81 0626 Leg 4 AREA: Western Pacific PROJECT: Mesozoic Stratigraphy PAGE: 11

DATE (Day)	REEL	TIME	SHOT	DELAY CHI CHZ	LENGTH CHI CHZ	RATE CHI CHZ	DATA CHI CHZ	SOURCE	REP RATE	SHIP SPEED	REMARKS	QCC (Error)
1	17	1301	1880	7	3	2	R	1600	12	8.0	Water Guns	0
(272)		1402	2187	"	.	8.0		0
29		1504	2501	.	.	.	"	"	.	8.0		1
Sept		1605	2805	7	3	2	R	160	12	7.9	portail head 24', tail 16'	2
1981		1700	3078	7	3	2	R	160	12	8.1		5
		1800	3377	7	3	2	R	160	12	8.1	change delay	6
		1844	3594	6	3	2	R	160	12		change delay	
		1945	3597	7	3	2	R	160	12			
		1900	3677	7	3	2	R	"	12	7.7		7
		1921	3786	6	3	2	R	"	12		change delay, lost ~ 5 min	
		2000	3978	6	3	2	R	"	12	7.7	of sealloor, heavy bolt	7
											on monitor	
		2100	181	6	3	2	R	"	12	7.6		8
		2204	507	6	3	2	R	"	12	7.2		11
		2308	824	6	3	2	R	"	12	7.0		12
(273)		0000	1080	6	3	2	R	80	12	7.0		12
30		0102	1392	6	3	2	R	"	12	7.2		14
Sept		0112									PORT W/Gun on Board	
1981		0148	1624					160			PORT W/Gun in Water	
		0150	1640					80				
			1650					160				
		0200	1681	6	3	2	R	"	12	7.2		14
			1830					80			PORT	
		0300	1982	6	3	2	R	"	12	7.5	standard gun quit again	14
											STopped for RFR	
(273)		0430	1992	6	3	2	R	80	12	6.2	UP and Away	14
		0434	2010	"	.	7.6		
		0500	2143	"	.	7.7		15
		0601	2449	6	3	2	R	80	12	7.7		17
	17	0708	2783	6	3	2	R		12	7.8		20

SCRIPPS INSTITUTION OF OCEANOGRAPHY
DUAL CHANNEL SEISMIC SYSTEM OPERATIONS LOG

CRUISE: KK81 0626 Leg 4 AREA: Western Pacific PROJECT: Mesozoic Stratigraphy PAGE: 13

TIME DAY	REEL	TIME	SHOT	DELAY CH1 CH2	LENGTH CH1 CH2	RATE CH1 CH2	DATA CH1 CH2	SOURCE	REP RATE	SHIP SPEED	REMARKS	END
(274)	18	0600	1451	6	3	2	R	160cc	12	7.9	Water Guns (2)	52
		0700	1749	6	3	2	R	"	12	7.8		53
19		0708	1791	6	3	2	R	"	12	7.8	Start New Reel	56
010619		0802	2063	6	3	2	R	"	12	7.6		58
		0900	2349	6	3	2	R	"	12	7.8		59
		1003	2667	6	3	2	R	"	12	7.6		59
		1100	2949	6	3	2	R	"	12	7.5		59
		1200	3250	6	3	2	R	"	12	7.5		59
		1210	3269	6	3	2	R	S	10	7.8	Sonde Buoy (CH2) N.L.	59
		1212	0	6	3	2	R	S	10			59
		1220	41	6	3	2	R	S	10		Sonde Buoy off	59
		1226	60	6	3	2	R		12	7.8		59
		1301	236	6	3	2	R	160	12	7.6		61
		1400	529	6	3	2	R	"	12	7.3		64
		1500	829	6	3	2	R	"	12	7.4		64
		1600	1129	6	3	2	R	"	12	7.3		64
		1700	1429	6	3	2	R	"	12	7.3		64
		1800	1729	6	3	2	R	"	12	7.5		64
		1900	2029	6	3	2	R	"	12	7.2		64
		2006	2361	6	3	2	R	"	12	7.6		64
		2100	2629	6	3	2	R	"	12	7.7		65
		2200	2929	6	3	2	R	"	12	7.2		65
		2300	3229	6	3	2	R	"	12	7.0		66
275		0000	3529	6	3	2	R	"	12	7.1		69
020618		0015	3606	5	3	2	R	"			change delay	
		0027	3665	6	3	2	R	"			change delay	
		0100	3830	6	3	2	R	"	12	7.3		71
		0200	0033	6	3	2	R		12	7.4		73
	19	0300	0333	6	3	2	R		12	7.5	end reel 19	73
		0328	474	6	3	2	R					

SCRIPPS INSTITUTION OF OCEANOGRAPHY
DUAL CHANNEL SEISMIC SYSTEM OPERATIONS LOG

CRUISE: K181 0626 Leg 4 AREA: Western Pacific PROJECT: Mesozoic Stratigraphy PAGE: 14

DATE DAY	REEL	TIME	SHOT	DELAY (SEC) CH1 CH2	LENGTH (SEC) CH1 CH2	RATE (CH/sec) CH1 CH2	DATA CH1 CH2	SOURCE	REP RATE	SHIP SPEED	REMARKS	OPS
1981	20	0333	1	6	3	1	R	160cc	12	7.8	Nois Filter 125 Hz out of sync, first shot	77
(275)		0333	2	6	3	1	R	"	12	7.4	1 m. illi. sec Sample Rate	78
020181		0500	0436	6	3	1	R	"	12	7.6	Alias Filter 125 Hz	81
		0600	0737	6	3	1	R	"	12	7.7		82
		0700	1036	6	3	1	R	"	12	8.0		85
		0802	1347	6	3	1	R	"	12	7.8		90
		0900	1636	6	3	1	R	"	12	8.0		95
		1000	1937	6	3	1	R	"	12	7.9		96
		1100	2237	6	3	1	R	"	12	8.0		101
		1200	2537	6	3	1	R	"	12	8.0		101
		1300	2836	6	3	1	R	"	12	8.0		106
		1400	3136	6	3	1	R	"	12	7.8	end reel 20	127
		1436	3313	6	3	1	R	"	12	8.0	begin reel 21	131
		1800	239	6	3	1	R	"	12	7.6	part reel head 24' tail 14'	136
		1900	539	6	3	1	R	"	12	7.7		147
		2000	839	6	3	1	R	"	12	7.3		161
		2100	1139	6	3	1	R	"	12			
		2208	1480	6	3	1	R	"	12			
		2210	1491									
	21	2235	1	6	3	1	R	Gain	CH2 (1)	Reload	while EOF no guard	
	22	2301	133	6	3	1	R	160cc	12	7.1	start new reel with	0
		2330	284	6	3	1	R	160cc	12	7.4	2-channels, but no SB yet	2
		2332	333	6	3	1	R	160	12	6.7	some bad shots, delete SB	3
		0002	433	6	3	1	R	160	12	6.7	Asper - 16, begin 41A	12
03		0006	455	6	3	1	R	160	12	6.7	change delay chan 2,	
Oct		0015	498	6	3	1	R	160	12	6.7	can over seamount, start new SB	
1981	22										Start Asper - 17, bad buoy	
											Restart Asper - 17	
											change delay	

* Note on tapes 20 through 26 channel 1 had 1 msec sample rate but alias set for 2 msec rate (125 Hz).

SCRIPPS INSTITUTION OF OCEANOGRAPHY DUAL CHANNEL SEISMIC SYSTEM OPERATIONS LOG

CRUISE: KK81 0626 Leg 4 AREA: Western Pacific PROJECT: Mesozoic Stratigraphy PAGE: 15

DATE (DAY)	REEL	TIME	SHOT	DELAY CHI CH2	LENGTH CHI CH2	RATE CHI CH2	DATA CHI CH2	SOURCE	REP RATE	SHIP SPEED	REMARKS	BBB errors
276	22	0052	684	6 1	3 10	1 2	R SB	160cc	12	7.2	Asper 18 start 12542	22
03											Asper - 17 continue	22
007		0100	722	6 1	3 10	1 2	R SB	160cc	12	7.3	remove attenuator	22
1981		0106	747								ent SB, lost sync	22
		0107	757	6	3	1	R SB	160cc	12	7.3		22
		0110	767								lost sync	29
		0200	1013	6	3	1	R	"	12	7.1		29
	22	0243	1234	6	3	1	R	"	12		end reel 22	
	23	0245	1235	6 0	3 10	1 2	R	160	12		Asper 18 41A start	
		0247									bad buoy, reset counter to 1	
		0248	1	6 0	3 10	1 2	R SB	160	12	7.2	Restart Asper 18	35
		0256	39	6 1	3 10	1 2	R SB	"	12	7.2	change delay chan 2	
		0300	60	6 1	3 10	1 2	R SB	"	12	7.2	end SB	
		0328	0202								end SB-18	57
		0330		6 #	3	1	R	"	12			58
		0407	0387	6	3	1	R	"	12	7.3		68
		0505	676	6	3	1	R	"	12	8.0		76
		0600	954	6	3	1	R	"	12	8.4		82
		0700	1251	6	3	1	R	"	12	8.1		94
		0800	1550	6	3	1	R	"	12	8.0		103
		0900	1851	6	3	1	R	"	12	8.1		114
		1001	2158	6	3	1	R	"	12	8.3		121
		1100	2454	6	3	1	R	"	12	8.4		139
		1200	2751	6	3	1	R	"	12	8.3		150
		1300	3051	6	3	1	R	"	12	8.1		155
	23	1308	3092	6	3	1	R	"	12	8.1	End Reel 23	

See note p 14

SCRIPPS INSTITUTION OF OCEANOGRAPHY
DUAL CHANNEL SEISMIC SYSTEM OPERATIONS LOG

CRUISE: KIC81 0626 Leg 4 AREA: Western Pacific PROJECT: Mesozoic Stratigraphy PAGE: 16

LINE	REEL	TIME	SHOT	DELAY CH1 CH2	LENGTH CH1 CH2	RATE CH1 CH2	DATA CH1 CH2	SOURCE	REP RATE	SHIP SPEED	REMARKS	OBS
LINE 03	24	1308 ~1435 ~1440	3093	6	3	1	R	160ci	12	8.1	Align Gun (25kt) 125kt	0
03		1600	3951	6	3	1	R	160ci	12	8.3	Water Gun	13
04		1700	155	6	3	1	R	"	12	8.2	out of sync	16
1981		1800	455	6	3	1	R	"	12	8.1	back in sync	21
		1900	755	6	3	1	R	"	12	7.8		24
		2000	1055	6	3	1	R	"	12	7.9		24
		2100	1354	6	3	1	R	"	12	8.0		24
		2104	1377					80		4.0	pull port gun for maint.	25
		2200	1654	6	3	1	R	"	12	8.0		26
		2300	1953	6	3	1	R	"	"	8.1		29
(277) 04		0001	2260	6	3	1	R	"	12	8.2		
04	24	0011	2314									
1981	25	0011	2315	6	3	1	R	80ci	12	8.2	ONE Water Gun	31
		0100	2554	6	3	1	R	"	12	8.0	Start New Reel	39
		0213	2921	6	3	1	R	"	12	8.0		42
		0302	3166	6	3	1	R	"	12	6.5	Port Gun Back in water	46
		0305	3182								BOTH Guns Working	
		0400	3453	6	3	1	R	160ci	12	7.9		48
		0500	3753	6	3	1	R	"	12	7.9		54
		0600	4053	6	3	1	R	"	12	8.1		55
		0714	0333	6	3	1	R	"	12	8.5		63
		0800	557	6	3	1	R	"	12	8.3		65
		0900	855	6	3	1	R	"	12	8.0		69
		1002	1169	6	3	1	R	"	12	7.9		70
		1023	1271	6	3	1	R	"	12	7.9	SB-19 Start Seismic	72
		1023	0	6	3	1	R	160/173	12	8.0	Start Seismic	72
	25	1032	36	6	3	1	R	"	12			

see note p. 14

SCRIPPS INSTITUTION OF OCEANOGRAPHY

DUAL CHANNEL SEISMIC SYSTEM OPERATIONS LOG

CRUISE: K(81) 0626 Leg 4 AREA: Western Pacific

PROJECT: Mesozoic Stratigraphy PAGE: 17

REEL	TIME	SHOT	DELAY CHI CH2	LENGTH CHI CH2	RATE CHI CH2	DATA CHI CH2	SOURCE	REP RATE	SHIP SPEED	REMARKS	DBS
25	1045	109	6 1	3 10	1 2	R SB	160/SB	12	8.1	Always Filter 125Hz	72
26	1054	156	6 1	3 10	1 2	R SB	160/SB	12	8.0	SB-19 & Water Gun	86
	1100	185	6 1	3 10	1 2	R SB	"	12	7.9	SB-19 & Water Gun	80
	1125	300	6 6	3 3	1 1	R	160	12	7.9	End SB-19	88
	1200	484	6 6	3 3	1 1	R	160	12	8.1		88
	1300	785	6 6	3 3	1 1	R	"	12	8.0		88
	1422	1197	6 6	3 3	1 1	R	"	12	8.0		94
	1500	1385	6 6	3 3	1 1	R	"	12	8.1	port side head 27' tail 16'	96
	1600	1684	6 6	3 3	1 1	R	"	12	8.0		98
	1700	1985	6 6	3 3	1 1	R	"	12	8.1		99
	1800	2585	6 6	3 3	1 1	R	"	12	8.0		102
	1900	2585	6 6	3 3	1 1	R	"	12	8.1		104
	2000	2885	6 6	3 3	1 1	R	"	12	8.2		107
26	2047	3118	6 6	3 3	1 1	R	"	12	8.1	bad shot, end reel	109
27	2047	3119								Always Filter 500Hz	
4	0413	1					Sample Rate 0.5 millise	Changed Sample		Rate .5 millise	
27	0413	1	7 7	2 2	1/2	R	160i	12	7.9	Hi pass filter is in the circuit 25Hz	1
278	0500	234	7 7	2 2	1/2	R	"	12	7.8	port side head 17' tail 10'	14
05	0600	534	7 7	2 2	1/2	R	"	12	8.3	change delay	37
Oct	0651	790	6 6	2 2	1/2	R	"	12	8.3	change delay	
1981	0700	834	7 7	2 2	1/2	R	"	12			51
	0800	1133	7 7	2 2	1/2	R	"	12	8.4		66
	0900	1434	7 7	2 2	1/2	R	"	12	8.1		87
	1000	1733	7 7	2 2	1/2	R	"	12	8.3		104
	1100	2034	7 7	2 2	1/2	R	"	12	8.2		125
	1136	2215	7 7	2 2	1/2	R	80c	12	8.0	SB Gun NOT working, Show Down To take in Gun	135
	1142	2242	7 7	2 2	1/2	R	"	12		Back up to Speed Only Port Gun	
	1146	2267	7 7	2 2	1/2	R	"	12			
27	1200	2333	7 7	2 2	1/2	R	"	12	8.4		145

see note p.14

SCRIPPS INSTITUTION OF PAEANOGRAPHY

DUAL CHANNEL SEISMIC SYSTEM OPERATIONS LOG

CRUISE: KK81 0626 Leg 4 AREA: Western Pacific PROJECT: Mesozoic Stratigraphy PAGE: 18

TIME	REEL	TIME	SHOT	DELAY	LENGTH	RATE	DATA	SOURCE	REP	SHIP	REMARKS	CBS
				CHI	CH2	CHI	CH2	water guns	RATE	SPEED		
(278)	27	1301	2642	7	2	1/2	R	80cc	12		STB Gun Out	161
(278)	28	1310	1	6	3	1	R	80cc	12	8.4	end Reel 27	0
5 Oct 81		1330	100	6	3	1	R	"	12	8.3	Needs Filter 250 Hz	5
		1404	271	6	3	1	R	"	12	8.2	1 milli sec Sample Rate	10
		1428	392								25 Hz LO-CUT Filter	
		1435	425								Show Down To put Gun in Water	
		1502	563	6	3	1	R	160cc	12	8.3	BOTH Guns in Water	18
		1524	671	6	3	1	R	"	12	8.1		
		1600	852	6	3	1	R	160cc	12	7.9	back to port reel were	23
		1700	1151	6	3	1	R	"	12	8.1	and something since 0700	27
		1800	1451	6	3	1	R	"	12	7.8	some heavy switching to	35
		1900	1751	6	3	1	R	"	12	7.9	starboard reel with 60 cycle	40
		2000	2051	6	3	1	R	"	12	7.9	port reel head 23' back 14'	45
		2100	2351	6	3	1	R	"	12	8.2		47
		2200	2652	6	3	1	R	"	12	8.0		50
		2300	2951	6	3	1	R	"	12	7.3		55
		2305						80			lost port gun	58
(279)		0000	3255	6	3	1	R	"	12	7.8		
5 Oct 81	28	0010	3300	6	3	1	R	80	12	7.8	end reel	
	29	0010	1	6	3	1	R	80	12	7.8	begin reel	62
		0023	2					80				63
		0100	249	6	3	1	R	"	12	7.7		83
		0200	850	6	3	1	R	"	12		note →	150
		0400	1149	6	3	1	R	"	12	8.4		178
	29	0500	1328	6	3	1	R	160	12		BOTH Guns in Water	

0436

SCRIPPS INSTITUTION OF OCEANOGRAPHY

DUAL CHANNEL SEISMIC SYSTEM OPERATIONS LOG

CRUISE: KK81 06226 Leg 4 AREA: Western Pacific PROJECT: Mesozoic Stratigraphy PAGE: 19

TIME	REEL	TIME	SHOT	DELAY	LENGTH	RATE	DATA	SOURCE	REP	SHIP	REMARKS	OBS
(279)	29	0500	1450	6	3	1	R	160ci	12	8.1		199
06		0600	1749	6	3	1	R	"	12	7.7		222
Oct		0700	2048	6	3	1	R	"	12	5.2	Port Gun out of Water	255
1991		0714	2123					80ci				
		0717	2134					"				
		0800	2348	6	3	1	R	"	12	8.6		282
		0900	2651	6	3	1	R	160ci	12	4.7	BOTH Gun in Water	309
		0905	2674	6	3	1	R	"	12	8.6		
	29	0945	2876	6	3	1	R	"	12		Stop for Core Station	319
								Wrote to F			End Beam	
	30	1538	1	6	3	1	R	80ci	12	8.6	reload system	0
		1554						160	12		added a .05 in Cap.	
		1600	107	6	3	1	R	"	12	8.2	across output of 10-cut Filter	2
		1700	407	6	3	1	R	"	12	8.1	both water guns	4
		1800	707	6	3	1	R	"	12	8.0		7
		1900	1007	6	3	1	R	"	12	8.1		9
		2000	1307	6	3	1	R	"	12	8.2		12
		2100	1607	6	3	1	R	"	12	7.6		16
		2200	1907	6	3	1	R	"	12	7.7		18
		2300	2207	6	3	1	R	"	12	7.3		23
(280)		0000	2506	6	3	1	R	"	12	7.7		26
700T		0100	2807	6	3	1	R	"	12	8.6	0105 - 0110, 0135 - 0145,	30
1991		0201	3111	6	3	1	R	"	12	7.8	out of sync	41
	30	0230	3255	6	3	1	R	"	12	7.6		47
	31	0236	1	6	3	1	R	"	12	7.3	Asper-21 start 41A	0
		0239	14	6	3	1	R	"	12	7.6	change delay chan 2	
	31	0246	49	6	3	1	R	"	12			

SCRIPPS INSTITUTION OF OCEANOGRAPHY
DUAL CHANNEL SEISMIC SYSTEM OPERATIONS LOG

CRUISE: KK81 0626 Leg 4 AREA: Western Pacific PROJECT: Mesozoic Stratigraphy PAGE: 20

TIME	REEL	SHOT	DELAY CHI CH2	LENGTH CHI CH2	RATE CHI CH2	DATA CHI CH2	SOURCE	REP RATE	SHIP SPEED	REMARKS	TES SUM
0300	31	118	6 1	3 10	1 2	R SB	160/SB	12	7.6	Asper-21 end	21
0330		268	6	3	1	R	160	12	7.6		40
0400		218	6	3		R		12	8.6		49
0508		756	6	3	1	R	160	12	8.3		62
0530							80			STB Gun off	
0600		1014	6	3	1	R	"	12	6.3	Mechanical Failure	66
0703		1333	6	3	1	R	"	12	8.0		74
0711		1373	5	3	1	R	"	12			
0800		1613	5	3	1	R	"	12	8.2		80
0812		1675	6	3	1	R	"	12	8.3		
0900		1914	6	3	1	R	"	12	8.2		91
0906		1952								Asper-22 Start	
0912		0	6 0	3 10	1 2	R SB	80/SB	12	8.1	Asper-22 Start	92
0915		25								Noisy Try again	
0918		38	6 0	3 10	1 2	R SB	80/SB	12	8.3	Asper-22 Start	
0925		72								Sea Mount	
0927		74	6	3	1	R	80	12	8.4		92
0937		122	5	3	1	R	"	12	8.3		94
0950		180	4	3	1	R	"	12			
1000		237	3	3	1	R	"	12	8.3		96
1019		332	4	3	1	R	"	12	8.6		97
1029		384	5	3	1	R	"	12	8.3		100
1045		462	6	3	1	R	"	12	8.3		102
1100		536	6	3	1	R	"	12	8.4		103
1200		940	6	3	1	R	"	12	8.4		118
1230	31	988	6	3	1	R	"	12		end reel	

SCRIPPS INSTITUTION OF OCEANOGRAPHY
DUAL CHANNEL SEISMIC SYSTEM OPERATIONS LOG

CRUISE: K1C81 0626 Leg 4 AREA: Western Pacific PROJECT: Mesozoic Stratigraphic PAGE: 21

DATE	REEL	TIME	SHOT	DELAY CHI CH2	LENGTH CHI CH2	RATE CHI CH2	DATA CHI CH2	SOURCE water guns	REP RATE	SHIP SPEED	REMARKS	OBS value
(280) 07	32	1230	989	6	3	1	R	800	12	7.8	BOTH Gun	125
07		1259	1129	6	3	1	R	160	12	7.4		127
07		1400	1437	6	3	1	R	"	12	8.2		131
1981		1500	1736	6	3	1	R	"	12	8.2		133
			1739								Stop for Station	
		2152									bad shot	
	32	2154	1	6	3	1	R	160	12	7.7	end hedge str	0
		2200	28	6	3	1	R	"	12	7.7		0
		2300	328	6	3	1	R	"	12	8.0		3
(281) 800		0000	628	6	3	1	R	"	12	7.8		5
1981		0100	927	6	3	1	R	"	12	7.8	Stop for stations	7
	32	0148	1168	6	3	1	R	"	12	5.3	end reel PG+P7	12
(281)	33	1932	1	6	3	1	R	80	12	8.4	underway one water gun	0
		1932	2	6	3	1	R	"	12	8.2	one bad shot continue	4
		2000	136	6	3	1	R	"	12	8.1	data seems to have more	17
		2100	436	6	3	1	R	"	12	7.7	60 Hz than earlier on portals	19
		2200	736	6	3	1	R	"	12	7.9		24
(282) 900		2305	1064	6	3	1	R	"	12	7.7		31
1981		0000	1336	6	3	1	R	"	12	7.7		37
		0100	1636	6	3	1	R	"	12	7.9		48
		0211	1992	6	3	1	R	"	12	7.7		
	33	0214	2003								end Reel	
											Tape Unit went off line	

SCRIPPS INSTITUTION OF OCEANOGRAPHY

DUAL CHANNEL SEISMIC SYSTEM OPERATIONS LOG

CRUISE: K181 0626 Leg 4 AREA: Western Pacific PROJECT: Mesozoic Stratigraphy PAGE: 22

TIME	REEL	TIME	SHOT	DELAY CHI CH2	LENGTH CHI CH2	RATE CHI CH2	DATA CHI CH2	SOURCE	REP RATE	SHIP SPEED	REMARKS	DESS
(282)	34	0220	1	6	3	1	R	80	12	7.8		0
09		0300	205	6	3	1	R	"	12	7.7		6
04		0401	511	6	3	1	R	"	12	7.7		12
1481		0506	843	6	3	1	R	"	12	8.0		17
		0517	893								300 ci Air Gun +	
		0525	931								SB channel activated	
		0527	1	6	3	1	R	80 + 300 ci				
		0535	44	6	4	1	R	"			offset air gun 1 sec from	
		6537	55	6	4	1	R	"	12	8.0	water gun for comparison	19
		0600	165	6	4	1	R	"			change delay ch1	
		0609	209	5	4	1	R	"	12	8.0	change delay ch1	
		0649	409	6	4	1	R	"			drop ch2, still	
		6700	463	6	4	1	R	"	12	8.0	one second delay between	
	34	0735	638	6	4	1	R	"			A/G + W/G, end reel	25
	35	0736	1	6	4	1	R	SB	12	8.0	start reel, SB 418 1000'	
											still 1 sec delay for air gun	
											Source signature comparisons,	
											circle course	
		0752	86	6	4	1	R	SB	12	7.5	change delay ch2	
		0800	119	6	4	1	R	SB	12	7.8		
		0823	233	6	4	1	R	SB	12	7.2	water gun and air gun	55
											firing together	
		0830	268	6	3	1	R	300 ci AG	12	7.9	end SB, air gun only	
		0835	294	6	3	1	R	80 ci W/G	12	7.6	80 ci water gun only	
		0840	320	6	3	1	R	80 + 300	12	8.1	29 mills static on W/G	
											to sync with A/G	
		0845	345	6	3	1	R	300 ci AG	12	7.2	stop W/G, AG only	
	35	0850	369	6	3	1	R	80 ci W/G	12	7.4	W/G only	

SCRIPPS INSTITUTION OF OCEANOGRAPHY

DUAL CHANNEL SEISMIC SYSTEM OPERATIONS LOG

CRUISE: KC81 0626 Leg 4 AREA: Western Pacific PROJECT: Mesozoic Stratigraphy PAGE: 23

DATE	REEL	TIME	SHOT	DELAY	LENGTH	RATE	DATA	SOURCE	REP	SHIP	REMARKS	SSS
				CHI CH2	CHI CH2	CHI CH2	CHI CH2		RATE	SPEED		ERRORS
(282)	35	0855	395	6	3	1	R	80+300	12	7.6	Water Gun + 300ci Air Gun	70
09		0922	546					300ci AG			Water Gun on Board	
Oct		1000	720	6	3	1	R	"	12	5.0	heavy seas, noisy data	83
1981		1101	1023	6	3	1	R	"	12	10.1		90
		1201	1326	6	3	1	R	"	12	10.2		94
		1338	1809	5	3	1	R	"	12	9.8	change delay	99
		1400	1919	4	3	1	R	"	12	10.0	change delay	
		1415	1916	3	3	1	R	"	12	10.1	change delay, lost some water bottom	
		1427	2054	4				"			change delay	
		1429						"			change out of sync	
		1435	2093	5				"			change delay	
		1440	2121					"			stop, air unit on deck	
(283)	36	1720	1	4	17	1	R	water gun	12	7.6	first shot bad, mod seas	0
10		1727	37	3	3	1		80ci			Sylvania Tablinount	8
Oct		1800	200	2	3	1	R	"	12	7.5	change delay	20
1981		1900	500	2	3	1	R	"	12	7.9		
		1925	625	1	3	1	R	"	12		change delay	
		1934									out of sync, corrected here	
											about 10-15 shots bad	
		2000	800	1	3	1	R	80ci	12	8.0		34
		2100	1100	1	3	1	R	"	12	8.5	part of head 20' tails	53
		2200	1400	1	3	1	R	"	12	8.5		78
		2300	1700	1	3	1	R	"	12	8.1		94
		2322	1811	2	3	1		"	12		change delay	
		2333	1868	3	3	1	R	"	12	7.9		105
(284)		0000	1999	3	3	1	R	"	12	8.0	Change delay	111
11 Oct		0014	2070	4	3	1	R	"	12	8.1		119
1981		0100	2299	4	3	1	R	"	12	8.4		129
	36	0142	2510	3	3	1	R	"	12	8.3	change delay	

SCRIPPS INSTITUTION OF PAEANOGRAPHY

CRUISE: CK81 0626 Leg 4 AREA: Western Pacific

AREA: Western Pacific

PAGE: 24

[illegible]

SCRIPPS INSTITUTION OF

DUAL CHANNEL SEISMIC SYSTEM

CRUISE: K181 0626 Leg 4 AREA: Western Pacific

PROJECT: Mesozoic Stratigraphy

PAGE: 25

TIME	REEL	SHOT	DELAY	LENGTH	RATE	DATA	SOURCE	REP	SHIP	REMARKS	END
CH1	CH2	CH1	CH2	CH1	CH2	CH1	CH2	RATE	SPEED		
1548	37	2581	1	3	1	R	120ci	12	8.1	port cal had 23', ta. 110'	244
1552		2603	1	3	1	R	80 + 120ci			air gun only	260
1557						R	test			air gun and water gun	0
1559		2641	1	3	1	R	80 + 120	12		tests of source, out of sync	14
1616		2675	1	3	1	R	80 + 120	12	7.6	add 20 mi. delay to A/G	30
1619		2736	1			R	"			air gun delay 900 msec	43
1620	37	2743				R	"			source test	71
1621	37	01	1	3	1	R	80 + 120	12	8.2	reset to zero, 41B SB	80
		23		4	2	R	"			start civeeing, 120ci AG	96
				5		R	"			delayed 900 msec, Asper-25	
1634						R	SB			back on course	
1643		109	1	3		R	"			end SB source test, still	
1700		194	1	3		R	80 + 120	12	8.0	900 msec delay	
1728		335	2	3		R	"	12	8.8	remove 900 msec delay	
1738	37	381					"			end reel	
1739	38	1	2	3		R	80 + 120	12	8.6	A/G + W/G, rough weather	
1747		39	2	3		R	"	12	8.4	air gun delay adj. to 16 msec	
1800		104	3	3		R	"	12	8.8	noisy data	
1824		225	3	3		R	"	12	8.3	change delay	
1835		279	4	3		R	"	12	8.5	change delay	
1900		403	5	3		R	"	12	8.3	change delay	
1929		550	4	3		R	"	12		change delay	
2000		705	4	3		R	"	12		change delay	
2016		784	5	3		R	"	12	8.3		
2103		1021	5	3		R	"	12	7.7	change delay	
2130		1154	6	3		R	"	12	8.1		
2200		1304	6	3		R	"	12	7.5	change delay	
2300	38	1604	6	3		R	"	12	7.7		
			6	3		R	"	12	8.0		

SCRIPPS INSTITUTION OF OCEANOGRAPHY DUAL CHANNEL SEISMIC SYSTEM OPERATIONS LOG

CRUISE: KK81 0626 Leg 4 AREA: Western Pacific PROJECT: Mesozoic Stratigraphy PAGE: 26

TIME	REEL	SHOT	DELAY	LENGTH	RATE	DATA	SOURCE	REP	SHIP	REMARKS	DEFS
CH1	CH2	CH1	CH2	CH1	CH2	CH1	CH2	RATE	SPEED		
(205)	38	1904	6	3	1	R	80cc+120cc	12	7.9	80 cc water gun, 120 cc air gun	114
12		2203	6	3	1	R	"	12	7.9		137
021		2504	6	3	1	R	"	12	7.8		159
1991		2800	6	3	1	R	"	12	8.0	delay air gun 900 msec	177
		2810	6	4	1	R	"	12			208
		3100	6	4	1	R	"	12	8.0	End Reel	218
	38	3193	6	4	1						
(205)	39	3194	6	4	1	R	"	12	8.1	Water Gun + Air Gun, air gun	0
		3401	6	4	1	R	"	12	8.1	delay 900 msec	11
		3700	6	4	1	R	"	12	8.1		26
		4000	6	4	1	R	"	12	8.0		40
		0203	6	4	1	R	"	12	8.0		55
		0502	6	4	1	R	"	12	8.0	1015 Water Gun starting up	92
		0803	6	4	1	R	"	12	8.4	Pull in Water Gun	
		1014	6	4	1	R	120cc	12	8.3	Air gun delay 900 msec	118
		1105	6	4	1	R	"	12	8.1		145
		1404	6	4	1	R	"	12	8.4	last shot	161
	39	1704	6	4	1	R	"	12		remove 900 msec delay	
		1757									
	40	1318	1	3	2	R	120cc	12	8.4	Air gun only	1
		1400	6	3	2	R	"	12	8.4		3
		1407	5	3	2	R	"	12		change delay	
		508	5	3	2	R	"	12	8.6		3
		808	5	3	2	R	"	12	8.6		3
		1108	6	3	2	R	"	12	8.3	change delay	5
		1408	6	3	2	R	"	12	8.2		5
	40	1708	6	3	2	R	"	12	8.5		5

Page 26
Page 27

SCRIPPS INSTITUTION OF OCEANOGRAPHY
DUAL CHANNEL SEISMIC SYSTEM OPERATIONS LOG

CRUISE: K1C81 0626 Leg 4 AREA: Western Pacific PROJECT: Mesozoic Stratigraphy PAGE: 27

DATE	REEL	TIME Z	SHOT	DELAY CHI CH2	LENGTH CHI CH2	RATE CHI CH2	DATA CHI CH2	SOURCE	REP RATE	SHIP SPEED	REMARKS	EGS errors
285	40	2000	2008	6	3	2	R	120cc	12	8.3	air gun	5
12		2049	2253	5				"			change delay	
061		2100	2308	5	3	2	R	"	12	8.2		5
1981		2125	2432	4				"				
		2200	2608	4	3	2	R	"	12	8.1		5
		2213	2675	5				"			change delay	
		2300	2908	6	3	2	R	"	12	8.4	change delay	8
286		0000	3208	6	3	2	R	"	12	8.1		8
13		0100	3508	6	3	2	R	"	12	8.0		8
024		0200	3808	6	3	2	R	"	12	8.0		9
1981		0300	0011	6	3	2	R	"	12	7.8	#2:50 lost bottom	10
		0400	0311	6	3	2	R	"	12	7.7		10
		0500	0612	6	3	2	R	"	12	8.1		10
		0600	0911	6	3	2	R	"	12	8.2		12
		0616						80+120			water sun in, no delay guns not firing properly, bed water water, water sun	
		0635	1085								free firing ATC only	
		0638	1100					120cc			ATC gun only	
		0650	1163						12	8.1		13
		0700	1210	6	3	2	R					
		0725	1337	6	3	2	R	120cc	12	8.0	Argon only	14
		0800	1510	6	3	2	R	"	12	8.1		
		0805	1536	5	3	2	R	"	12		change delay	
		0832	1672	4	3	2	R	"	12		change delay	
		0847	1745	3	3	2	R	"	12	8.0	Change delay	15
		0900	1810	3	3	2	R	"	12	7.8		17
		0901	1815	2	3	2	R	"			change delay	
	40	0915	1888	2	3	2	R	"	12	7.6		20

SCRIPPS INSTITUTION OF OCEANOGRAPHY
DUAL CHANNEL SEISMIC SYSTEM OPERATIONS LOG

CRUISE: K/C81 0626 Leg 4 AREA: Western Pacific PROJECT: Mesozoic Stratigraphy PAGE: 28

TIME	REEL	SHOT	DELAY CHI CH2	LENGTH CHI CH2	RATE CHI CH2	DATA CHI CH2	SOURCE	REP RATE	SHIP SPEED	REMARKS	TBS
0915	41	1889	2	3	2	R	120ci	12	8.0	Argun Only	0
0928		1950	3	3	2	R	"	12	7.7	change delay	8
0937		1996	4	3	2	R	"	12		change delay	
0946		2040	5	3	2	R	"	12		change delay	
1000		2110	5	3	2	R	"	12	7.9		13
1012		2169	6	3	2	R	"	12			
1100		2409	6	3	2	R	"	12	8.4		22
1149										Put Water Gun on Side	
1200		2710	6	3	2	R	"	12	4.6		33
1205		2736	6	3	2	R	80-120ci	12	6.3	Water Gun in Water +	40
1224		2828	5	3	2	R	"	12	6.5	Port Air Gun change delay	42
1242		2917	4	3	2	R	"	12	6.5	change delay	
1300		3010	4	3	2	R	"	12	7.8		46
1321		3114	5	3	2	R	"	12	6.8	change delay	53
1400		3309	5	3	2	R	"	12	7.4		63
1416		3388	6	3	2	R	"	12	7.8		65
1454		3578	5	3	2	R	"	12	7.9	change delay	69
1500		3608	5	3	2	R	"	12	8.0		
1504		3628	4	3	2	R	"	12	8.1	change delay	
1526		3739	3	3	2	R	"	12	8.0	change delay	
1543		3824	2	3	2	R	"	12	8.0	change delay	
1600		3908	2	3	2	R	"	12	8.0	change delay	
1611		3966	3	3	2	R	"	12	8.1	change delay	84
1622		4019	4	3	2	R	"	12	7.9	change delay	
1656		92	5	3	2	R	"	12		change delay	
1700		113	5	3	2	R	"	12	7.7	change delay	92
1742		325	5	4	2	R	"	12		change length	
1900		712	5	4	2	R	"	12	8.1		121
2000		1013	5	4	2	R	"	12	7.8		132
2100	41	1313	5	4	2	R	"	12	8.3		152

SCRIPPS INSTITUTION OF OCEANOGRAPHY

DUAL CHANNEL SEISMIC SYSTEM OPERATIONS LOG

CRUISE: KK810626 Leg 4 AREA: Western Pacific

PROJECT: Mesozoic Stratigraphy PAGE: 29

DATE	REEL	TIME	SHOT	DELAY CHI CH2	LENGTH CHI CH2	RATE CHI CH2	DATA CHI CH2	SOURCE W/G-A/G	REP RATE	SHIP SPEED	REMARKS	SSS Errors
286	41	2130	1464	6	3	2	R	80+120	12	8.0	80 W/G 120A/G change delay + length	178
287		2300	1912	5	4	2	R	80+120	12	8.2		184
14		0000	2212	5	4	2	R	"	12	8.3		187
001		0100	2512	5	4	2	R	"	12	8.1	port eel lead 22', tail 14'	
1981			2578								last sync	
			2584								last sync	
		0118	2604								last sync	
			2618								last sync	
			2619								last sync	
			2620								last sync	
		0143	2728									
		0200	2809	5	4	2	R	80+120	12	8.3		187
		0300	3109	5	4	2	R	"	12	8.0		190
	41	0343	3323	5	4	2	R	"	12	8.1	End Read 3 Read Errors	195
(287)	42	0343	3324	5	4	2	R	"	12	8.1		0
		0400	3409	5	4	2	R	"	12	8.0		6
		0500	3709	5	4	2	R	"	12	7.5		10
		0600	4009	5	4	2	R	120ci	12	8.2	Water Gun Bad	15
		0700	0212	5	4	2	R	"	12	7.8		24
		0757	0500	3	4	2	R	"	12	7.7	change delay	28
		0826	0643	2	4	2	R	"	12	7.9	change delay	
		0837	0698	1	4	2	R	"	12		change delay	
		0900	0814	1	4	2	R	"	12	8.1		32
		0914	0883	3	4	2	R	"	12		change delay	
		1000	1114	3	4	2	R	"	12	7.7	change delay change delay	36
		1009	1159	5	4	2	R	"	12			
		1102	1425	5	4	2	R	"	12	7.4		39
	42	1200	1714	5	4	2	R	"	12	6.1		47

SSS
27

SSS
26

SCRIPPS INSTITUTION OF OCEANOGRAPHY

DUAL CHANNEL SEISMIC SYSTEM OPERATIONS LOG

CRUISE: K/C 810626 Leg 4 AREA: Western Pacific PROJECT: Mesozoic Stratigraphy PAGE: 30

LING	REEL	TIME	SHOT	DELAY CHI CH2	LENGTH CHI CH2	RATE CHI CH2	DATA CHI CH2	SOURCE	REP RATE	SHIP SPEED	REMARKS	OBS
(287)	42	1300	2013	5	4	2	R	120ci	12	6.5	Air Gun noisy data	49
		1402	2326	5	4	2	R	"	12	6.6		53
		1500	2614	5	4	2	R	"	12	5.4	port side head 42' tail 21'	59
		1600	2913	3	4	2	R	"	12	6.1	change delay	63
		1700	3213	3	4	2	R	"	12	6.1		69
		1711	3270			stop recording					end recording, pick-up OBS	71
288	43	0905	1	6	3	2	R	120ci	12	9.0	Air Gun	0
1500		1000	279	6	3	2	R	"	12	9.0		4
1581		1100	575	6	3	2	R	"	12	9.0		6
		1200	876	6	3	2	R	"	12	9.0		7
		1300	1175	6	2	stop recording			12	9.0	stop processing RN 1200 air gun quit about 1305z	8
		1420	1337									
		1420	1338	6	3	2	R	8K sparker	12	8.2	sparke only	8
		1500	1536	6	3	2	R	"	12	8.1		8
		1600	1839	6	3	2	R	"	12	8.3		12
		1700	2140	6	3	2	R	"	12	8.6		
		1705	2218							11.0	c/s - stop processing here	
		1716	2218			stop recording					pick-up OBS	
		1848	2219	6	3	2	R	80ci w/g	12	9.0	start to next OBS	
		1854									disconnected, adj. towline depth	
		1902	2291	6	3	2	R	"	12	8.2	re connect, etc. noisy data	12
		2000	2579	6	3	2	R	"	12	9.1		13
		2100	2880	6	3	2	R	"	12	8.8		14
		2200	3178	6	3	2	R	"	12	8.6		14
		2300	3478	6	3	2	R	"	12	8.5		15

SCRIPPS INSTITUTION OF OCEANOGRAPHY

DUAL CHANNEL SEISMIC SYSTEM OPERATIONS LOG

CRUISE: KK 81 0626 Leg 4 AREA: Western Pacific

PROJECT: Mesozoic Stratigraphy PAGE: 31

LINE	REEL	TIME	SHOT	DELAY	LENGTH	RATE	DATA	SOURCE	REP	SHIP	REMARKS	OBS
(DAY)												
288	43	0000	3779	6	3	2	R	8000 W/G	12	8.8	port reel head 23' tail 10'	15
(289)		0046	4010	5				"			change delay	
16		0100	4079	5	3	2	R	"	12	8.8		15
out		0134	154	6							change delay	
1981		0200	283	6	3	2	R	"	12	8.6		17
		0300	582	6	3	2	R	"	12	8.7		12
		0400	882	6	3	2	R	"	12	8.6		17
		0500	1182	6	3	2	R	"	12	9.0		19
	43	0545	1411	6	3	2	R	"	12	7.5	Full Gear for OBS Station End Reel	20
(289)	44	0702	1	6	3	2	R	12000 A/G	12	9.1	Air gun	0
		0802	298	6	3	2	R	"	12	9.0		9
		0902	599	6	3	2	R	"	12	9.1		9
		1000	886	6	3	2	R	"	12	9.2		11
		1100	1186	6	3	2	R	"	12	9.0		14
		1200	1490	6	3	2	R	"	12	9.1		14
		1300	1786	6	3	2	R	"	12	8.5		12
		1400	2087	6	3	2	R	"	12	9.2		18
		1500	2387	6	3	2	R	"	12	8.6		18
		1525	2516		stop recording						PICK-UP OBS	
		1819	2517	6	3	2	R	12000 A/G	12	9.1	air gun	18
		1900	2720	6	3	2	R	"	12	8.9		19
		1930			stop recording						air gun quit, stop processing c/s air gun	
		1949	2963		stop recording				12			
		2005	2964	6	3	2	R	8 KI Sparker	12	9.0	start recording sparker	22
		2103	3259	6	3	2	R	"	12	9.4		22
		2200	3538	6	3	2	R	"	12	9.6		22

SCRIPPS INSTITUTION OF OCEANOGRAPHY DUAL CHANNEL SEISMIC SYSTEM OPERATIONS LOG

CRUISE: K181 0626 Leg 4 AREA: Western Pacific PROJECT: Mesozoic Stratigraphy PAGE: 32

TIME DAY	REEL	TIME	SHOT	DELAY CH1 CH2	LENGTH CH1 CH2	RATE CH1 CH2	DATA CH1 CH2	SOURCE	REP RATE	SHIP SPEED	REMARKS	OBS errors
	44	2300	3838	6	3	2	R	8KJ sparker	12	9.2		23
		2334	4010	6	3	2	R	1200c	12		Air Gun on, sparker off	27
290		0000	42	6	3	2	R	"	12	10.0		27
17		0100	341	6	3	2	R	"	12	9.7		31
Oct		0200	642	6	3	2	R	"	12	9.7		33
1981		0300	942	6	3	2	R	"	12	10.4		34
		0400	1241	6	3	2	R	"	12	9.4		38
	44	0500	1541	6	3	2	R	"	12	9.6		38
		0527	1676	6	3	2	R	"	12	9.5	Pull Sparker OBS Station	38
(290)	45	0755	1	6	3	2	R	1200c	12	8.7	Air Gun	0
17 Oct		0904	0349	6	3	2	R	"	12	9.3		3
1981		1000	0526	6	3	2	R	"	12	9.6		3
		1114	998	6	3	2	R	"	12	9.0		3
		1200	1226	6	3	2	R	"	12	9.1		3
		1302	1540	6	3	2	R	"	12	9.4		3
		1315	1575	6	3	2	R	"	12	6.0	Air Gun Down	4
		1405	1852	6	3	2	R	8KJ sparker	12	8.2	Sparke out	4
		1500	2126	6	3	2	R	"	12	9.1	noisy data	4
		1601	2434	6	3	2	R	"	12	8.3	"	4
		1700	2726	6	3	2	R	"	12	8.7	"	5
		1800	3026	6	3	2	R	"	12	9.1		5
		1901	3335	6	3	2	R	"	12	8.8		6
		2000	3626	6	3	2	R	"	12	7.9		6
		2100	3926	6	3	2	R	"	12	8.7		8
		2200	130	6	3	2	R	"	12	9.7		8
		2300	430	6	3	2	R	"	12	9.0		8
291	45	0000	730	6	3	2	R	"	12	9.0		9
		0100	1030	6	3	2	R	"	12	8.0		10

SCRIPPS INSTITUTION OF OCEANOGRAPHY
DUAL CHANNEL SEISMIC SYSTEM OPERATIONS LOG

CRUISE: KK81 0626 Leg 4 AREA: Western Pacific PROJECT: Mesozoic Stratigraphy PAGE: 33

TIME DAY	REEL	TIME	SHOT	DELAY CHI CH2	LENGTH CHI CH2	RATE CHI CH2	DATA CHI CH2	SOURCE	REP RATE	SHIP SPEED	REMARKS	OBS
291	45	0202	1344	6	3	2	R	8 KJ Sparker	12	8.2	rough seas, poor SN	below
18		0300	1630	6	3	2	R	"	12	8.4		
Oct	45	0355									end reel	
1981	46	0355	1920	6	3	2	R	8 KJ Sparker	12		start reel	21
		0500	2230	6	3	2	R	"	12	9.0	Noise in Data	23
		0600	2530	6	3	2	R	"	12	8.7		25
		0700	2830	6	3	2	R	"	12	9.5		27
		0800	3130	6	3	2	R	"	12	9.0		27
		0900	3430	6	3	2	R	"	12	8.5		32
		1015	3808	6	2	2	R	"	12	9.0		33
		1100	4030	6	3	2	R	"	12	9.0		33
		1200	0233	6	3	2	R	"	12	8.8		34
		1300	0533	6	3	2	R	"	12	8.7		35
		~1335						"	12		out of sync	
		1356	818					"	12		back in sync	
		1400	834	6	3	2	R	"	12	8.3		38
		1500	1133	6	3	2	R	"	12	9.3		41
		1600	1433	6	3	2	R	"	12	8.5		45
		1700	1733	6	3	2	R	"	12	9.2		47
		1800	2033	5	3	2	R	"	12	10.3	change delay, with	48
		1900	2333	5	3	2	R	"	12	10.5	following seas, shallow	50
		1931	2492	4	3	2	R	"		8.6	streamer, noisy data	51
		2000	2634	3	3	2	R	"	12	9.1	change delay	51
		2100	2933	3	3	2	R	"	12	9.1		55
		2200	3233	4	3	2	R	"	12	9.2	change delay	
		2238	3428	3	3	2	R	"			change delay	
		2301	3543	2	3	2	R	"	12	9.0	change delay	58
	46	2322	3645	1	3	2	R	"	12	8.6	change delay, lost bottom	
		2335	3711	2	3	2	R	"	12	8.7	change delay	

SCRIPPS INSTITUTION OF OCEANOGRAPHY DUAL CHANNEL SEISMIC SYSTEM OPERATIONS LOG

CRUISE: KK81 0626 Leg 4 AREA: Western Pacific PROJECT: Mesozoic Stratigraphy PAGE: 34

LINE	REEL	TIME	SHOT	DELAY CHI CH2	LENGTH CHI CH2	RATE CHI CH2	DATA CHI CH2	SOURCE	REP RATE	SHIP SPEED	REMARKS	OBS
Day												
291	46	2348	3775	3	3	2	R	8KJ Sparker	12	8.8	change delay	58
292		0000	3834	3	3	2	R	"	12			
19		0011	3893	4				"	12		change delay	
007	46	0029	3978	4	3	2	R	"	12		last shot	60
1981												
	47	0029	1	4	3	2	R	8KJ Sparker	12	8.8	first shot	0
		0033	21	5				"			change delay	
		0102	167	5	3	2	R	"	12	9.4		1
		0200	0454	5	3	2	R	"	12	8.0		4
		0300	0756	5	3	2	R	"	12	8.1		5
		0400	1054	5	3	2	R	"	12	8.0		7
		0500	1355	5	3	2	R	"	12	9.0		8
		0600	1654	5	3	2	R	"	12	8.5		8
		0700	1954	5	3	2	R	"	12	8.6		8
		0800	2254	5	3	2	R	"	12	8.7		8
		0836	2434	5	3	2	R	8KJ+1200	12	8.7	Sparker + Air Gun	
		0900	2554	5	3	2	R	"	12	8.3		8
		1000	2854	5	3	2	R	"	12	8.7		8
		1100	3155	5	3	2	R	"	12	8.9		11
		1200	3455	5	3	2	R	"	12	8.6		11
		1300	3755	5	3	2	R	"	12	8.7		11
		1400	4055	5	3	2	R	"	12	8.8		11
		1500	259	5	3	2	R	"	12	8.8		12
		1600	559	5	3	2	R	"	12	8.8		12
		1615	635		stop	recording		"	12	9.3	pull gear, pick-up OBS	
		1921	636	6	3	2	R	1200	12	8.0	air gun	12
		2000	828	6	3	2	R	"	12	9.3	portool head 17' tail 6'	12
		2050	1								air gun quit, stop processing	
		2110	1178			stop recording					huc	

SCRIPPS INSTITUTION OF OCEANOGRAPHY

DUAL CHANNEL SEISMIC SYSTEM OPERATIONS LOG

CRUISE: KK81 0626 Leg 4 AREA: Western Pacific PROJECT: Mesozoic Stratigraphy PAGE: 38

DATE	REEL	TIME	SHOT	DELAY CHI CH2	LENGTH CHI CH2	RATE CHI CH2	DATA CHI CH2	SOURCE	REP RATE	SHIP SPEED	REMARKS	OBS errors
292	47	2121	1179	6	3	2	R	8KJ Spark	12	8.8		15
		2200	1375	6	3	2	R	"	12	9.0		16
	47	2300	1675	6	3	2	R	"	12	9.1		
	48	2330						"			and reel 47	
293		0000	1975	6	3	2	R	8KJ Spark	12	9.0	begin reel 48	35
20		0100	2274	6	3	2	R	"	12	8.9		60
Oct		0215	2649	6	3	2	R	"	12	8.8		89
1981		0300	2874	6	3	2	R	"	12	8.6		98
		0400	3174	6	3	2	R	"	12	9.7		114
		0445	3401	6	3	2	R	"	12		Pull Gear for OBS	128
		0700	3402	6	3	2	R	8KJ Spark	12	8.5		128
		0800	3702	6	3	2	R	"	12	9.2		147
		0900	3997	6	3	2	R	"	12	8.3		160
		1000	0202	6	3	2	R	"	12	8.5		176
		1100	0501	6	3	2	R	"	12	8.5		193
		1200	0802	6	3	2	R	"	12	9.4		208
		1300	1102	6	3	2	R	"	12	9.6		223
		1400	1402	6	3	2	R	"	12	10.1		237
		1425	1530					"	12		pull gear OBS pick-up	
		1754	1531	6	3	2	R	8KJ Spark	12	8.9	underway to next OBS	246
		1900	1857	6	3	2	R	"	12	9.3		246
		2000	2157	6	3	2	R	"	12	8.1		287
		2100	2457	6	3	2	R	"	12	8.2		305
		2200	2757	6	3	2	R	"	12	8.0		323
		2300	3057	6	3	2	R	"	12	7.8		344

SCRIPPS INSTITUTION OF OCEANOGRAPHY

DUAL CHANNEL SEISMIC SYSTEM OPERATIONS LOG

CRUISE: K181 0626 Leg 4 AREA: Western Pacific PROJECT: Mesozoic Stratigraphy PAGE: 36

LINE DATE	REEL	TIME	SHOT	DELAY CHI CH2	LENGTH CHI CH2	RATE CHI CH2	DATA CHI CH2	SOURCE	REP RATE	SHIP SPEED	REMARKS	GBS errors
294	48	0000	3357	6	3	2	R	8KJ Sparker	12	8.2	port sel, head 17', tail 6'	364
21		0100	3657	6	3	2	R	"	12	8.1	60 Hz noise	393
Oct		0200	3957	6	3	2	R	"	12	8.3		415
1981		0204	3977	6	3	2	R				End of Reel	417
	49	0304	3978	6	3	2	R	8KJ Sparker	12	8.1	Start Reel	0
		0244	82	6	3	2	R	8KJ+120ci	12	8.5	Air Gun + Sparker	7
		0301	0166	6	3	2	R	"	12			2
		0302	0175	5	3	2	R	"	12		change delay	
		0330	310	6	3	2	R	"	12		change delay	9
		0400	0461	6	3	2	R	"	12	8.0		10
		0434	0633	6	3	2	R	"	12		Pull Gear for OBS	
		0723	0634	6	3	2	R	120ci	12	7.5	Bad Shot - Air Gun	10
		0730	0664	6	3	2	R	"	12	7.8	Under Way from Station	10
		0800	0814	6	3	2	R	"	12	8.0		11
		0900	1115	6	3	2	R	"	12	7.0		15
		1000	1415	6	3	2	R	"	12	8.1		15
		1100	1714	6	3	2	R	"	12	8.1		17
		1200	2014	6	3	2	R	"	12	8.2		19
		1300	2315	6	3	2	R	"	12	9.3		25
		1400	2615	6	3	2	R	"	12	9.2		31
		1438	2809								pull gear, pick-up OBS	
		1703	2810	6	3	2	R	120ci AG	12	7.6	underway to next OBS	38
		1800	3093	6	3	2	R	"	12	8.0	port sel 17' head, 10' tail	44
		1900	3393	6	3	2	R	"	12	7.7		48
		2000	3693	6	3	2	R	"	12	7.8		51
		2100	3993	6	3	2	R	"	12	7.8		52
	49	2200	197	6	3	2	R	"	12	7.6		

SCRIPPS INSTITUTION OF

DUAL CHANNEL SEISMIC SYSTEM

CRUISE: KK81 0626 Leg 4 AREA: Western Pacific PROJECT: Mesozoic Stratigraphy PAGE: 37

[illegible]

[illegible]

SCRIPPS INSTITUTION OF OCEANOGRAPHY.
DUAL CHANNEL SEISMIC SYSTEM OPERATIONS LOG

PROJECT: Mesozoic Stratigraphy PAGE: 39

CRUISE: KK81 0626 Leg 4

CRUISE: KK81 0626 Leg 4

AREA: Western Pacific.

CRUISE: KK81 0626 Leg 4

AREA: Western Pacific.

LEAF	REEL	TIME	SHOT	DELAY CHI CHZ	LENGTH CHI CHZ	RATE CHI CHZ	DATA CHI CHZ	SOURCE	REP RATE	SHIP SPEED	REMARKS	OBS
296	54	0357	1	6	3	1	R	8KJ Sparker	12	7.5	Sparker	0
23 Oct		0500	316	6	3	1	R	"	12	8.0		32
1981		0600	615	6	3	1	R	"	12	7.9	tape unloaded	43
	54	0610										
	55	0619	1	6	3	2	R	8KJ Sparker	12	8.1		0
		0700	205	6	3	2	R	"	12	8.1		13
		0800	505	6	3	2	R	"	12	8.1		14
		0900	805	6	3	2	R	"	12	8.4		15
		0958	1097	6	3	2	R	1200 A/C	12	6.0	Air Gun, 120 si	16
		1000	1106	6	3	2	R	"	12	8.0		16
		1100	1405	6	3	2	R	"	12	8.4		17
		1201	1713	6	3	2	R	"	12	8.5		18
		1300	2006	6	3	2	R	"	12	8.3		18
		1400	2306	6	3	2	R	"	12	8.5		20
		1500	2606	6	3	2	R	"	12	8.7		21
		1600	2906	6	3	2	R	"	12	8.2		22
		1700	3206	6	3	2	R	"	12	8.0		27
		1800	3506	6	3	2	R	"	12	8.2		34
		1900	3806	6	3	2	R	"	12	8.5		38
		2000	10	6	3	2	R	"	12	7.6		75
		2100	310	6	3	2	R	"	12	7.7		97
		2200	610	6	3	2	R	"	12	7.0		108
		2254	831					"			lost timing sync	
		2258	883					"			lost sync	
		2300	889					"			lost sync	
		2300	908					"				
297		0000	1208	6	3	2	R	1200 A/C	12	7.2		122
24		0100	1508	6	3	2	R	"	12	7.0		141
Oct	55	0104	1530	6	3	2	R	"	12	7.6	lost sync	176

SCRIPPS INSTITUTION OF OCEANOGRAPHY
DUAL CHANNEL SEISMIC SYSTEM OPERATIONS LOG

CRUISE: KIC81 0626 Leg 4 AREA: Western Pacific PROJECT: Mesozoic Stratigraphy PAGE: 40

TIME DATE	REEL	TIME	SHOT	DELAY CHI CH2	LENGTH CHI CH2	RATE CHI CH2	DATA CHI CH2	SOURCE	REP RATE	SHIP SPEED	REMARKS	OFF TAPE ERROR COUNT
297	55	0115	1585	6	3	2	R	120ci A/G	12		lost sync	199
24		0141	1714					"	12	8.0	lost sync	241
Oct		0200	1808	6	3	2	R	"	12	8.0	end reel	0
1981	55	0214	1877	6	3	2	R	"	12	8.0	begin reel	8
	56	0214	1	6	3	2	R	"	12	7.6		12
		0300	228	6	3	2	R	"	12	7.6		22
		0400	528	6	3	2	R	"	12	8.4		27
		0501	836	6	3	2	R	"	12	7.9		32
		0600	1128	6	3	2	R	"	12	8.4		38
		0706	1401	6	3	2	R	"	12	8.2		42
		0800	1731	6	3	2	R	"	12	9.0	change delay	44
		0830	1899	5	3	2	R	"	12	8.1		50
		0900	2028	5	3	2	R	"	12	8.6		55
		1000	2328	5	3	2	R	"	12	8.7		56
		1100	2628	5	3	2	R	"	12	8.5	change delay	58
		1126	2758	4	3	2	R	"	12	9.0		59
		1200	2929	4	3	2	R	"	12	8.6	change delay	59
		1238	3119	3	3	2	R	"	12	8.4		60
		1300	3228	3	3	2	R	"	12	8.6	change delay	
		1317	3314	2	3	2	R	"	12	5.0	change delay	
		1343	3447	3	3	2	R	"			change delay, c/s	
			35									
		1345	3456					120 AG+80 W/G			plus water sun, remove	
		1349	3475					120ci A/G		8.0	w/o, still free fires	
		1355	3506					"			c/s back to normal	
		1359	3523					85T sparker			sparker on	
		1400	3528	3	3	2	R	"	12	7.8		62
		1422	3639		4	2	R	"			change length	
		1500	3828	3	4	2	R	"	12	7.8		69
	56	1600	32	3	4	2	R	"	12	8.0		83

SCRIPPS INSTITUTION OF OCEANOGRAPHY

DUAL CHANNEL SEISMIC SYSTEM OPERATIONS LOG

CRUISE: K1C81 0626 Leg 4 AREA: Western Pacific PROJECT: Mesozoic Stratigraphy PAGE: 41

DATE	REEL	TIME	SHOT	DELAY	LENGTH	RATE	DATA	SOURCE	REP	SHIP	REMARKS	TAPE
				CH1 CH2	CH1 CH2	CH1 CH2	CH1 CH2			SPEED		ERRORS COUNT
297	56	1624	153	1	4	Z	R	8KT Sparker	12	7.6	change delay	86
24		1700	333	1	4	Z	R	"	12			
Oct		1717	418	3	4	Z	R	"	12	7.5	change delay	92
1981		1807	667	3	4	Z	R	"	12	7.8		101
		1900	933	3	4	Z	R	"	12		change delay	
		1947	1170	4	3	Z	R	"	12	8.2		161
		2000	1233	5	3	Z	R	1200 A/G	12	8.3	stop sparker, start air gun	
		2040	1434	5	3	Z	R	"	12		lost sync ~ 5 minutes	
		2045	1530	5	3	Z	R	"	12	8.0		289
	56	2100	1618					"			end and	348
	57	2118	1					1200 A/G	12	7.9	begin and	0
		2200	211	5	3	Z	R	"	"	7.8		1
		2300	511	5	3	Z	R	"	"	7.3		4
298		0000	811	5	3	Z	R	"	"	6.9		4
25 Oct		0102	1121	5	3	Z	R	"	"	7.0		4
1981		0200	1411	5	3	Z	R	"	"	8.0		4
		0300	1712	5	3	Z	R	"	12	7.8		4
		0345	1939	4	3	Z	R	"	12	7.8	change delay	5
		0350	1950	4	3	Z	R	8KT Sparker	12	7.7	Sparker	6
		0400	2012	4	3	Z	R	"	12	7.7		8
		0434	2282	3	3	Z	R	"	12	8.1	change delay	9
		0500	2310	3	3	Z	R	"	12	8.2		9
		0517	2397	3	3	Z	R	"	12	8.4	change delay	10
		0600	2611	3	3	Z	R	"	12	8.4	change delay	10
		0655	2887	4	3	Z	R	"	12	8.5	change delay	11
		0700	2910	4	3	Z	R	"	12	8.6	Air Gun	11
		0704	2931	4	3	Z	R	1200 A/G	12	8.6		11
		0800	3210	4	3	Z	R	"	12	9.4		11
		0817	3297	5	3	Z	R	"	12	9.5	change delay	12

SCRIPPS INSTITUTION OF SEISMOGRAPHY
DUAL CHANNEL SEISMIC SYSTEM OPERATIONS LOG

DUAL CHANNEL SEISMIC SYSTEM OPERATIONS LOG

AREA: Western Pacific

CRUISE: KK81 0626 LES4

PROJECT: Mesozoic stratigraphy page: 42

TIME	REEL	TIME	SHOT	DELAY	LENGTH	RATE	DATA	SOURCE	REP	SHIP	REMARKS
				CHI	CH2	CHI	CH2		RATE	SPEED	
298	57	0900	3510	5	3	2	R	1200	12	8.4	Air Gun
250		1000	3611	5	3	2	R	"	"	8.6	
1281		1100	0014	5	3	2	R	"	12	8.5	
		1200	0314	5	3	2	R	"	12	8.0	
		1300	615	5	3	2	R	"	12	8.1	
		1400	915	5	3	2	R	"	12	8.3	
		1416	996	4				"			change delay
		1500	1215	4			R	"	12	9.1	
		1600	1516					"			
				END	KK81	0626	Leg 4	Majuro			

SCRIPPS INSTITUTION OF PAEDOGRAPHY

PROJECT:

CRUISE:

[illegible]

WP

SB7

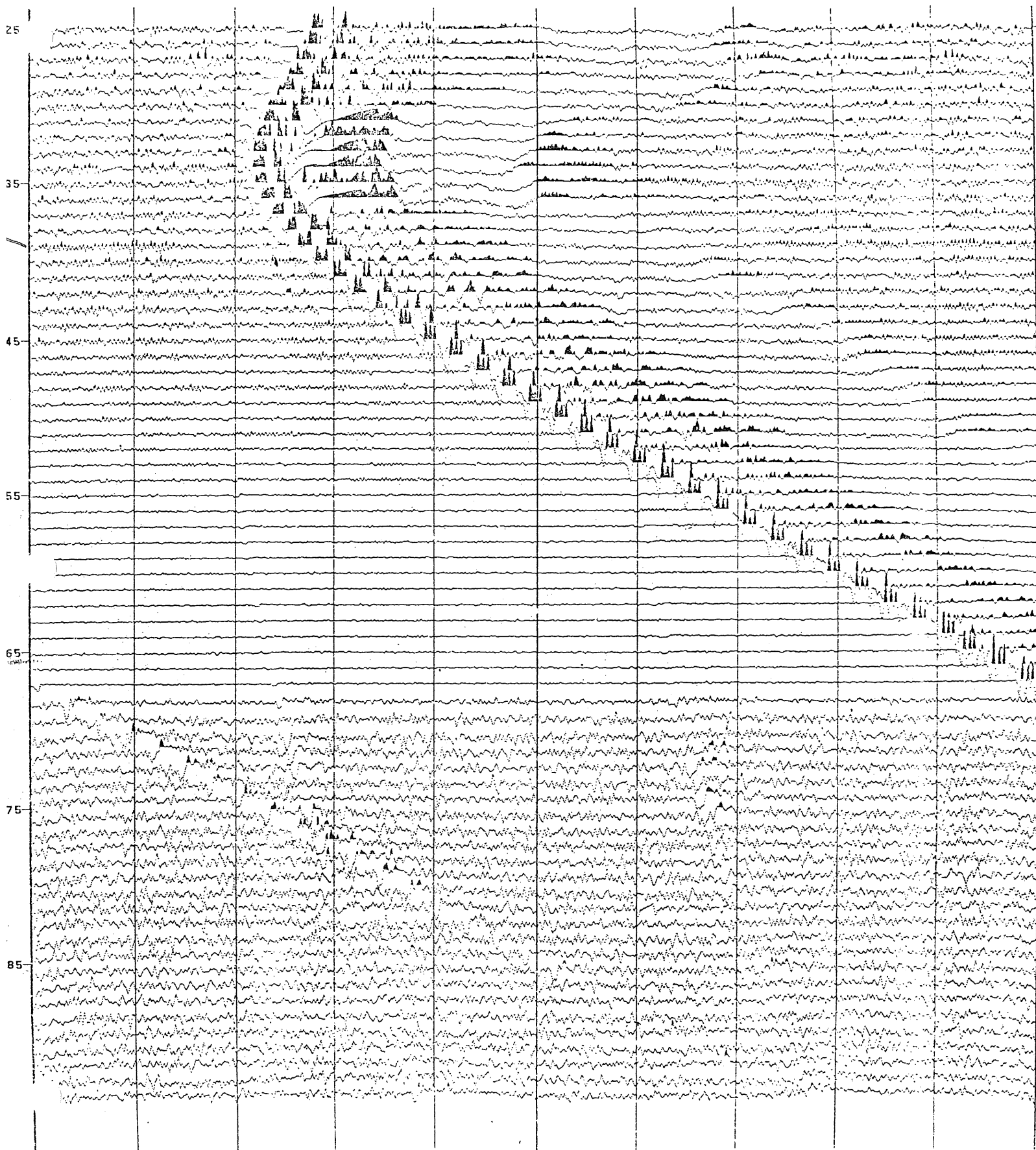
tape 4

PASS

5

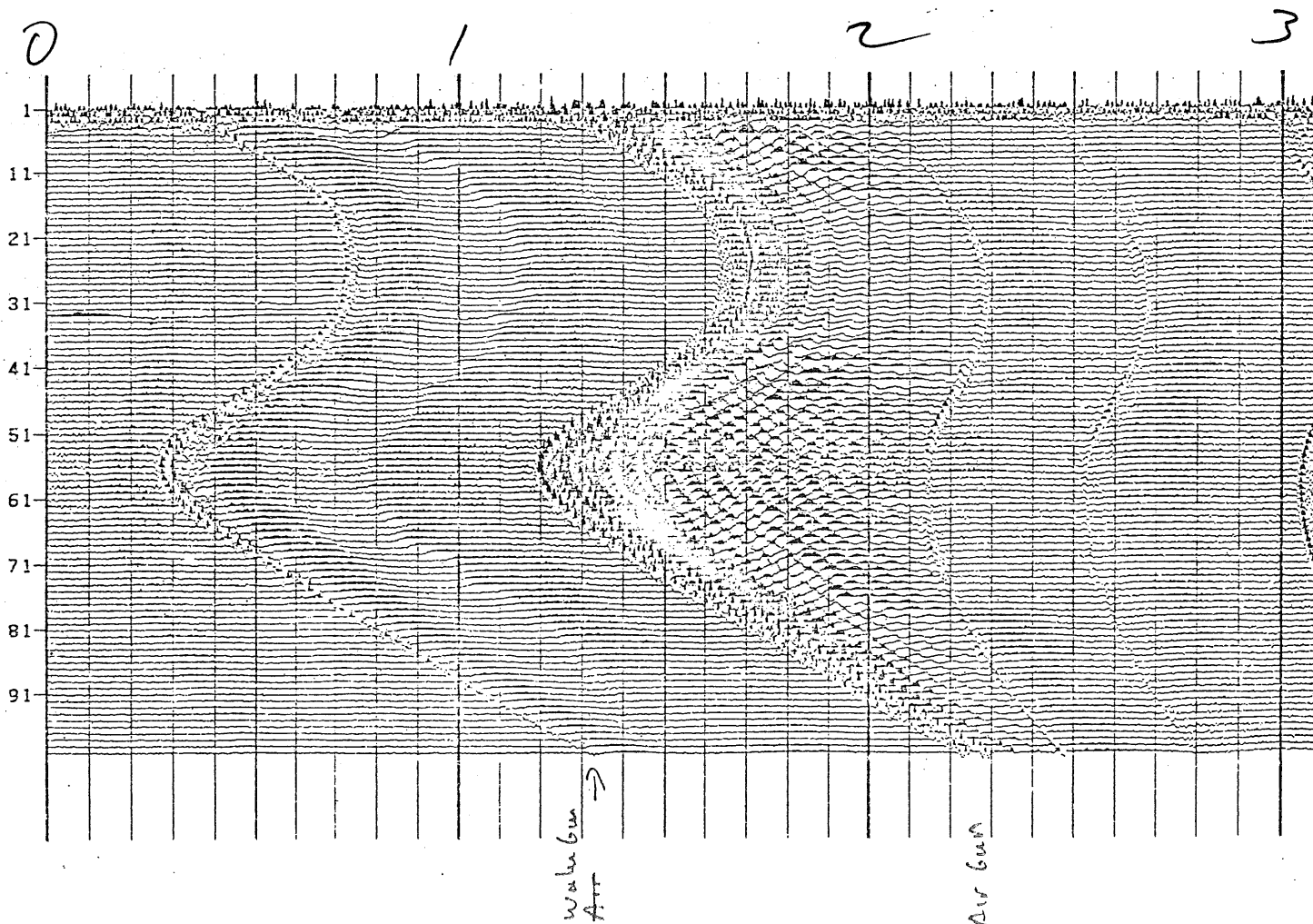
300

1/2 mill data



C 5
 C 6
 C 7
 C 8
 C 9
 C10
 C11
 C12
 C13
 C14
 C15
 C16
 C17
 C18
 C19
 C20
 C21
 C22
 C23
 C24
 C25
 C26
 C27
 C28
 C29
 C30
 C31
 C32
 C33 DATA SHOT ON 11OCT.1981 AT 1621Z
 C34 FIRST TRACE IS 2000 SAMPLES LONG, SI= 0.00200, DELAY= 0.001
 C35 PLOT PARAMETERS:
 C36 IREELN 60 FIS 1 LIS 100 ISINC 1 FTR 2 LTR 2 TRINC 1
 C37 FRP 0 LRP 0 RPINC 1 STIME 0.001 ETIME 5.001 POL 1 SPACEI 0
 C38 AGCWL 0.000 ANNTYP 2 ANNINC 10 FTAG 1 TAGINC 10 FSPACE 0 DECIMF 1
 C39 NSPACE 0 TRPIN 20.00 VSCALE 3.125 DEF 0.100 RMULT -1.000000
 C40 PASS 0.00 0.00 FILLEN 0.160 PCTFIL 100.0 BIAS 0. DIR RTL

WP SB Tape 37



PLOTTED ON WED, 22 SEP 1982 AT 18:02:01
 C 1 UNIVERSITY OF CALIFORNIA SCRIPPS INSTITUTION OF OCEANOGRAPHY
 C 2 LINE 0001
 C 3 REEL NO 0035 DAY 2280 YEAR 1981
 C 4 DUAL CHANNEL SEISMIC RECORDING SYSTEM
 C 5 TRACE 1 = REFLECTION TRACE 2 = SONOBUOY
 C 6 WESTERN PACIFIC MESOZOIC STRATIGRAPHY HIG KANA KEOKI GUAM TO MAJURO
 C 7
 C 8
 C 9
 C10
 C11
 C12
 C13
 C14
 C15
 C16
 C17
 C18
 C19
 C20
 C21
 C22
 C23
 C24
 C25
 C26
 C27
 C28
 C29
 C30
 C31
 C32

C33 DATA SHOT ON 9OCT.1981 AT 738Z
 C34 FIRST TRACE IS 5000 SAMPLES LONG, SI= 0.00200, DELAY= 0.001
 C35 PLOT PARAMETERS:
 C36 IREELN 4 FIS 11 LIS 85 ISINC 1 FTR 2 LTR 2 TRINC 1
 C37 FRP 0 LRP 0 RPINC 1 STIME 0.001 ETIME 5.001 POL 1 SPACEI 0
 C38 AGCWL 0.000 ANNTYP 2 ANNINC 10 FTAG 1 TAGINC 10 FSPACE 0 DECIMF 1
 C39 NSPACE 0 TRPIN 20.00 VSCALE 3.125 DEF 0.100 RMULT -1.000000
 C40 PASS 0.00 0.00 FILLEN 0.160 PCTFIL 100.0 BIAS 0. DIR RTL

W.P. SB Tape 35

