

CRUISE: IG 23-2

INSTRUMENT: Maggie

BEGIN DATE: 14 July 0235 (Z)

END DATE: \_\_\_\_\_ (Z)

BEG. LAT: \_\_\_\_\_

END. LAT. \_\_\_\_\_ LONG. \_\_\_\_\_

REMARKS (SWEEP SPEED, ETC.) \_\_\_\_\_

~~0230Z 49206 250° 700 RPM~~



c/c 25°  
0027Z

-49254

0200Z 1-14-77

24° @ 700 RPM

-49332

0130Z 1-14-77

24° @ 700 RPM

0103 c/c 24°  
c/s 700 RPM

49368

0100Z 1-14-77



238° @ 800 RPM.

0030Z 1-14-77

238° @ 800 RPM

49384

0004Z  
C/C 238° C/S 800 RPM

0000Z 1-14-77

225° @ 900 RPM

49375



49385. 2330Z. 1-13-77

225° @ 900 RPM.

40399

2300Z. 1-13-77

225° @ 900 RPM

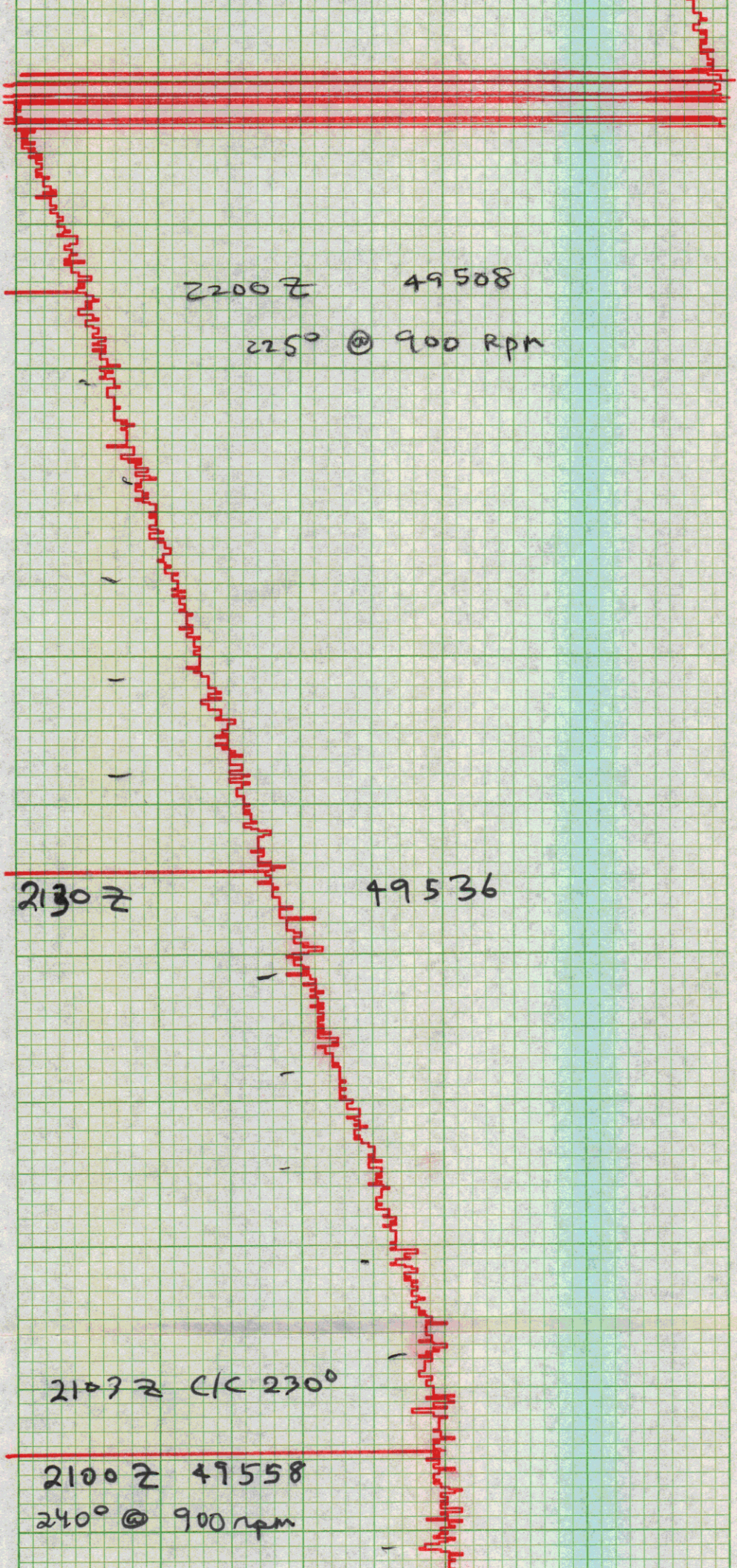
49439

2230Z. 1-13-77.

225° @ 900 RPM

49481







2030Z 49570  
240° @ 900 rpm

steady c/ 240°

2000Z 49562

Begin slow turn  
to 240°

1948Z

c/c 335°

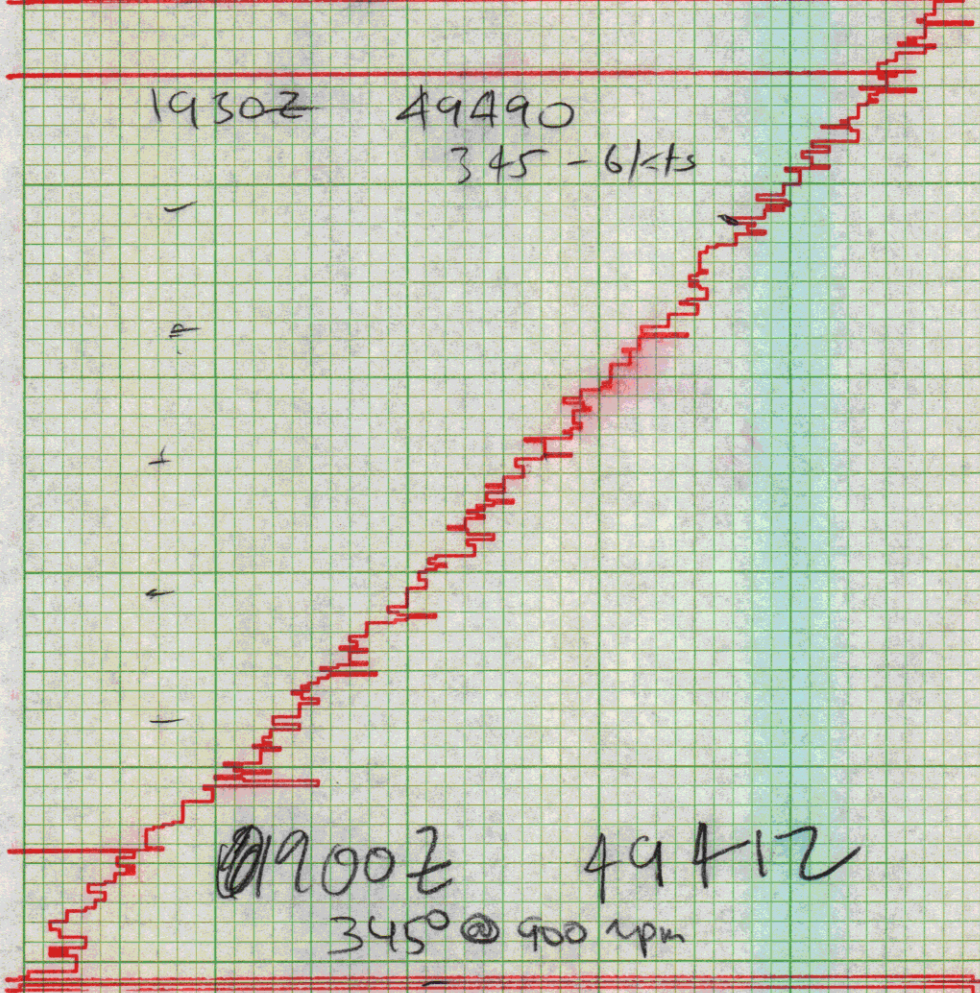
1955Z



19302

49490

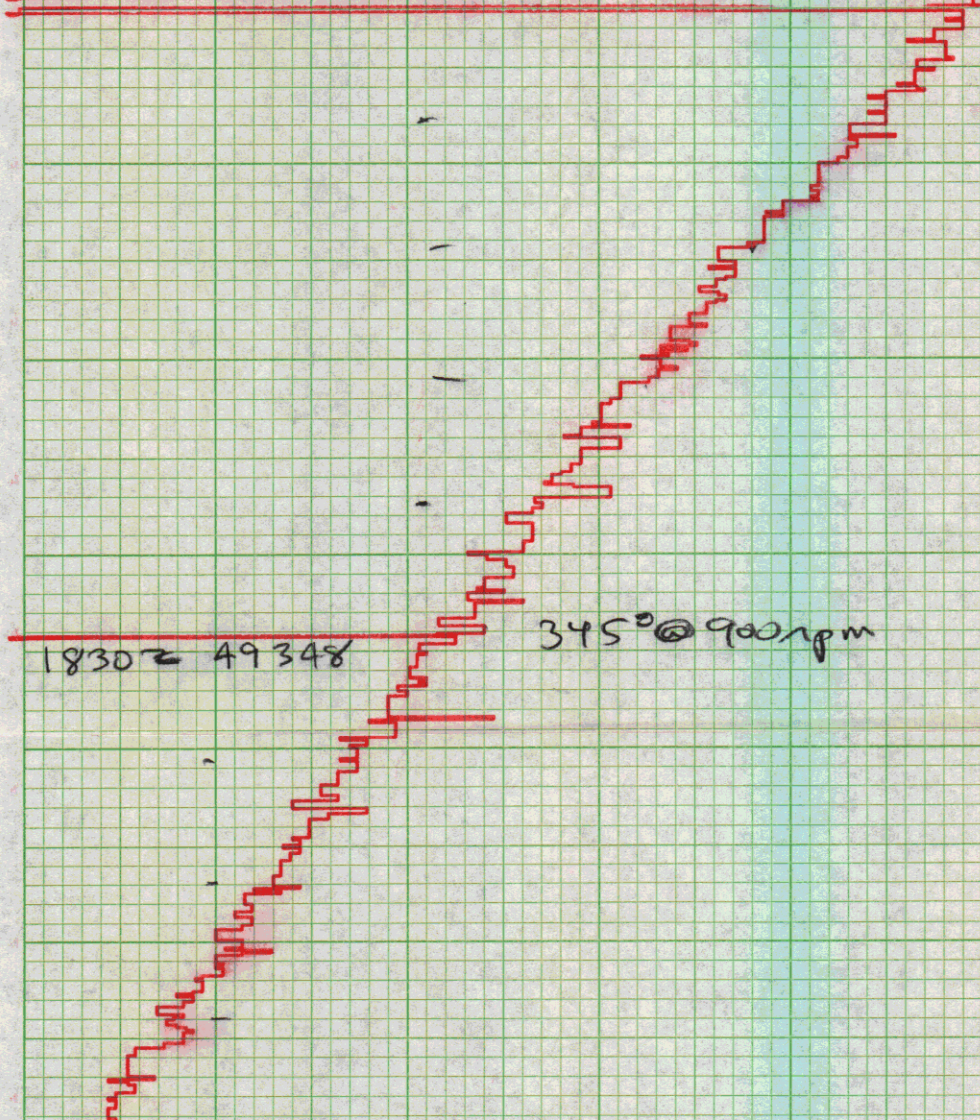
345 - 6/13



19002

49412

345° @ 900 rpm



18302

49348

345° @ 900 rpm



1800 Z 49293  
345° @ 900 rpm

1735 Z c/r 345°  
c/s 900 RPM

1730 Z

1700 Z

13 JAN 77

49217 335° 950 RPM



1630Z 49276 335° 950RPM  
13 JAN 77

c/c 335°  
1616Z

1600Z 49156 326°  
950RPM

IG23-2

13 JAN 77

1600Z 49183 326° 950RPM



15302  
- c/e326 c/s 950

49203 1500Z 135ANT7 323° 850 RPM

1430Z 49152  
323° 850 RPM

↗ steady on 323° 1416Z



135AN77

1400±  
49095

C/C 323° slow turn  
850 RPM

1330Z 1-13-77

070° @ 850 RPM

49077

1300Z 1-13-77

072° @ 850 RPM

- 1303 C/C 070°

49061



1230Z 1-13-77

072 @ 850 RPM

49044

1200Z 1-13-77

072 @ 850 RPM

49035

1130Z 1-13-77

072 @ 850 RPM

49037



1100 Z. 1-13-77

072° @ 850 RPM

49043

1030 Z 13 Jan 77

072° @ 850 RPM  
(5 kts)

49057

1007 Z C/C 072°



1000Z 49071  
13 APR 77

075° 5Kts

0930Z 49076  
075° @ 5Kts.

0905Z clc 075°

0900Z 49089  
080° @ 850 rpm



0830 Z 49102  
080° @ 850 rpm

- 0820 C/C 080°

0800 Z 49117  
070° @ 850 rpm

0730 Z

49124 070° @ 850 rpm



C/S 850 RPM C/C 070°

0700 Z 49108

065-5 kts

060° @ 900 rpm

0630 Z

49081

0620 Z C/S 900 rpm



0600Z

49068

060° 850 RPM  
13 JAN 77

0530Z

49063

850 RPM 060°

c/c 060° 0502Z

0500Z

49026

050°

850 RPM

13 JAN 77



L0430Z

050°

48971

850 RPM

13 JAN 77

C/C 050° 0413Z  
C/S 850 RPM

0400Z 48928

045°  
1000 RPM

0330Z 48903

0320Z

C/S 1000 RPM



0300Z 48889

045°  
950 RPM

13 JAN 77

0230Z 48881

045° 950 RPM

c/c 045°

0203Z c/s 950 RPM

48876 . 0200Z . 1-13-77

045° 950 RPM



48875. 0130Z. 1-13-77  
050 @ 850 RPM

48879. 0100Z 1-13-77  
050 @ 850 RPM



48886. 0030Z. 1-13-77

05° @ 850 RPM

48883. 0000Z. 1-13-77

05° @ 850 RPM

C/S 850 RPM 2343Z

~~2320Z~~ 48883

2326Z

05° @ 700 RPM

(1800Z 48897 off

12 JAN '77

030° @ 825 rpm



Steady on 030°

1730 Z

48877

C/C 020°

825 RPM

12 JAN 77

1700 Z

48867

045°

825 RPM



1630 Z 045° 825 RPM  
48865

1600 Z 045° 825 RPM  
48867 12 JAN 77

C/S 1538 Z  
825 RPM

1530 Z 48876  
045° 750 RPM

C/S 1517 Z  
850 RPM



S/C 045°  
1505 Z

1500 Z 48885 050°  
12 JAN 77 775 RPM

1430 Z 48892  
050° 775° RPM

1400 Z 48901 12 JAN 050° 775 RPM



→ C/c 050 1340 Z

→ 48903. 1330 Z. C/S 775 RPM 040°

→ 48906. 1300 Z. 040° (800 RPM)  
C/S 800 RPM. 1259 Z

1230 Z

12 Jan 77

48902



IG 23-2 040' @ 77 RPM (2.5 lbs)

48891-1200Z. 1-12-77

40 @ 775 RPM

48879. 1130Z. 1-12-77

040 @ 775 RPM



48861 - 1100Z 1-12-77  
040° @ 775 RPM

48843 - 1030Z 1-12-77  
044° - 775 RPM

48830  
1000Z 1-12-77 044° @ 775 RPM



09302 48816 0400@775rpm

09002 48804 0400@775rpm

0830 48800



0810 C/S 800 n pm

0800Z - 48784

0730Z 48775

040° 5 kts

C/C 040°



0700Z

045° SKT

48763

120AN 77

0630Z 48764

C/S 700 RPM

C/S 045°

0600Z 48758



0530Z 48760  
12 JAN 77

050° 750 RPM

c/c 050°  
0515Z

c/c 055°  
at 0505Z

0500Z 48757

050° 750 RPM

12 JAN 77

0430Z 48758

050° 750 RPM



0400 Z

050° 700 RPM

12 JAN 77

c/s 750 RPM  
0407 Z

0330 Z 48748

050° 700 RPM

JAN 12, 77

c/c 050°  
0305 Z

0300 Z 48738



055 700 RPM

0230 Z 48744 c/s 700 RPM  
0229 Z

48732  
0200 Z -1-12-77  
55° @ 600 RPM



0130Z  
12 Jan 77

48738

Begin slow turn  
to 055°  
@ 5 kts.

48771 0100Z 1-12-77

110° @ 650 RPM

48791 - 0030Z - 1-12-77

110° @ 650 RPM



0006Z C/C 110°

49808 1-12-77  
00012 125° @ 650 RPM

2352Z C/C 125°

48824  
2330Z  
1-11-77  
110° - 650 RPM

48844-2300Z  
1-11-77

110° @ 100 RPM



110 @ 650 rpm

48856. 2230Z 1-11-77

110° @ 650 rpm

2203Z c/c 110°

2200Z

48874

120° @ 650 rpm



48896

2130°

120-5 kts

2115Z C/C 120°

2100Z

48935

130° 650 rpm

2130Z

48967



2005 Z C/C 130°

~~2000 Z 140 @ 650 rpm 48997~~

~~489~~

~~140° - 51.6~~

~~48920~~

1940 Z C/C 140°

1930 Z 49032

1°

1900 Z

49066

145° @ 650 rpm



1835 36 sec <sup>firing</sup> cycle -

1830 Z 49088

1815 Z CIC 1450

1800 Z 49094  
190° 650 RPM



1730 Z 49106 160° 650 RPM

1700 Z 49111 160° 650 RPM

1630 Z 49129 160° 650 RPM



1600Z 49170  
160° @ 650 RPM

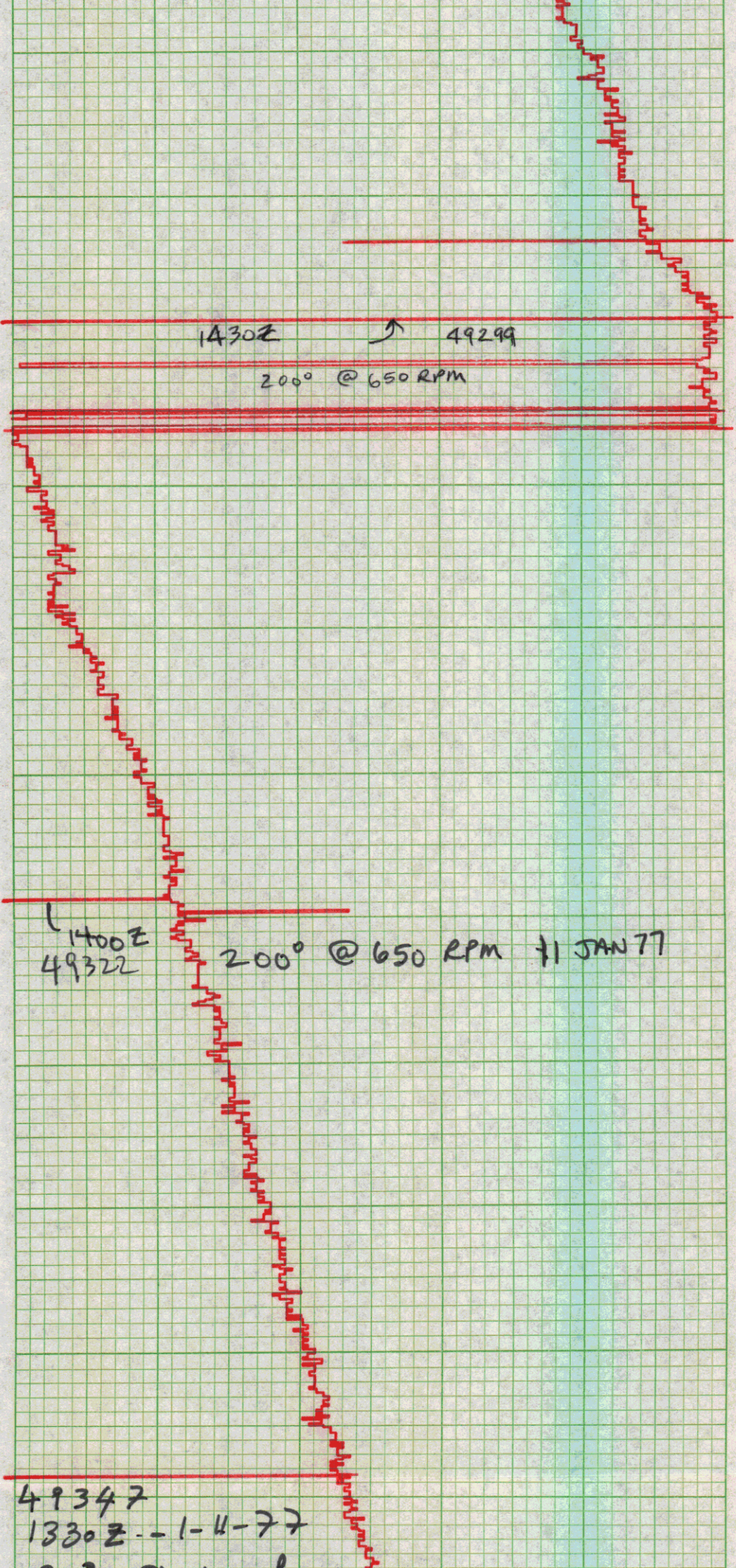
1558Z c/c 160°

1530Z 49209 200° @ 650 RPM

1500Z 49258  
IG 23-2 200° 650 RPM

11 JAN 77





1430Z



49299

200° @ 650 RPM

1400Z  
49322

200° @ 650 RPM 11 JAN 77

49347

1330Z -- 1-11-77



200 @ 650 RPM

49365. 1300 Z 1-11-77

200 @ 650 RPM

49388. 1280 Z 1-11-77

@ 650 RPM. 200

c/c 200 1207 Z



49418 185° @ 650 RPM  
1200 Z  
1-11-77

49447 - 1130 Z  
@ 650 RPM 185°

49474 - 1100 Z - 1-11-77  
650 RPM 185°

C/3 650 RPM 1047 Z



49497. 1030Z 1-11-77  
185° @ 700 RPM

e/c  
185  
c/s 700  
RPM

49517 1000Z 1-11-77  
175° @ 650 RPM

0930Z 49531 1750 @ 650 RPM



0915 C/C  
175° -

0900Z

49541

0830Z

49557

165° @ 650 rpm

0815Z C/C 165°

0810 C/C  
160° →



0800Z 49573

0730Z 49577

C/C 155° 0726Z -

11 JAN '77

0700Z

49571



0630Z 49573  
140° @ 650 rpm

C/C 140°

0600Z 49571  
123° 650 rpm

0530Z 49573  
123° @ 650 rpm



C/c 0505Z 123°

0500Z 49579  
121° 650 RPM

121° @ 650 RPM 0430Z 49587



0400Z 49600

121° 650 RPM  
11 JAN 77

C/S 650 RPM 0343Z

0330Z 49619 700 RPM  
121°

C/C 121° 0304Z

0300Z 49641  
C/S 700 RPM

C/S 650 RPM



0242Z

0230Z 49659

49674. 0200Z  
115° @ 600 RPM 1-11-77

49684. 0130Z 1-11-77  
115° @ 600 RPM



c/c 115° . 0110 Z

49693. 0100 Z 1-11-77

110° @ 600 RPM

-49706. 0030 Z

110° @ 600 RPM

49722.

1-11-77

110° @ 600 RPM



0000 Z

49741 2330 Z

110° (h) 600 RPM

49759 - 2300 Z

110° (h) 600 RPM.

1-10-77



49777. 2230 Z  
110° (a) 600 RPM

2212Z C/C 110°

2200Z 49800 C/C 120°

C/C 110° 2150Z

2145Z, C/C 115°

48921

2130Z



— 2112 C/C 120°

100A 70

2100Z 49844

2030Z 49869

C/C 125

2000Z 49895

130° @ 600 fpm



19302

49919

130° @ 600Rpm

19002

130° @ 600Rpm

49943



1830 Z 49968  
130° @ 600 Rpm

1800 Z 49993 130° @ 600 Rpm  
10 JAN 77

1730 Z 130° @ 600 RPM  
10 JAN 77

C/C 130° 1728Z

C/S 600 RPM  
resumed



maggie resume 1709Z

off at 1622Z to separate <sup>maggie</sup> from  
streamer

49278

maggie  
wropped  
around  
streamer  
here

1600Z 50122

c/c 150°  
1547Z  
c/s 600 RPM

c/s 700 RPM  
eluding freighter

1530Z 50180

c/s 600 RPM 1512Z



1500 Z 50250  
650 RPM 198°

10 JAN 77

1430 Z 50324

50378. 1400 Z  
1-10-77. 650 RPM. 198°



1337 c/s 658 RPM

1330Z 50404

1-10-77 @ 700 RPM. 198°

1300Z

50426.

1-10-77

700 RPM

198°

1230Z 50439



② 700 RPM. 198°

1215 C/B  
700 RPM

50440

1206 Z  
1-10-77 198°  
② 750 RPM

1130Z 50463  
~~1130Z~~ ② 750 RPM 198°



1100Z. 1-10-77. 50500



1000Z 50568



0930Z 50588

~~0930Z~~ 50598

20060

50610 0930Z 198-5.5 LK



0800Z 198-750-  
50624 ~5.5/15

0732Z

C/C 1980 C/S 750 RPM  
50642

0730Z



0700Z 50666

200° @ 700Rpm

C/C 200° -

0630Z 50681

0600Z 50696

10 Jan 77 202° @ 700Rpm



0530Z

50712

10 JAN 77

202° @ 700 RPM

202° @ 700 RPM

0500Z

50731

10 JAN 77

0430Z

50751

202° @ 700 RPM



0403Z c/s to 700 RPM

0400Z 50769

0330Z 50777

← c/c 0303Z  
+ 2070



0300Z

50767

0230Z

50750

c/c 0211Z  
to 200°

50742

210° @ 750 RPM

0200Z

1-10-77



0130-Z 1-10-77  
50743

210° @ 750 RPM

0100Z 10 Jan 77  
IG 23-2  
210° @ 5 kts

50753

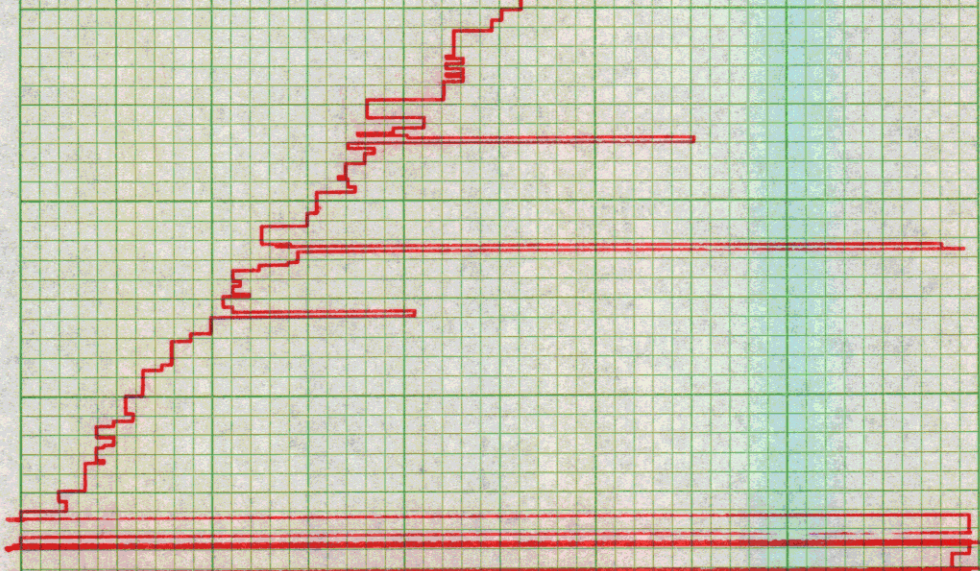
0037Z  
10 Jan 77

pull maggie

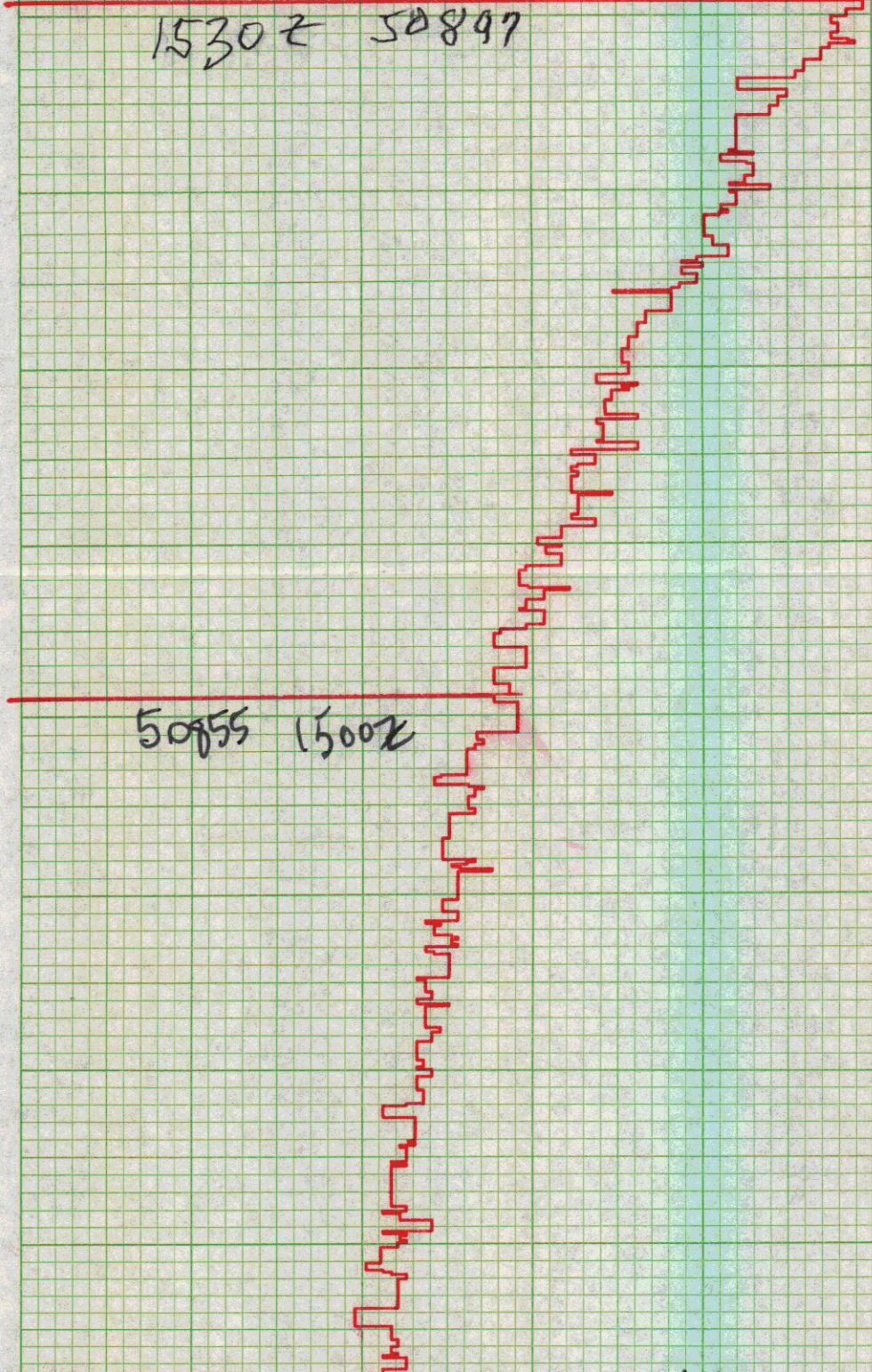
50787

c/c  
030°





1530z 50897



50855 1500z



1430Z 50842

1400Z 50834

1330Z 50808

9 Jan 77 072° @ 1000 RPM  
L4 23-2

50803



1300 Z 9 Jan  
072° @ 8 kts

50785

1230 Z 9 Jan 77  
Iq-23 072° @ 9 kts

50768

1200 Z 9 Jan 77  
Iq 23-2 072° @ 9 kts

50762



50756

1130 Z 9 JAN 77

072° @ 1000 RPM

1105 Z c/c 072°

50737

1100 Z

9 Jan 77

1030 Z

50718

9 Jan 77

IG 23-Z

068° @ 1000 RPM.



50701

1000 Z

9 JAN 77

IG 23-2

068° @

1000 RPM

CFC 68°

0950Z

0930Z

50701



0900Z

50687

073-9kt

0830Z 50679

0800Z 50662



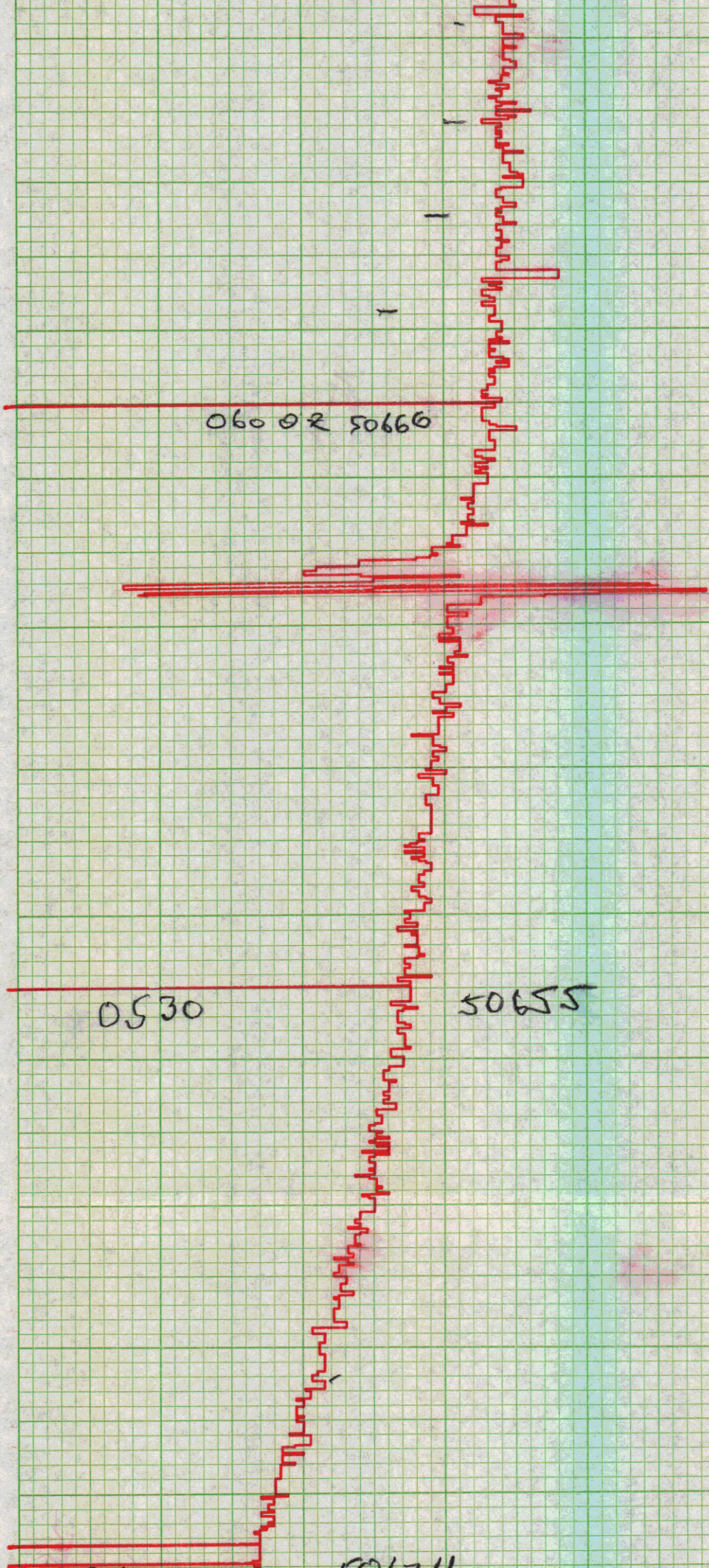
0730 Z 50653

5065 Z

0700 Z

0630 Z 50668







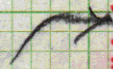
0500

50639



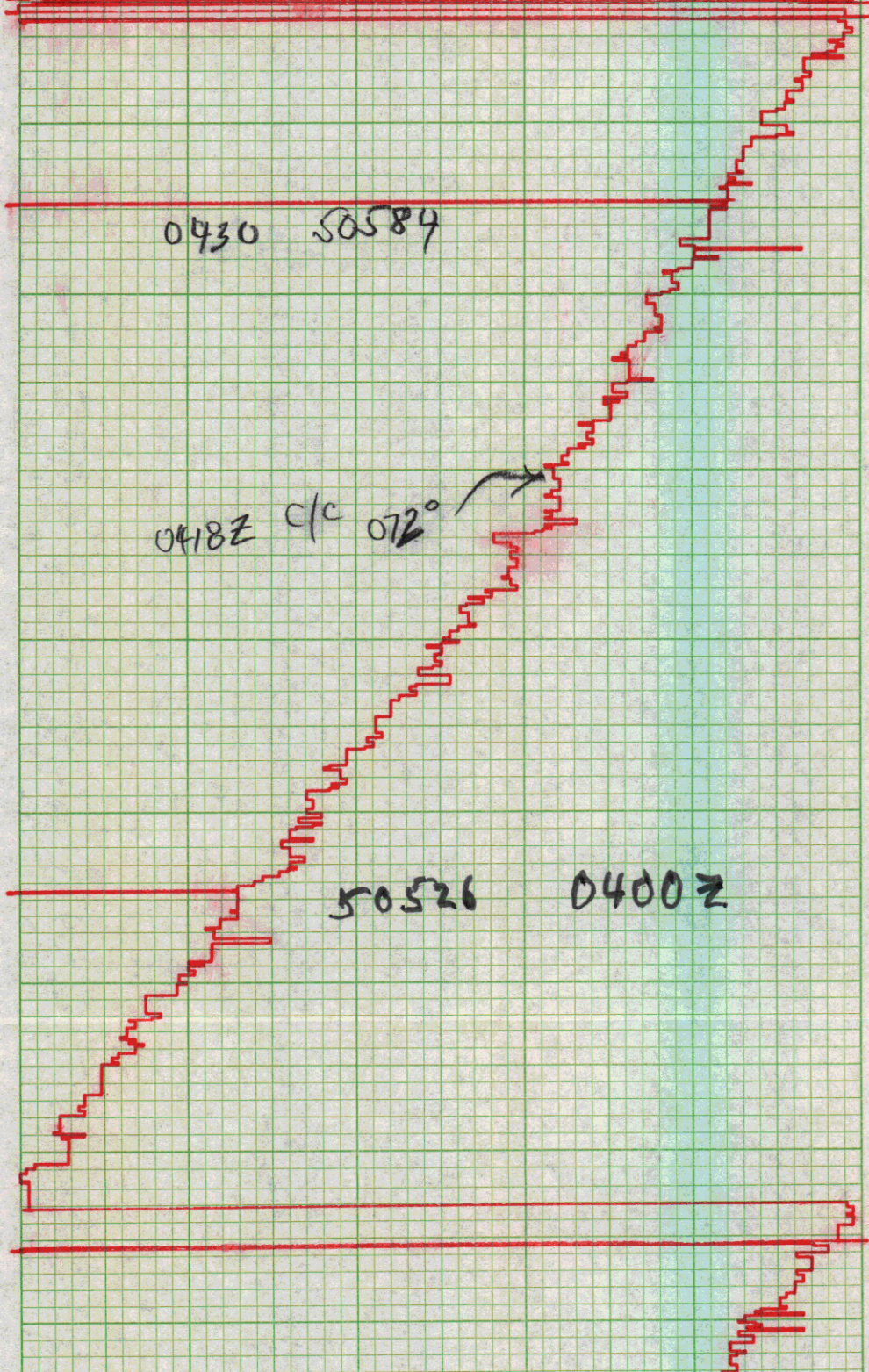
0430 50589

0418Z c/c 072°



50526

0400Z





0330z

50470

068° 9.5kts

0300z

50425

9 JAN 77

068°

0230z

50392

9 JAN 77

068°

068° C/C 0222z



0200 Z 9 Jan 77 - 50371  
079 @ 1000 RPM

0130 Z 9 Jan 77

50351

I<sub>4</sub> 23-2

079° @ 9 kts

0123 Z  
Oil Rig close to Port Side.

0108 Z

4/C 079°

0100 Z 50328 . 076°  
1-9-77. @ 1000 RPM.



c/c 076° - 0043 Z

0030 Z 50313. 1-9-77  
060° @ 1000 RPM

0022 Z

c/c 060° @ 1000 RPM

500304

0000 Z 9 Jan 77 Iq 23-2

076° @ 1000 RPM



50301. 2330 Z

2206 Z. C/c 076°

1-8-77. 2300 Z  
50294. 078°. @ 8.5 x 15  
(1000 RPM)

1-8-77. 2230 Z

50290. 078°. C/s. 1000 RPM.



2200 Z. 50274

078° @ 8 Kts

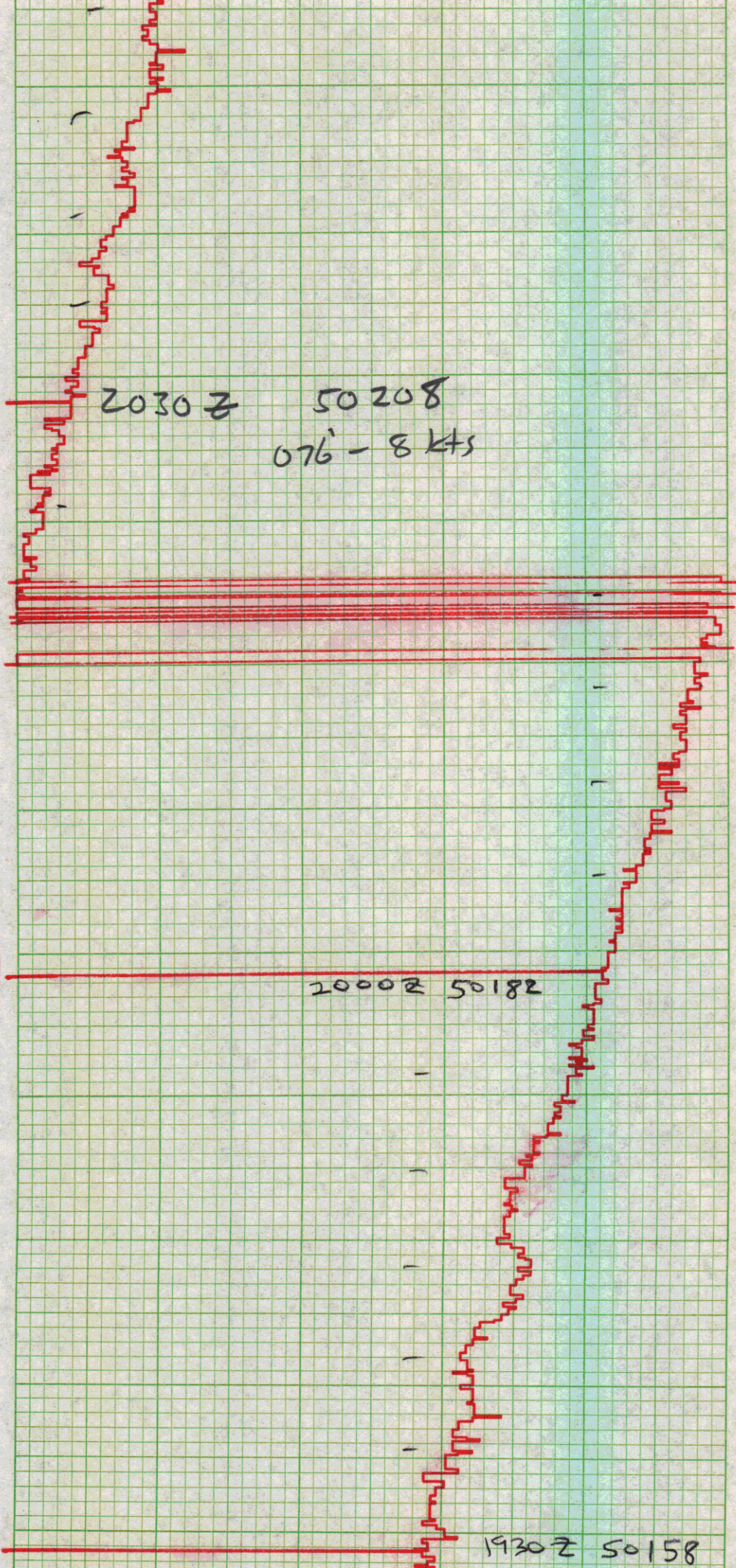
2130 Z - 50250

c/c 078°

2100 Z 50225

076 - 8 Kts



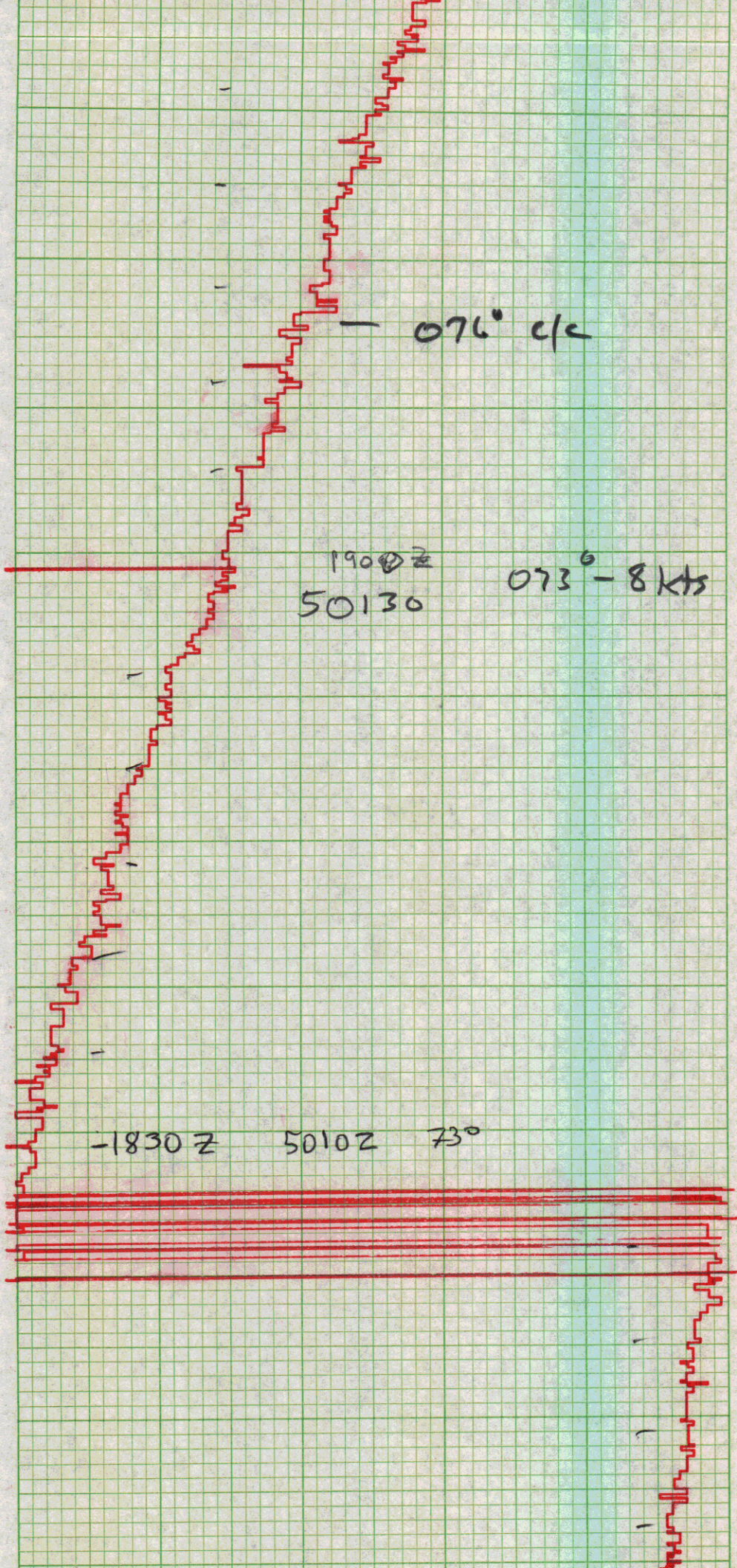


2030 Z 50208  
076 - 8 kts

2000 Z 50182

1930 Z 50158





076° c/c

1900Z  
50130

073° - 8 kts

-1830Z 5010Z 73°



1800Z 50090

1730Z  
50089

1716Z C/S  
slow ahead  
on one

1700Z 50001



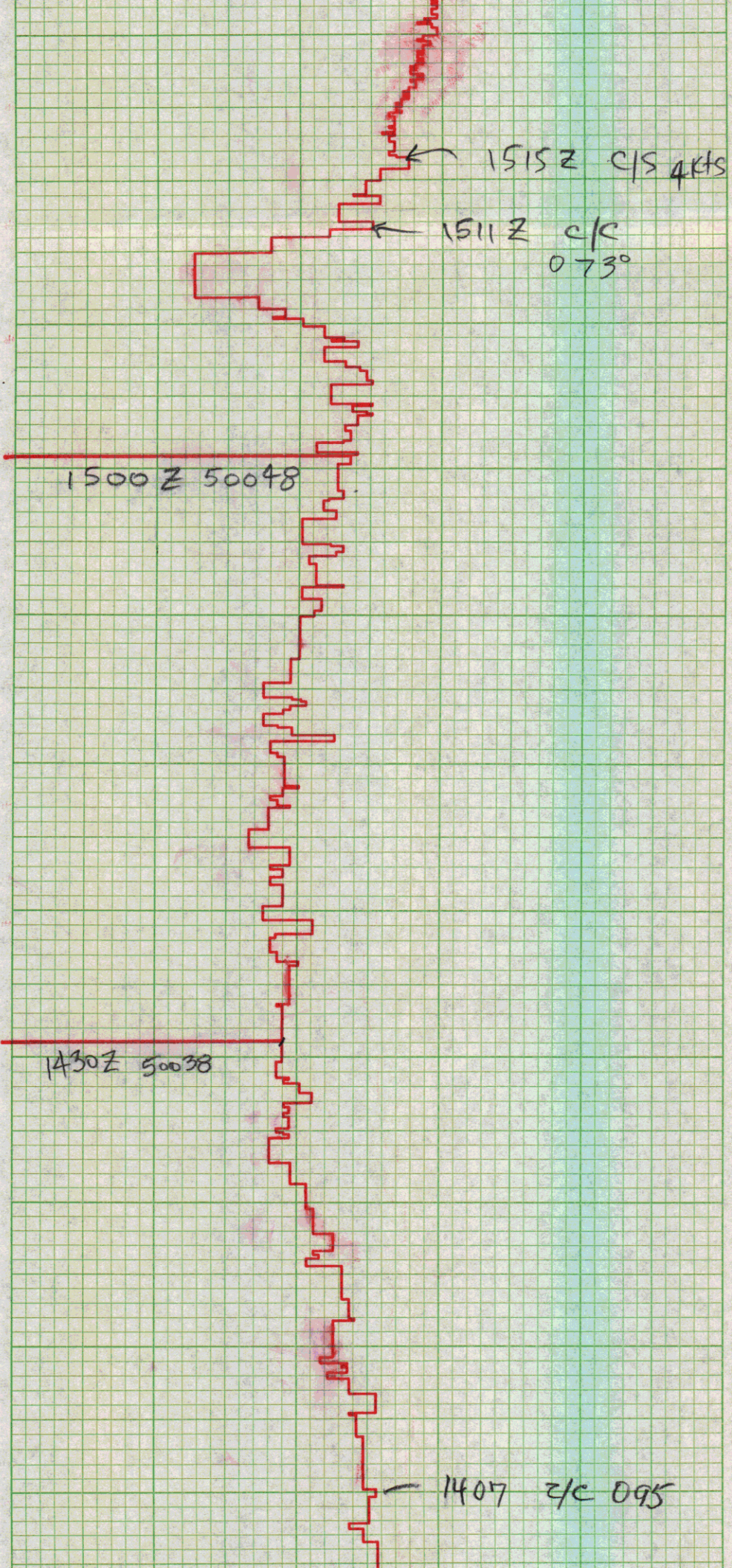
1630Z 50117

1600Z 50105

c/s 8KTS  
900rpm

1530Z 50064







1400 Z  
1-8-77

50052  
092 @ 10 K/L5

1330 Z  
1-8-77

50057  
092 @ 10 K/L5

1300 Z  
1-8-77

50050  
092 @ 10 K/L5



1230Z

8 Jan 77

50029

092° @ 10 Kts

1200Z

1-8-77

50021

092° - (2) 10 Kts

1130Z

1-8-77

50034

092° - 10 Kts



1100 Z  
8 I 77

50047

092° @ 10 kts

1030. 8 Jan 77. - 092 - 10 kts

50029.



1000Z - 50011

09Z - 10 kts

IG-23-2

CC 920

0930Z

50022

119° - 10 kts

0900Z 50050



0830Z 50080

0800Z 50113 10.3 kts  
1210

1210T 0730Z, 50117  
10 Kts



4C121°

50126

~~50124~~

119° - 10 kts - 0700 Z

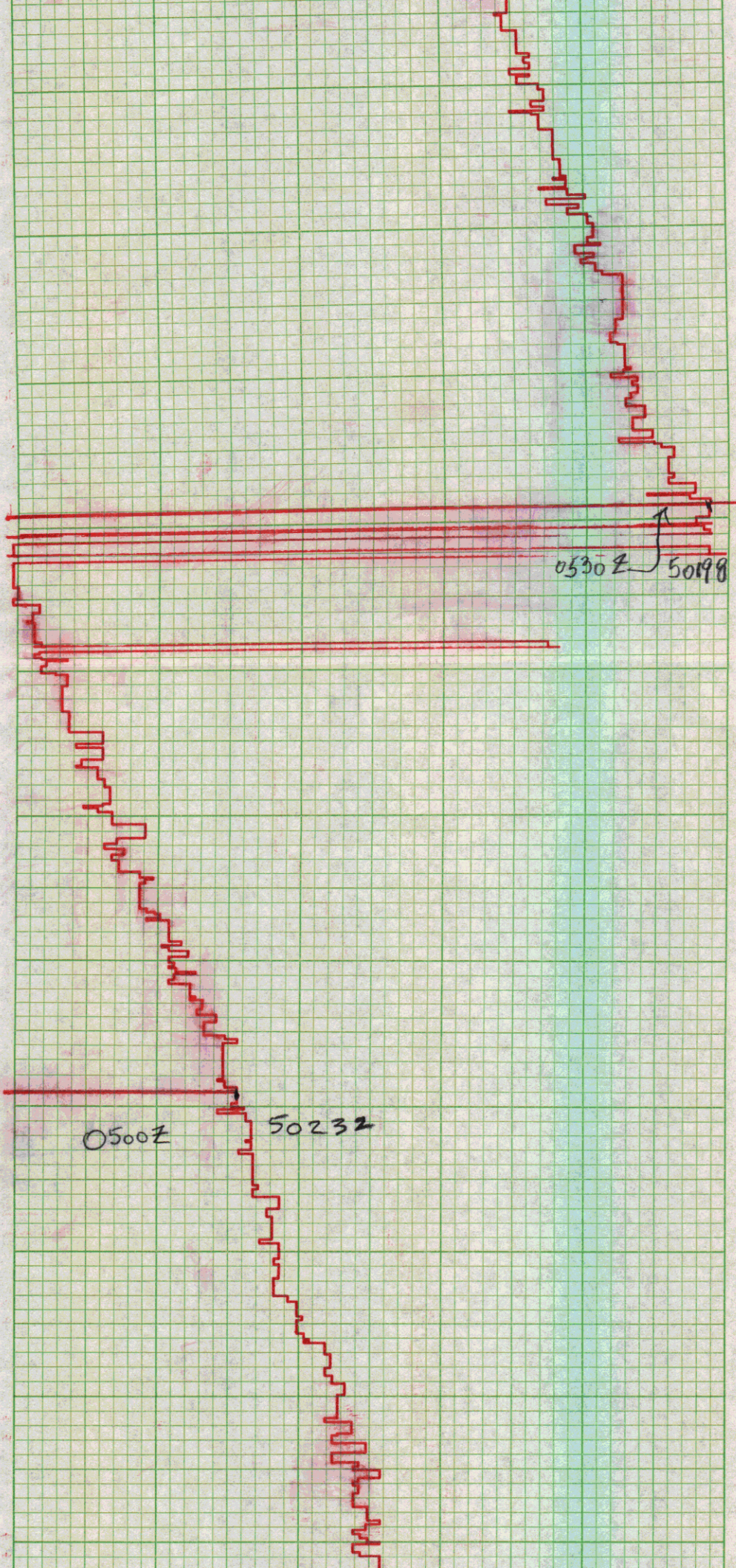
119° - 10 kts

0630Z 50142

8 JAN 1977

0600Z 50165







0430Z 50253

0400Z 50268

0330Z 50292



- 0308Z c/c 119°

0300 Z

50345

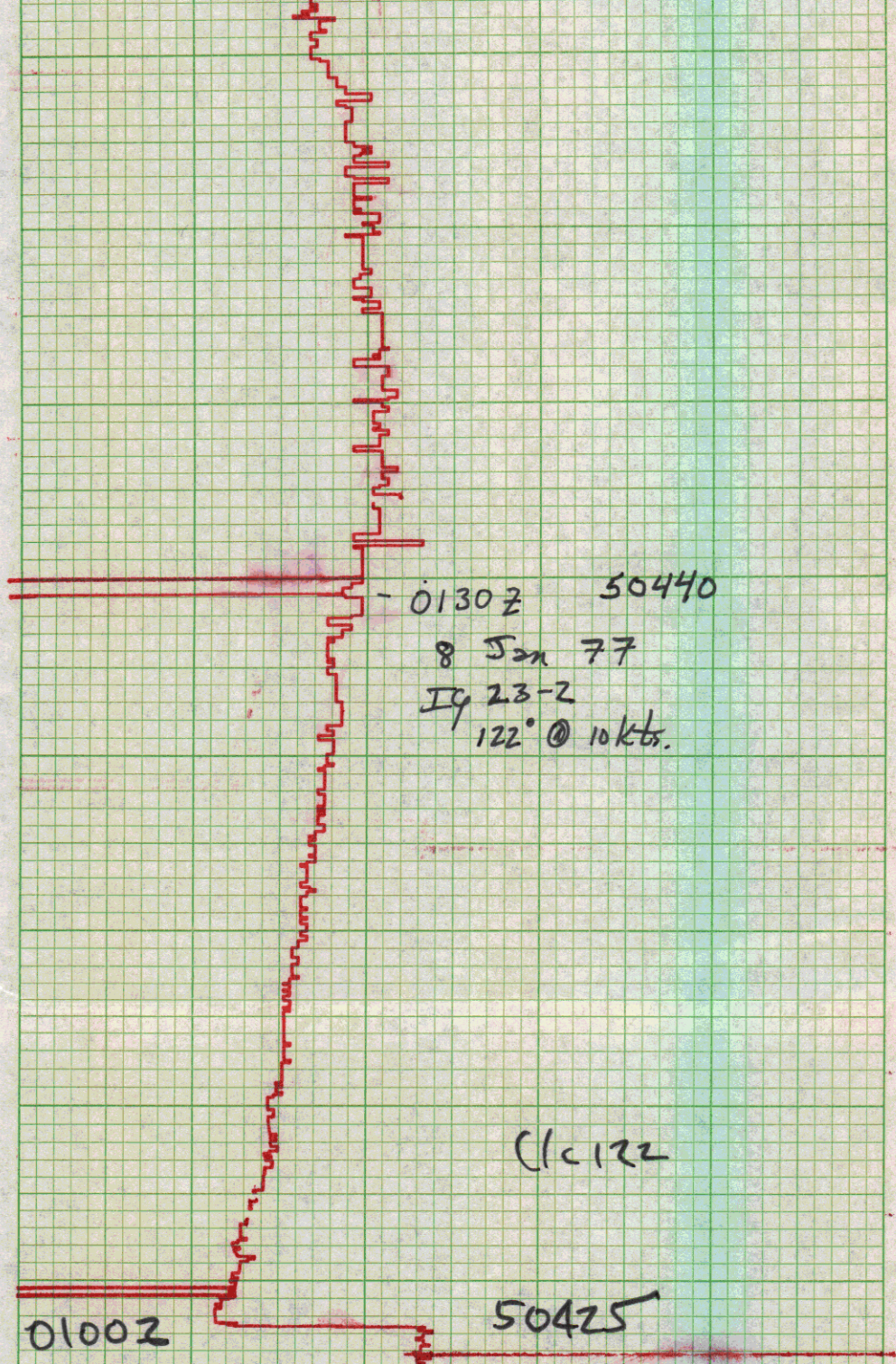
0230Z

50395

0200Z

50430





0100Z

8 JAN 77

50425

C-119°-S-4

C1C122

0130Z 50440

8 Jan 77

IG 23-2

122° @ 10 kts.

IG-23-2 -



