

END

2304 * o/c 132°

23052

23002 17 Jan 77

IG 23-2

130° @ 650 RPM

22302 1-17-77.

138 @ 650 RPM.

47470

2200 Z 17 Jan 77

47493

IC 23-2 130° @ 650 rpm

2138 Z CFS 650 rpm

2130 Z 47505 130° @ 600 rpm

CC 130°

2100 Z 47496

140° @ 600 rpm

17 F '77

2030 Z 140° @ 600 rpm 47485

2000 Z 47495

140° 3.7 kts 600 rpm

1930Z

47534

TURNING slowly
to 140° @ 600

240° @ 600 rpm

1900Z 47549

1831Z c/k 2400

1830Z 47559

250° @ 600 rpm

1800 Z 47552

250° @ 600 rpm

1732 c/s 600

1730 Z 47553

250° 650 RPM

1717 Z
c/c 250°

1700 Z 47557

240°

650 RPM

1630Z

47553

1632Z c/c 240°

17 JAN 77 235° 650 RPM

1600Z

47554

c/c 235° 1602Z

17 JAN 77
steady on 232°
650 RPM

c/c 1539Z
232°

c/s 650 RPM (slow turn)

1530Z 47535 330° 700 RPM 17 JAN 77

1502Z C/S 700 RPM

1500Z ↑ 47498 330° 750 RPM 17 JAN 77

1430Z 47440 330° 750 RPM 17 JAN 77

1400 Z 47382 330° 750 RPM

1330 Z 1-17-77

338 @ 750 RPM

47340

1309 Z C/S 750 RPM.

1302 Z. C/C 330°

47333

1300 Z 1-17-77

328 @ 700 RPM

123-Z 1-17-77
328° @ 700RPM

47343

1203-Z C/C 328°

120-Z 1-17-77
330° @ 700RPM.

47350

1130Z - 1-17-77 47885

330. slow -

~~about 2 mins~~

② 700 KPM.

- 1116 Z. C/S. slow ahead on 2
engines.

- 1112. C/C 330

47311 1100Z 1-17-77. 325° ② 3.7 Kls.

47290. 1030Z. 1-17-77. 325° ② 3.7 Kls

1000Z

47276

0935

0930Z

C/C 325

47246

0910Z

C/C 335

0900Z

47202

0830z 47155

0810z C/C 345°

0800z 47112

0730z 47077

355° @ 700 rpm

0710Z c/c 355°

0700Z 47062

345° @ 700 rpm

0630Z 47068

345° @ 700 rpm

0610Z

c/c 345°

c/s 700 rpm

0600Z 355° 47089
650 RPM

17 JAN 77

0530Z 47129 355° 650 RPM

0502Z c/s 650 RPM

0500Z

4718Z 335°
700 RPM

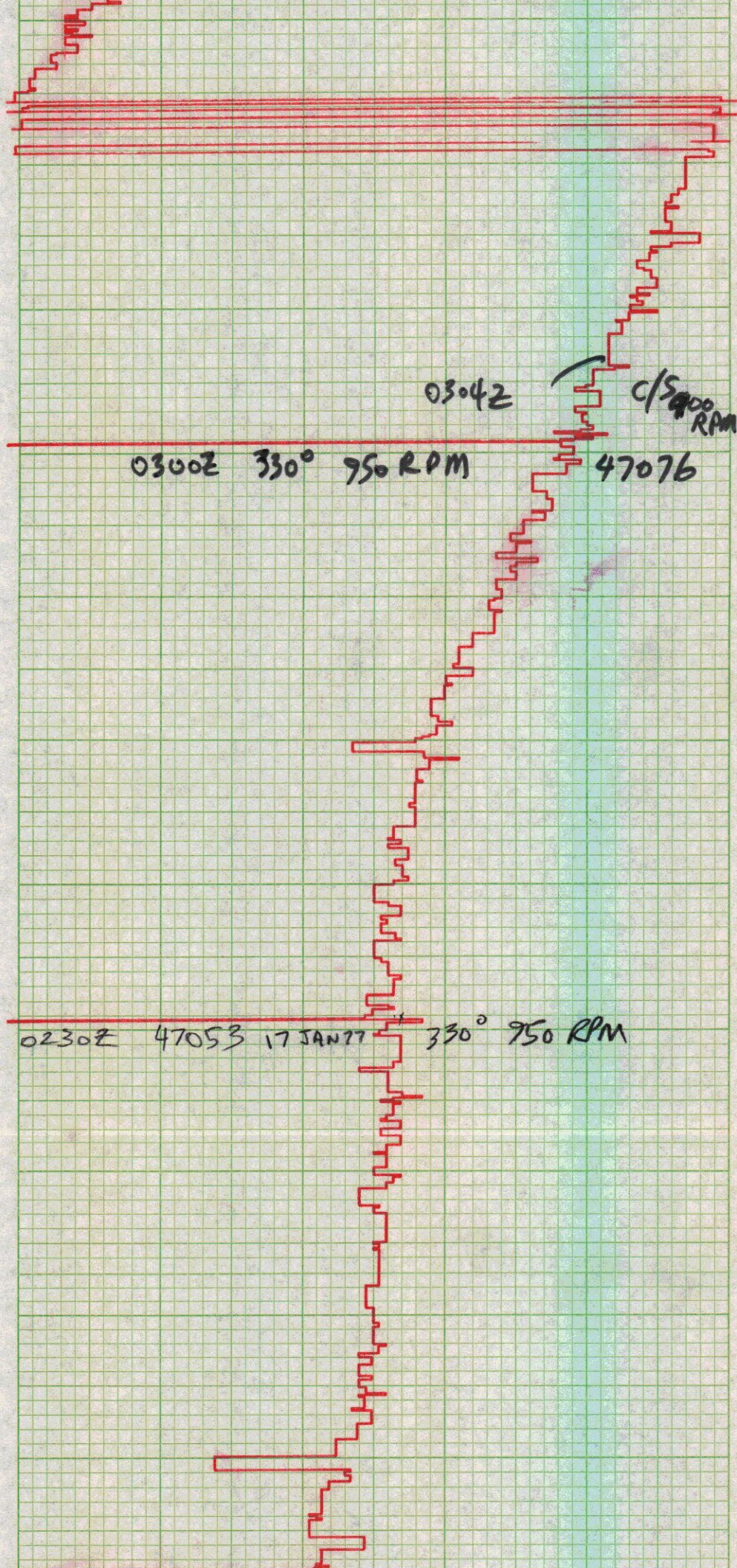
c/c 335° 0436z

0430z 47211 330° 700 RPM

0400z 47177 330° 700 RPM

0330z 47127 330° 700 RPM

c/s 700 RPM 0327z



0300Z 330° 750 RPM 0304Z C/S 900 RPM 47076

0230Z 47053 17 JAN 77 330° 750 RPM

0200Z 1-17-77

47038

330° @ 950 RPM

47001

0130Z

46999

17 Jan 77

IG 23-2

330° @ 950 RPM

0100Z 1-17-77 330° 950 RPM

46972

0042 c/c 330

00462

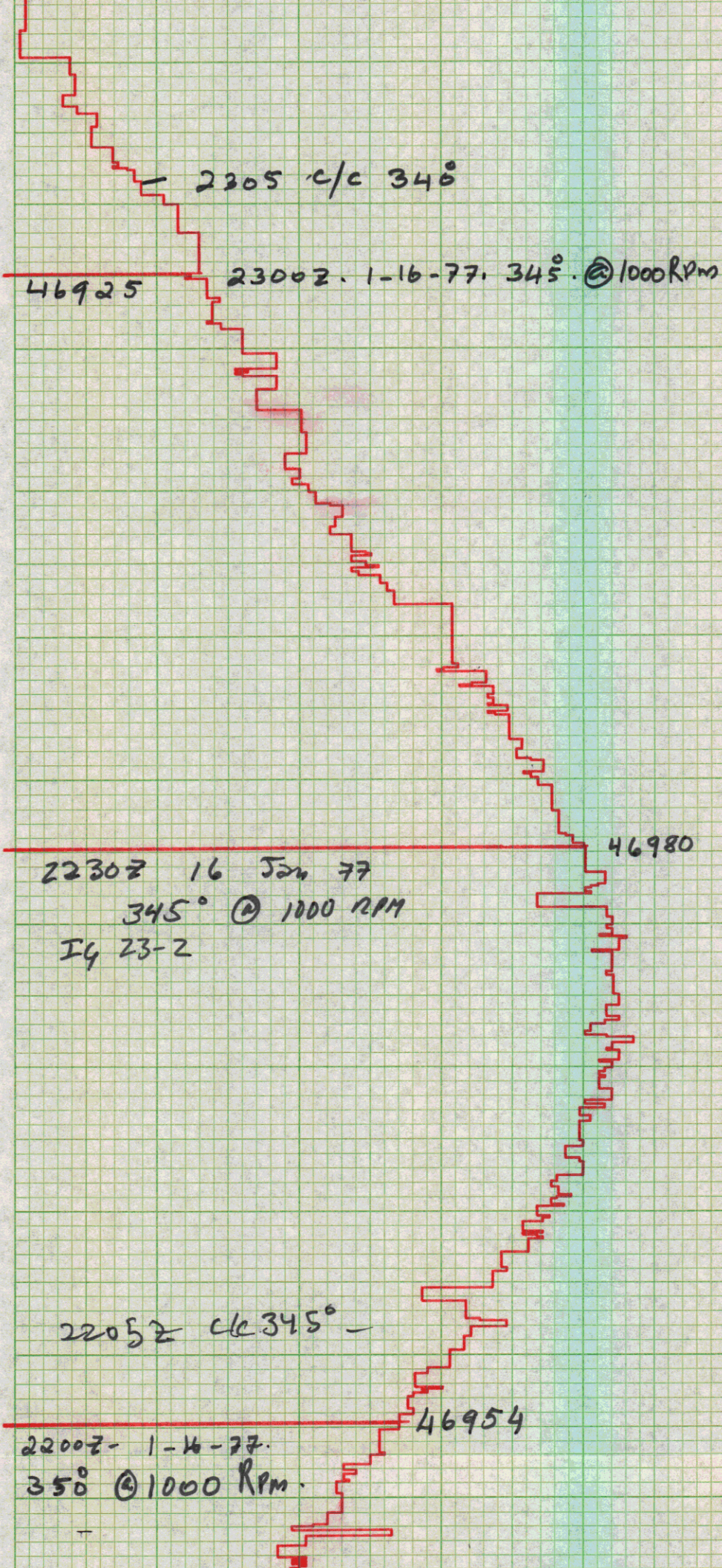
00302 46950

00052 C/K 325 C/S 950 RPM

46915 00002 1-17-77 340° @ 1000 RPM.

23302 1-16-77 340° @ 1000 RPM.

46884



2205 c/c 345

46925

23002- 1-16-77. 345°. @1000RPM

22302 16 Jan 77

345° @ 1000 RPM

I4 23-2

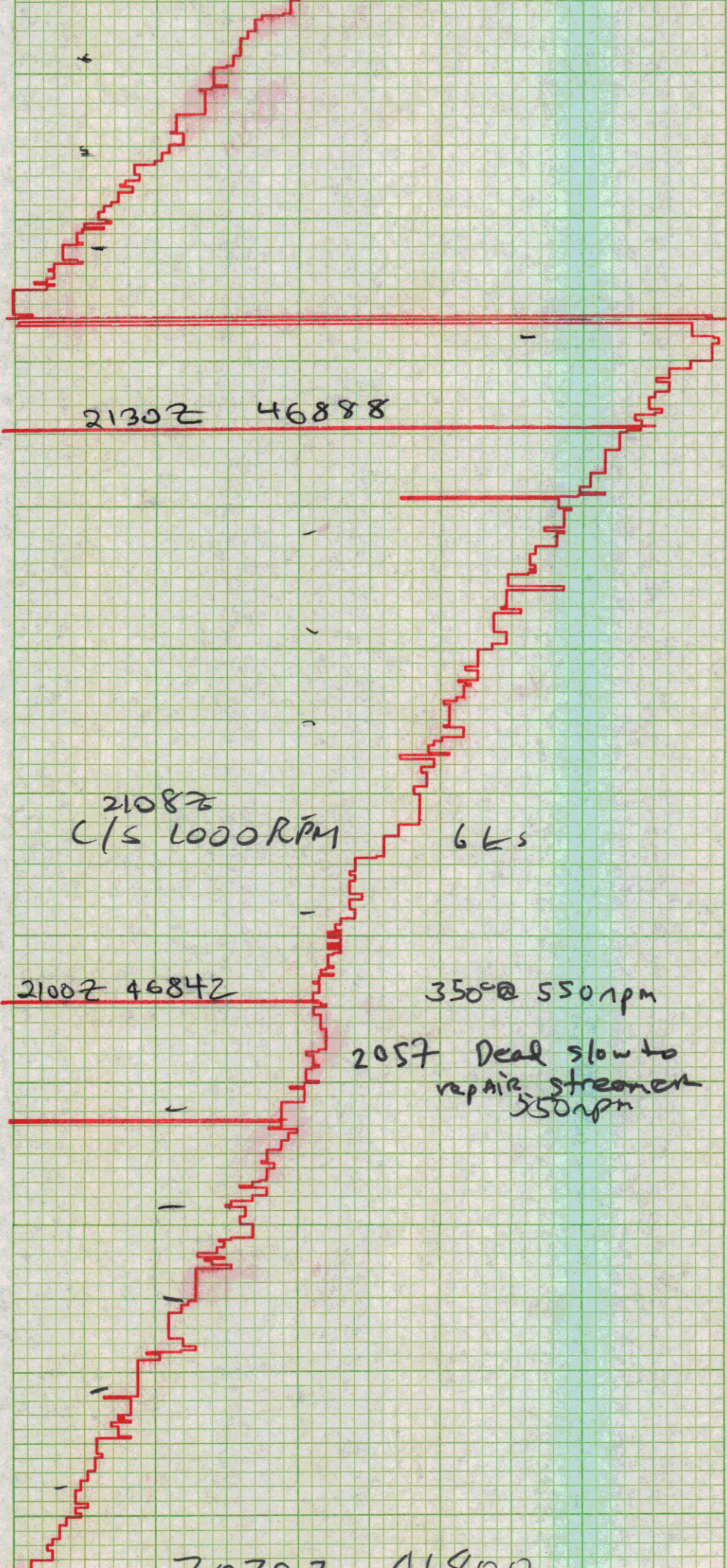
46980

22052 c/c 345° -

46954

22002- 1-16-77.

350° @ 1000 RPM.



2030 Z 46800

2000 Z 46771
345° @ 850 rpm

16F'77

1930 Z 46759
345° @ 850 rpm

1918 Z ck 345°
cis 850 rpm

1900Z 46749
335° - 6 kts

C/C 335°

1830Z 46739

330° @ 750 rpm

1803Z c/c 330°

1800Z

46732 320° 750 RPM

46728 1730Z

320° 750 RPM

16 JAN 77

C/S
1702Z 750 RPM

1700Z 46741

320° 800 RPM

1630Z 46741 320° 800 RPM

c/c 320° 1614 Z

1600 Z 46736

315° 800 RPM

1530 Z 46739 315°
800 RPM

1503Z to 800 RPM

46737

1500Z
3150

750 RPM

16 JAN 77

1442Z c/c 315° c/s 750 RPM

1430Z 46721

46670. 1-16-77. 1400Z. 322° @ 850 RPM.

- 1340. c/s
850 RPM

- 13352 c/s 600 RPM

46664
13302 1-16-77. 322 @ 900 RPM

1324. steady @ 322°

- 1310 c/c 322 (slow turn)

46251 13002. 1-16-77. 240 @ 900 RPM

46601

46596. 12302. 1-16-77. 240 @ 900 RPM

1207Z C/5900 h₁₀₀

46580

1200Z 1-16-77 240 @ 6 kts (950 Rpm)

46588. 1130Z 1-16-77 240 @ 6 kts (950 Rpm)

46617 1100Z 1-16-77 240 @ 950 Rpm (6 kts)

1030Z
16 Jan 77

46631

I4 23-2
240° @ 6 kts
(950 rpm)

C/C 240° 16005Z

1000Z 46629

0935 Z - c/c 245°

0930 Z

46635

240° @ 900 rpm

0907 c/c 240°

0900 Z

46669

0830 Z

46710

245° - 61 ft

0805Z

clk 245°

0800Z

46737 255° @ 950rpm

0730Z

46740

255°

@ 900rpm

0722Z

255° 950rpm

0700Z

46735

260°

900 RPM

C/L 260° 900 RPM

0630Z 255° @ 1000 rpm
46724

C/L 0604Z 255°

46714 0600Z 243° 1000 RPM
16 JAN 77

IG 23-1 243° 1000 RPM
0530 46711

0500Z 46718 243° 1000 RPM

IG 23-2
0430Z 46730 243° 1000 RPM 16 JAN 77

0402Z C/S 1000 RPM

0400Z

46763
16 JAN 77

243°

900 RPM

L 0330Z 46798 243° 900 RPM

0300Z 46837

C/S 900 RPM

243° 650 RPM

16 JAN 77

0230Z

46857

16 JAN 77

243° 650 RPM

0224Z C/C 243°

0200Z. 1-16-77. 235° @ 650 RPM

46881

46899. 0130Z. 1-16-77. 235° @ 650 RPM.

46927. 0100Z
c/c 235° (slow)
94xM) 650 RPM

0030Z 1-16-77 46933
150 650 RPM

0004 2 c/c 150°

0000 Z 16 JAN 77
145° 650 RPM

46934

2330 Z 1-15-77
145° ① 650 RPM.

46964

2306. C/C 145°

46995, 2300 Z, 145° ① 650 RPM

2237Z. C/c 140°
C/S 650 RPM.

47010 2230Z 1-15-77.
125° @ 600 RPM.

2200Z

47037

2140Z C/S 600 rpm

2130Z 47076
125° @ 650 rpm

2100Z

47088

125° - 650

C/L 125°

C/S 650 RPM

2030Z

47090

2000Z

47079

135° @ 700 rpm

1935Z C/S 700 rpm

1930Z 47049

1900Z 47044
135° - 6 kts

1830Z 47046

1800Z

47032

135° 750 RPM
155AN77

1730Z

135° 750 RPM

155AN76

1700Z 47128 135° 750 RPM 15 JAN 77

1630Z 47210 135° 750 RPM

1600Z 47281 135° 750 RPM

1530Z 47348

135° 750 RPM

1509Z C/C 135°

↑ 1500Z 47380 142° 750 RPM

magpie looking signal
not in

↑ 1430 Z 47396 142° 750 RPM

c/c 1404 Z 142°

47399; 1400 Z, 1-15-77; 145° @ 750 RPM.

47406, 133° Z, 1-15-77.
145° @ 750 RPM.

1300Z 1-15-77 47427
145° @ 750 RPM

1230Z 15 Jan 77

47473

IG 23-2 C/C 145° @ 750 RPM

47527

1200Z, 1-15-77, 142°, 750 RPM

1157Z C/C 142°

47599. 1130Z. 1-15-77
139 @ 750 RPM.

1103Z c/c 139 -
c/3750 RPM
1100Z. 1-15-77 47638
142 @ 800 RPM.

1030Z. 1-15-77 47646.
142 @ 800 RPM

1000Z 47607

142° @ 6 kts.

0930Z 150° @ 6 kts 47584

15

0900Z 47609
150° @ 6Kts.

0830Z 47652

C/C 150°

0800Z 47696

0750Z

47737 165° @ 800 rpm

0700Z 47792

165° @ 800 rpm

0630Z 47852

0601 c/s 800 n pm

06002 47883 165° 900 RPM

155 ANT

05302

47862

165° 900 RPM

c/s 05017 165°

0500Z

47855

185° 900 RPM

0430Z

47880

185° 900 RPM

15 JAN 77

0401Z C/C 185° C/S 900 RPM

0400Z 47905 180° 850 RPM

0330Z 41945

180° 850 RPM

0300Z 180° 850 RPM

0230Z 48016 180° 850 RPM

0200Z 1-15-77

165° @ 800 RPM

0204 C/C 180°
48038. C/S 850 RPM

48063

0130Z 1-15-77

165° @ 800 RPM

0109Z C/C 165°
C/S 800 RPM

48096. 0100Z. 1-15-77

145° @ 700 RPM.

48098

48100. 00030Z 1-15-77
145° @ 700 RPM.

0004

c/c 145°

48121 0000Z 15 Jan 77
14 23-2
135° @ 6 kts

2330 Z 1-14-77

48132

135° @ 700 RPM

2300 Z 1-14-77

48147

138° @ 700 RPM

2230 Z 1-14-77

48172

135° @ 700 RPM.

2208 c/c 135°

2200Z 48182
125° @ 700 rpm

2130Z 48203 125° @ 700 rpm

c/c 125° 2108Z

2100Z 48227

115° - 6 kts

14 JAN '77

2030Z 48254
1150 @ 700 rpm

C/C 1150 C/S 700
RPM

2000Z 48286

C/C 110° 1935

1930Z

48322

11508

125-61415

1900Z 48356

1830Z 48392
40Z

1802Z c/c 125° c/s 750 RPM

1800Z

48436 145° 800 RPM

1730 Z 48472 145° 800 RPM 14 JAN 77

1702 Z c/c 145° c/s 800 RPM

1700Z 48508 150° 850 RPM

1630z

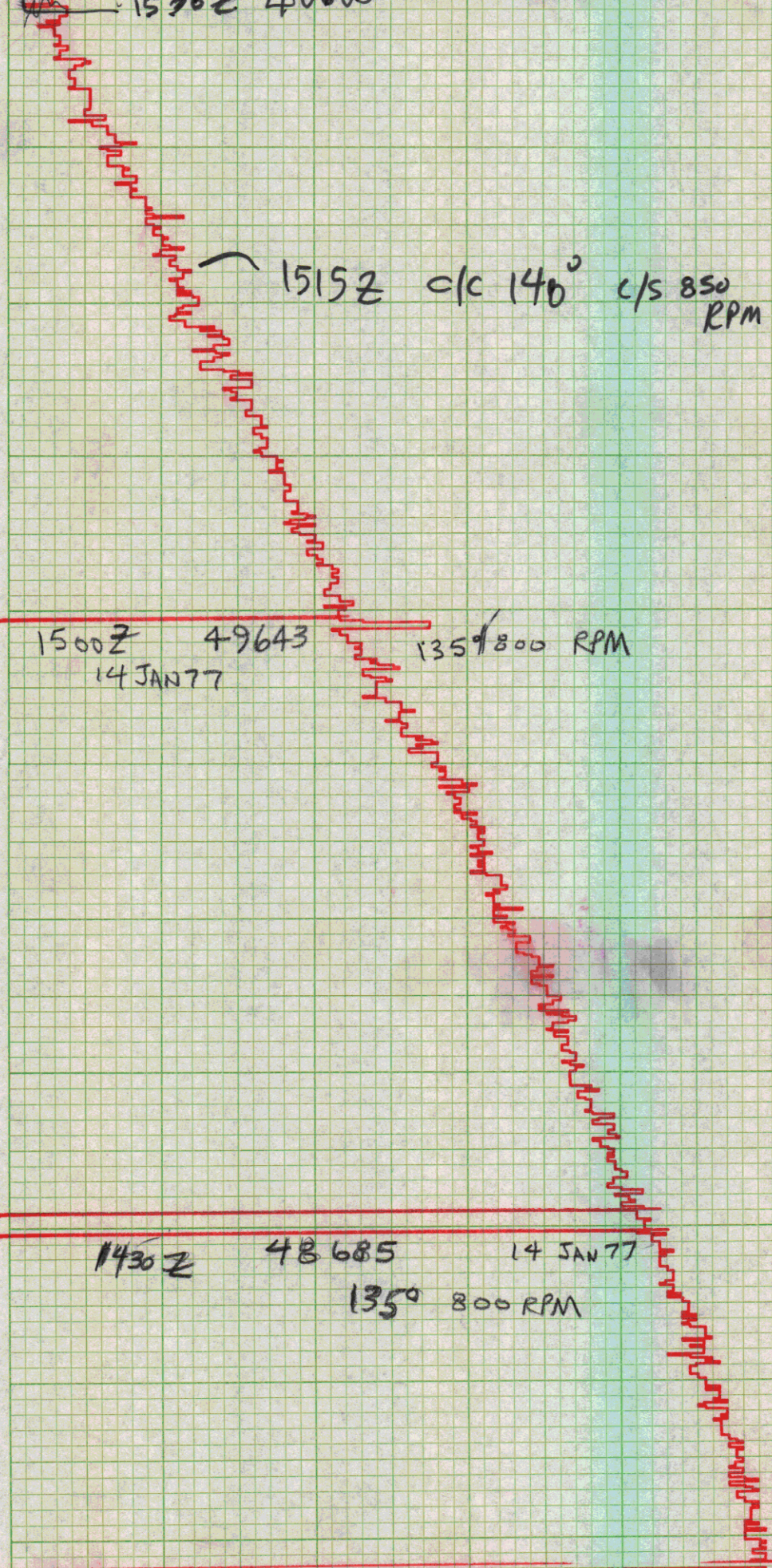
48535 150°
850 RPM

1604z c/c 150°

1600z

48566 140°
850 RPM

1600z 11.8605 140° 850 RPM



1515Z c/c 140° c/s 850 RPM

1500Z 49643
14 JAN 77

135° 800 RPM

1430Z 48685

14 JAN 77

135° 800 RPM

14052 c/r 135°

48714 1400 Z 1-14-77 130° @ 800 RPM

48741

1330 Z 1-14-77

130° @ 800 RPM

13082 c/r 130°

49762

1300 Z 1-14-77

125° @ 800 RPM

1220 Z 1-14-77
125° @ 800 RPM

48782

1202 C/S 800 RPM

48880 1200 Z 125° @ 700 RPM

- C/C 125° - 1133 Z

48825

1130 Z

225° 700 RPM

1115 Z c/s. 700 Rpm

48850

1100 Z. 1-14-77
225° @ 6 kV

48878

1030 Z. 1-14-77
225° @ 6 kV

1000Z 48896
225° @ 800 rpm

0930Z 48910

c/s 800 RPM

0900Z 48927
225° @ 750 rpm

48952
0830Z

0800Z - 48975
225° 6 kts

14 JAN
177

0730Z

49003

- C/C 235° 0715 Z

0700 Z

49037

0630 Z 49079
230° @ 750 rpm

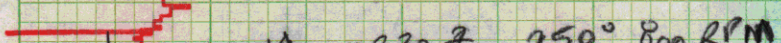
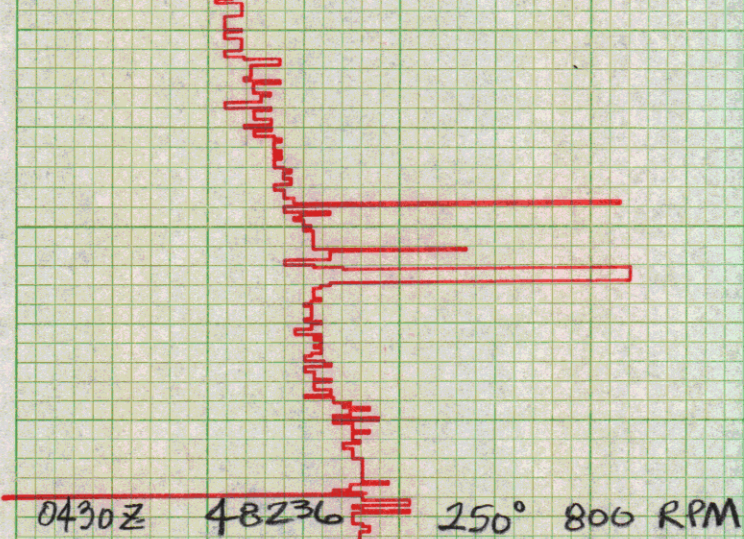
- 0615 C/C 230°

0600 Z 49117
240° @ 750 rpm
14 JAN 77

0530 Z 49164 240° 750 RPM 14 JAN 77

0526 Z c/c 240° c/s 750 RPM

0500 Z 49207 250° 800 RPM



c/s 800 RPM 0303Z

03 00Z 49173 250° 700 RPM

CRUISE:

IV 23-2

INSTRUMENT:

Maggie

BEGIN DATE:

14 丁

0235

END. DATE

711 (5) _____ (7)

DEB. LAT.

1-4-55

END. LAT.

1525

REMARKS (SWEEP SPEED, ETC.)

