

87

90

00

12

20

430

42

51

58

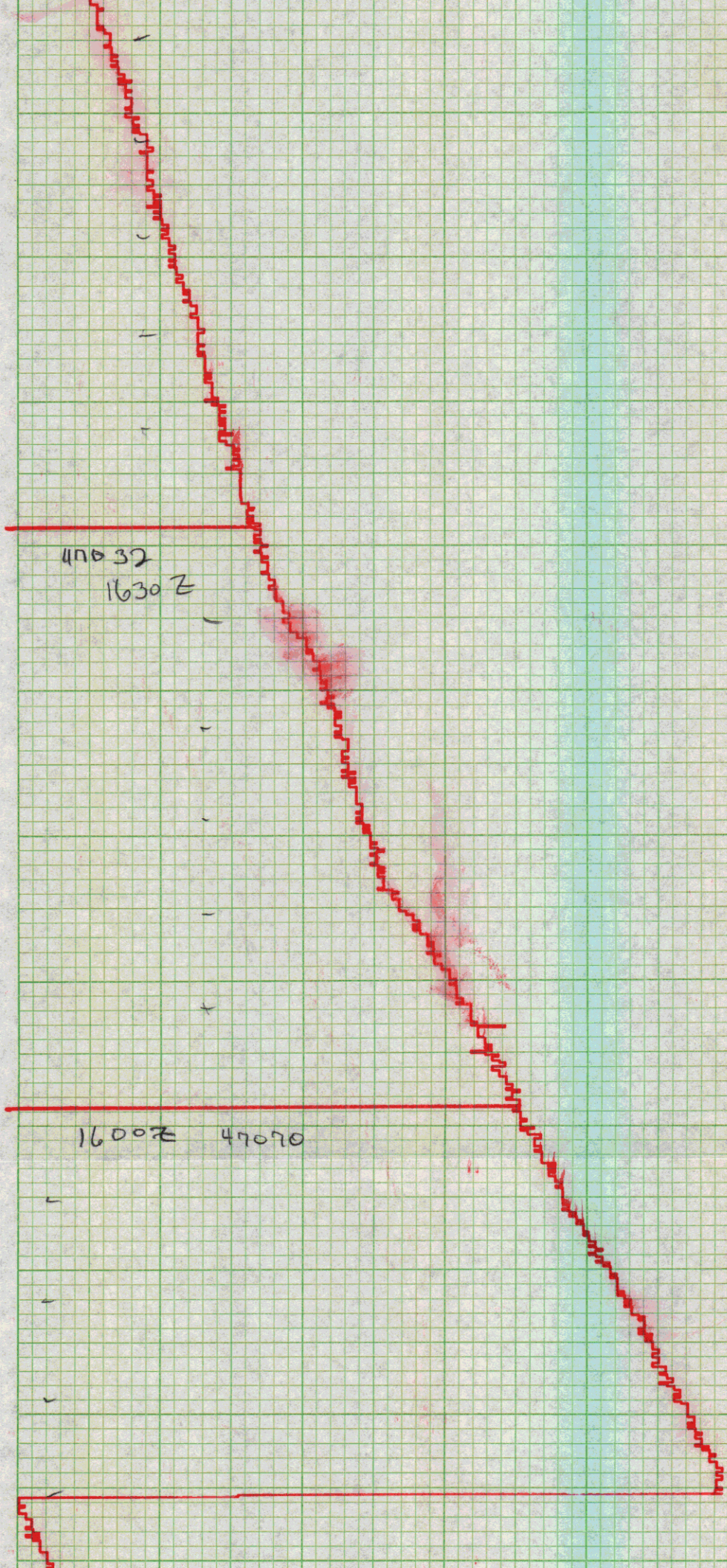
67

46974

17302

47008

17002



15302 47116

47152

15002

47166

14302

47151 1400Z

1330 Z

47149Z

47149Z

1300 Z
7 DEC 1976

1230Z 7 DEC, 1976 47109

1230Z 7 DEC, 1976

1200Z 7 DEC, 1976

47065

1130 Z 47043A

1 DEC 76

1100Z

47032

470218

1030Z

1000Z
7 DEC
1967

47019

47031
0930Z
7 DEC 76

c/c 150°

47047
0900Z
7 DEC 76

Dec. 7, 1976
155° 4.5 KTS.

47061
0830Z

0800 47059
155° 4.5 KTS

Dec. 7, 1976

0730 47051

Dec. 7, 1976
155° 4.5 Kts.

Dec 7, 1976
155° 4.5 Kts.

47045
0700Z

0630 Z 47059
155° 4.5 Kts.

Dec. 7, 1976

0600Z
47089

47130 0530Z

47177 0500Z

0430Z
47219

47255 0400Z

0330Z 47295

0300 Z
47332

0230 Z

47364

0200Z 7Dec 47398

474270 0130Z

0100Z
7DEC, 76

47459

47497 f 0030 z

0026 z -1C 145ⁿ

0000 z
7 DEC, 1976

47524

47548 f
2330 z

23002 6 DEC. 76

4759
47570

475962 22302

47608 r

2200 Z

2130 47610 140° 4.1 KTS
Dec. 6, 1976

2100 47612 C/C 140° 4.1 KTS
Dec 6, 1976

2030 47612 Dec. 6, 1976
130° 4.1 Kts.

2000Z 47613

1930Z Dec. 6, 1976 47615
130° ~ 4 Kts.

1913 c/c 130°

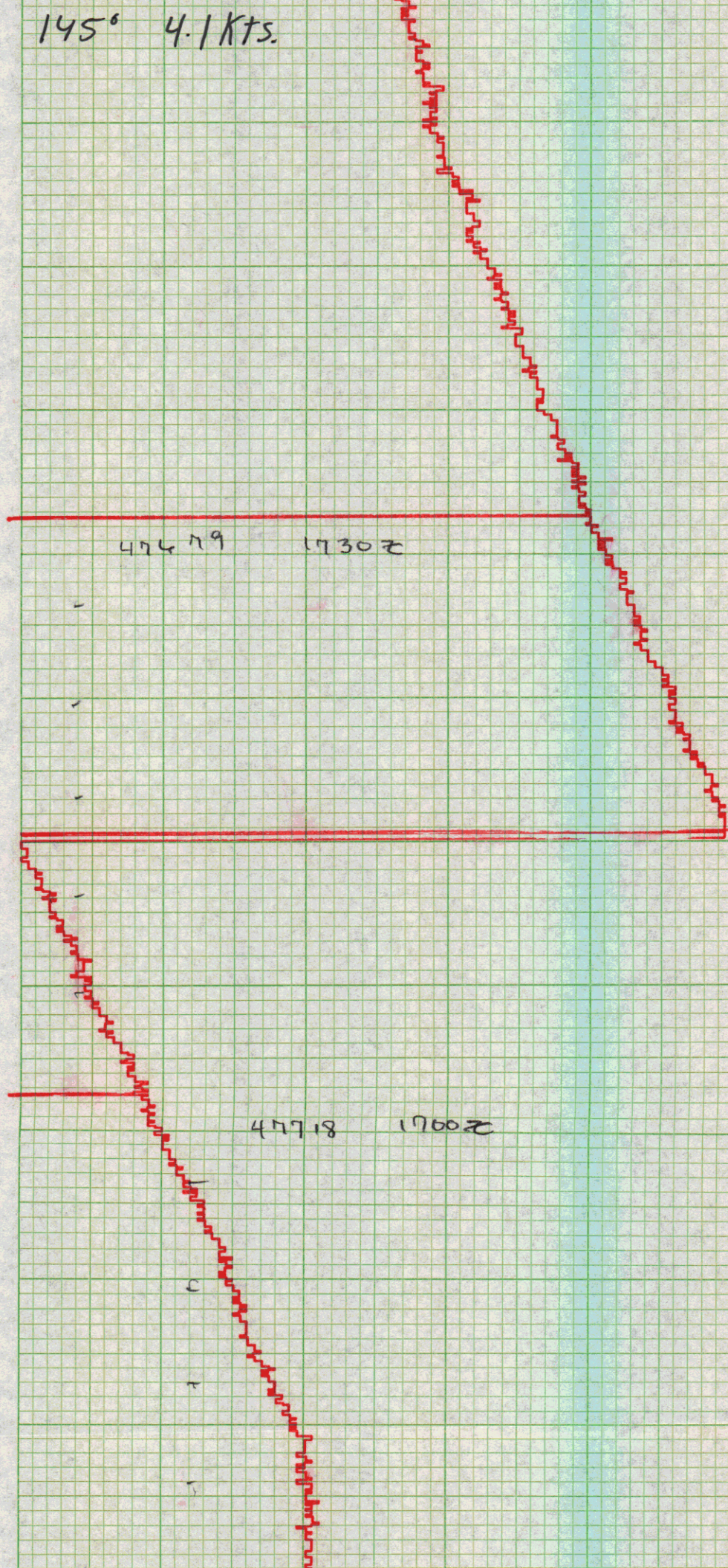
1900Z
47620

1830 47630 Dec. 6, 1976
145° 4.4 KTS.

1800 47650

Dec. 6, 1976

145° 4.1 Kts.



47740 1630Z
6 Dec 76

1600Z 47724

1530 47708Z

47693 1500Z

47680 1430Z

47667 1400Z

476542

1330 Z

476382

1300 Z

6 DEC 76

1230Z
6 DEC, 76

47623

1200Z
6 DEC, 76

47613

1130Z 47606 r

1100Z 47606
6 DEC 76

1030Z
6 DEC
1976

47609

1000Z
6 DEC 76

47618x

0930 Z

47634

Dec. 6, 1976

075°

075°

0900 47642

Dec. 6, 1976

08:30 Z Dec. 6, 1976

47637

476 57

0800 Z
47606
DEC 6 '76

0730 47576 DEC. 6, 1976 075° SKTS

Dec. 6, 1976

0700Z 47550

075° SKTS.

0630Z 47534

0620 resume speed.

0603 dead slow

0600 SKTS 75°

47523

47511 0530Z

Dec. 6, 1976

47496 0500Z

47483

0430Z

47472
0400 Z

0330 Z

47458Y

47443

47424

0250 Z

0200 Z

47405

6 Dec 76

IG-13

GT2-2

0130Z 6 DEC, 1976 47393

0100Z 6 DEC, 1976 47381

0030Z 6 DEC, 1976 47374

0000Z 6 DEC 76 47364

2357Z
STEADY ON
0650

STARTING TURN,

2334Z, 0650

47359Z
2330Z

2300Z
5 DEC 76

47371

2230Z
5 DEC 76

47386

2200Z
5 DEC 76

47392Y

2200 47400
21302

2100Z 4740Z Dec. 5, 1976

2030Z 47416 Dec. 5, 1976

47431

2000 Z

Dec. 5, 1976

1930 Z

Dec. 5, 1976

47448

47465

1000 Z

14002

1830Z
Dec 5, 1976

47488

1800Z

47506

Dec 5 '76

47526

1730Z
5 Dec

1700Z
47546
5 Dec

47562
1630Z
5 Dec

47515 1600Z

47592
1530Z Dec 5

1500Z 5 Dec 76 IG-23 GT2-1
476108

47626
1400Z
5 Dec 1976

4C 1300

1330Z
5 DEC. 76

47652

1300Z 5 DEC. 76 47663

1230Z 5 DEC 76 47676V

476868

1200Z

5 DEC 76

478961

1130Z

476968

1100Z 5 DEC 76

47708V

477238
1030Z

477328
1000Z 5 DEC 76

0930Z 47741
DEC 5 '76

0900 Z

47746

DEC. 5, 1976

0830 Z

47746

DEC 5

0800Z
47744
DEC 5 '76

0730Z
47743

0700Z
47742

0630Z

47743

Dec 5, 1976

0600Z DEC 5 '76
47740

47739 Z
0530

47737
0500E

Ans

47736
04302
5 Dec

47737
0400Z

47738
0330Z
4 Dec 76

47744
5 Dec
0300Z

47748
5 Dec

47757 r

0200 Z
5 DEC 76

CIS 750 RPM

0154 Z

47768 r
0130 Z

01008 4777

DEC. 5, 76

47793 &

0030 z

47768 J
0000 Z 5 DEC 76

2343 Z
SDNDRUDY #2
RECORDING

47812 J 2330 Z
2325 Z C/S 800 RPM

47812 J
2300 Z 4 DEC 1976

2246 Z #1 GUN OUT
FIRING AT WILL

22302

478278
4 DEC 76

22002 DEC. 4, 1976
47841

21302 47861
Dec. 4, 1976

2100 47876

Dec. 4, 1976

2030Z 47884

Dec. 4, 1976

2000Z

47896

Dec. 4, 1976

1930 Z 47900

1900 Z

47911

Dec. 24, 1976

1830Z
47925

1800Z
DEC 4 '76
47936

1730Z
4 DEC 1976
47950

1700 Z 47966

1630 4783

Dec 4 1976

1600 Z

47984

4 Dec 76

1530Z 47969
4 Dec 1976

1500Z 4 Dec
47966

1430Z 47970
DEC 4 1976

1400Z 47980 DEC 4, 1976

1330Z DEC 4, 1976 47991

1300Z 4 DEC 76
47997J

1230Z 48000J

1215Z 2/C 1150

48007J
1200Z 4 DEC 76

1130Z 3 GUNS ON
48019t

— 1125Z NO GUNS

— 1115Z #3 GUN OUT

1100Z DEC 4, 1976
48032 t

1030Z 48046t

1009 Z

c/c 120°

01000Z 48065 Dec 3'76

0930 48086 Dec. 3, 1976

0900 Z 48089

Dec. 4, 76

0830 48124
Dec 4 '76

0800 48143

Dec. 3, 1976

0730

48168

Dec 3 '76

0700

48189

Dec. 3, 1976

48208

0630

Dec. 3 1976

48216 0600Z
4 Dec 1976

48231
4 Dec 1976

Dec 4 1976
48267

48285 0400
Dec 4 1976

48307
0330Z
4 DEC, 76

48323

0300Z

48334 0230Z

48343
0200 Z
4 Dec 76

48351 J
0130Z

0100 48360
124°

Dec 4, 1976

0030Z DEC 4, 1976 48368

0000Z DEC 4, 1976 38378

9/c 124° 38391
23 48Z

48407 r
2330z

2300z DEC. 3, 1976
48436

2230z
c/3 750 RPM
48467 r

2200 48500 210° ~5Kts.

2130 48531

Dec. 3, 1976 210° ~5Kts.

2115 c/c 215

2100 48545

Dec. 3, 1975

2030 Dec. 3, 1976 48530

48515 · 2000Z 30°

dead slow Dec. 3, 1976

1930 Z 30° dead slow Dec. 3, 1976 48500

1900 Z 48486
Dec. 3, 1976 30°
(dead slow)

1830 48479 30°
dead slow
Dec. 3, 1976

1800 48465 30°

Lead slow

Dec 3, 1976

48445

1730 Z

48428

1700 Z

48416 1630 Z

48394
1600 Z

48348
1530 Z

48349
1500 Z

1430 Z 48333

1414 Z C/C 30°

48336
1400 Z

49348 r
1330 z

c/c 235° 13:11 z

1300 z DEC. 3, 1976

48367

483918

1230Z

484151

1700Z

DEC 3 1976

484408

1130Z

1112Z
C/C 1900
C/S ADEAD SLOW

1100Z 3 DEC 76
48440t

48410t 1030Z

1000Z
48377t
3 DEC 76

0930 48345

0900 48320 Dec 3, 1976

005° ~4 KTS

10° ~4 KTS

48301

Dec 3, 1976

48278
0800Z

0730 48264
Dec. 3, 1976
10° * 3 Kts

0700 1900 ~4 KTS

Dec 2, 1976

46281

0630Z 48297

Dec. 2 1976

0600Z 48309L

48323

05302

0500 48339

0430 48357
IG-23

3 Dec 76

48378

0400Z
3 Dec 76
161-23

0330 48403

c/c 1950

0300 48406

0230 48377

0200 3 Dec 76

01308, 48331,
3 DEC

00308 48302

4/5 2KTS

2330Z
482634

9/ 005° (820)
2325Z

2300Z
482784

~~2200 Z~~
~~48285 J~~

2230 Z
DEC. 2, 1976
48301 J

2200 Z
DEC 2 '76
48311

48324
2130Z
DEC 2'76

48338
2100Z
DEC 2'76

418 321
DEC 2'76

48364 210° 10 Kts
2000 Z Dec. 2, 1976

48416 210° 10 Kts 1930 Z
Dec. 2, 1976

48477 10 Kts 213°
Dec. 2, 1976 1900 Z

48528 10 Kts 1830
Dec 3, 1976
213°

1800

48586
11 Kts. 213° Dec. 2 '76

1730Z

48645

1700Z

48700

1630Z

487658

1600Z 48840

1530Z 48902

1500

48956

1430Z

2 Dec 76

490118

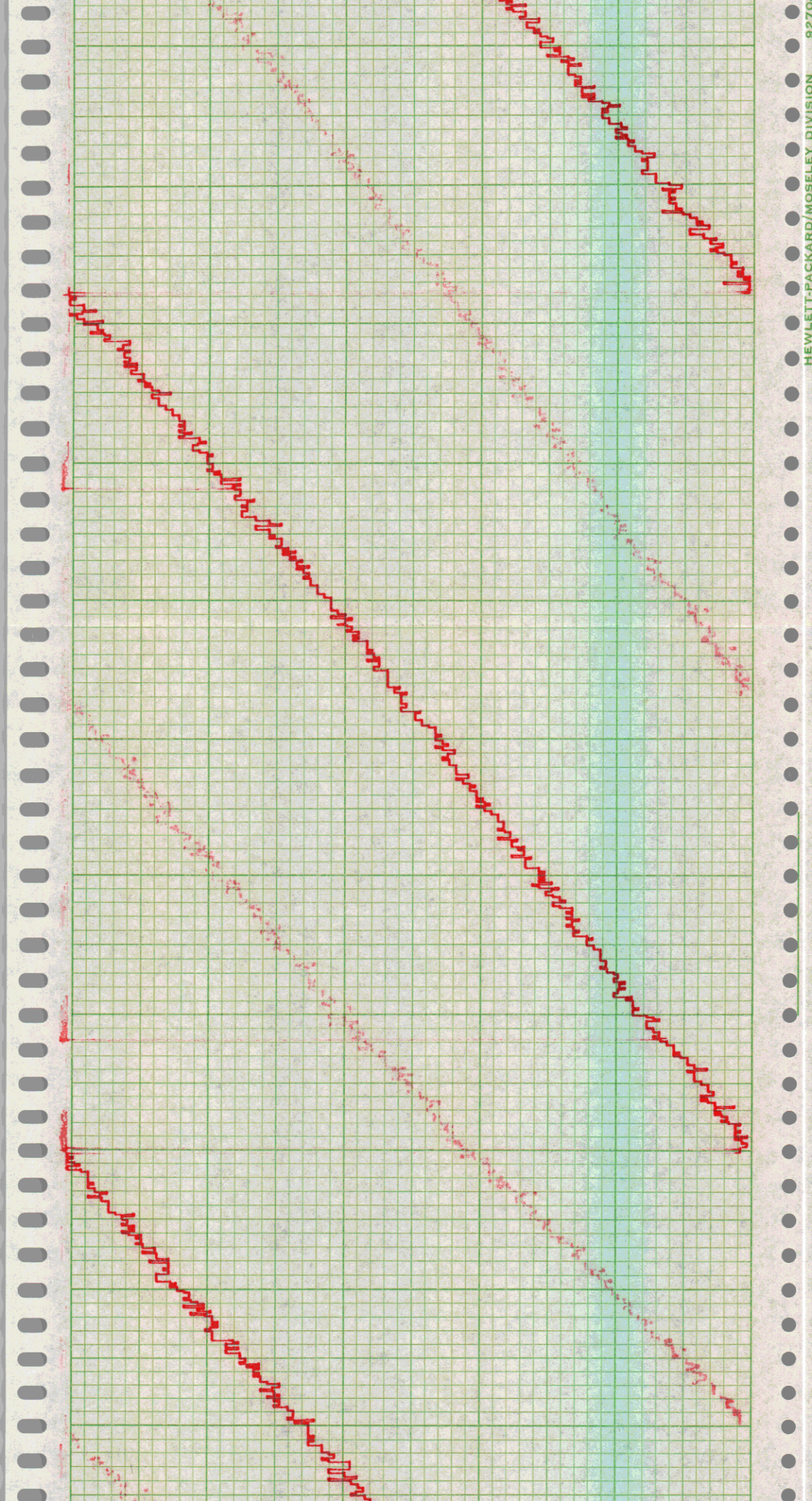
• 2 Dec 76

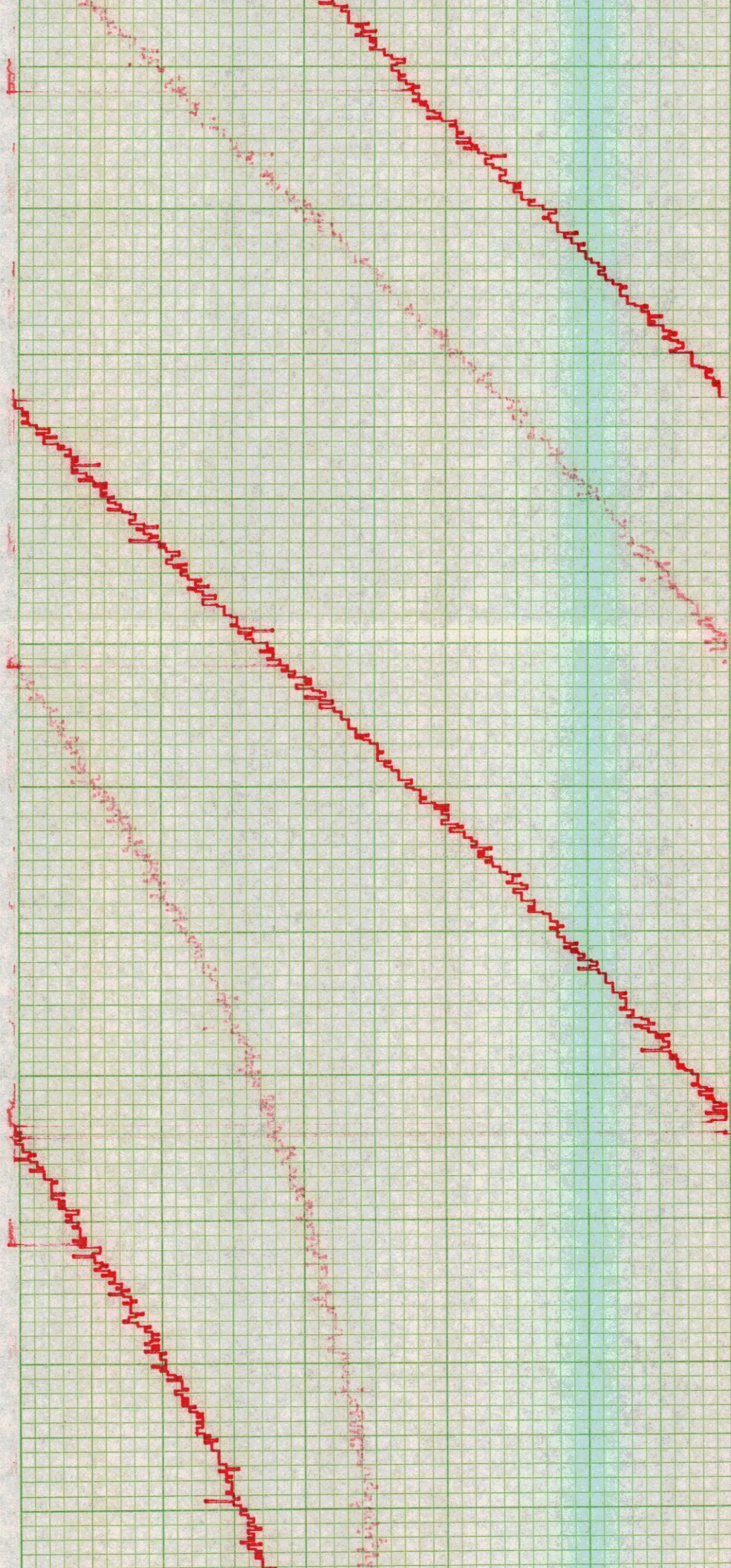
1400

49076

2100

1110TS





49560 175°

11 HTS

0930

Dec. 2 '76

49588

175°

11 Kts

Dec 2 '76

49658

175°

11 Kts

Dec 2 '76

49740 175

11°

2 DEC, '76

49815

175° 11Kts.

2 Dec. 1976

49881

190°

11Kts.

Dec 2, 1976

49943

190° 11 Kts

Dec. 2 1976

49984 190° 11 Kts.

Dec. 2 1976

0530Z 499948
190° 12 kts
2 Dec 76

0500Z 50009x

50040 0430Z

040050075

Power failure 50086 0355Z

0256Z

0230 50152

0204 50190 →

TG-23

~~12~~ 2 Dec 76

