

IG-23
LAST REC
OFF
1400Z
21 Dec

1400Z

21 DEC 76

50622d

1330Z
21 DEC 76 50663

1300Z
21 DEC. 76

50677

12302
21 DEC 76

50646

12002 21 DEC. 76 50601

11302
21 DEC. 76

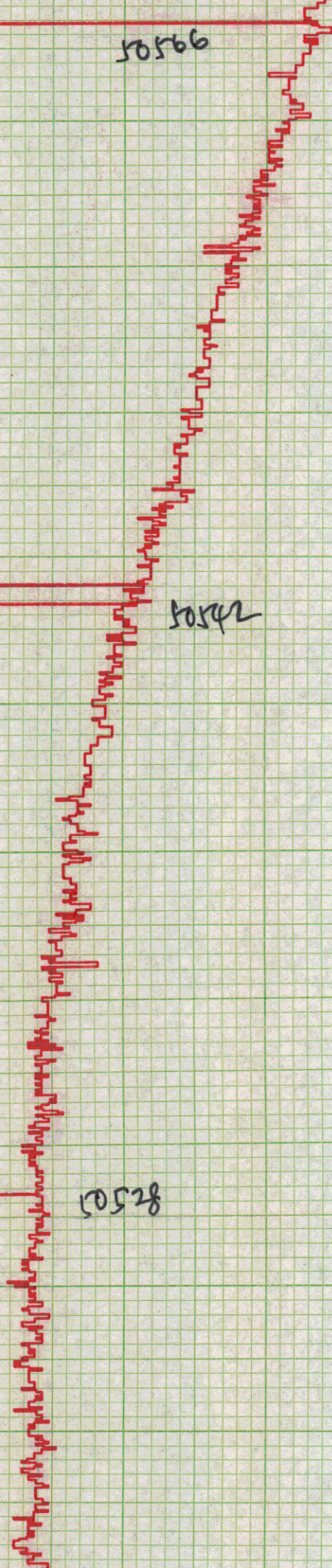
50566

11002
21 DEC 76

50542

50302
21 DEC 76

50528



1000Z
21 DEC 76
50533Z

0930Z 50546

Dec. 21, 1976
305° 7.7Kts.

0900

Dec. 21, 1976

7.7 Kts. 305°

50565

505808 08302

0800 505728
21 DEC '76

505508
0730Z

0700Z 505098
21 Dec 76

0630Z 504788

0600Z

504470

21 DEC 76

50420

0530

0500Z

50403

50396

0430 Z

21 Jan 76

0420 Z 50389

21 DEC 16

02302 50352
21 DEC 76

03002 50352

02302 50334
21 DEC 76

02002 50320
21 DEC 74

01302
21 DEC 76

50325

01002
20 DEC 76

50336

0030Z
50339

0000Z
21 DEC 76

50339

23302
20 DEC 76

50332

23002
20 DEC 76

50360

22302
20 DEC 76

50367

22008
20 DEC. 1976

50367

21308

50371

2100

50380

Dec 20 76

Dec 20, 1976

20302 50387

2000

50395

385°

Dec. 20, 1976

09302 50392

Dec. 20, 1976

19062
503818
20 Dec 76

1830 50374
Dec. 20, 1976

1800

50377

270°

10 Kts.

Dec. 20, 1976

1730Z

50386

1700

50399

50413

1630 Z

1600Z 50409

407

350

1530Z 50407

1500 50409

13302

20 DEC 76

50417

13008
20 DEC. 76

50422

12308
20 DEC. 76

50425

12002
20 DEC. 76

50445

1130Z
20 DEC. 76

50474

1100Z 50498
20 DEC.
1976

1030Z
20 DEC, 76

50545

20 DEC 76

1000 Z

505878

0930 Z
506308

0900Z
506508
20 Dec 76

0230Z
Z

END OF UT2-9

0800Z 506688
20 DEC 76

0730Z 231° 10KTS

20 DEC 76

0700Z

5068578

20 DEC 76

0630

50689

ON AT
0613Z 20 DEC 76
507038

0230Z
Z

END OF UT2-9

0143 2
IN A WELL REFILLED.