

IG-23-1

GT2-9

Dec 19, 1976

0130Z
506382

0100Z 20 DEC. 1976

50651

0030Z
50664+

6000Z
20 DEC. 76

50667

2330Z
50666+

2300 Z
50665 J

22308 19 DEC 76

50662

22002 19 DEC 76

50651

21553

WARNING

5 FEET TO END OF CHART

CLC 080°

2130Z
506258
19 DEC 76

5 FEET TO END OF CHART

2100Z

19 DEC 76

505852

2030 50542

DEC. 19, 1976
6 KTS 0750

2000 Z 505008

1930 Z

~~504510~~

50471

1400Z

50441

Dec. 19, 1976

60 Kts.

075°

1830Z

19 Dec 76

50407

1800Z

50370

1730 19 Dec 76 50348

1700Z 50307

1630 Z 50296

19 DEC 70

50241 1600Z

1530Z 50202
19 DEC 70

1500Z 50168
19 DEC 76

1430Z 50137
19 DEC 76

1400Z 50110
19 DEC 76

1330Z
19 DEC. 76

50088

1300Z 19 DEC 76

50075

1230Z
19 DEC. 76

50062

1200Z
19 DEC 76

50037

← 1130Z

500
160

1100Z 19 DEC 76

49987

1030Z

49970 f

1000Z
19 DEC 76

49956 f

0930 Z 49923

Dec. 19, 1976

340° 5.4 Kts

0900Z
498938
19 Dec 76

49860

08300

0800 49829

Dec. 19, 1976

5.5 Kts.

340°

0730Z 49792

0700Z
49758
19 DEC '76

0630Z 49730

Dec. 19, 1976 340°
4.5 Kts.

0600Z 49701 19 DEC '76

49674

0530Z

0500Z 49640

49615 0430Z

0400Z 49591
19 DEC 76

0330Z 49539
19 DEC 76

0300Z 49506

19 DEC 76

0230Z 49468
19 DEC 76

0200Z 49439
19 DEC 76

0130Z
19 DEC. 76

49425

0100Z
19 DEC 76 49412

0030Z 19 DEC 76

49396

6000Z 19 DEC. 1976

49377

493521

2330Z

2300Z

49316

18 DEC, 1976

2230 Z

49287 J

2200Z 19 DEC, 1976

49288

49273

340°

4.5 KTS

2130 Z

Dec. 18, '76

119247

2100 Z

18 Dec '76

c/c 340

2045

2030 Z 49215

Dec. 18, 1976

330°

4.5 KTS.

2000Z

49190

49168

Dec. 18, 1976

1930Z

320°

4.5 Kts.

1900Z

49155

18 Dec 76

1830 Z Dec. 18, '76
49143

4.5 Kts. 320°

1800 Z
49128

1730 49115

-49105

17002

16302

49094

49080
1600Z

1530Z 49059
18 DEC 76

1500Z 49040
18 DEC 76

1430 Z 49024
18 DEC 76

1400Z
18 DEC, 1976

1330Z 18 DEC. 1976 48986

1311Z c/c 320°

0100Z
18 DEC 76

48964 J

1230Z 48942
18 DEC 76

1200Z
18 DEC, 76

48924

1130Z
18 DEC, 1976

48911

15 DEC 76
1100Z

48903 Z

1030Z

18 DEC. 76

48901

~~1000Z~~
1000Z

48898

Dec. 18, 1976

330° 4.5 KTS.

0930Z

48880

Dec. 18, 1976

330° 4.5 Kts.

0900Z 48852

0830Z

48824 330°

Dec. 18, 1976 4.5 Kts.

0800Z 48806 Dec. 18, 1976

330°

4.5 KTS.

0930Z 48791 18 DEC 76

Dec. 18, 1976

48775

330°

4.5 KTS.

0700

Dec. 18, 1976

0630Z 48745

330° 4.5 KTS.

-0600Z 48704

a/c

486738
0530Z

0500 Z 48626

0430Z 48570

0400 Z 48529

0330Z 48481
18 DEC 76

0300Z 48449
18 DEC 76

0230Z 48421
18 DEC 76

0200Z 18 DEC. 76 48379

0130Z
18 DEC, 1976

48350

0100Z 48313
18 DEC. 76

0030Z
48260

0000Z 48212
18 DEC 76

23302

17 DEC. 76

A8220

23002

48246 ✓

17 DEC 1976

22302

48257

✓

2212 o/c
3500

22802
17 DEC. 1976

48267

2130 48267

3450 465/152

Dec. 17, 1976

21002
48250

20302
48218
17 Dec 76

2000

Dec. 17, 1976

48171

350°

4 KFS

1930Z
48112
17 DEC '76

1900Z
48062
17 DEC '76

1830Z
48022
17 DEC '76

1800Z 48001

1730Z 48014

17 DEC 96

1700Z 48006

17 DEC 76

16302 47959
17 DEC 74

16002 47901

1530Z 49842
17 DEC 76

1500Z 47794

1430Z 47753
17 DEC 76

1400 Z
47712

17 DEC 76

0130 Z
47653

0100 Z
17 DEC 76

475521

1230Z

652-61-9

4C335°

47523

1200Z
47510

17 DEC 76

11302
17 DEC, 76

47515

11002
17 DEC, 76

47541

10902 17 DEC. 1976

47600

1000Z 17 DEC 76
47629 J

0930Z
47623
17 DEC 76

0900Z
47618
17 DEC 76

0830 Z
47626

17 Dec. '76

47585

065°

4.5 KTS.

0800 Z

17 Dec. '76

0730 Z
47556

065° 4.5/145

0700Z
17 DEC '76
47534

0630Z
47514

0600Z

47496

Dec. 17, 1976

55°

4.5Kts.

47483 0530Z

47473

0500Z

47467
0430Z

0400Z
47467

0330Z
47467

03002
47468

47471
02302

0200Z 474758

0151Z
0650, BEGIN
LIVE UT2-01-8

0141Z
BEGIN c/c 0650

0130Z 47498
17 DEC 76

0100Z
17 DEC 76

475342

00302
17 DEC 76

47573

00002
17 DEC 76

47610

23302

47643 J

2300Z 476601

2230Z
16 DEC 1976

47668

2200Z
11 DEC 1976

47678

16 DEC. 1976

47691 16 DEC 76
2130Z

2100Z
16 DEC 76
47700

2030Z
16 Dec 76
47714

2000Z
16 Dec 76
47739

1930Z
47763
16 Dec 76

1900Z 47778

Dec. 16, 1976

1450 4.5 KTS.

1830Z
16 Dec 76
47804

1800Z
47826
16 Dec 76

1730Z 47950
16 DEC 76

1700Z 47868
16 DEC 76

1630Z 47894

16 DEC 76

1600Z 47911

16 DEC 76

1530Z 47914

16 DEC 76

1500Z 47917
16 DEC 76

1430Z 47922
16 DEC 76

1400Z
47923
16 DEC 76

13302

47940

16 DEC. 1976

4/s 350RPM

13002

47945

47959

1225Z BEGIN
GT2-61-7

1215Z C/C 1550
C/S 600 RPM

1200Z
16 DEC. 1976

47994

1130Z
16 DEC 76

48031

C/C 180°
C/S 750 RPM

SPEED NOT IN-
CREASED @ 1000Z

1100Z
16 DEC. 1976

48065

1030Z

480

~~8~~ 90

CIC 2050
CIS 250 RPM

END OF VTR 61-6

1000Z

48093

16 DEC 76

0930Z 16 DEC 76
48107

0900 48100

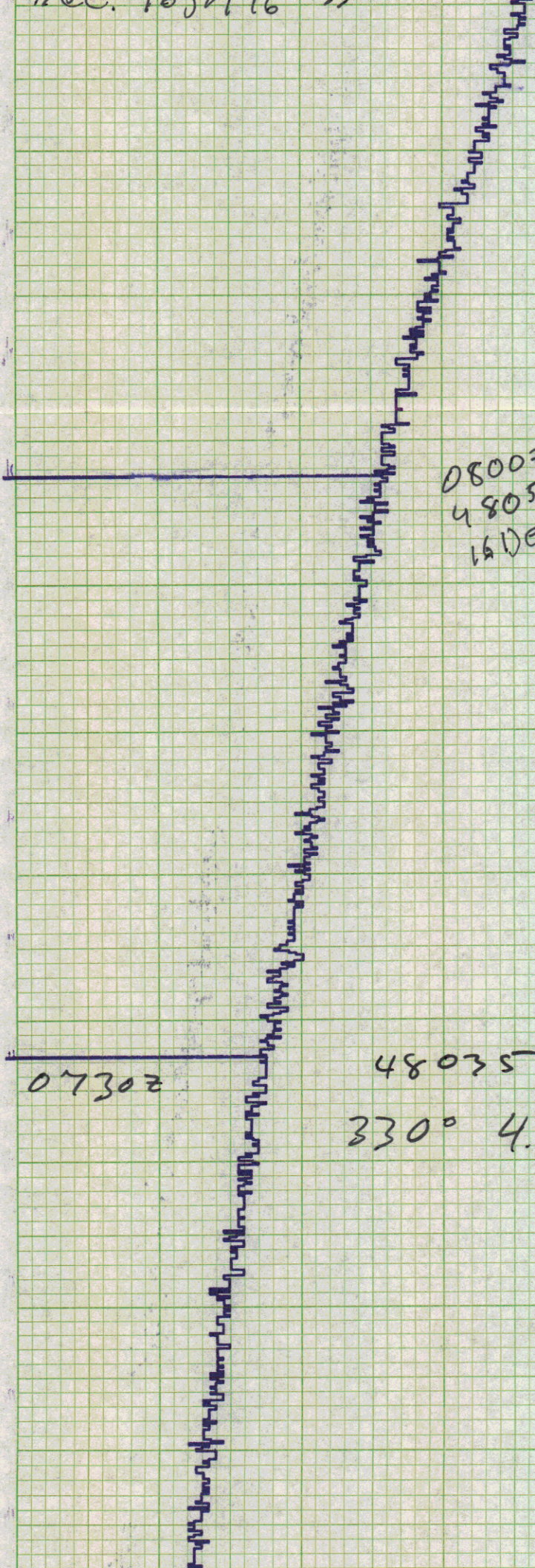
0830 48077

Dec 16-1976 336°

115 K4

Dec. 16, 1976

4.5 HTS



0800Z
48052
16 Dec 76

0730Z

48035 Dec. 16, '76
330° 4.5 HTS

0700Z
48023
16 Dec 76

0630Z
16 DEC 76
48012

0600Z 16 DEC 76 480
4299Z

0530Z 47980

16 DEC 76

0500Z 47965

16 DEC 76

0430Z 47953

16 DEC 76

0400Z 47940
16 DEC 76

0330Z 47933
16 DEC 76

0300Z 47907

16 DEC 76

0230Z 47871

16 DEC 76

47838

0200Z

16 DEC 1976

9308

47807

16 DEC 76

01002

47774

16 DEC 76

start record GTZ-G1-6

$\frac{1}{2}$ 530 RPM

c/c 335^d

00302

47762

16 DEC. 1976

$\frac{1}{2}$ 335^d

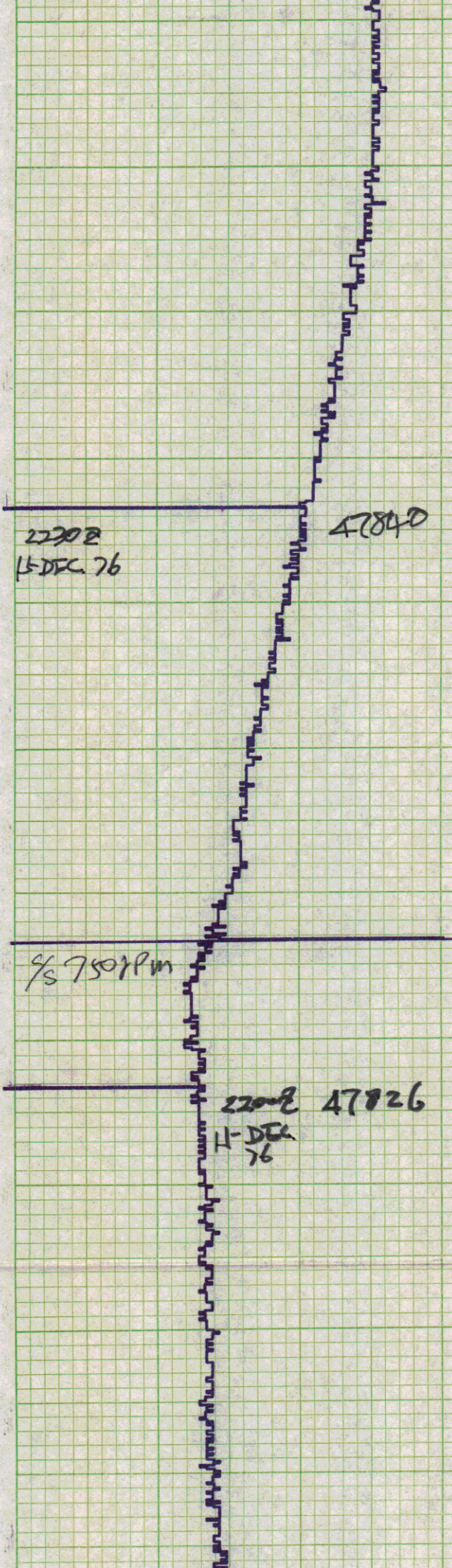
00002 16 DEC. 76 47789

23302
15 DEC. 76

47820

23002 15 DEC. 76

47849



22002
15 DEC 76

47840

4/5 7507 PM

22002 47826
11 DEC 76

c/c 220°

2130Z
47830

15 Dec 76

2100Z
47843

2100Z 130°

2030Z

CLC 170° 2025

2000Z
47588

1930Z
478916

1900Z 15 DEC 76
47945

47971 18302
2081 1764
15 DEC 70

47982 18002 15 DEC 76

1730 Z 47989
15 DEC 76

7700 Z 47992

1640 Z

1637 Z 15 DEC 76
IG-23

