

Final Port
Galveston
Ship's course log
6-Sept-75
IG 15-6

1230 303° 9.1 kts

1200Z 303° 9.1 kts

1130Z 303° 8.1 kts

RECEIVED

RECEIVED

0 1 2 3 4 5 6 7 8 9 10

RENEW

1100Z 303° 8.1kts →

0 1 2 3 4 5 6 7 8 9 10

RENEW

1030Z 303° 8.1kts →

RENEW

10002 303° 8.1 kb

→

6/9/75

RENEW

09302 303° 8.3 kb

→

RENEW

0900 303° 8.3 kb

0

1

2

3

4

5

6

7

8

9

10

0

1

2

3

4

5

6

7

8

9

10

0830 303° 8.3/kb

0800 303° 8.3/kb

0730 303° 8.3/kb →

RENEW

RENEW

0700Z 303° 8.4 kts

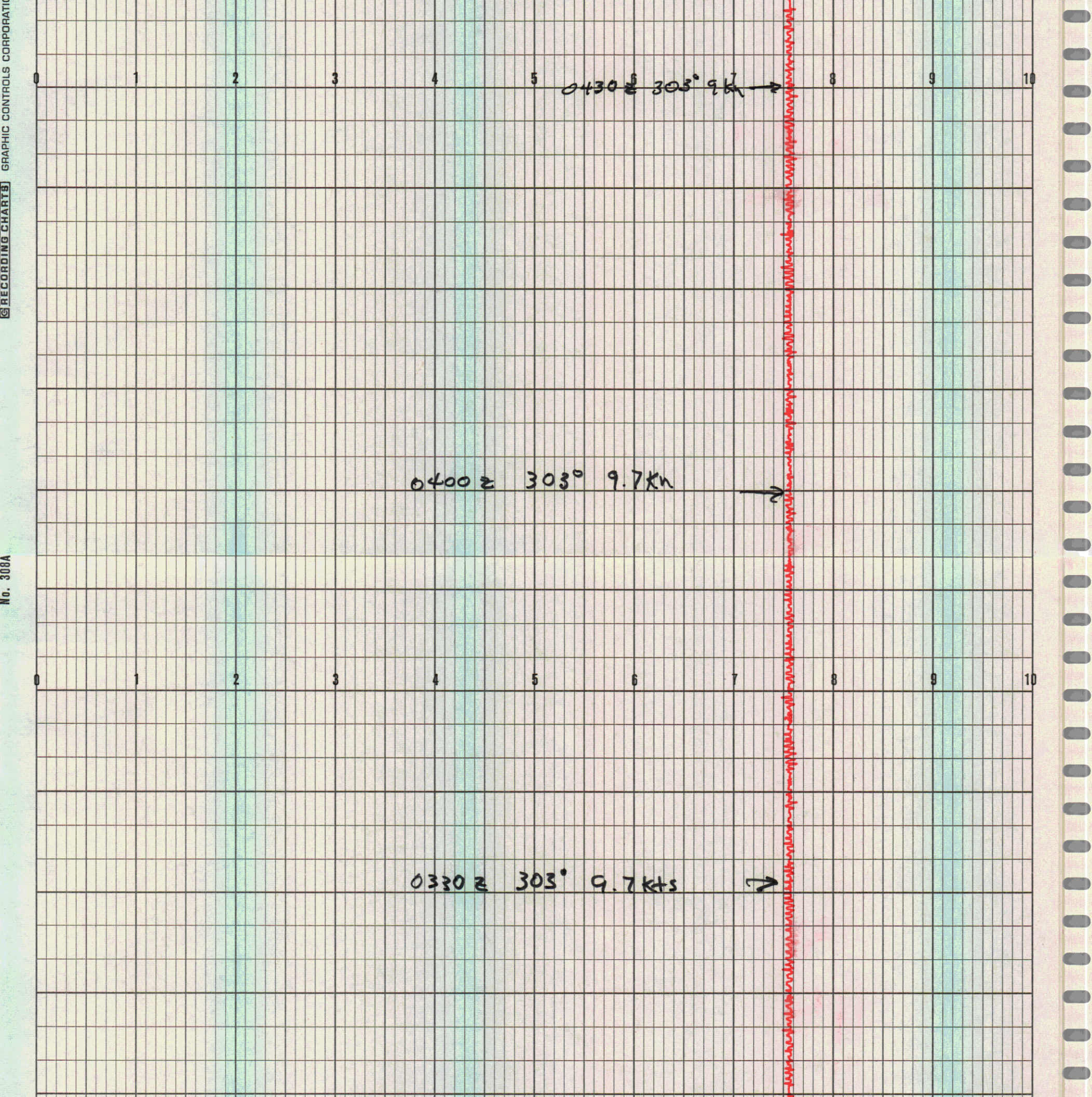
0630Z 303° 8.4 kts

Recalibrate

0600Z 303° 8.4 kts

0530Z 303° 9 kts

0500Z 303° 9 kts →



0 1 2 3 0300Z 4 303° 5 9.7 kts 7 8 9 10

0230Z 303° 9.7 kts 1

0 1 2 3 4 5 6 7 8 9 10

0200Z 303° 9.6 kts 7

0 1 2 3 0130Z 303° 9.6 kts 7 8 9 10

0100Z 303° 9.6 kts

0 1 2 3 4 5 6 7 8 9 10

0030 303° 9.9 kts —

0013 303° —

000025 305° 9.9 kts — 6 Sept. - 750

2.3302 305° 9.9 kts —

0 1 2 3 4 5 6 7 8 9 10

2300Z 305° 9.9 kts

2200Z

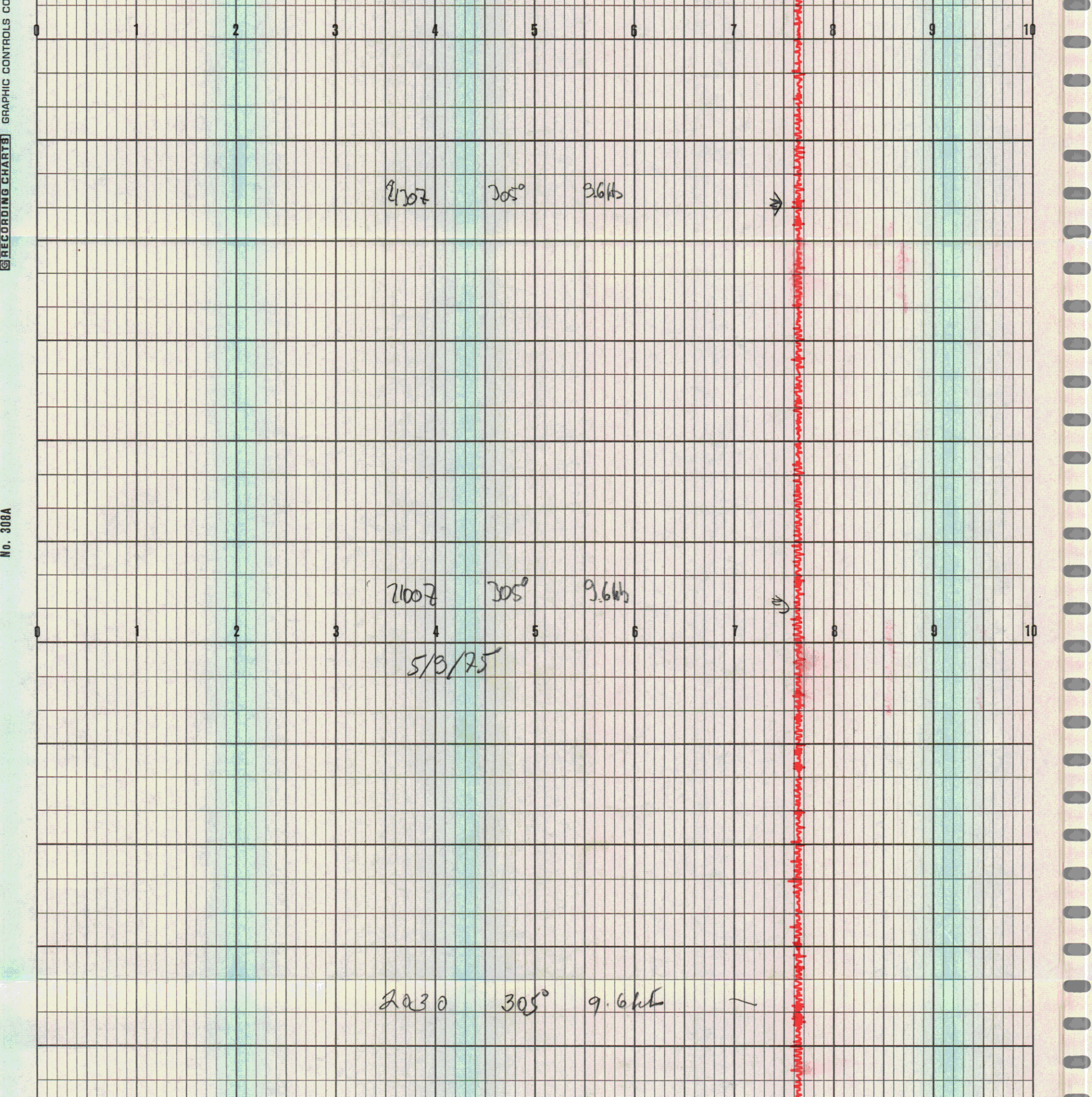
305°

9.9 kts

2200Z

305°

9.6 kts



0 1 2 3 4 5 6 7 8 9 10

2000 305° 9.5 Kts —

0 1 2 3 4 5 6 7 8 9 10

1930 305° 9.5 Kts —

1900Z 305° 9.1 Kts —

1830 305° 9.1 Kts —
1827 c/c 305 —

1800Z 308° 9.1 Kts —

1730Z 308° 9.1 Kts

1702 c/c 308°

1700Z 310° 9.1 Kts

1630Z 310° 9.1 Kts



1600 Z 310° 9.1 km



1530 Z 310° 9.1 Kts



1500 Z 310° 9.3 Kts



1430Z 310° 9-3 kb —

1400Z 310° ~~10-3~~ 10-kb —

1330Z 310° 9.6 kts —

1300Z 310° 9.6 kts —

1230Z 310° 10.3 kts —

1200Z 310° 10.3 kts

1130Z 310° 10.3 kts

1100Z 310° 10.3 kts

107307 310° 9.3145 7.0560

10007 310° 9.3145 7.0560

107307 310° 9.3145 7.0560

09007

310°

9.3145

→

0830

310°

9.3145

—

0800Z 310° 9.3 kt

—

0730 310° 9.3 kt

—

0700E 310° 9.6 kts

—

0 1 2 3 4 5 6 7 8 9 10

0630Z 310° 9.1 kts

0 1 2 3 4 5 6 7 8 9 10

0600Z 310° 9.1 kts

0 1 2 3 4 5 6 7 8 9 10

0530Z 310° 9.1 kts

0 1 2 3 4 5 6 7 8 9 10

0500Z 9.1 KTS 310° —

0430Z 9.1 KTS 310° —

0 1 2 3 4 5 6 7 8 9 10

0400Z 9.1 KTS 310° —

0 1 2 3 4 5 6 7 8 9 10

0300Z 9.5kt 310°

0320 9.5kt 310°

0300Z 300° 7.5kt

0 1 2 3 4 5 6 7 8 9 10

0230Z 300° 9. kt

0200Z 300° 8.4 kt

0130Z 300° 8.4 kt

0124Z 4c 300°

0100Z 293° 9.4 kts —

0030Z 293° 9.4 kts —

0000Z 293° 9.4 kts — 5-Sept-75

2330Z 293° 9.4 kts —

2321Z ~~293°~~ 293° —

2300Z 300° 11 kts —

22 30Z 300° 11 kts →

0 1 2 3 4 5 6 7 8 9 10

22 09Z 40 300°

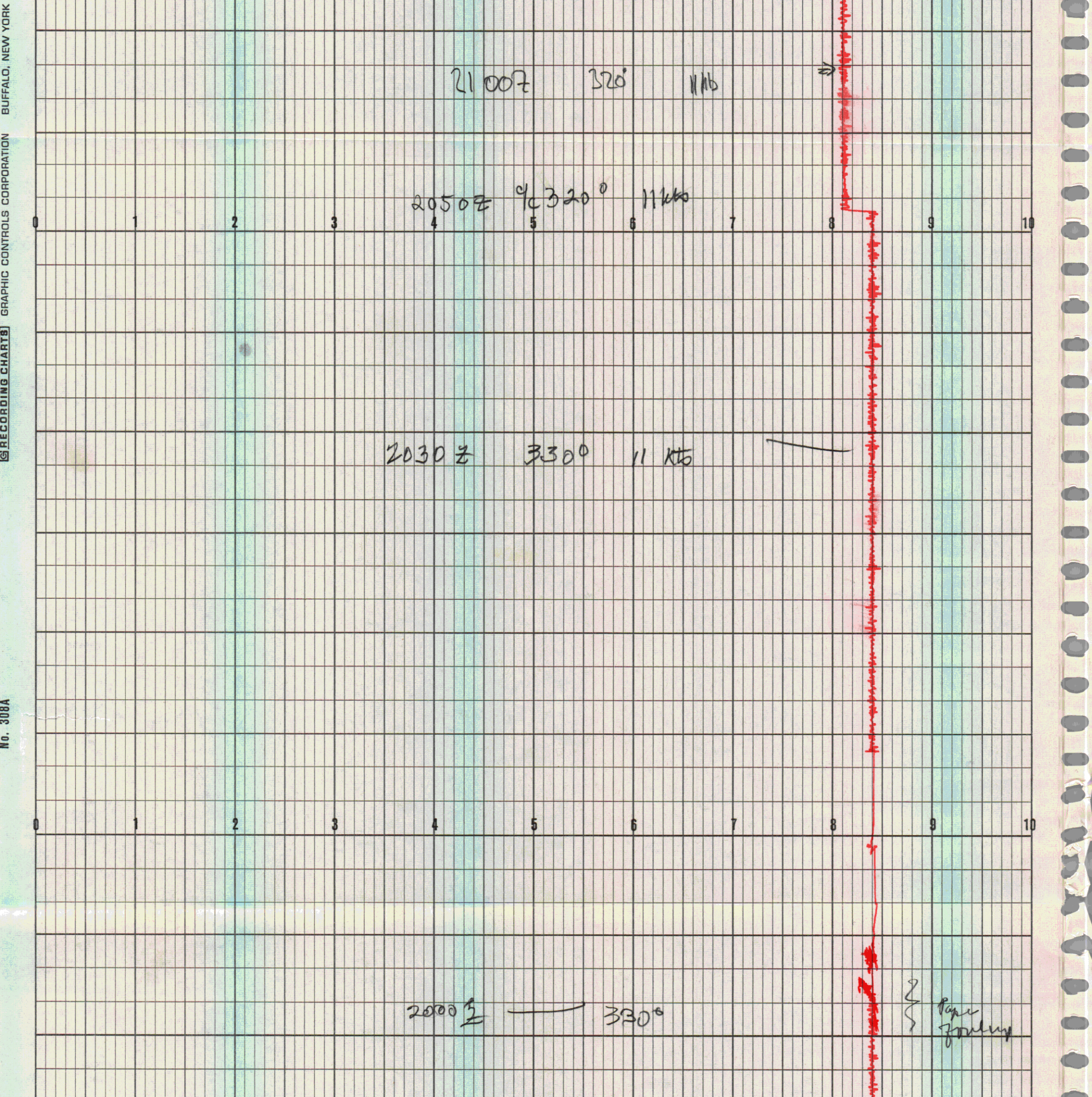
22 00Z 320° 11kts



0 1 2 3 4 5 6 7 8 9 10

21 30Z 320° 11kts





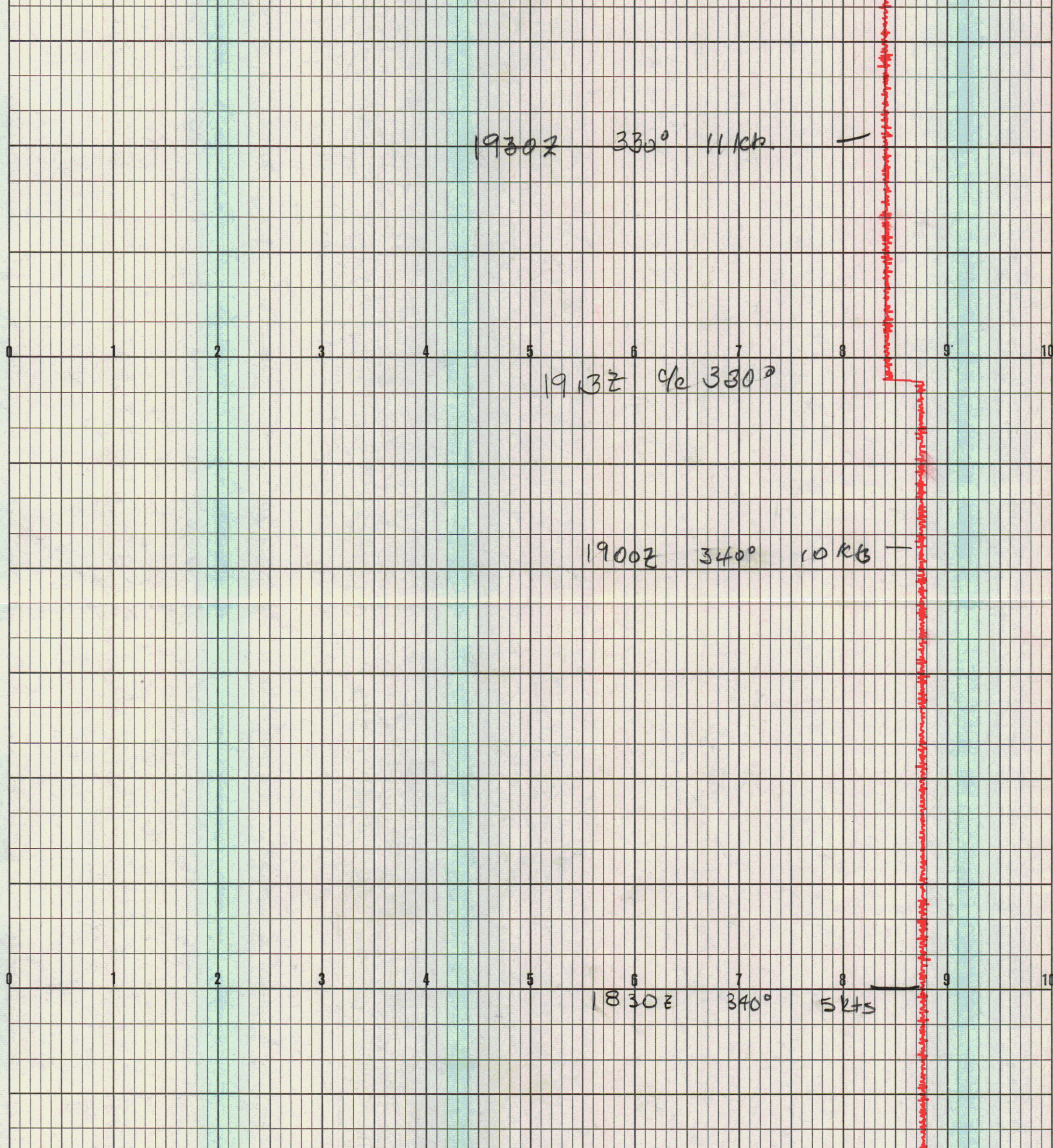
2100Z 320° 11MB

2050Z 320° 11kts

2030Z 330° 11 kts

2000Z 330°

Paper fouling



0 1 2 3 4 5 6 7 8 9 10

1800Z 340° 5kts

1730Z 340° 10kts

0 1 2 3 4 5 6 7 8 9 10

1700Z 340° 10kts

1630.2 355° 10 Kts

1633.2 c/c 340°

1600.2 355° 10 Kts

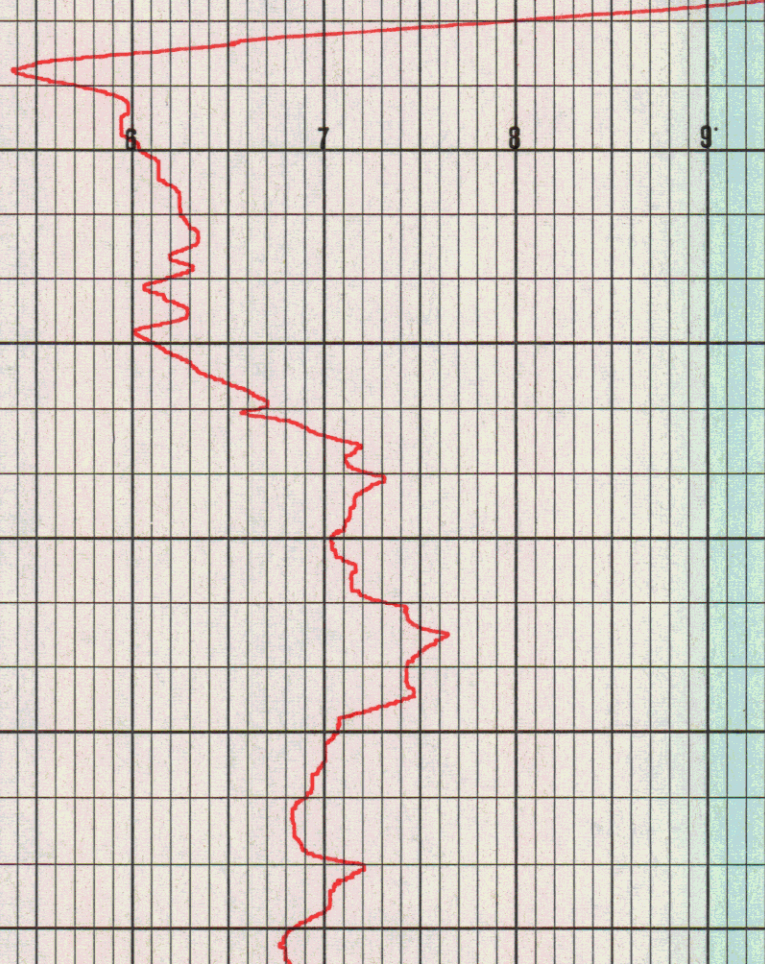
1530Z

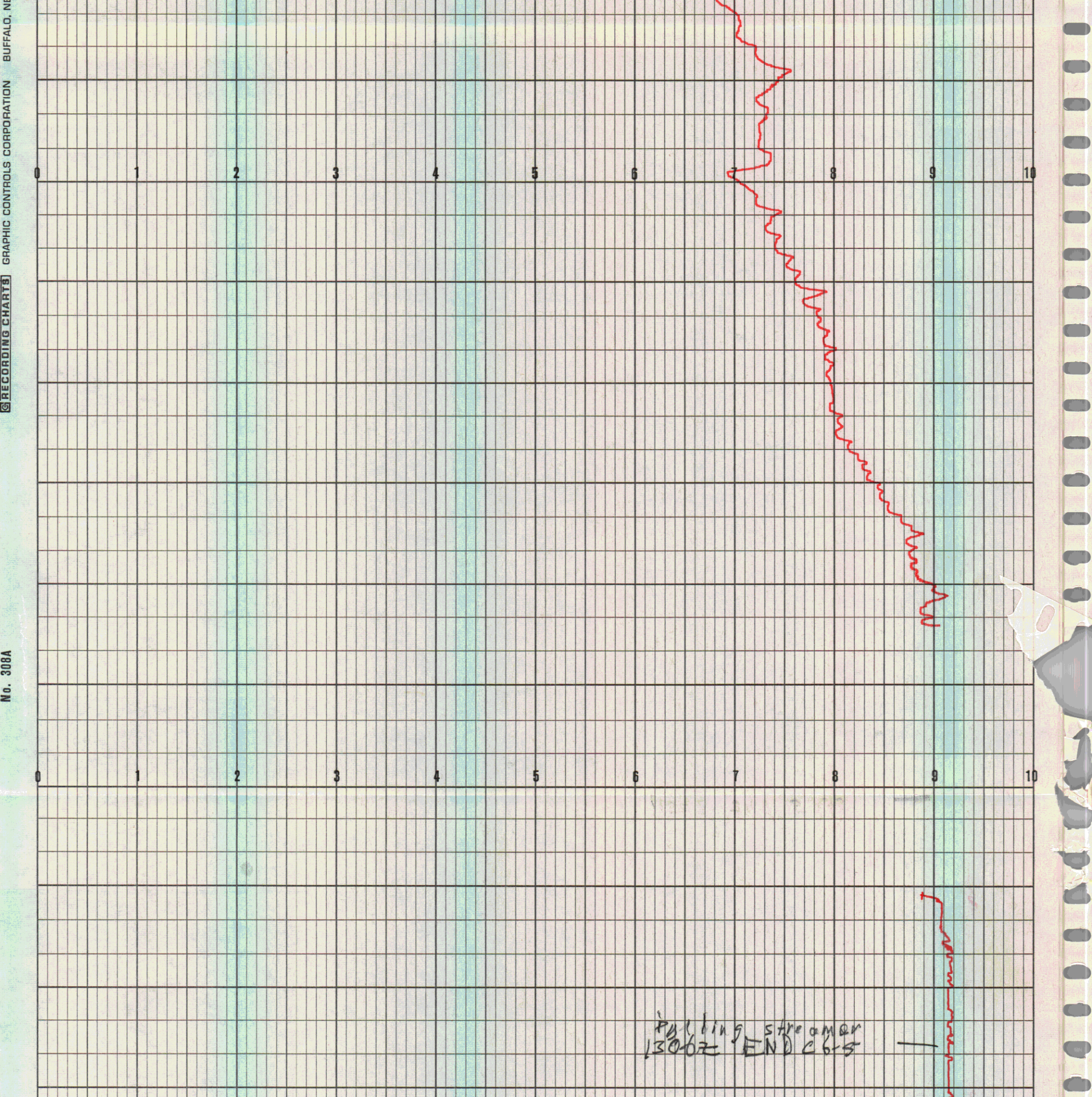
350°

10 K₁₃

—

Sept 4, 75





Buffalo, N. Y.
GRAPHIC CONTROLS CORPORATION
RECORDING CHARTS
No. 308A

putting streamer
130-67 END 26-5

1300Z 348° 6.4kts —

1230Z 348° 6.4kts —

1200Z 348° 6.4kts —

1130Z 348° 5 kts

1100Z 348° 5 kts

1030Z 348° 5 kts

1000Z 348° 5kts

0930Z 348° 5kts

0900Z 348° 5kts

0830Z 348° 5kts

0800 348° 5kts

file paper

0 1 2 3 4 5 6 7 8 9 10

0730Z 348° 5kts

0 1 2 3 4 5 6 7 8 9 10

0700Z 348° 5kts

0630Z 348° 5kts

0 1 2 3 4 5 6 7 8 9 10

0600 348° 5 kts

0546Z C/C 348°

0530Z 352° 5.0 kts

0 1 2 3 4 5 6 7 8 9 10

4 Sept 75

0500Z 352° 5.1 kts

0 1 2 3 4 5 6 7 8 9 10
04302 352° 5.1kts →

0400Z 352° 5/kts →
0356Z c/c 352

0 1 2 3 4 5 6 7 8 9 10

0330Z 255° 4.8 kts

>

Sept 4, 75

0300Z 355° 74.8 kts

9

0230Z 355° 4.8 kts

—

0200Z 355° 5 kts

0130Z 355° 5 kts

0100Z 355° 5.4 kts

0051Z fix & aper Jam

SEPT 4, 1975

0030Z 355° 5.4 kts —

0000Z 355° 5 kts —
4-SEPT, -75

2330Z 355° 5 kts —

0 1 2 3 4 5 6 7 8 9 10

2300Z 355° 5 kts

2230Z 355° 5 kts

2100Z 355° 5 kts

355° 2150z
fix Paper jam

2130z 355° 5kts

2100z 355° 5kts

fix paper jam

2030Z

355°
5kts

—

2000Z

355°

5kts

—

1930Z

355°

5kts

—

0 1 2 3 4 5 6 7 8 9 10

0 1 2 3 4 5 6 7 8 9 10

1900Z 355° 5kts.

five paper

1830Z 355° 5kts

1800Z 355° 5kts

1730 355° 5 kts

1700Z 355° 5 kts

1630Z 355° 5 kts

160 GZ c/c 355° 9/5 500 R/M

1600 Z 340° 4.5 Kts
5.7 Kts

Quick Read

paper feed

1530Z 340° 4.5 Kts

1500 Z 340° 4.5 kb

340° 4.5 kb

1430 Z

1429 Z

IG 15-6 ST Thomas to Galveston

COURSE LOG

ON 1429 Z Sep 03. 75

Boj. Lat. $18^{\circ} 38'$
Long. $-85^{\circ} 26'$

