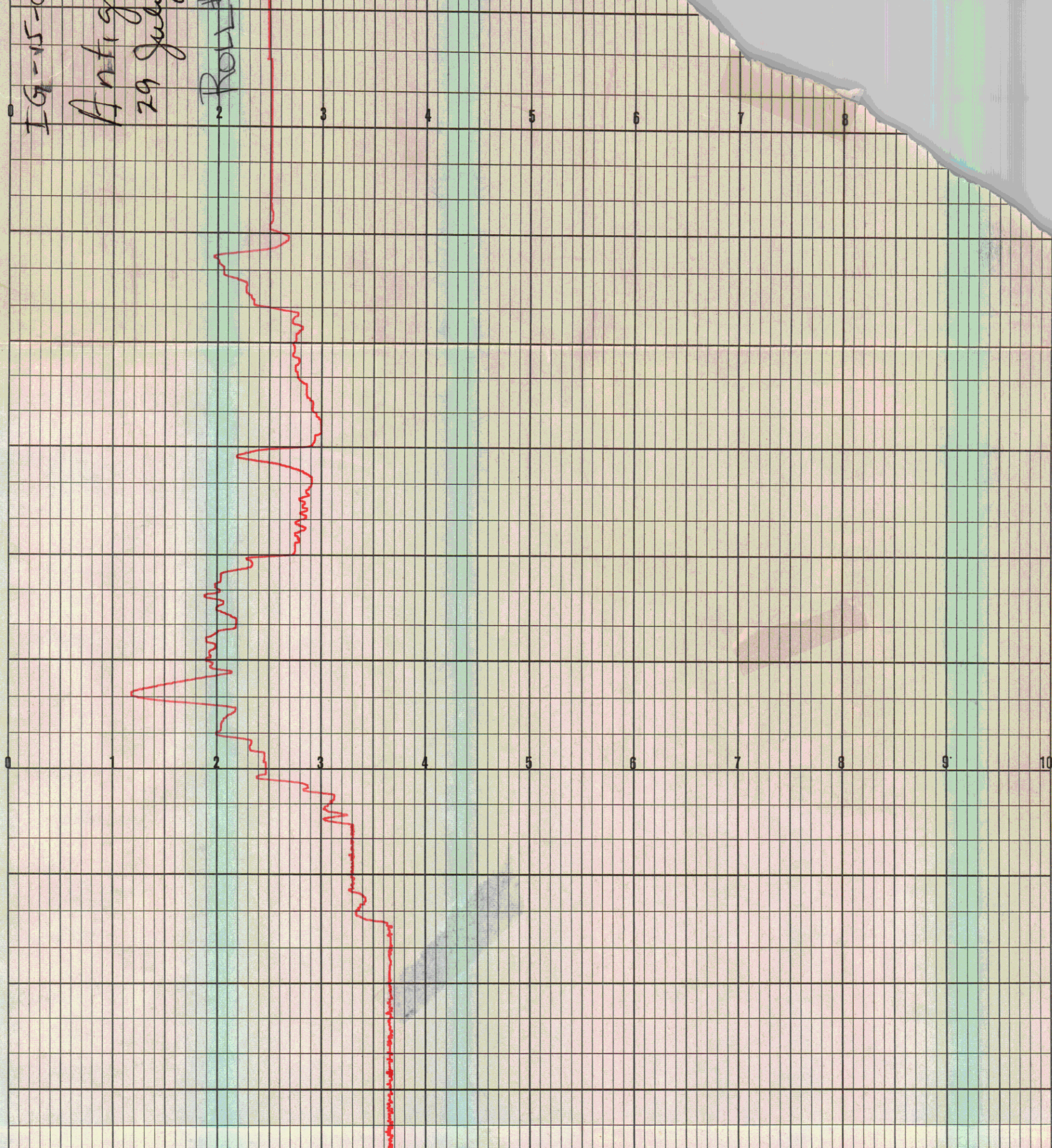


PRINTED IN U.S.A.

Antig
29 July

2



0 1 2 3 4 5 6 7 8 9 10

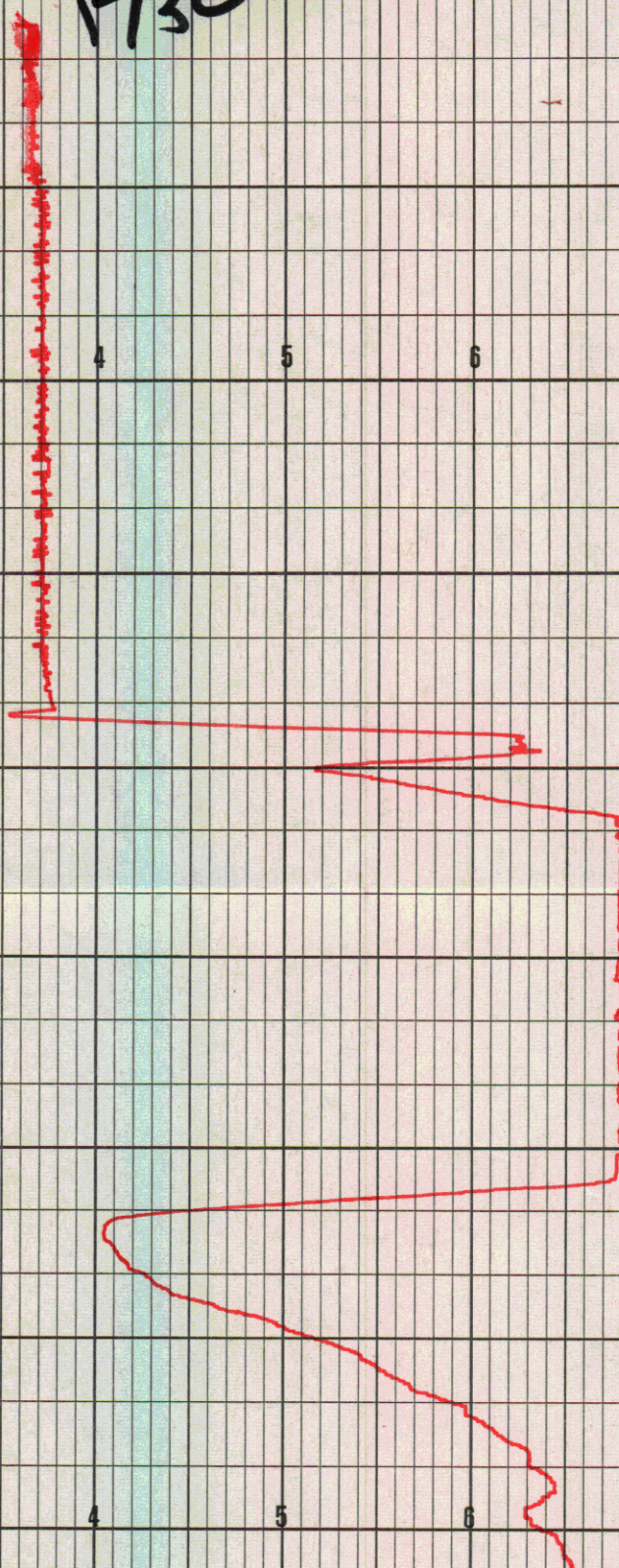
- 1407 2 140°

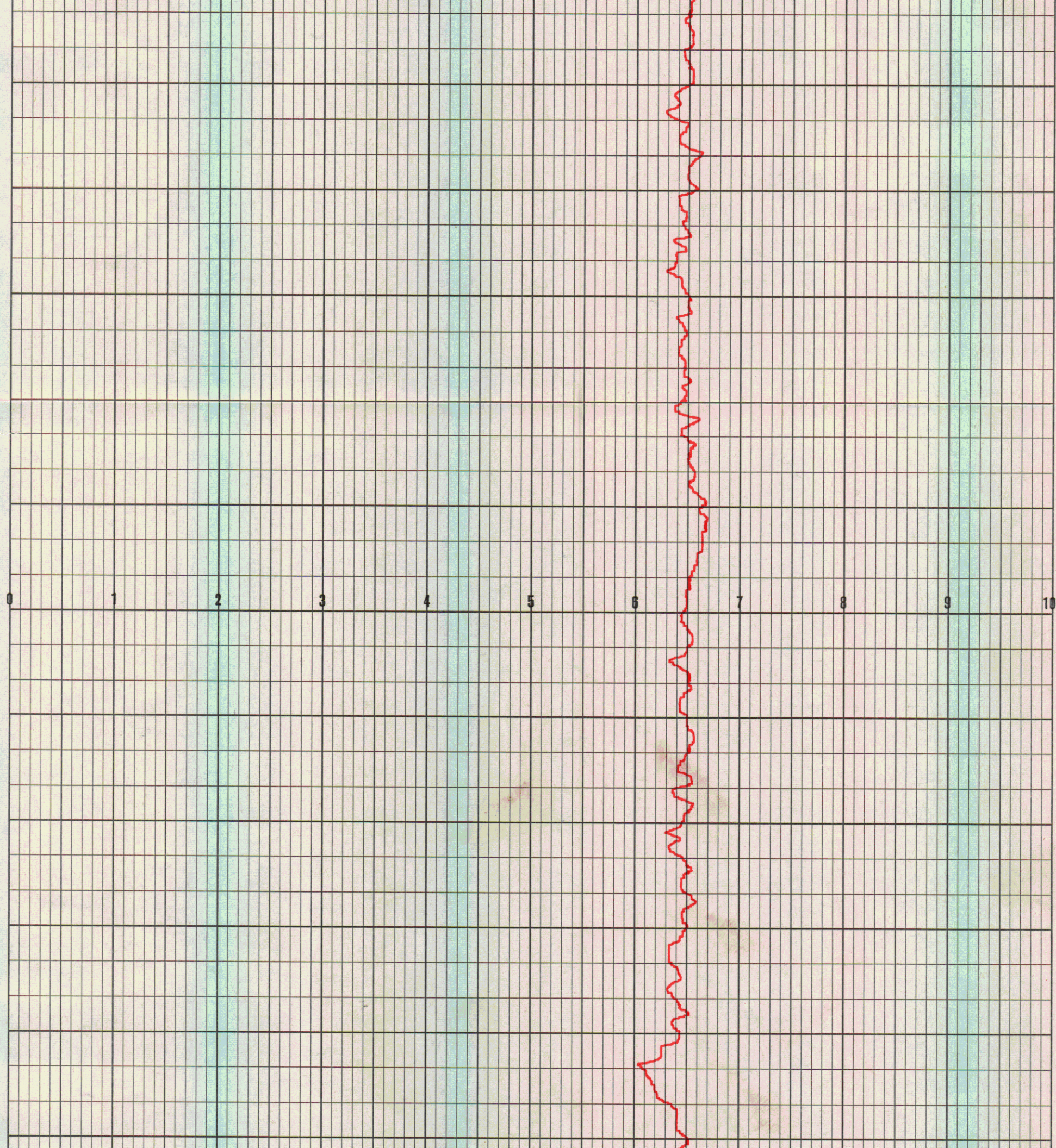
0 1 2 3 4 5 6 7 8 9 10

1811 2 145°

~~1732~~ E 1732 Z
K45
K45

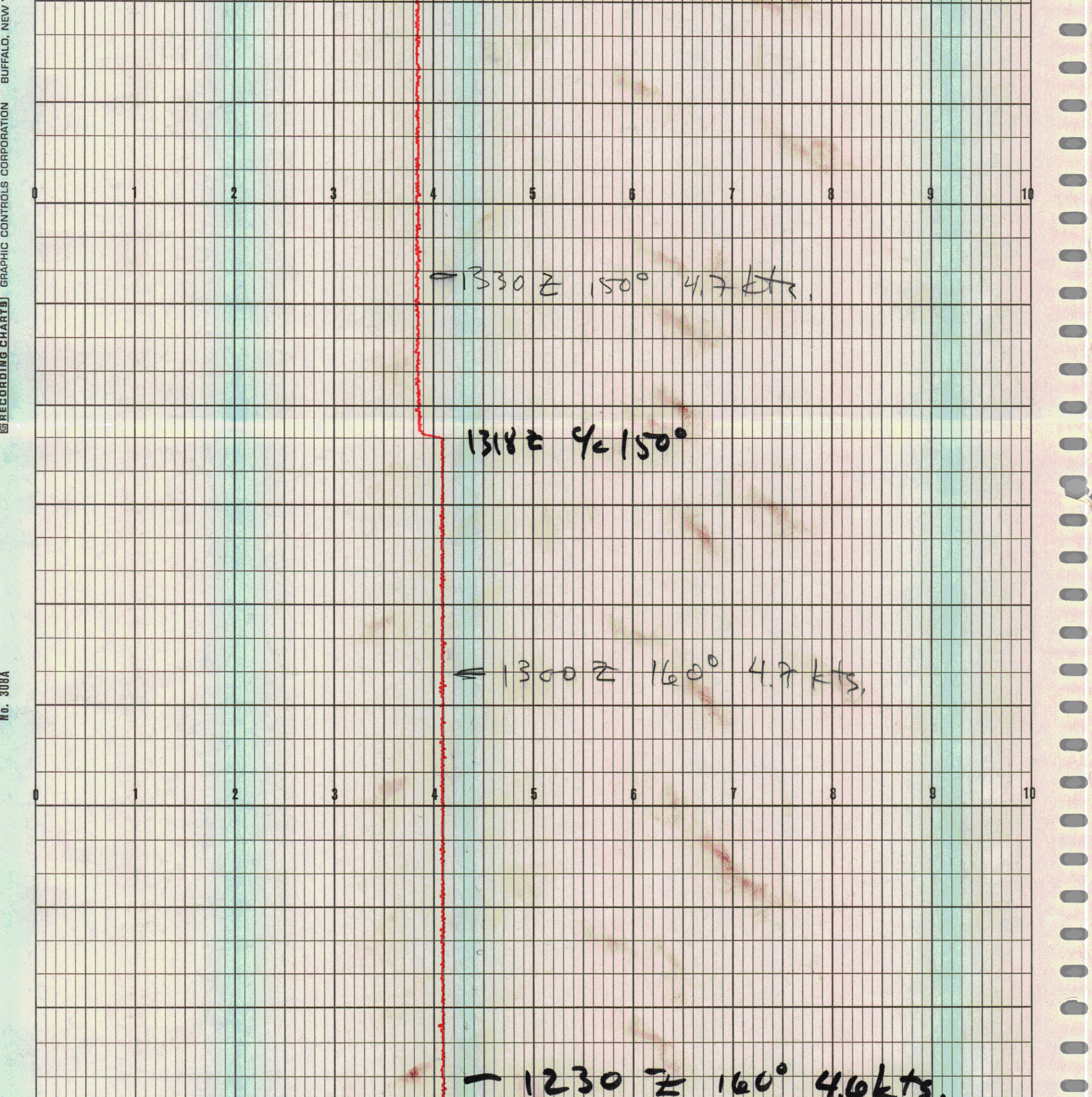
1730Z 145





— 1430Z 150° 4.7 kts.

— 1407Z 150° 4.7 kts.



RECORDING CHARTS GRAPHIC CONTROLS CORPORATION BUFFALO, NEW YORK

No. 308A

- 1200 Z
160°

- 1130 Z 160° 4-5 kts

c/c 160 1124 Z 4.6 Kts

29/7/75
TZ +4

- 1100 Z 165°
~~165°~~ 4.6 kts

- 1030 Z
165° 4.6 kts

1000

165° 4.6 kts

0930Z

160°

3.7 kts

0900Z -
160°
3.3 kts

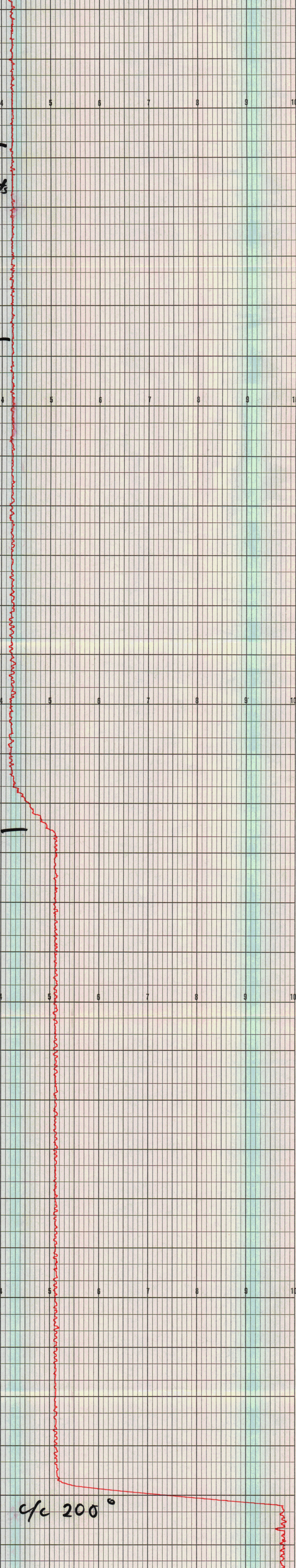
0830Z -
160°
3.4 kts

0800Z 160°
4.5 kts

0740 c/s -
550 RPM

0715 c/c 165 -

0535 c/c 200°

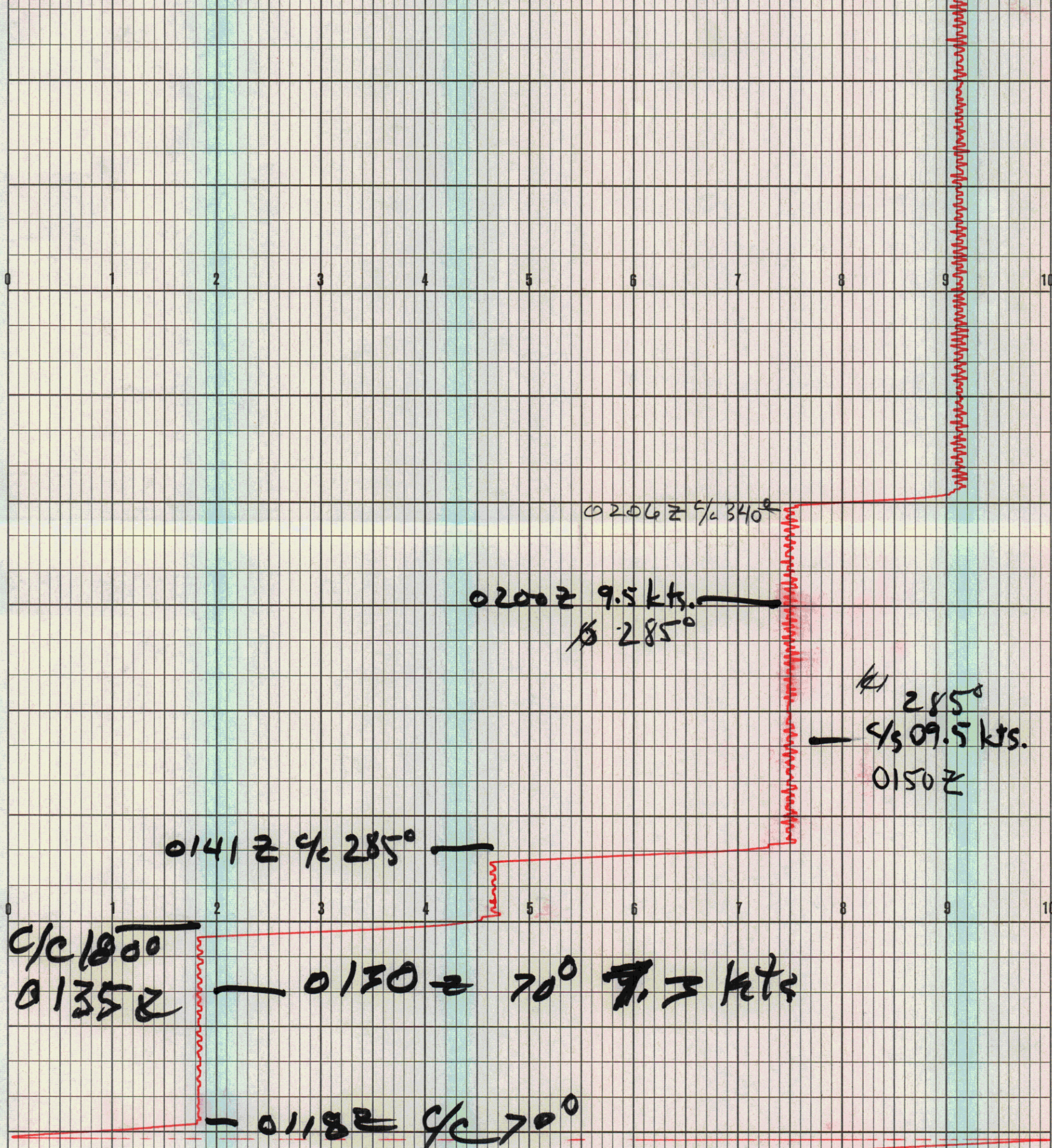


0 1 2 3 4 5 6 7 8 9 10

0 1 2 3 4 5 6 7 8 9 10

04322
C/C 000

0300Z —
9.5 kts. $\frac{9}{16}$ 345°

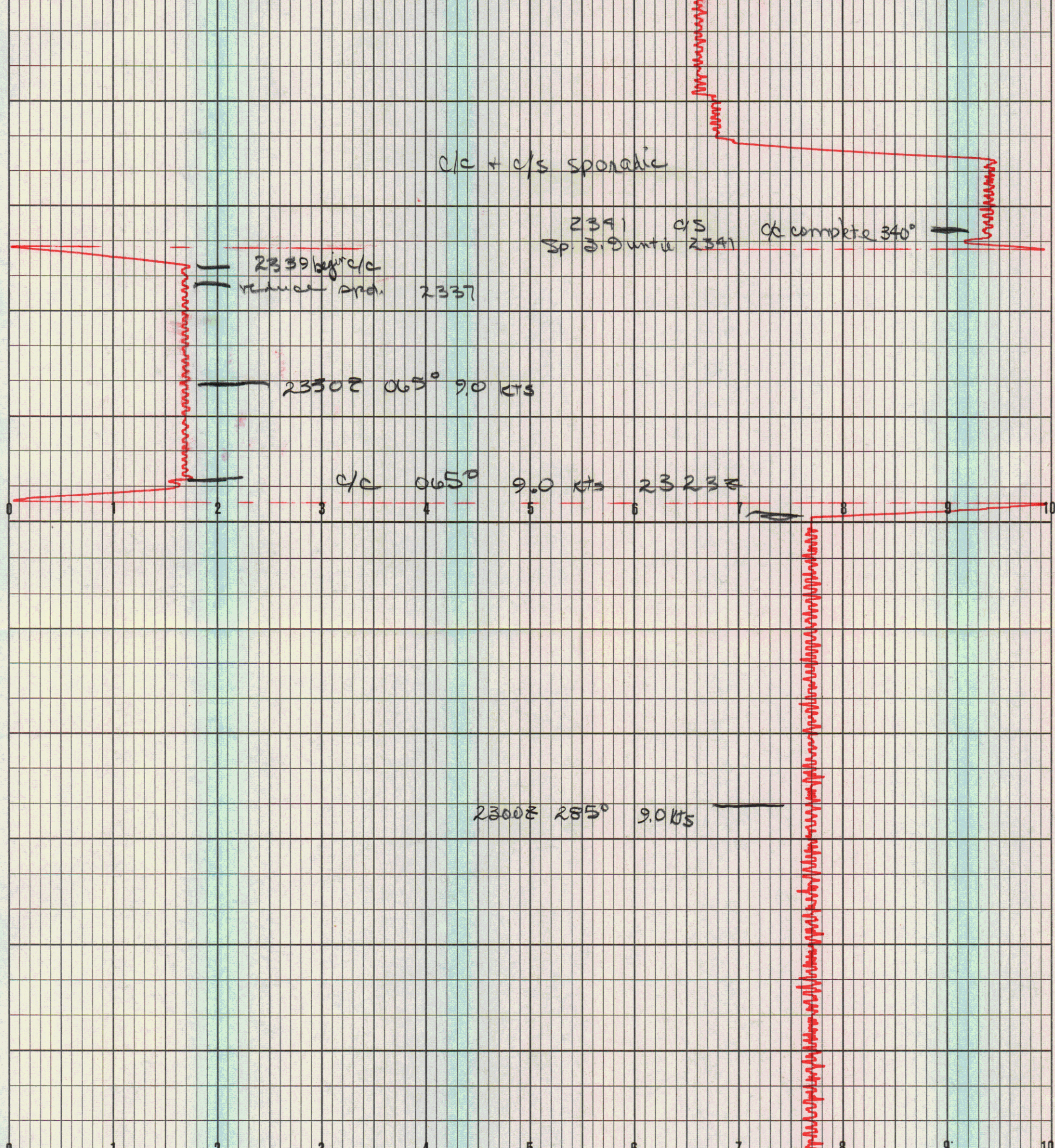


0107 c/c 270°

0058 c/c 70°

0039 z c/c 342°

0017 z c/c 352°



2230 285° 9.0 Kts
28/7/75

2224 C/C 285° 9.0 Kts

2145 C/C 310
4.0 Kts

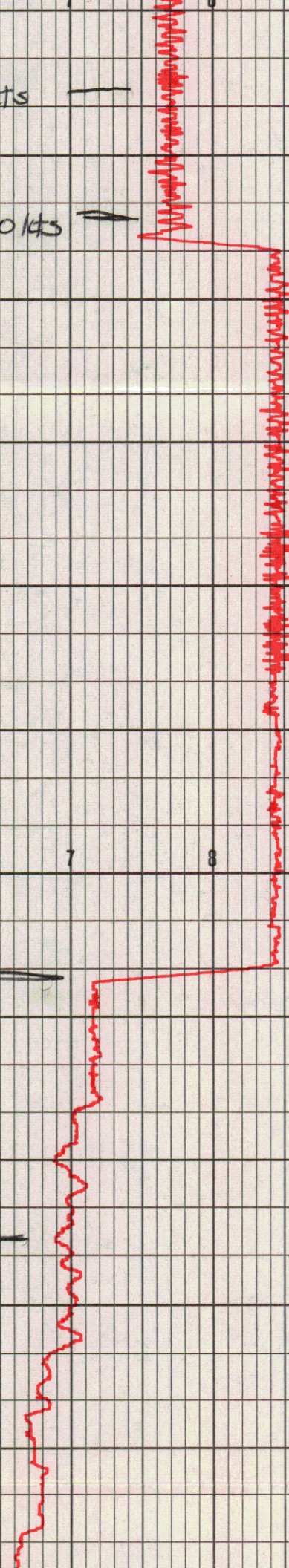
2130 255° 1.0 Kts

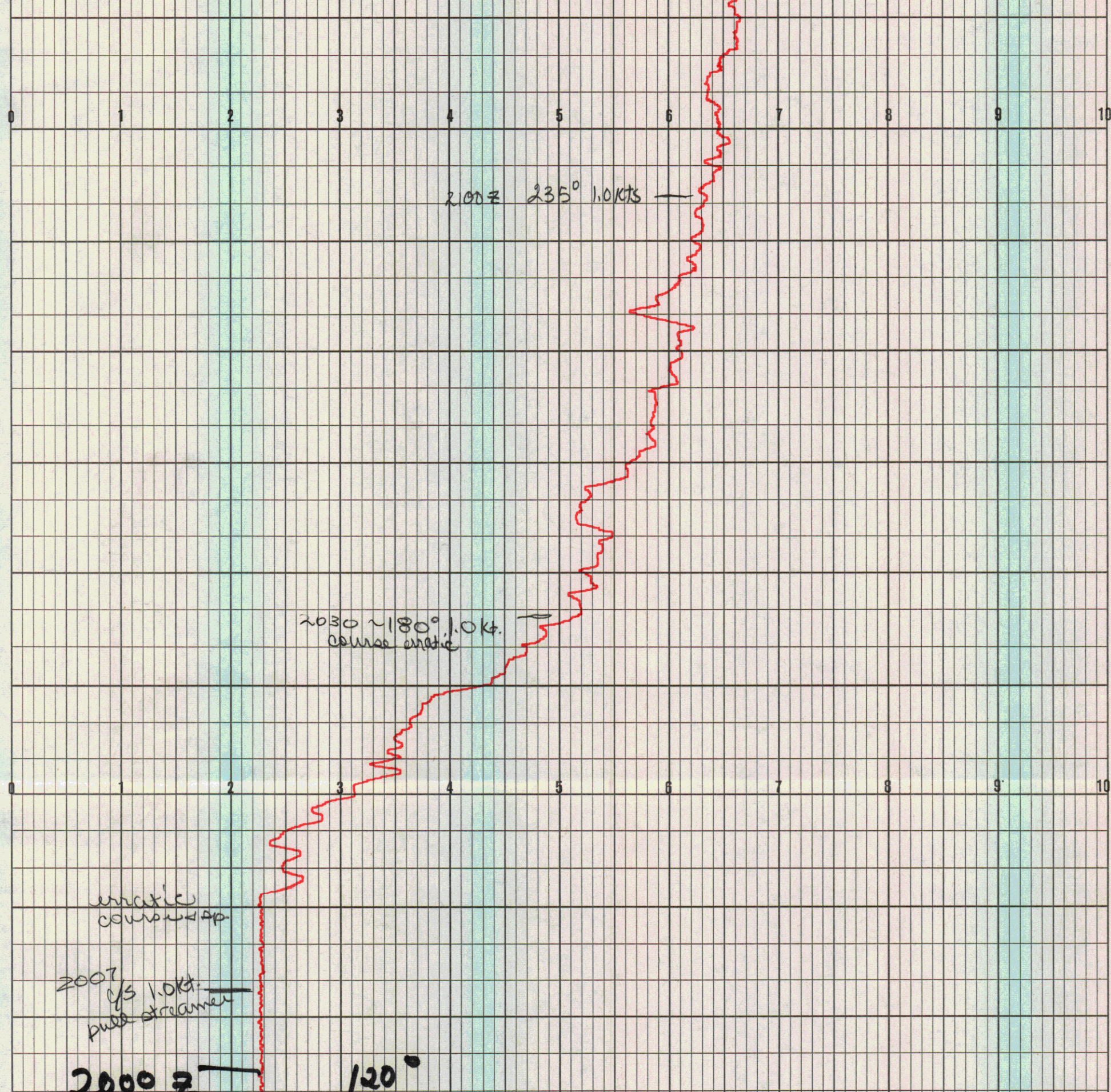
—

—

—

—





1957

c/s increase 100 RPM

1941 c/c 120°
1938 c/c 150°

1934 c/c 180°

1930 205° 5 kts —

1900 205 5 kts —

1830 205 5 kts —

1818 c/c 205 —

1800 215° 5 kts —

1730 215° 5 kts —

1700 225 5 kts

← c/c 215
1705

1630 225 5 kts —

1608 c/c 225°

— 1600 Z 230° 4.7 kts.

— 1544 Z 230°

1530 Z 245° 4.7 kts.

—

1500 Z 245° 4.7 kts.

—

1430 Z 245° 4.8 kts.

—

1450 Z 4.8 kts. 245° —

1330 Z 245° 4.7 kts. —

1300 Z 245° 4.7 kts. —

0600Z 260° 5.2 kts —

28/7/75

0530Z 260° 5.2 kts —

212

0500 \approx 235° 5.2 kts -

0504 \approx c/c 260°

0430 \approx 235° 5 kts -

- 0402 c/s 5 kts

- 0400 \approx 235° 7.1 kts,

0353
c/c 255° -

- 0344 \approx c/c 190°

~~0341~~ C/S 7.0 kts

0328 Z
210°

— 0330 Z 210° 4.6 kts

— 0314 Z
260°

0312 Z —

0300 Z 2350 5.0 kts. —

0230 Z 235°
5 kts —

02002 235°
5 kts

1

01302 235°
5.75 kts

1

c/s - 50 RPM
4.8 kts

01002 235°
5.5 kts

1

0

1

2

3

4

5

6

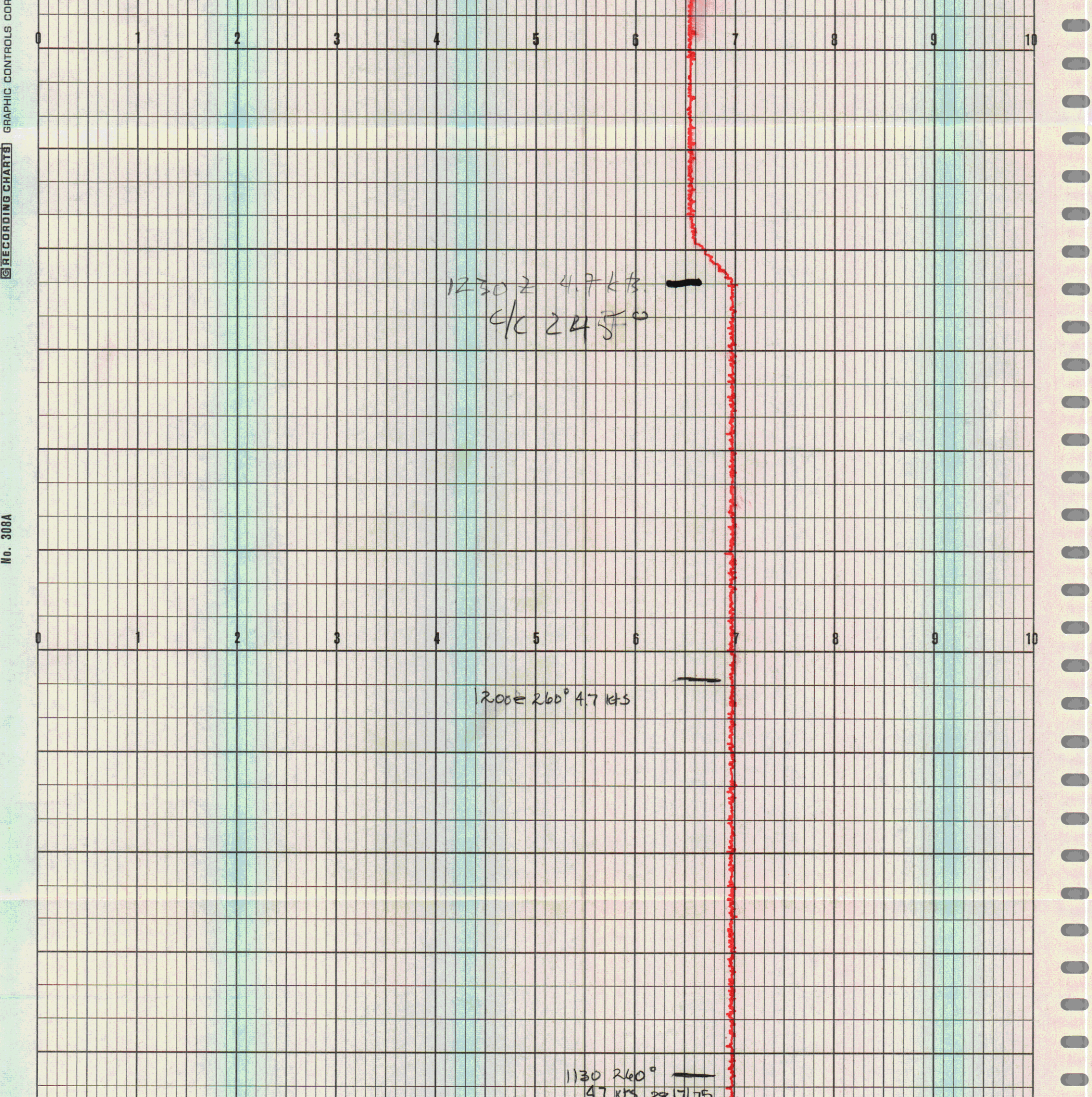
7

8

9

10

Handwritten red text, possibly a signature or date, running vertically along the right edge of the page.



1100Z 260°
4.7 KTS

1030Z
260°
4.8 KTS

1.945 28/7/78

1000 Z
260°

1

0 1 2 3 4 5 6 7 8 9 10

0930 Z
260°

1

0 1 2 3 4 5 6 7 8 9 10

0900 Z
260°

1

0830Z 260°

—

0800Z 260° 5.2kts

—

0730Z 260° 5.2kts

—

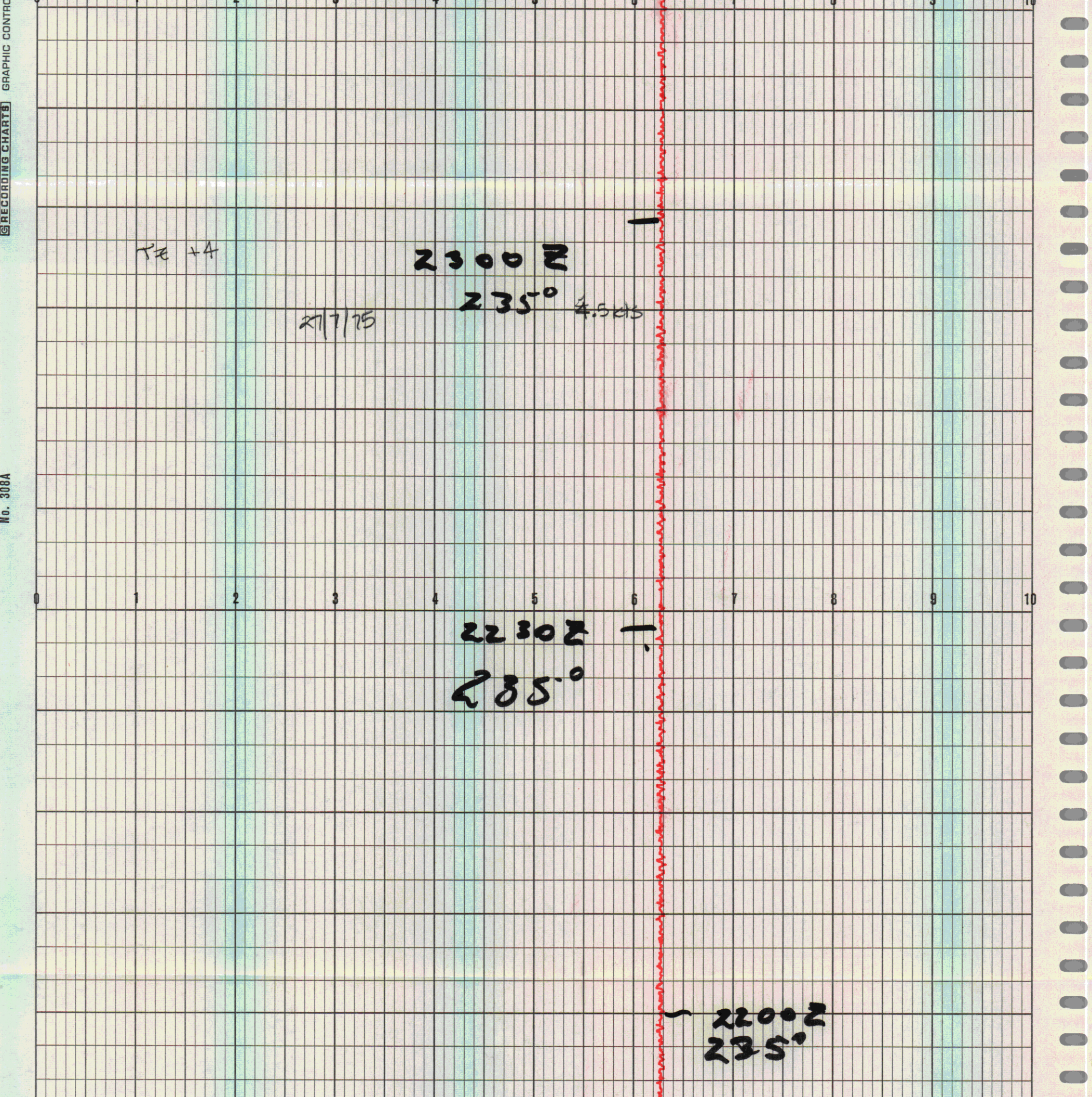
0700Z 260° 5.2kts —

0630Z 260 5.2kts —

00302
235°
5.75 kts

0000
~~2350~~ 2
235°
28/7/75

23302
235°



0 1 2 3 4 5 6 7 8 9 10

2130 Z
235

4.4 kb

#

0 1 2 3 4 5 6 7 8 9 10

2100
235

2050

235°

2000 z 4.7k 235° -

1951 4c 235°

19302 250° 4 kts

1900R 250° 4.5 Kts —

1830Z 250° 3.9 Kts

1800Z 250° 4.1 Kts —

1730 Z 250° 4.5 kts

—

1700 Z 250 4.1 kts

—

1643 4c 250

—

1630 Z

3.2 kts

225°

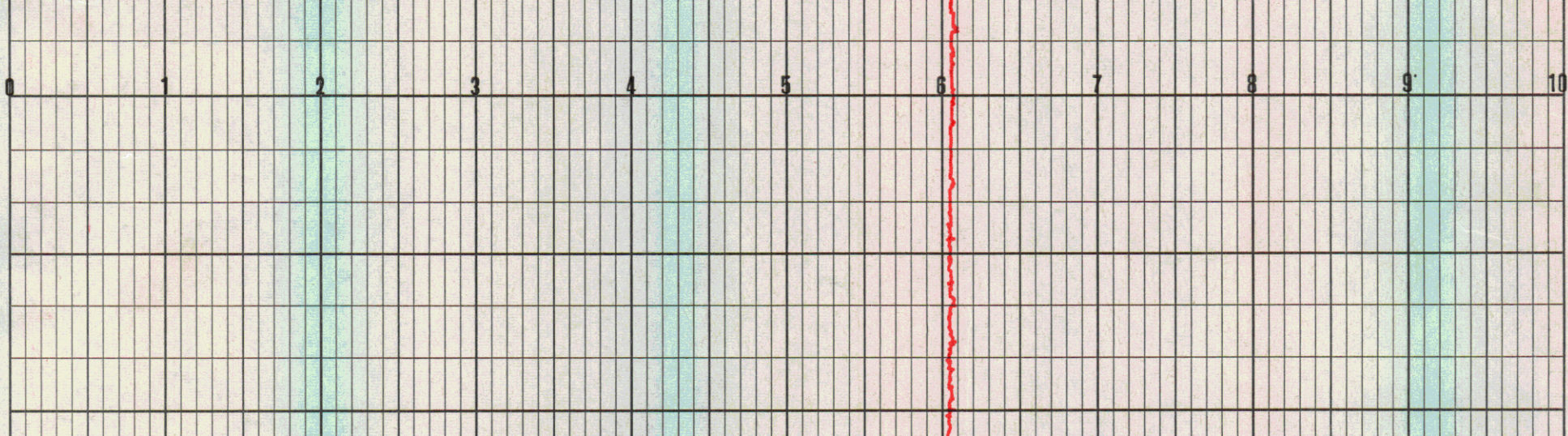
1

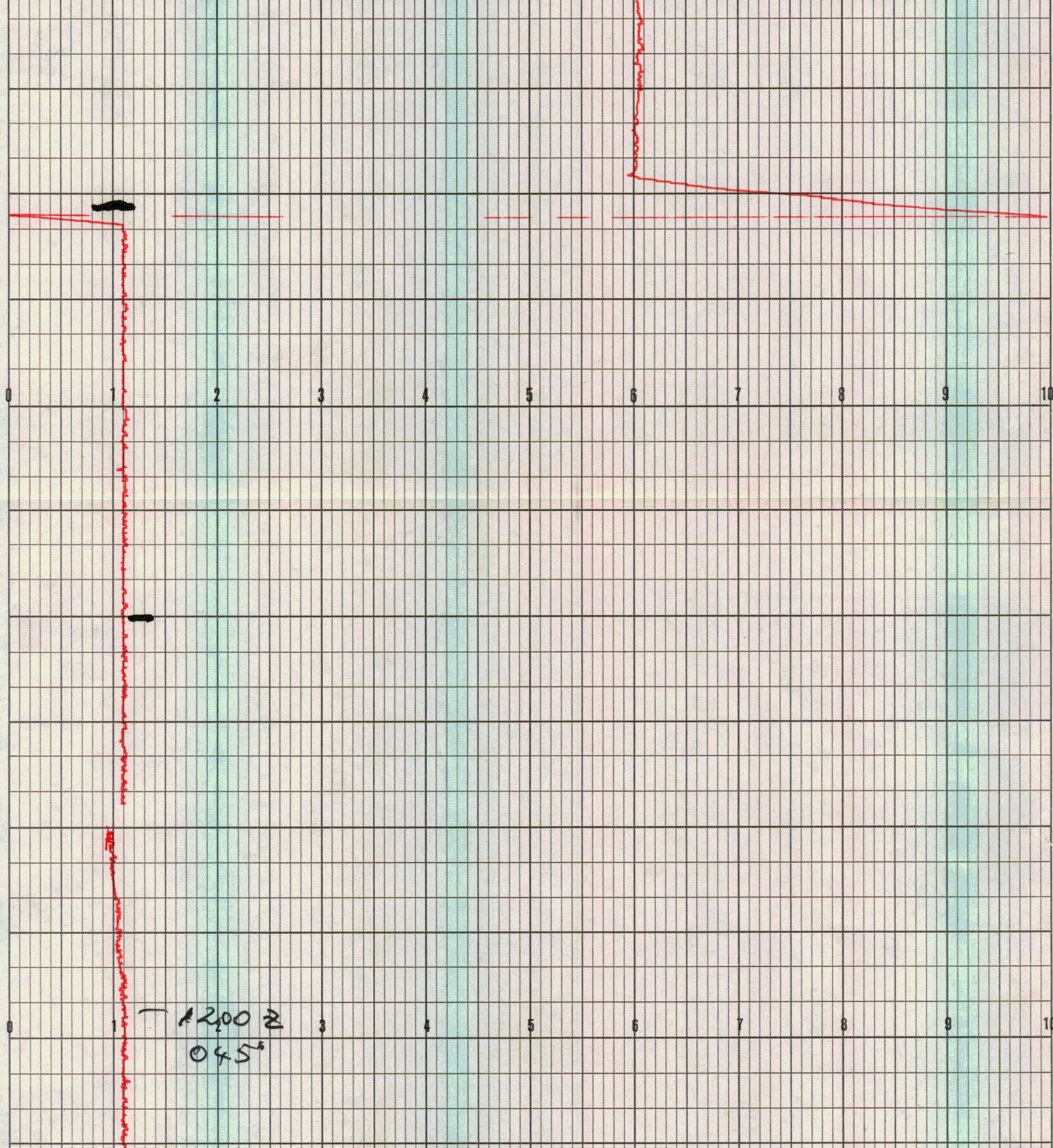
0 1 2 3 4 5 6 7 8 9 10

- 1619 z

1526 z 225°

Paper slip





1130 E 095 7.2kts

1100 045° 7.2kts

1052 c/c 045

1030 095

— 1000 000° 4.1 Ks

27/7/75

0240 Z

000°

before slipping

— 0930 000° 7.2 Ks

0 1 2 3 4 5 6 7 8 9 10

0900 Z
0000

0 1 2 3 4 5 6 7 8 9 10

1830 Z 0000

0800 Z 8 Kts
0000

0747 S/L 0000

0730Z 315° 7.8 Kts

0700 Z 315° 7-7 kts

0630 Z 315° 7-8 kts

0600 Z 315° 7.8 kts

0530 Z 315° 7.8 kts

0500 Z 315° 7.9 kts

0430 Z 315° 7.8 kts —

0400 Z 315° 7.8 kts —

0330 Z 315° 7.8 kts. —

0 1 2 3 4 5 6 7 8 9 10

0300Z 315°
7.8 kts.0232Z 315°
0230Z 7.9 kts.0214Z
C/C 280

0208 C/C 315°

0200 7.9 kts
dodging

0 1 2 3 4 5 6 7 8 9 10

fishing
boats.

0146 Z

0130 Z 315° 7.8 kts. —

0100 Z 315° 7.8 kts. —

0030Z 315° 7.9 kts

0000 27/7/75
315° 7.9 kts

BEGIN 2331E
315° 7.9 kts 24/7/75

[illegible]