

201
CRS 315
SP 7.9 kts

W E N E R E F E R E N C E

2230Z 315°

W E N E W W E N E W W E N E W

2200 Z
315°

—

2130 315° 7.6 kts

—

2100 315° 7.4 kts

—

RENEW

2030Z 315°
7.5 kts

RENEW

2000Z 315 7.6 kts

RENEW

1930Z 315° 7.5 kts

1900Z 315° 7.6 kts —

1830Z 315° 7.3 kts —

1800Z 315° 7.7 kts —

RENEW

RENEW

1730 Z 315 7.6 kts —

1700 Z 315° 7.5 kts —

1630 Z 315° 7.7 Kts —

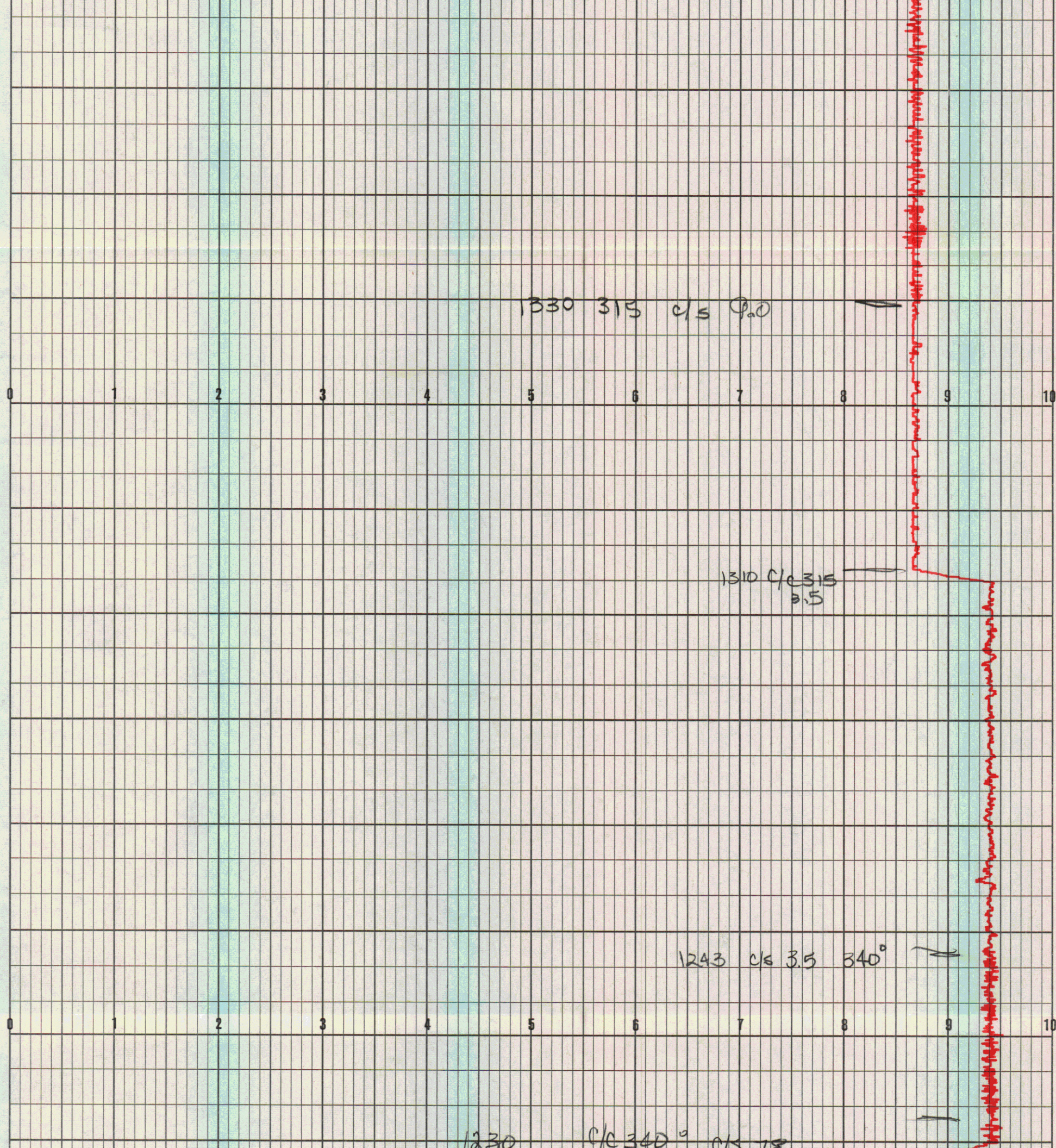
1600 315°
7.7 Kts

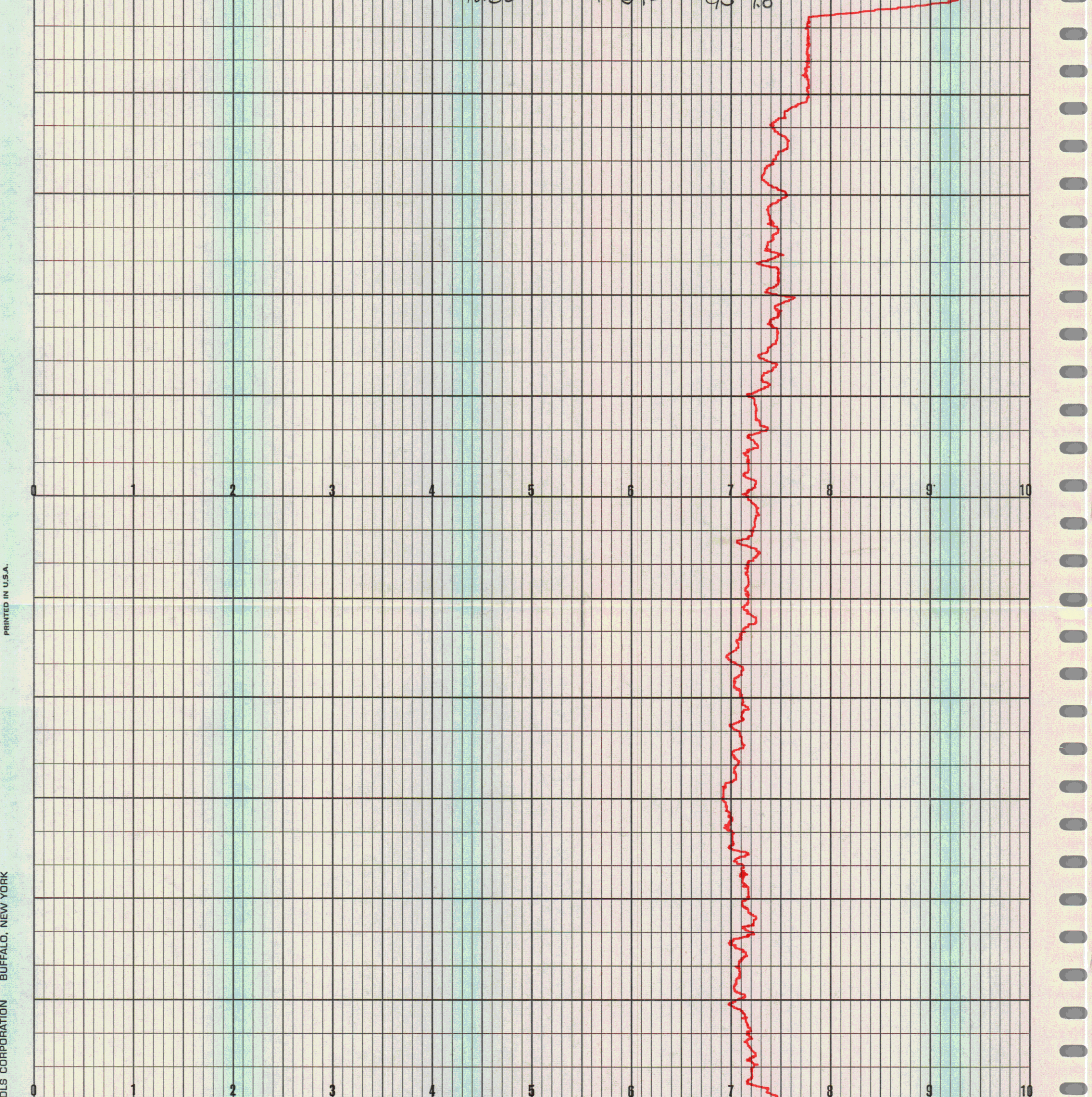
1530 315° 7.6 Kts —

1500 315° ~~7.6~~ kts ~
7.6

1430 315 9.0

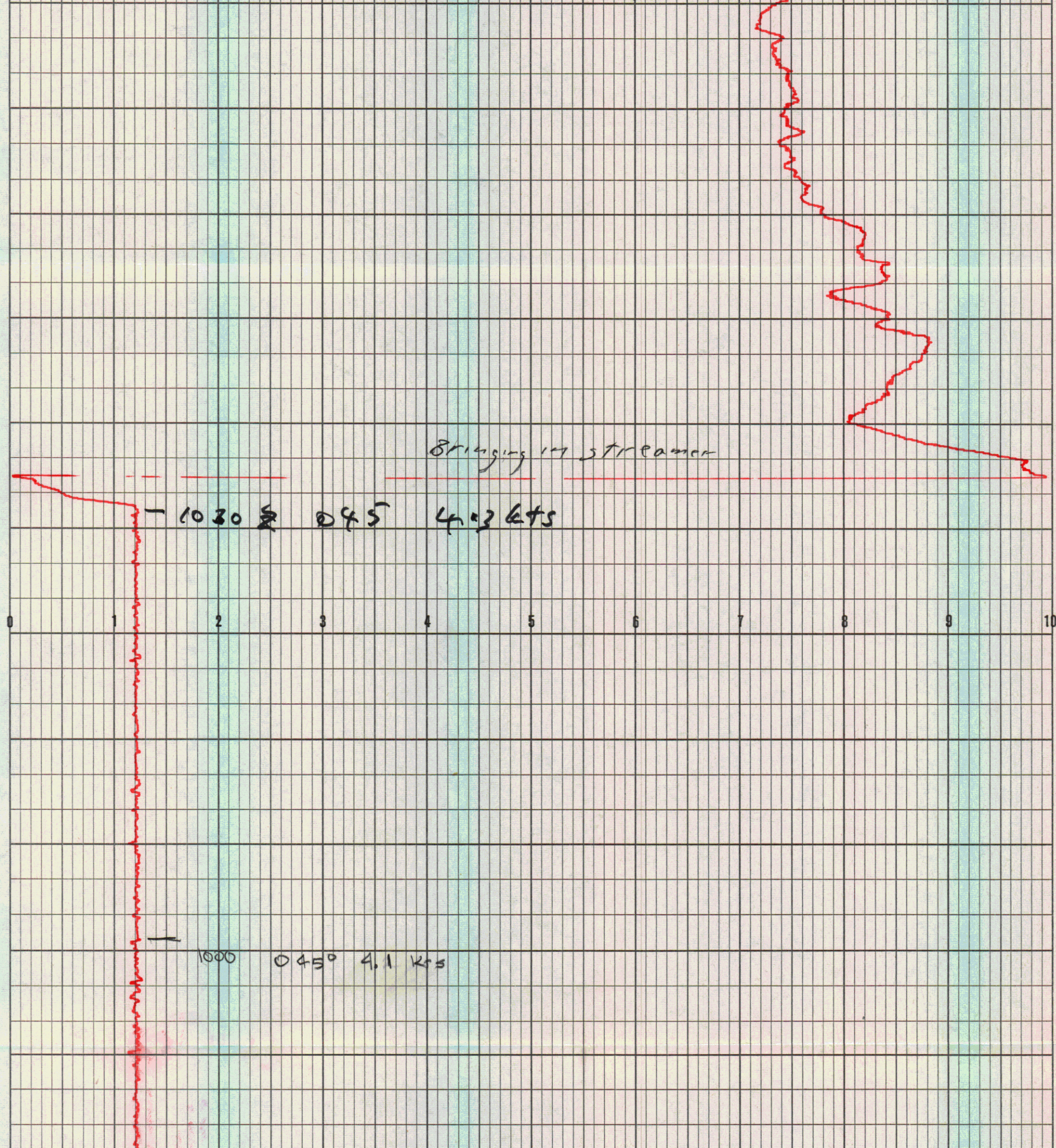
1400 315° 9.0

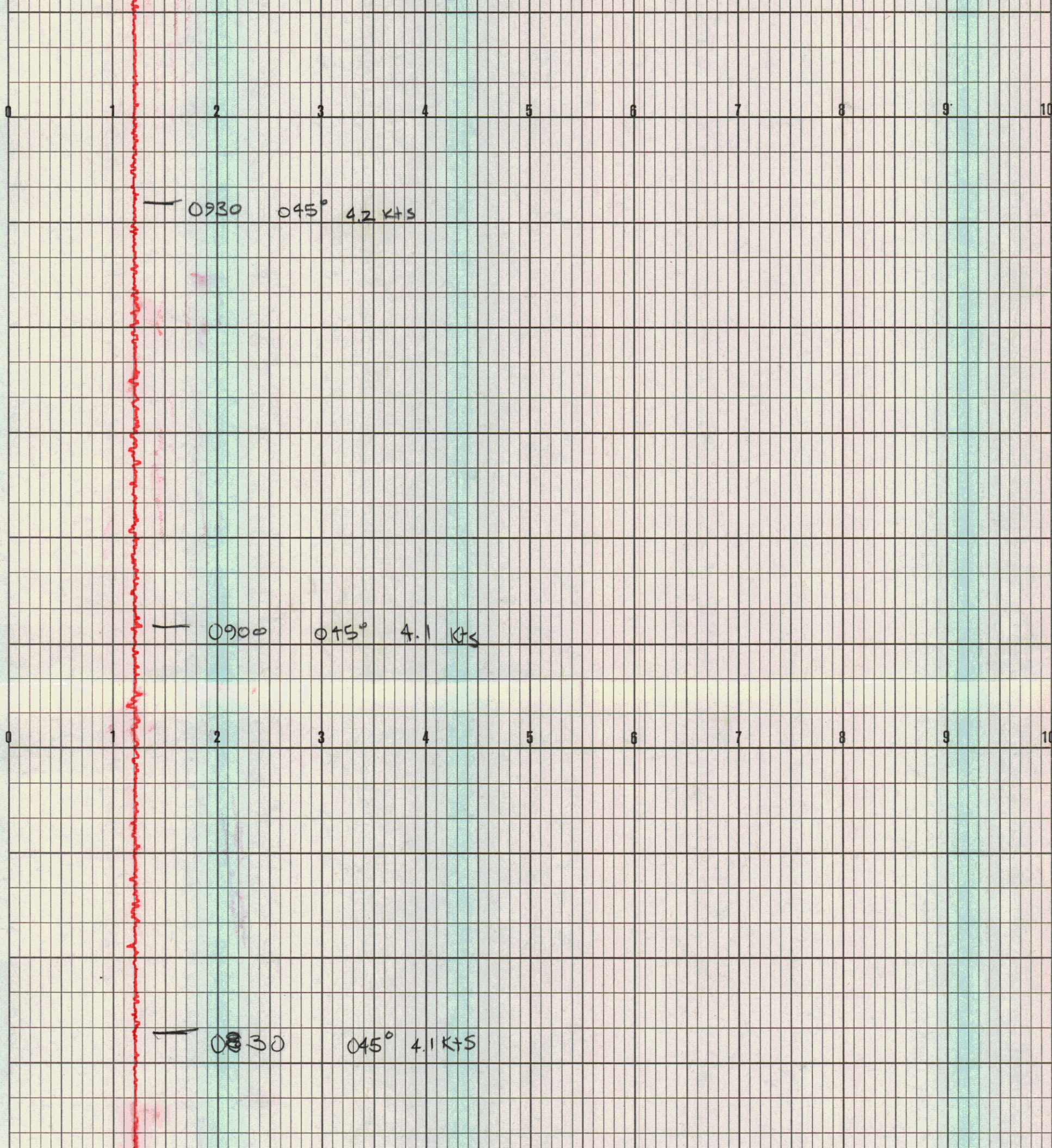




PRINTED IN U.S.A.

OLS CORPORATION BUFFALO, NEW YORK





- 0800 z 045' 4.5 kts

0730 z 045' 4.3 kts

0700Z 045 4.4 kts

0630Z 045° 4.2 kts

0600Z 045° 4.2 kts

— 05302 045° 4.2 kt

— 05002 4.3 kt 045°

— 04302 4.4 kt 045°

→ 0400 Z 4.4 kts, 045°

→ 0330 Z 045° 4.3 kts,

→ 0300 Z 045° 4.4 kts,

— 0230 Z 045° 4.5 kts.

— 0200 Z 045° 4.4 kts.

0150Z 045° 4.4 kts.

0100Z 045° 4.3 kts.

0030Z 045° 4.4 kts.

— 2400Z 045° 4.4 kts

— 2330Z 045° 4.1 kts

— 2302Z 045° 4.1 kts

- 2230 Z 4.3 kts 045°

- 2200 Z 4.5 kts 045°

- 2130 045° 4.5 kts

— 2100 045° 4.5

CAL

— 2030 Z 045° 4.5 kts

25/7/75

2000 Z

4.4 KB 045°

— 1930 Z

4.6 KB 045°

25/7/75

— 1900 Z

4.1 KB 045°

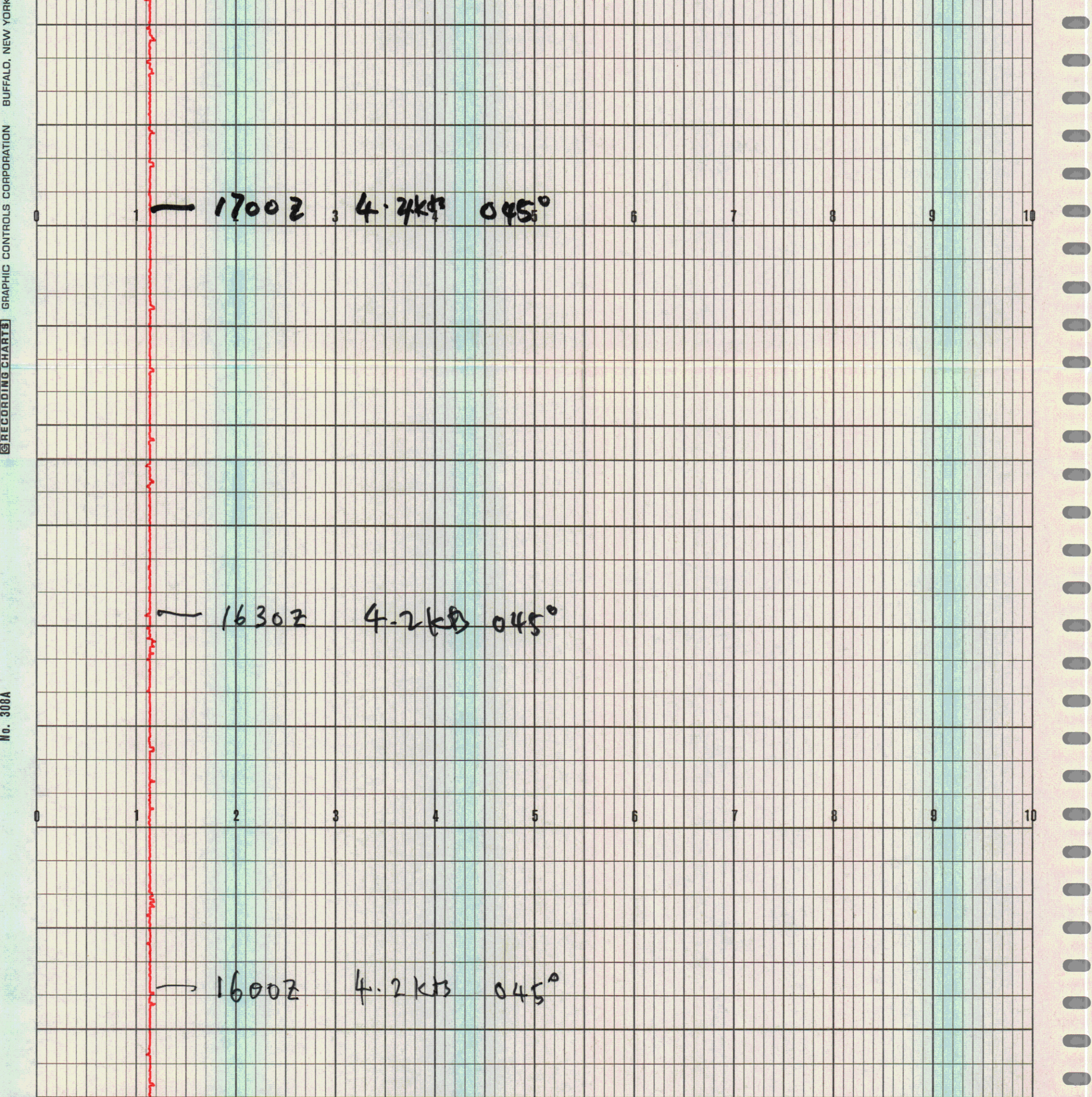
0 1 2 3 4 5 6 7 8 9 10

— 1830Z 4.3 kt 045°

— 1800Z 4.5 kt 045°

0 1 2 3 4 5 6 7 8 9 10

— 1730Z 4.4 kt 045°



1 - 153₂₀ Z 4.4 kts. @ 45°

- 1500 Z 4.3 kts. @ 45°

— 1430 Z 4.3 kts, 045°

→ 1400 Z 4.6 kts, 045°

→ ~~1330~~ 1330 Z 4.6 kts, 045°

1300
← ~~1200~~ Z 4.6 kts 045°

1230 Z 045° 4.1 kts.

1200 Z 045° 4.0 kts.

— 1130 Z 045° 4.0 kts

— 1100 Z 045° 3.9 kts

— 1030 Z 045 4 kts

1000 045 4 kts

0741 045 700 RPM 3.8 kts

0930 045 3.1 kts

1 0830 045° 3.0 kts

1 0830 045° 3.3 kts

1 0800 045° 3.2 kts

- 0730 045° 4.0 Kts

- 0700 Z 045 4.0 Kts

- 0630 Z 28/7 / 75

045 3.5 Kts

— 0600 25/7/75

— 0530 Z 25/7/75
045° 3.5 Kb

— 0500 Z 25/7/75
045 3.4 Kb

— 0430 Z
045 3.5 kts

— 0400 Z 25/7/75
045 3-5 kts

— 0330 Z 25/7/75
045° 3.4 kts

— 0300 Z 25/7/75
045° 3.4 kts

— 0230 Z 25/7/75
045° 3.2 kts

— 0200Z 25/7/75
045 2.6 kts.

— 0130 25/7/75
045 3.4 kts

— 0100 25/7/75
045 2.5 kts

0030 25/7/75
045 2.8 kts

0000 25/7/75
045° 3.1 kts

2330
045° 3.1 kts
24 25/7/75

0 1 2 3 4 5 6 7 8 9 10

2300 045

0 1 2 3 4 5 6 7 8 9 10

2230 2 045



045 2200 Z

045 2130 Z

045 2109

020 2400 Z

0 1 2 3 4 5 6 7 8 9 10

000

0 1 2 3 4 5 6 7 8 9 10

24 July 75

about

2003

330°

0 1 2 3 4 5 6 7 8 9 10

0 1 2 3 4 5 6 7 8 9 10

