

02 JUNE 75
2300Z

07 JUNE 1975
1530Z

ROLL #2 OF 2

END MAGNETICS FOR IG 15-2

1530Z

IG 15-2 MAGNETICS
07 JUNE 1975

1500Z 4Kts
51946

50°

1452 1/2 50° 4Kts

1430Z 120° 7Kts
51858

1400Z 120° 6Kts
51900

13302

7Kfs

120°

51908

1300

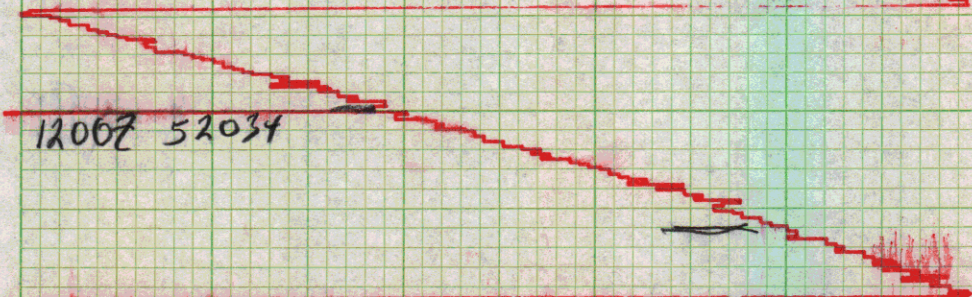
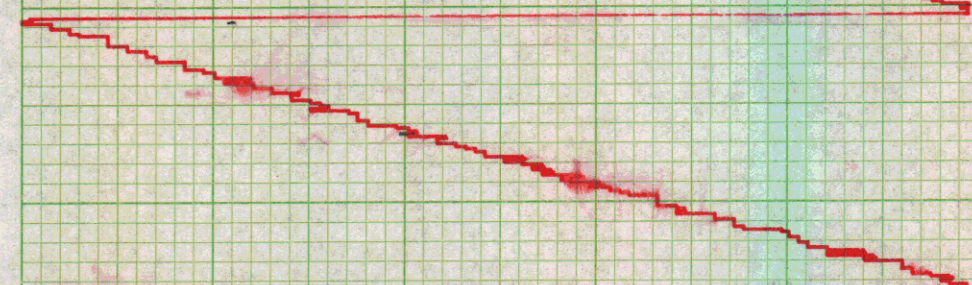
51380

12302

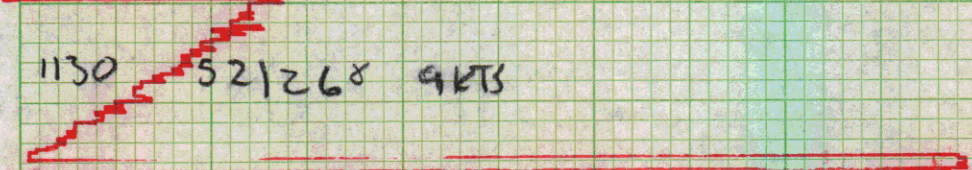
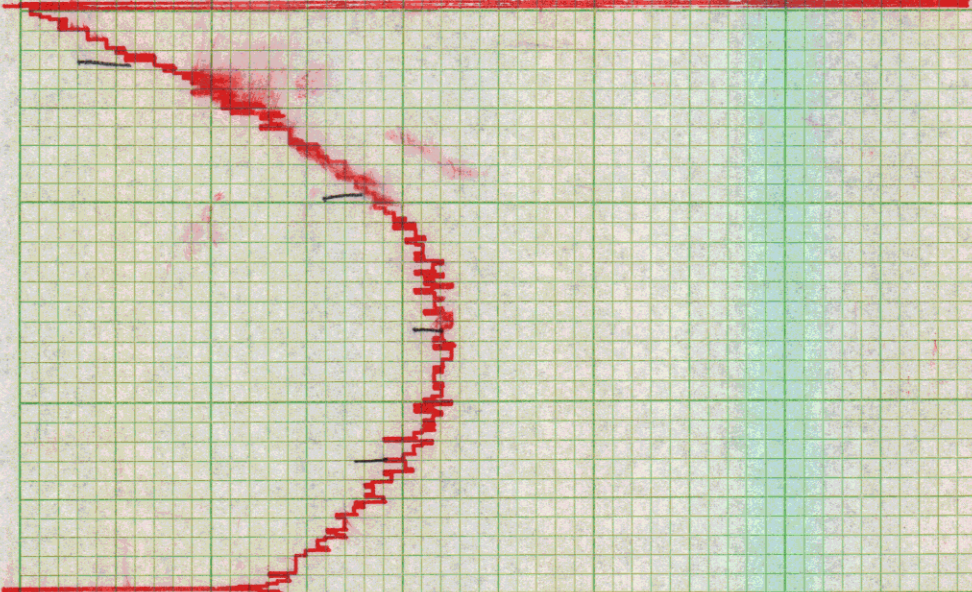
51813

9Kfs

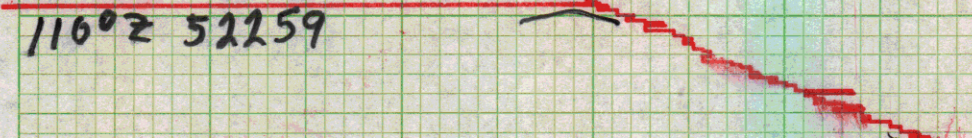
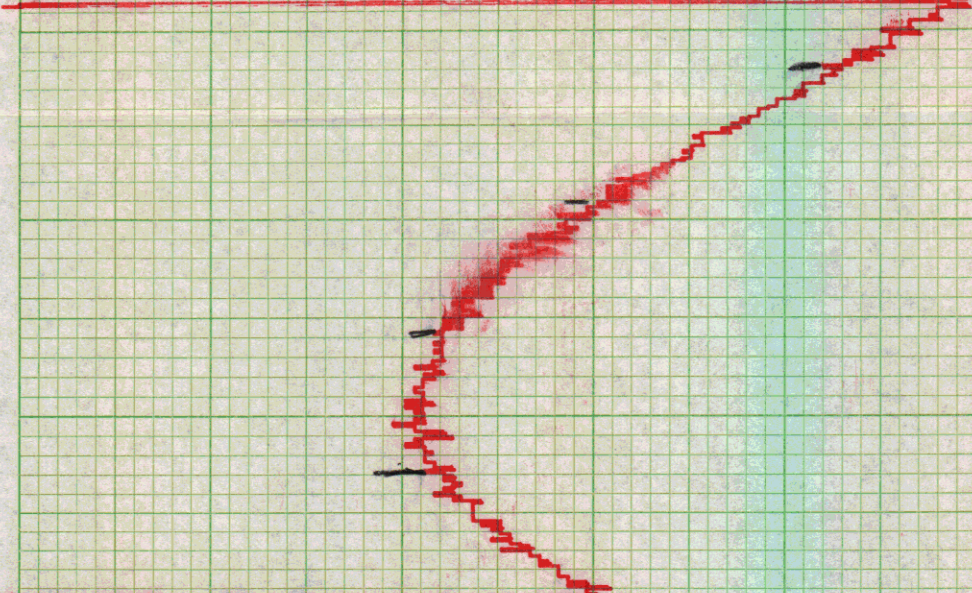
110°



1206Z 52034



1130 521268 9KTS



1160Z 52259

1030Z 52243

1000Z 52211

0942-

0930

0900z 52289

0830z

52244

0800Z - 52115

0730Z

52192

120° - 7.5

7 JUN 0700Z

52346

120° - 7.5

0630Z - 120° 9.5kt 5239C

52367 0600Z 120° 7.5

52383 - 0530Z 120° 7.5

0500z 120° 70KTS
52473

0430z 7KTS 52601
120°

52482

0349 C/S 2K

0330 120° 7.5K 52561

0300 120° 7.5K 52632

52628
ON 02552 07 JUNE 75

IG 15-2

MAGGIO HAULER IN

80457

0030Z 52706

0000Z 52660

c/e 060

2330Z 52674

c. l. r. k

2300Z 526638

0630

2130Z

52618

2200Z 52595

2130z 52617

2100z

52642

063°

2100z

6K

52656

063°

2030z

6K

52660

063°

2000z

6K

cl 063°

52658

060°

1930

6K

cl 060°

52668

057° 1900Z

6K

1830Z

057°

6K

52674

1800Z

52685

057° ~ 6Kts

52690 057° 1730z
6K

1700 057° 6K 52700

1630z 057° 6Ktr
52701

1600Z 6Kts 050°
52678

1530Z 6Kts 050°
52656

1500Z 043°

6Kts.

52641

1430Z 038° 6Kts
52621

1400 035° 6K

52617

133 02

085° SKts

52614

1300Z 52600

cal.

52575 1230Z

1200Z 52554

1130Z 52533

1100Z 52527

1030Z 52519

1000Z 52504

0930 52491

0900Z - 040° - 6 Lt 52488

6K 52483

0830Z 040°

C/C 040° -

52470

0700Z

045° 6K

52450

0730Z

045°

6K

~~4.8~~ 6K

52423

0700Z

045°

6KES

52412

06302

045°

52416

0600E

045°

6K

045°

52438

0530 Z

052° 6k

52446

0500 Z

052° 6kts

0430 Z

052° 6 Kts

52424

-0400 052° 6K 52408

0330 z 057° 6Kfs
52413

52421 0300 z 057°

0230 057°

6K

52442

0200 057°

6K

52464

0130

057°

6.0K

52470

0100Z 52457

0030Z 52444

00002 52445

23302

52434

15 -

23008

52427

2240 C/K 0570

2230 52409

2200

52405
ds

018°
6 Kt

2130Z 52405

52383

2100Z

014°

4.5k

52363

2030Z

018°

4.5k

52347

2000Z

018°

4.5K

110 016°

018° 4.5
52334

1930

4.5K

52322

1900Z

018°

4.5K

52308

1830Z

018°

018°

52286

1800Z

4 KTS

52268

1730Z

018°

4 KTS

1700 Z 018° 4 Kts

52250

1630 Z 018° 4 Kts 52239

1600 Z 4 Kts 018°

52220

1530 z

52199

018°

4 Kts

1500

018°

4.5k

52177

52177

1430 \approx 018° 4.5 Kts
52162

1400 \approx 018°
4.5 Kts

52145

1330 018° 4.5 Kts 52129

1300

020° 4.5K

52117

12302 52104

12002 52088

1130Z 52078

1100Z 52076

1030Z 52065

1000Z 52047

0930Z

52030

0900Z 52020
028° 4.5K
025

52008
4.5K

0830Z 028°

C/C 4.5K

51990

0800Z

C/C 028° 028°

C/c 298

51982

0730 Z

598

51982

0700 Z

2250-6.5H

0636Z 51980

C/O 22.5°

51975

0600Z

6K

51978

0530Z

6K

52001

0430Z 235° 6kts
52016

0400 235° 6k 52007
52007

0330Z 6.5Kts 235°
52005

0350Z 6.5Kts 235°
52002

0230 235° 6K 51987

02002 6K 235°
51978

0130 6K 235° 51987

01062 010235°

0000 520000

0030 5 JUNE

520020

0008 C/S TO 900 ppm

0000

520060

2450

2340

C/L 2450

2230

52016

110°

4 JUNE 75

52030

2300

22307

52055

22008 52072

2130 52094

52120

21008

712°

4.51K

52151

2030 Z

113°

4,51K

52177

2000 Z

111°

4K

52200

1930Z

109° 6N

52215

1900Z

109°
4.5

52233

1830Z - 109° - 4.5

C/C 109°

1800

52239 -

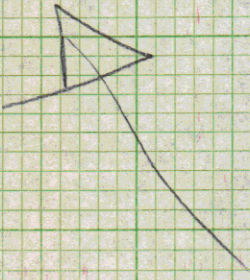
107° - 4.5

52243
17302

C/C 107°
S - 4.5

1700 105°

4.5 52251



1630 1050 4.5K

52268

16002 4.5Kts 105°
52270

15302 4.5Kts 105°

52277

1800 \pm 4.5KHz 10s
52282

1430 100° 4.5K 52293
52293

1400 095° 4.5 K

52307

1330Z

095° 4.5Kts

52328

1300Z 52344

12302 52351

12002 52371

11302

1100Z 52434

1030Z 52457

1000Z 52479

0930Z 52491

C/C 123°
52510 123° - 4.5

52558

125°

0830Z

6K

CLG 45K

CIC 125° @ 0815Z

CLC

52568

30° ~~255°~~

6K

0800Z

CLC

295°

52532

6K

0730Z

295°

52495

0700Z

6K

295°

52471

0630Z

6K

52464

0600Z

310° 6K

clc 310°

0530Z

320° - 6 kts

52447

clc 320°

0500Z

~~clc~~

335°

6 kts

52416

0440

clc

335°

0430z 280° 6Kts

52397

0400z 6Kts 275°

52376

0330 275° 6K

52349

0300

275° 6K

52323

0230

275° 6K

52322

04 JUNE 75
IG 15-2
MAGGIE

0200 z

6K

285°

52321

0130Z 4.5Kt 285°

52298

0000Z 52277

c/c 285°
0050Z

0030Z 52262

MAGNETICS
04 JUNE 75

IG 15-2

e/e 290°

0000Z 52246

2330Z

52232

23005

22302 52155

22002 52136

2130Z

52114

2106Z

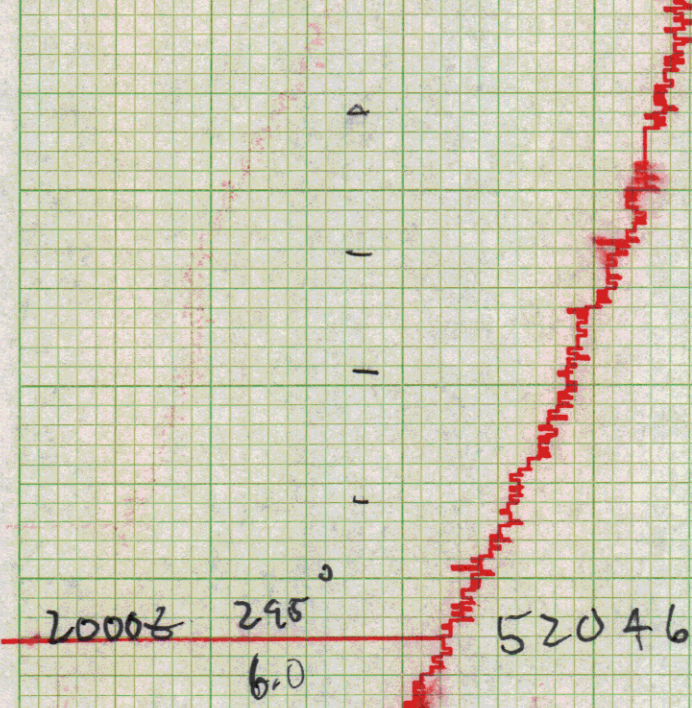
52102

295, 6141

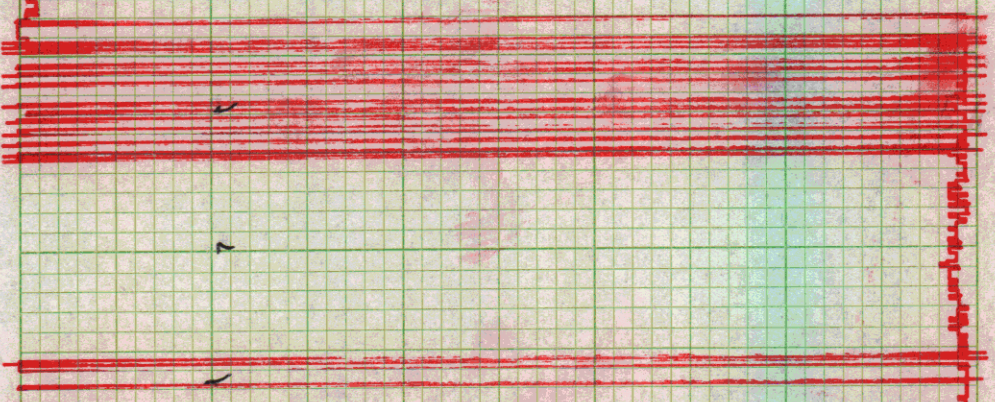
52076

2030Z

295° 45X



52010 1930z ~~295°~~ 5K
295°



51999

1900Z

22°

4.5K

51976

1830Z

4.5K

22°

51973

0800Z

4.5K

22°

51952

1730Z

4.5K

22°

51921

1700Z

ck

4.5Kts

1630Z

ck

4.5Kts

51895

1600 022° 5.5K 51886

51886

1540 E End IP-2NW

1530 2 112° 4.5K
51916

1500 112° 4.5K 51930

14302 1120 4.5K

51939

~~14302~~ 1120 4.5K

51964

1330Z 4K 112°
51979

1300Z 51989 112° 4 KTS

1230Z 52016

03 JUNE 75
IG15-2

1200Z 52045

c/c 112°

1130Z 52060

52067 1100Z

1030Z 52087

1000Z 52094

69307 52K12

52136

0900Z

114°

4.5K

52148

0830Z

4.5K

114°

52160

0800Z

4.5K 114°

52191

115°

0730Z

4.5K

52190

115°

0700Z

115°

4.5K

52205 0630z 118° 4.5

cl 118°

0600z

52233

121° 4.5

cl 121°

0530z 123° 4.5

52260

0500 125° 4.5K

52282

04302 1270 4Ktr
52301

0400Z 4Kts 127°

52322

0330Z 4Kts ~~120°~~ 127°

52342

0300Z 120° 4.5Kts

52370

0230Z 4.5Kts 120°
52401

0200Z 4.5Kts 110°
52418

0130Z 4.5Kts 105°
52726

0160Z 52441

0053 c/c 1050

0039 c/s 4.5 453

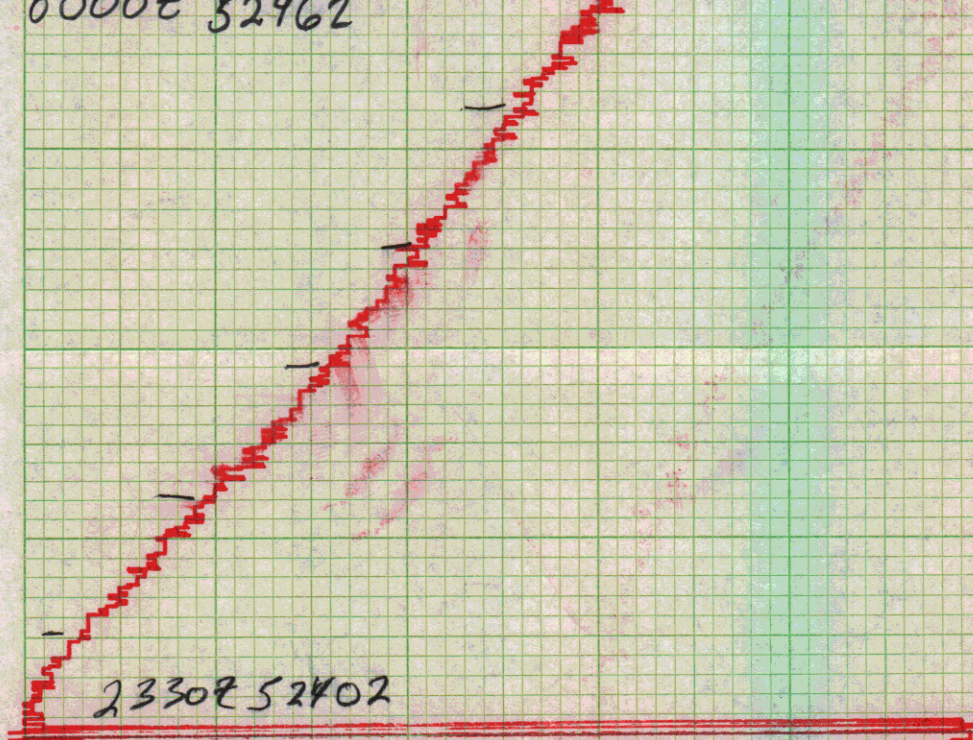
0034 c/c 1180

090° 0030 52468 3Jue

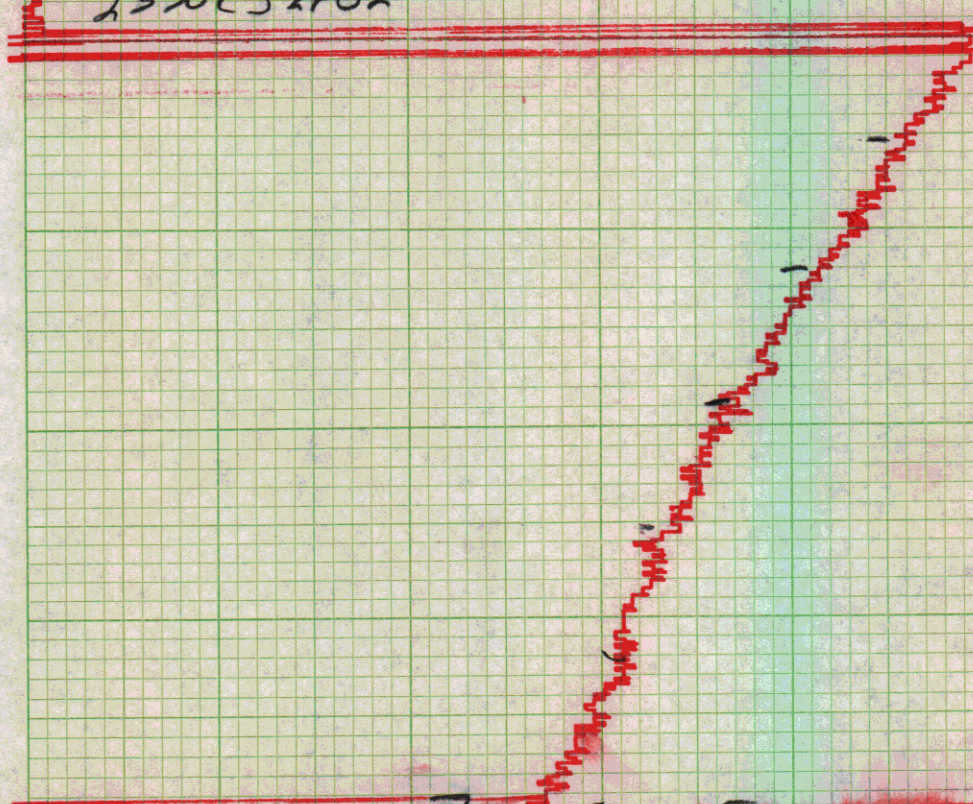
IG15-2

03 JUNE 1975

0000Z 5246Z



2330Z 5240Z



2300Z 52350

2 JUNE 75

1G-15-2 6KTS

MAGNETICS

000°

02 JUNE 1975

2300Z

07 JUNE 1975

1530Z

ROLL

1000 8 15 5

3300 5

1230 5

05 2000 12

05 2000 12

10 12 50 WAVELENGTH