

Roll #10F2

02 JUNE 75  
2259 Z

27 MAY 75  
2043 Z

Record #1  
27 MAY 75

Chattanooga FTA - Bermuda

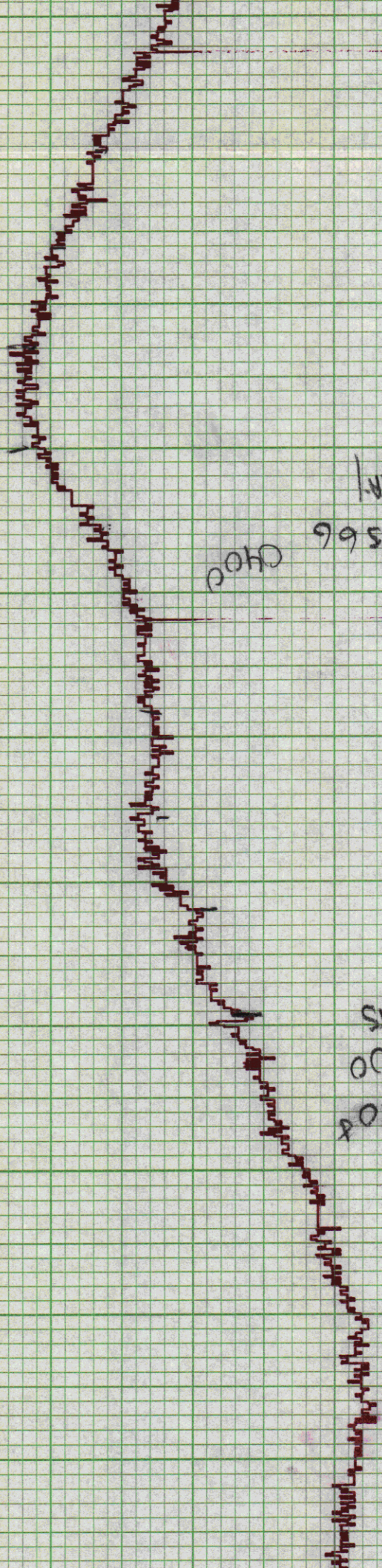
IDA Green 15 126 Z

090°-10kts  
2043 Z  
2043 Z

2100 Z 50521

2130  
27 MAY 090°





27 MAY 12  
0900 50566 0000

27 MAY 12  
0900 505408 0000



50540

2500

50580

11K5 0000

2530

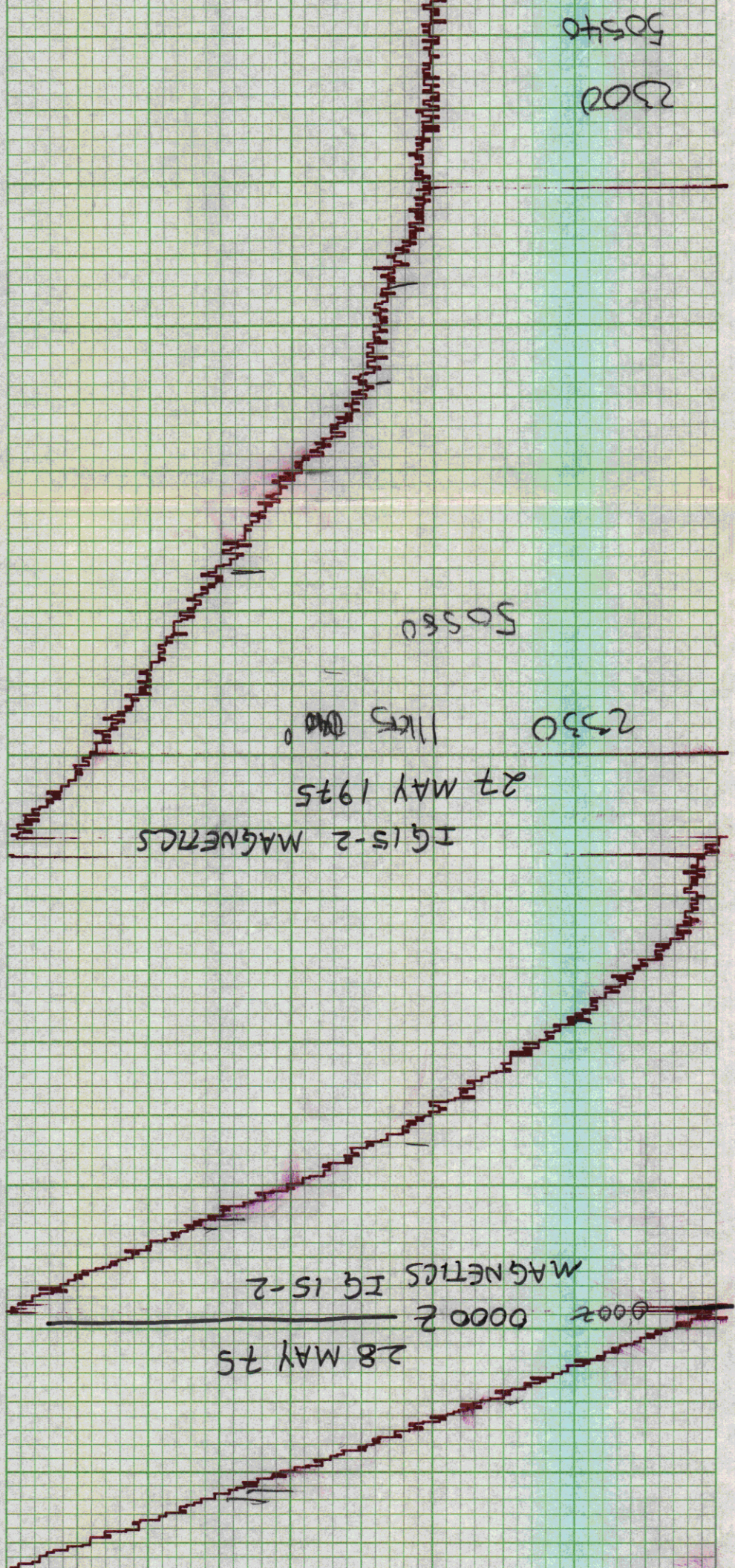
27 MAY 1975

IG 15-2 MAGNETICS

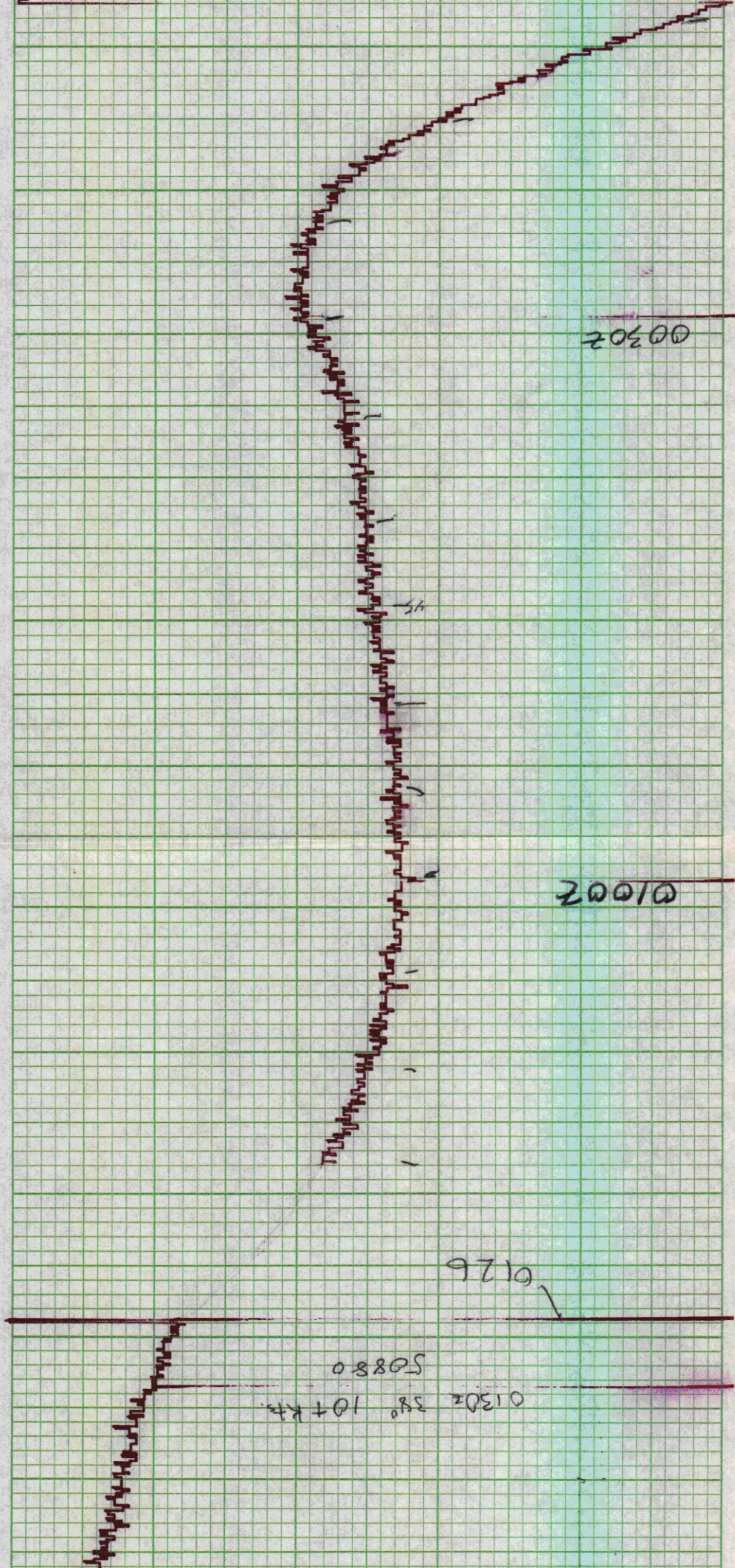
MAGNETICS IG 15-2

00002 00002

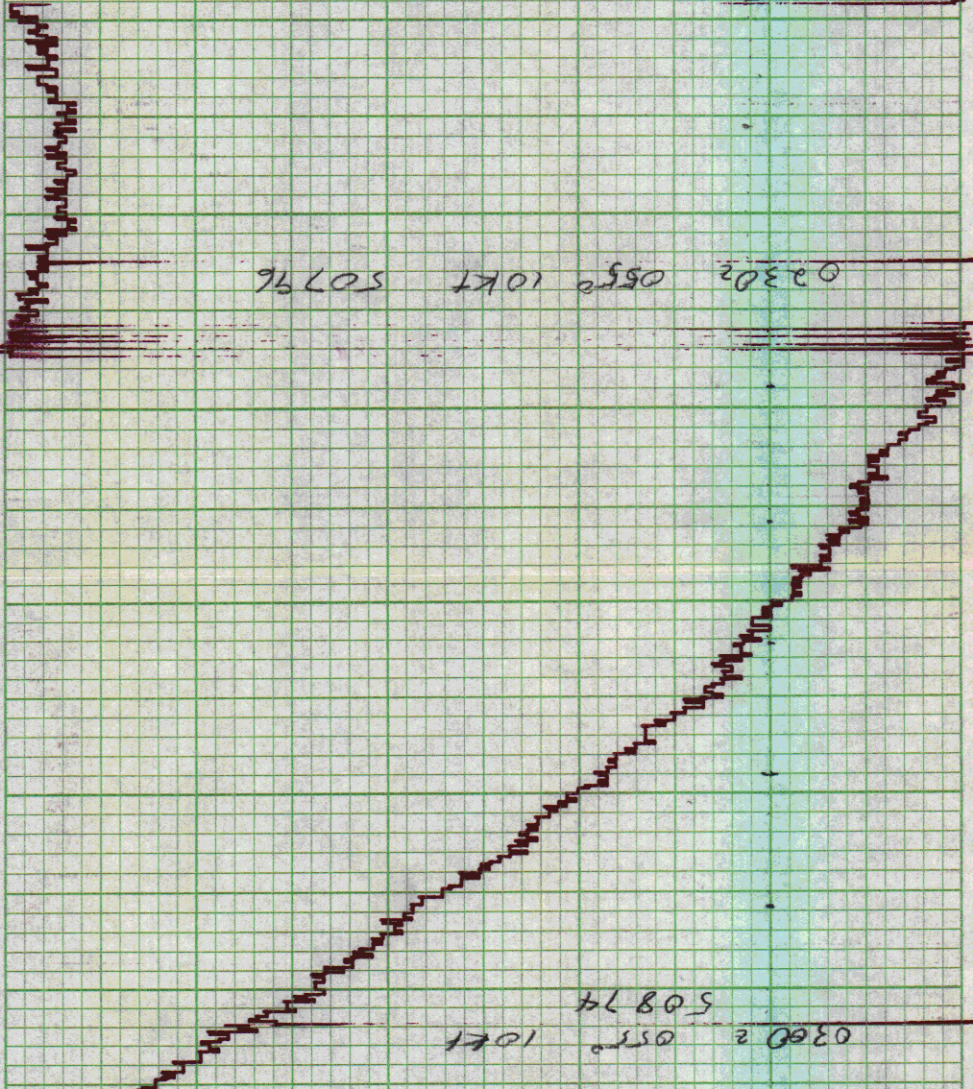
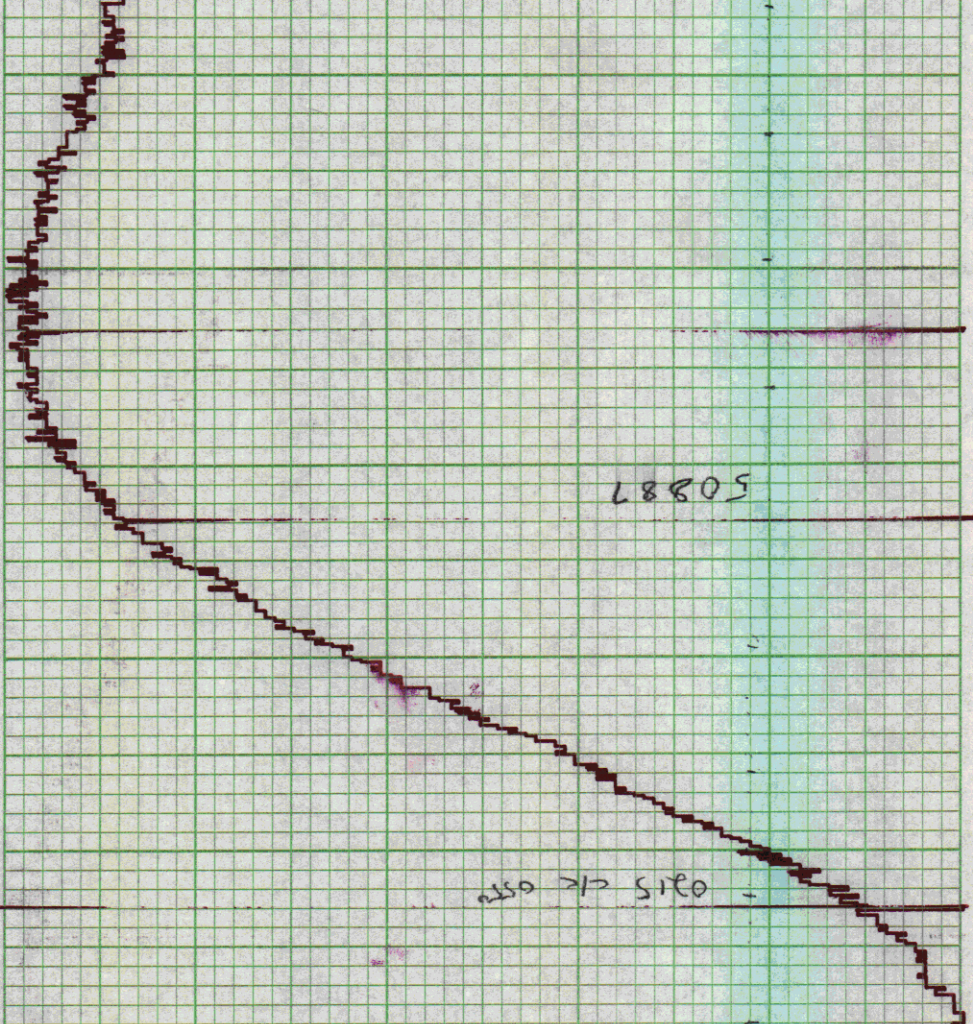
28 MAY 75



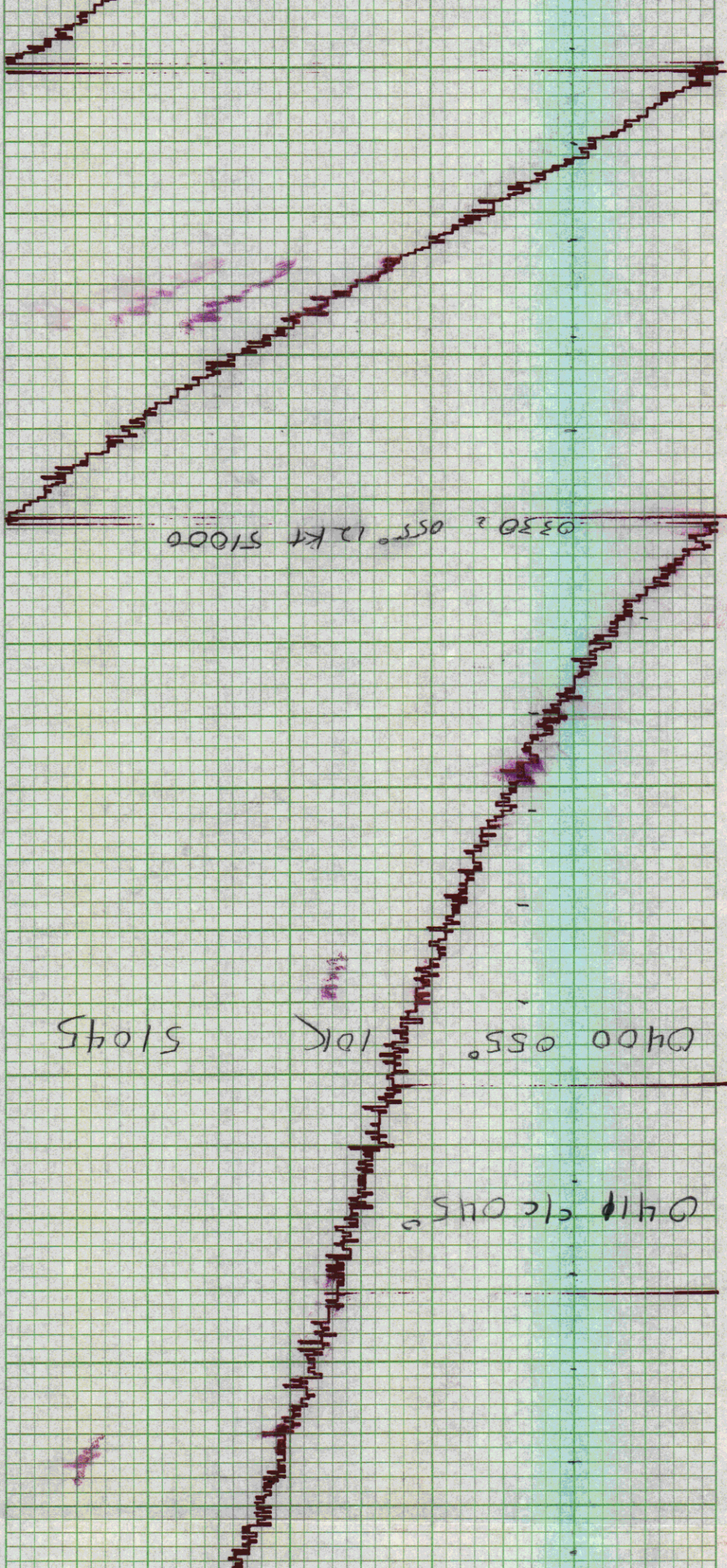




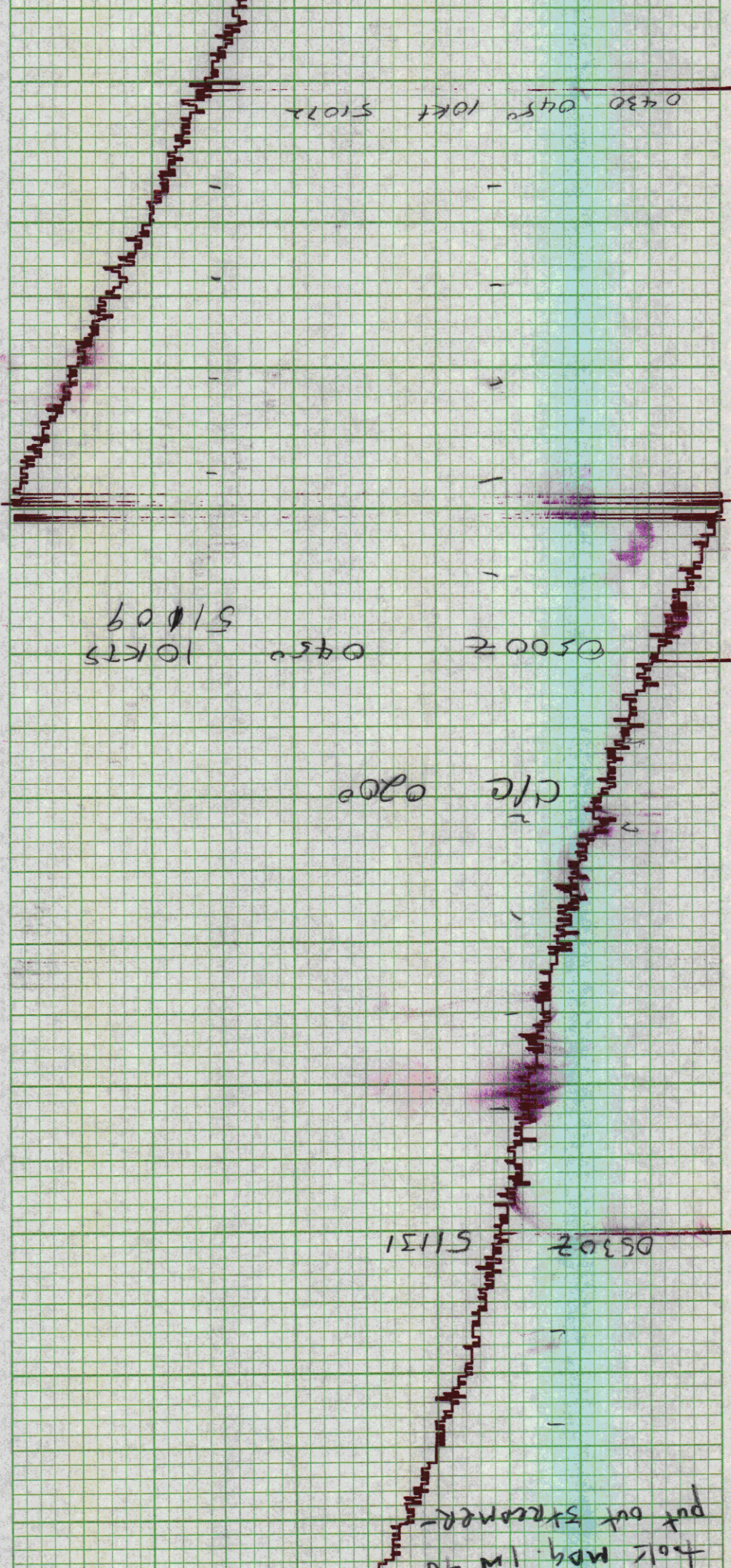






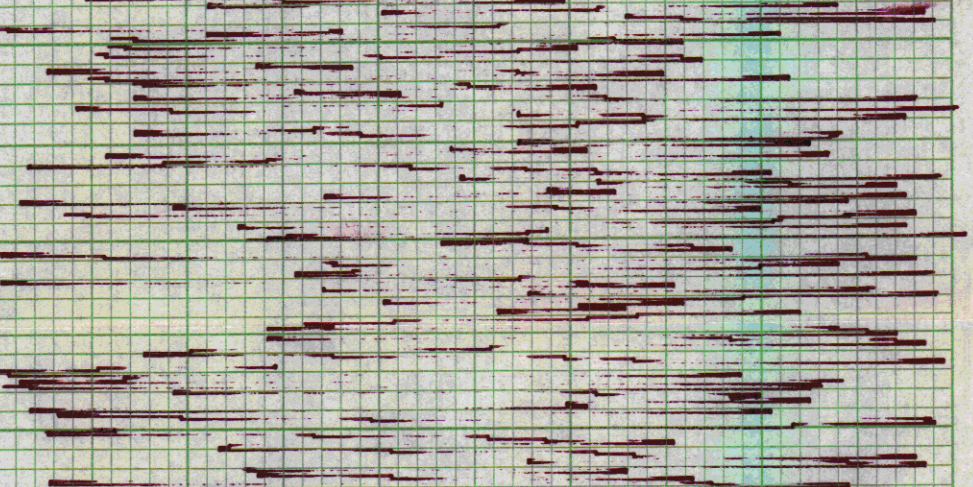








05502 -



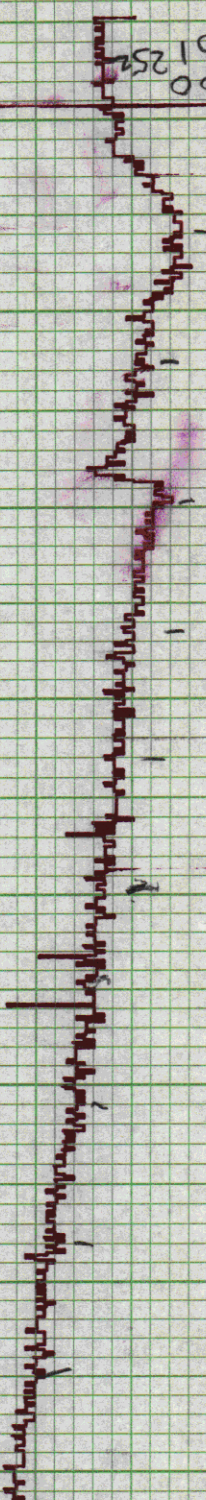
136-6  
Resume - 6

51253 10567

1.100  
51254

1162 c/c 0010

1182  
0700  
51254  
28 MAY



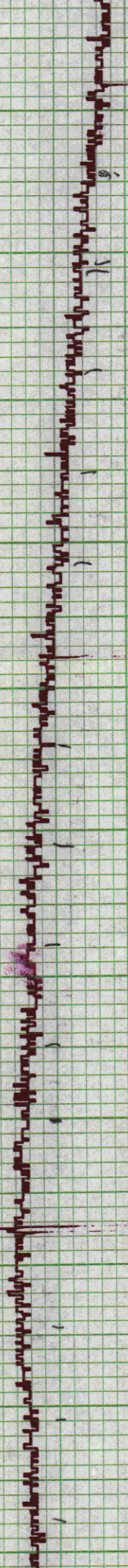


12002 070° 51264

12302 51271

28 MAY 75  
IC 15-02  
Cape Canaveral to  
BDA

13002 070° 4K 51276





1323 067

1330 067° 6K

51275

1400 067° 6K 51280

1422 063°

51292

1430 063 6K



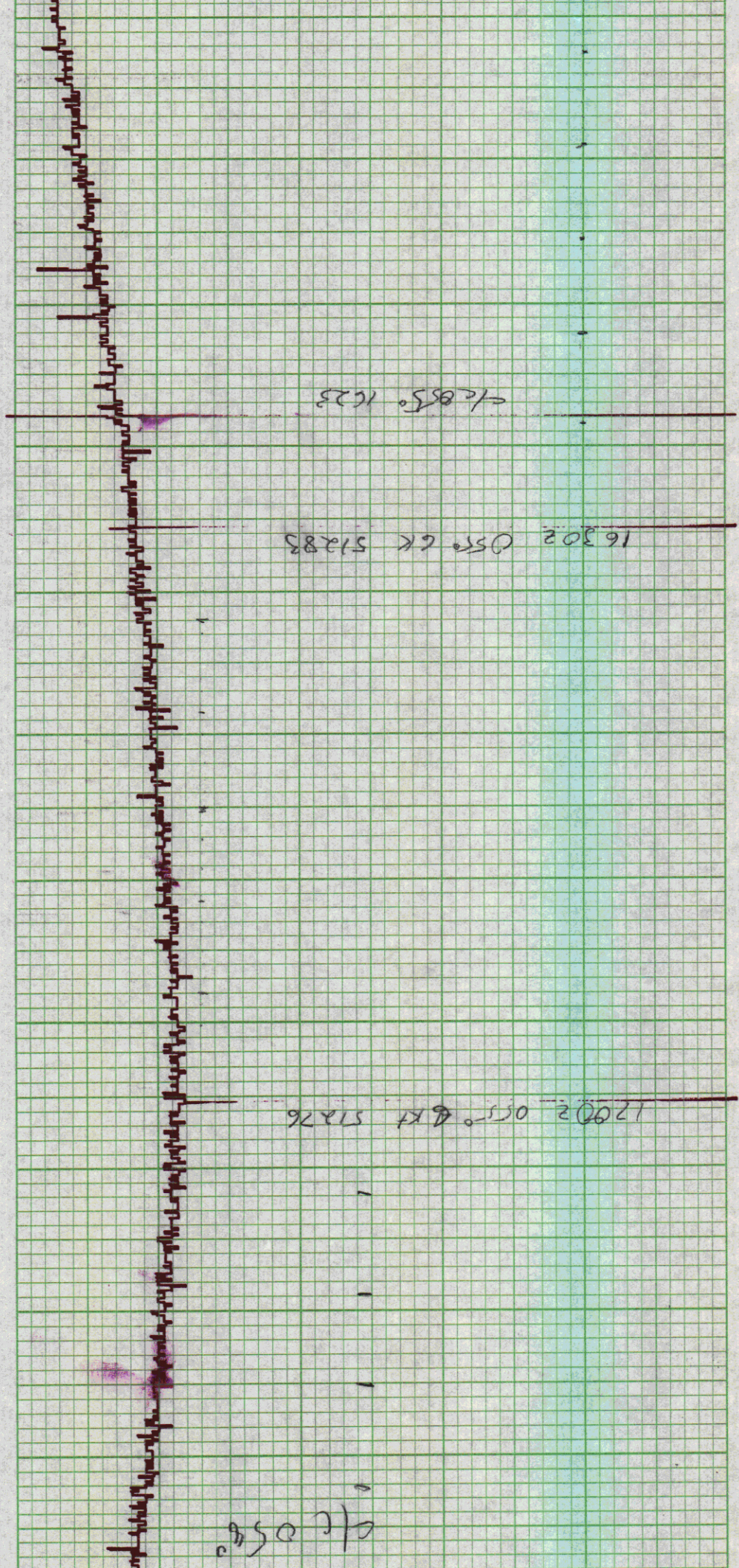
1500 0630 GK 51303

1524 0580 GK

1530 0580 GK 51303

1600 0580 GK 51294







51294 058° 1130Z CRT

12

1

11

1

1805Z - 5130Z

4145

51316 1830Z 058°



51338  
1900Z  
0580  
6KTS  
C/L 0650

51348  
1930Z  
C/L 0680  
6KTS

51346  
2000Z  
0680  
6.5KT



068° 6.5 KTS  
51339  
C/O 0630  
2030Z

2100Z  
51336  
0630 6.5 KTS

2130Z  
51334



2200

2230Z 51332



1300 063  
611 51339

0630  
51346  
2832

00002 51352



0030Z

5783Z

0100Z 6KT 0630

IG152

29 MAY 75

0130 6KT 0630  
51815



0200 062° 6c 51294

0230 063° 6c 51277



0307

0330 063° 6K1  
51268

04002 063° 6K4  
51275



04802 0630 644 51293

0500 0620 64 51299

05307- 51299  
0600 644  
28 May 1978



060°-6

51301

0600Z

060°-6

51302

51309

CLC 065

065°-6

0700Z-

51329



065° 6/15 51338 0730Z

51345 0800Z 065° (KT)

51366



366 F

0830Z

6 KTS

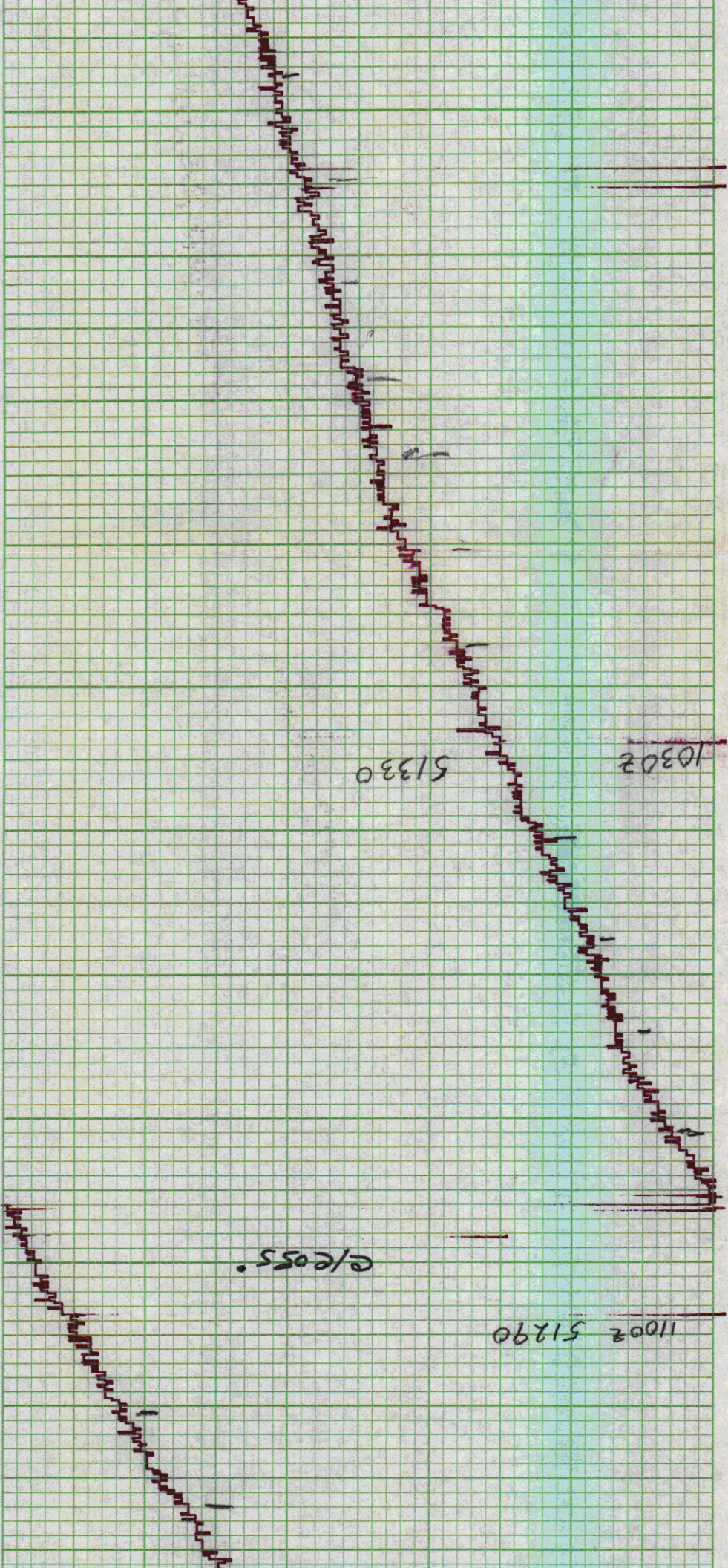
0900Z

6 KTS

54378

0930Z 51374





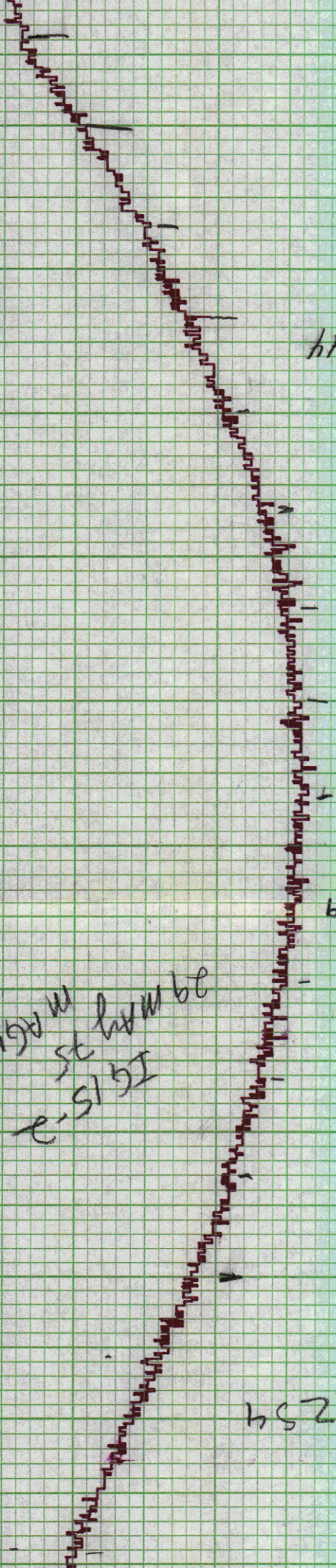


IG 15-2  
29 MAY 75  
IN AGENTS

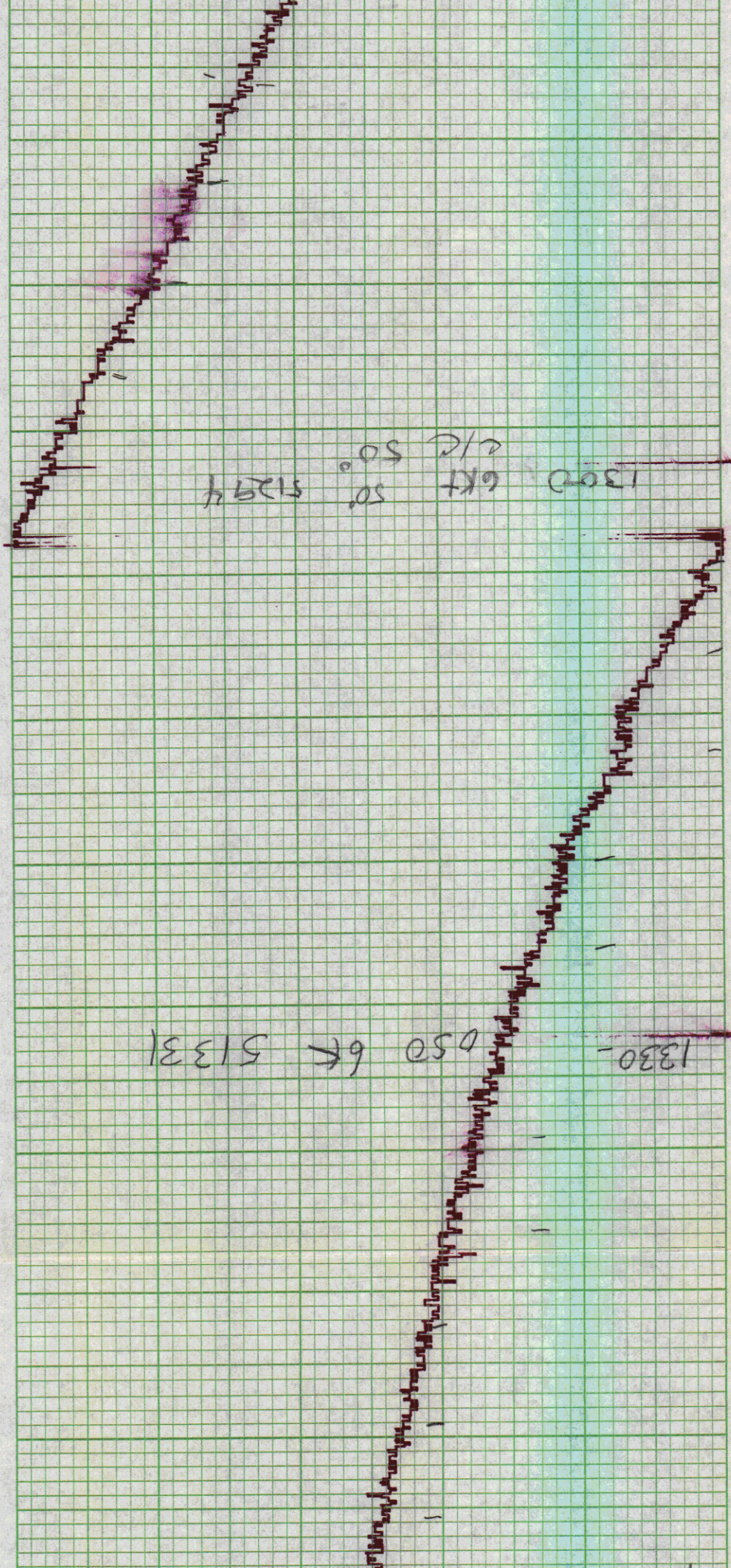
1130Z 51244

1200Z 51229

1230 51254





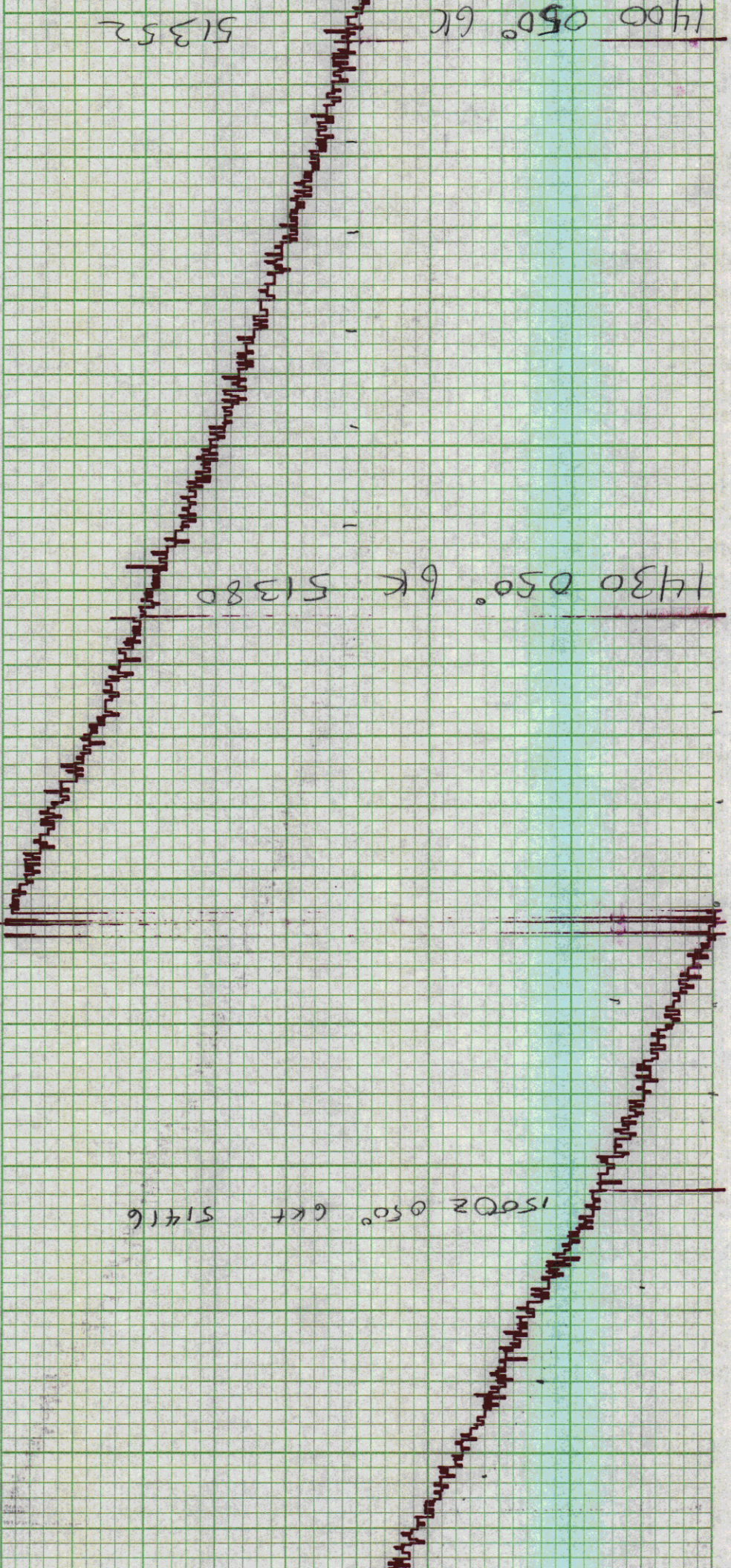




1400 050° GK 51352

1430 050° GK 51380

1500 050° GK 51416





1530 2 050° 6Kt  
512158

1600 2 050° 6Kt 51976

1630 050° 6Kt  
51525



Recorded off for  
10 min. by mistake  
c/c 055

1810 Z 515 15 1800 Z 6K15

1730 050.6 51556

1700 050 51547 6K



1830 51600 - 055-6845  
29 May

51616 1900Z 0550  
6.61KTS

51630 1930Z 0550  
6KTS



2000Z  
055°  
6 KTS

51642

C/C 050°

2030Z

51646

2100Z

51654



2130Z 51657

2200Z 51656



2230 51663

2300 050° 6K

51666

23202 045° C/E

23302



00002 51684

30 MAY 75  
15-2  
14  
15-2

00302 51690

01002 51694

30 MAY 75



7C15-3

0130 045° GC 51708

0200 045° GC 51720

0230 045° GC 51742



03002 045 6 (K) 51756

0330 045 6 (K) 51757



0400 045' 6Kts  
51745

0430 045' 6Kts  
51746

0500 045' 6Kts  
51754



51763

05302

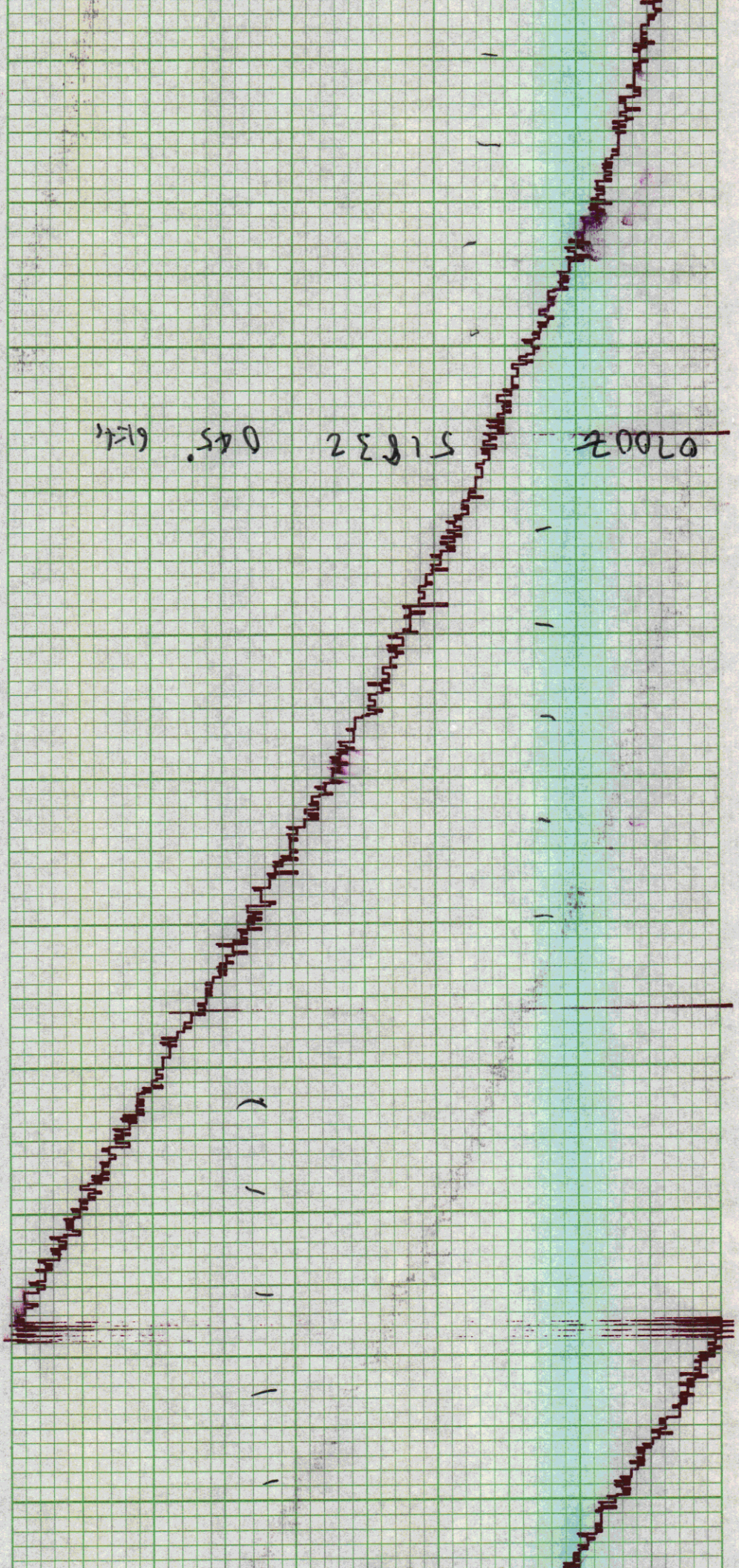
06002 51786

045° - 6 LN -

30 MAY '75

51805 06302







51923

0830 Z

0450

51950

4.5 kts

110040 Z

52026

0900Z



0930Z 52052

1000Z 52069

1030Z 52071



1100Z 52073

1130Z 52073

IG 15-2  
MAGNETICS

30 MAY 75

1200Z 52065



12502 52057

1500040 66 52061

1330 040 66 52068



52070

14002 040° 6K75

52069

1430 040° 6K75



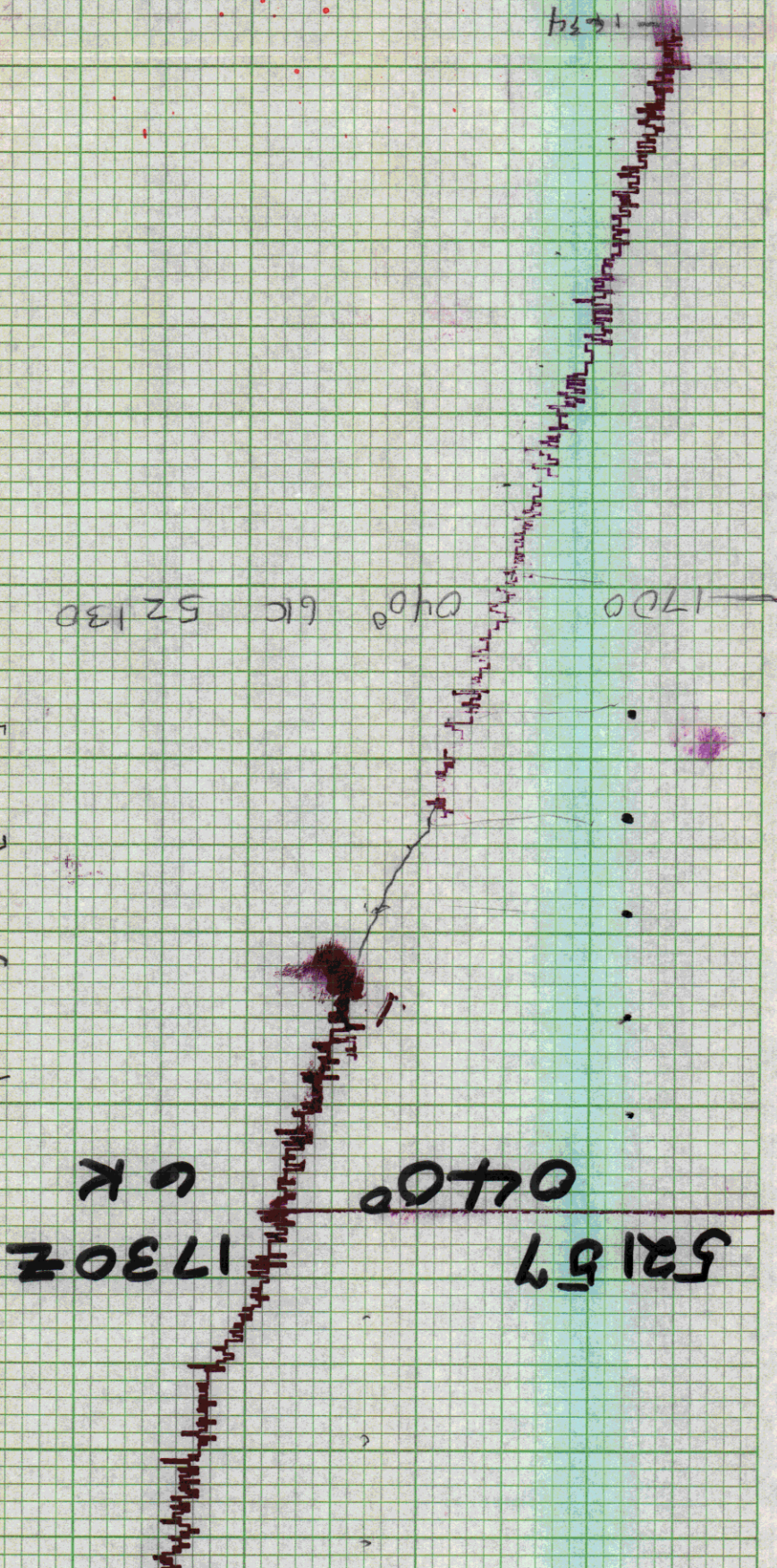
52077

1500 040 6K

1530 040 6K  
52081

1600 040 6K  
52090







CK

52976 18002

52176

050

5479 - 050

88125 - 29581

18002 050 - 645

52191



52196 050° 1930Z

6K

2000Z 050° 5220Z

6K



20302 52206

21002 52206

21005

21302 52209



22008

22302

52228

22008 52243



2330Z 52252

0000  
522438

0030Z 52252

31 MAY 75



01008 52266

31M1475  
IG 15-2

52277

0130 060° 6K

52284

0200 060° 6K/s



0230 060° 6E 52294  
46075

03002 060° 6Kts  
52508

52514



0350 060° 6 kts

52310

0400 060° 52310

- 0426 118° 4 kts

0431 118° 4 kts 52314



81275  
0.811 47/17 2 2050

0121210

0581 2/7

06007 - 52297



52268 0630Z 125° 47K

Elc 121°

52247 0700Z 125° 48K

Elc 120°

52232 0730Z 120° 48K



48K 52208Z 0800Z 120°

52180 0830Z 120° 48K



58163

09002

120° 45k

09302 52148

10002 52136

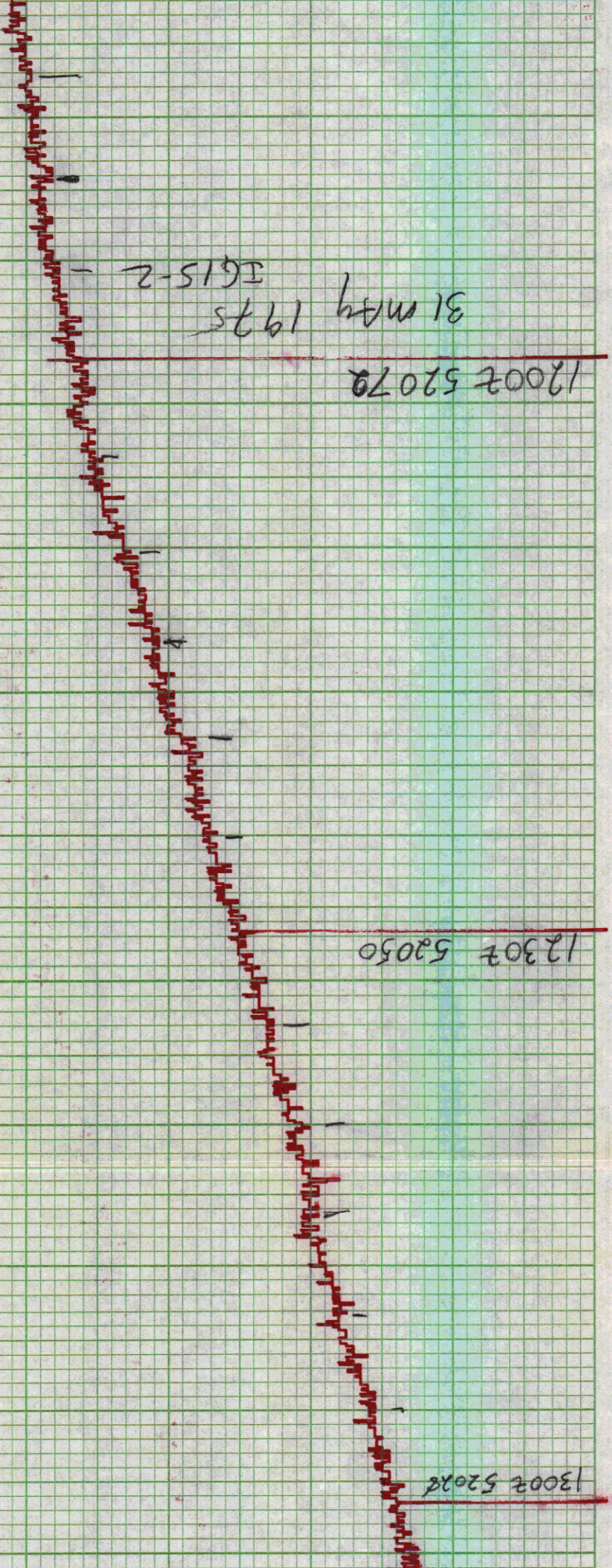


10302  
52121

11007 52101

11302 52085







IG 15-2

31 MAY 75

52014

1330 105° 4.5C 52014

1345 110° 4.5C

1400 110° 4.5C 52007



14302 110° 4.5 K 5900

1500 110° 4.5 K 51980

1530 110° 4.5 K 51962



51953

16002 4.5 Kts 110°

1630

110° 4.5 Kts 51941

17002 113° 51926

4.5 Kts



1730 51909  
C/C 115°

1800 2 51894

1830 2 51892 4.5 km  
C/C 116°



0211-10  
0211 4.5' 19002 62819

707 0911 19307 95815



20002

51816

115° - A.5

451015

51793

20302

115°

21002

51794



2130 028° 4.54 51785

22002 51799

22302 51809



8300  
51867

8308  
51821



00007 51830 1 JUNE 75

60202 C/C 038°

00302 51852

01002 51877 038° 45 Kts



0130 038° 4.5K 51903

02002 038° 4.5K 51925

0230 028° 4.5K 51938



0300

51958

51971

0330 022' 4.5Kt

51978

0400 025' 4.5Kt 51978

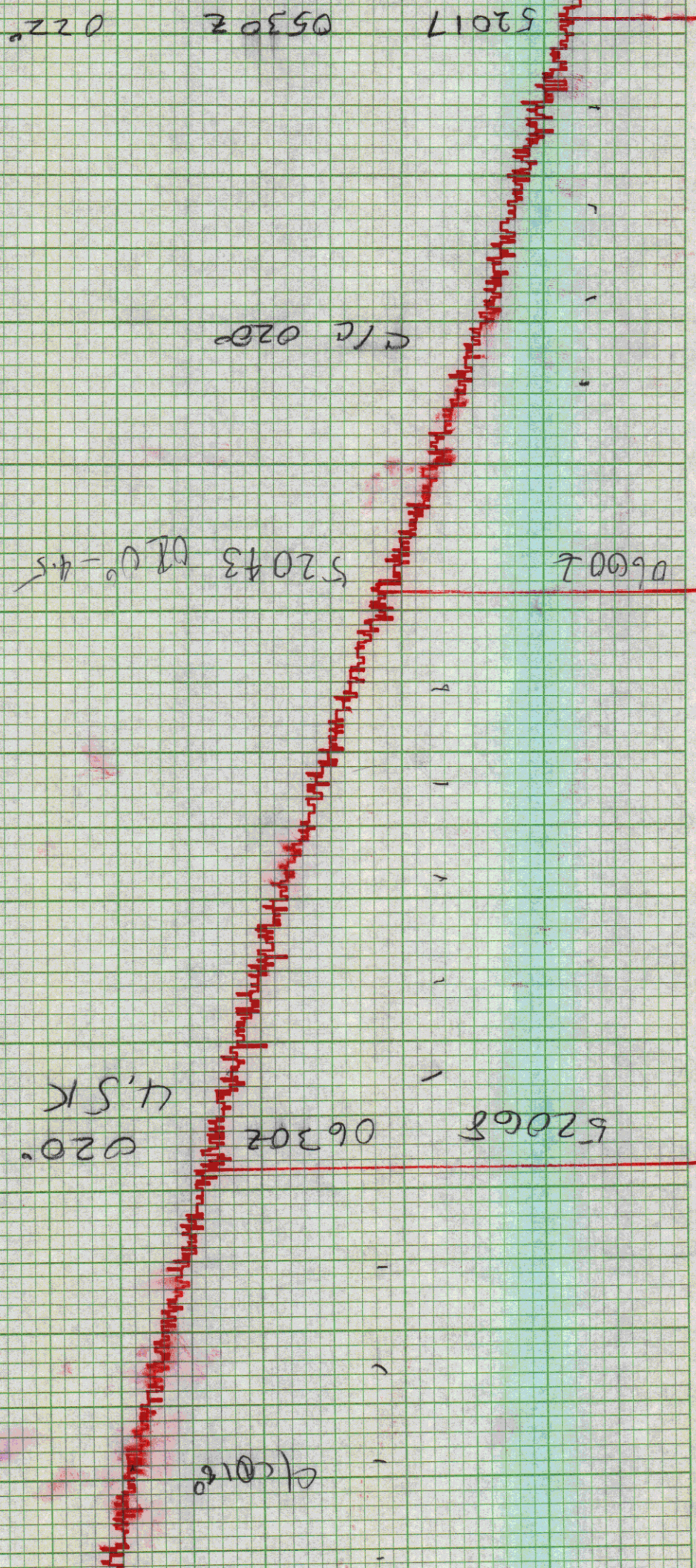


0430 022° 4.5K 51987

52201 0500Z 022°

4.5K







52087 07002 0 510

0150 510

07302 - 52100 0150 4.5

08062 52119 0150 4.5



013 - 4.5

52136

70580

09002 52156

09302 0130 4.5 KTS



10002 528 94 013° 4.5 kts

10302 298° 4.5 kts 52189



1100 55212 V 290° 4.5 kts.

1105 A/C 280°

11302 52218 V 280° 4.5 kts

12002 52218  
01 JUNE 1975  
MAGNETICS  
IG 15-2



12302 52217

13002 52208 290° 4.5K

1330 290° 4.5K 52214

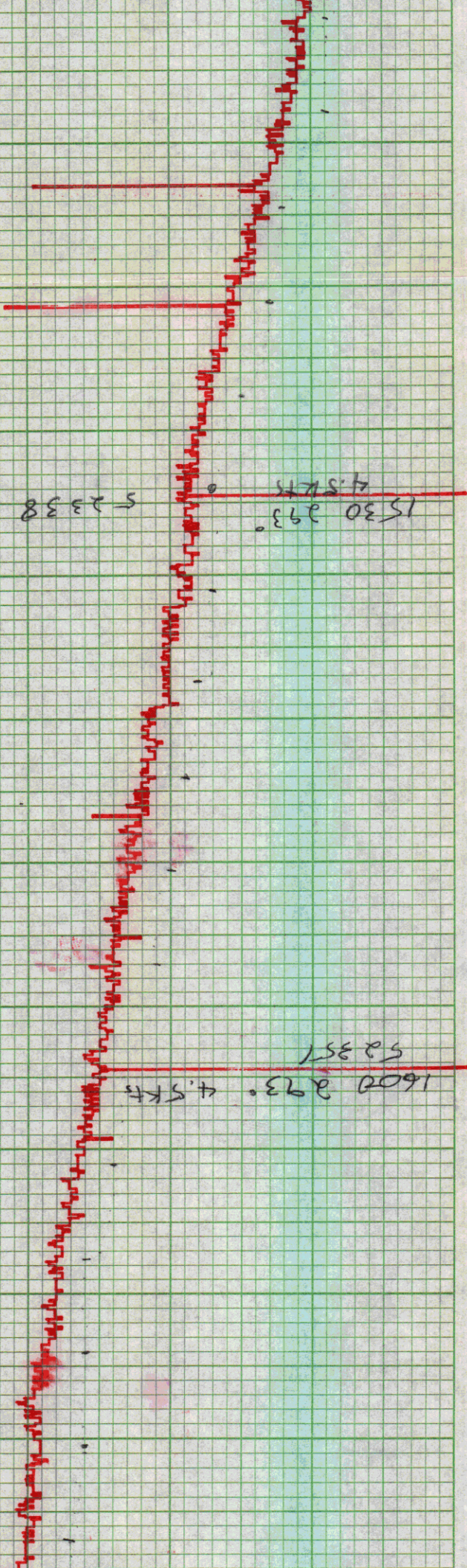


1400 293° 4.5k 52250

1430 293° 4.5k 52290

1500 293° 4.5k 52318







16328 289° 4.5 Kts  
52363

17562 289 4.5 Kts  
52387

CC 297°

17302 - 52404 287° 4.5 Kts

CC 284°



52425 1800Z 284° 4.5

52426 1800Z

52426 1830

52428 1900Z 281° 4.5K

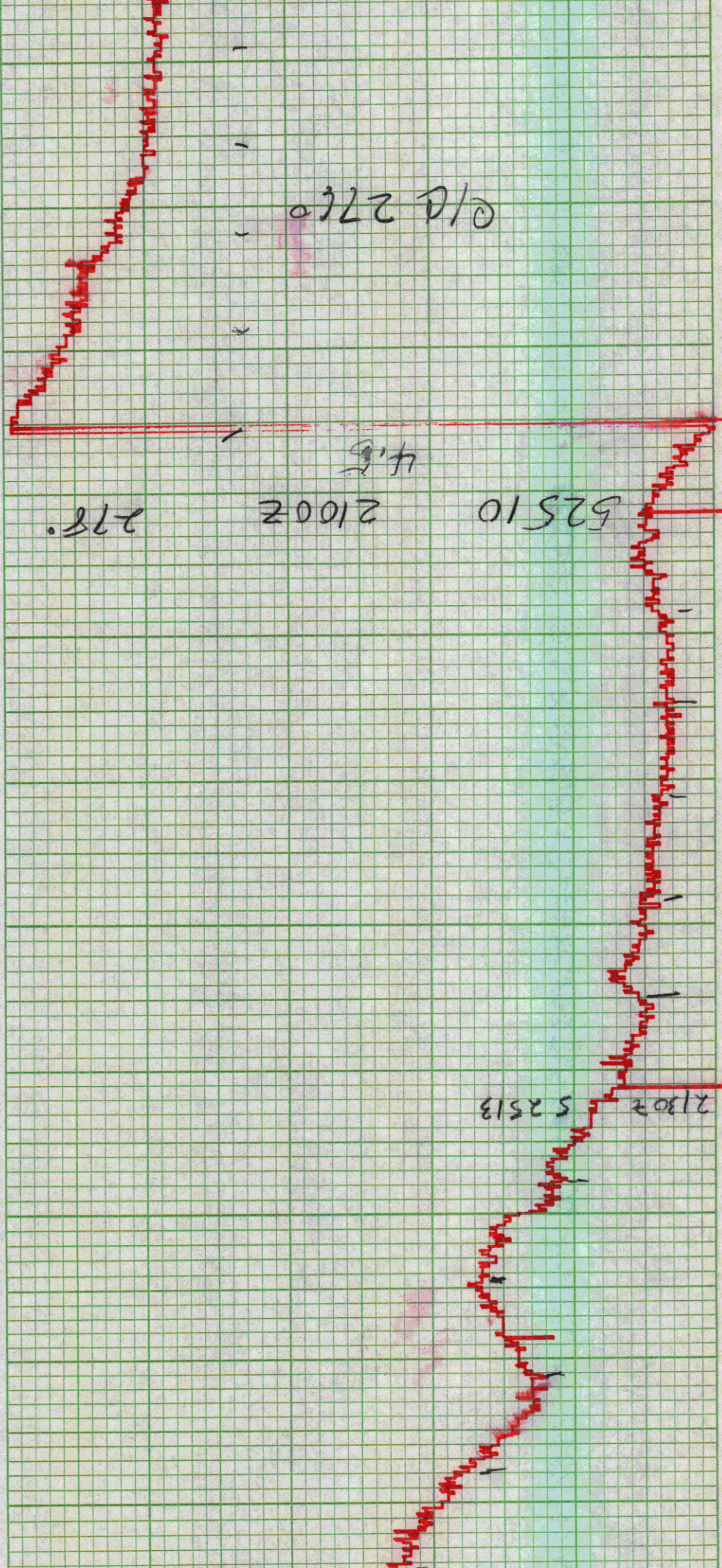


52444  
4.8K  
1930Z

52465  
2000Z  
4.5K  
2780

52476  
2030Z  
4.5K  
2780







2200Z 52548

2230Z 52529

2300Z 52544



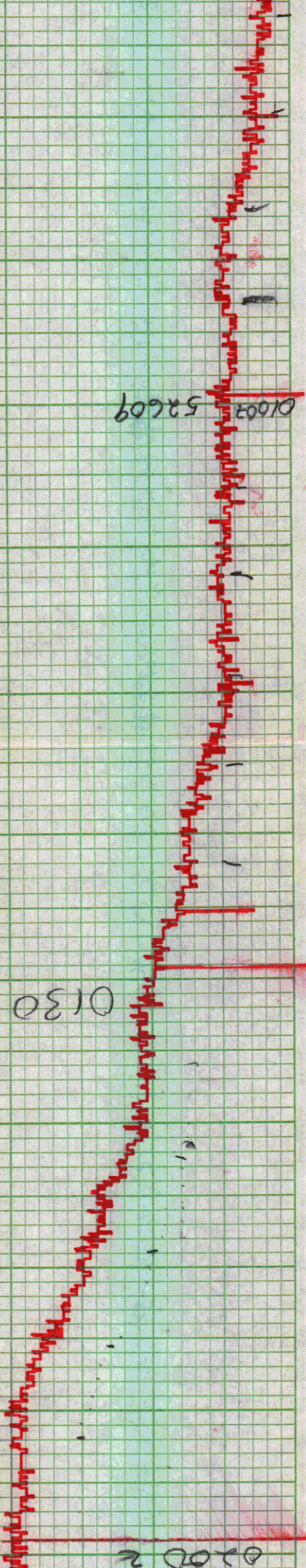
2550  
23002 52552

2552 46 215°

00002 52579

00302 52597





01003 52609

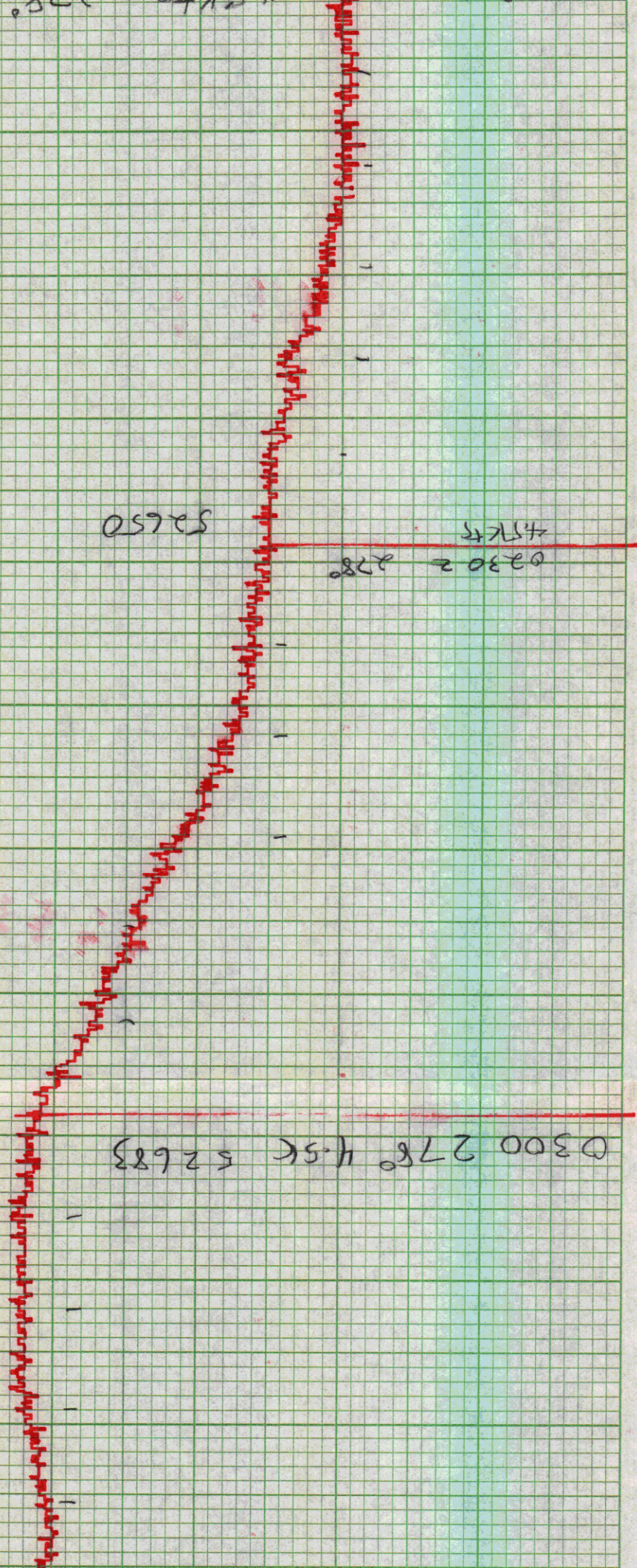
0130 275° 4.5 52620

52634

4.5 KTS 2.18

0200 2





52650

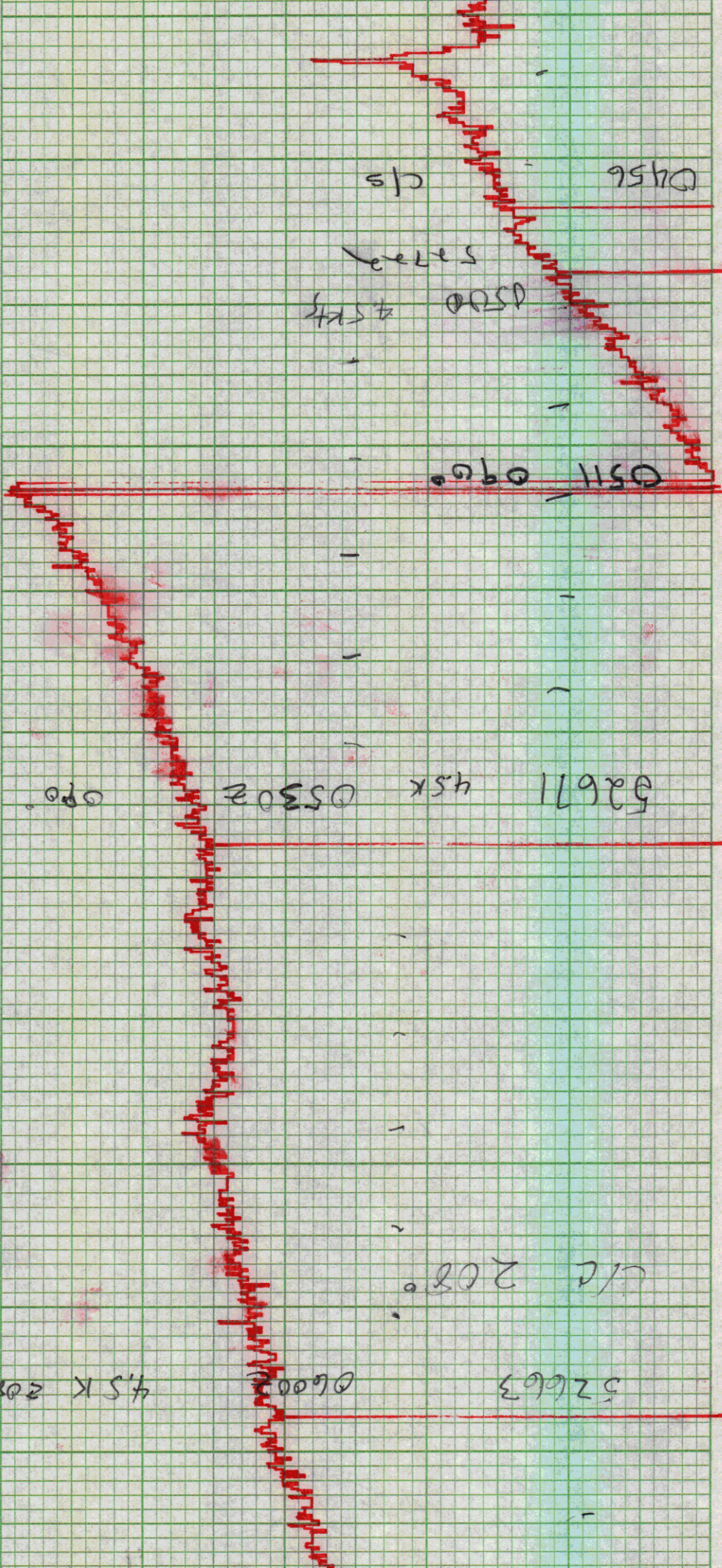


0330 261° 4E 526.86

0400 280° 4.5 kts  
1125 527.11

0430 280° 4.5 kts  
527.26







52638 208 06302 4.5K

52628 07007 - 2150 - 4.5

52613 07302 212 4.5



52601 0800Z 218° 45kt

52607 0830Z 218° 45



0900z 52576

0930z

1000z 52508

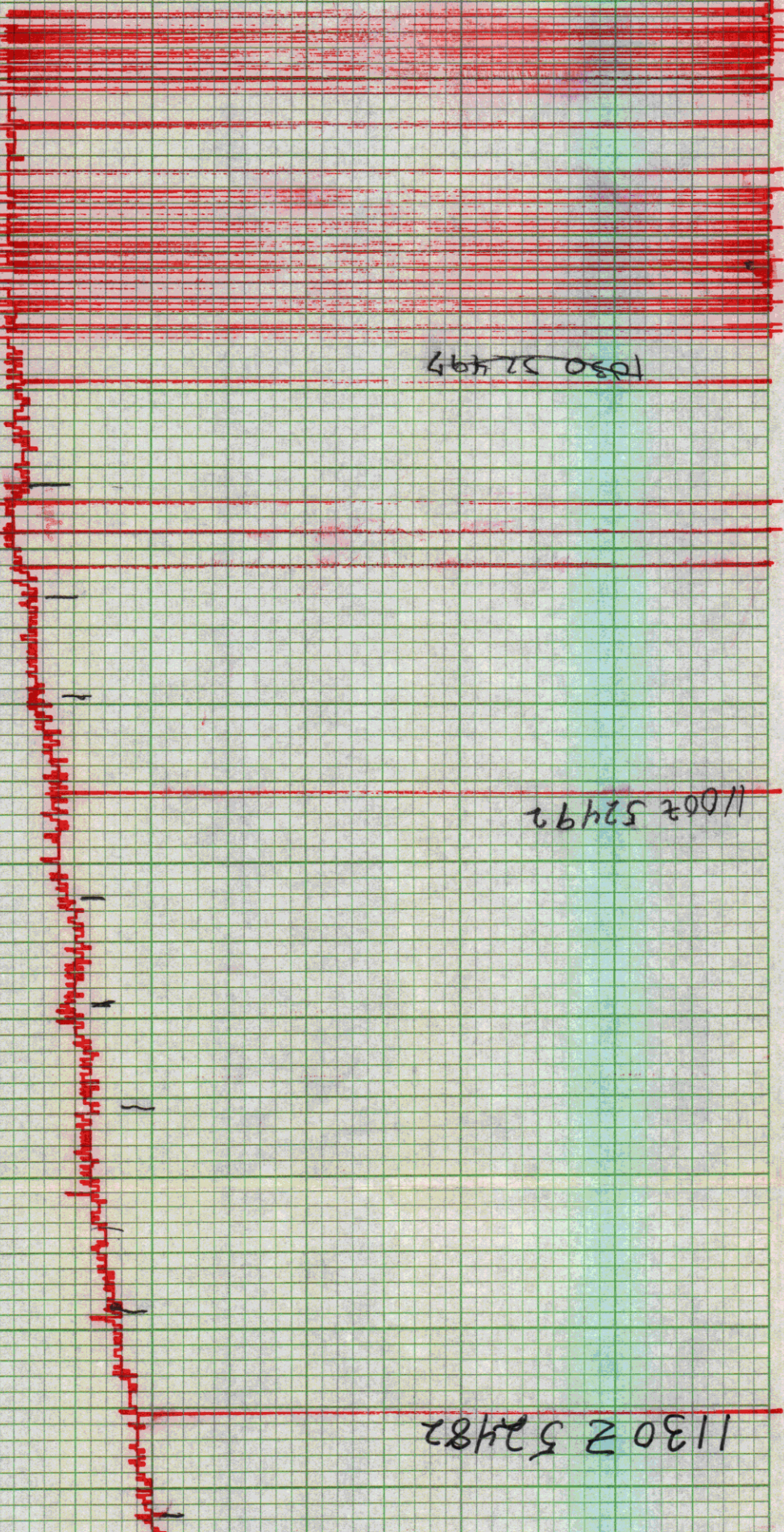


1130 Z 52482

1030 52497

1100 Z 52492

1130 Z 52482





12007 52464

12302

1300

218

4.50



02 JUNE 19

Margie

14002 4.5Kt 218° 52401

1330 4.5Kt 218° 52411

52423



IG 15-2

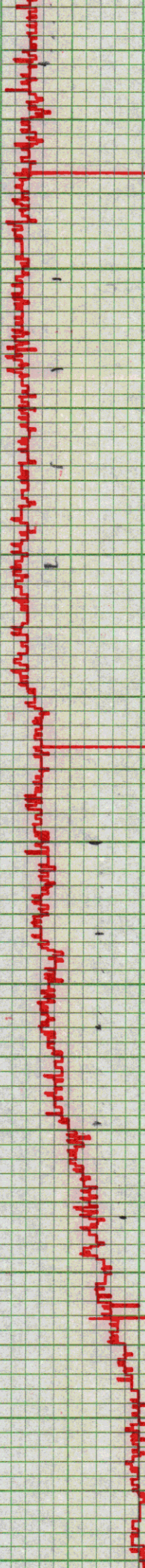
52397

1430 218° 4.5k 52397

1500 2130 4.5k 52395

52383

1530 4.5k 208°





1600 208° 4.5K 52380  
52380

1630 203° 4.5K 52369

1700 203° 4.5K 52343  
52343



c/c 2082

52318 - 2082 - 205° 4.5' 15"

17452 c/c 2070

52306 - 18002 207° 4.5'



52292 18302

20581 4750 102

8K C/C 204°

52292 19002  
802° 4.5K  
C/C 202°

52281 19302  
807° 4.5K

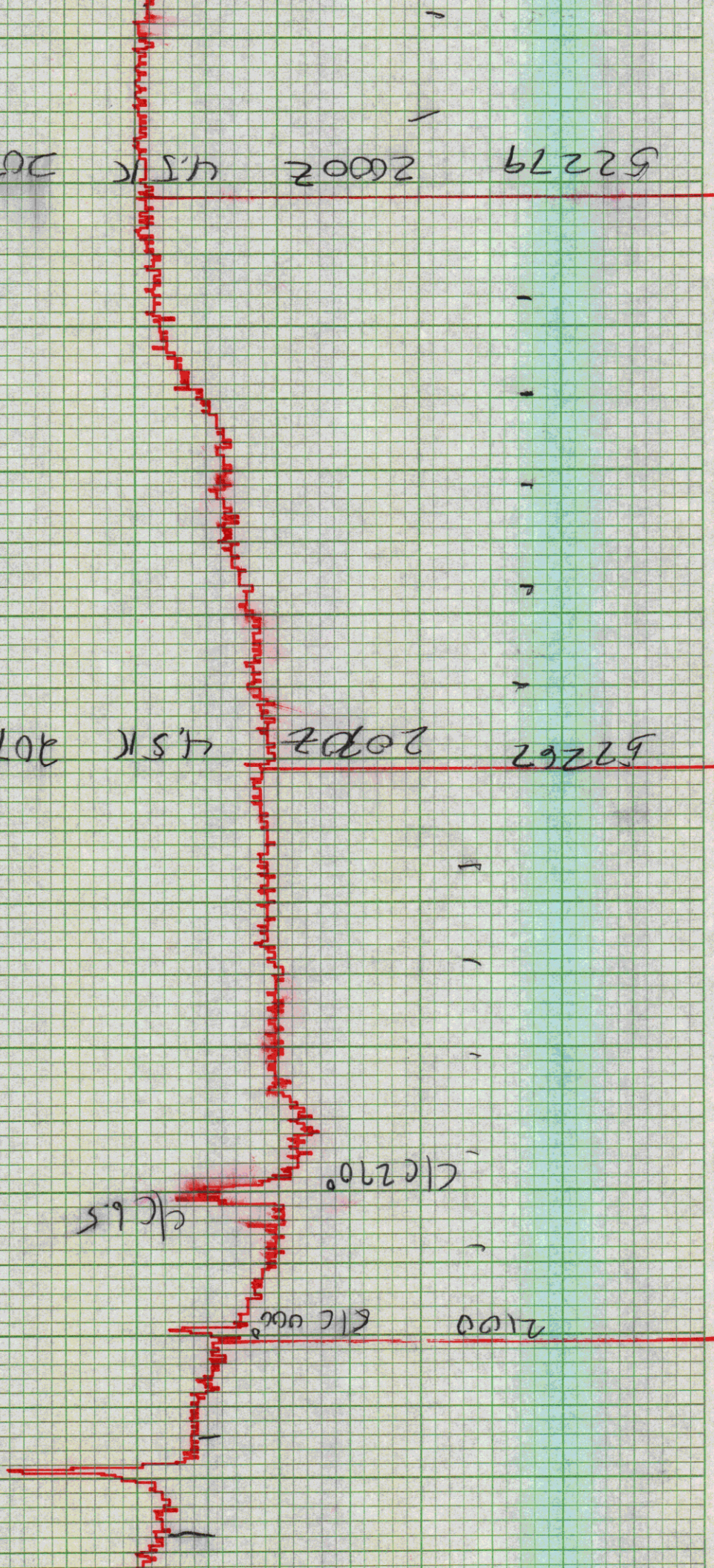


52279 2002 4.5K 2070

52267 2002 4.5K 2070

2100 2002 4.5K 2070

2100 2002 4.5K 2070





2250

22007

22307 52342



OFF - 2259Z  
02 JUNE 1975  
IG 15-2

MAGNETICS

END ROLL  
# 1

27 MAY 75 0250W75

2043Z 2259Z