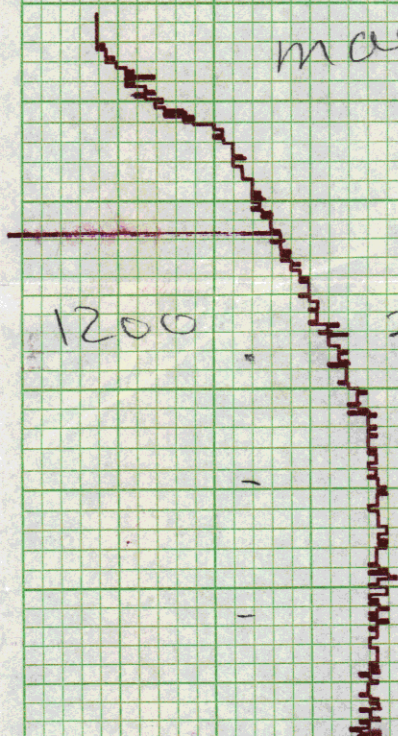


END
26 MAY 1975
IG 15-1A

magge to 1207



1200

210° 9K 50627

1130 210° 910 50623

1100↑

50580✓

8 KTS 210°
26 W/KY

1030

210°

50636

1000 Z 26 MAY

507568

20°

0930°

50762

8 KTS

0900 26 MAY 50612

50570

0830 Z

185°

78 KTS

50596

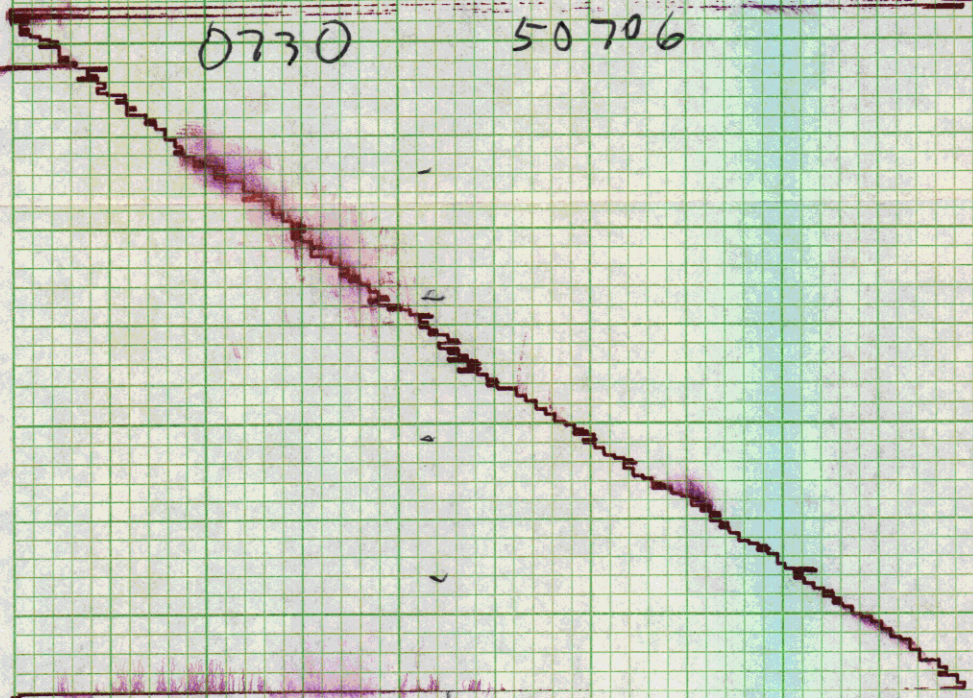
0800 Z

185°

8 KTS

0730

50706

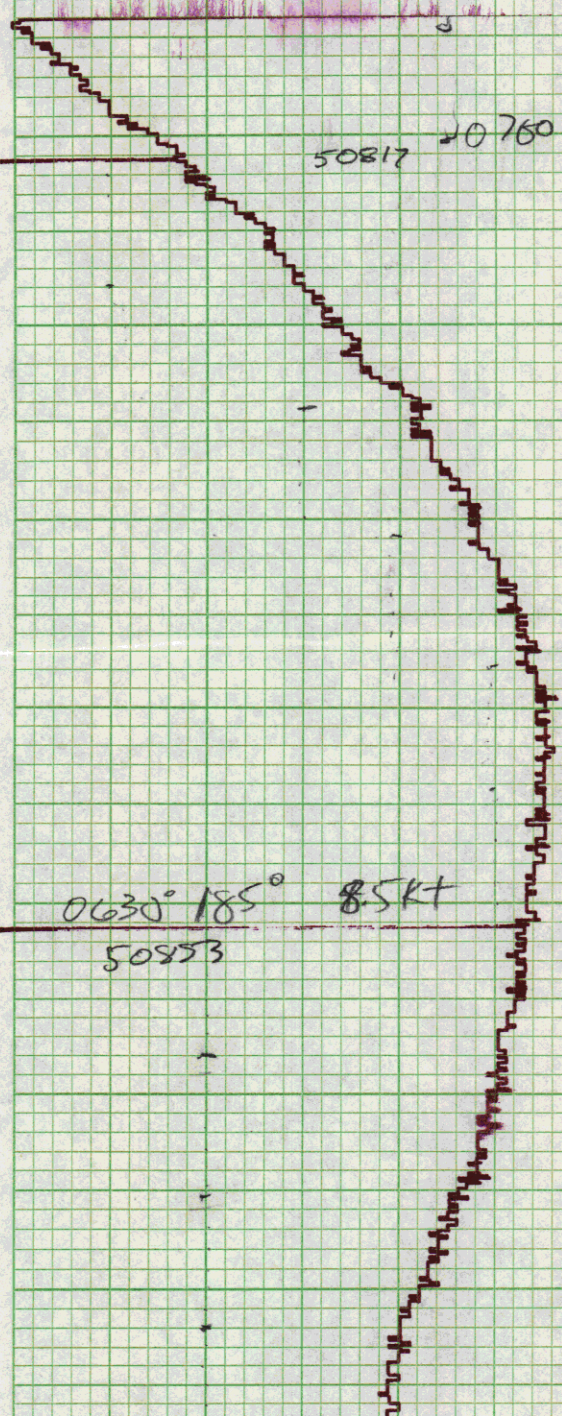


50817

20760

185°

8.5kt



0630° 185°

8.5kt

50853

0600Z 8.5kt RS

50839

0530Z 185° 10kt

50869

0500Z

185°
10kt

50948

0430Z - 51049

0400Z - 145° - 10 51086

195
10KAs

0330Z

51090

~~03002~~

03002

02302 51166

~~02302~~ 51222

0200z

51222

0140

~~2300 mass e off~~

2230z - 51243

c/c 180° - 4°

2700
51234^r
25 MAY
SKIS
090°

2130° 090° 51234 25 MAY

512115

2000

1000

51240

2100

103°

~~4.5~~ 5 KTS

C/C 090° 2040

51240

2030

103°

4.5 KTS

C/C 108°

1930 Z 110° 4.5 KTS

51256

1900 Z 110° 4.5KT
51258

1830 Z 110° 4.5KT 51279

1800 Z 110° 4.5KT 51276

1730 Z 110° 4.5kt

51278

1700Z 51276

CLC 110°

1630Z 51272

CLC 120°

125° - 4 kt,

1600 Z

51282

51300

1530 Z c/c 125° - 4 kt

51320

1500 Z - 130° - 4

c/c 130°

1430Z 51336

1400Z 140° 6KTS 51361

1330Z 140° 6KTS 51382

1300 140° 6K 51401

1230

140° 6K

51420

1200

140° 6K

51427

1130

150 6.5K

51428

1100

140° 4K

51429

1030

130°

4.5K

51439

1000

120°

4.5

51448

~~0930~~

~~115°~~

~~4.5K~~

~~51474~~

0900Z 4.5KT 094° 51505

0830Z 4.5KT 094° 51515

0800Z 4.5KT 094°
51513

0730Z 094° 4.5Kts
51520

51520

0700Z
4.5 KTS

094°

51642

4.5 KTS

0630Z

094°

51680

0600Z

4.5 KTS

094°

51699

0530Z

095°

4.5 KTS

0500Z

51725

0430Z - 51724

0400Z

51722

0330Z 51725

0300Z - 51725

0950
4.5 kts

0230z 51706

1430z 51700

0130z - 095° - 4.5 51713

0100 095 5.0

51645

0030 093

5K

51551

IG 15-1A

25 MAY 1975

~~0000 4C 093° 5K~~

51479

2330 096° 4.5

51465

2300Z-

51458

C/C 207 2230 51486

C/C 232° 2210

6415 2130 23 MAY 51684

2113 255°

2100 51736

2030 182° 7KT 51690

2000 182° 7KT 51607

1930Z 182° 7KT 51599

1700Z 7KT 182° 51600

1830Z 7KT 182° 51634

1800Z 4KT 182° 51718

1732 c/c 182°

7KTS

51722

1730Z

140°

1700Z

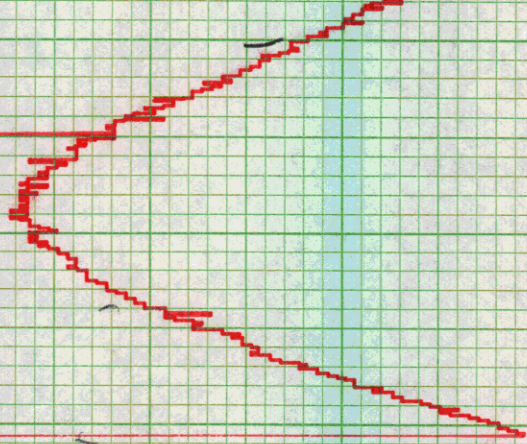
51855

140° - 7 kts

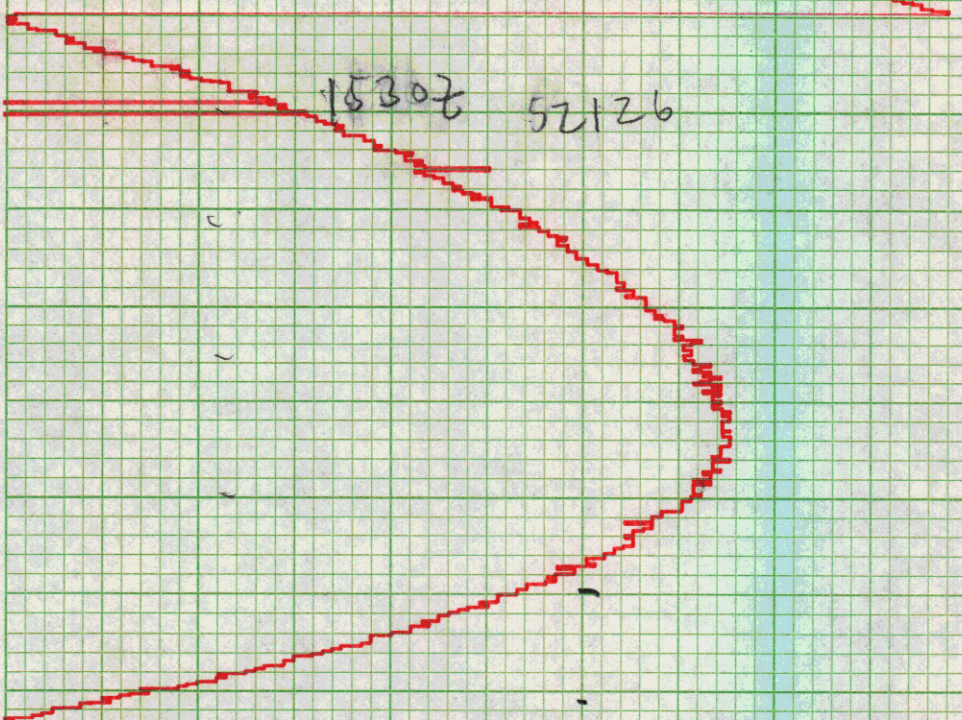
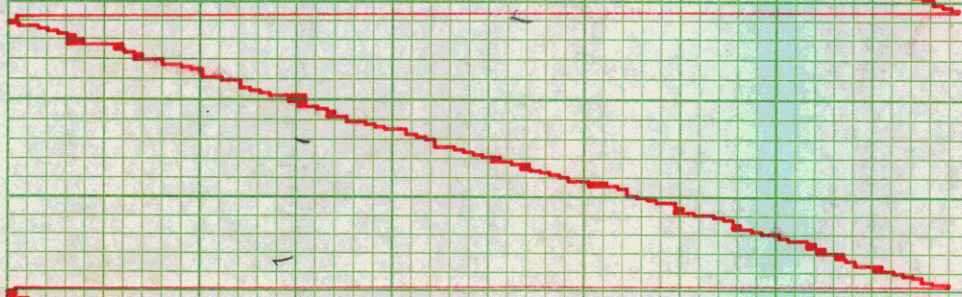
c/c 140°

1630Z 52068

1600z 51956

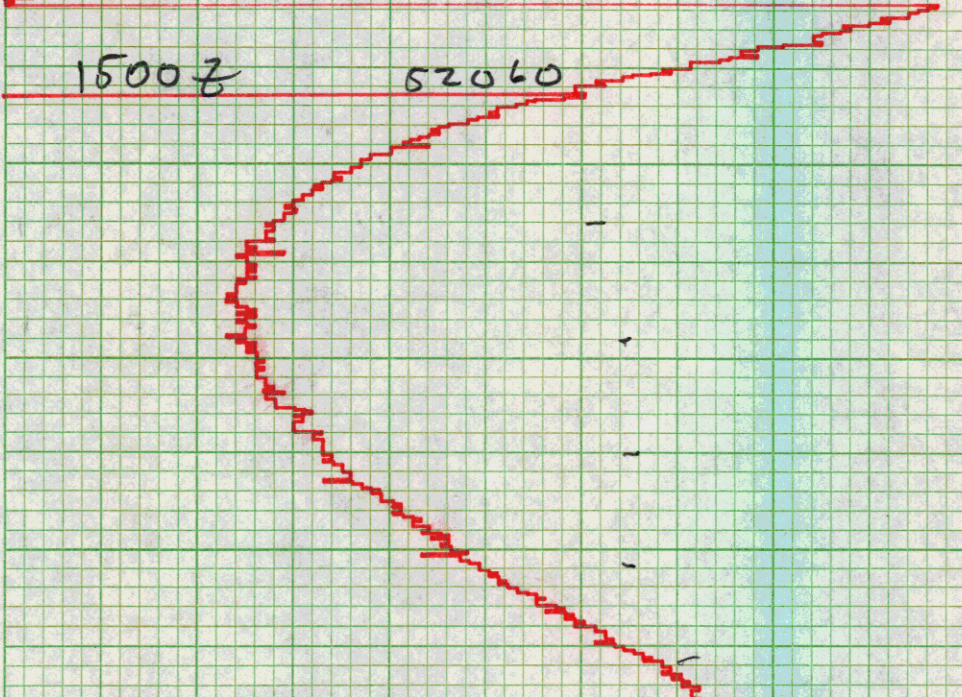


1530z 52126



1500z

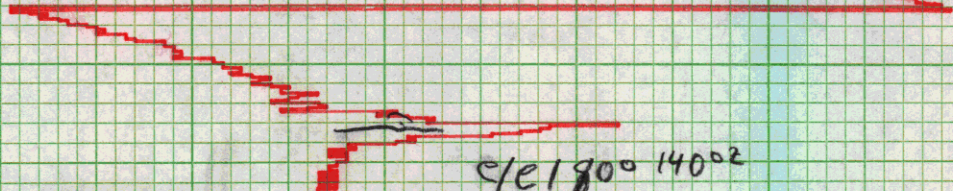
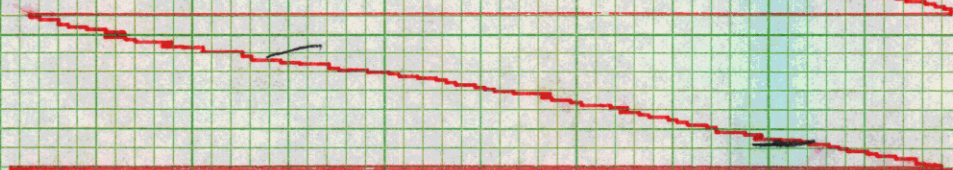
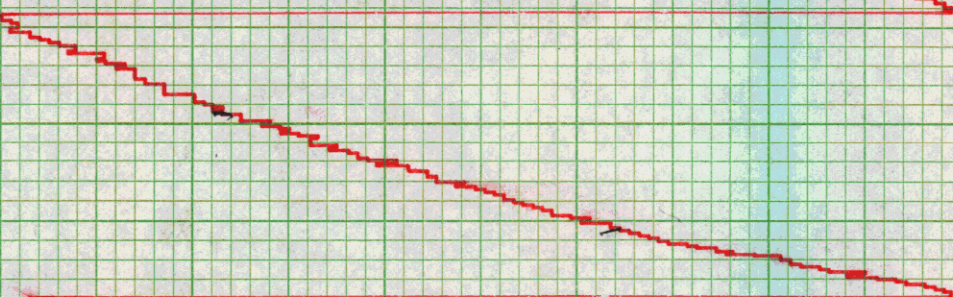
52060



1430Z

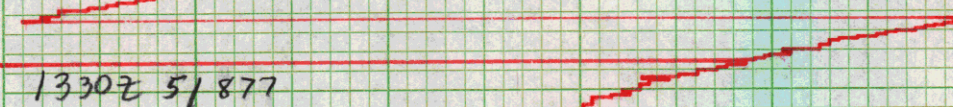
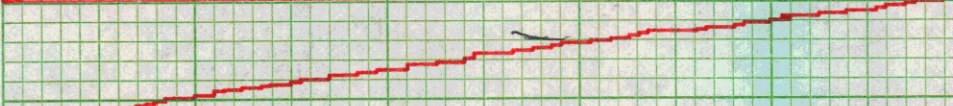
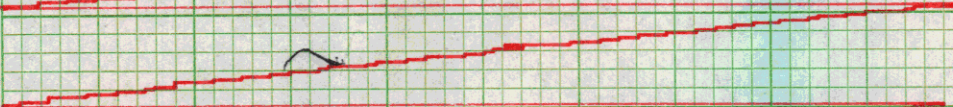
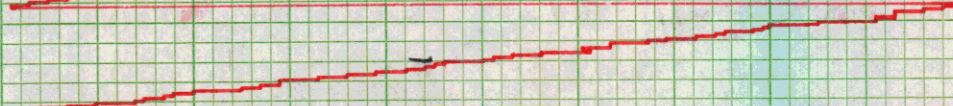
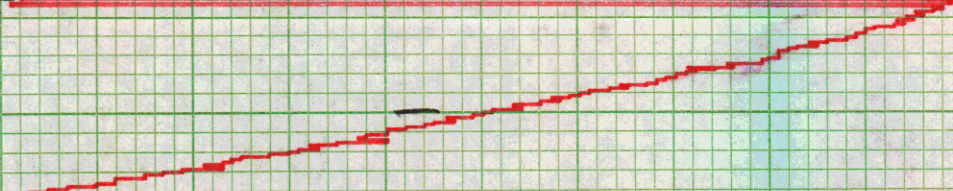
180° - 7 kts

52090

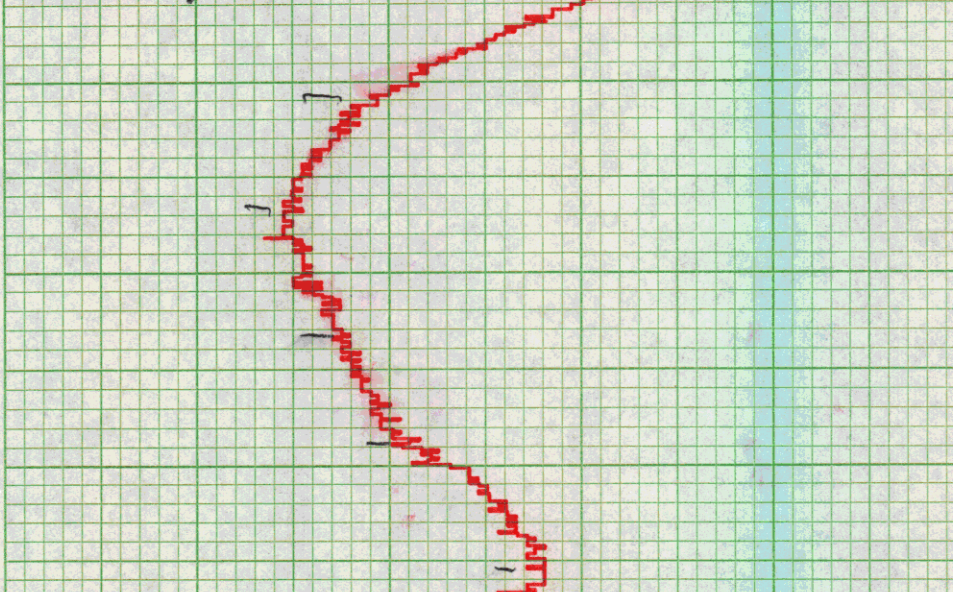


e/e 180° 140°

1400Z 52327



1330Z 51877



1300

130 7.0

51850

1255

110130 1157.0

1230

272°

51900

1200 269 4.5 51838

1130 265° 4.5K

51757

1100 265° 4K

51763

1030 267° 4K 51776

1000 267° 4K

51774

0930 267 4K 51751

51729

0900 Z 269°
4 KTS

51698

0830Z

271°

4 KTS

6000 Z

273°

4 KTS

51690

51698

0730Z

4 KTS

275°

0700Z 275° 4KT 51713

0630 275° 4KT 51746

0600 4KT 279° 51787

0530 Z 279 4KT 51830

0500 275° 4KT 51867

0430 Z 4kt
272°

51873

0400 276-4

51856

01C 276°

51806 0330

278°-4

0300

51777

02302

255° 5

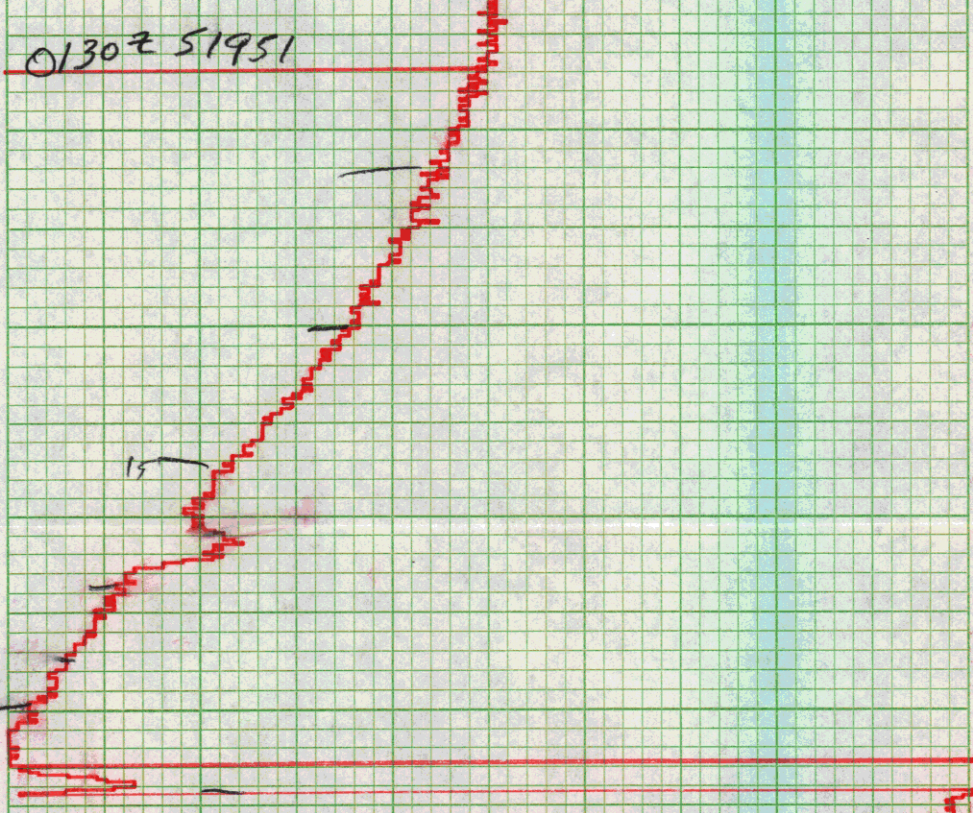
51888

02002

51927

4C 253° - 5

0130z 51951



0056 c/c 730



0030 1800 51900 23 MAY

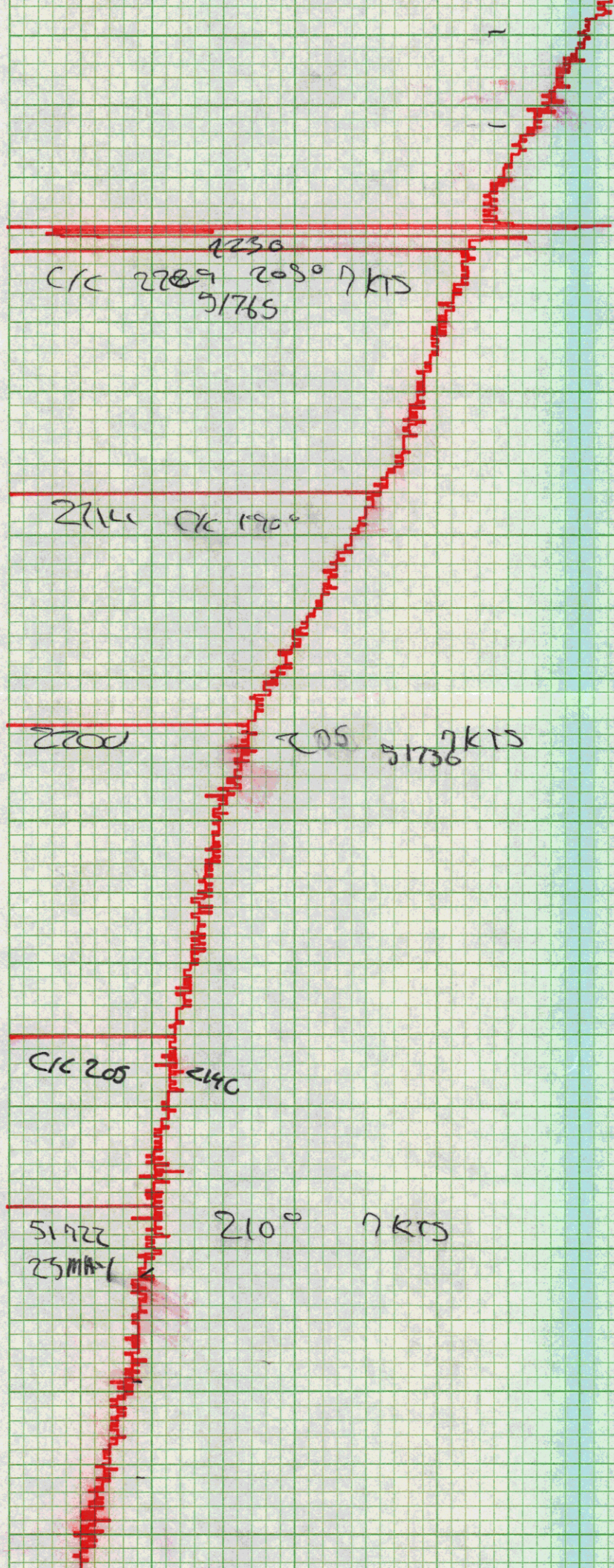
0000 180° 4K 51917

2345 CLK 180 2315

2530 260-6K15 51850

23 23 CLK 260°

2500 205° 23 MAY 51808 8



51704

2100Z

210°

7KTS

C/c 210° - @ 2030Z

51684

2030Z

240°

7KTS

51719

245°

7KTS

2000Z

1949 C/c 245°

1930 260° 7kt

51780

1906Z c/c 260°

1900Z 210° 7kt 51809

1830Z 210°

5kt

51804

c/c 210°

200° - 101

1800Z

51794

51780

1730Z

7KTS

0200°

1700Z

51792

1630Z

51821

c/e 200° 1506

1600 Z

51829

145° 9.0 kts

1530Z 145° 51806

1500 Z 42113 51800

1430 Z

51825

1400 Z

1550 J

51872

1330 Z 155 51901

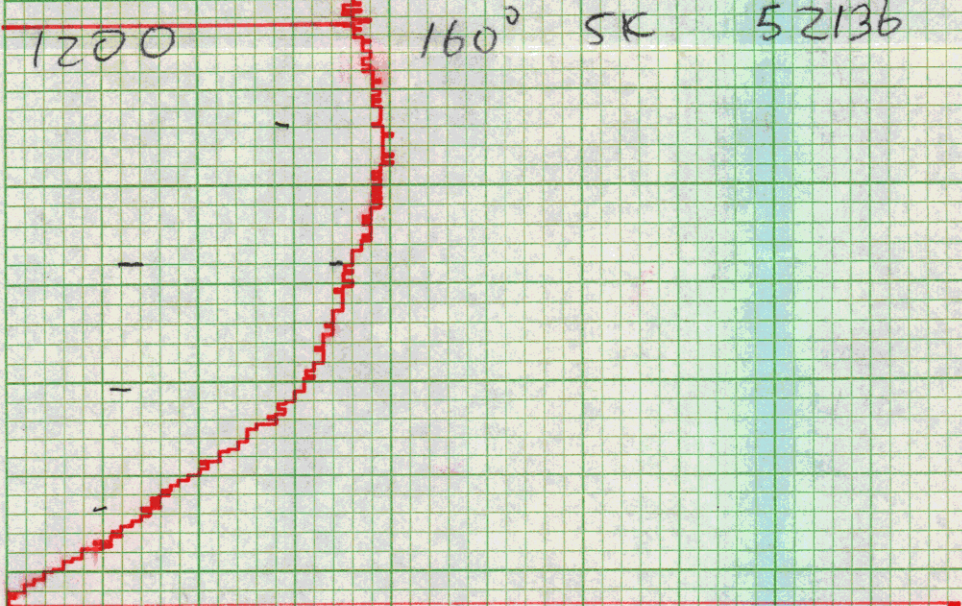
1300Z 160° 51950

1230 160°
5K 23MAV
52050

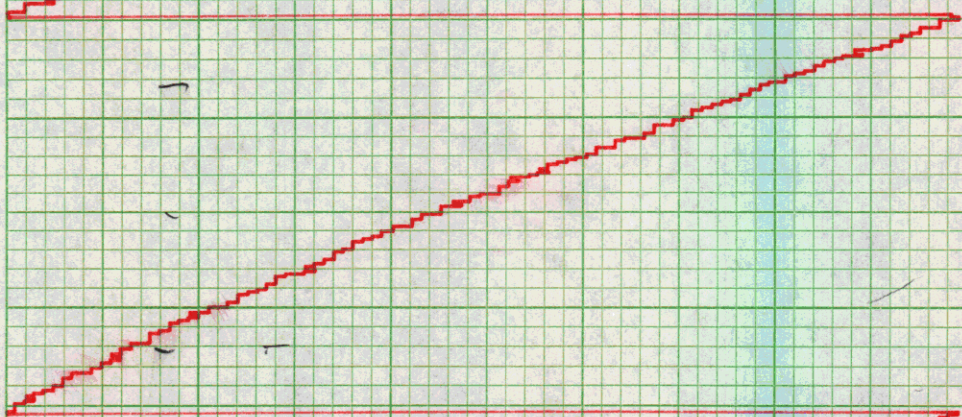
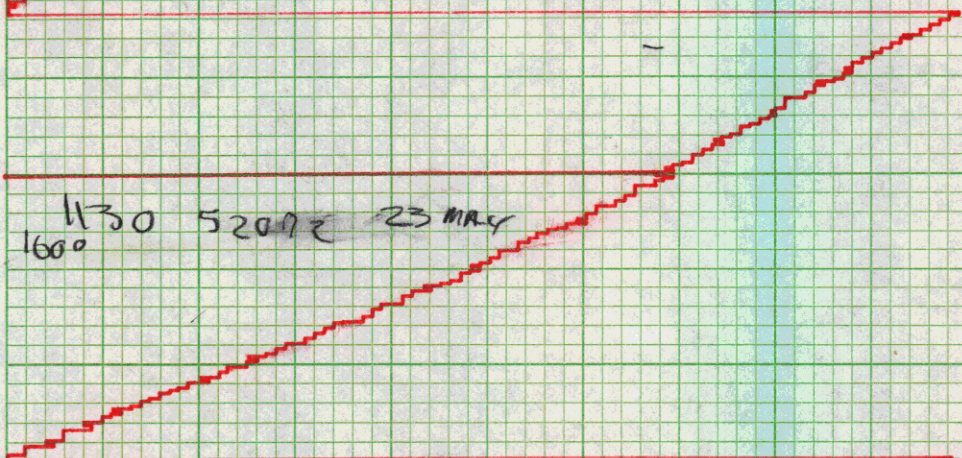
1200

160° SK

52136

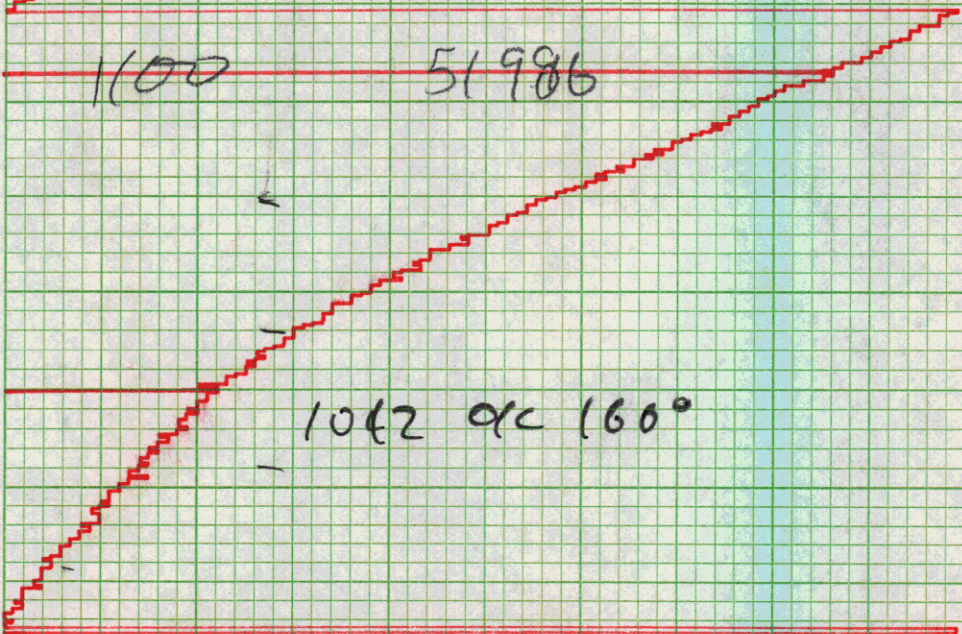


1130 52072 23 MAY
160°



1100

51986



1042 OK 160°

1030 170° SK 51790

1000 2170° SK 51809

0930 170 SK 51891

0925 dc 170°

0900 155° 3KT 51869

0830 155° 3KT 51812

0500 140° 4KT 51790

0730 123° 4KT 51778

0900 123° 4KT 51265 -

0630 123° 4KT 51757

0600z 123° 4KT 51769

0530z 123° 4KT 51775

0500z 51800

0430Z

51818

0400Z-

1230

4.5 Kts

51840

0330Z

51875

0300Z 51917 125-4.5

clc 125°

clc 127°

0230Z -4.5 51953
130°

clc 130°

0200 SKTS

01308 52034

0104

0043 127°

0030 123° SK 52074

not
calculated

sky

0000 123°

2343 at 123°

2332

2330

2300Z - 120° 5

52193

2230 120° 5K 52219

2206 c/c 120°

2200 125° 9k

52264

2130 Z - ~~115~~ c/c 120° 52278

2115 c/c 120°

2106 on

Maggie on 2106 Z
22 MAY 75

IG 15-1A

0955 MAGGIE OFF

0950 ds

4.0

MAGG

930⁰
52438 255° 21 MAY

52444

255°

0900 Z

7 KTS

52408

255°

0830 Z

7 KTS

52353

0800Z

255°

7 KTS

C/C 255 @ 0750

0730Z

52306

0730Z

250°

77 KTS

52291

0700

250°

7 KTS

0630
250°

52244
7 KTS

27°

7 KTS

52296

0600 Z

52385

27°

0530 Z

7 KTS

0510
c/s 7 KTS

0500Z c/c 270 52300

0430Z - 21 MAY

52296
155-4

c/c 155°

c/c 150°

0400Z

52357

c/c 145°

- C/c 140°

0330Z - 137° - 4kt 52397

0300Z 137° 52451

0230Z

~~0300Z~~ 52498

137 - 4

0200Z — 4145

52480

01572 e/c 137°

c/c 125°
S-4

52440

0130Z
21 MAY

0100 120° 4K 52577

0030 120° 4K 52513

0022 c/c 120°

0000 125° 4K 52596

2342 c/c 125°

2332 ON

2330 130° 4K

52587

2300 130° 4K 52570

20 MAY 75
IG15-1A

2230 -

52525 C/K 130° - 4

2200 118° 4.5K 52525

2152

- C/C 118

2130 115° 4.5K 52582

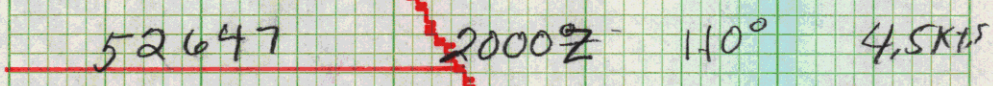
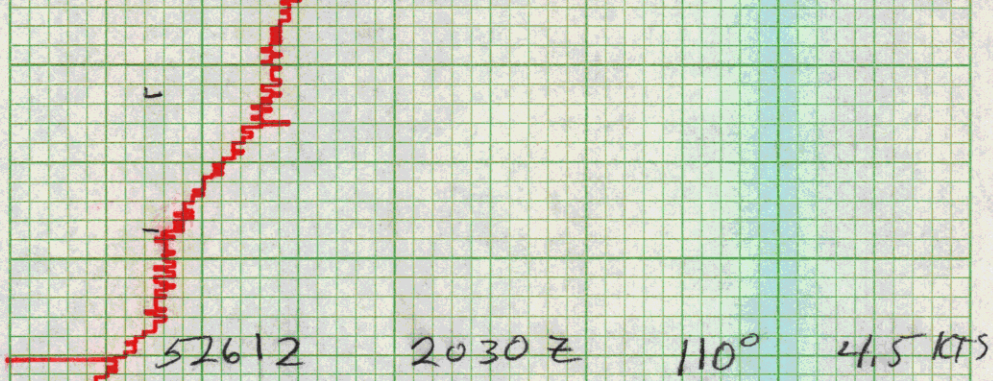
2102 C/C 115

52634

110°

2100Z

4.5 KTS



0/s 650 KPM



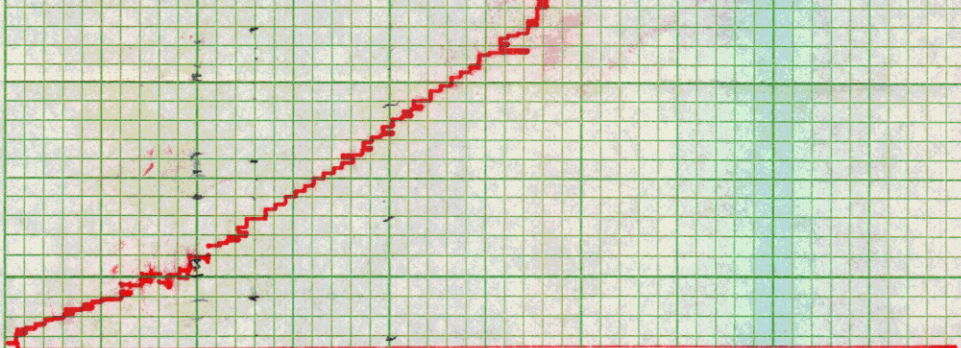
1900 110° 4KT
52635

1830z 110° 4KT
52765

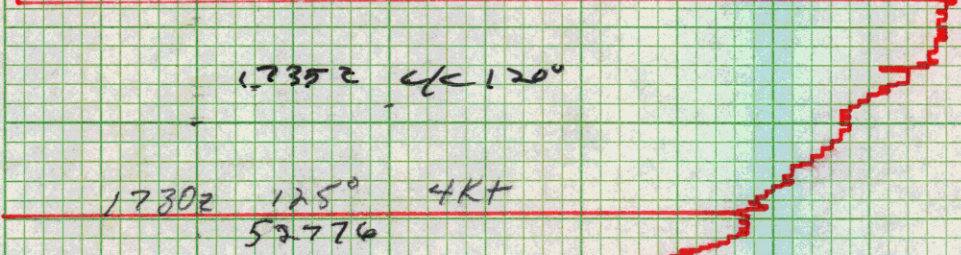
1816 z/c 110°

1803 c/c 115°

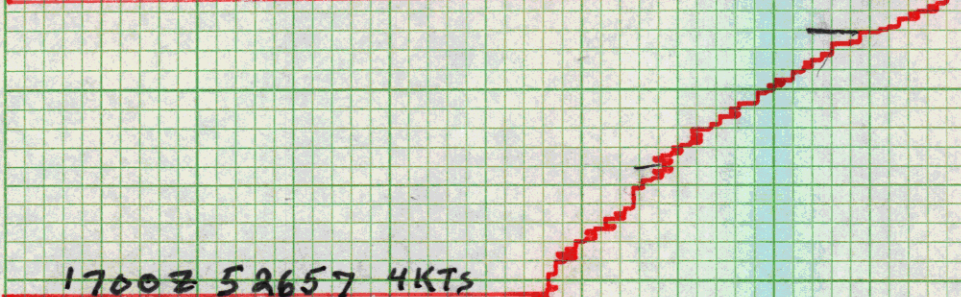
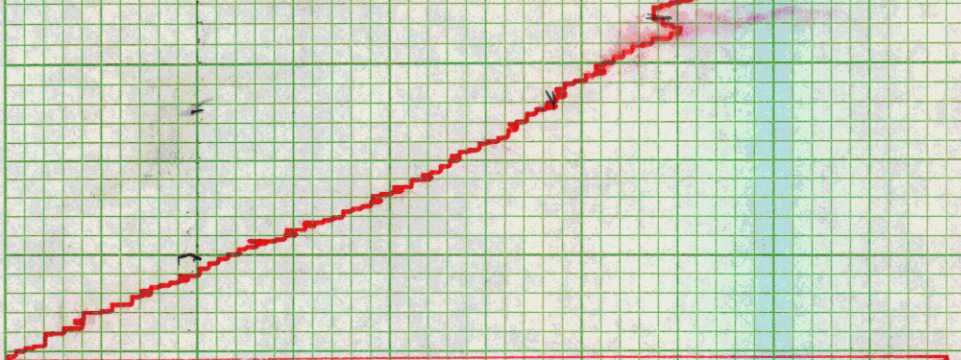
1800z 120° 4KT 52862



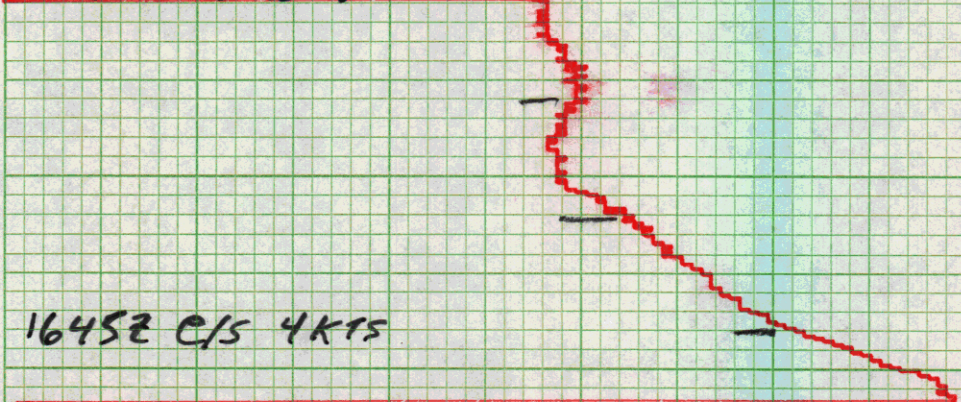
1735Z C/C 120°



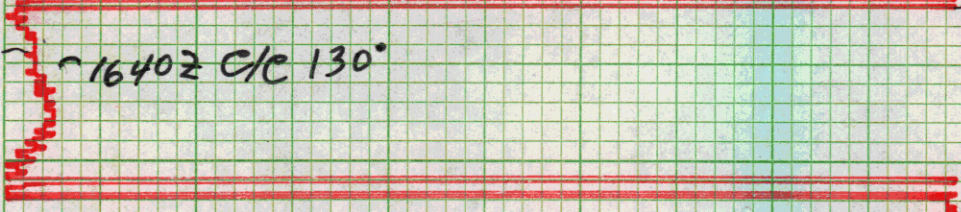
1730Z 125° 4KT
52776



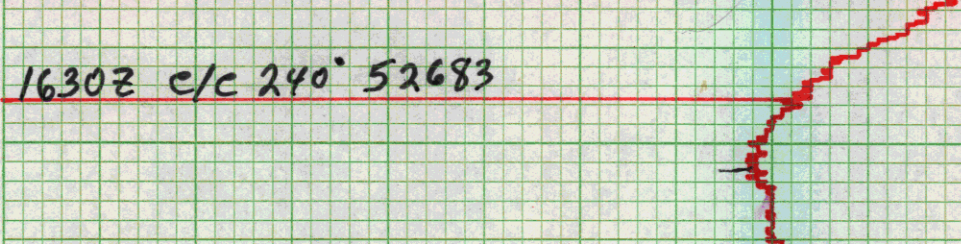
1700Z 52657 4KTS



1645Z C/S 4KTS



1640Z C/C 130°



1630Z C/C 240° 52683

1620 c/c 250°

c/c 270°

1600Z 52712

c/c 250°

1530Z - 242-7.5

52789

1560Z - 242-7.5

52801

1430Z 242° 52745

①

1418Z c/c - 242°

1400Z 52736

c/c 220° 13472

2000 - 7.5 kts 52763
1330Z

1300Z 0100 52790 6115
21 MAY 2000

52827 2000 7115
1230 21 MAY

5

1203 c15

1200 200° 4K

52945

1130 5K 53006

1117 c1c-200

1100 315° 4K

52985

1033 4c 315

1030 300 4k

52961

1000 310° 52898

0930 20 may

310°

52863

52847

0900Z

310°

4KTS

52850

0830Z

310°

4KTS

-C/C 310°

52845

0800Z

4KTS

305°

52855

0730Z

305° 4KTS

0700Z 305° 4KT 92879

0638 4C 305°

0630Z 310° 4KT 52877

0600z 4K+ 310° 52816

0530z 4K+ 310° 52795

0500Z

52715 4KTS

C/c 310' 240

315° - 4

0430Z

52627

<lc 315°

52625

0400Z -
4KTS

0350Z

C/c 307°

c/c 302°

0330 297-4
52600

0300Z 297-4~

52570

0230Z 52684

52732 02002

0130 52700

52417

0100 Gmt

20 MAY

SE-2

3

