

SE-2  
0100-20MAY-EMA

0059

20MAY

529188



0030 cr 2990 52986

0030

53053



2330 300° 4K

53007

529

~~2230~~ 300° 4.5K 52791  
2300

~~2245~~ 434

2230 300° 4K 52626



2212 c/c 300

2203 c/c 280

2200

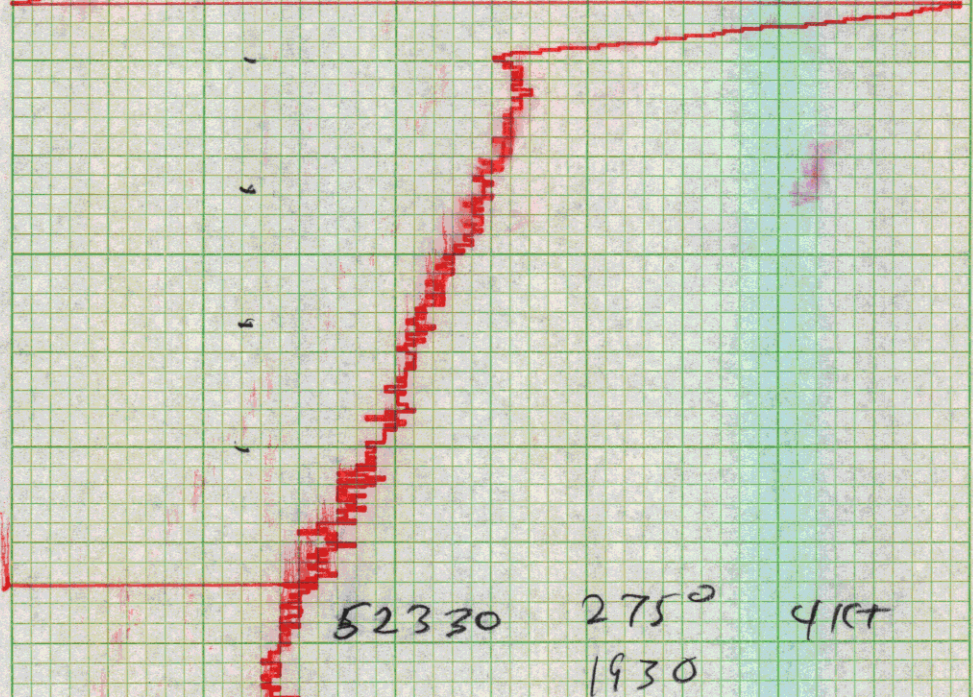
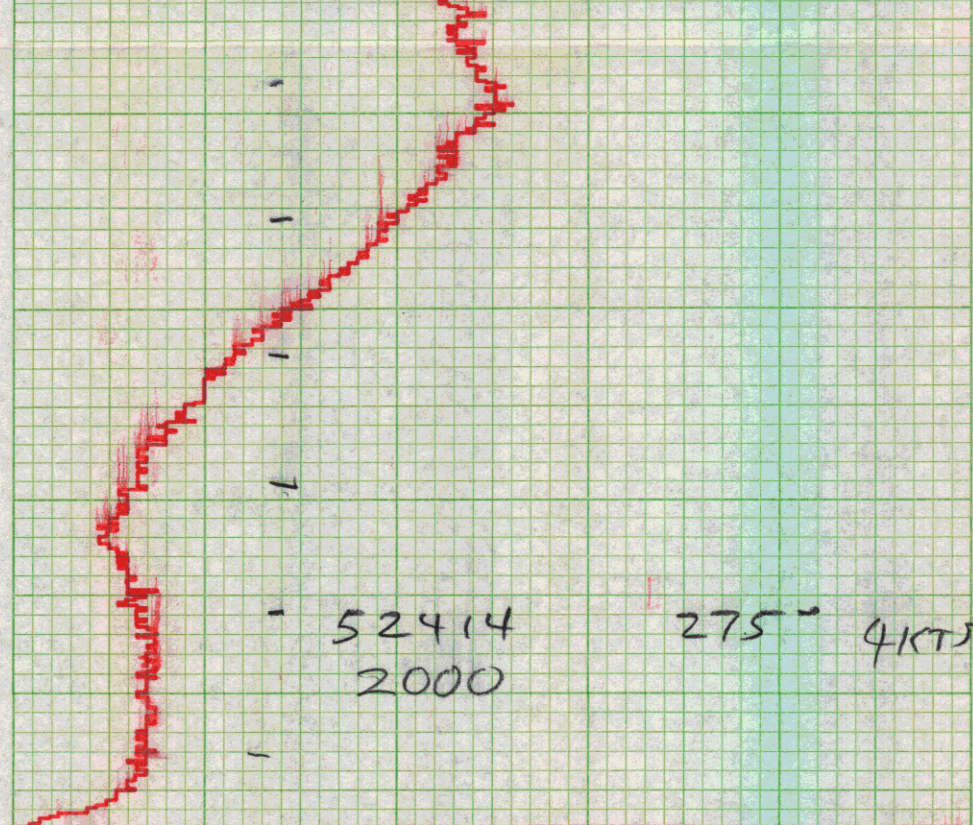
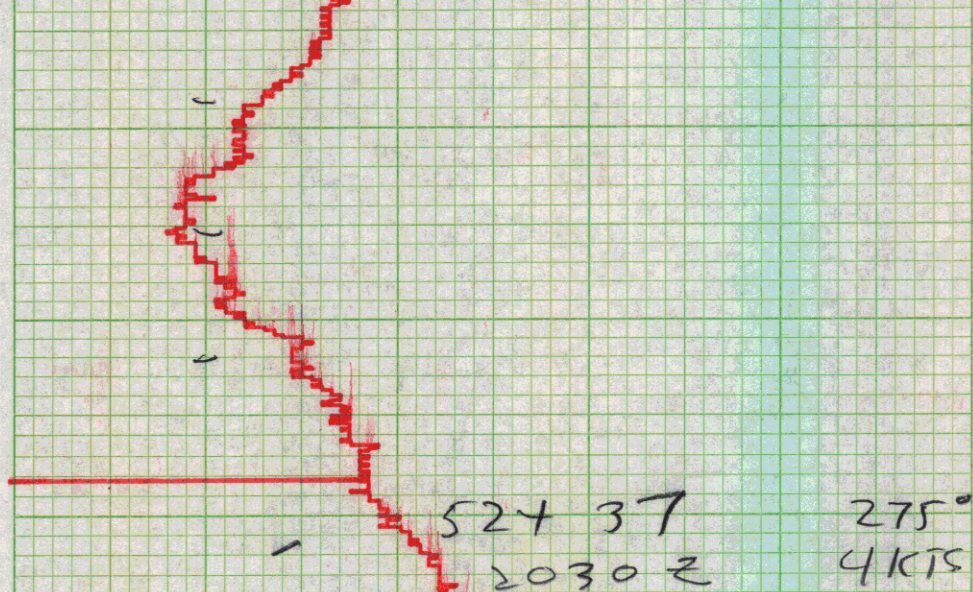
2142 c/c 260°

2130 275° 4k 52484

2100 Z

275° 4 RTT  
52454







1900 275° 4K 52307

18302 275° 3K 52276

4/22750  
18132



1800  $\approx$  285°  
Kt 52226

c/c 285°  
- 1753

1730  $\approx$  270° 4Kt 52188

c/c 270° 1710

1700  $\approx$  52149F 260°



1630Z 52126

260° c/c 1623Z

1615 c/c 270°

1613Z c/c 280°

1607Z c/c 290°

1600Z 52054

1557Z 300°

1540Z 310° c/c

1530Z 52000



1500Z 52076

1450Z 240° c/c

1430Z 52126 c/c 220°

1415 c/c 200°

c/c 180° - 19 MAY

S-1 1400Z 52260



1330Z 160° 52368

-C/C 160° 1320Z

1300Z 52451



52512

1250

1200 52539 x

8K 170°

1140 c/c 170°

1130

195°

9K

52573



1100 195° 7K

52642

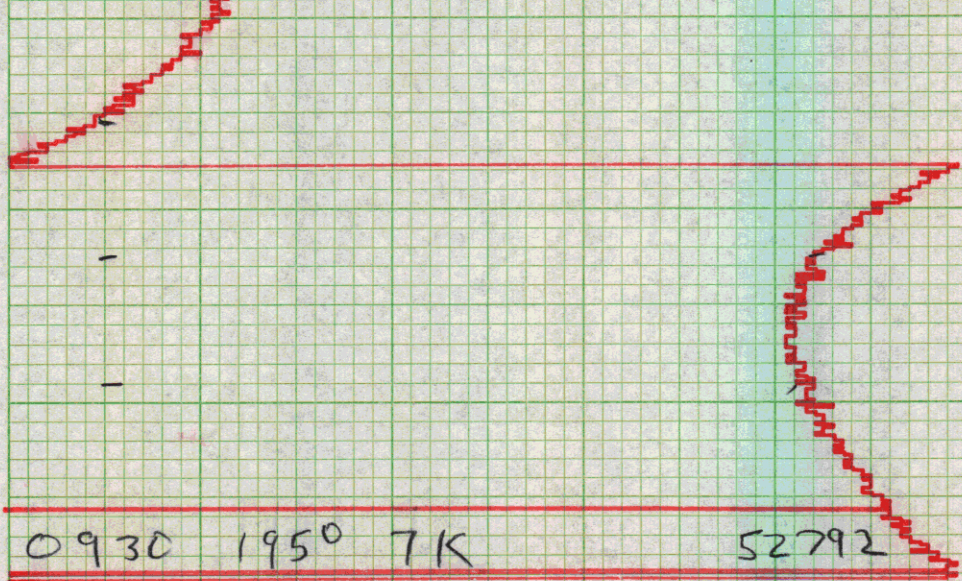
1030 195° 7K

52709

1000 195° 7K

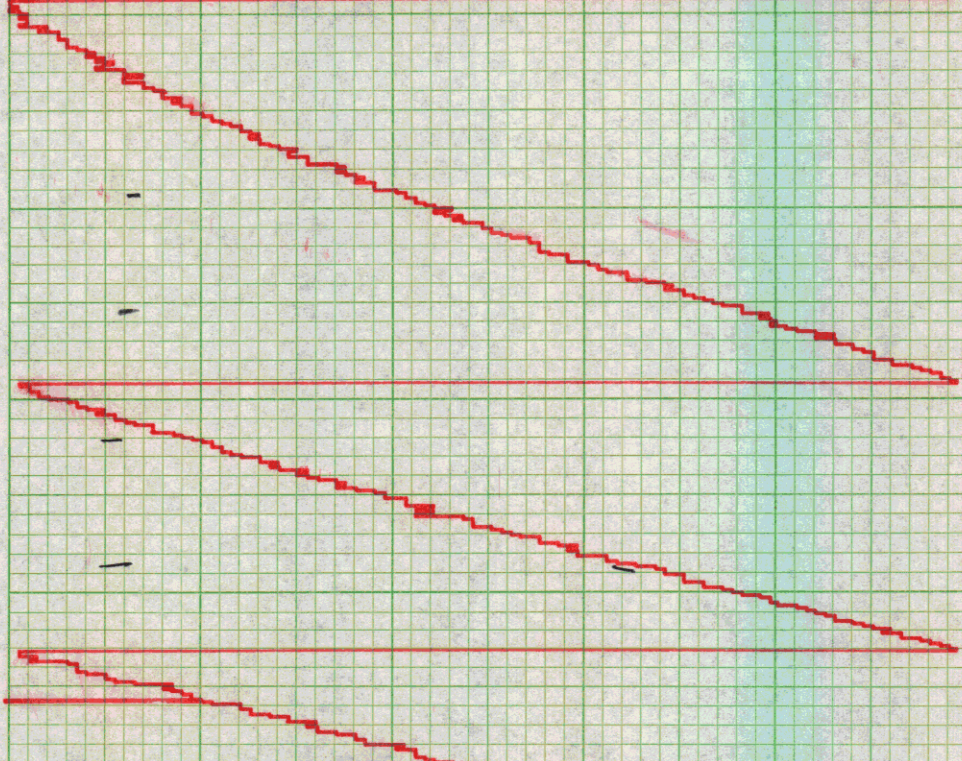
52776



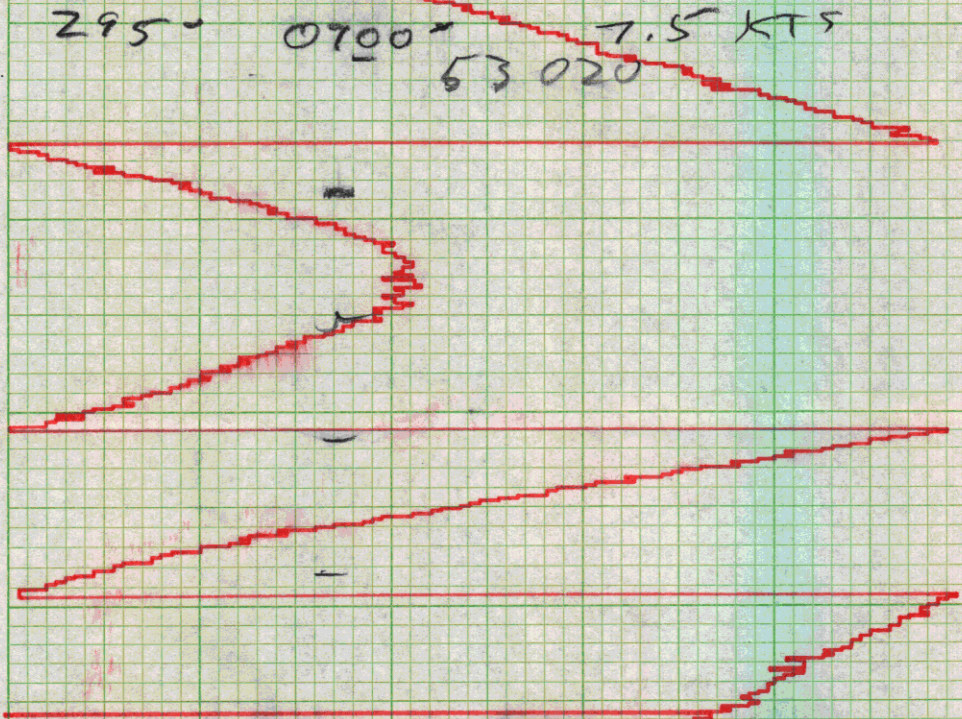


0930 1950 7K

52792



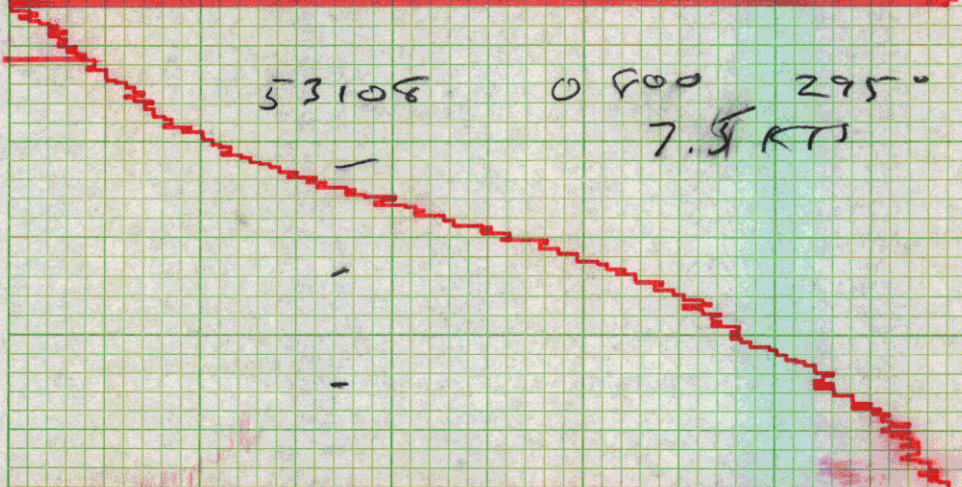
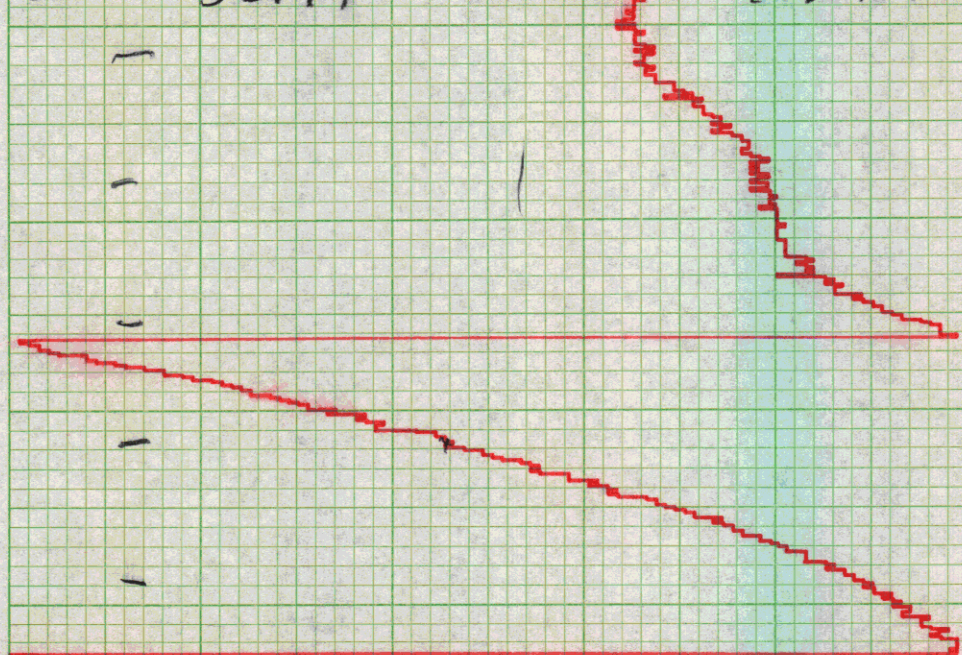
2950 0700 7.5 KTS  
53020



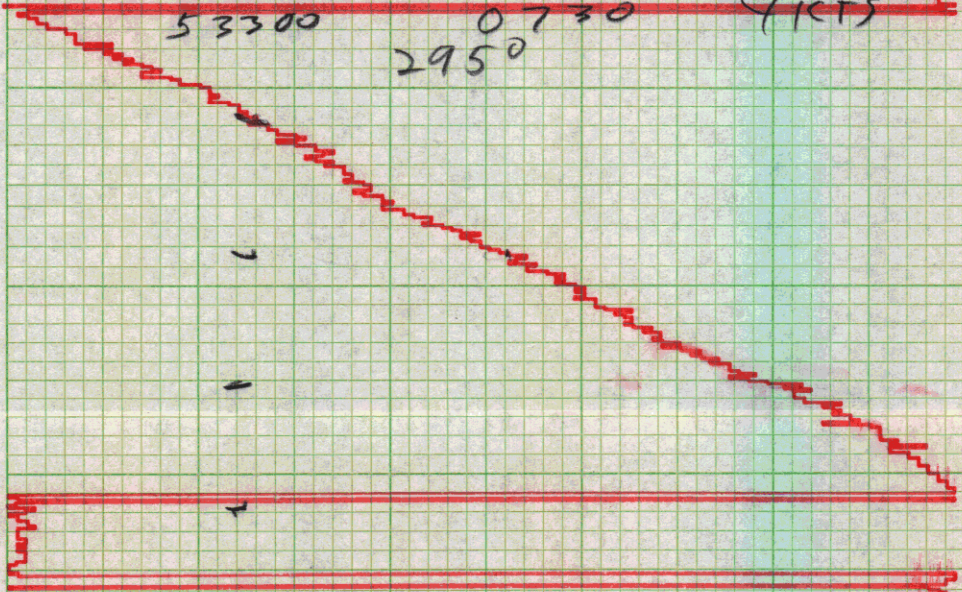
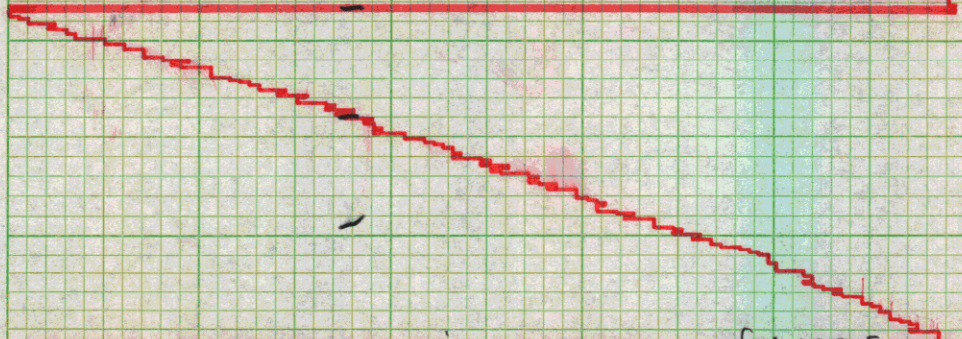
2950 52974

0830 7.5 KTS



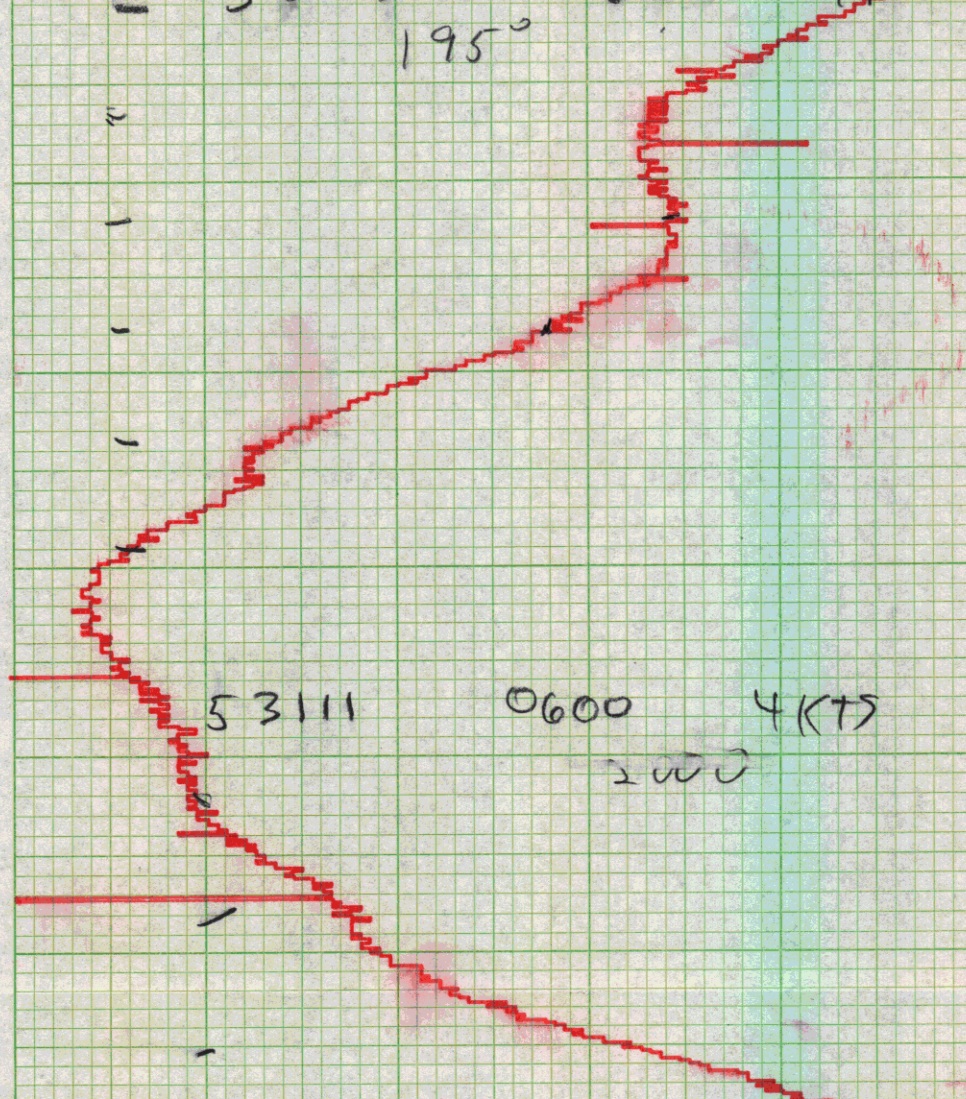
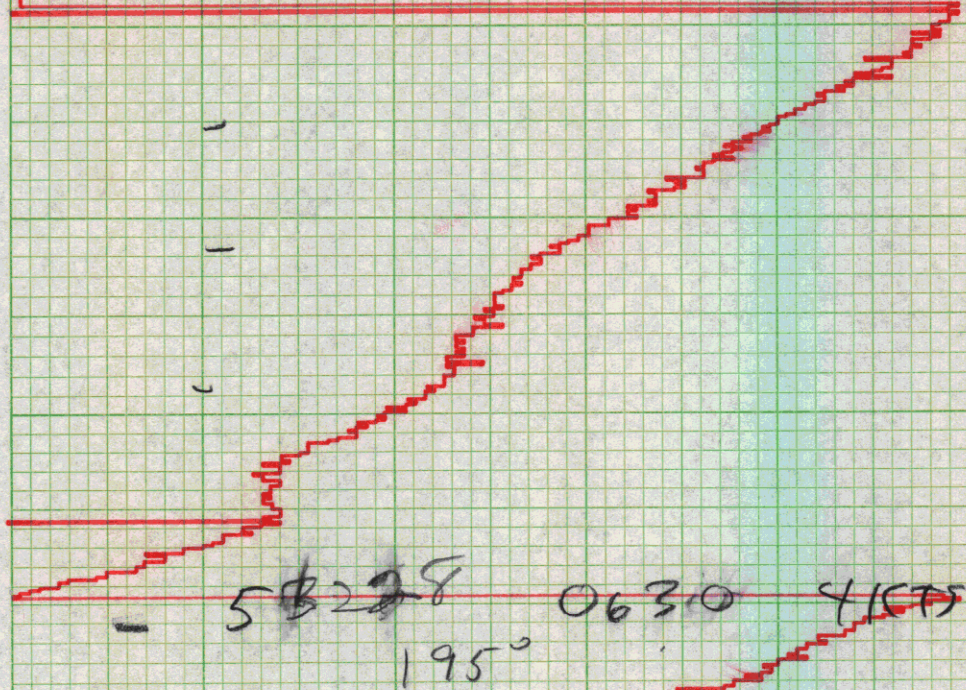
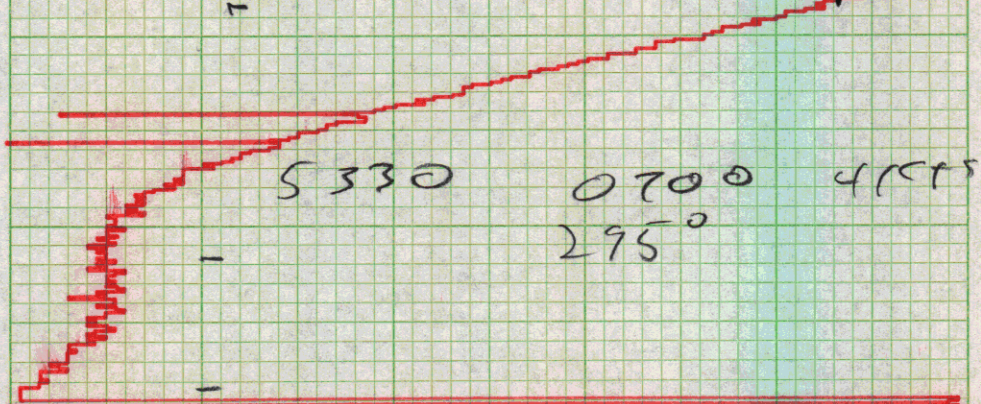


53108 0 600 295°  
7.5 KTS



53300 0 730 295°  
9 KTS







53319

0530

4KTS

1950

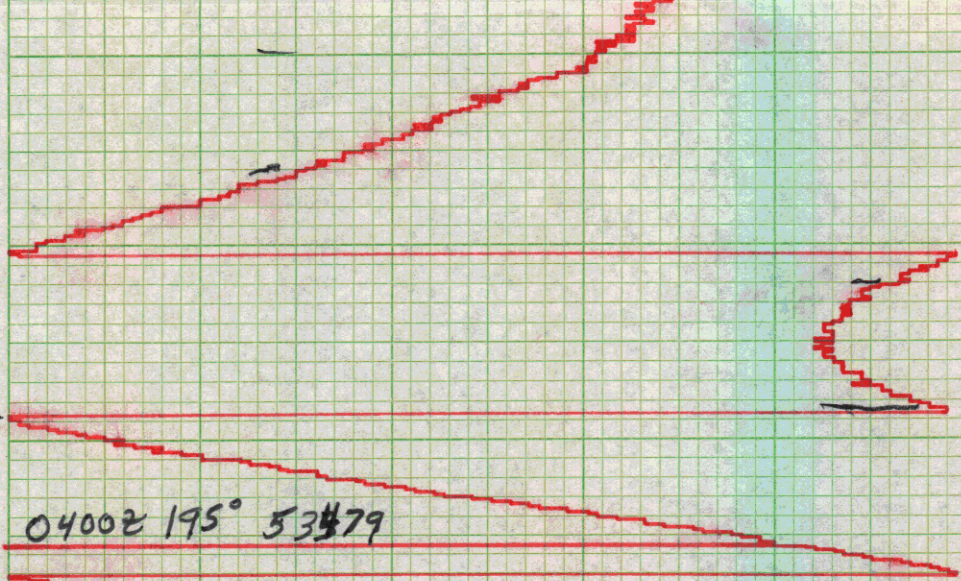
53232

0500Z-195-7

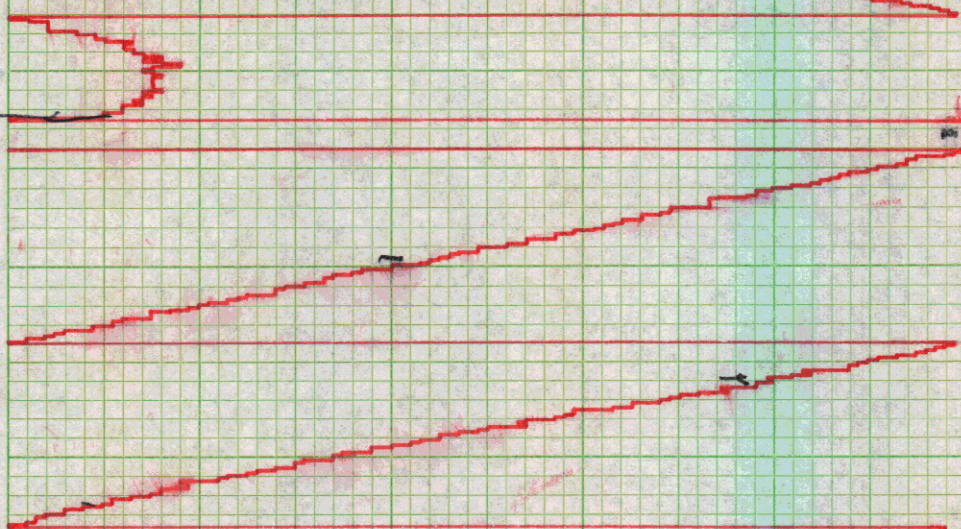
0430Z-195-7

53486

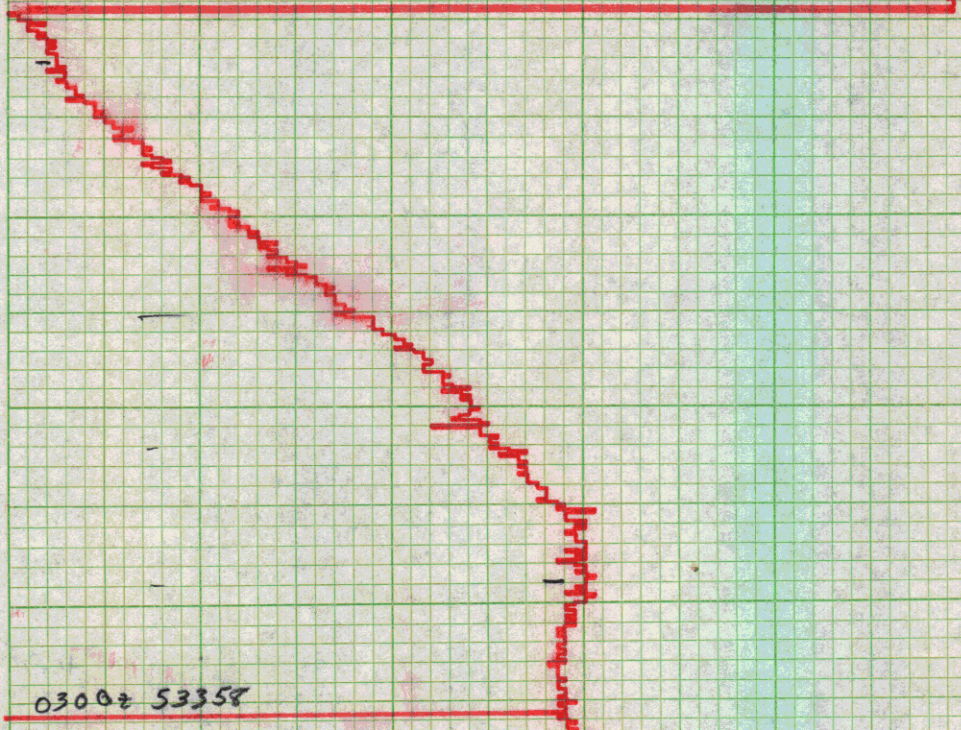
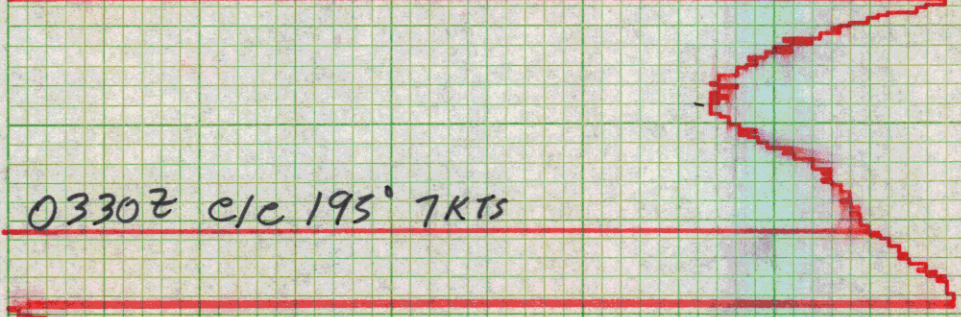




0400Z 195° 53479



0330Z c/c 195° 7KTS



0300Z 53358



0230  
220-7

53338

02002

53470



01352 53283 220° 7KTS

0100 195° 7K

53400

CR 220° 0043 GMT

0030 195° 7K

53407



0012 C/S 7.0K

0001 C/S 6K

0000 195° 5.2K

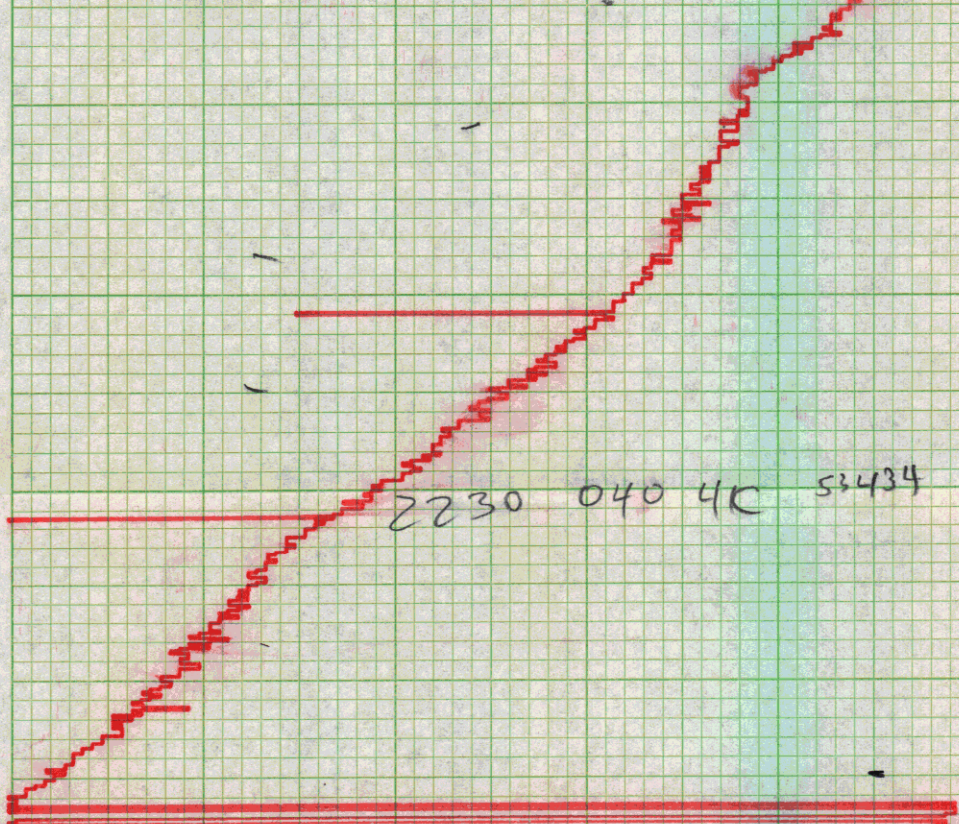
19 MAY 75

53461

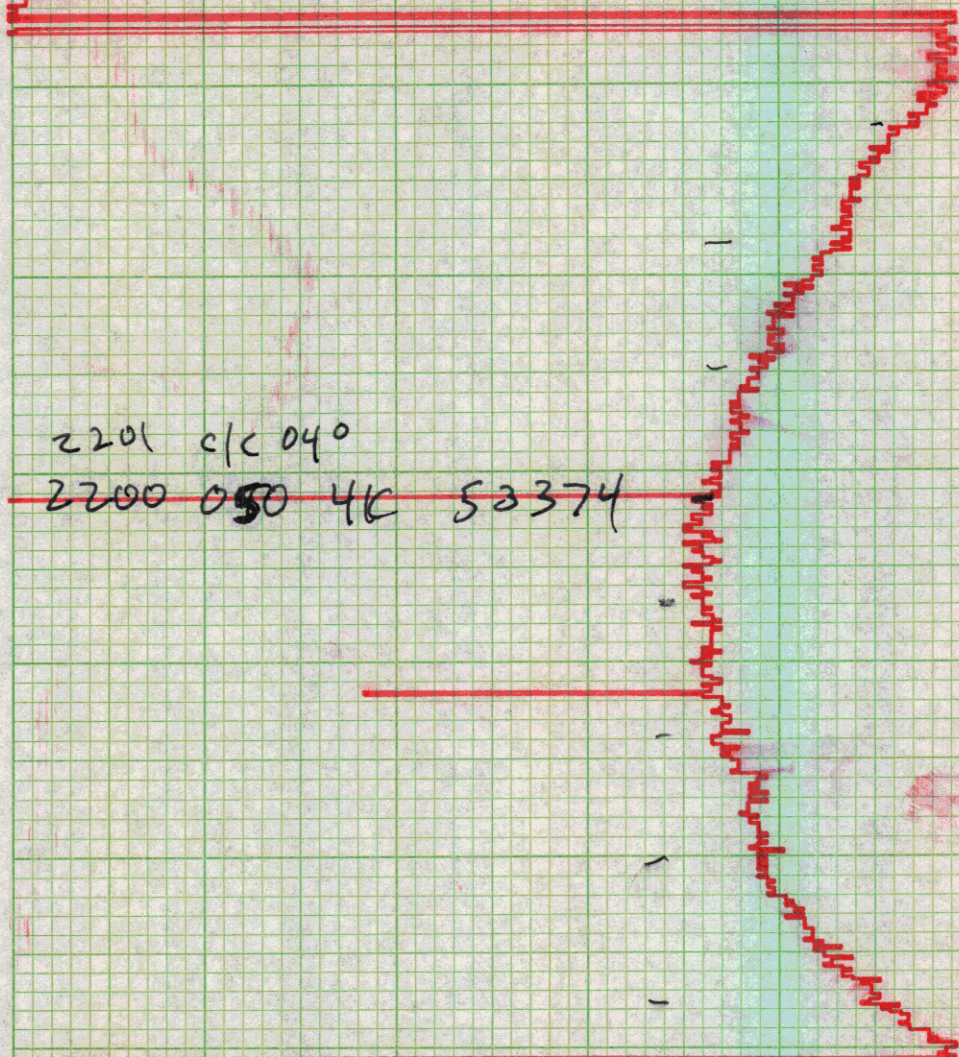
2330 195° 4K 53389

2300 2 4KT C/K 195°  
53495



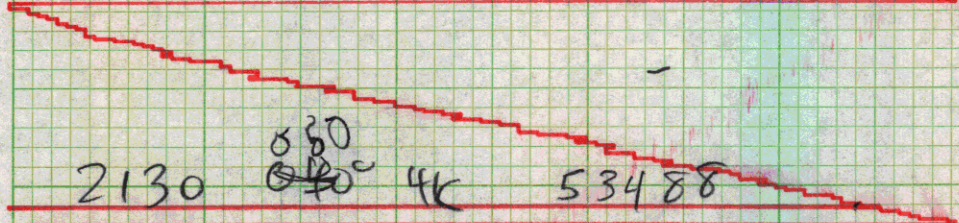


2230 040 4K 53434



2201 c/c 040

2200 050 4K 53374



2130 030 4K 53488



2100Z

060°

41KT

53773

53830

2030Z

060°

41KT



53790

2000Z

4 KTS

060°

1930Z

060°

4 KTS

1905 4K 060°

1900Z 055° 4KT

53654



1830 Z 055° 4KT  
53482

1800 Z 055° 4KT  
53560

1730Z 055° 4KT 53502



17002 53531

16538 055°

16302 53425

~~16002 53475~~ 4KTS 053°

< 1C 053°

18 MAY

16002 - 050 - 4 53295



0545 c/c 0500

18 may 52199 - 015302 043° 4kt

c/c 043° 1515Z

1500253486

1500Z - 53485



1430253329

18 MAY

1400 Z - 035°  
4 W 53297

1330 - 035° 4 W 53266



1300 035°

4K

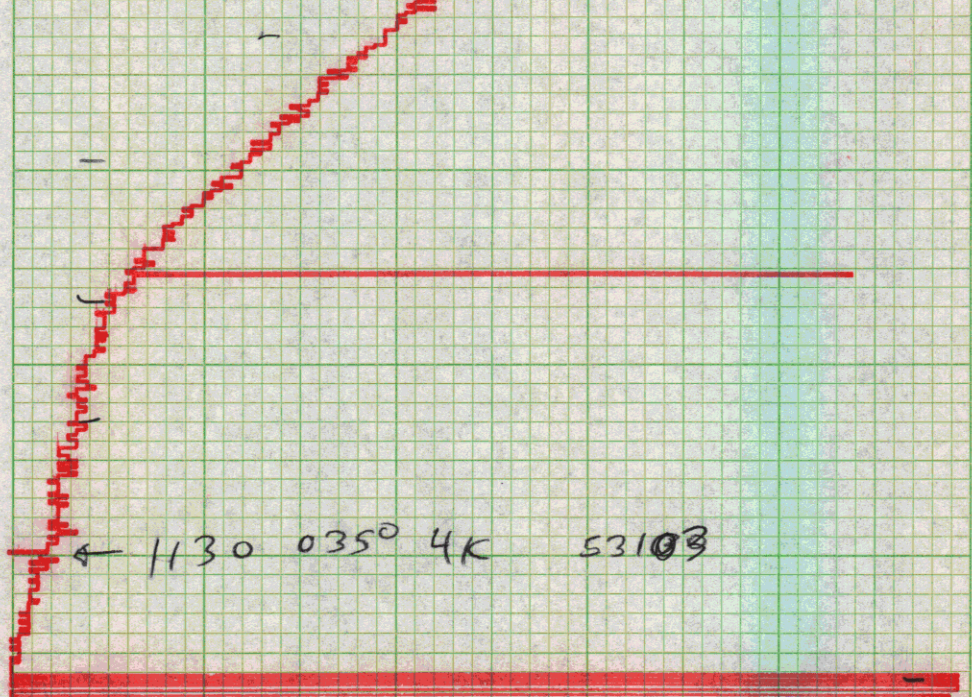
53245

1230 035° 4K 53193

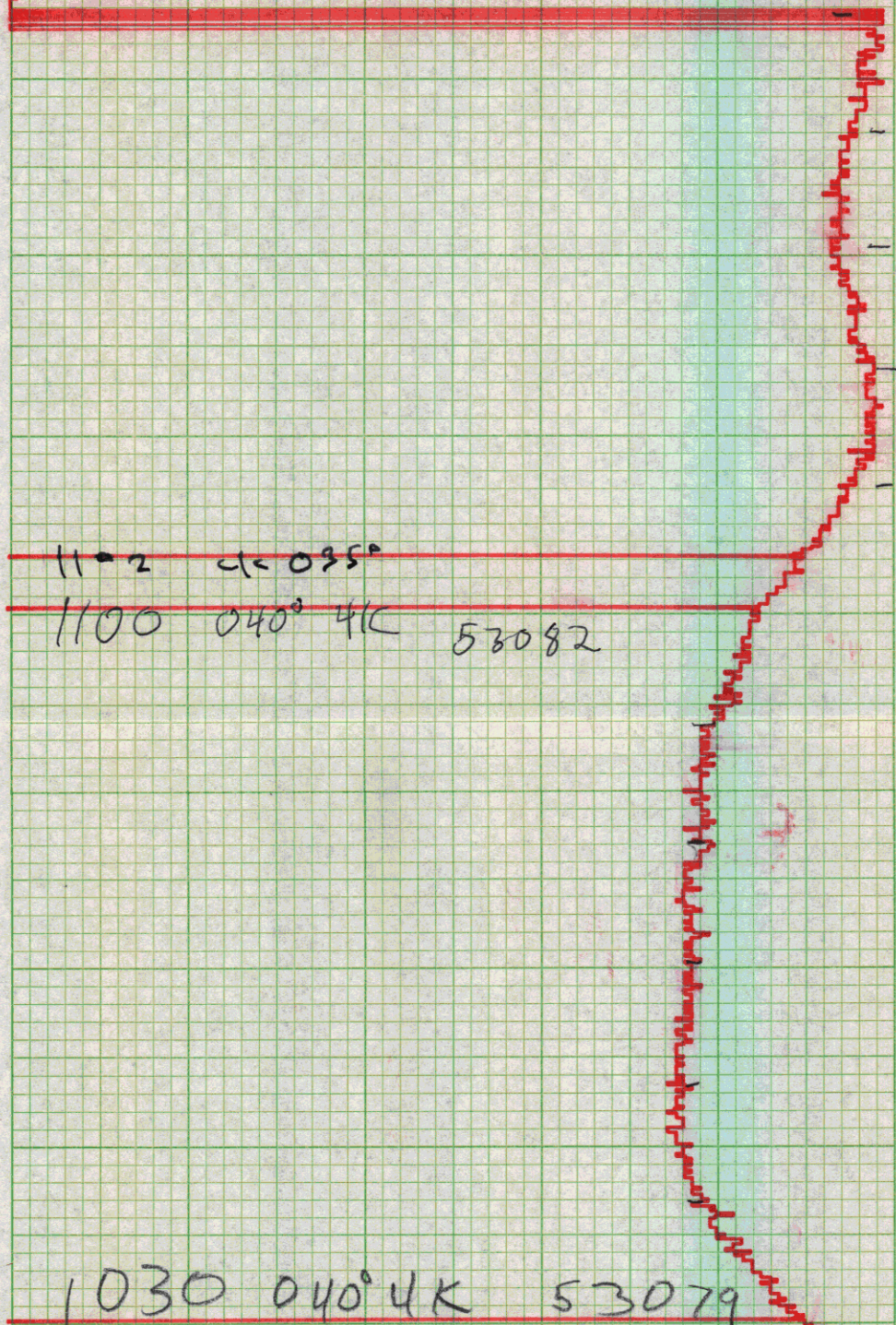
1200 035° 4K

53163





← 1130 035° 4K 53103



1102 035°

1100 040° 4K 53082

1030 040° 4K 53079



1000 18 MAY  
5-5250



0900 53518

040°

4 KTS

0830 53514

040°

4 KTS

0800 53536

040°

4 KTS



0730Z 040° 4KT 53567

0700Z C/L 090° 4KT 53300

0630Z 050° 4KT 53085



0600Z 050° 4KT  
53056

0530Z 050° 4KT 52976

0500Z -

52968



050 - 4

0430 Z

050 - 4

52988

< 050°

0400Z - 045 -  
18 MAY 4 kts

52979



0330 Z - 52954  
045 - 4

0300 Z 045 - 4 52932

c/c 045°

0230 Z - 050 - 4 52900

c/c 050°



0200 055° 4kts 52870

01302 4kts  
52843  
0128 C/E 055°

0100 040° 4k 52817



0044 c/c 040°

0030 0350 52782  
17 MAY

2400 52758

16 MAY 0350



23 30 0350

4K

52743

2300

035

4K

52738

2230

035

4K

52725



2200 035° 4K

52719

2130 035 4K

52712

52722 2100Z 4KTS  
035°



c/c 035°

52758

2030Z

4 KTS  
050°

2000 Z

050° 4 KTS  
52756

c/c 050°

1930 Z

055° 4 KTS  
52787



19002

055° 4KT 52817

18302

055° 4KT 52813



1800 Z 055° 4KT 52735

1730 Z 055° 4KT 52719

52770 1700 055° 4 KTS



52809 055° 4KTS 17 MAY 75

1600 Z

52823

1530 Z

055-

52656



1500 - 055 - 4

52660

1430 055 C-4

52651

c/e 055

S-4

527

1400



1330Z - 052-4 52781

52823 4KTS 1300Z

1230 0520 HK

52848



1216 4C 052°

1200 020 4K 52838

1130 020 4K

52759

ON 1128



1100 020° 4K 52686

1030 020° 4K 52639



1000 52604 020° 16 MAY

0950 1W 1W →

0930 020 4K

INK OUT  
0931

52552

0900 020 4KTS 52535



0830Z

020°

4KT

52576

0800Z

020°

4KTS

52612

0730Z

020°

4kt

52576



0700Z 020° 4KT  
52574

0630Z 020° 4KT 52592



0600Z 020° 4KT  
52536

0530Z 52465 020° 4KT

0500Z 52426 025°



2/c 020<sup>d</sup>

0430Z 025° 52396



0400Z 025° 52352

52294-0330-  
035°-4

0300-035°-4kts

52258

0700  
0750-0750



CIC 035

0230Z

52226

0200Z - C-025 52190  
S-4

0135 - CIC 025

0130Z

017'

52148

17 MAY

4 kts



0100 017° 4K 52109

0030 017 4K

52059



17 MAY 75

0000 017° 4K 52020

2349 c/c 017

2330 012 4K 51991

2300 012° 4K

51944



2230 012° 4K

51875

2200

012°

4K

51848

2130 012° 4K 51783



2100 012° 4Kf 51771

2030 012° 4K

51712

2000 z 012° 4Kf



1945 c/c 0120

1930  $\approx$  015°  
4kt 51746

1915 c/c 015°

020° - 4 -  
51774 1900  $\approx$  4 KTS

1945 c/c 0120

1930  $\approx$  015°  
4kt 51746

1915 c/c 015°

020° - 4 -  
51774 1900  $\approx$

4 KTS

1945 c/c 0120

1930  $\approx$  015°  
4kt 51746

1915 c/c 015°

020° - 4 -  
51774 1900  $\approx$

4 KTS

1945 c/c 0120

1930  $\approx$  015°  
4kt 51746

1915 c/c 015°

020° - 4 -  
51774 1900  $\approx$

4 KTS

1945 c/c 0120

1930  $\approx$  015°  
4kt 51746

1915 c/c 015°

020° - 4 -  
51774 1900  $\approx$

4 KTS

1945 c/c 0120

1930  $\approx$  015°  
4kt 51746

1915 c/c 015°

020° - 4 -  
51774 1900  $\approx$

4 KTS

[illegible]



51752

020°

18302

4 KTS

51800

020°

18002

4 KTS

C/C 020°

51960

027°

17302

4 KTS



1700Z-027° C-4

52140

1630 027° 4K 52130

1600 027° 4K 52134

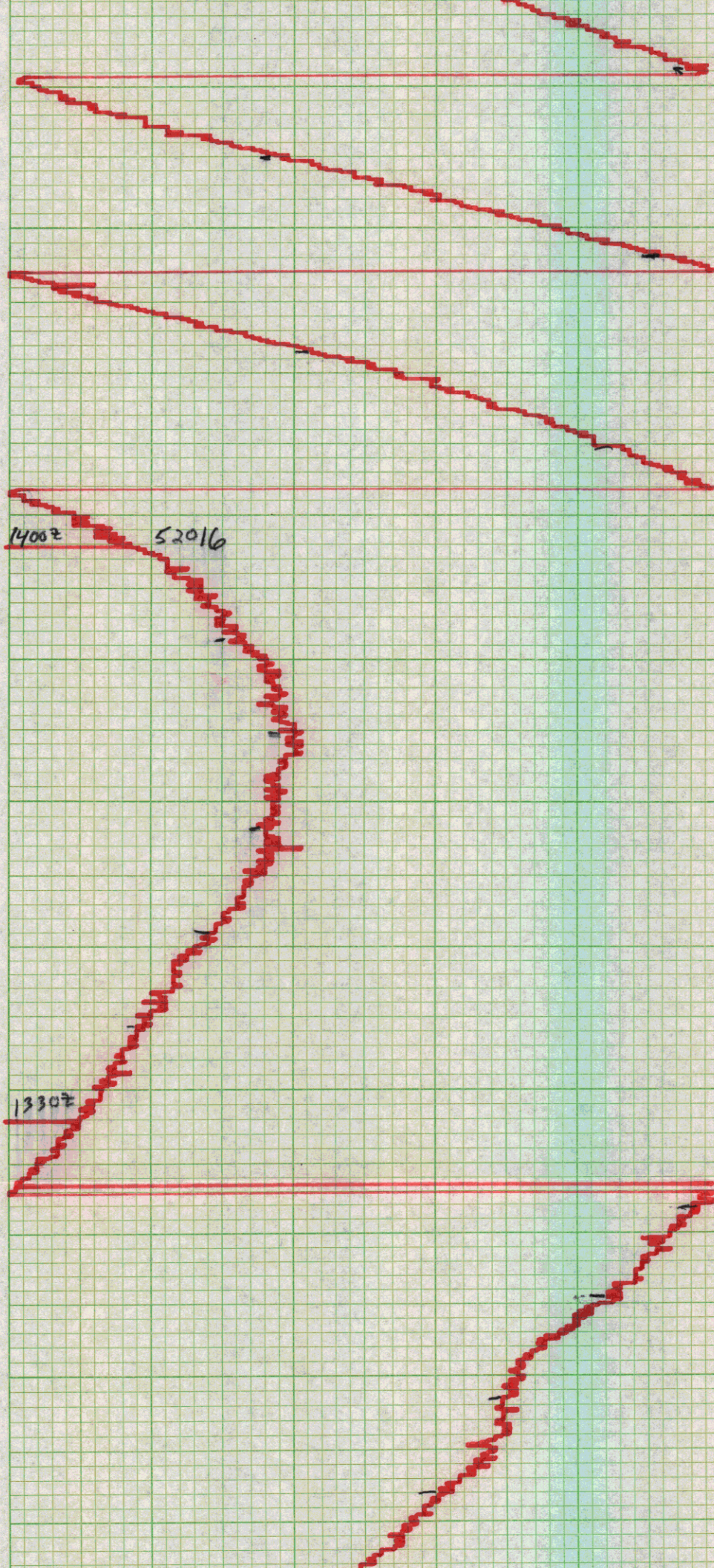


1530Z 52054 027° 4KTS

1500Z 027° 61839

1430Z 51758







13002 51930 355°

1230

51889

1200

52124



1130 350° 4kts 52180

1100

52166

16 MAY 75

1030



1014 clc 314

1000 340 410fs 52097

0930 340 410fs

52054

0920 clc 340°

0900Z 345° 4.0K+







0730Z 4.0KT 350°  
51766

51758 350° 4.0 KTS  
0700Z

51694 357° 4.5 KTS  
0630Z



C/C 350° @ 0605Z

51628  
0600Z

357°

4.5 KTS

0530

51602

357°

4.5 KTS

0500

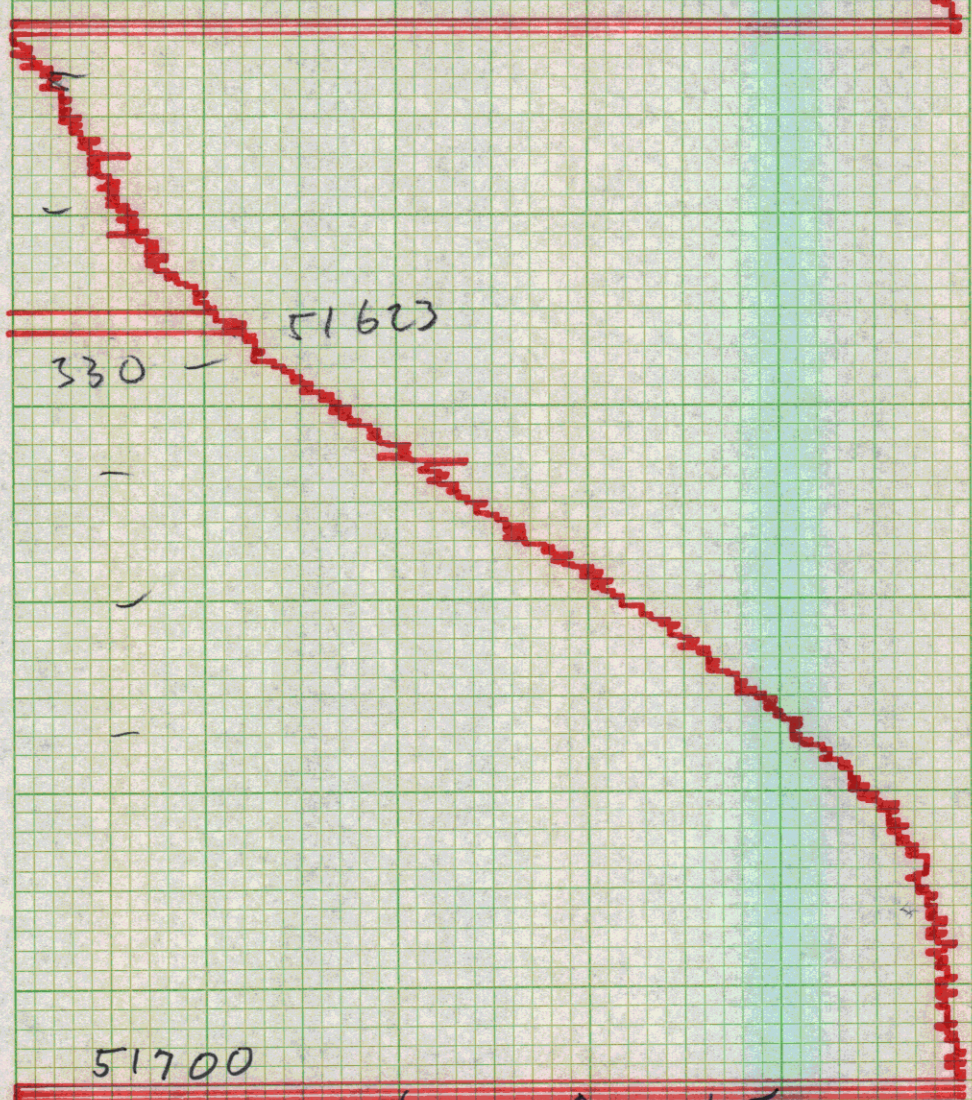
51590

357°

4.5 KTS



0405 c/c 357



330

51700

0400 c/c 000° S-45

16 MAY 75 - 0330



03002

51715

0230

51731



0200z 000° 51712

0130z 000° 4.3KTS 51648

0100 ~~000°~~ 51572 000° CK 000°

CALIBRE ↑



C/c 200°

0030 51645

C/c 250°

C/c 270°  
0007

10 MAY

0000 51647hr  
215° 15 MAY

2330 1280  
51699°  
5.0 kts



2300 slow turn  
to 215°

51761

2218 45 4°K

2200 125° 3K

51767



51767g

on 2150 15 MAY 75

putting streamer in water

off 1030 15 MAY 75

1021  
S/S 3005

1000 2450  
51015 15 MAY



930 9.6 KTS

295° 51047

50724

0900 Z

295°

9.5 KNOTS

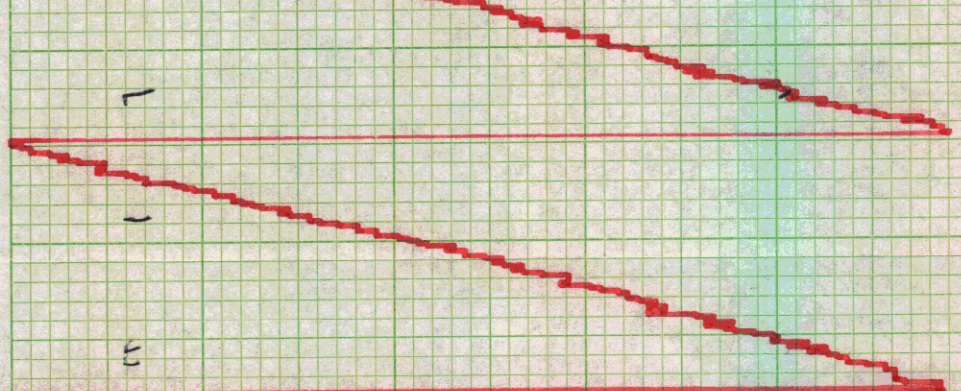
0830 Z

50886

295°

9.5 KTS





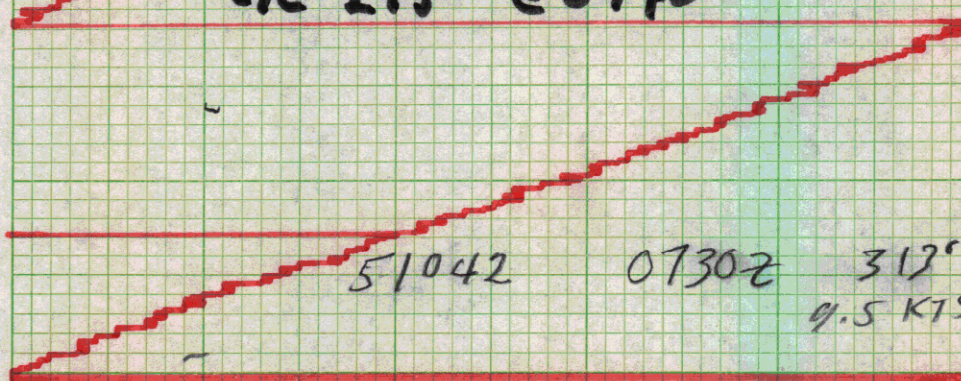
51118

0800Z

295°

9.5 KTS

c/c 295° 00740

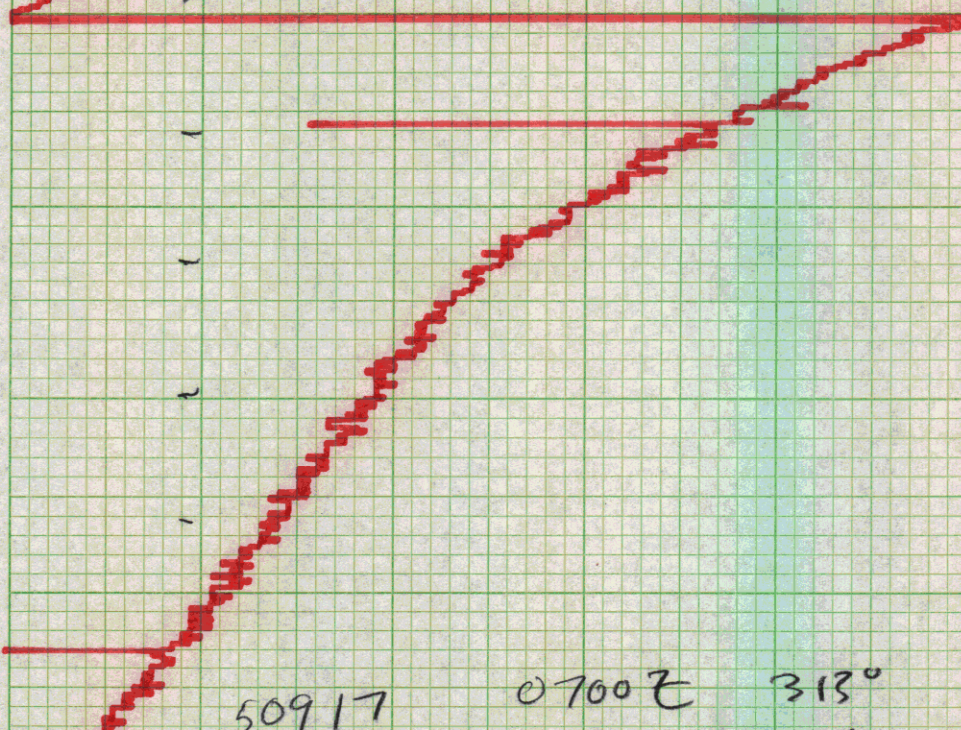


51042

0730Z

313°

9.5 KTS



50917

0700Z

313°



9.5 KTS

0630 Z 313° 50873 9.5 KTS

0600 Z 313° 50874 9.5 KTS



0530Z 313° 50668 9.5KTS

0500Z 313° 50576 9.5KTS

0430 4C 313° S- 9KTS +  
50448



15 MAY

0400Z - 50415

355°  
9.5 kts +

0330 - C 355° - S 9.5 kts +

50270

15 MAY

0300Z 50175

355° S-9.5 (14)



0230Z 355° 50126

-25

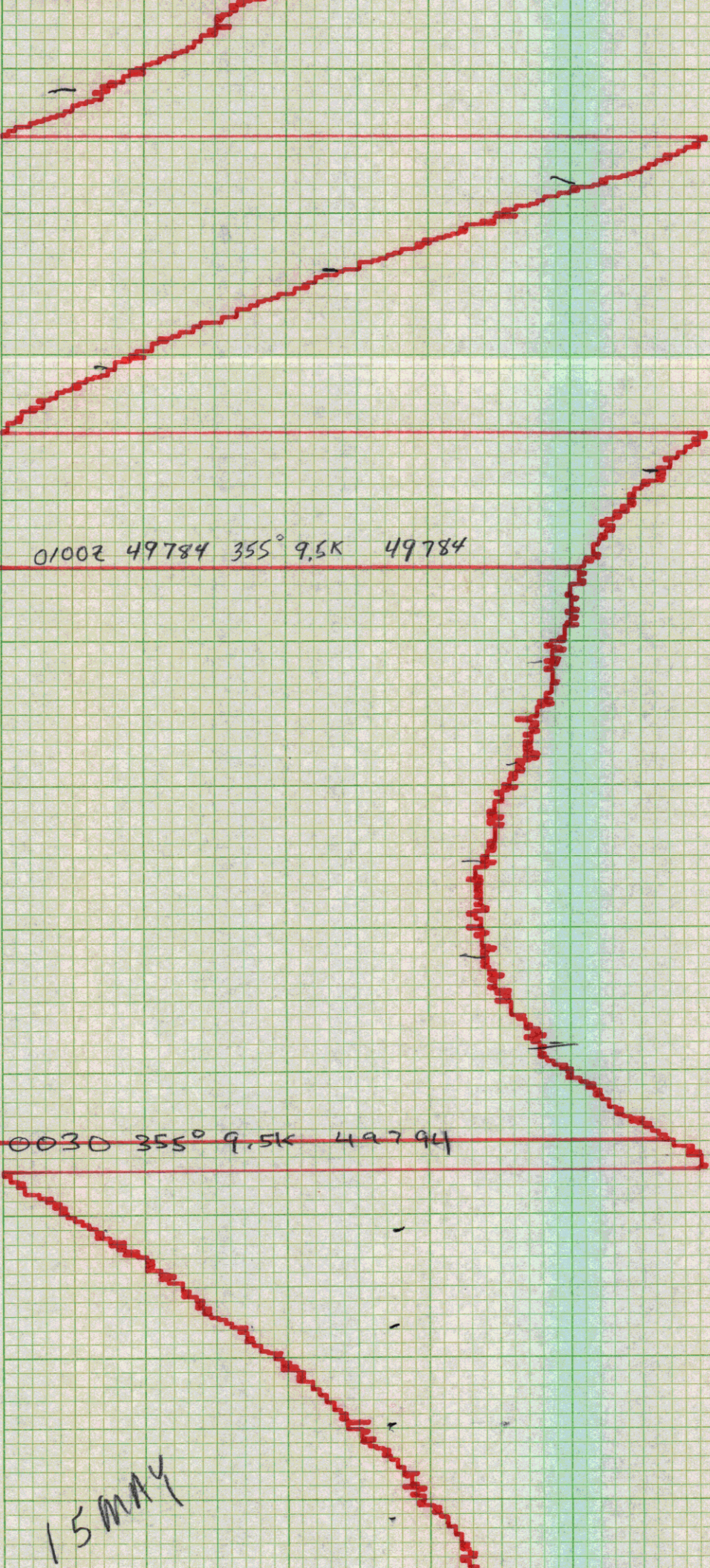
0200 - 50055

C-9.5+ 355°  
(14)

0130Z 355° 9.5K12



01002 49784 355° 9.5K 49784



0030 355° 9.5K 49794

15 MAY



0000 355° 9.5K 49875 15 MAY 75

2330 355° 9.5K 49883

2316 c/c 355°

2300 9.3Kts  
49886



2230 000° 9.5K 49613

2200 000° 9.5K 49391

2135

49452

2135 14 MAY 1975



IG 15-1

Roll #3

Begin



