

END ROLL 2

MAGGIE

IG-15-1 14 MAY 75

≈ 2130

2120 0000 9.50 11/11/7

2130 100 15K 49401

49492

2100 Z

000°

9.5 KTS

2030 Z

000°

9.5 KTS

49382

2000 Z

000°

9.5 KTS

49240

1930Z

000°

9.5 KTS

492 37

1900Z

000°

9.5 KTS

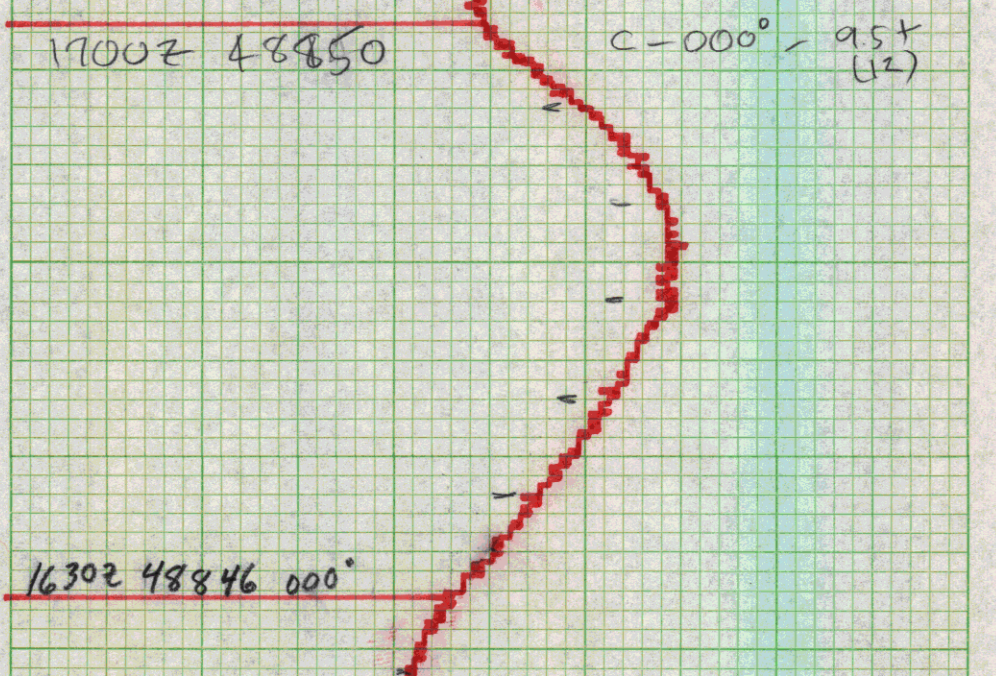
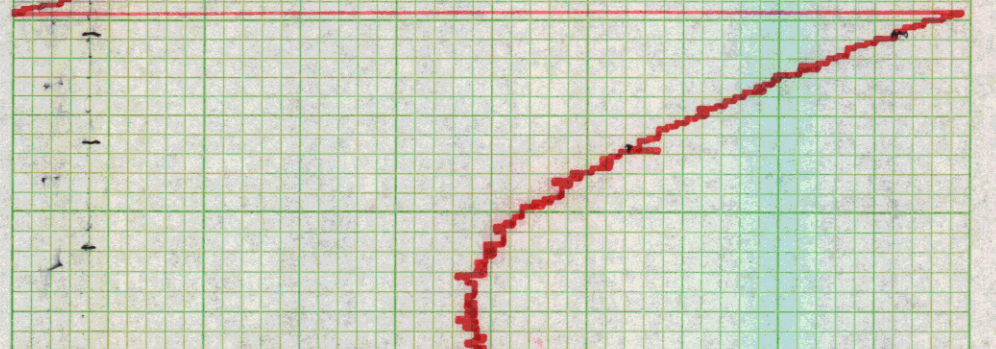
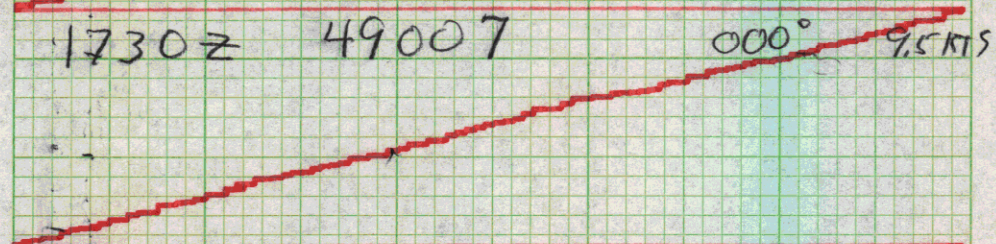
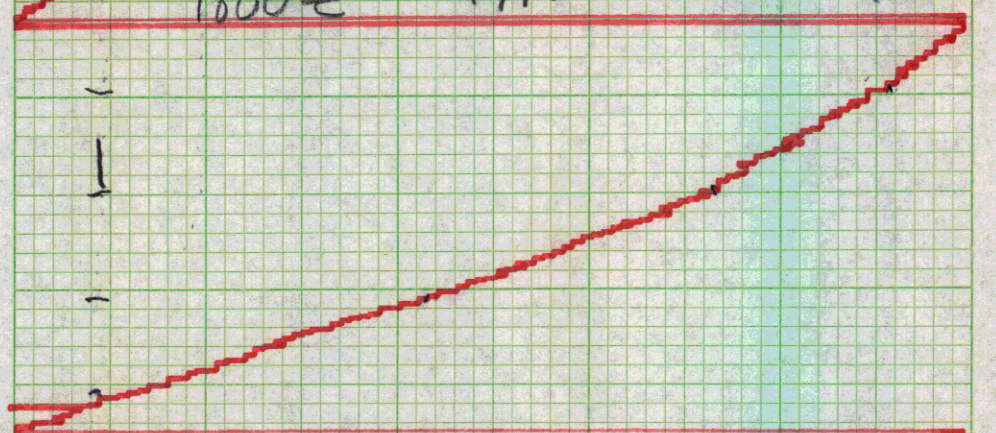
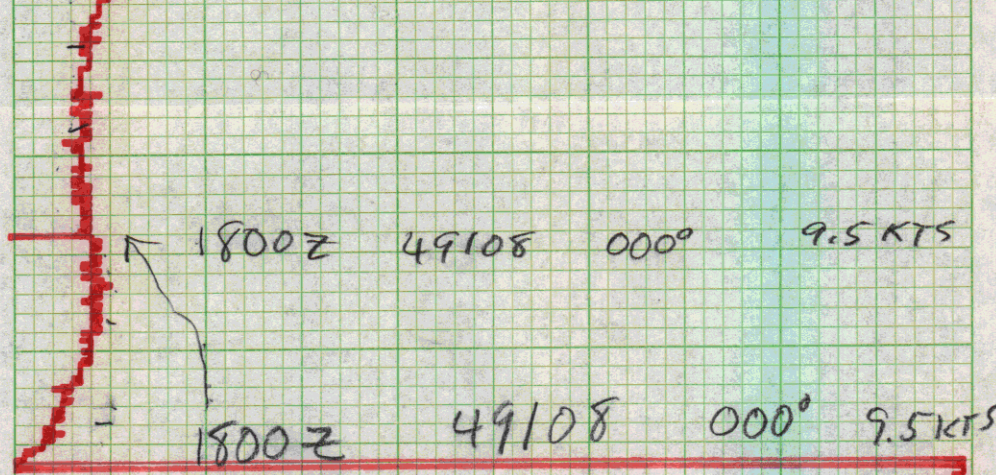
49240

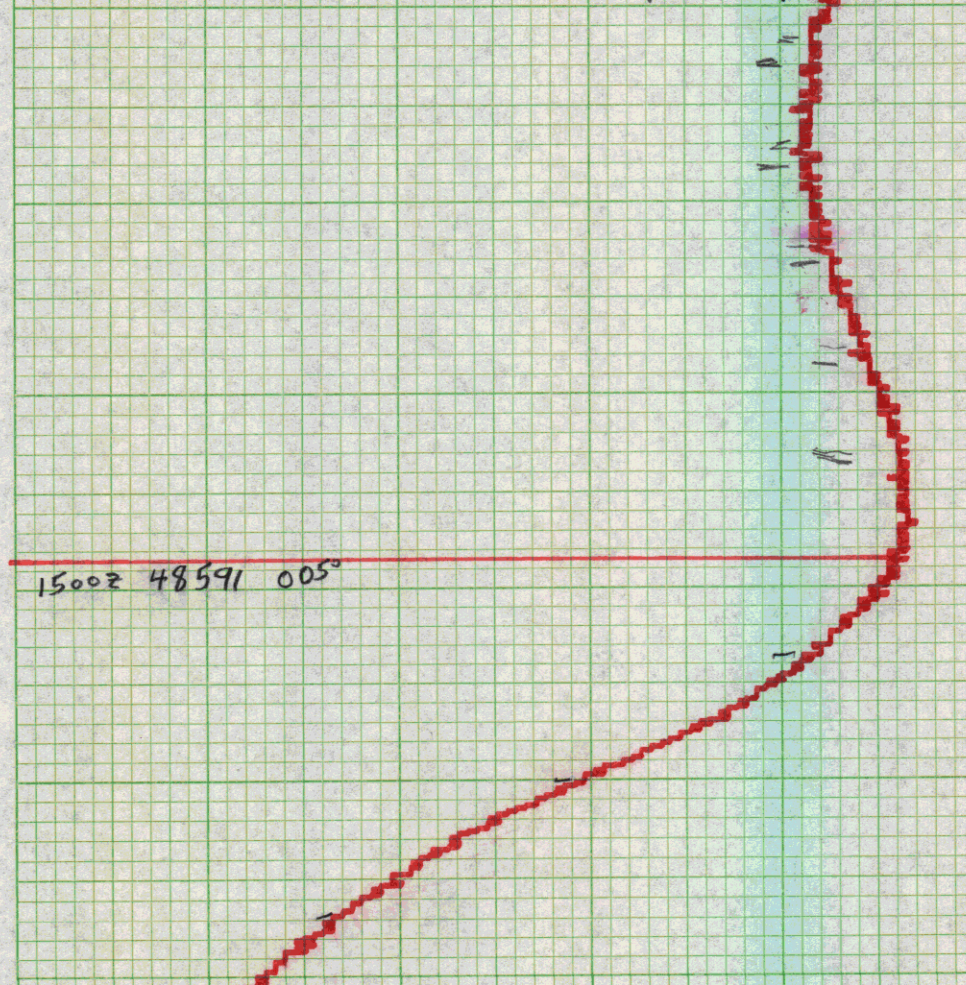
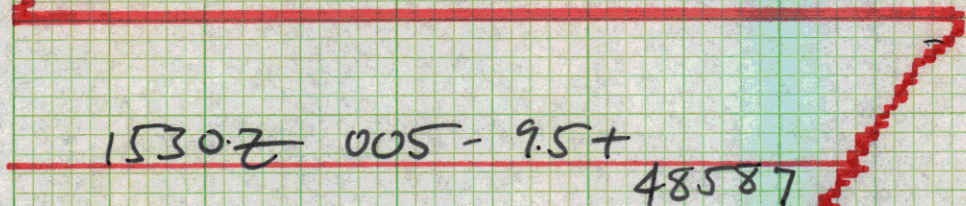
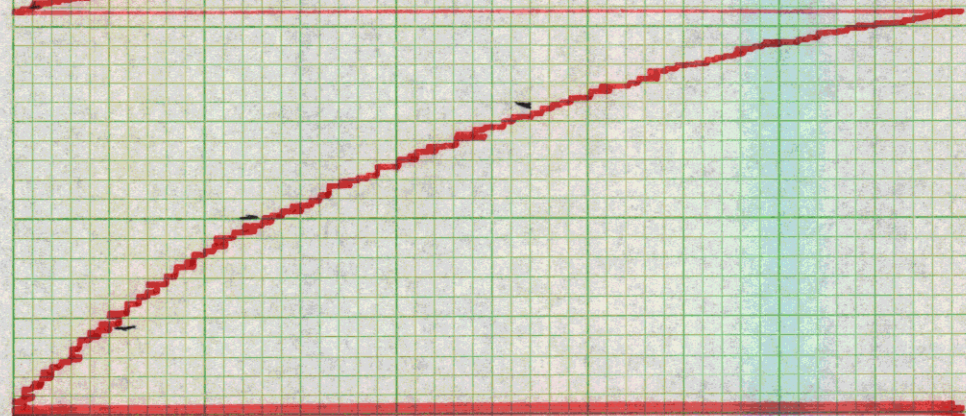
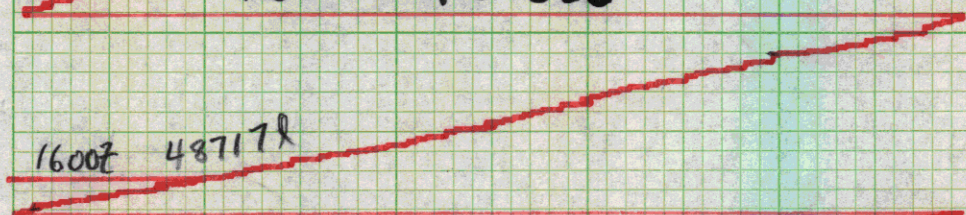
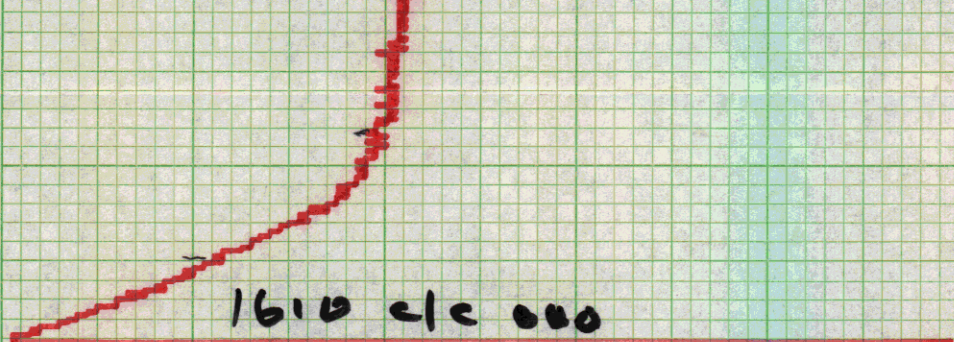
1930Z

49143

000°

9.5 KTS





14302 48517

e/c 005°
14202

1400 48304

C-013 48189 1330
S-9.5

1400 013° 7.5K

48167

1230 013° 48083g

1200 480128

013°

14 MAY

1130 48000 c/c 040

1100 7.5 kts
020°
417950

1030 7.5 kts
020°
417940

1000 6 KTS 020°
47956

930 1.5 KTS
020°
48024

C/C 020°

48000 - 0900 - 060° - 9.5 KTS

47929 - 0830 - 060°

9.5 KTS

47850

0800

060°

9.5 KTS

47788

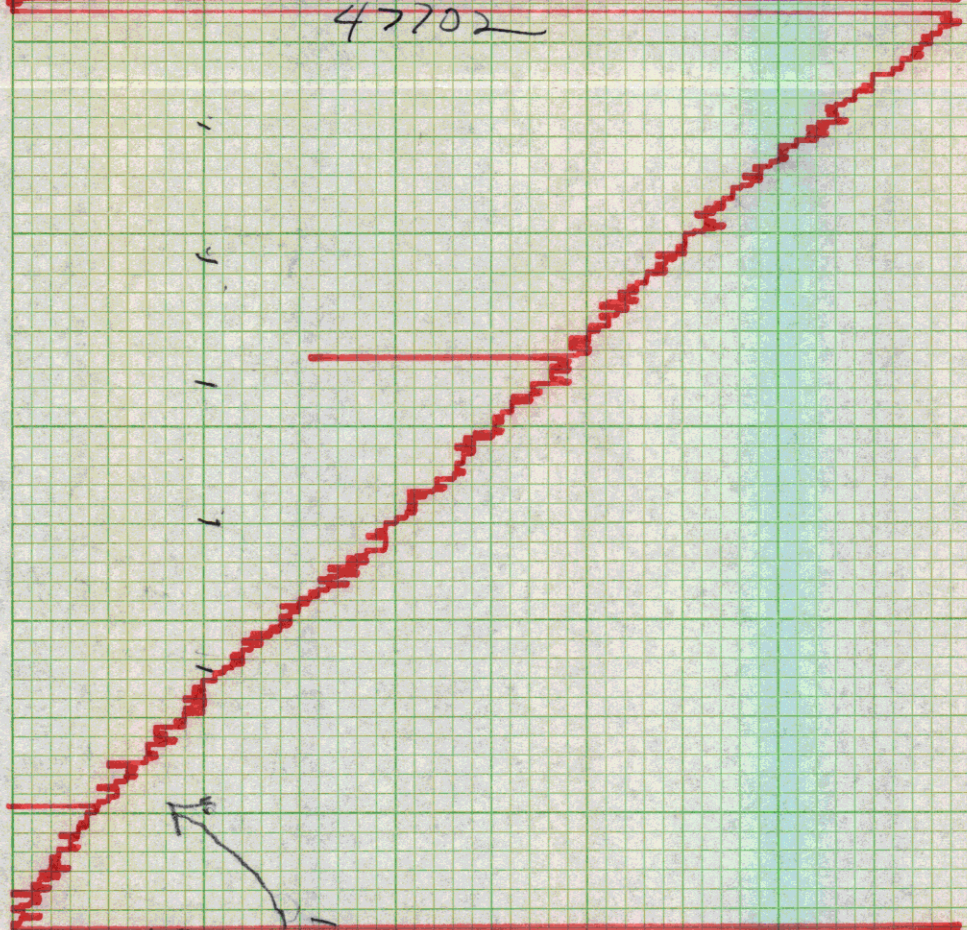
0730

060°

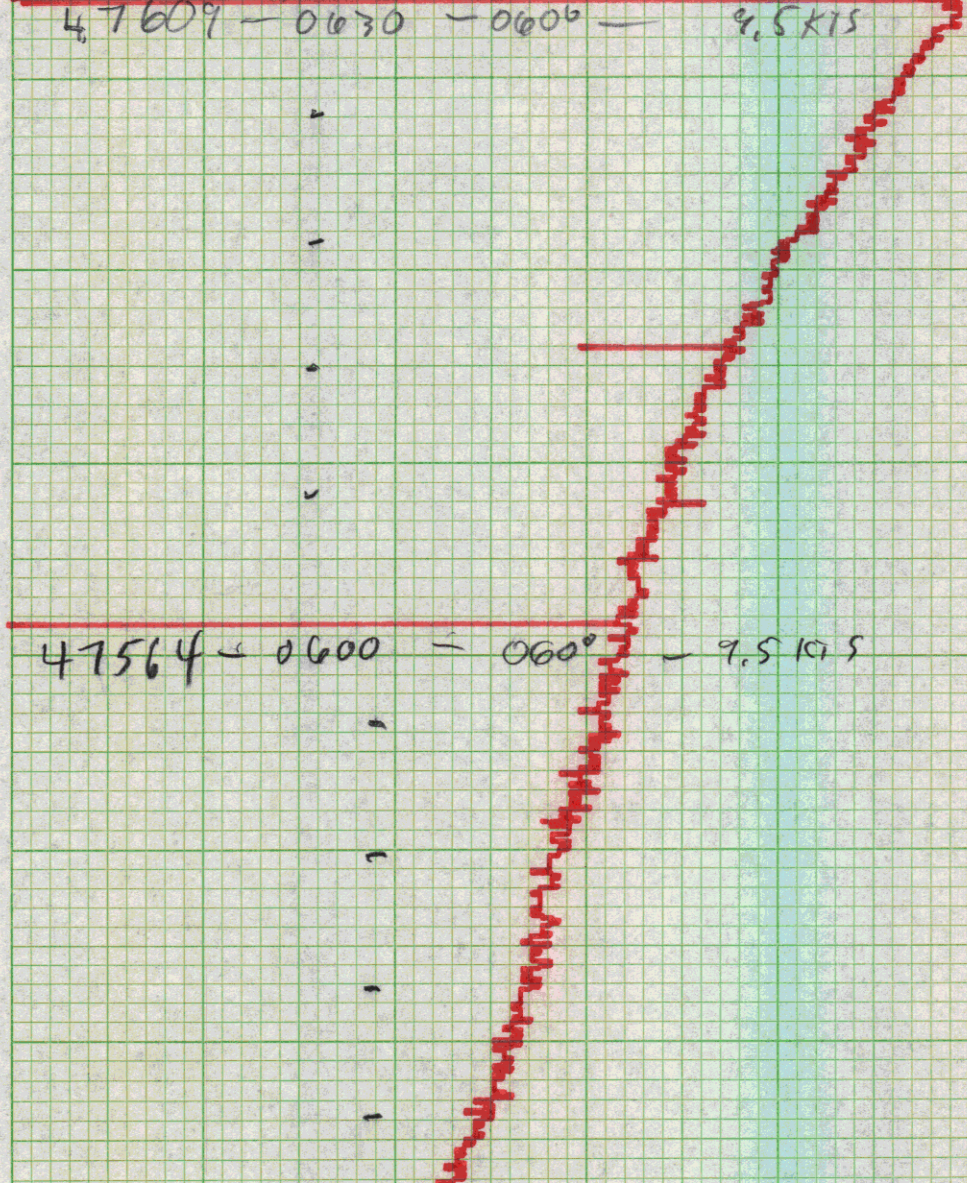
9.5 KTS

0700 060° 9.5 KTS

47702



47609 - 0030 - 0000 - 9.5 KIS



47564 - 0000 - 0000 - 9.5 KIS

47538 - 0530 - 060 - 9.5 KT

47509 - 0500 - 060 - 9.5 KT

0430 - 066 - 9.5 +

47456

0400Z 9.5+ KTS 47420

Adjusting scale

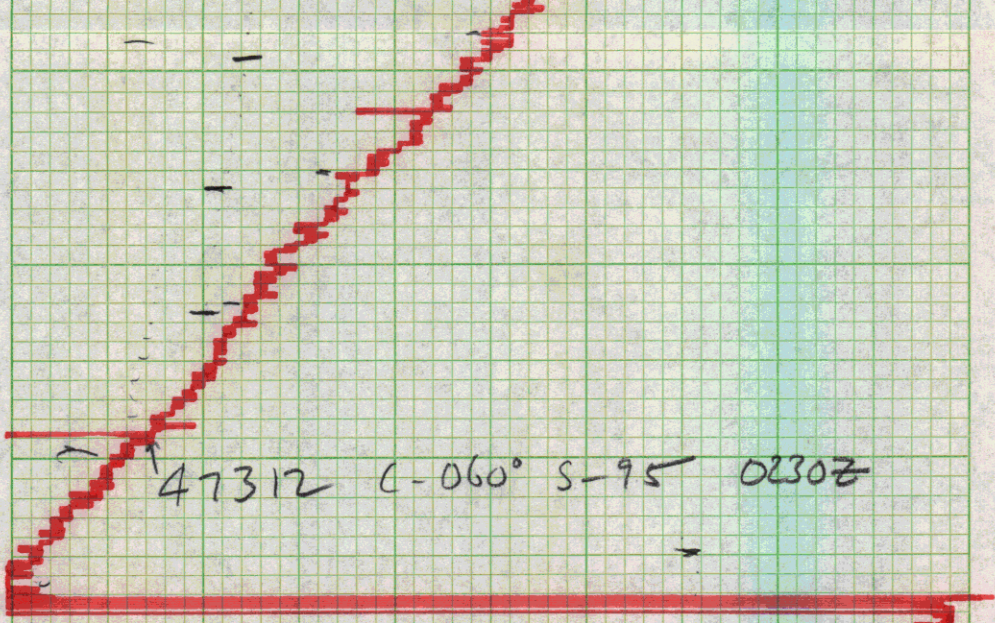
0330Z 060° - 9.5+

47376

0300Z - C - 060

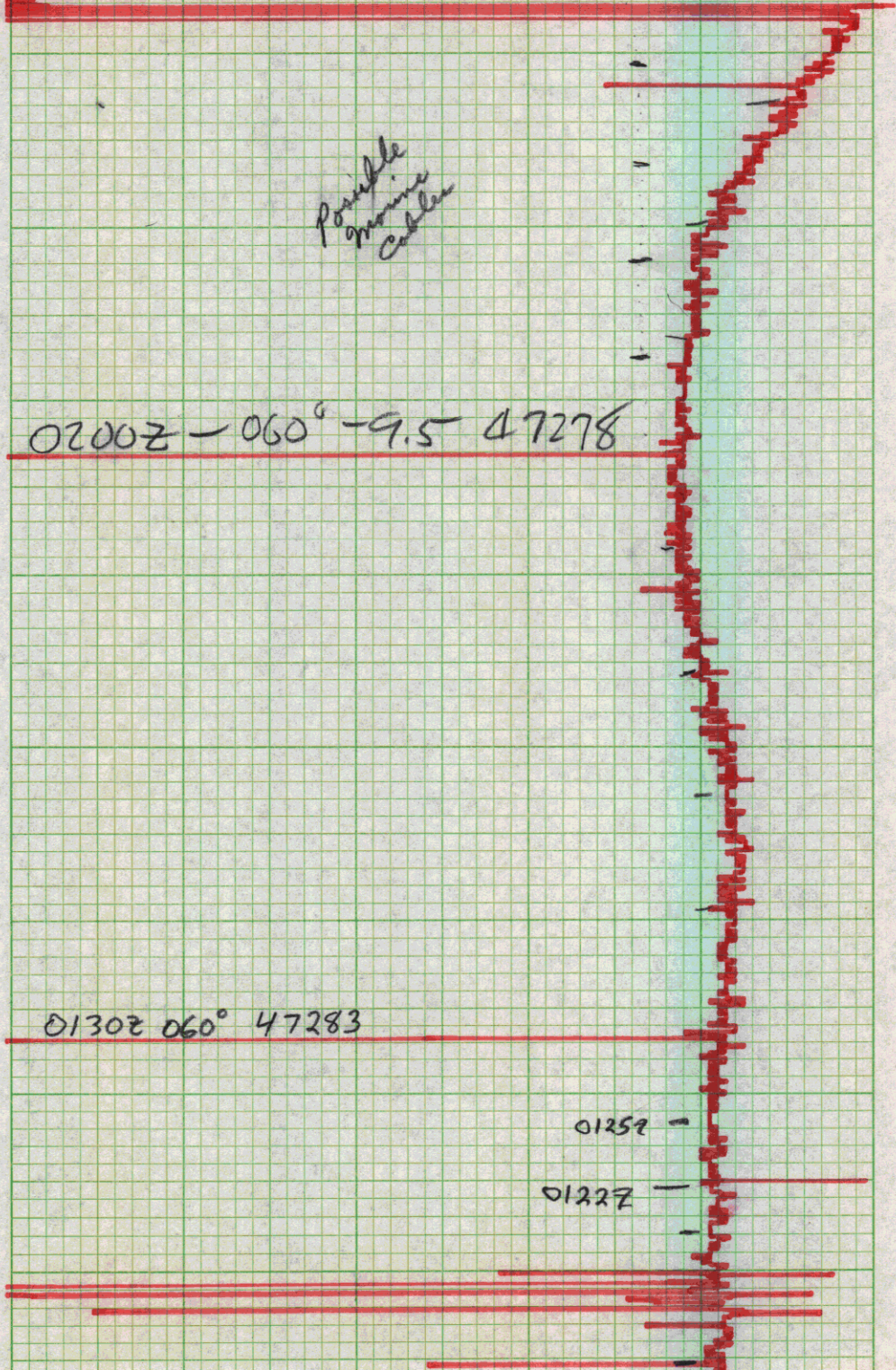
S - 9.5+

47356



47312 C-060° S-95 0230Z

Possible
mine
cable



0200Z - 060° - 9.5 47278

0130Z 060° 47283

01259

01227

adj. channel

0030 9.5 Kts
15 min 7252

0021 060 4.5 9.5K

2700 42258 6. Kts 060°

2530 0415

060° 47240

2300Z - 47218 060-6

2200 060°

47195 & 6 KTS

2200 060 47186

2150 47200 0 kts 060°

47226

2100

65 KTS

060°

47271

2030

65 KTS

060°

2000 47300

65 KTS

060°

47314

1930

6.5 KTS
060°

47295

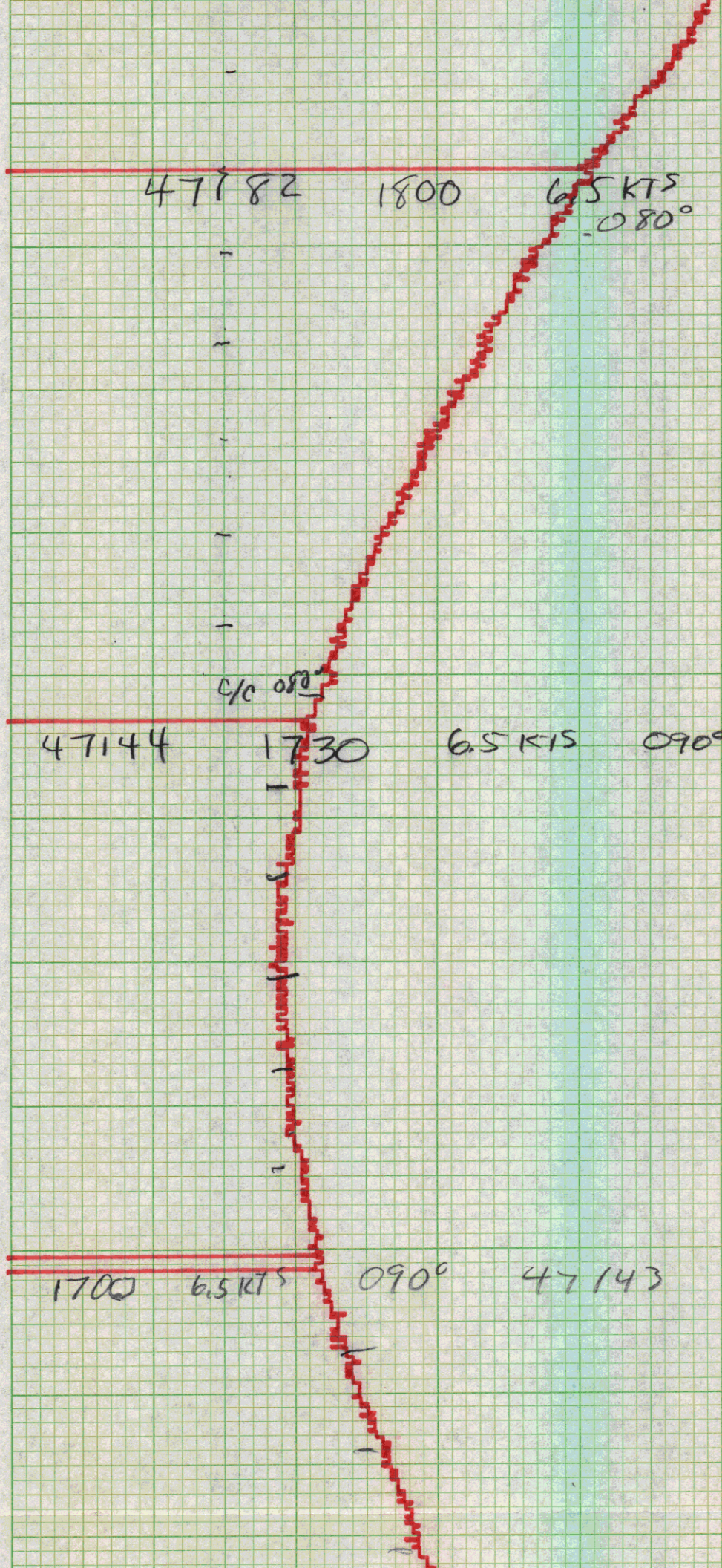
1900

6.5 KTS
060°

47241

1830

6.5 KTS
G/C 060°



1630 6.5kts 090°

47175

1600Z 6.5KTS 090° 47192

1530Z 6.5KTS 090° 47178

C/S 6.5 kts, C-090°
1500

47164

C/S 7.5 kts 1442

1430 090° - C/S 3.0 kts
fix 5005

47170

2AL

1400Z 090 - 7.5 47197

1330Z 090° 7.5 KTS

47347

1315 090°

1300 7.5 KTS
47348

1250

47461

7.5 KTS

13mly

085

1200 085° 7.5 kts

47472

ck 085 1142

1150 8.0 kts 47402 ✓

150 3.0 kts 47404 ✓

1100 1042 1030 1000

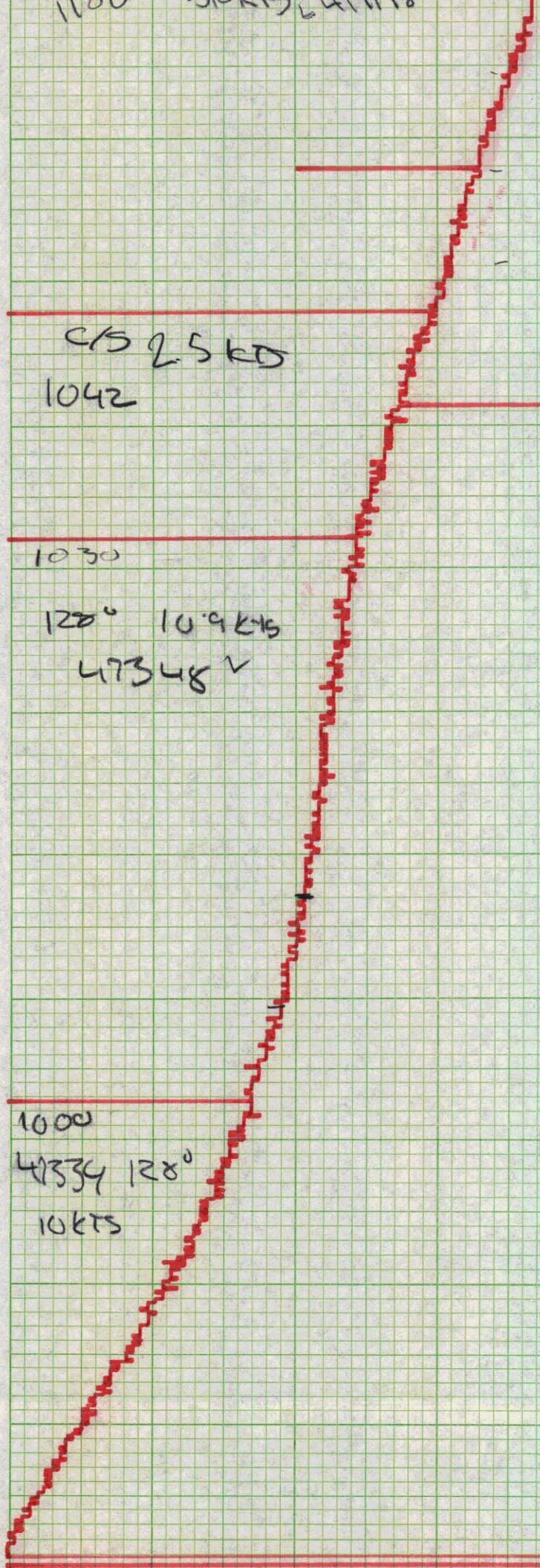
C/S 2.5 KD
1042

1030

128° 10.9 KTS
47348 V

1000

47334 128°
10 KTS



472928 128° 9 KTS

0900 47291 128° 9+KT

0844
C/C 128°

~~47308~~ 0830 135° 9 KTS
47308

47494 0800 135° 9 Kts

0730 c/c 135° 9 Kts
47569

0700 4 47624 145° 9 Kts

0630 47690 145° 9KTS

47704 0600 145° 9K+

47751 1530Z 91KTS 145°

47882

1500Z

9 KTS

145°

1430Z

47969

C-145°

S-9 kts +

48005 - 0400 C-145°
S-9+kts

0330-C145
S9+

48049

0300Z 9+kts 145° 48104

0230Z 145° 9KTS 48129

0220 c/c 145°

0200Z 48183
C-140° S-9KTS+

0130 140° 9.+ 48206

B- 0115 - c/c 140°

0100 10 KTS 135°
48244

0030 10 KTS 48199

1350

4820S 2400 hrs 10 KTS
135°

2330

10.1KB

1350

48245

2300E 10kt 135° 48288

2230

10 KTS

48322

135°

12 MAY

2200

10 KTS

1350

48350

12 MAY

2130

9.6 KTS

48398

1350

48423

2100

5 K75

130°

48469

2030

8 KTS

135°

48516

2000

8 KTS

135°

48578

1930

8 KTS

135°

48635

1900

8 KTS

135°

48679

1830

135°

8 KTS

1800

135°

8 KTS

48711

1730

135°

8 kts

48744

1700

135°

8 kts

48790

48832

C/C 135°

S-9 kts

1630 Z

1600Z 125° 9.0KTS 48868

1530- 125° 9.kts 48908

1500Z 125° 9.0KTS

48949

1430 125° 9.0 48985

14008

125° 9.0 KTS 49020

13302 125° 9.0 KTS 49040

1300 - 125° 90 kts 49081

1230
49128 Y

1250
12 MAY 91 KTS

1200 91 KTS

1250

49172

1150

49208

9.1 KTS

125°

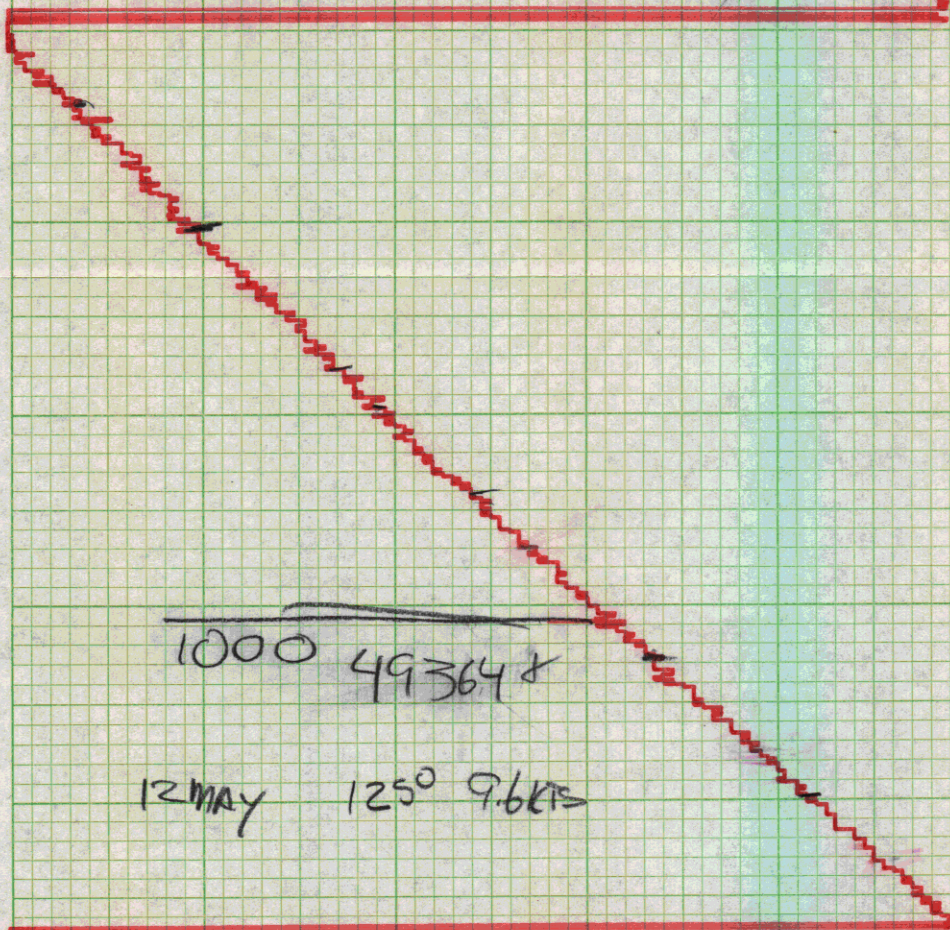
1100

49240 RSG
9.6 KTS

1030 9.6 KTS 125°

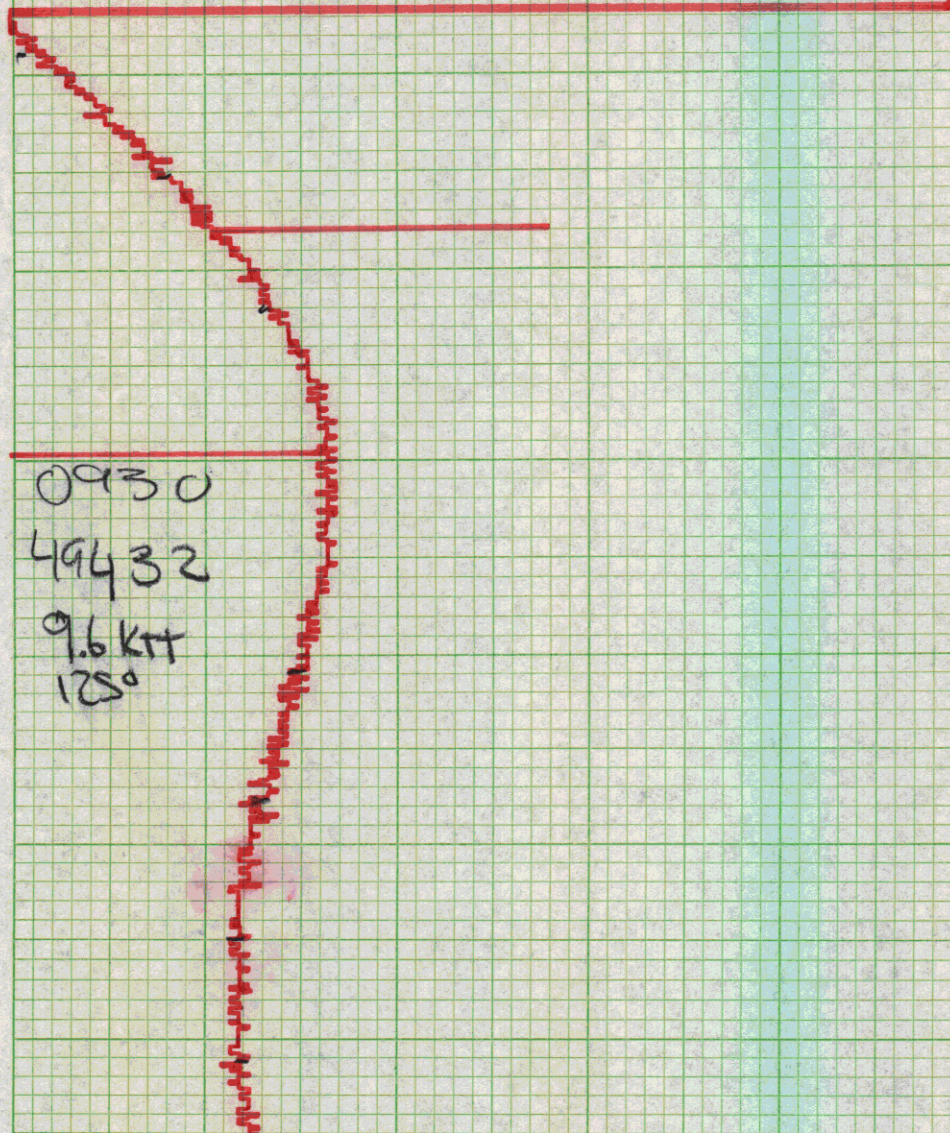
49289 x

12 MAY



1000 49364 x

12 MAY 1250 9.6 KTS



0930

49432

9.6 KTS

1250

49420

0900

9.5 KTS

125°

c/c

125°

49451

0830

9.5 KTS

130°

49493

0800

9.5 KTS

130°

49546

0730

9.5 KTS

130°

0700

49613

9.5 KTS

130°

0630

49697

9.5 KNTS

130°

0600

49751

9.5 KTS

130°

49787

0530

9.5 KTS

130°

49809 0500 C/C 130° 9.5

0430Z C-135° S-9.5kts 49846

0400 C-135° S-9.5kts

49870

0335 c/s 9.5

0330 9.0 kts 135° 49873

0325 c/s 9.0 kts

0300 Z 135° 5.5 KTS 49874

0230- 135° 5.5 49885

c/c 0210 135°

c/c 165° - s-s.5 49902 0200

49927 135 5.5 0130

c/c -0105
135°

0100 12 MAY 5.5 KTS
49948

49964 5.5 KTS
12 MAY 105.
0030

2100 5.5 KTS
49978 11 MAY

2330 S.S KTS
499.14 V

2300 11 May 500108

S.S KTS

2230

08° S.S KTS

50020

11 MAY

2200
109°
50030
11 MAY
5.5 KTS

2130 105°
500368
11 MAY
5.5 KTS

50036 109° 55 KTS 2100

50037

1050

5.5 KTS

2030

50038

1050

5.5 KTS

2000

50040

1050

5.5 KTS

1030

200 105 5.5 KTS 1930

50044 1050 5.5 KTS
1900

50052 1050 5.5 KTS
1930 Z

1800 Z 105° 515KT
50064

115°-5.5 1730 50069

E/C 115°

088-5.5 1700 50065

088° - 5.5 kts 1630

50064

088 - 5.5 kts - 1600Z

50075

50090 1530 - 5.5 085°

1510 C/C 088°

— 50104-15007-5.5kts 085°

685-5.5-1430 50118

085° - 5.5 kts 1400
50124

50121 - 085° 5.5 kts -
1330

c/s 5.5 kts 1317

1300 085° 50109 6 kts
11 MAY

1240 c/s 6 kts

11 MAY 1230 500968 085° 4.7 kts

1225 c/s 4.3 kts 500928

1200 085° 6 kts 50085

1130 11 MAY 500958 6.6 kts 085°

c/s 1125 6 kts

50073[✓] 085° 3 KTS
11 MAY 1100

1036 3 KTS 085°

50080 +
11 MAY

DELET

1001 085 C/S 3.0 KTS

1000 085 910ts 50087

data
gap

50080 11 MAY 085°
9.6 KTS

50089 0900 0.85° 9 KTS

0/s 085 0857

C 12

10°

2007

50074

0430

.70°

9 KNTS

50034

0800

.70

9 KTS

49991

0730

.70

9 KTS

49 965

0700



0.70°

9 KTS

0635 on

51900

49909

- 0.70°

9 KTS

0600

49919 - 070° - 9 Kts
0530 Z

49933 - 070° - 9 Kts
0500 Z

49921 - 070° - 9 Kts
0430 Z

C/C 070°- 9KTS 0400Z 49912

075° 9KTS 0330Z

49886

0300-075-9kts

49861

49851

$$\begin{array}{r} 6 \frac{1}{2} \\ 6 \overline{) 39 \frac{1}{2}} \\ \underline{36} \\ 3 \end{array}$$

49829

0200-075-9kts-

0130 - 49799
075° - 9 kts

0120 d/c 075°

0100 000° 9.7KD
49773
11 MAY

0030 49770 9.8 KTS
080°

0000 11 MAY 49760

080°
9.7 KTS

CRUISE:

IG-15-1

INSTRUMENT:

mag. g. res

BEGIN DATE:

11 MAY 75

TIME:

0000

(Z)

END. DATE:

TIME:

(Z)

BEG. LAT.

LONG.

END. LAT.

LONG.

REMARKS (SWEEP SPEED, ETC.):

100 g scale

