

END ID-12
18 OCT, 1974
1638 Z

50769 1638

1635 Z $\frac{1}{2}$ 290°

50768 1630

50754

1616

18 Oct

50724 1600Z

~ c/c 305°

50686 1545

50645 1530

50614 X 1515 X

50592 1500

50579

1446

50562

1431

50538

1415

50533

14002
9.6K

50540

1345

50550

1330

1800

50565 1315 z

50579 1300 z

50586 1245

50573 1230

50550 1215

C/c 310°

50529

1200

50494

1145

50468

1130

315°

9/15

50445

1115

50425

1100

315°

9/15

50404 1045

50379 1030 315°
10.2 kts

50359 1015

50336 1000
315° 9.6 kts

1800t

50314 0945

50294 0930
315° 9.6 kts
1700t 74

50218 0915

0902 Z 50258 Y

315° 9.6 Kts

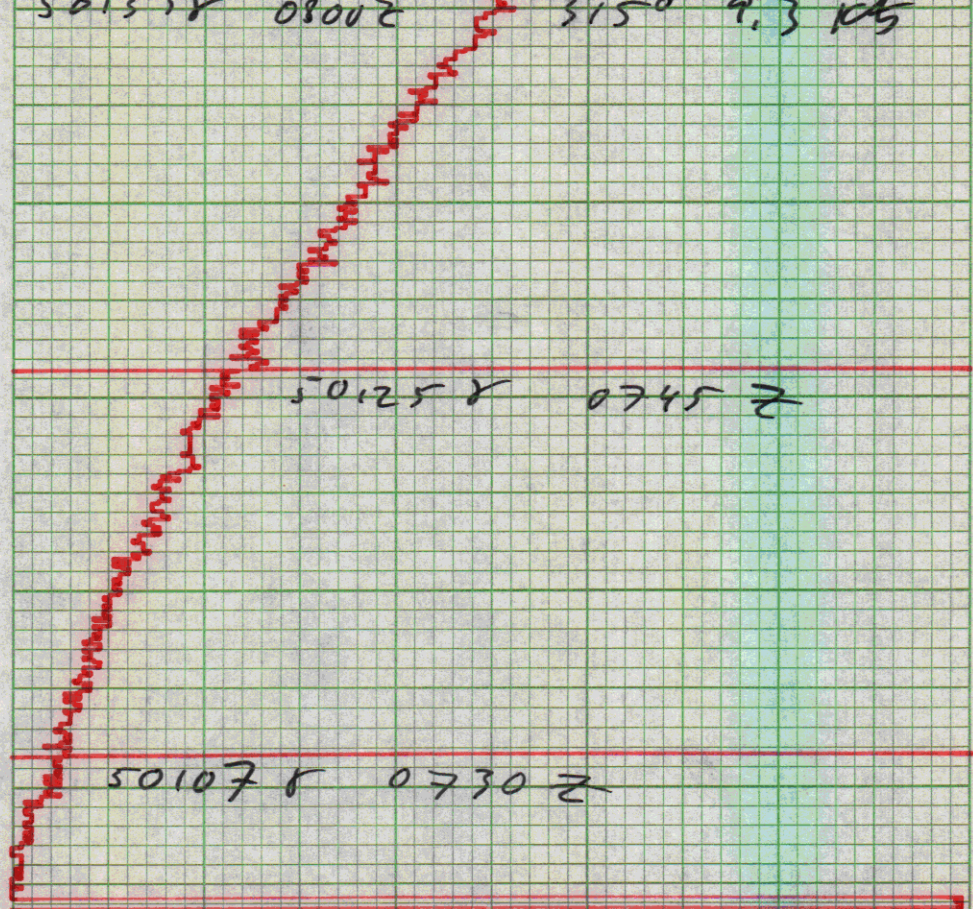
50242 Y

0815 Z

50217 Y 0930 Z

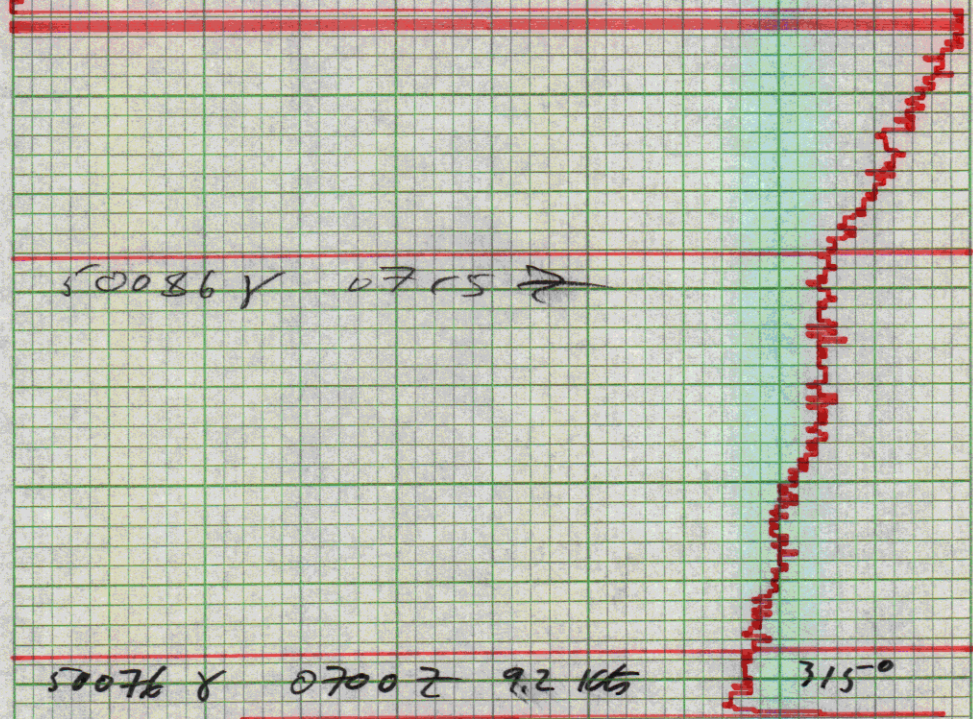
50186 Y 0815 Z

5015 Y 0800 Z 3150 9.3 KG



50125 Y 0745 Z

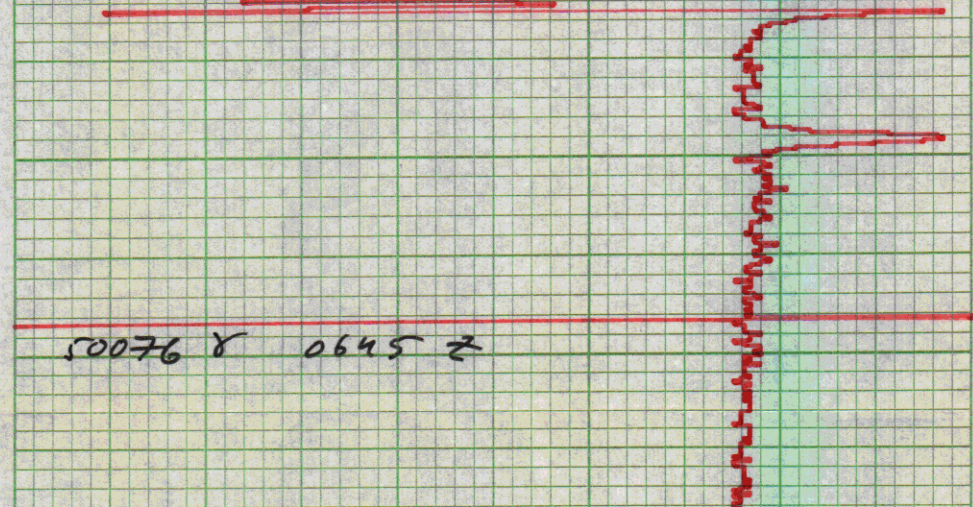
50107 Y 0730 Z



50086 Y 0715 Z

50076 Y 0700 Z 9.2 KG

3150



50076 Y 0645 Z

50068 X 0630Z
50068 X

50065 X 0615Z

180ct

50055 X 0600Z 315° 7.2 KC

0556 Z c/c 315°

50057 Y 0545Z Z 54.50

up to avoid
oil rig under
tow

0540 Z
0536Z

c/c 265°
c/c 275°

0534Z

c/c 285

50052 X 0530Z c/c 295°

50031Y 0515Z

50015

0500

49990

0445

49961 Y 0430Z

315° 9.0kts.

49937

0415

49925
9.0kts
315°

0401Z
18. X. 74

ID-12

~ 27° 45 ; -92° 55
to Galveston

