

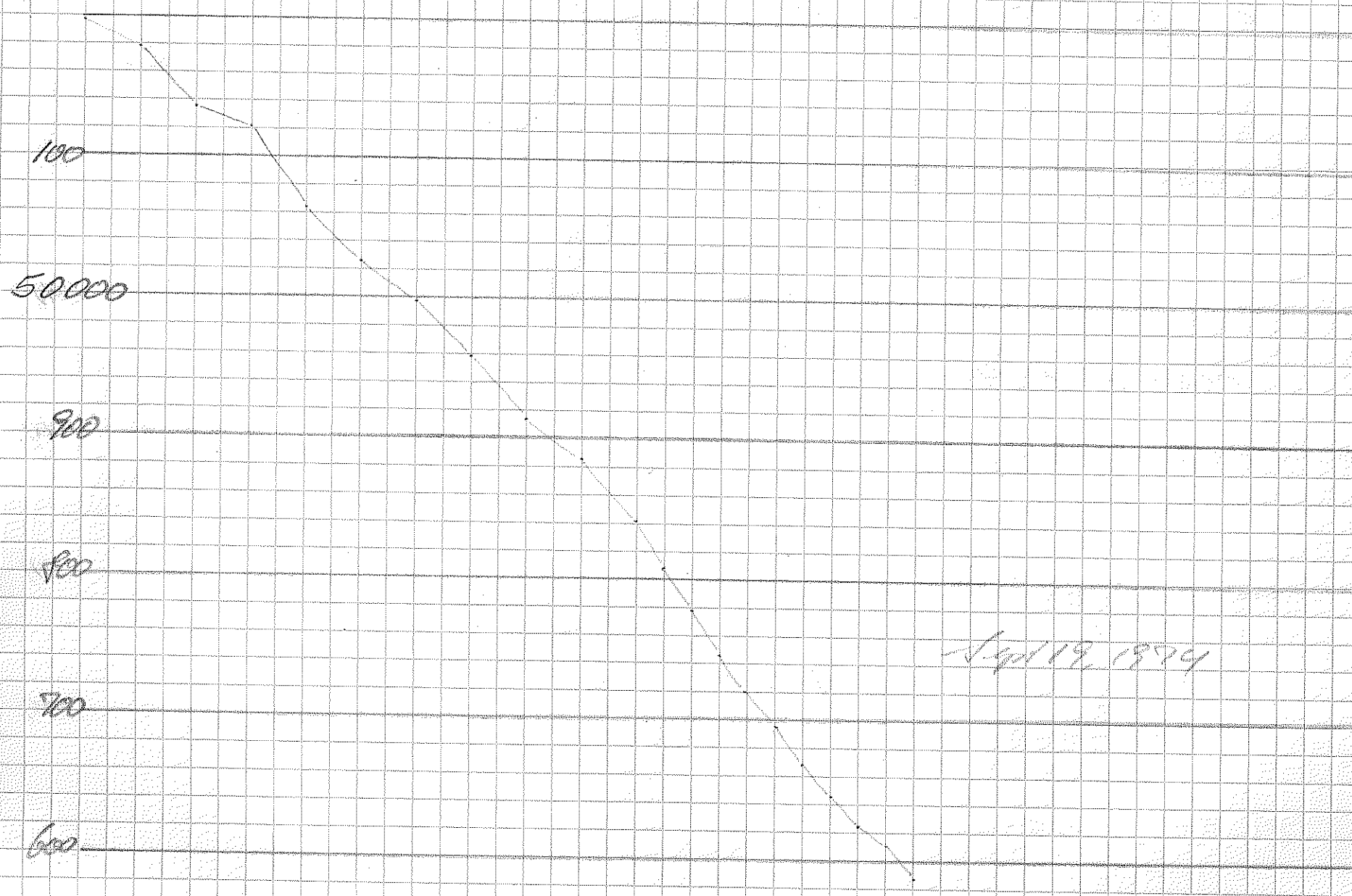
IG-12 IDOE

WG H

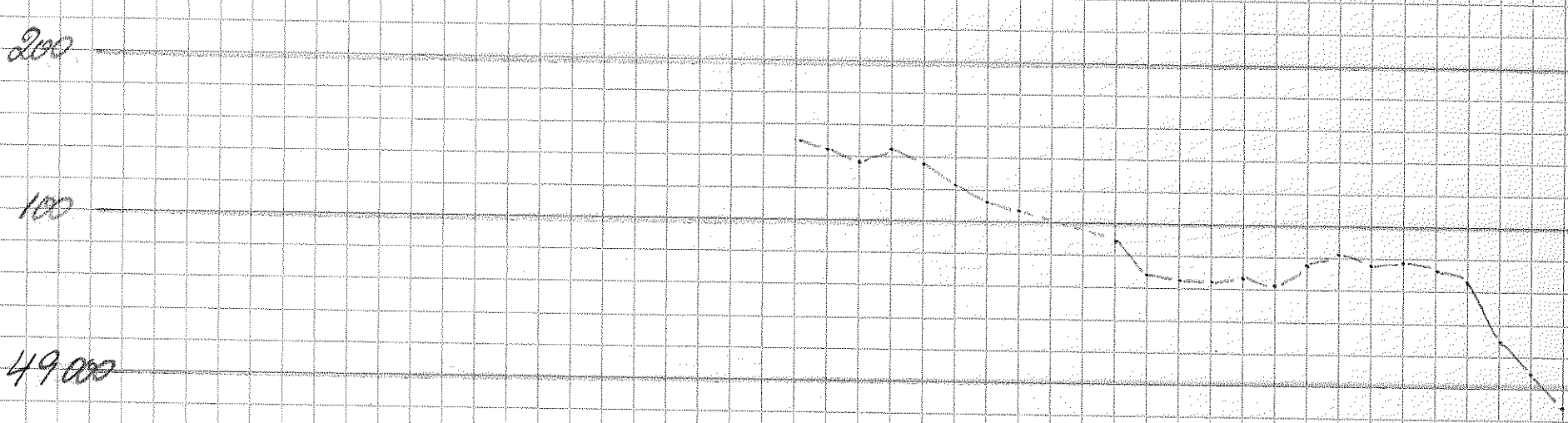


53-110  
EYE-EASE PAPER  
Made in U.S.A.

95¢



$$CDT = GHT - 5h$$



$$CDT$$

12 13 14 15 16 17 18 19 20 21 22 23 24



49000

900

800

700

600

Sept 20, 1974

CDT

0

1

2

3

4

5

6

7

8

9

10

11

12

600

500

400

300

200

Sept 20, 1974

12

13

14

15

16

17

18

19

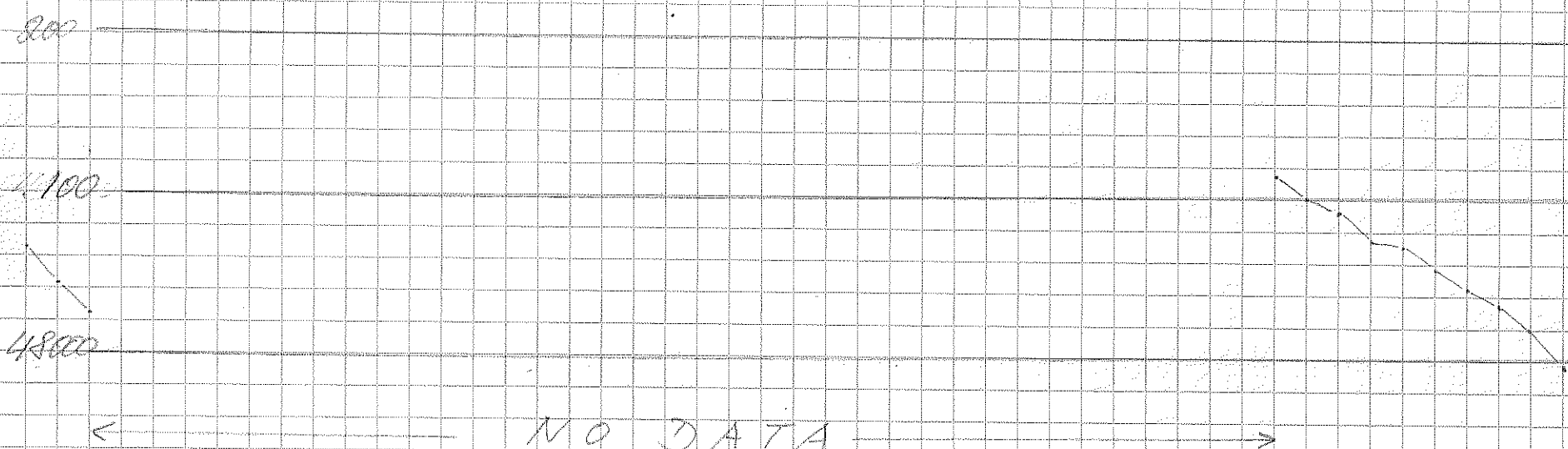
20

21

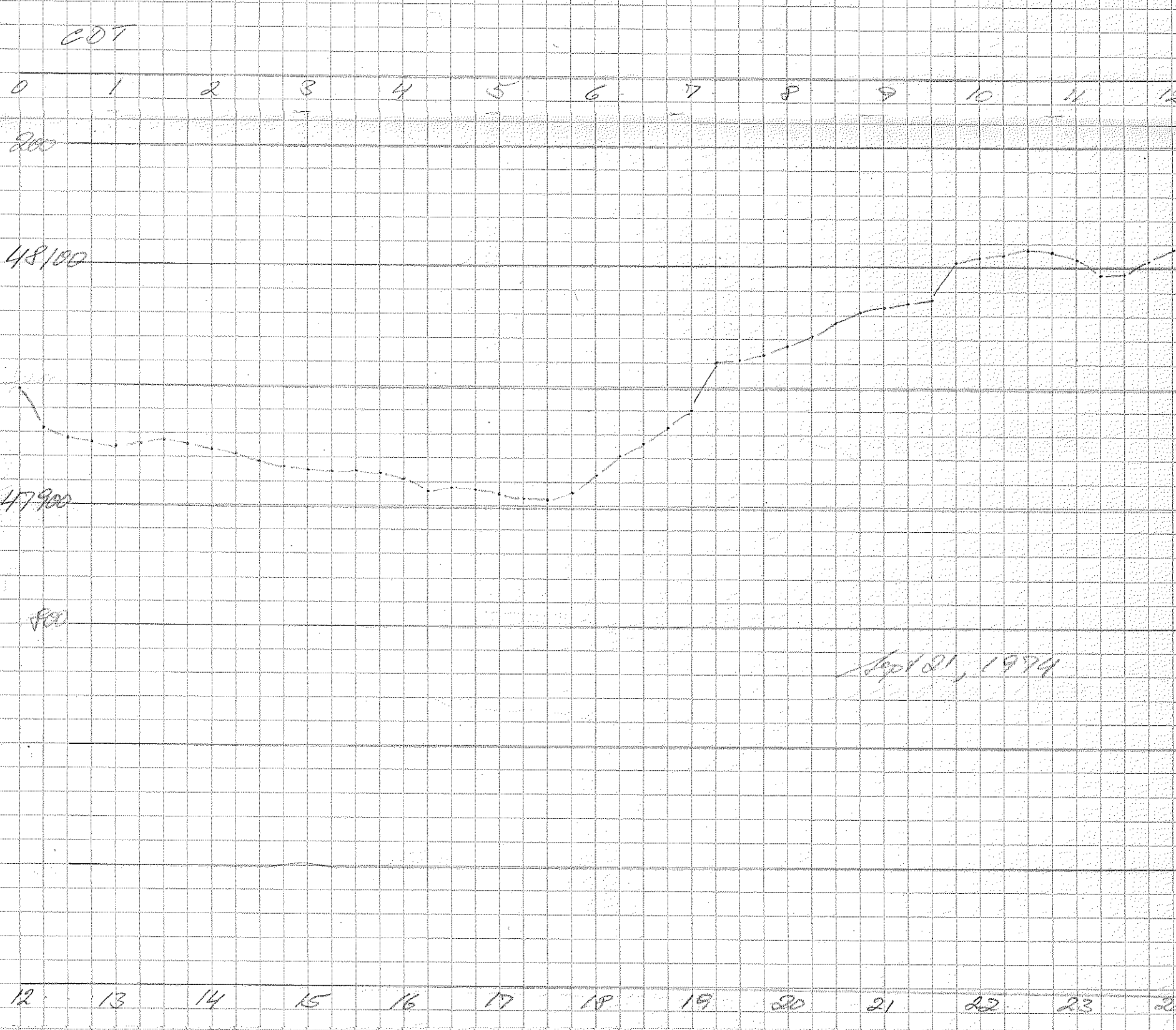
22

23

24



Sep 21, 1974





300

200

48800

Sep 122, 1974

EDT

0 1 2 3 4 5 6 7 8 9 10 11 12

200

48000

900

Sep 122, 1974

12 13 14 15 16 17 18 19 20 21 22 23 24

200

48000

900

800

Sep 123, 1974

007

0 1 2 3 4 5 6 7 8 9 10 11 12

← NO GAP (change in time) →

48000

900

800

G.T.T (from now on)

12 13 14 15 16 17 18 19 20 21 22 23 24



48000

47900

700

Sept 24, 1974

0 1 2 3 4 5 6 7 8 9 10 11 12

48000

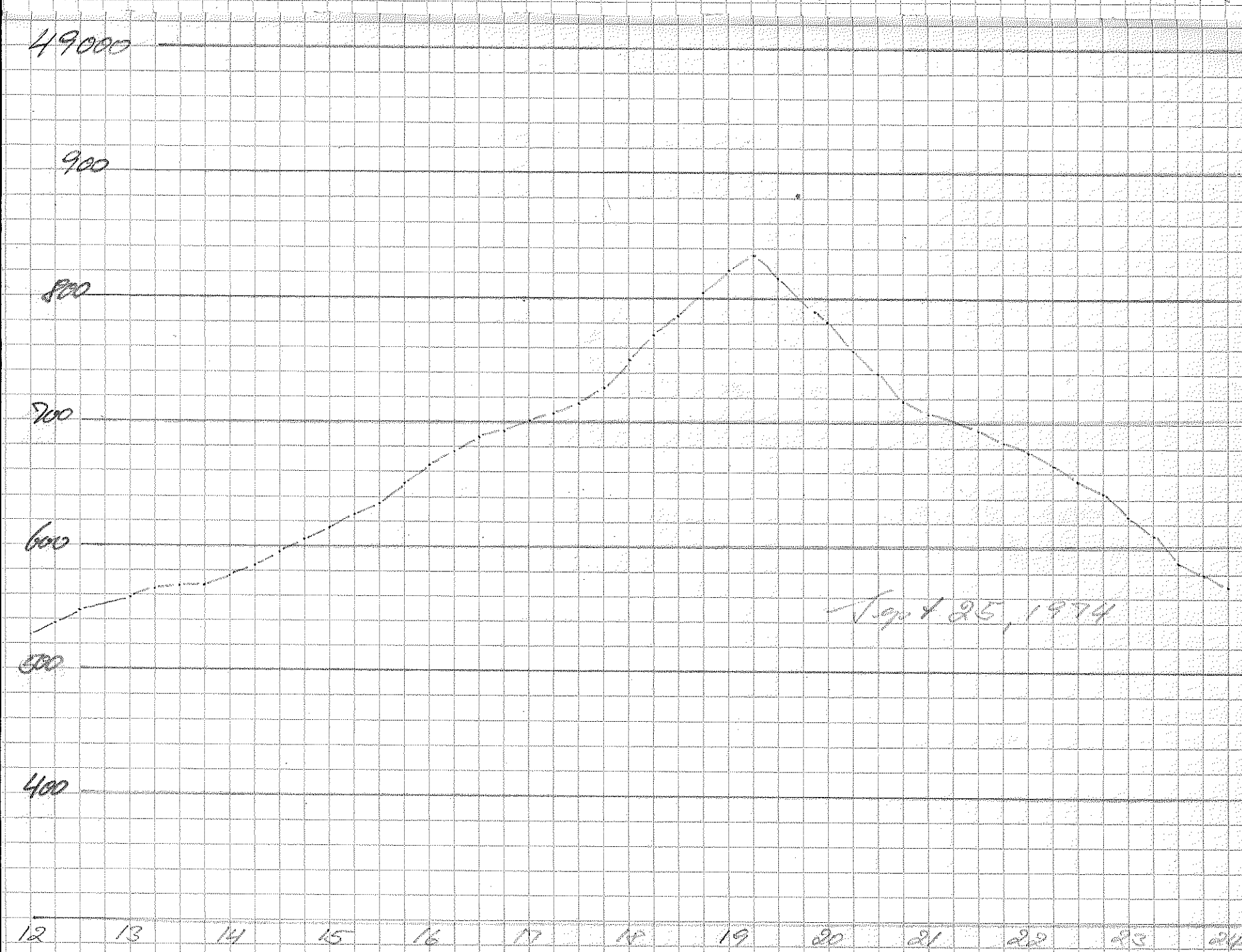
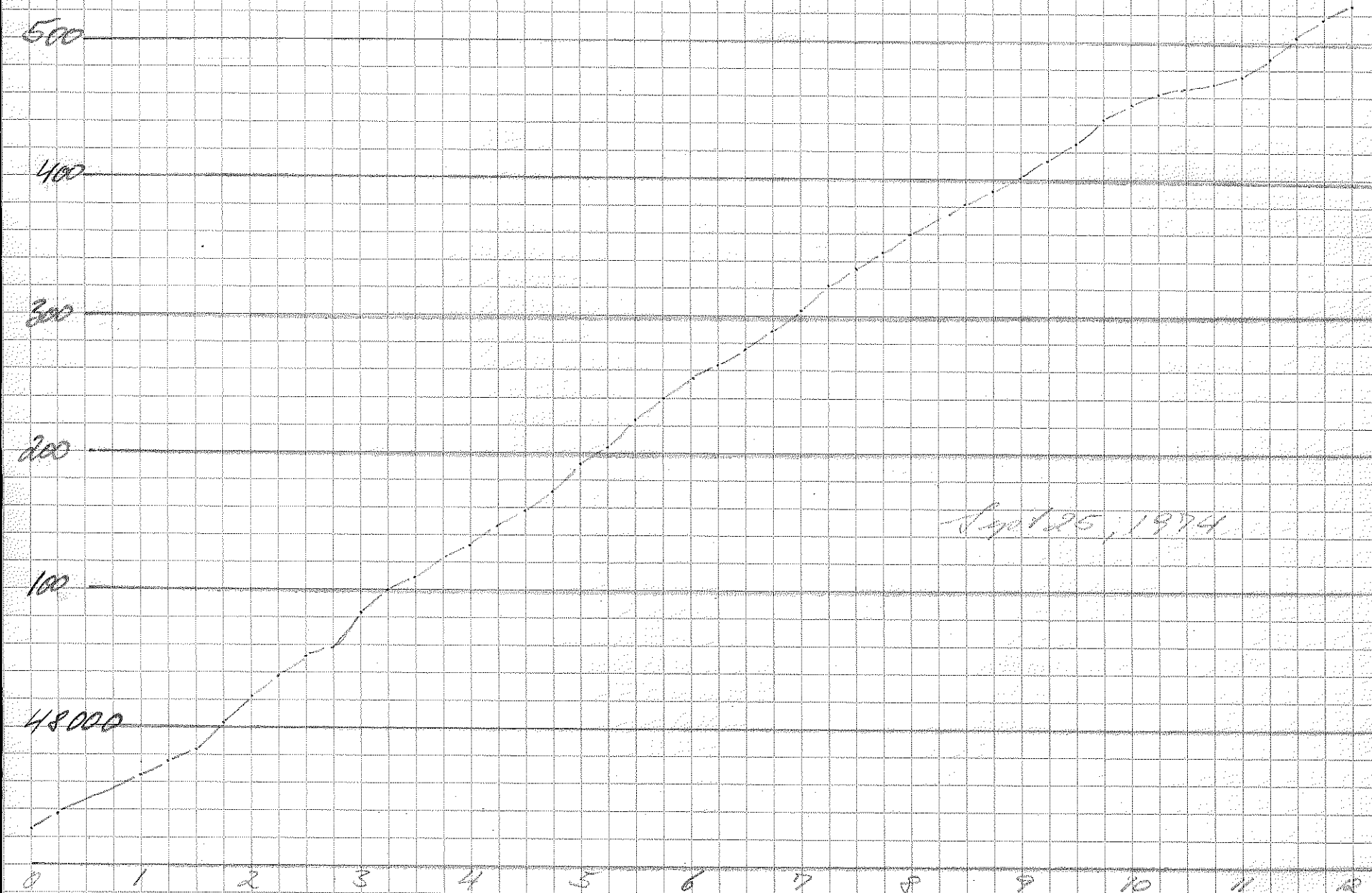
900

700

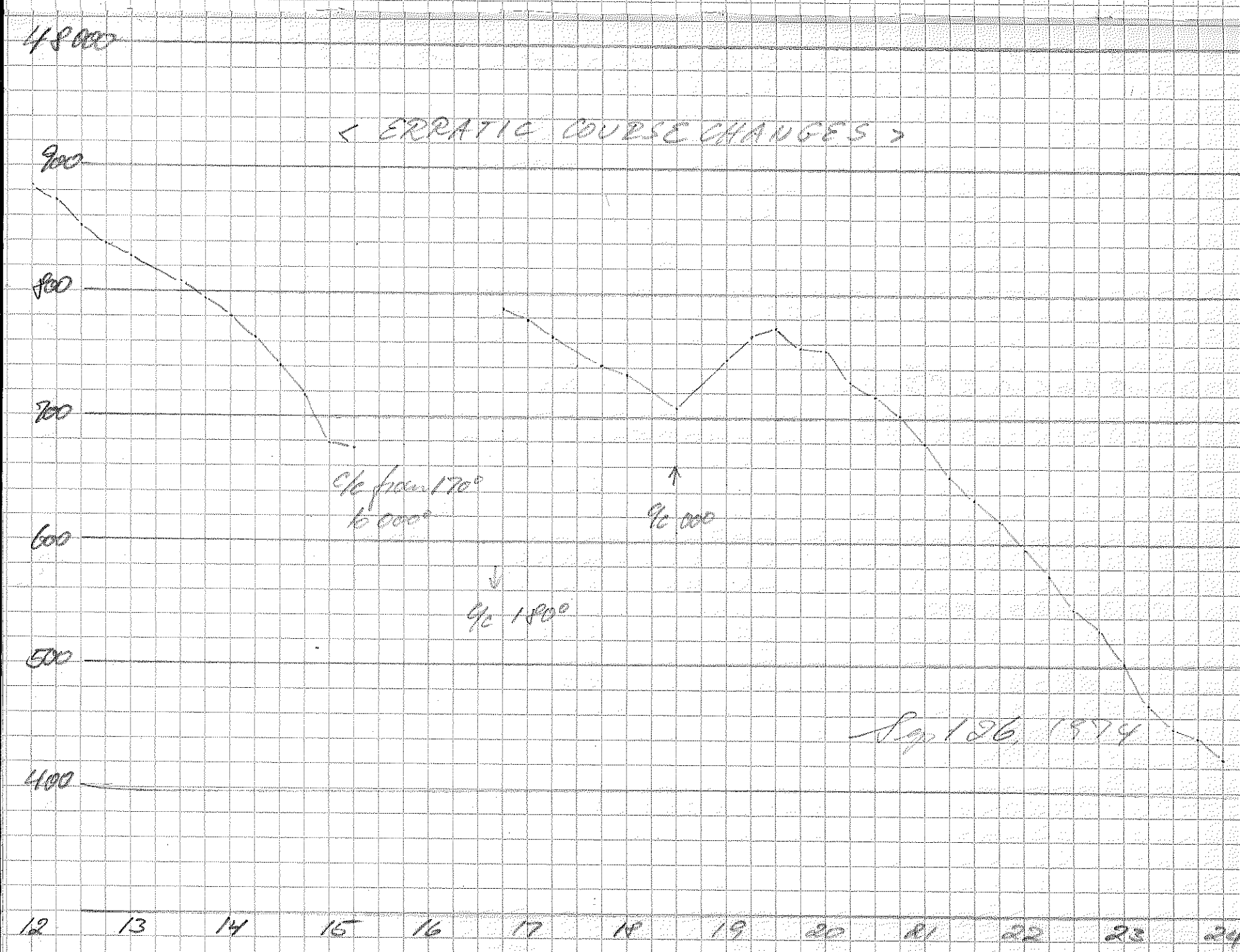
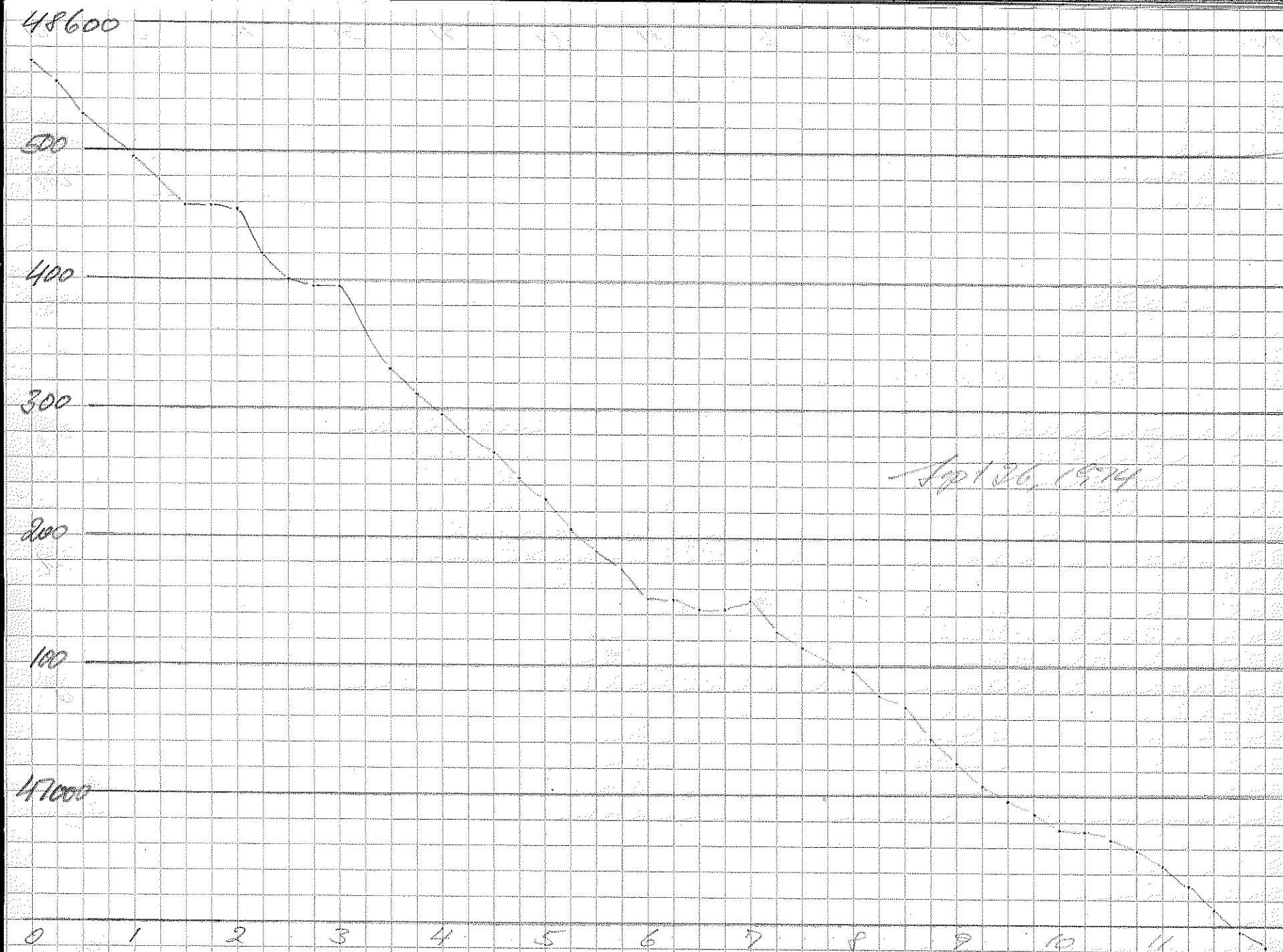
600

Sept 24, 1974

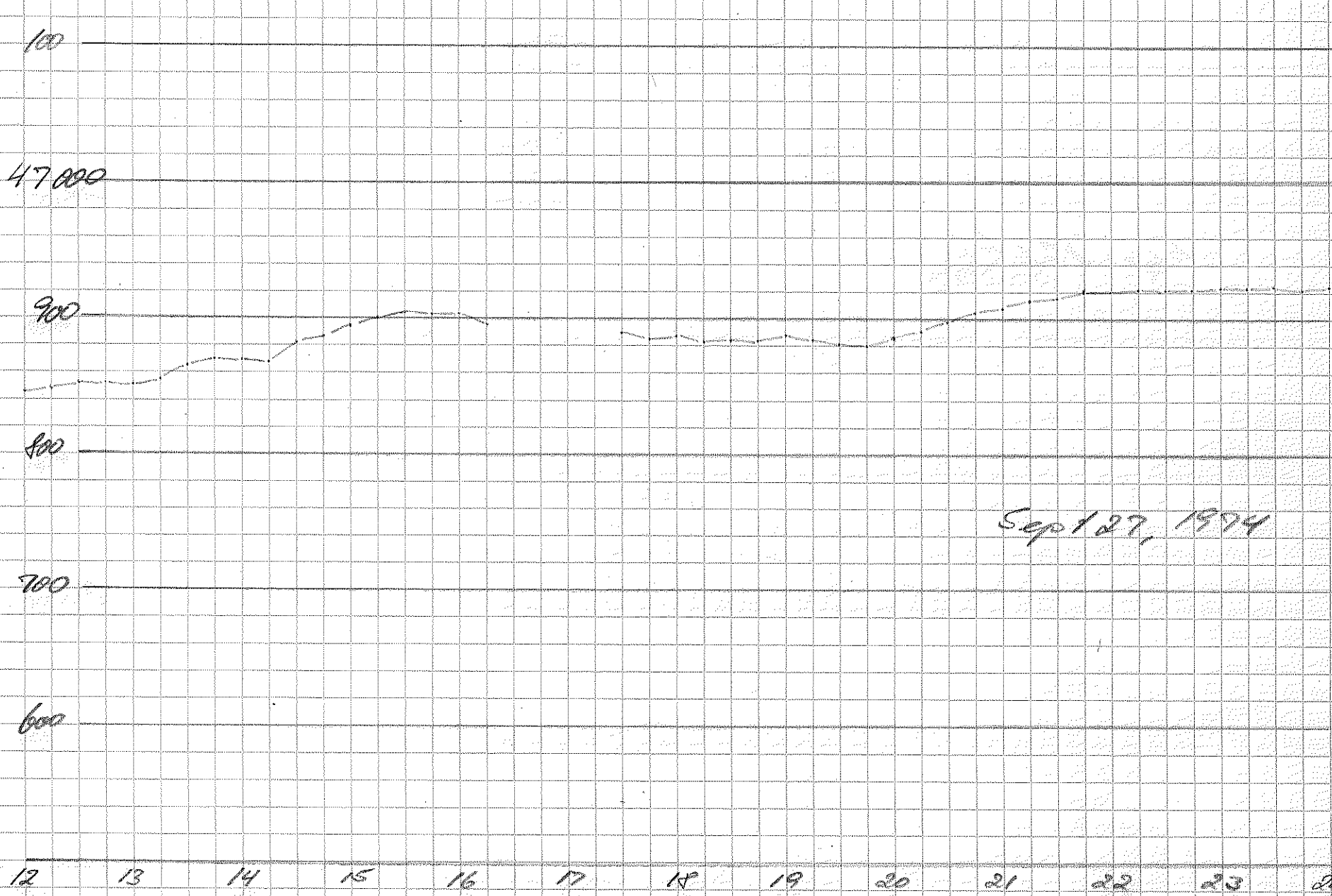
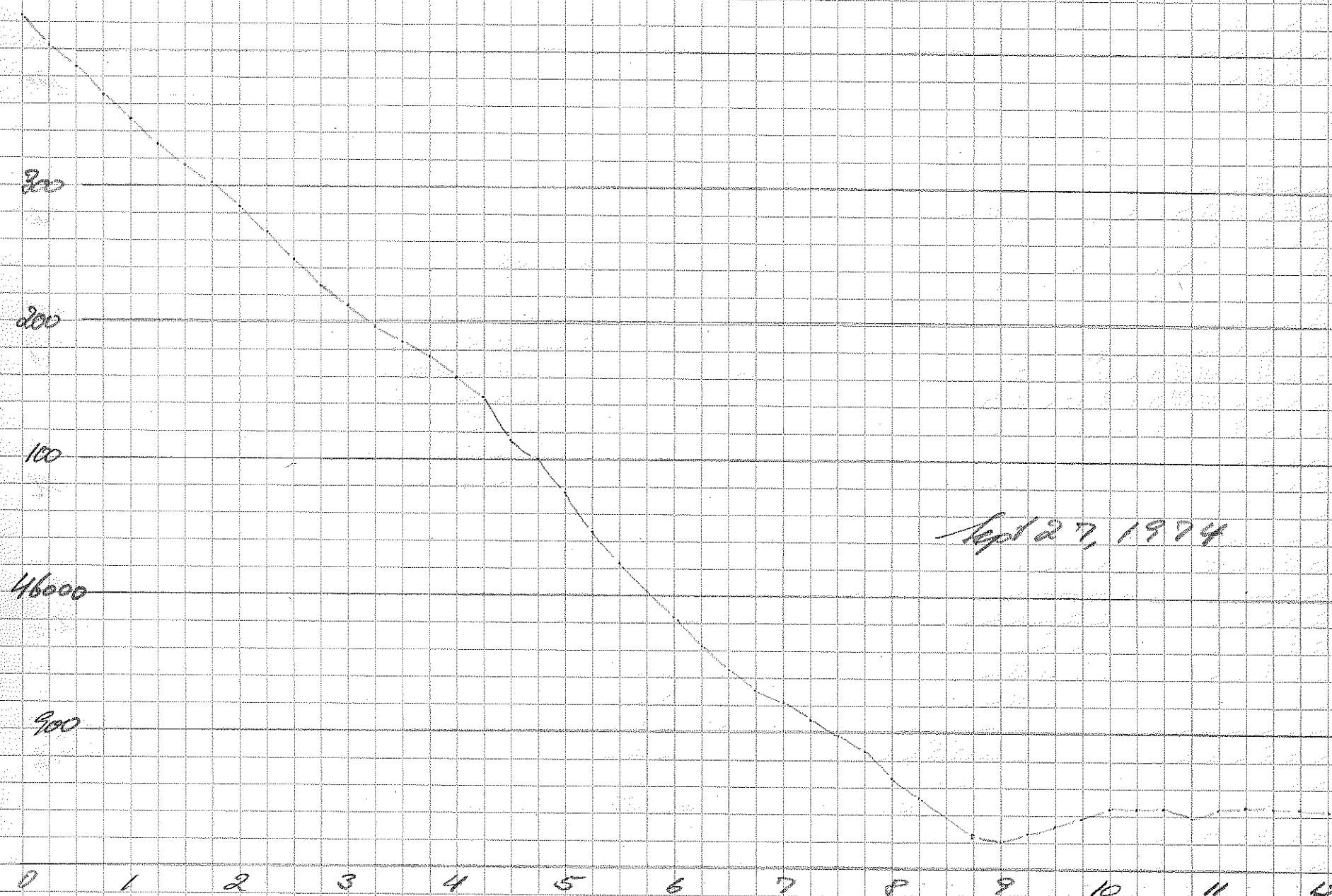
12 13 14 15 16 17 18 19 20 21 22 23 24







47500





47000

900

800

700

Sep 128, 1979

0

1

2

3

4

5

6

7

8

9

10

11

12

47000

900

800

700

600

Sep 128, 1979

12

13

14

15

16

17

18

19

20

21

22

23

24

47000

900

800

600

500

400

0 1 2 3 4 5 6 7 8 9 10 11 12

700

600

500

400

300

200

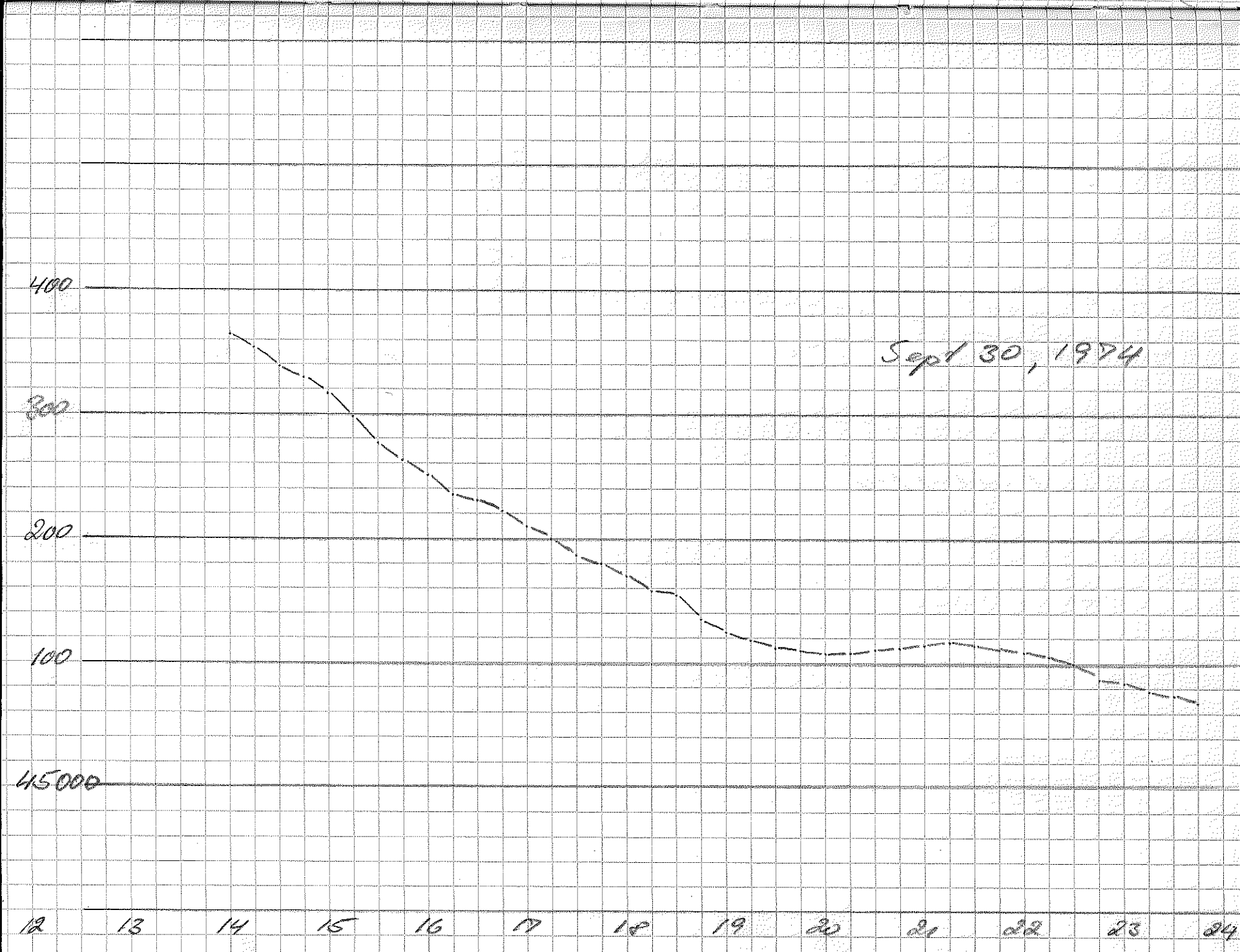
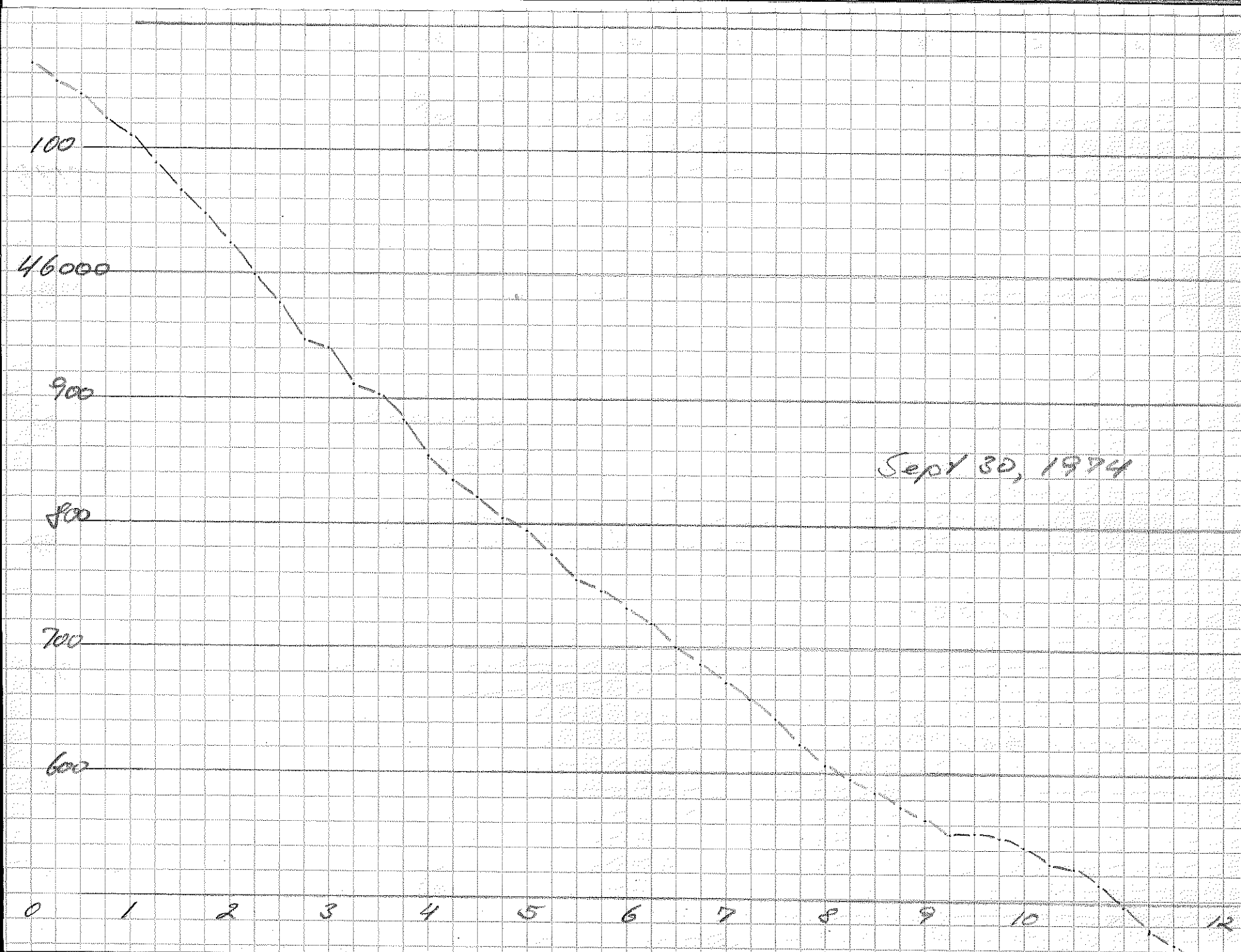
46100

12 13 14 15 16 17 18 19 20 21 22 23 24

Sep 129, 1974

Sep 129, 1974





415400

Oct 1, 1974

300

< NO DATA >

200

100

0 1 2 3 4 5 6 7 8 9 10 11 12

200

100

45000

44900

Oct 1, 1974

12 13 14 15 16 17 18 19 20 21 22 23 24



45000

44900

800

700

600

500

Oct 2, 1974

0 1 2 3 4 5 6 7 8 9 10 11 12

44600

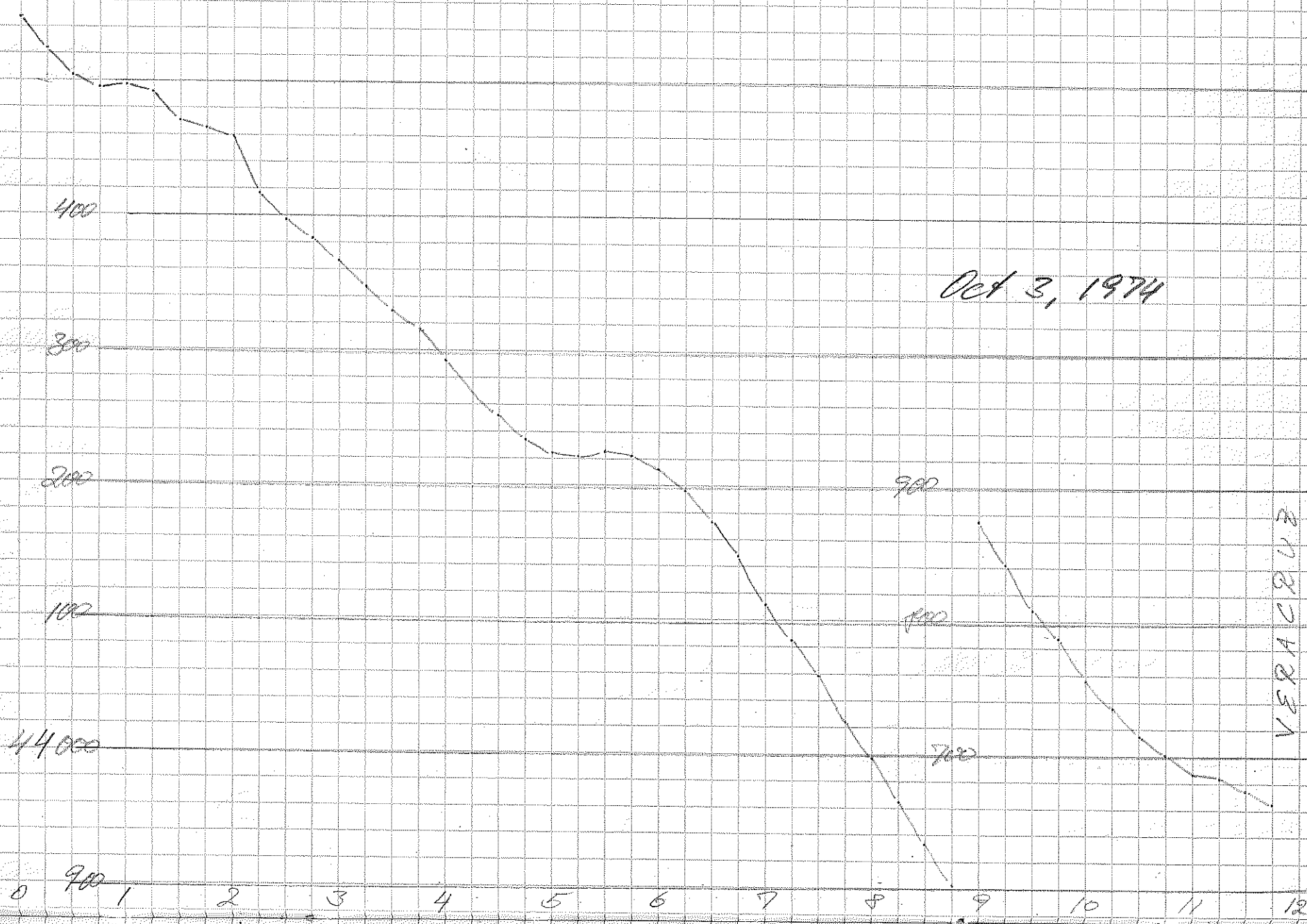
500

400

Oct 2, 1974

12 13 14 15 16 17 18 19 20 21 22 23 24

44600



VERACRUZ



Oct 8, 1974

VERACRUZ



43 800

43 700

0 1 2 3 4 5 6 7 8 9 10 11 12

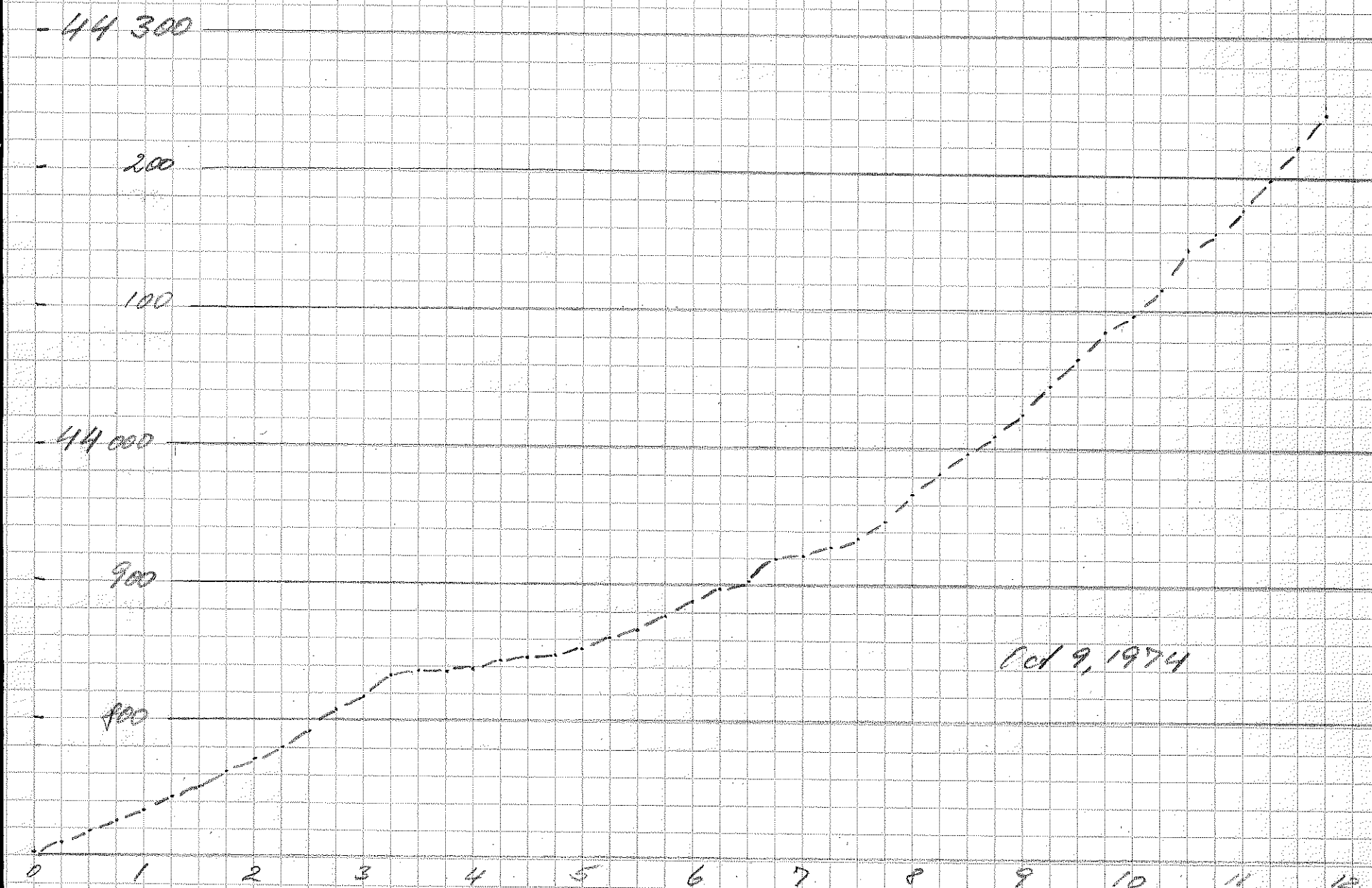
Oct 8, 1974

44 800

700

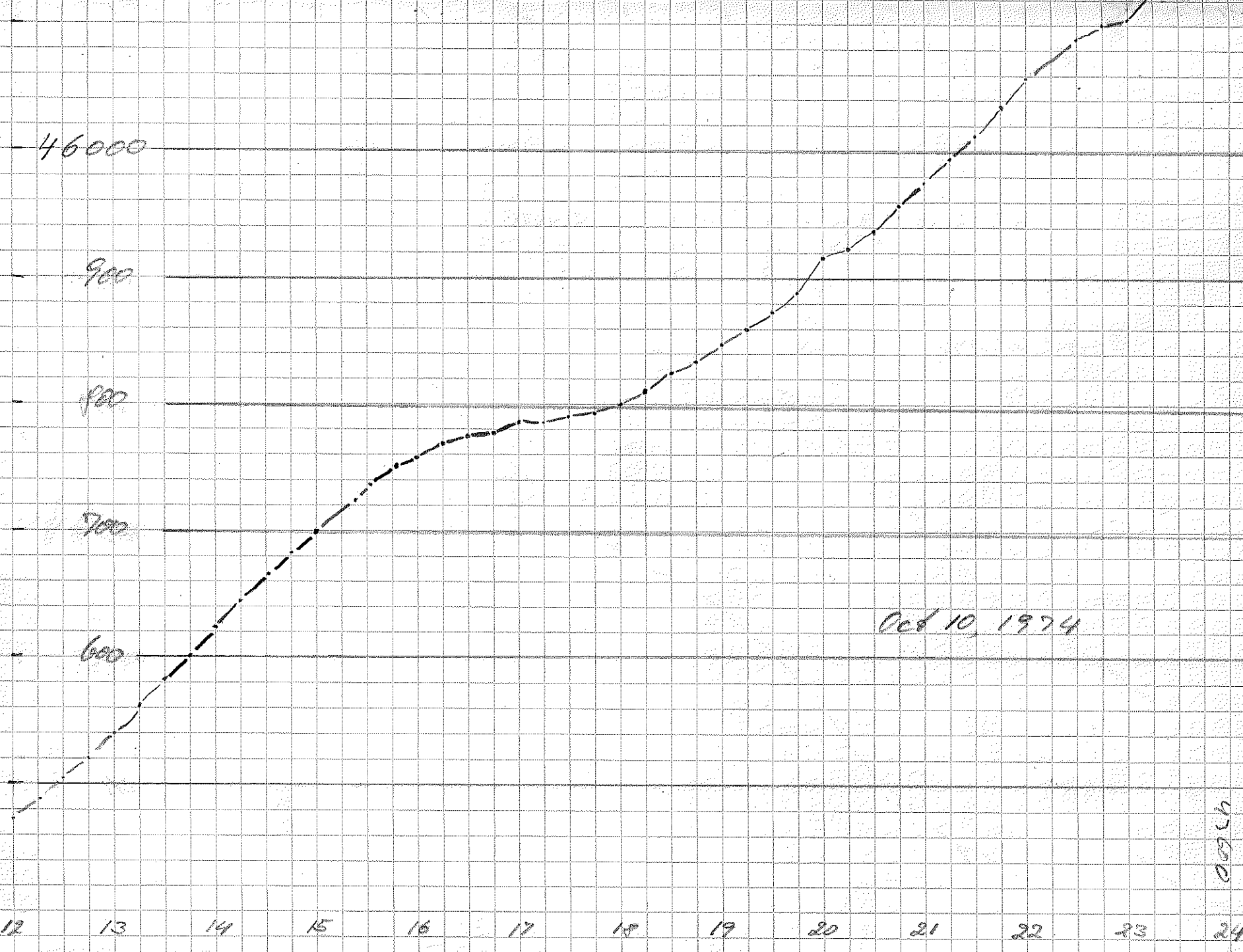
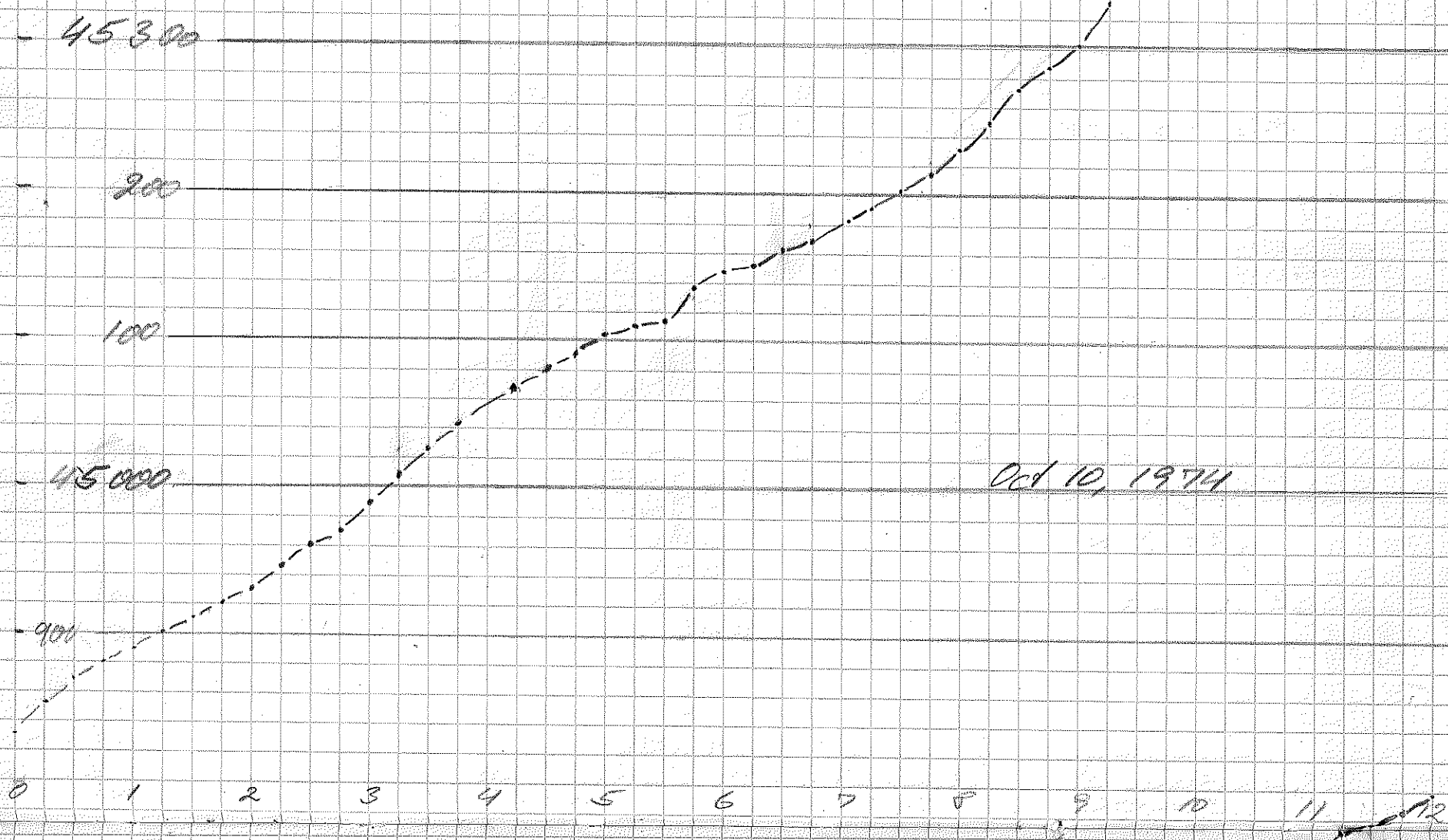
600

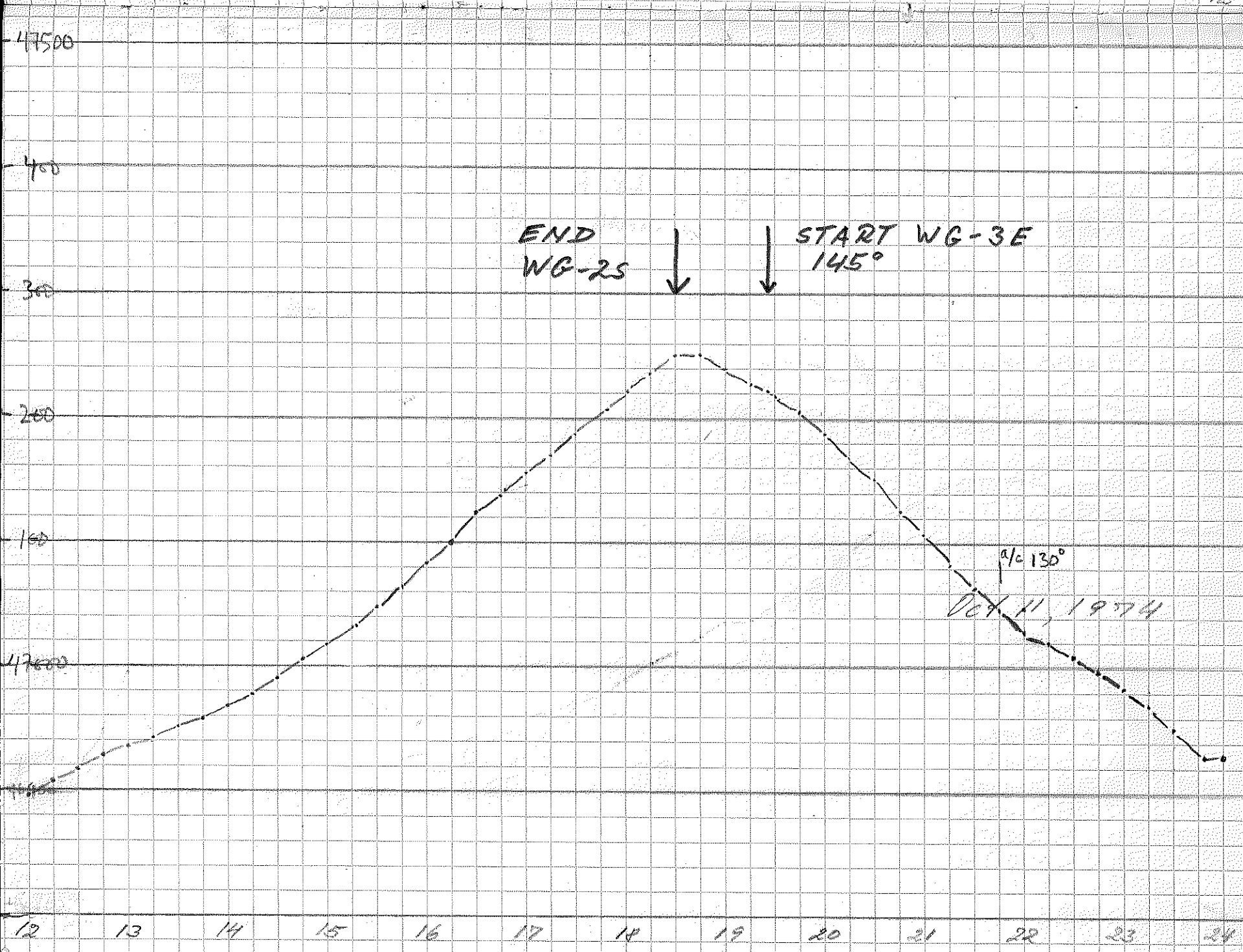
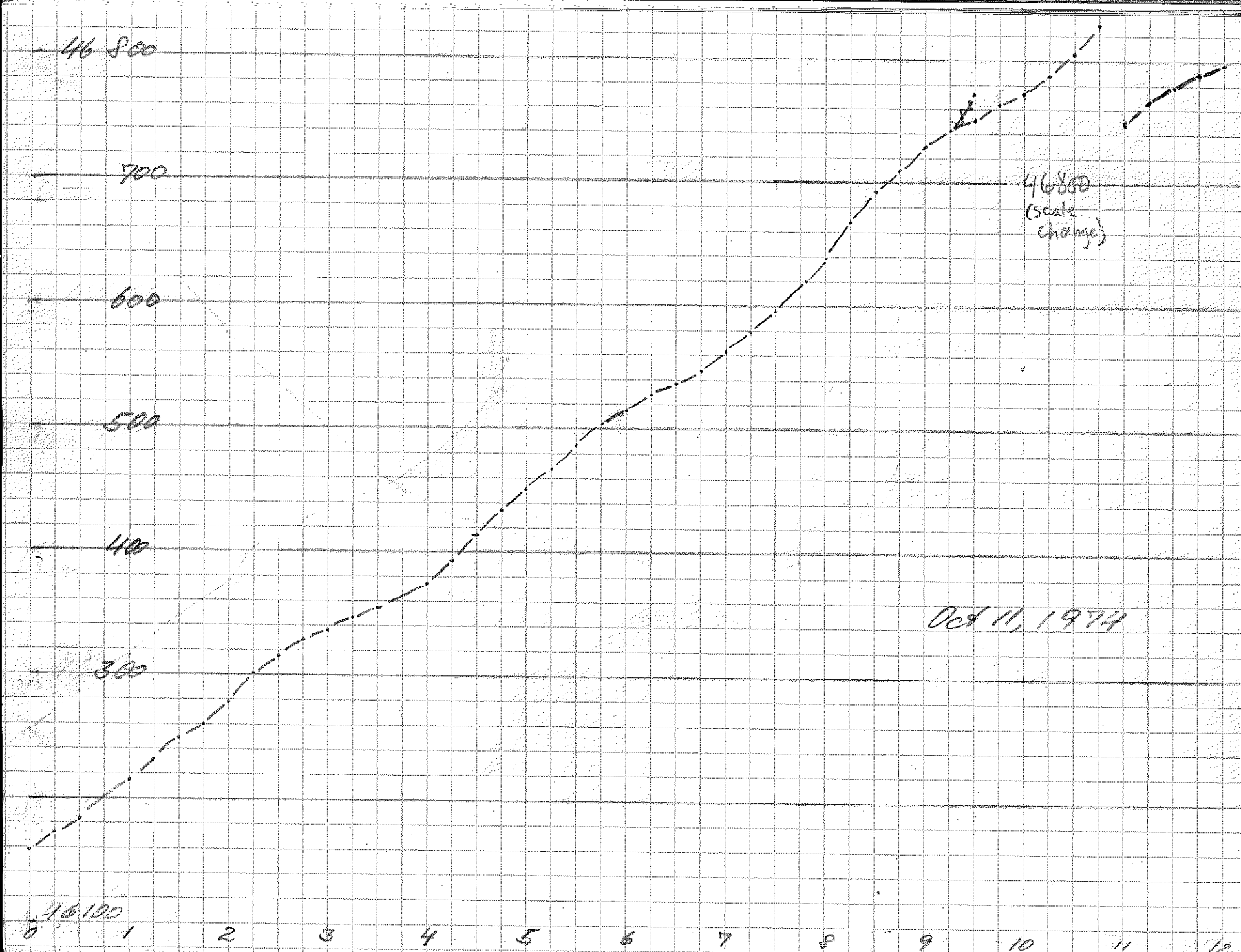
12 13 14 15 16 17 18 19 20 21 22 23 24





Wulf - Keep this plot going in this book - we've finished  
Leg 1 and there's no point in redoing them in this form now  
Plot as close to realtime as feasible

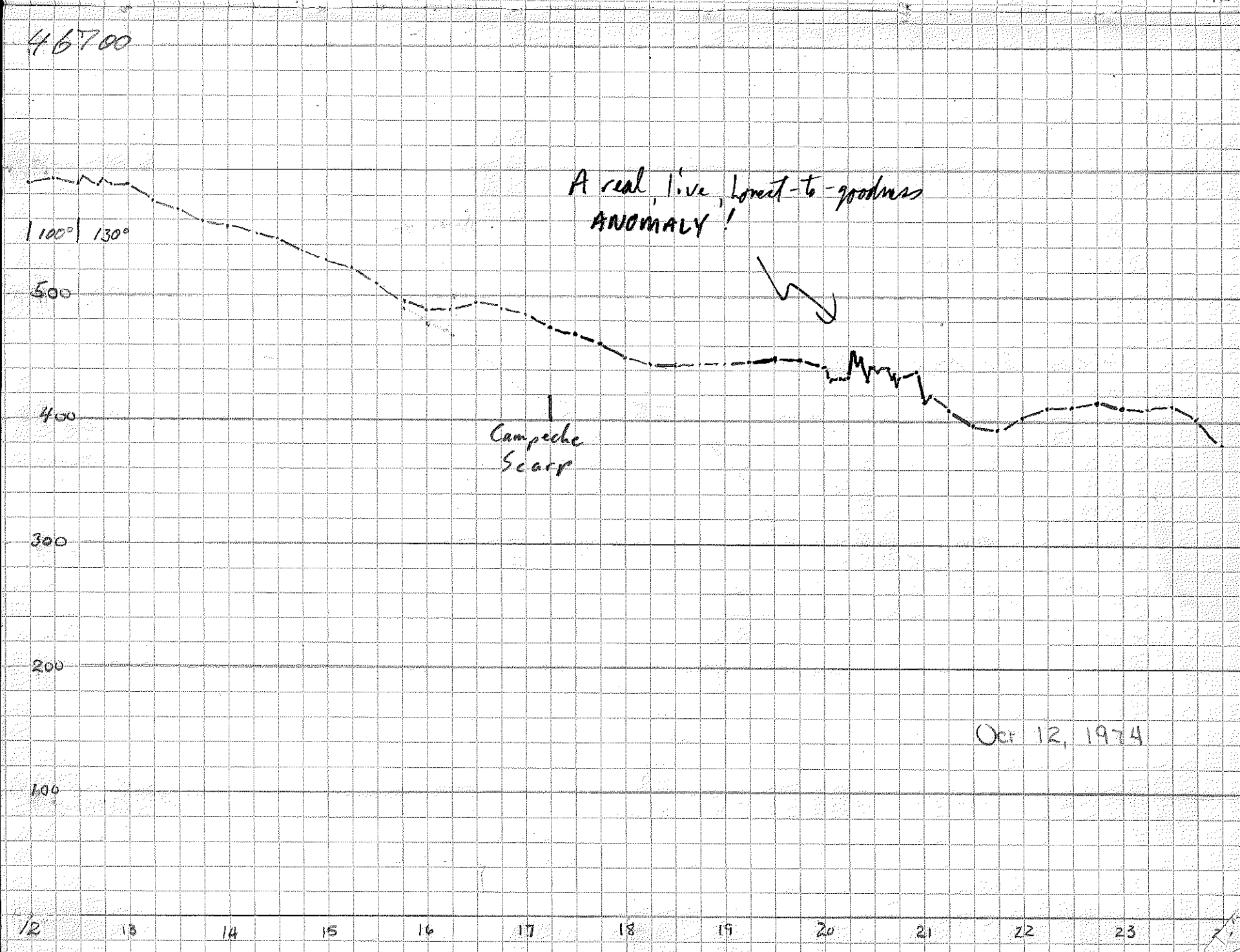






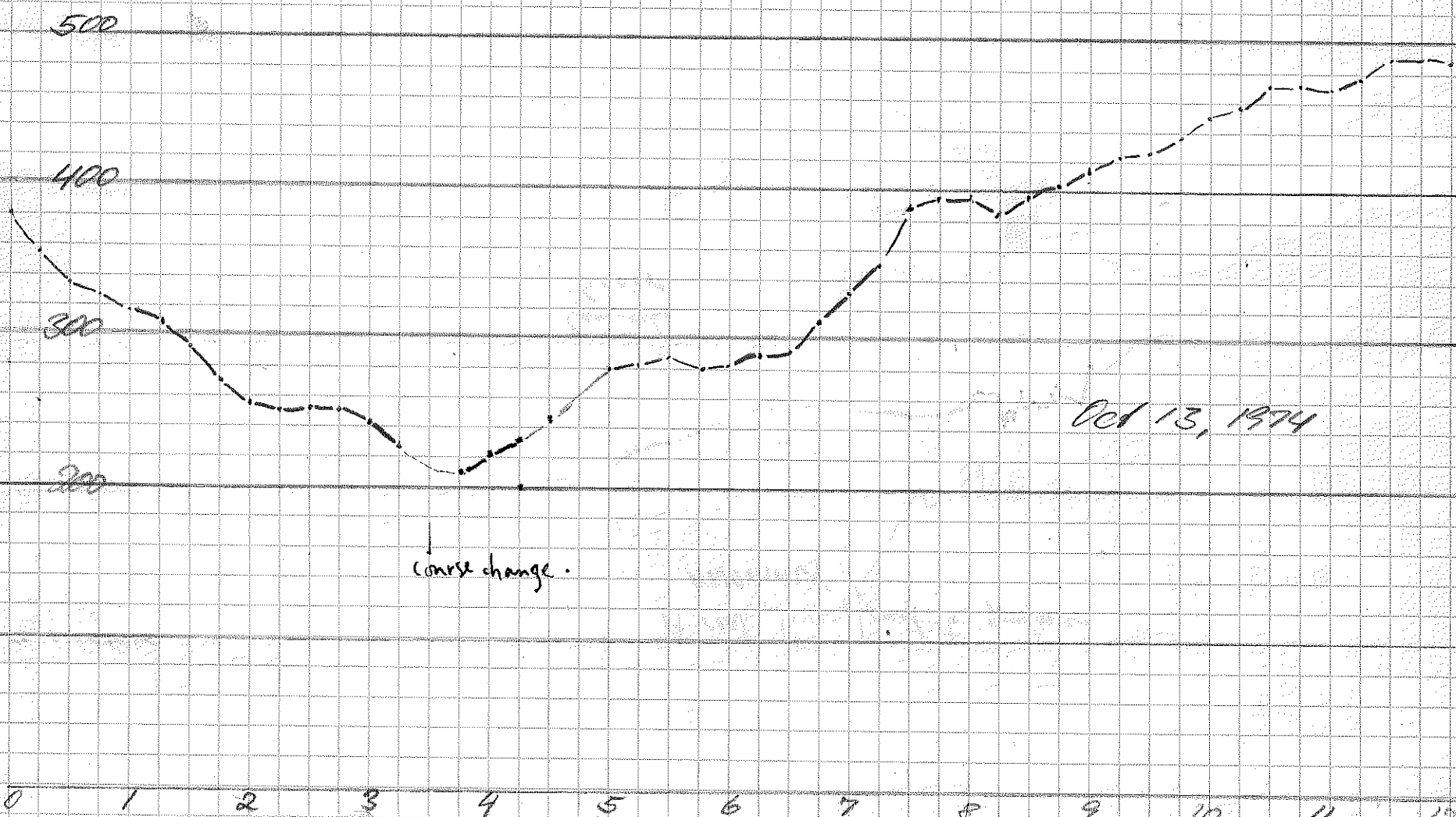


Oct 12, 1974



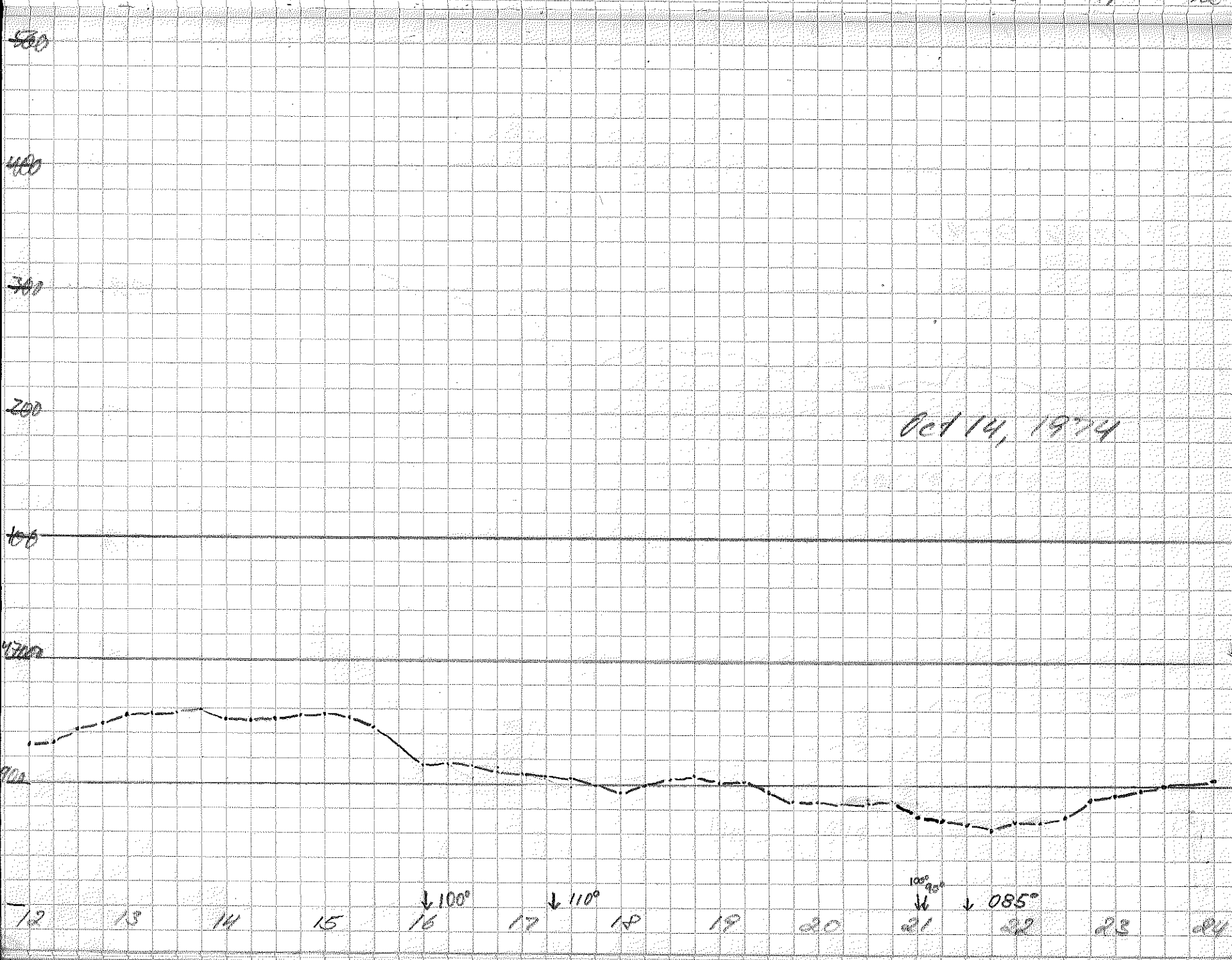
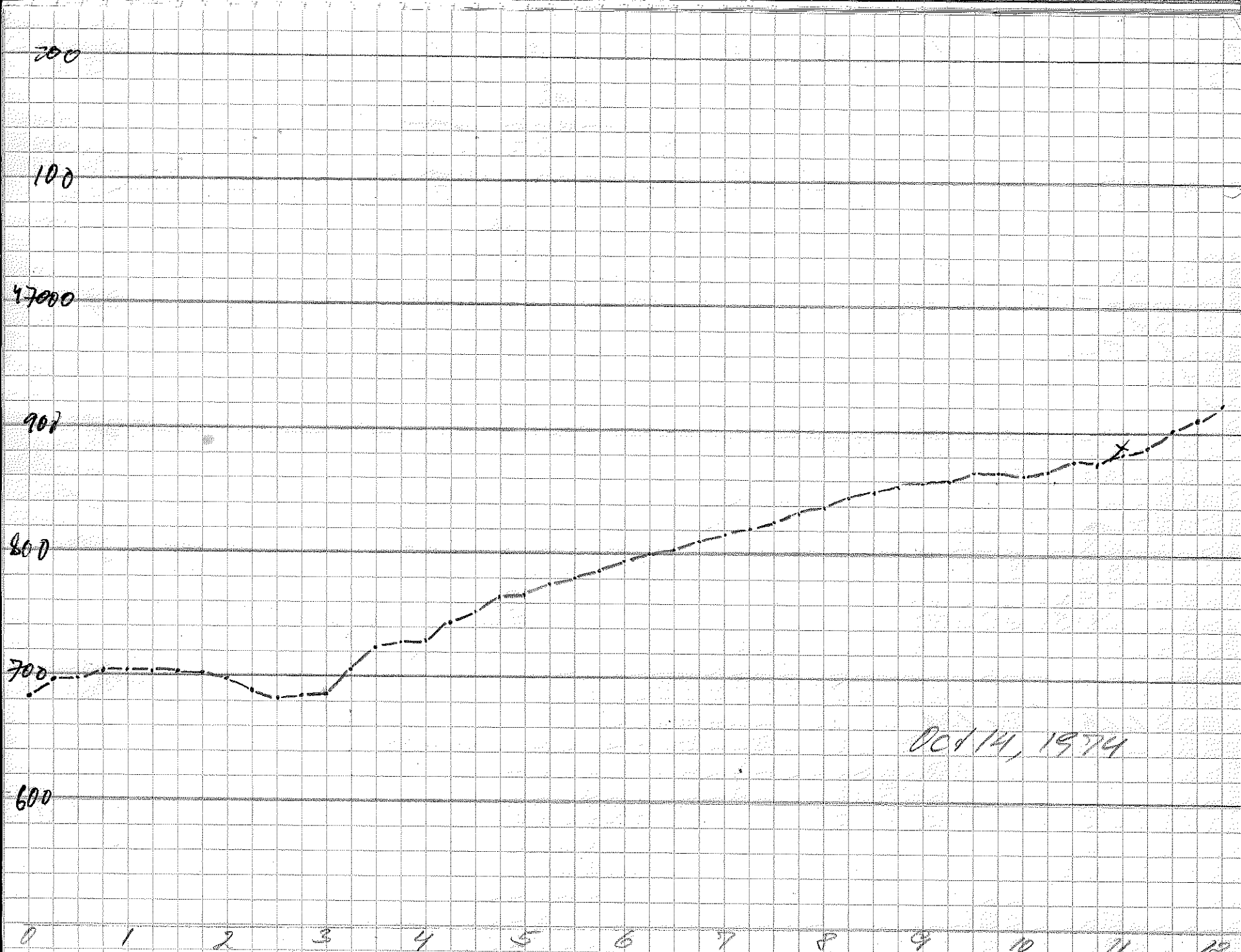
Oct 12, 1974

46600



47000







47500

400

300

200

100

47000

Oct 15, 1974

0 1 2 3 4 5 6 7 8 9 10 11 12

47600

500

400

Oct 15, 1974

300

200

Oct 15, 1974

↓ 080°

↓ 070°

47000

12 13 14 15 16 17 18 19 20 21 22 23 24

47900

800

700

600

500

400

300

Oct 16, 1974

0 1 2 3 4 5 6 7 8 9 10 11 12

300

200

100

48000

900

800

Oct 16, 1974

12 13 14 15 16 17 18 19 20 21 22 23 24

