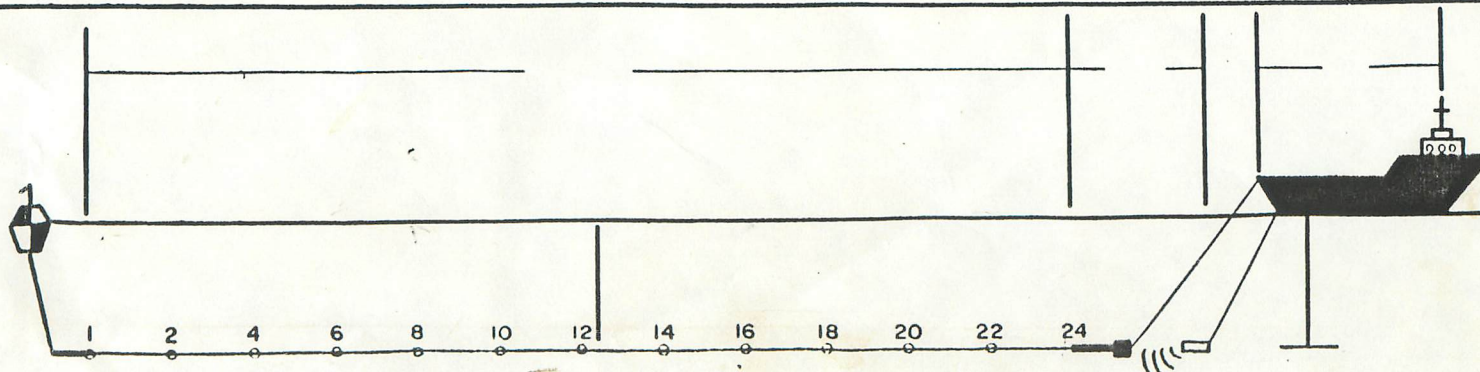


CRUISE FM 30	LINE SC 67A
START TIME 18:05:01 START LAT. 28 01.58 START LONG. 95 12.44	END TIME 144 12:53:26 ITB ENDING LAT. 26 47 89 N ENDING LONG. 94 44 01 W
23 May 85 SOURCE 2 AIRGUNS SOURCE DEPTH 35 FT.	SOURCE CAPACITY 4000 C.in 12:53:04
NO. OF TRACES 24 NEAR TRACE 24	GROUP INTERVAL .30 METERS FAR TRACE #1
INSTRUMENT FILTERS: LOW 8 HZ HIGH 62 HZ NOTCH	GAIN MODE 24 min break (shots 453-529) SLOPE SLOPE SLOPE
DATA LENGTH MIN. MAX. NOMINAL FOLD 8 FOLD	SAMPLE RATE 4MS. REP RATE 21SEC SPEED 4.2 KNOTS NOMINAL SHOT DISTANCE 45.4 M.
REMARKS	



[illegible]

七

$$\begin{array}{r} 15 \text{ } 17 \text{ } 2 \\ 5 \text{ } 1 \\ \hline 14 \text{ } 5 \text{ } 6 \end{array}$$



to be  
completed  
for each  
new line

REEL NUMBER	TIME	SHOT #	RECORD #	REC LEN	REP. RATE	FLD	Sam interval	STREAMER DPTH				WATER DEPTH		REMARKS	OB init.
								←	←	←	←	←	←		
300012	14 03 53	0047	3313	8	21	8	4	46	37	35	50	37	41	Guns On; New Line# START TAPE	
300012	14 06 21	0054	3320	12	21	8	4	46	37	35	50	37	38	RECORD LENGTH CHANGED (12 sec)	
300012	14 09 51	0064	3330	12	21	8	4	46	37	35	50	37	38	TAPE ERROR	
300012	14 35 33	0166	3432	12	21	8	4	45	37	34	49	38	38	MID TAPE	
300012	15 17 03	0256	3522	12	21	8	4	46	35	34	48	36	37	END TAPE	
300013	15 17 24	0257	3523	12	21	8	4	46	35	34	48	36	37	START TAPE	
300013	15 54 09	0362	3628	12	21	8	4	46	35	34	49	37	37	MID TAPE	
300013	16 12 01	413	3679	12	21	8	4	45	33	31	48	37	35	Bad shot	
300013	16 27 03	456	3722	12	21	8	4	45	32	30	46	36	34	END TAPE	
300014	16 27 24	457	3723	12	21	8	4	45	32	30	46	36	34	START TAPE	
300014	17 01 41	0555	3821	12	21	8	4	45	32	31	47	36	35	MID TAPE	
300014	17 37 03	657	3923	12	21	8	4	45	33	32	47	36	36	END TAPE	
300015	17 37 03	658	3924	12	21	8	4	45	33	32	47	36	36	START TAPE	
300015	18 12 03	756	4022	12	21	8	4	45	33	31	47	36	35	MID TAPE	
300015	18 47 24	856	4095	12	21	8	4	45	33	32	47	37	36	END TAPE	
300016	18 47 24	857	4096	12	21	8	4	45	33	32	47	37	36	START TAPE	
300016	19 22 45	0555	4055	12	21	8	4	46	35	34	47	38	37	Mid Tape	

CRUISE FM30

LINE SC67 B

PROJECT Student Cruise UT

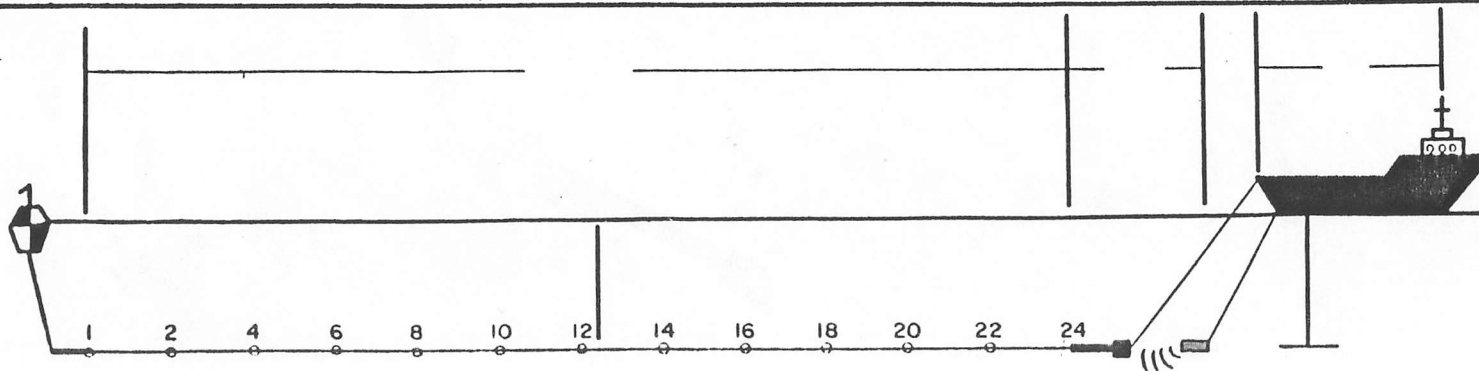
DATE 144 May 24 '85

REEL NUMBER	TIME	SHOT #	RECORD #	REC LEN	REP. RATE	FLD	Shot Intvl	STREAMER DPTH				WATER DEPTH		REMARKS	OB init.
300016	19:57:17	1056	4095	12	21	8	4							End of Reel	
300017	19:57:37	1057	4095	12	21	8	4	45	35	33	47	32	37	Start of Reel	
300017	20:33:05	1159	0070	12	21	8	4	48	39	33	50	39	42	Midreel	
300017	21:07:16	1256	0167	12	21	8	4	53	45	42	55	41	45	End of reel	
300018	21:07:37	1257	0168	12	21	8	4	53	45	42	55	40	45	Start of reel	sc
300018	21:42:24	1358	0269	12	21	8	4	56	46	42	54	40	44	Mid reel	pc
300018	21:44:44	1363	0274	12	21	8	4	55	45	42	54	40	44	Tape error	rc
300018	22:03:37	1417	0328	12	21	8	4	54	45	43	55	40	45	Tape error	ss
300018	22:10:58	1438	0349	12	21	8	4	54	45	42	55	40	44	Tape error	ss
300018	22:17:02	1456	0367	12	21	8	4	54	45	42	54	40	43	end of reel	
300019	22:17:17	1456	0367	12	21	8	4	52	44	40	54	40	45	Begin reel	
300019	22:17:37	1457	0369	12	21	8	4	52	44	40	54	40	45	Tape error	
300019	22:18:19	1459	0370	12	21	8	4	52	44	40	54	40	45	Tape error	
300019	22:19:01	1461	0372	12	21	8	4	52	44	40	54	40	45	Tape error	
300019	22:50:17	1551	0462	12	21	8	4	54	45	41	53	38	42	Mid reel	ss
300019	23:14:27	1621	0531	12	21	8	4	52	45	42	55	40	46	Tape error	js
300019	23:27:03	1656	0567	12	21	8	4	52	45	42	55	40	43	End reel	js

[illegible]

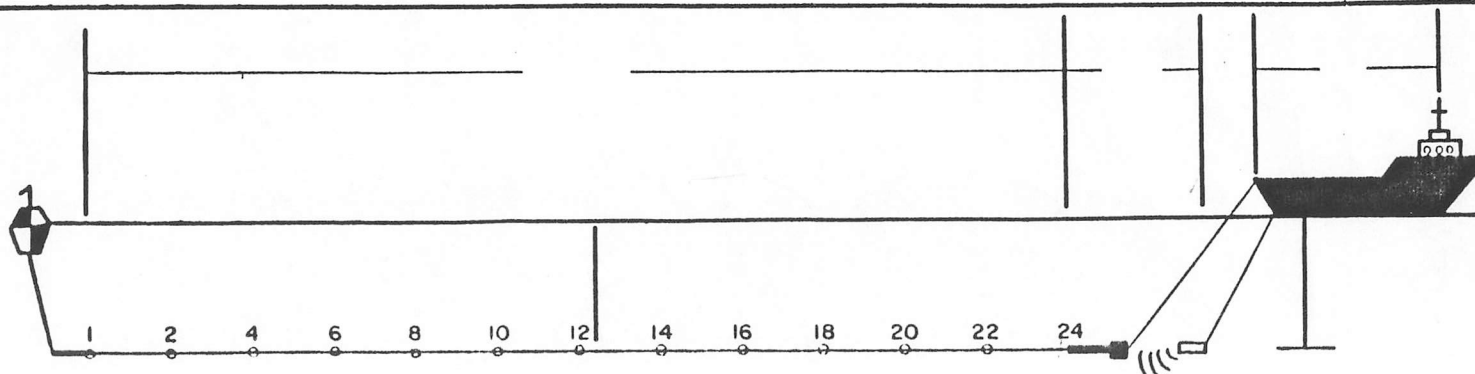


CRUISE <u>FM 30</u> <u>074653 (2079)</u>	LINE <u>SC 68</u>
START TIME <u>014710</u> <u>25 59 76 N</u> START LAT. <u>25 59 70 N</u> <u>94 30 04 W</u> START LONG. <u>94 30 00 W</u> SHOT <u>2079</u>	END TIME <u>03:20:10</u> <u>last shot 3403</u> ENDING LAT. <u>26 01 81 N</u> ENDING LONG. <u>94 34 09 W</u> SHOT <u>2390</u>
SOURCE <u>1 air gun 2000 psi</u> SOURCE DEPTH <u>1 water gun</u>	SOURCE CAPACITY <u>2000 air</u> <u>+ 80 water</u>
NO. OF TRACES <u>24</u> NEAR TRACE <u>24</u>	GROUP INTERVAL <u>30.5 m</u> FAR TRACE <u>1</u>
INSTRUMENT FILTERS: <u>LOW 8</u> <u>HIGH 124</u> <u>NOTCH</u>	GAIN MODE <del>SLOPE</del> <del>SLOPE</del> <del>SLOPE</del>
DATA LENGTH MIN. <u>10</u> MAX. <u>12</u> SAMPLE RATE <u>2 ms</u> <u>repeats 18 sec</u> NOMINAL FOLD?	
REMARKS	



[illegible]

CRUISE <u>FM 30</u>	LINE <u>SC 69</u>
START TIME <u>03:20:44</u> START LAT. <u>26 01.89 N</u> START LONG. <u>94 34.08 W</u> <u>SHOT 2391</u>	END TIME <u>08:24:04</u> ENDING LAT. <u>26 03.06</u> ENDING LONG. <u>94 10.34</u> <u>SHOT 3403</u>
SOURCE <u>1 Airgun; 1 watergun</u> SOURCE DEPTH	SOURCE CAPACITY <u>2000 psi. air</u> <u>80 water</u>
NO. OF TRACES <u>24</u> NEAR TRACE <u>24</u>	GROUP INTERVAL <u>30.5m</u> FAR TRACE <u>#1</u>
INSTRUMENT FILTERS: <u>LOW 8</u> <u>HIGH 124</u> <u>NOTCH</u>	GAIN MODE <u>SLOPE</u> <u>SLOPE</u> <u>SLOPE</u>
DATA LENGTH <u>MIN. MAX.</u> NOMINAL FOLD <u>9-10</u> <u>12 sec</u>	SAMPLE RATE <u>2ms</u> <u>Speed ~ 4.2</u> <u>repetition rate 18 sec</u>
REMARKS	

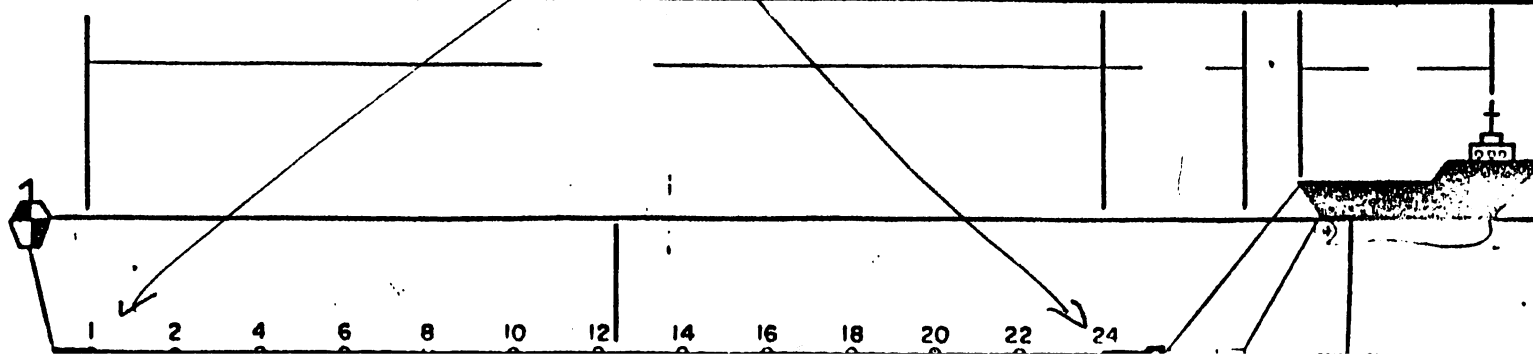


REEL NUMBER	TIME	SHOT #	RECORD #	REC LEN	REP RATE	FLD	SOM Per Dye	STREAMER DPTH				WATER DEPTH		REMARKS	OB init.
300024	03:20:44	2391	1302	12	18	8	2	45	35	35	47	36	35	New Line (SC 69) 1st SHOT	
300024	03:27:04	2413	1324	12	18	8	2	46	35	35	49	36	35	End Reel	
300025	03:27:21	2414	1325	12	18	8	2	46	35	35	49	36	35	START Reel	
300025	03:45:57	2476	1387	12	18	8	2	46	35	35	48	38	37	MID Reel	TM
300025	04:01:48	2529	1439	12	18	8	2	46	35	35	49	37	37	END REEL	TM
300026	04:01:48	2530	1440	12	18	8	2	46	35	35	49	37	37	START REEL	TM
300026	04:21:40	2525	1506	12	18	8	2	46	36	35	49	36	36	MID REEL	
300026		2641- 2645												ALMOST CRASH LAST SHOTS LAST	
300027	04:37:12	2646	1557	12	18	8	2							START TAPE	
300027	5 09 36	2754	1665	12	18	8	2	46	37	35	47	36	35	END TAPE	
300028	5 09 36	2754	1665	12	18	8	2	46	37	35	47	36	35	BEGIN TAPE	
300028	5.26:10	2810	1721	12	18	8	2	46	36	35	49	38	36	MID TAPE	
300028	5 42 36	2864	1775	12	18	8	2	45	37	35	48	35	34	END TAPE	
300029	5 42 56	2865	1776	12	18	8	2	45	37	35	48	35	34	BEGIN TAPE	
300029	6 01 34	2928	1839	12	18	8	2	46	37	36	50	37	37	~MID TAPE	
300029	6 15 36	2974	1885	12	18	8	2	45	35	35	49	36	38	END TAPE	
300030	6 15 56	2975	1886	12	18	8	2	45	35	35	49	36	38	START TAPE	

[illegible]



CRUISE FM 30	LINE SC 70
START TIME 09:12:16 START LAT. 26° 06' 02" START LONG. 94° 10' 37" <i>1<sup>st</sup> SHOT 2</i> <i>rec. 2</i>	END TIME 18:00:00 ENDING LAT. 26° 6' 87" ENDING LONG. 94° 50' 92" <i>LAST shot 1512</i>
SOURCE 2 2000 psi air guns SOURCE DEPTH 35'	SOURCE CAPACITY 4000 cu. ft.
NO. OF TRACES 24 NEAR TRACE = #24	GROUP INTERVAL 30 meters FAR TRACE = #1
INSTRUMENT FILTERS: LOW 8 HIGH 62 <del>NOTCH</del>	GAIN MODE <del>SLOPE</del> <del>SLOPE</del> <del>SLOPE</del>
DATA LENGTH MIN. 12 MAX. NOMINAL FOLD 8	SAMPLE RATE 4 ms 21 sec rep rate. Speed 4.2 kt.
REMARKS	

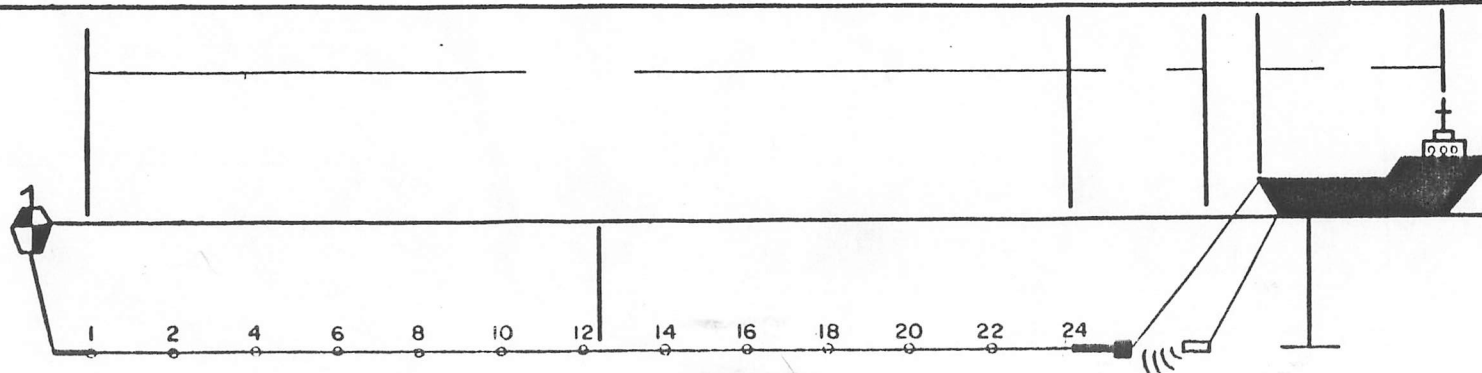


REEL NUMBER	TIME	SHOT #	RECORD #	REC LEN	REP RATE	FLD	Sample Intake	STREAMER DPTH				WATER DEPTH		REMARKS	OB init.
300034	09:12:16	0002	0002	12	21	8	4	46	33	33	47	36	34	BEGIN TAPE	
300034	9:50:46	0112	0112	12	21	8	4	50	43	42	54	39	44	MID-TAPE	
300034	10:29:30	0223	0223	12	21	8	4	54	46	45	55	40	45	END TAPE	
300034	10:30:32	0225	0225	12	21	8	4	54	46	45	55	40	45	ACTIVE REEL OFFLINE 0224-0225 MISSED	
300035	10:50:39	0226	0226	12	21	8	4	53	44	43	54	39	46	BEGIN TAPE	
300035	11:19:40	0365	0365	12	21	8	4	55	49	47	59	42	46	Mid Tape	
300035	11:49:58	423	423	12	21	8	4	55	47	47	58	40	45	End Reel	J
300036	11:40:19	424	424	12	21	8	4	55	47	47	58	40	45	New reel	J
300036	12:15:18	524	524	12	21	8	4	49	41	40	50	37	40	Mid Reel	
300036	12:49:58	624	624	12	21	8	4	50	42	41	51	37	40	End Reel	
300037	12:50:19	625	625	12	21	8	4	50	42	41	51	37	40	New reel	J
300037	13:24:58	724	724	12	21	8	4	50	43	42	53	38	42	Mid reel	J
300037	14:00:19	825	825	12	21	8	4	48	40	40	52	37	40	END Reel	
300038	14:00:40	826	826	12	21	8	4	48	40	40	52	37	40	START Reel	
300038	14:10:49	855	855	12	21	8	4	49	40	40	52	36	40	TOO MANY ERRORS END REEL	
300039	14:11:10	856	856	12	21	8	4	49	40	40	52	36	40	START REEL	
300039	14:45:07	953	953	12	21	8	4	46	36	35	48	45	37	MIDTAPE	

\* only 30 shots because every other shot was bad (tape errors)

[illegible]

CRUISE FM 30	LINE SC 71
START TIME 18:00:14 1st shot START LAT. 26° 6' 87 1513 START LONG. 94° 50' 92 25 May 85	END TIME 7:32:34 last shot ENDING LAT. 26 59.54 N 3920 ENDING LONG. 94 21.89 W 26 May 85
SOURCE 2 - 2000 psi air guns SOURCE DEPTH 35 feet	SOURCE CAPACITY 4000 in <sup>3</sup>
NO. OF TRACES 24 NEAR TRACE 24	GROUP INTERVAL 30.5 meters FAR TRACE 1
INSTRUMENT FILTERS: LOW 8 HIGH 62 NOTCH	GAIN MODE SLOPE ✓ SLOPE SLOPE
DATA LENGTH MIN. 12 MAX. NOMINAL FOLD 8	SAMPLE RATE 4 ms speed 4.2
REMARKS	



CRUISE 30

LINE SC 71

PROJECT Student Cruise VII

DATE 145 May 28 '88

REEL NUMBER	TIME	SHOT #	RECORD #	REC LEN	REP RATE	FLD	SAMPLE INTERVAL	STREAMER DPTH				WATER DEPTH		REMARKS	OB init.
300042	18:10:14	1539	1539	12	21	8	4	47	37	34	47	36	39	Mid reel	
300042	18 45 26	1639	1639	12	21	8	4	46	35	35	50	37	39	END TAPE	
300043	18 45 47	1640	1640	12	21	8	4	46	35	35	50	37	39	START TAPE	
300043	19 20 12	1735	1735	12	21	8	4	47	37	36	50	37	40	Mid tape	
300043	19:55:34	1835	1835	12	21	8	4	47	39	36	51	35	40	END Tape	
300044	19:55:55	1840	1840	12	21	8	4	47	39	36	51	35	40	New Tape	
300044	20:30:34	1940	1940	12	21	8	4	47	39	36	50	38	39	Mid reel record	
300044	21:05:13	2040	2040	12	21	8	4	47	37	35	50	38	40	End Reel	
300045	21:09:04	2054	2054	12	21	8	4	47	37	35	50	38	40	300045 Crashed Therefore, went to reel 300046 new reel	
300045	21:48:58	2164	2164	12	21	8	4	47	37	35	47	36	37	mid reel	
300045	22:11:07	2227	2227	12	21	8	4	53	45	41	53	37	41	Back to 2 guns	
300045	22:20:27	2253	2253	12	21	8	4	45	34	32	47	37	37	End Reel	
300046	22:20:28	2254	2254	12	21	8	4	45	34	32	47	37	37	New Reel	
300046	22:55:28	2354	2354	12	21	8	4	47	40	36	50	37	40	mid reel	
300046	23:30:07	2453	2453	12	21	8	4	45	34	32	47	37	37	end reel	
300047	23:30:28	2454	2454	12	21	8	4	45	34	32	47	37	37	New reel	
300047	00:05:07	2553	2553	12	21	8	4	45	33	32	48	37	37	Mid reel	

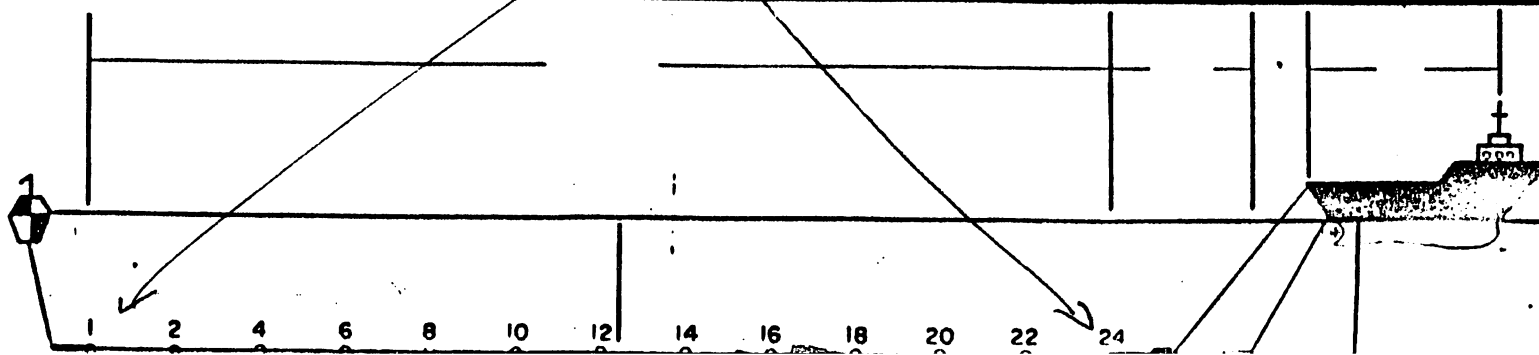


CRUISE 30LINE SC 71PROJECT Student Cruise VIIDATE 146 March '85

REEL NUMBER	TIME	SHOT #	RECORD #	REC LEN	REP. RATE	FLD	Sample Int. Vol	STREAMER DPTH				WATER DEPTH		REMARKS	OB init.
300047	00:38:22	2648	2648	12	21	8	4 <sub>ms</sub>	45	35	33	48	37	37	END TAPE	
300048	00:38:42	2649	2649	12	21	8	4	45	35	33	48	37	37	NEW TAPE	7
300048	01:22:01	2773	2773	12	21	8	4	45	36	34	50	38	40	Mid reel	25
300048	01:48:43	2849	2849	12	21	8	4	46	39	35	50	37	37	End Reel	
300049	01:49:04	2850	2850	12	21	8	4	46	39	35	50	37	37	Start Reel	
300049	02:23:22	2948	2948	12	21	8	4	46	39	35	49	36	38	Mid Reel	
300049	02:58:43	3048	3048	12	21	8	4	45	35	34	50	38	39	End Reel	
300050	02:59:04	3049	3049	12	21	8	4	45	35	34	50	38	39	Start Reel	
300050	03:33:43	3149	3149	12	21	8	4	46	36	35	48	37	37	MID REEL	
300050	04:07:28	3243	3243	12	21	8	4	45	35	34	48	37	39	END REEL	
300051	04:08:01	3244	3244	12	21	8	4	45	35	34	48	37	39	Start Reel	
300051	04:54:36	3379	3379	12	21	8	4	46	36	35	49	37	39	Mid Reel	
300051	05:16:50	3443	3443	12	21	8	4	46	37	35	49	37	39	END TAPE	
300052	05:17:11	3444	3444	12	21	8	4	46	37	35	49	37	39	START TAPE	
300052	05:52:19	3445	3445	12	21	8	4	47	37	35	48	36	37	MID TAPE	
300052	06:26:51	3643	3643	12	21	8	4	46	36	35	48	36	38	End	
300053	06:26:58	3644	3644	12	21	8	4	46	36	35	48	36	38	START	

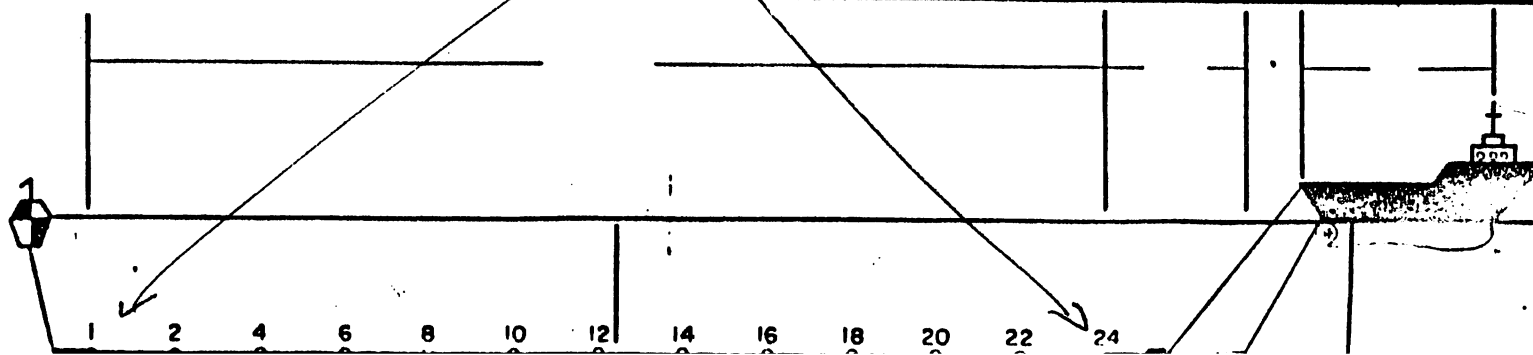
[illegible]

CRUISE	FM 30	LINE	SC-72
START TIME	8:03:34	SHOT	3920
START LAT.	26 59.53N	END TIME	10:32:41
START LONG.	94 21.90W	ENDING LAT.	26 56.10N
		ENDING LONG.	94 33.70W
SOURCE	2 - 2000 psi	SOURCE CAPACITY	4000 in <sup>3</sup>
SOURCE DEPTH	35 ft.		
NO. OF TRACES	24	GROUP INTERVAL	30 meters
NEAR TRACE = #	24	FAR TRACE = #	1
INSTRUMENT FILTERS:	LOW 8 HIGH 69 NOTCH	GAIN MODE	SLOPE SLOPE SLOPE
DATA LENGTH	MIN. 10 MAX.	SAMPLE RATE	4 ms
NOMINAL FOLD	8		rep rate 21 s.
			speed 4.1 kt.
REMARKS			





CRUISE	Fm 30	LINE	SC-73
START TIME	10:33:01 SHOT 434	END TIME	18:43:01.28 SHOT 5751
START LAT.	26 56.10N	ENDING LAT.	26.57 14
START LONG.	94 33.70W	ENDING LONG.	93 53 09
SOURCE	2 - 2000 ps.	SOURCE CAPACITY	4000 cin.
SOURCE DEPTH	35 ft.		
NO. OF TRACES	24	GROUP INTERVAL	30 meters
NEAR TRACE = #	24	FAR TRACE = #	1
INSTRUMENT FILTERS:	LOW 8 Hz HIGH NOTCH 62 Hz	GAIN MODE	SLOPE SLOPE SLOPE
DATA LENGTH MIN.		SAMPLE RATE	4 ms.
NOMINAL FOLD	8		Speed 4.1
REMARKS			





CRUISE FM 30LINE SC-73PROJECT Student Cruise VII

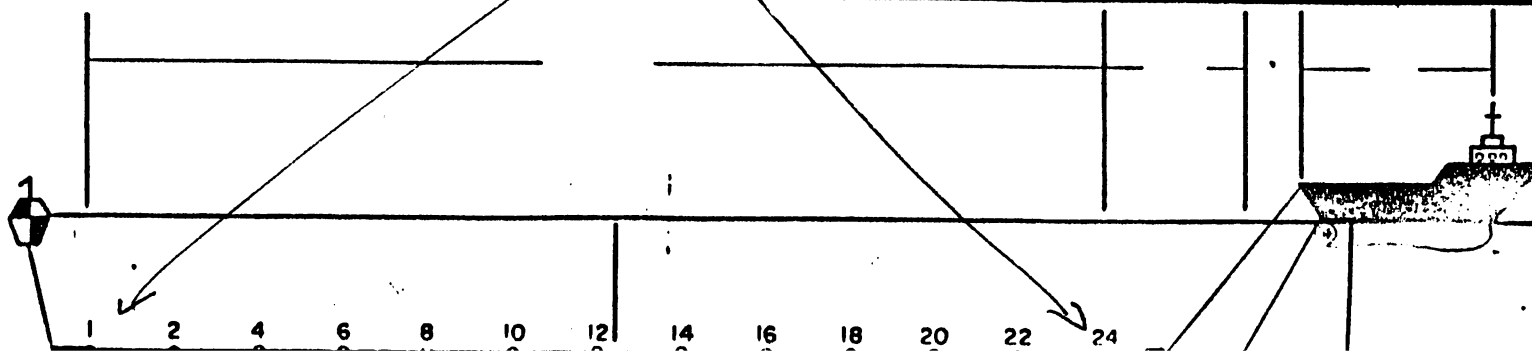
DATE \_\_\_\_\_

REEL NUMBER	TIME	SHOT #	RECORD #	REC LEN	REP. RATE	FLD	SAMPLE LEN	STREAMER DPTH				WATER DEPTH		REMARKS	OB init.
300056	11:03:19	4433	4095	10	21	8	4	47	38	39	52	39	40	END of Reel	
300057	11:03:39	4434	4095	10	21	8	4	47	38	39	52	39	40	START of Reel	
300057	11:38:07	4533	4095	10	21	8	4	46	38	38	49	38	40	Mid reel	RC
300057	12:13:07	4632	4095	10	21	8	4	46	37	36	50	37	38	End reel	JF
300058	12:13:28	4634	4095	10	21	8	4	46	37	36	50	37	38	New reel	JF
300058	12:48:07	4733	4095	10	21	8	4	46	35	35	49	37	40	Mid reel	JF
300058	13:23:07	4833	4095	10	21	8	4	47	37	38	50	38	39	End reel	JF
300059	13:23:28	4834	4095	10	21	8	4	47	37	38	50	38	39	New reel	
300059	13 57:56	4932	4095	10	21	8	4	47	37	37	50	38	39	Mid reel	
300059	14 35:14	4998	4095	10	21	8	4	47	37	37	50	38	39	End Reel	
300060	14 35:35	4999	4095	10	21	8	4	47	39	38	52	38	40	New Reel	
300060	15 06:43	5129	4095	10	21	8	4	46	37	36	50	38	39	Mid Reel	TM
300060	15 41:22	5228	4095	10	21	8	4	45	33	33	48	37	36	End Reel	
300061	15 41:43	5229	4095	10	21	8	4	45	33	33	48	37	36	Start Reel	
300061	16 16:22	5328	4095	10	21	8	4	45	35	35	49	38	37	Mid Reel	TM
300061	16 51:33	5428	4095	10	21	8	4	45	34	33	47	36	35	END TAPE	
300062	16 51:54	5429	4095	10	21	8	4	45	34	33	47	36	35	START TAPE	

10  
56 24 51

[illegible]

CRUISE <u>FM 30</u>	LINE <u>SC 74</u>
START TIME <u>18:45:21</u> START LAT. <u>26:57.21</u> START LONG. <u>93 59.19</u>	END TIME <u>23:49:51</u> <u>26 May 85</u> SHOT <u>7060</u> ENDING LAT. <u>26:58.44</u> ENDING LONG. <u>94 21.59</u>
SOURCE <u>21 Airguns + 1 water gun</u> SOURCE DEPTH <u>35 ft</u>	SOURCE CAPACITY <u>2000</u> <u>in<sup>3</sup></u> + <u>80 cu in.</u>
NO. OF TRACES <u>24</u> NEAR TRACE = # <u>24</u>	GROUP INTERVAL <u>30<sup>5</sup> meters</u> FAR TRACE = # <u>1</u>
INSTRUMENT FILTERS: <u>LOW 8 Hz</u> <u>HIGH 124 Hz</u> <u>NOTCH</u>	GAIN MODE <u>SLOPE</u> <u>SLOPE</u> <u>SLOPE</u>
DATA LENGTH MIN. <u>10 sec.</u> MAX. <u>8</u> NOMINAL FOLD <u>12</u> <u>fold</u>	SAMPLE RATE <u>2 ms</u> speed <u>4.2</u> shot dist. <u>~ 30.1 m</u> Rep Rate: <u>14</u>
REMARKS	



REEL NUMBER	TIME	SHOT #	RECORD #	REC LEN	REP RATE	FLD	WIND DIR	STREAMER DPTH				WATER DEPTH		REMARKS	OB init.
								1	2	3	4	5	6		
300063	18:42:40	5755 <del>5746</del>	128 <del>129</del>	8	14	12	2	45	33	33	49	37	37	First shot SC 74 Mid reel	
300063	19:01:50	5825	198	8	14	12	2	53	45	44	56	41	44	END REEL	
300064	19:01:51	5826	199	8	14	12	2	53	45	44	56	41	44	BEGIN REEL	
300064	19:27:49	5937	0310	8	14	12	2	55	48	46	59	41	47	MID REEL	
300064	19:42:17	5999	0372	8	14	12	2	56	50	48	60	41	46	END REEL	
300065	19:42:26	6000	0373	8	14	12	2	56	50	48	60	41	46	BEGIN REEL	
300065	20:01:24	6093	0466	8	14	12	2	55	48	45	56	40	45	MID REEL	
300065	20:19:18	6157	0530	8	14	12	2	55	48	45	60	42	48	END REEL	
300066	20:27:20	6158	0531	8	14	12	2	55	48	45	60	42	48	BEGIN REEL	
300066	20:42:29	6257	0630	8	14	12	2	66	57	53	64	42	48	MID REEL	
* 300066	21:00:08	6331 <del>6332</del>	704 <del>705</del>	8	14	12	2	59	52	49	58	40	47	Drive A ran tape off the reel. It did not see an end of tape mark	
300067	21:00:09	6333	706	8	14	12	2	59	52	49	58	40	47	Begin Reel	
300067	21:21:13	6423	0796	8	14	12	2	52	45	42	55	40	45	Mid reel	
300064	has problems - SEGDOC indicated numerous blank spots (error message - 56)														
ON SEGDOC	it ran off the reel: end of tape TAPE (following rewind) lead to 2 messages for each shot - over														
300067		6504	0877	8	14	12	2							END REEL	
300067	21:40:07	6504	0877					changed automatically but went into crash mode.					last shot - Tried to		

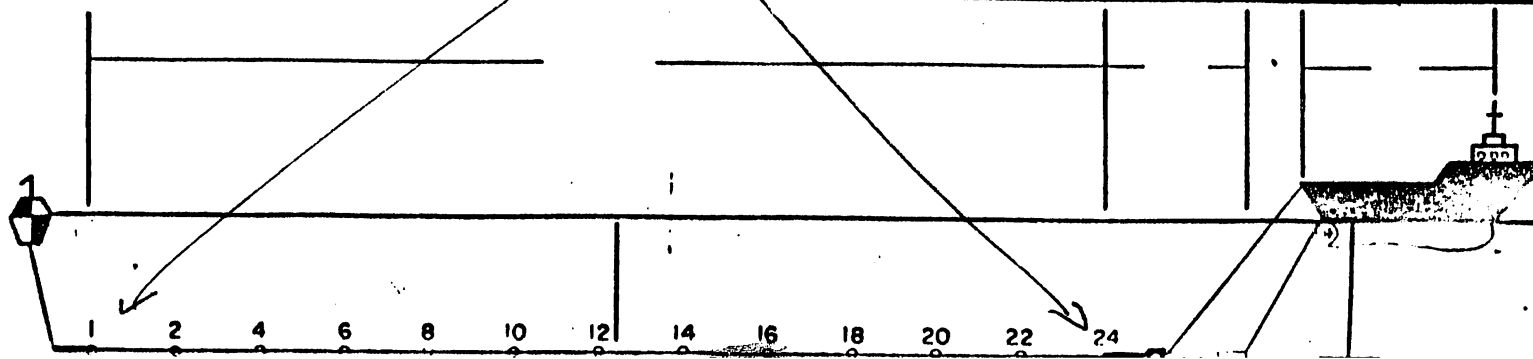
From Drive B on C PLT.

From SEGDOC NOTE

REEL NUMBER	TIME	SHOT #	RECORD #	REC LEN	REP. RATE	FLD	Sample Rate	STREAMER DPTH				WATER DEPTH	REMARKS	OB init.
300068	21:46:54	6533	0906	8	14	12	2ms					5 / 2	19 SHOTS LOST on CRASH TRY	
300068	22:10:14	6633	1006	8	14	12	2	57	62	50	63	43 49	mid tape	
300068	22:21:39	6682	1055	8	14	12	2	62	54	50	57	42 46	end tape	
300069	22:21:53	6683	1056	8	14	12	2	62	54	50	57	42 46	begin	
300069	22:39:37	6759	1132	8	14	12	2	58	50	45	55	40 46	mid reel	
300069	22:56:39	6832	1205	8	14	12	2	57	50	46	57	41 46	end reel	
300070	22:56:53	6833	1206	8	14	12	2	57	50	46	57	41 46	begin reel	
300070	23:14:23	6908	1281	8	14	12	2	60	54	50	58	42 45	mid reel	
300070	23:31:48	6982	1355	8	14	12	2	62	55	56	58	40 45	end reel	
300071	23:31:49	6982	1355	8	14	12	2	62	55	56	58	40 45	begin reel	PC
300071	23:49:52	<del>7060</del> 7061	<del>1432</del> 1433	8	14	12	2	50	42	39	51	40 44	Sc 74 Mid reel	PC



CRUISE FM 30	LINE SC 75
START TIME 23:50:05 Shot 7061 START LAT. 26 58.46 START LONG. 94 21.59	END TIME 6:13:58 13 SHOT 8703 ENDING LAT. 27° 21.93 ENDING LONG. 94° 07.17
SOURCE / airgun / watergun SOURCE DEPTH 35' & 10'	SOURCE CAPACITY air 2000 cu in water 80 cu in
NO. OF TRACES 24 NEAR TRACE = #24	GROUP INTERVAL 30 meters FAR TRACE = #1
INSTRUMENT FILTERS: LOW 8 HIGH 124 NOTCH	GAIN MODE <del>SLOPE</del> <del>SLOPE</del> <del>SLOPE</del>
DATA LENGTH MIN. 8 MAX. NOMINAL FOLD 12	SAMPLE RATE 2 ms nom. speed 4.2 sec. shot dist 30.1 m rep rate 14
REMARKS	



CRUISE FM 30

LINE SC-75

PROJECT

Student Cruise VII

DATE 26-May 85 - 27<sup>th</sup>

REEL NUMBER	TIME	SHOT #	RECORD #	REC LEN	REP RATE	FLD	<i>500</i> S	STREAMER DPTH				WATER DEPTH		REMARKS	OB init.
300071	23:50:05	7061	1433	8	14	12	2	50	42	39	51	40	44	mid reel	Re
300071	00:06:48	7132	1505	8	14	12	2	55	50	45	56	39	45	end reel	Re
300072	00:06:49	7132	1505	8	14	12	2	55	50	45	56	39	45	begin tape	Re
300072	00:26:15	7216	1589	8	14	12	2	56	50	47	58	41	46	mid reel	SS
300072	00:41:53	7283	1658	8	14	12	2	50	43	40	52	38	42	end reel	Re
300073	00:41:53	7283	1656	8	14	12	2	50	43	40	52	38	42	begin reel	Re
300073	00:59:34	7358	1731	8	14	12	2	49	44	41	55	40	42	mid reel	SS
300073	01:16:32	7432	1805	8	14	12	2	50	42	40	55	40	42	End reel	JT
300074	01:16:53	7433	1806	8	14	12	2	50	42	40	55	40	44	START Reel	JT
300074	01:35:47	7514	1887	8	14	12	2	51	45	42	54	38	43	Mid Reel	JT
300074	01:51:48	7582	1955	8	14	12	2	53	46	43	56	39	45	END TAPE	KW
300075	01:52:02	7583	1956	8	14	12	2	53	46	43	56	39	45	START TAPE	KW
300075	02:10:33	7663	2036	8	14	12	2	52	45	42	54	39	43	mid reel	MSR
300075	02:26:39	7732	2105	8	14	12	2	57	50	46	58	42	42	End Reel	ST
300076	02:26:53	7733	2106	8	14	12	2	57	50	46	58	42	42	START Reel	ST
300076	02:53:57	7849	2222	8	14	12	2	54	48	45	58	40	45	Mid Reel	ST
300076	3:01:52	7882	2255	8	14	12	2	52	47	45	57	40	45	End Reel	ST

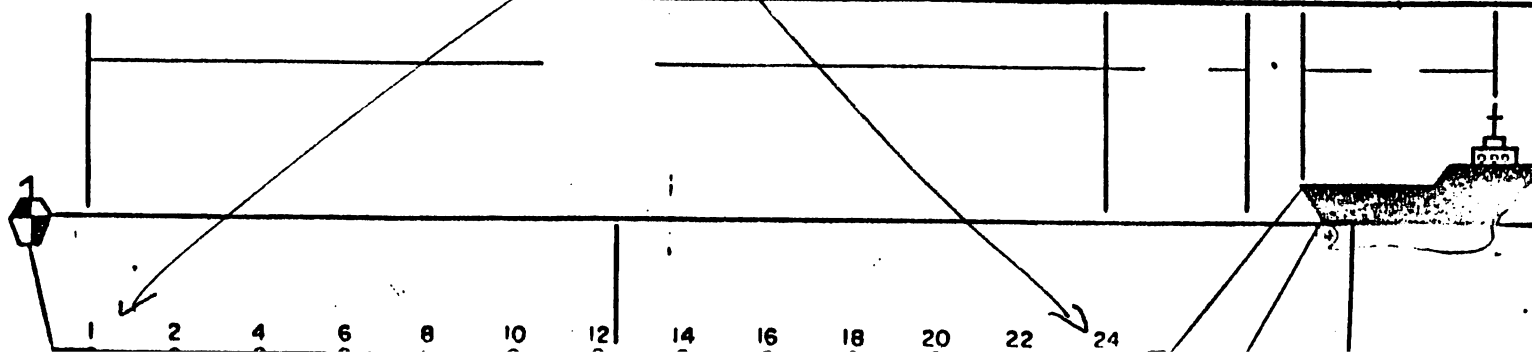
black

CRUISE FM 30 LINE SC-75PROJECT Student Cruise VIIDATE 147

REEL NUMBER	TIME	SHOT #	RECORD #	REC LEN	REP. RATE	FLD	SAMP INT (MS)	STREAMER DPTH				WATER DEPTH		REMARKS	OB init.
300077	3:02:02	7883	2256	8	14	12	2	52	47	45	57	40	45	START TAPE	
300077	3:20:33	7963	2336	8	14	12	2	50	45	43	55	40	45	MID TAPE	KW
300077	3:36:44	8032	2405	8	14	12	2	53	47	45	56	40	45	End Tape	
300078	3:36:53	8033	2406	8	14	12	2	53	47	45	56	40	45	New tape	UN
300078	3:48:12	8097	2470	8	14	12	2	54	47	45	56	40	45	Mid tape	
300078	3:51:49	8182	2555	8	14	12	2	56	50	46	57	40	45	End Tape	
300079	4:11:53	8183	2556	8	14	12	2	56	50	46	57	40	45	start Tape	
300079	4:30:33	8263	2636	8	14	12	2	52	48	47	59	40	45	Mid Tape	
300079	4:46:49	8332	2705	8	14	12	2	67	62	60	72	47	57	End Tape	
300080	4:47:02	8333	2706	8	14	12	2	67	62	60	72	47	57	Tape start	
300080	5:04:23	8408	2781	8	14	12	2	55	46	40	41	32	40	Mid tape	
300081	5:21:49	8482	2885	8	14	12	2	47	44	42	55	37	44	End tape	
300082	5:22:02	8483	2886	8	14	12	2	47	44	42	55	37	44	Start tape	
300082	5:41:29	8567	2940	8	14	12	2	58	48	41	50	35	40	Mid tape	
300082	5:56:49	8632	3005	8	14	12	2	45	45	37	50	35	41	END TAPE	
300083	5:56:53	8633	3006	8	14	12	2	45	45	37	50	35	41	start Tape	
	TO NEW LINE							SC-76							

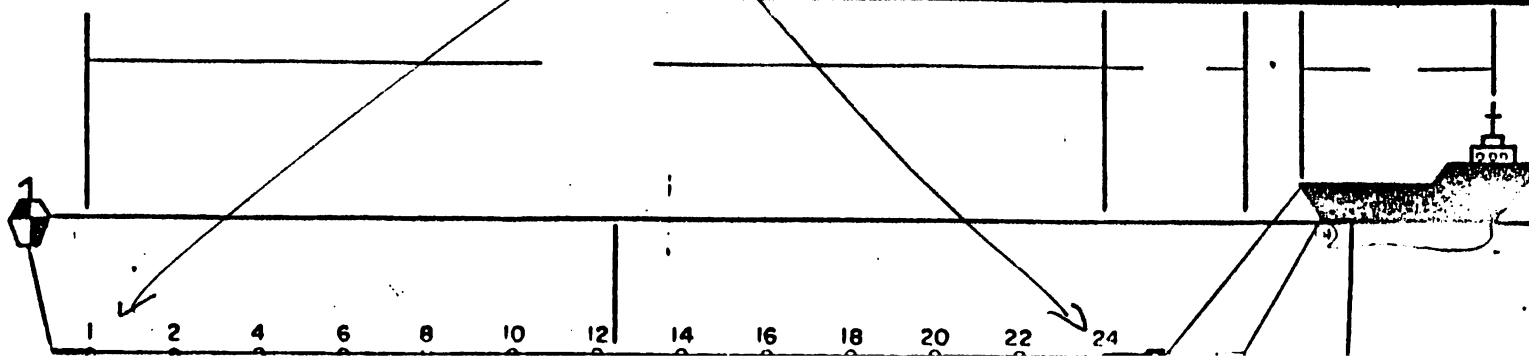
5:21:48

CRUISE FM 30	LINE SC 76
START TIME 06:14:57 SHOT 8711 START LAT. 27° 21.93 START LONG. 94° 07.17	END TIME 09:33:46 SHOT 9734 ENDING LAT. 29 35.32N ENDING LONG. 94 07.05W
SOURCE 1 Airgun 2000 psi SOURCE DEPTH 35 ft	SOURCE CAPACITY 2000 cu in
NO. OF TRACES 24 NEAR TRACE = #24	GROUP INTERVAL 30 meters FAR TRACE = #1
INSTRUMENT FILTERS: LOW 8 HIGH 62 <del>NOTCH</del>	GAIN MODE SLOPE SLOPE SLOPE
DATA LENGTH MIN. 8 MAX. NOMINAL FOLD 12 +	SAMPLE RATE rep rate 12 sec. 4 ms
REMARKS	



REEL NUMBER	TIME	SHOT #	RECORD #	REC LEN	REP. RATE	FLD	SAMP INT.	STREAMER DPTH				WATER DEPTH		REMARKS	OB init.
300082	06:14:57	8711	3082	8	12	8	4	43	35	33	45	34	38	MID TAPE	
300082	06:30:42	8789	3160	8	12	8	4	44	35	33	46	35	40	END TAPE	
300083	06:30:45	8790	3161	8	12	8	4	44	35	33	46	35	40	START TAPE	
300083	06:52:33	8899	3270	8	12	8	4	44	36	35	48	35	41	MID TAPE	
300083	07:15:25	9014	3385	8	12	8	4	45	37	36	48	37	42	END TAPE	
300084	07:15:45	9015	3386	8	12	8	4	45	37	36	48	37	42	START TAPE	
300084	07:44:21	9158	3529	8	12	8	4	47	41	39	50	37	44	MID TAPE	
300084	08:02:45	9250	3621	8	12	8	4	46	41	40	52	37	43	END TAPE	
30085	08:02:45	9250	3621	8	12	8	4	46	41	40	52	37	43	START TAPE	
30085	08:33:15	9403	3774	8	12	8	4	45	37	37	58	36	42	MID TAPE	
30085	08:49:33	9481	3855	8	12	8	4	48	42	39	52	36	42	END TAPE	
30086	08:49:45	9485	3856	8	12	8	4	48	42	39	52	36	42	START TAPE	
300084	09:13:09	9602	3973	8	12	8	4	47	40	38	50	36	42	MID TAPE	
300086	09:36:33	9719	4090	8	12	8	4	47	41	38	51	36	42	END OF TAPE	
300087	09:36:45	9720	4091	8	12	8	4	48	41	38	51	36	42	START TAPE	
300087	09:39:46	9740 9734	4095	8	12	8	4	47	42	37	47	34	38	DEMUXR STOPPED FOR DEPLOYMENT OF OBS	
	09:58	Shot	Se 76			12+		95	90	90	90	55	45	DEPTH GAUGE READING	

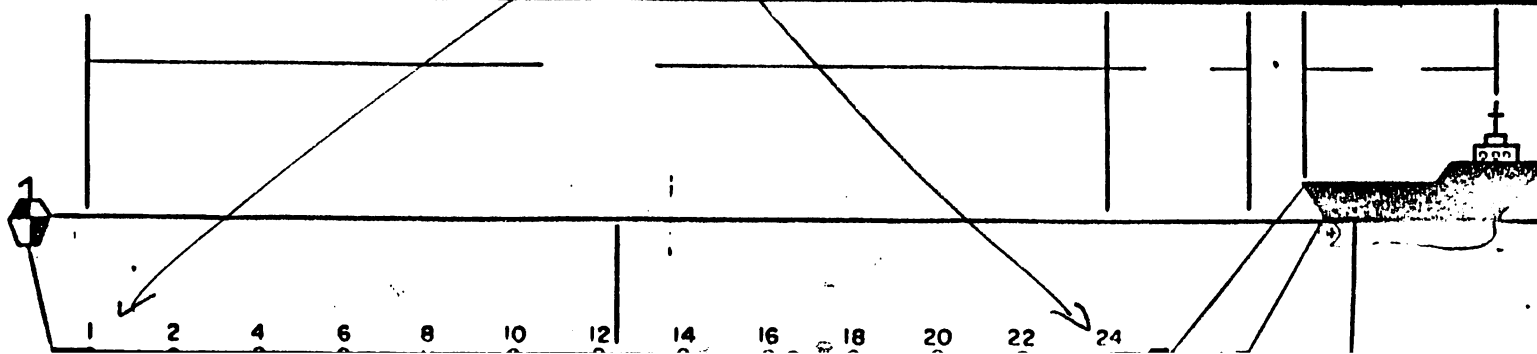
CRUISE FM 30	LINE SC-77
START TIME 10:08:54 SHOT 9743 START LAT. 27 37.63 N START LONG. 94 07.19 W	END TIME SHOT 0815 ENDING LAT. 27° 52.97' N ENDING LONG. 94° 08.62 W
SOURCE 1 AIR GUN SOURCE DEPTH 35'	SOURCE CAPACITY 2000 C.IN
NO. OF TRACES 24 NEAR TRACE = #24	GROUP INTERVAL 30 meters FAR TRACE = #1
INSTRUMENT FILTERS: LOW 8 HIGH 62 <del>NOTCH</del>	GAIN MODE <del>SLOPE</del> <del>SLOPE</del> <del>SLOPE</del>
DATA LENGTH MIN. MAX. NOMINAL FOLD 12+ 8 sec.	SAMPLE RATE 4ms 4.1 KNOTS rep. rate 12 sec.
REMARKS NOMINAL SHOT DISTANCE - 25.9 meters	



[illegible]



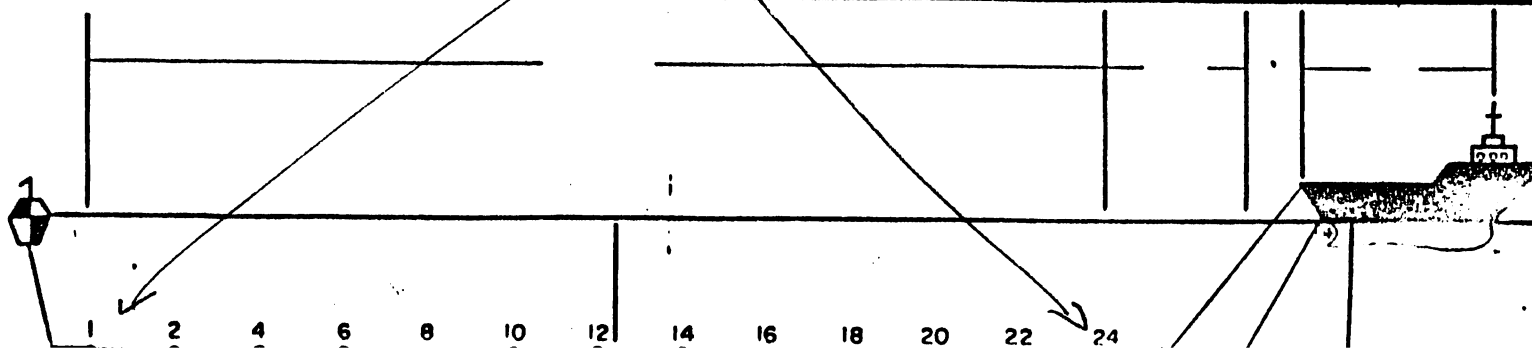
CRUISE FM 30	LINE SC-78
START TIME 14:12 SHOT 0002 START LAT. 27 50.98 START LONG. 94 05.67 27 May 85	END TIME 18:02:37 SHOT 0844 ENDING LAT. 27 48.38 ENDING LONG. 94 16.70
SOURCE 1 AIR GUN SOURCE DEPTH 35'	SOURCE CAPACITY 2000 cu. in.
NO. OF TRACES 24 NEAR TRACE = #24	GROUP INTERVAL 30 meters FAR TRACE = #1
INSTRUMENT AIR GUN FILTERS: LOW 8 HIGH 62 NOTCH	GAIN MODE IFP SLOPE SLOPE SLOPE
DATA LENGTH MIN. MAX. NOMINAL FOLD 12+ 8 SEC.	SAMPLE RATE 4 ms 12 sec mp rate
REMARKS	



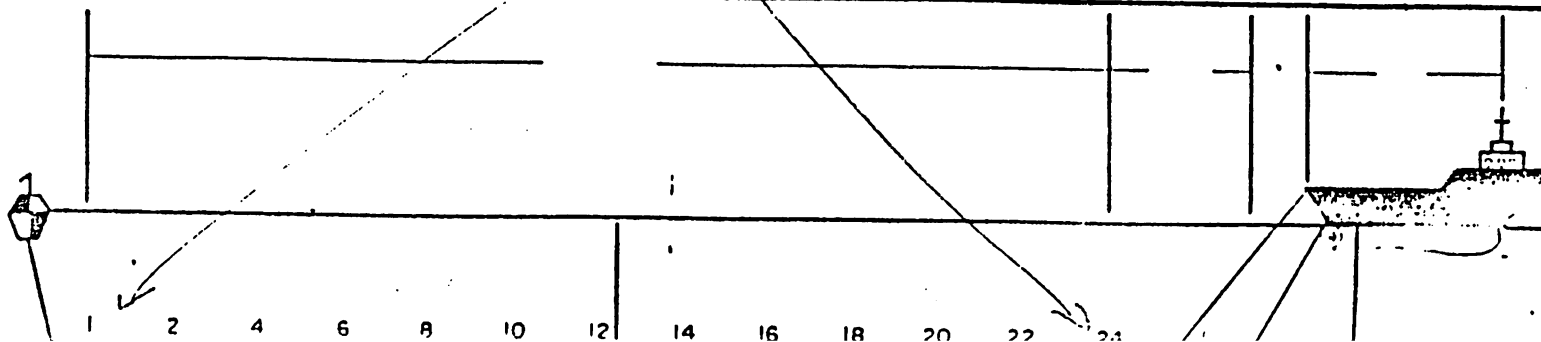




CRUISE FM 30	LINE SC-79 (with OBS)
START TIME 18:07:01 SHOT 856 START LAT. 27 48.08 N START LONG. 94 16.87 W	END TIME 00 18 40 SHOT 1863 ENDING LAT. 27 27 45 ENDING LONG. 93 58 15
SOURCE 2 AIR GUNS SOURCE DEPTH	SOURCE CAPACITY 2000 CU. IN. PER GUN
NO. OF TRACES 24 NEAR TRACE = #24	GROUP INTERVAL 30 meters FAR TRACE = #1
INSTRUMENT AIR GUN FILTERS: LOW 8 HIGH 62 <del>NOTCH</del>	GAIN MODE SLOPE SLOPE SLOPE
DATA LENGTH MIN. MAX. NOMINAL FOLD 17 8 SEC	SAMPLE RATE 4 MS Rep rate 22 sec.
REMARKS Shooting over 2 OBSs	



CRUISE FM 30	LINE SC-79 (with OBS)
START TIME 18:07:01 SHOT 856 START LAT. 27 48.08 N START LONG. 94 16.87 W	END TIME 00 18 40 SHOT 1863 ENDING LAT. 27 27 45 ENDING LONG. 93 58 15
SOURCE 2 AIR GUNS SOURCE DEPTH 10m	SOURCE CAPACITY 2000 CU. IN. PER GUN
NO. OF TRACES 24 NEAR TRACE = #24 178M from source	GROUP INTERVAL 30 meters FAR TRACE - #1 879.5 Meters from source
INSTRUMENT AIR GUN FILTERS: LOW 8 HIGH 62 <del>NOTCH</del>	GAIN MODE <del>SLOPE</del> <del>SLOPE</del> <del>SLOPE</del>
DATA LENGTH MIN. MAX. NOMINAL FOLD 17 8 SEC	SAMPLE RATE 4 MS Rep rate 22 sec.
REMARKS Shooting over 2 OBSs	Average SHOT DIST- 45M 15.25m CDP spacing





CRUISE FM 30 LINE SC-79 PROJECT

DATE 147 = May 27, '85

REEL NUMBER	TIME	SHOT #	RECORD #	REC LEN	REP. RATE	FLD ?	SPD ms	STREAMER DPTH				WATER DEPTH	REMARKS	OB init.	
<del>300094</del>	<del>18:03:04</del>			<del>8</del>	<del>22</del>	<del>12</del>	<del>4</del>						<del>START OF NEW</del>		
		18:05:49	DEMUX										would not go to next tape		
300094	18:07:01	0856	0856	8	22	12	4	45	33	30	47	37	36	START TAPE NEW LINE	
	shot point counter changed to match OBS														
	will be 0000 at 1800														
30094	18:49:23	9972	972	8	22	12	4	45	34	32	48	38	40	Midtape	
30094	19:51:10	0140	1140	8	22	12	4	47	37	35	50	38	40	END TAPE	
30095	19:51:21	0141	1141	8	22	12	4	47	37	35	50	38	40	START TAPE	
30095	20:41:57	0279	1279	8	22	12	4	45	35	32	48	37	38	MIDTAPE	
300095	21:28:31	406	1406	8	22	12	4	45	34	32	47	37	39	END TAPE	
300096	21:28:53	407	1407	8	22	12	4	45	34	32	47	37	39	START TAPE	
300096	22:17:38	0540	1540	8	22	12	4	57	51	47	57	40	45	Mid tape	
300096	23:06:02	0672	1672	8	22	12	4	47	42	40	54	40	40	END TAPE	
300097	23:06:25	0673	1673	8	22	12	4	47	42	40	54	40	40	BEGIN TAPE	
300097	23:54:04	0803	1803	8	22	12	4	48	40	36	51	38	42	MID	
300097	00:16:50	0863	1863	8	22	12	4	53	48	47	62	44	56	END	
								(QUIT)							