

# FM1501 – Student cruise

From DFS log,

Line	start time	end time	start shot	end shot	
10a	01:15:00	07:59:48	>4934	5957	
10b	08:12:12	12:28:36	5988	6631	
10c	12:29:00	15:38:28	6632	7111	
10d	15:39:00	00:28:48	7112	8453	Jan. 9-10

For stacked line 10c,

Shot#	CDP	Time	
2898	1	15:50:00	
4095	5429	23:38:55	
0001	5430	23:39:00	Jan. 09
0079	5788	00:09:54	Jan. 10

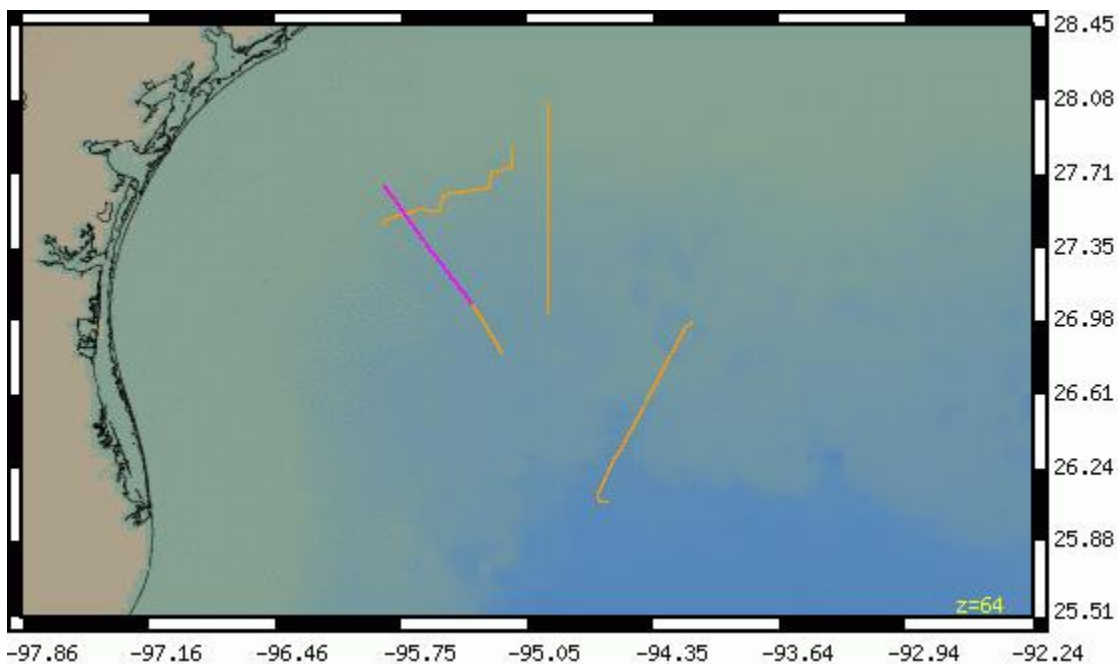
SEG Y shot files go from shot # 764 to 3974. The next file goes from 3986 to 3986. The last two shot files go from 4071 to 58 (roll-over of numbers from 4095 to 1).

From the SEG Y stacked files

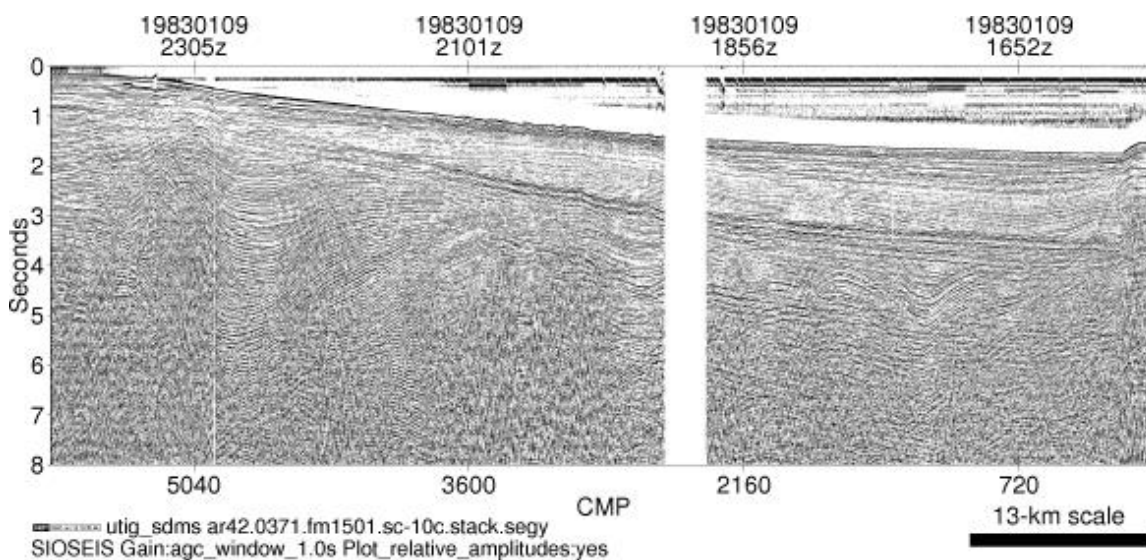
Line	start time	end time	start shot	end shot	start cdp	end cdp
10a						
10b	12:28:30	15:49:30	2390	2900	1	2213
10c	15:50:00	00:10:00	2898	79	1	5789
10d						

From fm1501.all.nav

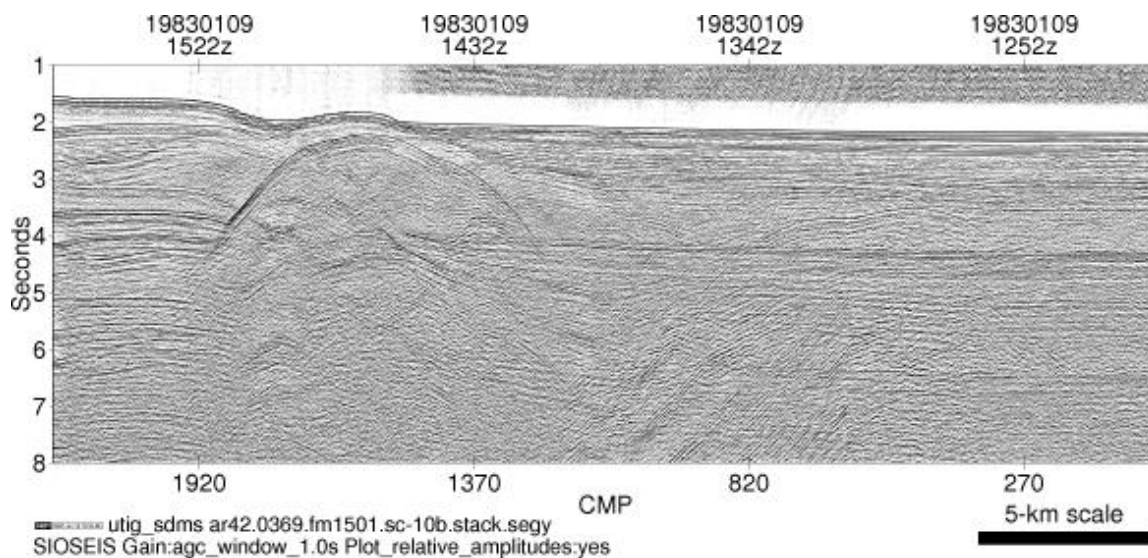
Shot#	Time	
4934	01:13:00	
5957	07:59:48	
5958	08:00:12	
6631	12:28:36	
6632	12:29:00	
7111	15:38:36	
7112	missing	
7113	15:39:00	
7455	17:53:48	
0	17:55:00	Jan. 9
...		
0	01:45:00	Jan. 10
...		
8654	01:49:24	Jan. 10



Above shows stacked data (not shot). Purple line is identified as line 10C. The image for 10C is below. Orange line to southeast is identified as 10B.



The time (1652z-2305z) on the image actually correlates with DFS log (page 14) where it indicates "SC10D" in blue pencil.



Above is line 10B. Time (1252z-1522z) correlates with what DFS log calls line 10C.