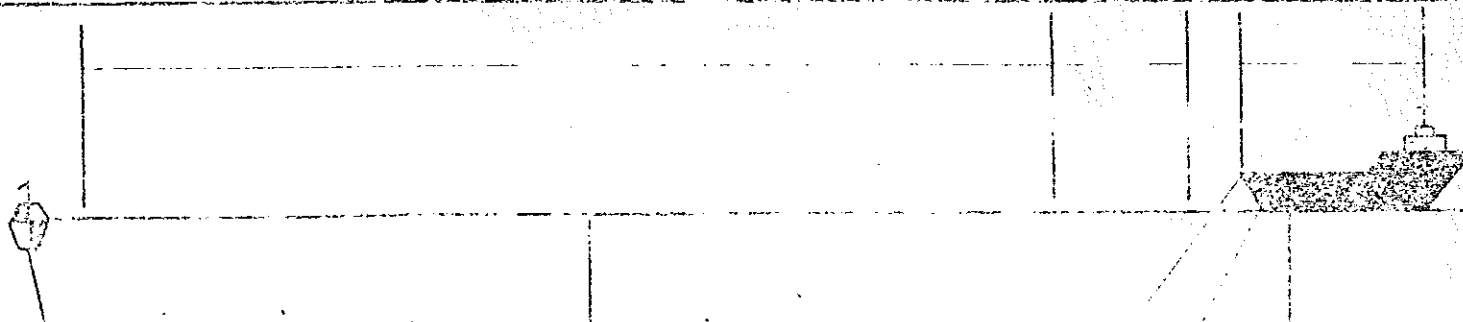
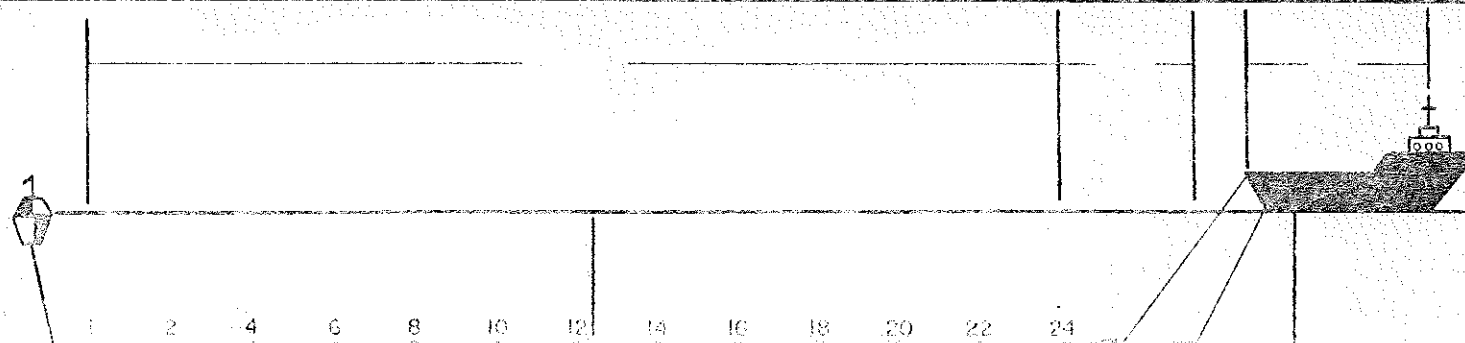


CRUISE FM09-1		LINE FLA-1	
START TIME 0600Z 21 JULY 81 START LAT 26° 19.1' N START LONG -084° 34.9' W		END TIME 0619Z JULY 22, 81 ENDING LAT 26° 34.54' N ENDING LONG -083° 34.77' W	
SOURCE 1-1000 CV CV IN, 1-466 CV IN. AIR SOURCE DEPTH 60'		SOURCE CAPACITY 2000 PSI EA	
NO. OF TRACES 24 NEAR TRACE 2 40-M DEADS PLUS STRETCH + LEADER		GROUP INTERVAL 70-M FAR TRACE 24 GROUPS	
INSTRUMENT FILTERS: LOW 8 HIGH 62 NOTCH —		GAIN MODE SLOPE SLOPE SLOPE	
DATA LENGTH MIN. 10 MAX.		SAMPLE RATE 4 M SEC	
NOMINAL FOLD			
REMARKS STREAMER DEEP ENBOARD END			



CRUISE FM09-1	LINE FLA-2
START TIME 0615Z 0619Z 22 JUL 81 START LAT. 26° 39' . 54' N START LONG. -083° 34.77' W	END TIME 0615Z 1900Z 22 JUL 81 ENDING LAT. 25° 57.16' N 1936Z ENDING LONG. -083° 13.23' W
SOURCE 1-1000 in³ , 1-466 in³ AIRGUN SOURCE DEPTH 60 ft.	SOURCE CAPACITY 2000 psi each.
NO. OF TRACES 24 NEAR TRACE 2 40m deads & stretch & leader	GROUP INTERVAL 70m group FAR TRACE
INSTRUMENT FILTERS: LOW 8 Hz HIGH 62 " NOTCH -	GAIN MODE SLOPE SLOPE SLOPE
DATA LENGTH MIN. 10 MAX. NOMINAL FOLD ~24	SAMPLE RATE 4ms
REMARKS	



[illegible]

CRUISE				LINE		AREA-PROJECT														DATE											
FM09-1				FLA-1		GULF OF MEXICO SOUTH FLORIDA BANK														JULY 21, 1981											
TIME				REEL		SH. PT		RECORD NO.		STRMER DEPTH		GAIN (db)		TRIP		REC.		FLD		REP.		WATER		REL FIRE		CONTINUITY		REMARKS		DB	
1 2 3 4				1 2 3 4		1 2 3 4		1 2 3 4 5 6		1 2 3 4 5 6		INIT RATE FINL		DEL.		LGTH				RATE		DEPTH (Fm)		TIMES		OR LEAKAGE					
01171140				091007		561		532								10		24		20								missed 10 shots TPX 2.			
01171160						573		544																				interlocked out again.			
01172113						588		556		404076												101									
01173354						625		593		404073												101									
01174813						667		635																							
01175322				091007		682		650																							
01175651				091008		692		652																				LAST SHOT On One Wire			
1175832						697		657																				FIRST SHOT Missed 8 shots			
1175932						700		660																							
180724						723		683		454170												99.						Tuned shot			
183243						797		757																				Tuned shot			
183811				091008		813		773																				Tuned shot			
184239				091009		826		777		424174												103						LAST SHOT			
1851355						859		808																				13 shots missed			
18911324						916		865		404077												88						FIRST SHOT			
18923410				0911009		948		895																				Tuned shot			
18928110				0911010		959		896																				" "			
1892908						962		899																				LAST SHOT			
1894006								934																				FIRST "			
18941200																															
18944410																												Pressure Alarm - Shutdown both guns			
1894556						1011		937																				Tape Off			
1895732				0910110		1045		971		424170												87						gun 1 on (gun 3 off)			
1901317				0910110		1091		1018																				Tape On			
1901317				0910110		1091		1018																				Tuned shot. No Record #1000			
1901317				0910110		1091		1018																				LAST SHOT			

CRUISE			LINE		AREA-PROJECT												DATE													
FMD9-1			FLA-1		GULF OF MEXICO SOUTH FLORIDA BANK												JULY 21 1981													
TIME			REEL		SH. PT		RECORD NO.		STRMER DEPTH		GAIN (db)		TRIP DEL.		REC. LGTH		FLD		REP. RATE		WATER DPTH (Fm)		REL FIRE TIMES		CONTINUITY OR LEAKAGE		REMARKS		CS	
1 2 3 4 5 6			1 2 3 4 5 6		1 2 3 4 5 6		1 2 3 4 5 6		1 2 3 4 5 6		1 2 3 4 5 6		1 2 3 4 5 6		1 2 3 4 5 6		1 2 3 4 5 6		1 2 3 4 5 6		1 2 3 4 5 6		1 2 3 4 5 6		1 2 3 4 5 6		1 2 3 4 5 6		1 2 3 4 5 6	
201603			091011		11099		11019		112131456		INIT RATE FINL		10		24		20				83						FIRST SHOT.			
203835					11165		11085		112191170																		timed shot			
210316					11237		11100																				missed shot			
2110626					11246																						missed			
2111003					11257																						MISSED last shot			
2111456			0911012		11271		11101																				FIRST SHOT			
211							11141																							
2131																														
213848					11340		11171		1124168																		#3 gun back on			
2155					11392		11222																				timed shot			
220225			0911013		11410		11223																				LAST shot.			
222619					11480		11292		1134166												70						FIRST SHOT			
2243418					11531		11344																				timed shot			
224409			0911014		11532		11345																				LAST shot			
225625					11568		11381		1104168												68						FIRST SHOT		TPX-2 in use again	
232612					11655		11468																				timed shot			
232713			0911015		11656		11469																				LAST SHOT			
232813					11660		11474		1124163												64						FIRST SHOT			
235314					11734		11547																				Timed shot			
235746					11747		11560		1104171												62						timed shot			
3000754			0911015		11778		11589																				timed shot			
30008			0911016		11781		11592		1124268												61						LAST SHOT			
3002930			0911016		11840		11649																				FIRST SHOT			
30051			0911016		11903		11713																				TIMED SHOT			
3014232			112131456		1157131456		1157131456																				LAST SHOT			

CRUISE				LINE				AREA-PROJECT														DATE														
FM09-1				FLA-1				GULF OF MEXICO														South FLORIDA BANK				JULY 22, 1981										
TIME				REEL				SH. PT		RECORD NO.		STRMER DEPTH						GAIN (db)			TRIP	REC.	FLD	REP.	WATER	REL FIRE			CONTINUITY		REMARKS	OB				
HR	MIN	SEC	C	10	11	12	13	14	15	16	1	2	3	4	5	6	INIT	RATE	FINL	DEL.	LGTH		RATE	DEPTH (Fm)	TIMES	OR	LEAKAGE									
00	5	12	3	09	1	0	17	19	0	K	17	14				28	36	78				10	24	20	56						FIRST SHOT					
01	1	3	15	09	1	0	17	19	6	8	17	78																			TIMED SHOT					
01	3	24	6	09	1	0	17	20	2	4	18	34																			LAST SHOT					
01	3	30	6	09	1	0	18	20	2	5					41	40	68							51							FIRST SHOT					
01	5	13	3	09	1	0	18	20	8	0	18	90																				TIMED SHOT				
02	1	4	50	09	1	0	18	21	4	9	19	59																				LAST SHOT				
02	1	5	11	09	1	0	19	21	5	0	19	60				41	40	68							44							FIRST SHOT				
02	3	41	8	09	1	0	19	22	0	6	20	16																				TIMED SHOT				
				09	1	0	19	22	5	3	20	57																					LAST SHOT	NO RECORD #2000		
02	5	10	5	09	1	0	20	22	5	4	20	58				43	42	64							41								POSSIBLE PROBLEMS W/ DATA ON THIS REEL TAPE DRIVE PROBL			
03	1	13	6	09	1	0	20	23	1	4	21	18																					FIRST SHOT			
03	3	24	9	09	1	0	20	23	7	6	21	80																					TIMED SHOT			
																																			LAST SHOT	
03	3	30	9	09	1	0	21	23	7	2	21	81				42	42	65							39								FIRST SHOT			
03	5	42	3	09	1	0	21	24	7	3	22	43																						TIMED SHOT		
4	1	41	3	09	1	0	21	24	9	7	23	01																						LAST SHOT		
04	1	42	3	09	1	0	21	24	9	8	23	02																						LAST SHOT		
04	1	44	3	09	1	0	22	24	9	9	23	03																						FIRST SHOT		
4	4	52	2					25	8	8	23	92				42	42	68							33.									TIMED SHOT		
4	5	51	4	09	1	0	22	26	1	7	24	22																						LAST SHOT		
4	5	63	9	09	1	0	23	26	2	1	24	23																						FIRST SHOT	3shots missed	
05	1	20	0					26	6	6	24	67				42	42	67							33									TIMED SHOT		
05	3	74	0	09	1	0	23	27	4	1	25	42																						LAST SHOT		
05	3	80	1	09	1	0	24	27	4	2	25	43																						FIRST SHOT		
05	5	40	5	09	1	0	24	27	8	9	25	90																						TIMED SHOT		

9/10/81



CRUISE					LINE					AREA-PROJECT										DATE									
FM09-1					FLA-2					GULF OF MEXICO SOUTH FLORIDA BANK										JULY 22, 1981									
TIME	REEL				SH. PT	RECORD NO.						STRMER DEPTH			GAIN (db)			TRIP DEL.	REC. LGTH	FLD	REP. RATE	WATER DPTH (Fm)	REL FIRE TIMES			CONTINUITY OR LEAKAGE	REMARKS	OB INIT	
	H	R	M	S	C	1	2	3	4	5	6	1	2	3	4	5	6						1	2	3				
061923	0	9	1	0	25	2863	2	6	6	3																			
064218	0	6	4	2	18	2930	2	7	3	0																			
070047	0	7	0	0	47	2984	2	7	8	4																			
070107	0	7	0	1	07	2985	2	7	8	5																			
072037	0	7	2	0	37	3042	2	8	4	2																			
071449	0	7	1	4	49	3104	2	9	0	4																			
071410	0	7	1	4	10	3106	2	9	0	5																			
080220	0	8	0	2	20	3164	2	9	6	3																			
						3228	3	0	2	6																			
082436	0	8	2	4	36	3229	3	0	2	8																			
082903	0	8	2	9	03	3242	3	0	4	1																			
084450	0	8	4	4	50	3289	3	0	8	8																			
090510	0	9	0	5	10	3348	3	1	4	8																			
090620	0	9	0	6	20	3351	3	1	4	8																			
092326	0	9	2	3	26	3401	3	1	9	8																			
092324	0	9	2	3	24	3471	3	2	6	8																			
094744	0	9	4	7	44	3472	3	2	6	9																			
100610	1	0	0	6	10	3526	3	3	2	3																			
102930	1	0	2	9	30	3594	3	3	9	1																			
102947	1	0	2	9	47	3595	3	3	9	2																			
110960	1	1	0	9	60	3672	3	4	6	9																			
111114	1	1	1	1	14	3717	3	5	1	4																			
111151	1	1	1	1	51	3718	3	5	1	5																			
112917	1	1	2	9	17	3769	3	5	6	6																			
115336	1	1	5	3	36	3840	3	6	3	7																			

(clintan) FIRST SHOT

TIMED SHOT

LAST SHOT

FIRST "

TIMED "

LAST "

FIRST "

TIMED "

LAST shot {uncertain about

FIRST "

timed shot

timed shot w/photo

LAST SHOT

First shot

timed shot

LAST SHOT

FIRST SHOT

timed shot w/photo trace

LAST SHOT

FIRST SHOT

Timed SHOT w/photo

LAST SHOT

First SHOT

timed shot

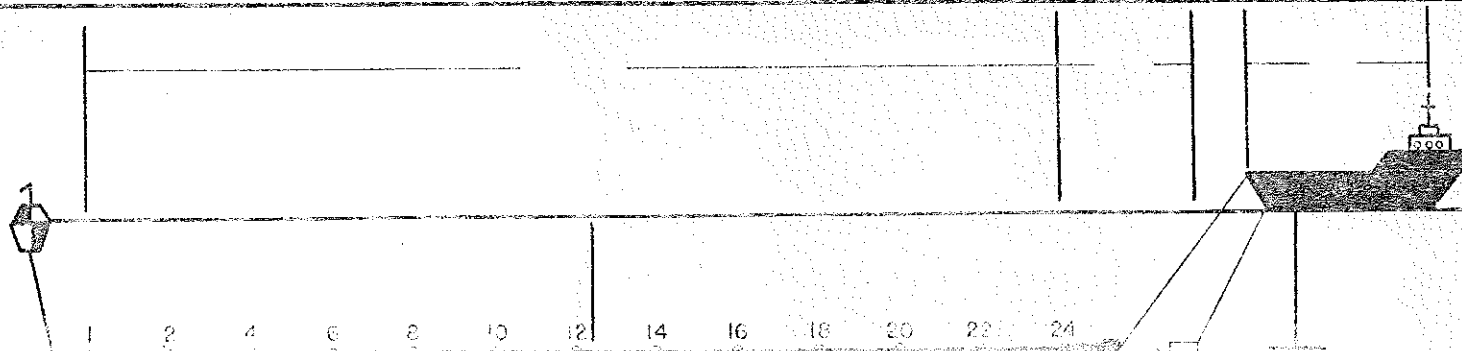
LAST SHOT

HYDROPHONE	DEPLOYED
HYDROPHONE	DIGITAL TAPE

✓

CRUISE				LINE				AREA-PROJECT																DATE																			
FM09-1				FLA-3				GULF OF MEXICO SOUTH FLORIDA BANK																-23 22 JULY 81																			
TIME				REEL				SH. PT				RECORD NO.				STRMER DEPTH				GAIN (db)				TRIP		REC.		FLD		REP.		WATER		REL FIRE		CONTINUITY		REMARKS				OB	
1 2 3 4				5 6 7 8 9				1 2 3 4				1 2 3 4 5 6				INIT RATE FINL				DEL.		LGTH				RATE		DEPTH (Fm)		TIMES		OR LEAKAGE						INIT					
1193623				091044				5193				4991														10		24		20						FIRST SHOT return to FLA-3 RCP							
1195613								5251				5050				38 40 68																		TIMED SHOT									
1201860				091044				5315				5114																						LAST "									
1201826				091045				5316				5115																						FIRST SHOT									
1204545								5384				5183				42 42 64																		TIMED SHOT									
1205952				091045				5437				5236																						LAST SHOT									
1210012				091046				5438				5237																						FIRST SHOT									
1212104								5498				5298				41 41 68																		TIMED SHOT									
1214235								5562				5361																						LAST SHOT - file #5361 was probably lost at end of tape ran out.									
1214255				0911047				5563				5362																						FIRST SHOT									
1220411								5625				5424				39 41 66																		TIMED SHOT									
1222440								5685				5484																						LAST SHOT									
1225000				091048				5686				5485																						FIRST SHOT									
1225140								5764				5563				41 41 65																		timed shot									
1230706								5809				5608																						LAST SHOT { missed 7 shots due to transport									
1230928				0911049				5816				5609																						First SHOT { malfunction or human error									
1232858								5913				5666				42 42 65																		TIMED SHOT									
1235053								5938				5730																						LAST SHOT									
1235114				091050				5938				5731																						FIRST SHOT									
1001448								6007				5800																						TIMED SHOT									
1003316				091050				6061				5854																						LAST SHOT									
1003437				091051				6065				5855				42 41 70																		FIRST SHOT									
1005551								6127				5917																						TIMED SHOT									
1011602				091051				6186				5976																						LAST SHOT									
11				1 2 3 4				5 6 7 8 9				1 2 3 4				1 2 3 4 5 6																											

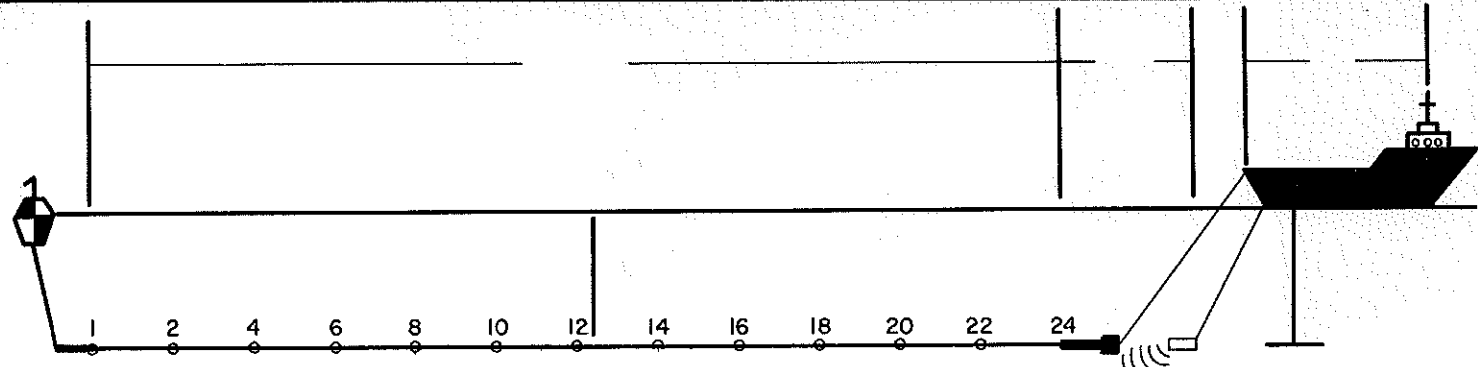
CRUISE FM09-1	LINE FLA-3
START TIME 1936Z 22 JULY 81 START LAT. 25° 57.16' N START LONG. -083° 13.23' W	END TIME 1153Z 23 JULY 81 ENDING LAT. 25° 34' N ENDING LONG. -084° 14' N
SOURCE 1-1000 in³, 1-466 in³ AIRGUN SOURCE DEPTH 60 ft. (25-48)	SOURCE CAPACITY 2000psi each
NO. OF TRACES 24 (shot monitor on tr 23) NEAR TRACE 2 40m deads, stretch & leader	GROUP INTERVAL 70m group FAR TRACE
INSTRUMENT FILTERS: LOW 8 Hz HIGH 62 " NOTCH -	GAIN MODE SLOPE SLOPE SLOPE
DATA LENGTH MIN. 10 MAX. NOMINAL FOLD ~24	SAMPLE RATE 4ms
REMARKS	



[illegible]

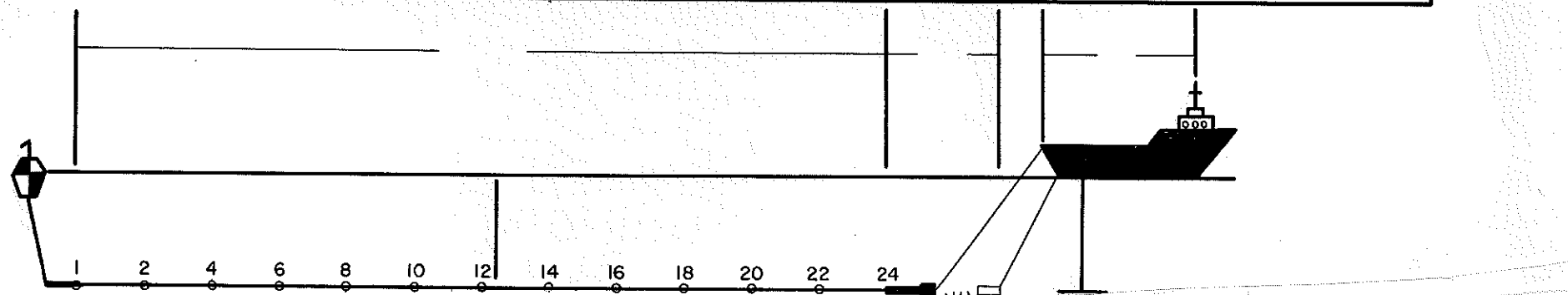
CRUISE				LINE				AREA-PROJECT																DATE																									
FM09-1				FLA-3. #				GULF OF MEXICO SOUTH FLORIDA BANK																JULY 23, 1981																									
TIME				REEL				SH. PT				RECORD NO.				STRMER DEPTH				GAIN (db)				TRIP		REC.		FLD		REP.		WATER DPTH (Fm)		REL FIRE TIMES				CONTINUITY OR LEAKAGE				REMARKS				OB INIT			
1 2 3 4				5 6 7 8 9				10 11 12 13 14				15 16 17 18 19 20				1 2 3 4 5 6				INIT RATE FINL				DEL.		LGTH				RATE																			
065400				091060				7174				6964																																FIRST SHOT					
072445								7264				7055				42 41 64																										TIMED "							
073544				091060				7296				7087																														LAST "							
073605				091061				7297				7088																														FIRST "							
075351								7349				7140				41 42 64																										TIMED "							
081746				091061				7418				7209																														LAST "							
081807				091062				7420				7210																														FIRST shot				{dropped 2 sh. pt.			
084103								7487				7277				42 44 65																										TIMED shot							
090013				091062				7543				7333																														LAST shot							
090033				091063				7544				7334																														FIRST shot							
092643								7603				7393				40 41 67																										TIMED SHOT							
094154				091063				7665				7455																														LAST SHOT							
094236				091064				7667				7456																														FIRST SHOT				missed one shot pt.			
100452								7732				7521				42 42 66																										TIMED shot							
102520								7789				7578																														LAST SHOT				{missed 15 shot points			
102829				091065				7804				7581																														FIRST SHOT							
110473								7837				7634				44 42 67																										TIMED SHOT							
111056								7925				7702																														LAST SHOT							
111114				091066				7926				7703																														FIRST SHOT							
111243								7965				7742				41 41 67																										TIMED shot							
111531								8049				7826																														LAST SHOT				1138 begin turn to FLA-4			
111533				091067				8056				7827																														FIRST shot				still turning			
112151								8113				7890																														TIMED SHOT							
112350				091067				8171				7948																														LAST SHOT							

CRUISE <i>FMD9-1</i>	LINE <i>FLA-4</i>
START TIME <i>1153 Z 23 JULY 81</i> START LAT. <i>25° 34' N</i> START LONG. <i>-084° 13.93' W</i>	END TIME <i>1930 Z, 23 JULY 81</i> ENDING LAT. <i>25° 22.8' N</i> ENDING LONG. <i>-083° 46' W</i>
SOURCE SOURCE DEPTH	SOURCE CAPACITY
NO. OF TRACES NEAR TRACE	GROUP INTERVAL FAR TRACE
INSTRUMENT FILTERS: LOW HIGH NOTCH	GAIN MODE SLOPE SLOPE SLOPE
DATA LENGTH MIN. MAX. SAMPLE RATE NOMINAL FOLD	
REMARKS	



NDISE DECREASING
BUT PRESENT
PARITY ERRO 25

CRUISE <i>FMD 4-1</i>	LINE <i>F4A-5</i>
START TIME <i>1930Z 23JULY81</i> START LAT. <i>25°23'N</i> START LONG. <i>-083°46'W</i>	END TIME ENDING LAT. ENDING LONG.
SOURCE SOURCE DEPTH	SOURCE CAPACITY
NO. OF TRACES NEAR TRACE	GROUP INTERVAL FAR TRACE
INSTRUMENT FILTERS: LOW HIGH NOTCH	GAIN MODE SLOPE SLOPE SLOPE
DATA LENGTH MIN. MAX. SAMPLE RATE NOMINAL FOLD	
REMARKS	



[illegible]

CRUISE				LINE				AREA-PROJECT																DATE																																																																																																																																																																																																																																																																																																																																																																																																																																																																																																																																																																																																																																																																																																																																																																																																																																																																																																																																																																																																																																																																																																																																																																																																																																																																																																																																																																																																																																																																																																			
FM 09-1				FLA-5				Gulf of Mexico South Florida Bank																23-24 July '81																																																																																																																																																																																																																																																																																																																																																																																																																																																																																																																																																																																																																																																																																																																																																																																																																																																																																																																																																																																																																																																																																																																																																																																																																																																																																																																																																																																																																																																																																																			
TIME				REEL				SH. PT				RECORD NO.				STRMER DEPTH				GAIN (db)				TRIP		REC.		FLD		REP.		WATER DPTH (Fm)		REL FIRE TIMES				CONTINUITY OR LEAKAGE				REMARKS				OB INIT																																																																																																																																																																																																																																																																																																																																																																																																																																																																																																																																																																																																																																																																																																																																																																																																																																																																																																																																																																																																																																																																																																																																																																																																																																																																																																																																																																																																																																																																													
1	2	3	4	5	6	7	8	9	10	11	12	13	14	15	16	17	18	19	20	21	22	23	24	25	26	27	28	29	30	31	32	33	34	35	36	37	38	39	40	41	42	43	44	45	46	47	48	49	50	51	52	53	54	55	56	57	58	59	60	61	62	63	64	65	66	67	68	69	70	71	72	73	74	75	76	77	78	79	80	81	82	83	84	85	86	87	88	89	90	91	92	93	94	95	96	97	98	99	100	101	102	103	104	105	106	107	108	109	110	111	112	113	114	115	116	117	118	119	120	121	122	123	124	125	126	127	128	129	130	131	132	133	134	135	136	137	138	139	140	141	142	143	144	145	146	147	148	149	150	151	152	153	154	155	156	157	158	159	160	161	162	163	164	165	166	167	168	169	170	171	172	173	174	175	176	177	178	179	180	181	182	183	184	185	186	187	188	189	190	191	192	193	194	195	196	197	198	199	200	201	202	203	204	205	206	207	208	209	210	211	212	213	214	215	216	217	218	219	220	221	222	223	224	225	226	227	228	229	230	231	232	233	234	235	236	237	238	239	240	241	242	243	244	245	246	247	248	249	250	251	252	253	254	255	256	257	258	259	260	261	262	263	264	265	266	267	268	269	270	271	272	273	274	275	276	277	278	279	280	281	282	283	284	285	286	287	288	289	290	291	292	293	294	295	296	297	298	299	300	301	302	303	304	305	306	307	308	309	310	311	312	313	314	315	316	317	318	319	320	321	322	323	324	325	326	327	328	329	330	331	332	333	334	335	336	337	338	339	340	341	342	343	344	345	346	347	348	349	350	351	352	353	354	355	356	357	358	359	360	361	362	363	364	365	366	367	368	369	370	371	372	373	374	375	376	377	378	379	380	381	382	383	384	385	386	387	388	389	390	391	392	393	394	395	396	397	398	399	400	401	402	403	404	405	406	407	408	409	410	411	412	413	414	415	416	417	418	419	420	421	422	423	424	425	426	427	428	429	430	431	432	433	434	435	436	437	438	439	440	441	442	443	444	445	446	447	448	449	450	451	452	453	454	455	456	457	458	459	460	461	462	463	464	465	466	467	468	469	470	471	472	473	474	475	476	477	478	479	480	481	482	483	484	485	486	487	488	489	490	491	492	493	494	495	496	497	498	499	500	501	502	503	504	505	506	507	508	509	510	511	512	513	514	515	516	517	518	519	520	521	522	523	524	525	526	527	528	529	530	531	532	533	534	535	536	537	538	539	540	541	542	543	544	545	546	547	548	549	550	551	552	553	554	555	556	557	558	559	560	561	562	563	564	565	566	567	568	569	570	571	572	573	574	575	576	577	578	579	580	581	582	583	584	585	586	587	588	589	590	591	592	593	594	595	596	597	598	599	600	601	602	603	604	605	606	607	608	609	610	611	612	613	614	615	616	617	618	619	620	621	622	623	624	625	626	627	628	629	630	631	632	633	634	635	636	637	638	639	640	641	642	643	644	645	646	647	648	649	650	651	652	653	654	655	656	657	658	659	660	661	662	663	664	665	666	667	668	669	670	671	672	673	674	675	676	677	678	679	680	681	682	683	684	685	686	687	688	689	690	691	692	693	694	695	696	697	698	699	700	701	702	703	704	705	706	707	708	709	710	711	712	713	714	715	716	717	718	719	720	721	722	723	724	725	726	727	728	729	730	731	732	733	734	735	736	737	738	739	740	741	742	743	744	745	746	747	748	749	750	751	752	753	754	755	756	757	758	759	760	761	762	763	764	765	766	767	768	769	770	771	772	773	774	775	776	777	778	779	780	781	782	783	784	785	786	787	788	789	790	791	792	793	794	795	796	797	798	799	800	801	802	803	804	805	806	807	808	809	810	811	812	813	814	815	816	817	818	819	820	821	822	823	824	825	826	827	828	829	830	831	832	833	834	835	836	837	838	839	840	841	842	843	844	845	846	847	848	849	850	851	852	853	854	855	856	857	858	859	860	861	862	863	864	865	866	867	868	869	870	871	872	873	874	875	876	877	878	879	880	881	882	883	884	885	886	887	888	889	890	891	892	893	894	895	896	897	898	899	900	901	902	903	904	905	906	907	908	909	910	911	912	913	914	915	916	917	918	919	920	921	922	923	924	925	926	927	928	929	930	931	932	933	934	935	936	937	938	939	940	941	942	943	944	945	946	947	948	949	950	951	952	953	954	955	956	957	958	959	960	961	962	963	964	965	966	967	968	969	970	971	972	973	974	975	976	977	978	979	980	981	982	983	984	985	986	987	988	989	990	991	992	993	994	995	996	997	998	999	1000	1001	1002	1003	1004	1005	1006	1007	1008	1009	1010	1011	1012	1013	1014	1015	1016	1017	1018	1019	1020	1021	1022	1023	1024	1025	1026	1027	1028	1029	1030	1031	1032	1033	1034	1035	1036	1037	1038	1039	1040	1041	1042	1043	1044	1045	1046	1047	1048	1049	1050	1051	1052	1053	1054	1055	1056	1057	1058	1059	1060	1061	1062	1063	1064	1065	1066	1067	1068	1069	1070	1071	1072	1073	1074	1075	1076	1077	1078	1079	1080	1081	1082	1083	1084	1085	1086	1087	1088	1089	1090	1091	1092	1093	1094	1095	1096	1097	1098	1099	1100	1101	1102	1103	1104	1105	1106	1107	1108	1109	1110	1111	1112	1113	1114	1115	1116	1117	1118	1119	1120	1121	1122	1123	1124	1125	1126	1127	1128	1129	1130	1131	1132	1133	1134	1135	1136	1137	1138	1139	1140	1141	1142	1143	1144	1145	1146	1147	1148	1149	1150	1151	1152	1153	1154	1155	1156	1157	1158	1159	1160	1161	1162	1163	1164	1165	1166	1167	1168	1169	1170	1171	1172	1173	1174	1175	1176	1177	1178	1179	1180	1181	1182	1183	1184	1185	1186	1187	1188	1189	1190	1191	1192	1193	1194	1195	1196	1197	1198	1199	1200	1201	1202	1203	1204	1205	1206	1207	1208	1209	1210	1211	1212	1213	1214	1215	1216	1217	1218	1219	1220	1221	1222	1223	1224	1225	1226	1227	1228	1229	1230	1231	1232	1233	1234	1235	1236	1237	1238	1239	1240	1241	1242	1243	1244	1245	1246	1247	1248	1249	1250	1251	1252	1253	1254	1255	1256	1257	1258	1259	1260	1261	1262	1263	1264	1265	1266	1267	1268	1269	1270	1271	1272	1273	1274	1275	1276	1277	1278	1279	1280	1281	1282	1283	1284	1285	1286	1287	1288	1289	1290	1291	1292	1293	1294	1295	1296	1297	1298	1299	1300	1301	1302	1303	1304	1305	1306	1307	1308	1309	1310	1311	1312	1313	1314	1315	1316	1317	1318	1319	1320	1321	1322	1323	1324	1325	1326	1327	1328	1329	1330	1331	1332	1333	1334	1335	1336	1337	1338	1339	1340	1341	1342	1343	1344	1345	1346	1347	1348	1349	1350	1351	1352	1353	1354	1355	1356	1357	1358	1359	1360	1361	1362	1363	1364	1365	1366	1367	1368	1369	1370	1371	1372	1373	1374	1375	1376	1377	1378	1379	1380	1381	1382	1383	1384	1385	1386	1387	1388	1389	1390	1391	1392	1393	1394	1395	1396	1397	1398	1399	1400	1401	1402	1403	1404	1405	1406	1407	1408	1409	1410	1411	1412	1413	1414	1415	1416	1417	1418	1419	1420	1421	1422	1423	1424	1425	1426	1427	1428	1429	1430	1431	1432	1433	1434	1435	1436	1437	1438	1439	1440	1441	1442	1443	1444	1445	1446	1447	1448	1449	1450	1451	1452	1453	1454	1455	1456	1457	1458	1459	1460	1461	1462	1463	1464	1465	1466	1467	1468</

[illegible]

[illegible]

CRUISE				LINE				AREA-PROJECT														PAGE		OF																	
FM09-1				FLA-6/7				GULF OF MEXICO				SOUTH FLORIDA BANK										DATE																			
TIME				REEL				SH. PT				RECORD NO.				STRMER DEPTH				GAIN (db)				TRIP		REC.		FLD		REP.		WATER		REL FIRE		CONTINUITY		REMARKS		OB	
1 2 3 4				5 6 7 8 9				10 11 12 13 14				15 16 17 18 19 20				1 2 3 4 5 6				INIT RATE FINL				DEL.		LGTH		FLD		RATE		DPTH (Fm)		TIMES		OR LEAKAGE					
163531				091108				3084				12865																													
170809								3156				12937								38 40 69																		FIRST SHOT			
171756				091108				3208				12989																20										TIMED "			
171817				091109				3209				12990																										LAST " Short record.			
174336								3283				13065								40 40 65								21										FIRST "			
180002				091109				3331				13113																										TIMED " Rollover - missed			
180023				091110				3332				13114																										LAST "			
182439								3403				13185								40 40 62								21										FIRST "			
184246				091110				3456				13238																										TIMED "			
184305				091111				3457				13239																										LAST " Short rec.			
190908								3533				13315								41 41 62								22										FIRST "			
192429				091111				3578				13360																										TIMED "			
192450				091112				3579				13361																										LAST "			
194644								3643				425								40 42 66								22										FIRST "			
200639				091112				3707				13483																										TIMED " 1945Z SAT NAV			
200813				091113				3705				13484																										LAST " back up			
203610								3770				13549								39 41 64								23										FIRST " Missed 4 shots			
204940				091113				3827				13606																										TIMED "			
205001				091114				3828				13607																										LAST "			
211113								3890				13669								41 41 68								25										First shot			
213206				091114				3951				13730																										TIMED SHOT			
213226				091115				3952				13731																										LAST SHOT			
215907								4030				13809								41 41 62								26										FIRST SHOT			
221408				091115				4074				13853																										TIMED SHOT			
1 2 3 4				5 6 7 8 9				10 11 12 13 14				15 16 17 18 19 20																										LAST SHOT			

[illegible]

[illegible]

[illegible]

10121

[illegible]

[illegible]

CRUISE					LINE					AREA-PROJECT															DATE																															
FM09-1					FLA-9					GULF OF MEXICO															26 JULY 1981																															
										SOUTH FLA. BANK																																														
TIME					REEL					SH. PT					RECORD NO.					STRMER DEPTH					GAIN (db)					TRIP DEL.		REC. LGTH		FLD		REP. RATE		WATER DPTH (Fm)		REL FIRE TIMES					CONTINUITY OR LEAKAGE					REMARKS					OB INIT	
1 2 3 4					5 6 7 8 9					10 11 12 13					14 15 16 17					18 19 20 21					22 23 24 25					26 27		28 29		30 31		32 33		34 35		36 37 38 39					40 41 42 43					44 45						
0124155					0911164					20822					20585										404259													47												FIRST SHOT						
0130552										20892					20655																																			TIMED SHOT						
0133313					0911164					20972					20735																																			LAST SHOT						
0133333					0911165					20973					20736					424259													48												FIRST SHOT											
0135914										21048					20811																																			TIMED SHOT						
0142412					0911165					21121					20884																																			LAST SHOT						
0142432					0911166					21122					20885					404159											47												FIRST SHOT													
0145053										21199					20962																																			TIMED SHOT					FILE	
0151550					0911166					21272					20036																																			LAST SHOT					MISSED 20000	
0151610					0911167					21273					20037					404259											49												FIRST SHOT													
0154025										21343					20108																																			TIMED SHOT						
0160709					0911167					21422					21186																																			LAST SHOT						
0160730					0911168					21423					21187																																			FIRST SHOT						
0163552										21506					21270					404058											52												TIMED "													
0165848					0911168					21573					21337																																			LAST "						
0165908					0911169					21574					21338																																			FIRST "						
0172854										21661					21425					404058											52												TIMED "													
0174946					0911169					21722					21486																																			LAST "						
0175006					0911170					21723					21487																																			FIRST "						
01811830										21806					21570					404158											55												TIMED "													
0184145					0911170					21874					21638																																			LAST "						
0184205					0911171					21875					21639																																			FIRST "						
0190259										21936					21700					404158											58												TIMED "													
0193244					0911171					22023					21784																																			LAST "						

[illegible]