
LMG 1206

Haz Waste Run

Cruise Data Report

By W. Kevin Pedigo



07 June, 2012 – 25 June, 2012

Table of Contents

INTRODUCTION	1
ARCHIVE DATA EXTRACTION	2
CD DIRECTORY STRUCTURE.....	3
DISTRIBUTION CONTENTS.....	4
ADCP	4
CALIBRATION.....	4
IMAGERY	4
LOGSHEETS	4
MAPS.....	4
OCEAN (CTD, XBT AND XCTD).....	4
/Ocean/CTD	4
/Ocean/XBT	5
/Ocean/XCTD	6
DATA AND SCIENCE REPORT	6
SALTS.....	6
SCIENCE	6
WAYPOINTS.....	6
QC PLOTS	6
JGOFS DATA SET.....	7
RVDAS	8
<i>Meteorological and Light Data.....</i>	<i>8</i>
<i>Navigational Data</i>	<i>8</i>
<i>Geophysical Data</i>	<i>8</i>
<i>Oceanographic Data.....</i>	<i>8</i>
DATA FILE NAMES AND STRUCTURES.....	9
LKNU – KNUDSEN SONAR	9
LNDS – NET DEPTH SENSOR.....	10
LWN1 - WINCHES.....	10
LMWX - CAMPBELL METEOROLOGICAL DAS.....	10
LSEA – WET WALL FLOWS, TRANSMISSOMETER	11
UTSG – MICROTSG, THERMOSALINOGRAPH.....	12
LRTM – DIGITAL REMOTE TEMPERATURE	12
LDFLR – FLUOROMETER, WETLAB ECO	12
LOXY - OXYGEN	13
LPCO – PCO2 SYSTEM.....	13

LGUV – BIOSPHERICAL GUV	14
LSVP - SOUND VELOCITY PROBE IN ADCP TRANSDUCER WELL	15
LADC – ADCP SPEED LOG	15
LGYR - GYRO	15
LSEP – SEAPATH 330 GPS	16
LGAR - GARMIN GPS	17
TGPS – TRIMBLE CENTURION GPS	19
LMG SENSORS	21
SHIPBOARD SENSORS	21
UNDERWAY CALIBRATION SHEETS	22
REMOTE TEMPERATURE	22
THERMOSALINOGRAPH (TEMP) – PRIMARY	23
THERMOSALINOGRAPH (CONDUCTIVITY) - PRIMARY	24
THERMOSALINOGRAPH (TEMP) – SECONDARY	25
THERMOSALINOGRAPH (CONDUCTIVITY) – SECONDARY	26
TRANSMISSOMETER	27
FLUOROMETER	28
PSP	29
PIR	30
PAR	31
TEMPERATURE/RELATIVE HUMIDITY	32
BAROMETER	33
GUV	34
ACQUISITION AND PROCESSING INFORMATION	35
PROCESSING SPECIFICS	35
ERRORS AND EVENTS	35

Introduction

The LMG data acquisition systems continuously log data from a suite of instrumentation throughout the cruise. This document describes the format of that data and its location on the distribution CDs. It also contains important information that may affect how this data is processed such as instrument failures or other known problems with acquisition.

The data collected during this cruise is distributed on a CD-ROM written in ISO9660 level-1 format. This data format has very strict requirements on filenames and organization. However, it is readable by virtually every computing platform.

All of the data has been archived with the Unix “tar” command and/or compressed using Unix “gzip” compression. Tar files have a “.tar” extension and Gzipped files have a “.gz” extension. Tools are available on all platforms for uncompressing and de-archiving these formats. On Macintosh, Stuffit Expander with DropStuff will open a tar archive and uncompress gzipped and Unix compressed files. For Windows, WinZip, a shareware utility included on this CD (remember, it is shareware) will open these files.

In some cases to adhere to the ISO9660 format the .tar extension was removed. When we tarred the files then gzip the tar archive the name of the file became *File.tgz*. This name does not follow the 8.3 naming convention of the ISO9660 format. On Windows and Mac Platforms Winzip and Stuffit Expander handles this just fine. When they expand the *File.gz* the expanded file becomes *File.tar*, which both software packages can handle. On Unix platforms gunzip expands *File.tgz* but it does not append the .tar extension. So you may not recognize the file as a tar archive, but OS does recognize it as a tar archive. If you use the file command it will return saying it is a tar file. The below tar command will un-archive the file just fine.

IMPORTANT: Read the last section in this document, Acquisition Problems and Events, for important information that may affect the processing of this data.

Archive Data Extraction

It is often useful to know exactly how an archive was produced when expanding its contents. Tar files were created using the following commands:

```
tar cvf archive-file files-to-be-archived
```

To create a list of the files in the archive:

```
tar tvf archive-file > contents.list
```

To extract the files from the archive:

```
tar xvf archive-file file(s)-to-extract
```

G-zipped files will have a “.gz” extension on the filename. These files can be decompressed after de-archiving, using:

```
gunzip filename.gz
```

CD Directory Structure

<p>ADCP: ADCP.tar</p> <p>Cal: InstCoef.txt UW/</p> <p>Imagery: Imag.tar</p> <p>Logs: Airlog_SB.pdf Airlog_NB.pdf</p> <p>Maps: LMG1205.jpg LMG1205.track</p> <p>Process: JGOF.tar PCO2.tar PROC.tar QC.tar</p> <p>Report: Report.doc Report.pdf</p> <p>RVDAS: nav/ uw/</p> <p>Utility: Acrobat Winzip</p>		
--	--	--

Distribution Contents

ADCP

/Adcp/

This directory contains a tar file of gentoo's proc directory, which contains a database of the averaged ping data, Matlab m-files used in processing the data, and daily graphs of the currents. For more information contact Teri Chereskin at tchereskin@ucsd.edu.

Calibration

/Cal/

Refer to the InstCoef.txt file along with the specific instrument calibration sheets, both located in this directory, for information on how the RVDAS data was collected and processed.

Imagery

/Imagery/

This directory contains things such as ice imagery, isobar charts, sat imagery, wave and wind images, and weather reports.

Logsheets

/logsheet/

This directory contains logsheets for XBT, XCTD, salts, air samples and TCO2 data. For further information on this data (TCO2), contact Tim Newberger at tnewberg@ldeo.columbia.edu.

Maps

/Maps/

This directory maps and mapping data generated by the ship's MCIS and automated scripts, usually in JPEG or PostScript format, plus any maps provided for this purpose by the on-board science party.

Ocean (CTD, XBT and XCTD)

/Ocean/CTD

The ctd data was collected and processed on a computer running Windows XP, using Seasave Win32 – Version 7.20 and SBE Data Processing – Version 7.21

For more information and software visit the web site at www.seabird.com.

/Ocean/CTD/Configs/

This directory contains the Seabird .xmlcon config file. This file contains information of which sensors where used and what freq or volt the where connected to.

/Ocean/CTD/Scripts/

This directory contains the batch file and psa files that we used for post processing the data. The data was processed with the standard seabird processing method. This is just a preliminary processing which was done to verify that the sensors were functioning properly during the cruise. The raw data should be re-processed using the pre and post cruise sensor calibrations.

/Ocean/CTD/Raw

This directory contains the raw file collected at each CTD cast, which is represented by a set of four files containing a bottle-firing file (.bl), a configuration file (.xmlcon), a data file (.hex) and a header file (.hdr). Casts are named with the following g501CCC.ext, where g is for the LMG, 501 is the cruise 05-01, CCC is the cast number. For example; the raw files associated with the Cast 1 are: g501001.bl, g501001.con, g501001.dat, g501001.hdr. The raw data files(*.hex) are binary files.

/Ocean/CTD/Graphs

This directory contains graphical plots of each CTD cast.

/Ocean/CTD/Process

This directory contains the processed data files for each CTD cast, the processing method used is briefly described in the above section *CTD/Scripts/*. Also see the above section *CTD/Data/raw* for a description of the file naming convention used. Each processed cast is represented here by a set of ten files:

GXXXCCC.xmlcon	A copy of the configuration file for the cast.
GXXXCCC.cnv	The converted file for the whole cast.
GXXXCCC.ros	The rosette file that contains the scan lines for each bottle trip.
GXXXCCC.btl	The bottle file that contains the avg, standard deviation, min, and max for a select set of variables for each bottled fired during the upcast.
dGXXXCCC.cnv	The converted file for the down cast.
dGXXXCCC.asc	An ASCII formatted file for the down cast without a header.
dGXXXCCC.hdr	The header for the down cast.
uGXXXCCC.cnv	The converted file for the up cast.
uGXXXCCC.asc	An ASCII formatted file for the up cast without a header.
uGXXXCCC.hdr	The header for the up cast.

/Ocean/XBT

Contains a zip archive of XBT data generated for the Drake Transect by NOAA standard "AMVERSEAS" software. Non-Drake transect data may also be included, which will a combination of binary and ascii files generated by standard Sippican MK-21 software. The dataset includes the following files:

dat.zip	The probe drop schedule and other configuration files.
efiles.zip	The edited data files.
log.zip	The log files for drop and GPS positioning.
nav.zip	The navigation files.
sfiles.zip	The raw data files.
*.pdf	Scanned images of the paper log sheets.

/Ocean/XCTD

Expendable Conductivity, Temperature, and Depth (XCTD) digital probes were used to obtain water column temperature and Salinity profiles. The two files were created for each drop .RDF files contain the raw data, and the .EDF contain the exported ascii data.

Data and Science Report

/Report/

Copies of this report in MS Word, HTML, and text formats.

Salts

/Salinity/

This directory contains the log sheet for the Salt sample take during the Drake Transect Sampling, also a spreadsheet containing the Salt sample and TSG comparison. These samples were analyzed with the onboard AutoSal by the MST.

Science

/Science/

This directory, if populated, contains data specified by the on-board science party.

WAYPOINTS

/WAYPTS/

Contains the waypoint file used for the cruise; this is read by the DAS system and the selected waypoint is displayed on the CCTV system.

QC Plots

/Process/QC_PLOTS/

Postscript files of data stored each day on RVDAS for quality control analysis during the cruise. There are 3 types of files, named metXXX.ps, navXXX.ps, and oceanXXX.ps, where XXX is represents the Julian day. Met files are a summary of the data from the meteorological instruments, Nav files are a summary of navigational data, and Ocean files are a summary of the underway seawater and bathymetry data.

JGOFS Data Set

/Process/JGOF/

The JGOFS data set consists of a single file produced each day named jg<julian_day>.dat.gz where <julian_day> is the day the data was acquired. The “.gz” extension indicates that the individual files are compressed before archiving. The daily file consists of 22 separate columnar fields in text format, which are described below. The JGOFS data set is obtained primarily by applying calibrations to raw data and decimating to whole minute intervals. However, several fields are derived measurements from more than a single raw input. *Note: Null, unused, or unknown fields are filled with 9's in the JGOFS data.*

Additionally, 3 separate QC plots are generated daily by the ET using the JGOFS data set. These plots include TSG and Bathymetry data, meteorological data, and navigation data. The files are called ocean<julian_day>.ps, met<julian_day>.ps, and nav<julian_day>.ps respectively.

Field	Data	Units
01	GMT date	dd/mm/yy
02	GMT time	hh:mm:ss
03	PCOD latitude (negative is South)	Ddd.dddd
04	PCOD longitude (negative is West)	Ddd.dddd
05	Ships speed	Knots
06	GPS HDOP	-
07	Gyro Heading	Degrees (azimuth)
08	Course over ground	Degrees (azimuth)
09	Mast PAR	μEinsteins/meters ² sec
10	Sea surface temperature	°C
11	Not used	-
12	Sea surface salinity	PSU
13	Sea depth (uncorrected, calc. sw sound vel. 1500 m/s)	meters
14	True wind speed (port windbird)	meters/sec
15	True wind direction (port windbird)	degrees (azimuth)
16	Ambient air temperature	°C
17	Relative humidity	%
18	Barometric pressure	mBars
19	Sea surface fluorometry	μg/l
20	Transmissometer	Volts (0-5)
21	PSP	W/m ²
22	PIR	W/m ²

RVDAS

/RVDAS/

RVDAS (Research Vessel Data Acquisition System) was developed at Lamont-Doherty Earth Observatory of Columbia University and has been used on the R/V Maurice Ewing for several years. It was adapted for use on the Nathaniel B. Palmer and her sister ship, the R/V Laurence M. Gould.

Below you will find detailed information on the data included. Be sure to read the "Significant Acquisition Events" section below for important information about data acquisition during this cruise.

Meteorological and Light Data

Measurement	File ID	Collect. Status	Rate	Instrument
Air Temperature	lmwx	continuous	1 sec	R. M. young 41372VC
Relative Humidity	lmwx	continuous	1 sec	R. M. young 41372VC
Wind Speed/Direction	lmwx	continuous	1 sec	Gill Ultrasonic
PAR, (Photosynthetically-Available Radiation)	lmwx	continuous	1 sec	BSI QSR-240
Barometer	lmwx	continuous	1 sec	R. M. young 61201
GUV	lguv	continuous	1 sec	GUV2511
PIR (LW radiation)	lmwx	continuous	1 sec	Eppler PIR
PSP (SW radiation)	lmwx	continuous	1 sec	Eppler PSP
Port Ultrasonic Wind Speed/Direction	lmwx	continuous	1 sec	Gill Wind Observer II

Navigational Data

Measurement	File ID	Collect. Status	Rate	Instrument
Trimble GPS	tgps	civilian mode	1 sec	Trimble 20636-00SM
Gyro	lgyr	continuous	0.2 sec	Anschutz Gyro
Garmin GPS	lgar	continuous	1 sec	Garmin 17
Seapath GPS	Lsep	Continuous	1 sec	Seapath 330

Geophysical Data

Measurement	File ID	Collect. Status	Rate	Instrument
Bathymetry	lknu	variable	Varies	Knudsen 320B/R
Net Depth Sensor	lnds	variable	~1/3 sec	Omega PX-605
DUSH 11 Winch	lwn1	variable	varies	Markey DUSH 11
DUSH 5 Winch	lwn1	variable	varies	Markey DUSH 5
DUSH 4 Winch	lwn1	variable	varies	Markey DUSH 4

Oceanographic Data

Measurement	File ID	Collect. Status	Rate	Instrument
Salinity	utsg	continuous	1 sec	SeaBird 45
Sea Surface Temperature	Lrtm	continuous	1 sec	SeaBird 38
Fluorometry (digital)	lfir	continuous	1 sec	Turner 10-AU-005
Fluorometry (digital)	ldflr	continuous	1 sec	Wetlab ECO
ADCP, Speed Log	ladc	continuous	1 sec	RD Instruments
Oxygen	loxy	continuous	1 sec	
PCO2	lpco2	continuous	2.5 min	

Data File Names and Structures

RVDAS data is divided into two broad categories, **Underway** and **Navigation**. The groups are abbreviated “uw” and “nav”. Thus, these two tar files, lmguw.tar and lmgnav.tar exist under the top-level rvdas directory. The instruments are broken down as shown. Each data file is g-zipped to save space on the distribution. Not all data types are collected everyday or on every cruise.

RVDAS data files are named following the convention: LMG[FileID].dDDD.

- The FileID is a 4-character code representing the system being logged, for example: lmet (for meteorology)
- DDD is the Julian day of the data collection

Underway Data	File ID	Navigation Data	File ID
Meteorological - Cambell	lmwx	Gyro Compass	lgyr
Knudsen	lknu	P-CODE GPS	tgps
microTSG	utsg	Garmin 17 GPS	lgar
Digital Remote Temperature	lrtm	Seapath 330 GPS	lsep
Fluorometer – Wetlab ECO	ldfl		
ADCP	ladc		
Sound Velocity Probe	lsvp		
GUV & PUV	lguv		
PCO2 System	lpcu		
Oxygen	loxy		
Wet Wall Flows	lsea		
Winches: Dush4,5,&11	lwn1		
Net Depth Sensor	lnds		

Data is received by the RVDAS system via RS-232 serial connections. The data files that comprise the rvdas data set are described below. A time tag is added to each line of data received and the data is written to disk.

YY+DDD:HH:MM:SS.SSS [data stream from instrument]

Where, YY: two-digit year, DDD: Julian Day, HH: 2 digit hours, MM: 2 digit minutes SS.SSS: seconds. All times are UTC.

The delimiters used to separate fields in the raw data files are usually spaces and commas, but other delimiters are used (:, =, @) and occasionally there is no delimiter. Care should be taken when reprocessing the data that the fields separations are clearly understood. An example data

lknu – Knudsen Sonar

08+024:07:36:36.245 HF,00.00, 000,0,LF,448.9,-026,1

Field	Data	Units
1	RVDAS Time Tag	
2	HF – high frequency header (12 kHz)	
3	HF - depth to surface	meters
4	HF - Echo Strength	
5	HF – Depth Valid Flag	
6	LF – low frequency header (3.5 kHz)	
7	LF - depth to surface	meters
8	LF - Echo Strength	
9	LF – Depth Valid Flag	

Inds – Net Depth Sensor

99+099:00:18:19.775 V01 00199.8

Field	Data	Units
1	RVDAS Time Tag	
2	V01 – Sensor 1	label
3	Depth	meters

lwn1 - Winches

08+033:11:27:50.673 RD,DUSH-5,00111.63,00000000,-0000012,1938

Field	Data	Units
1	RVDAS Time Tag	
2	Record Identifier, RD=Remote Data	
3	Winch Identifier, DUSH-X where X is 4, 5, or 11	
4	Tension	lbs
5	Speed	Meters/minute
6	Payout	meters
7	Checksum	

Imwx - Campbell Meteorological DAS

08+034:13:52:14.216 PUS,A,356,002.15,M,+332.28,+000.97,60,08

Field	Data	Units
1	RVDAS Time Tag	
2	PUS tag – Port UltraSonic Anemometer	
3	Unit Identification, A-Z	
4	Port Wind Direction, degrees relative to Bow	deg
5	Port Wind Speed	m/s
6	Units, M=meters per second	
7	Sound Speed	m/s
8	Sonic Temperature	°C
9	Status, 0=ok, 60=Heating Enabled & ok, Other value mean a fault	
10	Check Sum	

08+034:13:52:14.216 SUS,A,356,002.15,M,+332.28,+000.97,60,08

Field	Data	Units
1	RVDAS Time Tag	
2	SUS tag – Starboard UltraSonic Anemometer	
3	Unit Identification, A-Z	
4	Port Wind Direction, degrees relative to Bow	deg
5	Port Wind Speed	m/s
6	Units, M=meters per second	
7	Sound Speed	m/s
8	Sonic Temperature	°C
9	Status, 0=ok, 60=Heating Enabled & ok, Other value mean a fault	
10	Check Sum	

08+034:13:52:14.454 MET,12.22322,44.25706,-75,-25,-363.6365,2.332982,-0.08215196,278.6845,279.2192,854.6198

Field	Data	Units
1	RVDAS Time Tag	
2	MET tag	
3	Power Supply Voltage	Volts
4	Enclosure Relative Humidity	%
5	Air Temp	°C
6	Air Relative Humidity	%
7	PAR	mVolts
8	PSP Thermopile	mVolts
9	PIR Thermopile	mVolts
10	PIR Case Temperature	°K
11	PIR Dome Temperature	°K
12	Barometer	mBars

Lsea – wet wall flows, transmissometer

12+004:12:01:04.438 WetLab_1,14.1,XMISS,3.098,V,0.000,0.000,0.000,-928.535,-220.566,0.000,0.000,T,NAN,NAN,NAN,NAN,P,0,0,F,47.91811,0,6.815308,0,0,0,0,0,I,1,1,1,1

Field	Data	Units
01	RVDAS Time Tag	
02	WetLab_1	Text
03	Internal Temperature	°C
04	XMISS	Text
05	Transmissometer	V
06	V	Text
07	Double Ended Voltage 1	V
08	Double Ended Voltage 2	V
09	Double Ended Voltage 3	V
10	Voltage 1	V
11	Voltage 2	V
12	Voltage 3	V
13	Voltage 4	V
14	T	Text
15	Temperature 1	°C
16	Temperature 2	°C
17	Temperature 3	°C
18	Temperature 4	°C
19	P	Text
20	Pulse Counter 1	Number
21	Pulse Counter 2	Number
22	F	Text
23	Flow Counter 1	Number
24	Flow Counter 2	Number
25	Flow Counter 3	Number
26	Flow Counter 4	Number
27	Flow Counter 5	Number
28	Flow Counter 6	Number
29	Flow Counter 7	Number
30	Flow Counter 8	Number

Field	Data	Units
31	I	Text
32	Digital Input 1	Number
33	Digital Input 2	Number
34	Digital Input 3	Number
35	Digital Input 4	Number

utsg – microTSG, Thermosalinograph

For further information on this data, check www.seabird.com for SBE 45 MicroTSG Thermosalinograph

08+037:13:45:57.596 2.6470, 3.03853, 33.8129, 1459.351

Field	Data	Units
1	RVDAS Time Tag	
2	Internal water temperature	°C
3	Conductivity	S/m
4	Salinity	psu
5	Sound Velocity	m/s

Irtm – digital Remote Temperature

For further information on this data, check on www.seabird.com on SBE38 Digital Thermometer

08+037:13:47:17.841 2.2527

Field	Data	Units
1	RVDAS Time Tag	
2	External water temperature	°C

Idflr – Fluorometer, Wetlab ECO

08+037:13:55:08.434 99/99/99 99:99:99 0.00 2585 73 543

Field	Data	Units
1	RVDAS Time Tag	
2	Fluorometer Date	mm/dd/yy
3	Fluorometer Time	hh:mm:ss
4	Chlorophyll Signal	µg/l
5	Reference	λq
6	Counts – Chlorophyll Signal	Count
7	Thermistor	

loxy - Oxygen

For further information on this data, contact Tim Newberger at tnewberg@ldeo.columbia.edu

```
04+117:23:57:23.504 MEASUREMENT      3830      380 Oxygen:      309.95      Saturation:
83.48 Temperature:      -1.35      DPhase:      33.41      BPhase:      32.22
0.00 RPhase:      0.00      BAmp:      262.09      BPot:      163.00      RAmp:
0.00 RawTem.:      694.92
```

Field	Data	Units
1	RVDAS Time Tag	
2-4	Measurement ID, Model Number, Serial Number	alphanumeric
5	Oxygen heading	text
6	Oxygen Reading	Raw numeric
7	Saturation heading	text
8	Saturation Reading	Raw numeric
9	Temperature heading	text
10	Water Temperature	°C
11	Dphase heading	text
12	Dphase	Raw numeric
13	Bphase heading	text
14	BPhase	Raw numeric
15	Rphase heading	text
16	Rphase	Raw numeric
17	Bamp heading	text
18	Bamp	Raw numeric
19	Bpot heading	text
20	Bpot	Raw numeric
21	Ramp heading	text
22	Ramp	Raw numeric
23	RawTem heading	text
24	RawTemp	Raw numeric

Ipco – PCO2 system

For further information on this data, contact Tim Newberger at tnewberg@ldeo.columbia.edu

```
02+319:23:59:13.748 2002319.99851      7154.27      26.49      1033.6      325.79      6.74      329.3
53.76      0      Equil
```

Field	Data	Units
1	RVDAS Time Tag	
2	Julian date file string	Julian
3	IR voltage reading	mV
4	Cell temperature	°C
5	Barometer	millibars
6	VCO2	mL
7	Equilibrator temperature	°C
8	PCO2	millibars
9	Gas flow	mL/min
10	Solenoid position ID	number
11	Valve Position ID	number
12	Measured gas	name

Lguv – Biospherical GUV

08+037:14:17:59.211 020608 141758 -.000099 1.307E0 7.24E0 1.316E1 2.609E1 3.285E1 3.505E1 8.075E-
2 38.993 17.985

GUV only

Field	Data	Units
1	RVDAS Time Tag	
2	GUV Computer Date	mmddyy
3	GUV Computer Time	hhmmss
4	Ed0Gnd - GUV	Volts
5	Ed0305 - GUV	$\mu\text{W}/\text{cm}^2\text{nm}$
6	Ed0313 - GUV	$\mu\text{W}/\text{cm}^2\text{nm}$
7	Ed0320 - GUV	$\mu\text{W}/\text{cm}^2\text{nm}$
8	Ed0340 - GUV	$\mu\text{W}/\text{cm}^2\text{nm}$
9	Ed0380 - GUV	$\mu\text{W}/\text{cm}^2\text{nm}$
10	Ed0395 - GUV	$\mu\text{W}/\text{cm}^2\text{nm}$
11	Ed0PAR - GUV	$\mu\text{E}/\text{cm}^2\text{sec}$
12	Ed0Temp - GUV	$^{\circ}\text{C}$
13	Ed0VIn	Volts

GUV and PUV

Field	Data	Units
1	RVDAS Time Tag	
2	GUV Computer Date	mmddyy
3	GUV Computer Time	hhmmss
4	EdZGnd -PUV	Volts
5	EdZ305 -PUV	$\mu\text{W}/\text{cm}^2\text{nm}$
6	EdZ313 -PUV	$\mu\text{W}/\text{cm}^2\text{nm}$
7	EdZ320 -PUV	$\mu\text{W}/\text{cm}^2\text{nm}$
8	EdZ395 -PUV	$\mu\text{W}/\text{cm}^2\text{nm}$
9	EdZ340 -PUV	$\mu\text{W}/\text{cm}^2\text{nm}$
10	EdZPAR -PUV	$\mu\text{E}/\text{cm}^2\text{sec}$
11	LuZChl -PUV	$\mu\text{E}/\text{srm}^2\text{sec}$
12	EdZ380 -PUV	$\mu\text{W}/\text{cm}^2\text{nm}$
13	WTemp -PUV	$^{\circ}\text{C}$
14	Depth -PUV	m
15	EdZTemp -PUV	$^{\circ}\text{C}$
16	LuZTemp -PUV	$^{\circ}\text{C}$
17	Tilt -PUV	Degrees
18	Roll -PUV	Degrees
19	Ed0Gnd - GUV	Volts
20	Ed0305 - GUV	$\mu\text{W}/\text{cm}^2\text{nm}$
21	Ed0313 - GUV	$\mu\text{W}/\text{cm}^2\text{nm}$
22	Ed0320 - GUV	$\mu\text{W}/\text{cm}^2\text{nm}$
23	Ed0340 - GUV	$\mu\text{W}/\text{cm}^2\text{nm}$
24	Ed0380 - GUV	$\mu\text{W}/\text{cm}^2\text{nm}$
25	Ed0395 - GUV	$\mu\text{W}/\text{cm}^2\text{nm}$
26	Ed0PAR - GUV	$\mu\text{E}/\text{cm}^2\text{sec}$
27	Ed0Temp - GUV	$^{\circ}\text{C}$
28	Ed0VIn	Volts

Isvp - Sound Velocity Probe in ADCP Transducer Well

00+348:01:59:52.128 1539.40

Field	Data	Units
1	RVDAS Time Tag	
2	Sound velocity	m/s

Iadc – ADCP Speed Log

00+019:23:59:59.099 \$PUHAW,UVH,-1.48,-0.51,250.6

Field	Data	Units
1	RVDAS Time Tag	
2	\$PUHAW	
3	UVH (E-W, N-S, Heading)	
4	Ship Speed relative to reference layer ¹ velocity ² , East vector	knots
5	Ship Speed relative to reference layer ¹ velocity ² , North vector	knots
6	Ship heading	degrees

¹The reference layer is an average velocity measured in a number of depth “bins”. On the LMG, the bins are eight meters deep and bins 3-10 define the reference layer. Hence, the reference layer is the water column from 16-80 meters beneath the ship.

²The speed output is water velocity relative to the ship’s hull and is therefore opposite of the actual movement of the ship. For example, if the ship’s heading is due north, the North/South reference layer velocity is likely to be negative (southerly).

Igyr - Gyro

02+315:23:59:58.194 \$PASVW,00.1,A*1D

02+315:23:59:58.414 \$IIVHW,287.7,T,,M,,N,,K*71

02+315:23:59:58.616 \$HEHDT,287.7,T*25

02+315:23:59:58.821 \$HEROT,001.6,A*2C

02+315:23:59:58.984 \$HCHDT,,T*07

HDT: True Heading

01+083:00:00:02.893 \$HEHDT,246.3,T*2C

Field	Data	Units
1	RVDAS Time Tag \$HEHDT	
2	Heading XXXXX = ddd.d	degrees
3	T flag for true heading, checksum	

ROT: Rate of Turn

01+083:00:00:03.093 \$HEROT,-006.3,A*03

Field	Data	Units
1	RVDAS Time Tag \$HEROT	
2	Rate of turn	degrees/min
3	Status: A = data valid, checksum	

Isep – Seapath 330 GPS

INZDA: Time and Date Data

10+351:23:59:58.142 \$INZDA,235958.08,17,12,2010,,*78

Field	Data	Units
1	RVDAS Time Tag	
2	\$INZDA Tag	
3	time	hhmmss.ss
3	day	dd
4	month	mm
5	year	yyyy
6	(blank)	
7	Check sum	hexadecimal

INGGA: Global Positioning Fix Data

10+351:23:59:58.142 \$INGGA,235958.07,6118.168460,S,06008.089527,W,1,12,0.7,22.57,M,17.79,M,,*46

Field	Data	Units
1	RVDAS Time Tag	
2	\$INGGA Tag	
3	Time (UTC)	hhmmss.ss
3	Latitude in degrees with decimal minutes	ddmm.mmm
4	{NIS} (latitude is north or south)	
5	Longitude in degrees with decimal minutes	ddmm.mmm
6	{EIW} (longitude is east of west)	
7	GPS quality indicator: 0 = invalid position, 1 = GPS SPS used, 2 = DGPS used, 3 = GPS PPS used, 4 = GPS RTK used, 5 = GPS float RTK used, 6 = dead reckoning	
8	Number of Satellites in use (00-99)	
9	HDOP	
10	Height above ellipsoid in meters	m.mm
11	M	
12	Age of DGPS corrections in seconds	ss.ss
13	M	
14	(blank)	
15	*Check sum	hexadecimal

INRMC: Recommended Minimum Specific GNSS Data

10+351:23:59:58.200 \$INRMC,235958.07,A,6118.168460,S,06008.089527,W,12.8,331.22,171210,11.3,E,A*1C

Field	Data	Units
1	RVDAS Time Tag	
2	\$INRMC Tag	
3	UTC of position	hhmmss.ss
4	Status A = Data Valid, V = Navigation Receiver Warning	
5	Latitude in degrees with decimal minutes	ddmm.mmm
6	North (N) or South (S)	
7	Longitude in degrees with decimal minutes	ddmm.mmm
8	East (E) or West (W)	
9	Speed Over Ground, knots	knots
10	Course Over Ground, degrees True	degrees
11	Date	ddmmyy
12	Magnetic Variation, degrees E/W	degrees

Field	Data	Units
13	Mode Indicator E= Estimated Mode	
14	*Check sum	

PSXN,20: Data Quality

10+351:23:59:58.200 \$PSXN,20,1,2,0,0*38

Field	Data	Units
1	RVDAS Time Tag	
2	\$PSXN Tag	
3	20 (PSXN identifier)	
3	Horizontal position and velocity quality: 0 = normal, 1 = reduced performance, 2 = invalid data	
4	Height and vertical velocity quality: 0 = normal, 1 = reduced performance, 2 = invalid data	
5	Heading quality: 0 = normal, 1 = reduced performance, 2 = invalid data	
6	Roll and pitch quality: 0 = normal, 1 = reduced performance, 2 = invalid data	
7	*Check sum	hexadecimal

PSXN,23: Roll, Pitch, Heading and Heave

10+351:23:59:58.213 \$PSXN,23,0.02,-0.76,330.56,*0B

Field	Data	Units
1	RVDAS Time Tag	
2	\$PSXN Tag	
3	23 (PSXN identifier)	
3	Roll in degrees. Positive with port side up.	d.dd
4	Pitch in degrees. Positive with bow up.	d.dd
5	Heading in degrees true	d.dd
6	Heave in meters. Positive is down	m.mm
7	*Check sum	hexadecimal

Igar - Garmin GPS

GGA: Global Positioning Fix Data

08+034:12:26:06.131 \$GPGGA,122607,6446.4733,S,06403.4455,W,1,11,0.9,-193.4,M,9.7,M,,*5A

Field	Data	Units
1	RVDAS Time Tag	
2	\$GPGGA Tag	
3	UTC of position	hhmmss.ss
4	Latitude in degrees with decimal minutes	ddmm.mmm
5	North (N) or South (S)	
6	Longitude in degrees with decimal minutes	ddmm.mmm
7	East (E) or West (W)	
8	GPS quality (1=GPS 2=DGPS)	
9	Number of GPS satellites used	
10	Horizontal dilution of precision (HDOP)	
11	Antenna height above/below mean-sea-level (geoid)	meters
12	Units for antenna height (M = Meters)	
13	Geoidal Separation ¹	
14	Units for Geoidal Separation (M = Meters)	meters
15	Age of differential GPS data, number of seconds since last SC104 Type 1 or 9	
16	Differential reference station ID	

¹Geoidal Separation: the difference between the WGS-84 earth ellipsoid and mean-sea-level (geoid). A negative value represents mean-sea-level below ellipsoid.

GLL: Geographic Position – Latitude/Longitude

08+034:12:26:06.211 \$GPGLL,6446.4733,S,06403.4455,W,122607,A

Field	Data	Units
1	RVDAS Time Tag	
2	\$GPGLL Tag	
3	Latitude	ddmm.mmm
4	North (N) or South (S)	
5	Longitude	ddmm.mmm
6	East (E) or West (W)	
7	UTC of position	hhmmss.ss
8	Status: A = Data Valid, V =Data Not Valid	

VTG: Track Made Good and Speed over Ground

08+034:12:26:06.211 \$GPVTG,167,T,151,M,000.0,N,0000.0,K

Field	Data	Units
1	RVDAS Time Tag	
2	\$GPVTG Tag	
3	Track, degrees true	degrees
3	T flag for True	
4	Track, degrees magnetic	degrees
5	M flag for Magnetic	
6	Speed over Ground	knots
7	N flag for Knots	
8	Speed over Ground	kmhr
9	K flag for km/hr	

tgps – Trimble Centurion GPS

GGA: Global Positioning Fix Data

08+034:12:26:06.131 \$GPGGA,122607,6446.4733,S,06403.4455,W,1,11,0.9,-193.4,M,9.7,M,,*5A

Field	Data	Units
1	RVDAS Time Tag	
2	\$GPGGA Tag	
3	UTC of position	hhmmss.ss
4	Latitude in degrees with decimal minutes	ddmm.mmm
5	North (N) or South (S)	
6	Longitude in degrees with decimal minutes	ddmm.mmm
7	East (E) or West (W)	
8	GPS quality (1=GPS 2=DGPS)	
9	Number of GPS satellites used	
10	Horizontal dilution of precision (HDOP)	
11	Antenna height above/below mean-sea-level (geoid)	meters
12	Units for antenna height (M = Meters)	
13	Geoidal Separation ¹	
14	Units for Geoidal Separation (M = Meters)	meters
15	Age of differential GPS data, number of seconds since last SC104 Type 1 or 9	
16	Differential reference station ID	

¹Geoidal Separation: the difference between the WGS-84 earth ellipsoid and mean-sea-level (geoid). A negative value represents mean-sea-level below ellipsoid.

GLL: Geographic Position – Latitude/Longitude

08+034:12:26:06.211 \$GPGLL,6446.4733,S,06403.4455,W,122607,A

Field	Data	Units
1	RVDAS Time Tag	
2	\$GPGLL Tag	
3	Latitude	ddmm.mmm
4	North (N) or South (S)	
5	Longitude	ddmm.mmm
6	East (E) or West (W)	
7	UTC of position	hhmmss.ss
8	Status: A = Data Valid, V =Data Not Valid	

VTG: Track Made Good and Speed over Ground

08+034:12:26:06.211 \$GPVTG,167,T,151,M,000.0,N,0000.0,K

Field	Data	Units
1	RVDAS Time Tag	
2	\$GPVTG Tag	
3	Track, degrees true	degrees
3	T flag for True	
4	Track, degrees magnetic	degrees
5	M flag for Magnetic	
6	Speed over Ground	knots
7	N flag for Knots	
8	Speed over Ground	kmhr
9	K flag for km/hr	

RMC: Recommended Minimum Specific GNSS Data

08+034:13:17:26.627 \$GPRMC,131726.605,A,6446.4820,S,06403.3075,W,000.0,094.4,030208,16.3,E

Field	Data	Units
1	RVDAS Time Tag	
2	\$GPRMC Tag	
3	UTC of position	hhmmss.ss
4	Status A = Data Valid, V = Navigation Receiver Warning	
5	Latitude in degrees with decimal minutes	ddmm.mmm
6	North (N) or South (S)	
7	Longitude in degrees with decimal minutes	ddmm.mmm
8	East (E) or West (W)	
9	Speed Over Ground, knots	knots
10	Course Over Ground, degrees True	degrees
11	Date	ddmmyy
12	Magnetic Variation, degrees E/W	degrees
13	Mode Indicator E= Estimated Mode	

LMG Sensors

Shipboard Sensors

Sensor	Description	Serial #	Cal. Date	Status
Port Anemometer	Gill Ultrasonic Wind Observer II	840018	N/A	Collected
Starboard Anemometer	Gill Ultrasonic Wind Observer II	71738	N/A	Collected
Barometer	R.M. Young 61201	BP01150	03-Jun-2011	Collected
Humidity/Wet Temp	RM Young 41372LC	06133	03-Dec-2010	Collected
PAR for Mast	Biosph. Inst. QSR-240P	6393	31-Aug-2010	Collected
PIR	Eppley PIR	28903F3	13-Oct-2010	Collected
PSP	Eppley PSP	28933F3	9-Sept-2010	Collected
GUV (Mast)	Biosph. Inst. GUV-2511	25110805126	18-May-2011	Collected
Transmissometer	WET Labs C-Star 25 cm deep	CST-830DR	04-Nov-2011	Collected
MicroTSG (Primary)	Sea-Bird 45	390	20-Oct-2012	Collected
MicroTSG (Secondary)	Sea-Bird 45	243	21-Jul-2010	Collected
Digital Remote Temp	Sea-Bird 38	262	22-Jul-2010	Collected
Fluorometer	WET Labs ECO-FL	FLRTD-398	07-Sep-11	Collected

Underway Calibration Sheets

Note: Embedded pdf files can be opened with a right-click, Acrobat Document Object, Open

Remote Temperature

SEA-BIRD ELECTRONICS, INC.

13431 NE 20th Street, Bellevue, Washington, 98005-2010 USA

Phone: (425) 643 - 9866 Fax (425) 643 - 9954 Email: seabird@seabird.com

SENSOR SERIAL NUMBER: 0262
CALIBRATION DATE: 22-Jul-10

SBE 38 TEMPERATURE CALIBRATION DATA
ITS-90 TEMPERATURE SCALE

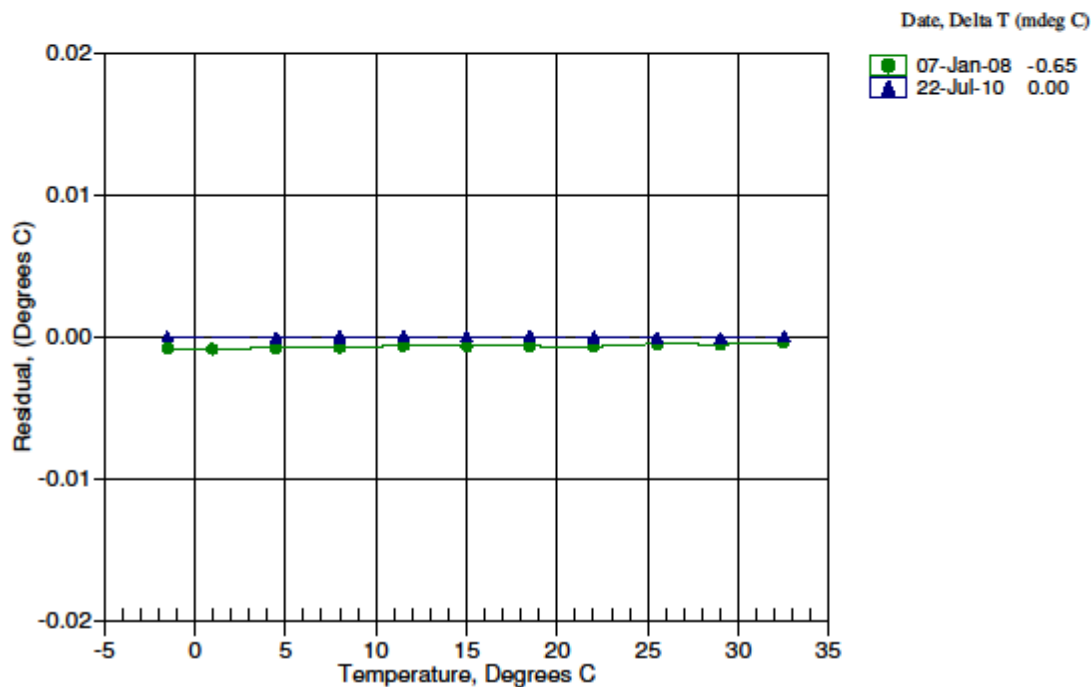
ITS-90 COEFFICIENTS

a0 = -3.222115e-005
a1 = 2.825818e-004
a2 = -2.780818e-006
a3 = 1.692821e-007

BATH TEMP (ITS-90)	INSTRUMENT OUTPUT	INST TEMP (ITS-90)	RESIDUAL (ITS-90)
-1.50000	702866.8	-1.49998	0.00002
4.50000	538524.7	4.49996	-0.00004
8.00000	463074.9	7.99997	-0.00003
11.50000	399447.6	11.50003	0.00003
15.00000	345616.6	15.00002	0.00002
18.50000	299927.6	18.50005	0.00005
22.00000	261030.3	22.00001	0.00001
25.50000	227815.0	25.49995	-0.00005
29.00000	199368.1	28.99994	-0.00006
32.50000	174935.4	32.50005	0.00005

Temperature ITS-90 = $1/[a_0 + a_1[\ln(n)] + a_2[\ln^2(n)] + a_3[\ln^3(n)]] - 273.15$ (°C)

Residual = instrument temperature - bath temperature



Thermosalinograph (temp) – Primary

7

Sea-Bird Electronics, Inc.

13431 NE 20th Street, Bellevue, WA 98005-2010 USA

Phone: (+1) 425 643-9856 Fax: (+1) 425-643-9954 Email: seabird@seabird.com

SENSOR SERIAL NUMBER: 1036
CALIBRATION DATE: 20-Oct-11SVP45 TEMPERATURE CALIBRATION DATA
ITS-90 TEMPERATURE SCALE

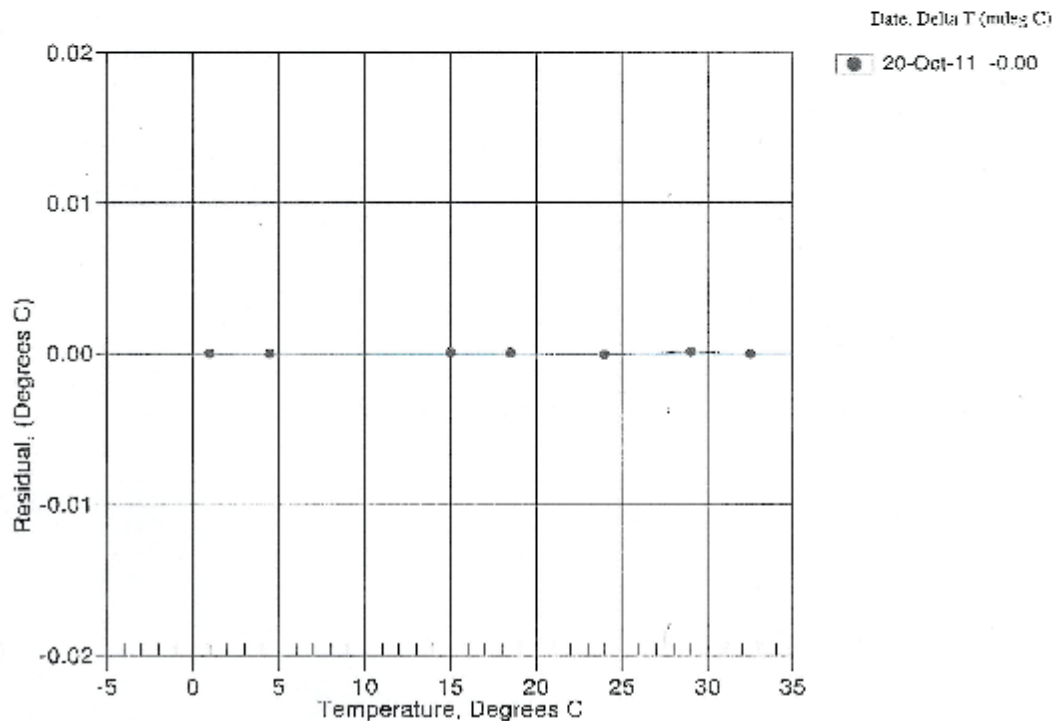
ITS 90 COEFFICIENTS

$a_0 = 3.347593e-006$
 $a_1 = 2.337120e-004$
 $a_2 = -5.178238e-006$
 $a_3 = 1.712408e-007$

BATH TEMP (ITS-90)	INSTRUMENT OUTPUT	INST TEMP (ITS 90)	RESIDUAL (ITS-90)
1.0000	652265.1	1.0000	0.0000
4.5000	582231.6	4.5000	-0.0000
14.9999	358376.3	14.9999	0.0000
18.4999	303907.3	18.4999	0.0000
24.0000	247911.9	24.0000	-0.0001
29.0000	203681.3	29.0001	0.0001
32.5000	174106.3	32.5000	-0.0000

$$\text{Temperature ITS-90} = [a_0 + a_1(t(n)) + a_2(t(n))^2 + a_3(t(n))^3] - 273.15 \text{ (}^\circ\text{C)}$$

Residual = instrument temperature - bath temperature



Thermosalinograph (conductivity) - Primary

8

Sea-Bird Electronics, Inc.

13431 NE 20th Street, Bellevue, WA 98005-2010 USA

Phone: (+1) 425-643-9868 Fax (+1) 425-643-9054 Email: seabird@seabird.com

SENSOR SERIAL NUMBER: 0990
CALIBRATION DATE: 20-Oct-11SBE 45 CONDUCTIVITY CALIBRATION DATA
PSS 1978: C(35,15,0) = 4.2914 Siemens/meter

COEFFICIENTS:

g = -9.852963e-001

h = 1.457244e-001

i = -9.951034e-004

j = 3.25707e-003

CPROD = -9.5300e-006

CTEMP = 5.2500e-006

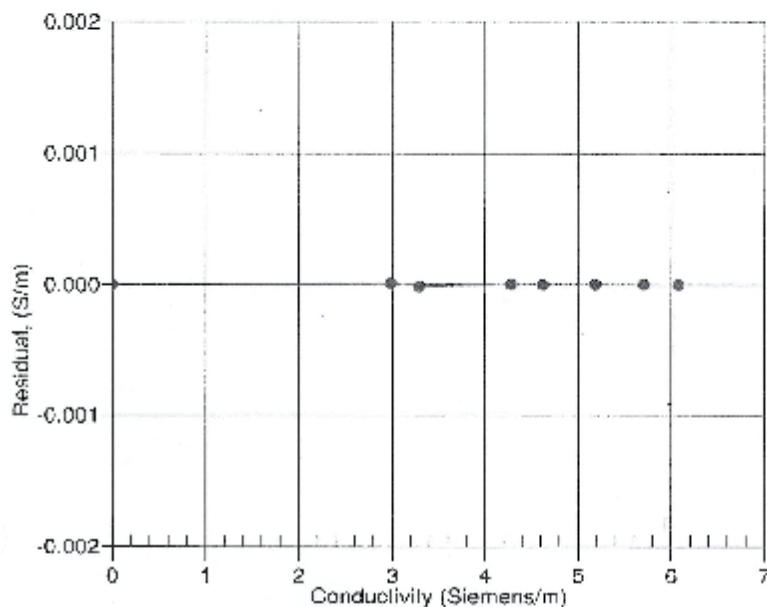
WBCTC = 2.5724e-007

BATH TEMP (TSS-50)	BATH SAL (PSU)	BATH COND (Siemens/m)	INST FREQ (MHz)	INST COND (Siemens/m)	RESIDUAL (Siemens/m)
23.0000	34.0000	3.30000	2616.64	0.00000	0.00000
1.0000	34.0210	2.96406	5239.98	2.98407	0.00001
4.5000	34.0005	3.29188	5438.78	3.28187	-0.00001
14.9999	34.0066	4.27800	6009.77	4.27600	0.00000
16.4999	34.0467	4.62186	6221.63	4.62196	0.00000
24.0000	34.0354	5.18113	6525.11	5.18105	0.00000
29.0000	34.0277	5.70337	6794.28	5.70336	0.00000
32.5000	34.0211	5.07873	6979.83	6.07672	0.00000

 $f = \text{INST FREQ} \wedge \sin(1.0 + \text{WBCTC} \wedge Q / 1000.0)$ Conductivity = $(g + hT^2 - iT^3 + jT^4) / (1 + \delta T + \epsilon p)$ Siemens/meterT = temperature[°C]; p = pressure[decibars]; $\delta = \text{CTEMP}$; $\epsilon = \text{CPROD}$

Residual = instrument conductivity - bath conductivity

Data Slope Correction



20-Oct-11 1.0000000

Thermosalinograph (Temp) – Secondary

SEA-BIRD ELECTRONICS, INC.

13431 NE 20th Street, Bellevue, Washington, 98005-2010 USA

Phone: (425) 643 - 9866 Fax (425) 643 - 9954 Email: seabird@seabird.com

SENSOR SERIAL NUMBER: 0243
 CALIBRATION DATE: 21-Jul-10

SBE 45 TEMPERATURE CALIBRATION DATA
 ITS-90 TEMPERATURE SCALE

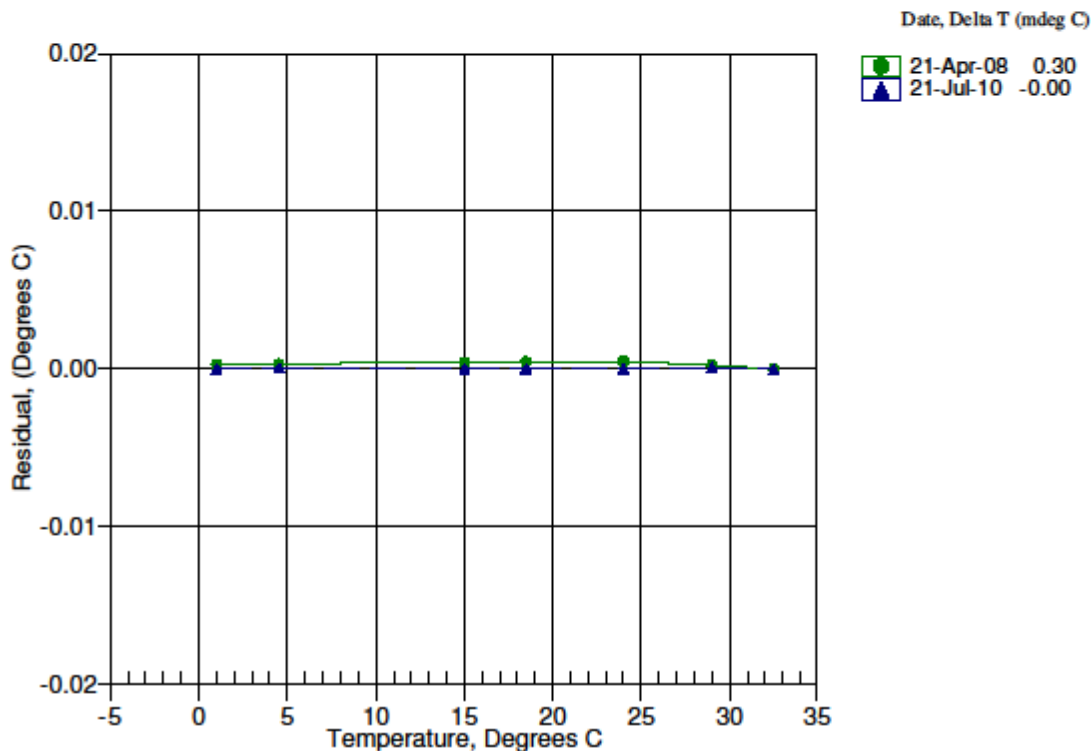
ITS-90 COEFFICIENTS

a0 = 3.707259e-005
 a1 = 2.694215e-004
 a2 = -2.115219e-006
 a3 = 1.410851e-007

BATH TEMP (ITS-90)	INSTRUMENT OUTPUT	INST TEMP (ITS-90)	RESIDUAL (ITS-90)
1.0000	759624.8	1.0000	-0.0000
4.4999	647951.1	4.4999	0.0000
15.0000	410156.6	15.0000	-0.0000
18.5000	354385.3	18.5000	0.0000
23.9999	283361.9	23.9999	-0.0000
29.0000	232645.5	29.0001	0.0001
32.5000	203328.3	32.5000	-0.0000

Temperature ITS-90 = $1/[a_0 + a_1[\ln(n)] + a_2[\ln^2(n)] + a_3[\ln^3(n)]] - 273.15$ (°C)

Residual = instrument temperature - bath temperature



Thermosalinograph (Conductivity) – Secondary

SEA-BIRD ELECTRONICS, INC.

13431 NE 20th Street, Bellevue, Washington, 98005-2010 USA

Phone: (425) 643 - 9866 Fax (425) 643 - 9954 Email: seabird@seabird.com

SENSOR SERIAL NUMBER: 0243
CALIBRATION DATE: 21-Jul-10SBE 45 CONDUCTIVITY CALIBRATION DATA
PSS 1978: C(35,15,0) = 4.2914 Siemens/meter

COEFFICIENTS:

g = -1.008835e+000
h = 1.573683e-001
i = -3.239483e-004
j = 5.119501e-005CPcor = -9.5700e-008
CTcor = 3.2500e-006
WBOTC = 1.1173e-006

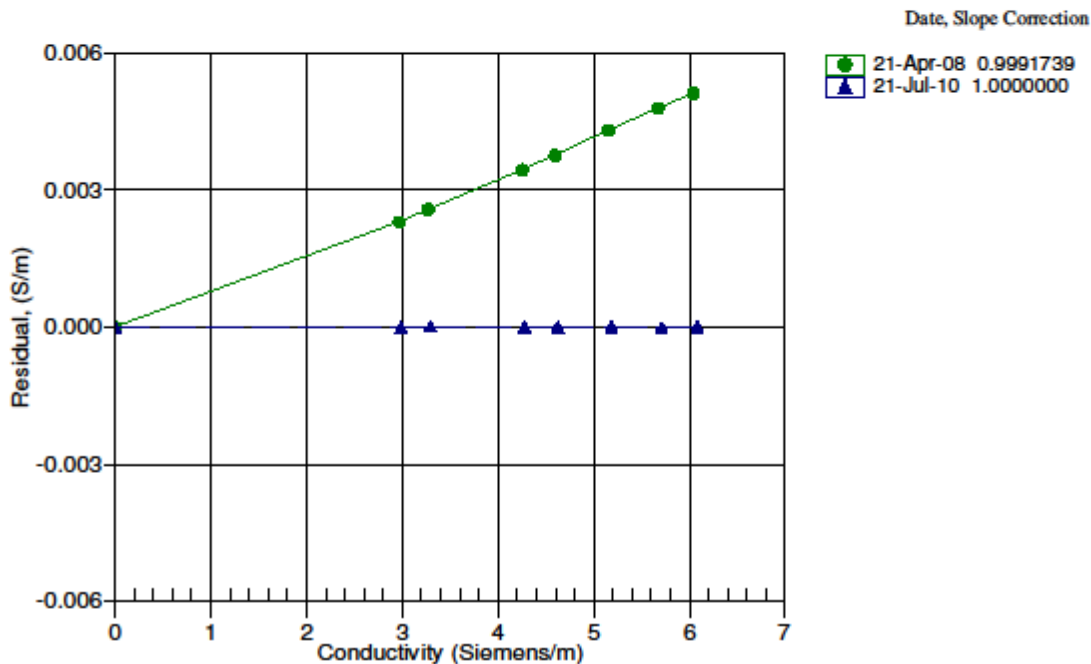
BATH TEMP (ITS-90)	BATH SAL (PSU)	BATH COND (Siemens/m)	INST FREQ (Hz)	INST COND (Siemens/m)	RESIDUAL (Siemens/m)
22.0000	0.0000	0.00000	2535.87	0.00000	0.00000
1.0000	34.9328	2.98497	5043.04	2.98496	-0.00001
4.4999	34.9132	3.29295	5233.27	3.29297	0.00001
15.0000	34.8700	4.27750	5798.83	4.27750	-0.00000
18.5000	34.8603	4.62357	5984.66	4.62357	-0.00000
23.9999	34.8493	5.18298	6273.11	5.18299	0.00001
29.0000	34.8428	5.70617	6531.01	5.70615	-0.00002
32.5000	34.8381	6.07936	6708.74	6.07937	0.00001

$$f = \text{INST FREQ} * \sqrt{1.0 + \text{WBOTC} * t} / 1000.0$$

$$\text{Conductivity} = (g + hf^2 + if^3 + jf^4) / (1 + \delta t + \epsilon p) \text{ Siemens/meter}$$

t = temperature[°C]; p = pressure(decibars); δ = CTcor; ϵ = CPcor;

Residual = instrument conductivity - bath conductivity



Transmissometer

PO Box 518
620 Applegate St.
Philomath, OR 97370



(541) 829-5650
Fax (541) 829-5277
www.wetlabs.com

C-Star Calibration

Date	November 4, 2011	S/N#	CST-830DR	Pathlength	25 cm
Analog output					
V_d	0.059 V				
V_{air}	4.868 V				
V_{ref}	4.713 V				
Temperature of calibration water					23.5 °C
Ambient temperature during calibration					21.6 °C

Relationship of transmittance (Tr) to beam attenuation coefficient (c), and pathlength (x , in meters): $Tr = e^{-cx}$

To determine beam transmittance: $Tr = (V_{sig} - V_{dark}) / (V_{ref} - V_{dark})$

To determine beam attenuation coefficient: $c = -1/x * \ln(Tr)$

V_d Meter output with the beam blocked. This is the offset.

V_{air} Meter output in air with a clear beam path.

V_{ref} Meter output with clean water in the path.

Temperature of calibration water: temperature of clean water used to obtain V_{ref} .

Ambient temperature: meter temperature in air during the calibration.

V_{sig} Measured signal output of meter.

Revision M

7/26/11

Fluorometer

PO Box 518
620 Applegate St.
Philomath, OR 97370



(541) 929-5650
Fax (541) 929-5277
www.wetlabs.com

ECO Chlorophyll Fluorometer Characterization Sheet

Date: 9/7/2011

S/N: FLRTD-398

Chlorophyll concentration expressed in µg/l can be derived using the equation:

$$\text{CHL } (\mu\text{g/l}) = \text{Scale Factor} * (\text{Output} - \text{Dark Counts})$$

	Analog Range 1	Analog Range 2	Analog Range 4 (default)	Digital
Dark Counts	0.097	0.053	0.031 V	70 counts
Scale Factor (SF)	6	13	25 µg/VV	0.0076 µg/l/count
Maximum Output	4.96	4.96	4.96 V	16328 counts
Resolution	1.0	1.0	1.0 mV	1.0 counts

Ambient temperature during characterization

22.3 °C

Analog Range: 1 (most sensitive, 0–4,000 counts), 2 (midrange, 0–8,000 counts), 4 (entire range, 0–16,000 counts).

Dark Counts: Signal output of the meter in clean water with black tape over detector.

SF: Determined using the following equation: $SF = x \div (\text{output} - \text{dark counts})$, where x is the concentration of the solution used during instrument characterization. SF is used to derive instrument output concentration from the raw signal output of the fluorometer.

Maximum Output: Maximum signal output the fluorometer is capable of.

Resolution: Standard deviation of 1 minute of collected data.

The relationship between fluorescence and chlorophyll-a concentrations *in-situ* is highly variable. The scale factor listed on this document was determined using a mono-culture of phytoplankton (*Thalassiosira weissflogii*). The population was assumed to be reasonably healthy and the concentration was determined by using the absorption method. To accurately determine chlorophyll concentration using a fluorometer, you must perform secondary measurements on the populations of interest. This is typically done using extraction-based measurement techniques on discrete samples. For additional information on determining chlorophyll concentration see "Standard Methods for the Examination of Water and Wastewater" part 10200 H, published jointly by the American Public Health Association, American Water Works Association, and the Water Environment Federation.

FLRTD-398.xls

Revision J

3/17/08

PSP**THE EPPLEY LABORATORY, INC.**12 Sheffield Avenue, PO Box 419, Newport, Rhode Island USA 02840
Phone: 401 847.1020 Fax: 401 847.1031 Email: info@eppleylab.com**STANDARDIZATION OF
EPPLEY PRECISION SPECTRAL PYRANOMETER
Model PSP**

Serial Number: 28933F3

Resistance: 686 Ω at 23°C

Temperature Compensation Range: -20° to +40°C

This radiometer has been compared with Standard Precision Spectral Pyranometer, Serial Number 21331F3 in Eppley's Integrating Hemisphere under radiation intensities of approximately 700 watts meter⁻² (roughly one half a solar constant).

As a result of a series of comparisons, it has been found to have a sensitivity of:

$$8.01 \times 10^{-5} \text{ volts/watts meter}^{-2}$$

The calculation of this constant is based on the fact that the relationship between radiation intensity and emf is rectilinear to intensities of 1400 watts meter⁻². This radiometer is linear to within 0.5% up to this intensity.

The calibration of this instrument is traceable to standard self-calibrating cavity pyrheliometers in terms of the Systems Internationale des Unites (SI units), which participated in the Tenth International Pyrheliometric Comparisons (IPC X) at Davos, Switzerland in September-October 2005.

Eppley recommends a minimum calibration cycle of five (5) years but encourages annual calibrations for highest measurement accuracy. Unless otherwise stated in the remarks section below or on the Sales Order, the results are "AS FOUND / AS LEFT".

Useful conversion facts: 1 cal cm⁻² min⁻¹ = 697.3 watts meter⁻²
1 BTU/ft²-hr⁻¹ = 3.153 watts meter⁻²

Shipped to: Raytheon Polar Services
National Science Foundation
Port Hueneme, CA

Date of Test: September 9, 2010

In Charge of Test:

Delia L. Huntley

S.O. Number: 62700
Date: September 20, 2010

Reviewed by:

Thomas J. Hub

Remarks:

PIR

**THE EPPLEY LABORATORY, INC.**

12 Sheffield Avenue, PO Box 419, Newport, Rhode Island USA 02840
Phone: 401.847.1020 Fax: 401.847.1031 Email: info@eppleylab.com

**STANDARDIZATION OF
EPPLEY PRECISION INFRARED RADIOMETER
Model PIR**

Serial Number: 28903F3

Resistance: 674 Ω at 23°C

Temperature Compensation Range: -20° to + 40°C

This pyrgeometer has been compared against Eppley's Blackbody Calibration System under radiation intensities of approximately 200 watts meter⁻² and an average ambient temperature of 23°C as measured by Standard Omega Temperature Probe, RTD#1.

As a result of a series of comparisons, it has been found to have a sensitivity of:

$$3.60 \times 10^{-6} \text{ volts/watts meter}^{-2}$$

The calculation of this constant is based on the fact that the relationship between radiation intensity and emf is rectilinear to intensities of 700 watts meter⁻². This radiometer is linear to within $\pm 1.0\%$ up to this intensity.

The calibration of this instrument is traceable to the International Practical Temperature Scale (IPTS) through a precision low-temperature blackbody.

Eppley recommends a minimum calibration cycle of five (5) years but encourages annual calibrations for highest measurement accuracy. Unless otherwise stated in the remarks section below or on the Sales Order, the results are "AS FOUND / AS LEFT".

Shipped to: Raytheon Polar Services
Port Hueneme, CA

S.O. Number: 62716
Date: October 13, 2010

Date of Test: October 13, 2010

In Charge of Test: *Debra L. Gentry*

Reviewed by: *Thomas D. Kuhn*

Remarks: Instrument has new dome and element repainted. No "AS FOUND" data available.

PAR

Biospherical Instruments Inc.

CALIBRATION CERTIFICATE

Calibration Date 8/31/2010
 Model Number QSR240
 Serial Number 6393
 Operator TPC
 Standard Lamp GS-1024(8/25/08)
 Probe Excitation Voltage Range: 6 to 10 VDC(+)

Output Polarity: Positive

Probe Conditions at Calibration (in air):

Calibration Voltage: 6 VDC(+)

Probe Current: 1.3 mA

Probe Output Voltage:

Probe Illuminated 95.9 mV

Probe Dark 0.3 mV

Probe Net Response 95.6 mV

RG780 0.4 mV

Corrected Lamp Output:

Output in Air (same condition as calibration):

9.271E+15 quanta/cm²sec

0.01540 μE/cm²sec

Calibration Scale Factor:

(To calculate irradiance, divide the net voltage reading in Volts by this value.)

Dry: 1.0310E-17 V/(quanta/cm²sec)

6.2087E+00 V/(μE/cm²sec)

Notes:

1. Annual calibration is recommended.
2. Calibration is performed using a Standard of Spectral Irradiance traceable to the National Institute of Standards and Technology (NIST).
3. The collector should be cleaned frequently with alcohol.
4. Calibration was performed with customer cable, when available.

QSR240R 03/24/05

Temperature/Relative Humidity



R.M. Young Company
2801 Aero Park Drive
Livonia City, Michigan 48150 USA



CALIBRATION REPORT Temperature Sensor

Customer: Raytheon Technical Services Company LLC

Test Number: 00641

Customer ID: RR53870-01

Test Date: 3 December 2010

Sales Order: 1597

Test Sensor:

Model: 41372LC

Serial Number: TS06133

Description: Temperature/Relative Humidity Sensor

Report of calibration comparison of test temperature sensor with National Institute of Standards and Technology traceable standard thermometers at three temperatures in the R.M. Young Company controlled temperature calibration bath facilities. Calibration accuracy $\pm 0.1^\circ$ Celsius.

Bath Temperature (degrees C)	Current Output (milliamps)	Indicated (1) Temperature (degrees C)
-50.04	3.990	-50.06
0.04	12.008	0.05
50.00	20.000	50.00

(1) Calculated from current output

All reference equipment used in this calibration procedure have been tested by comparison to traceable standards certified by the National Institute of Standards and Technology.

Reference Instrument	Serial #	NIST Test Reference
Brooklyn Thermometer Model 43-FC	8005-B	204365
Brooklyn Thermometer Model 22332-D5-FC	2671	249763
Brooklyn Thermometer Model 2X400-D7-FC	7712	228060
Keithley Multimeter Model 191	1532	234027

Tested By:

METEOROLOGICAL INSTRUMENTS
Tel: 231-918-3950 Fax: 231-949-4772 Email: me...@youngusa.com Web: youngusa.com

Barometer

R.M. Young Company
180 Aero Park Drive
Troy, Michigan 48066 USA

CALIBRATION REPORT Barometric Pressure Sensor

Customer: *Raytheon Technical Services Company LLC*

Test Number: 1803-01B
Test Date: 3 June 2011

Customer PO: RR58987-01
Sales Order: 1959

Test Sensor:	
Model: 61201	Serial Number: BP01150
Description: Barometric Pressure Sensor	

Report of calibration comparison of test barometric pressure sensor with National Institute of Standards and Technology traceable standard pressure calibrator at five pressures in the R.M. Young Company controlled pressure facility. Calibration accuracy – 1.0 hPa.

Reference Pressure (hPa)	Voltage Output (millivolts)	Indicated (1) Pressure (hPa)
800.0	0	800.0
875.0	1251	875.1
950.0	2501	950.1
1025.0	3750	1025.0
1100.0	4998	1099.9

(1) Calculated from voltage output

All reference equipment used in this calibration procedure have been tested by comparison to traceable standards certified by the National Institute of Standards and Technology.

Reference Instrument
Druck Pressure Controller Model DPI515
Fluke Multimeter Model 9080A

Serial # NIST Test Reference
51500497 UKAS Lab 0221
4865407 234027

Tested By: *E. Chennery*

METEOROLOGICAL INSTRUMENTS
Tel: 231-946-3900 Fax: 231-946-4772 Email: rmlsales@youngusa.com Website: youngusa.com
ISO 9001:2005 CERTIFIED

GUV



Biospherical Instruments Inc.

GUV-2511 Calibration Certificate

System Serial Number		25110805126		Date of Calibration		5/18/2011					
Calibration database		25110805126v6.mdb		Date of Certificate		5/18/2011					
DASSN		0109		Standard of Spectral Irradiance		GS-1024/8/28/08)					
Microprocessor Tag Number		2		Operator		TC					
Monochromatic Channels		Address	Wavelength [nm]	Responsivity [amps per $\mu\text{W}/\text{cm}^2\text{-nm}$]	ScaleSmall [Volts per $\mu\text{W}/\text{cm}^2\text{-nm}$]	ScaleMedium [Volts per $\mu\text{W}/\text{cm}^2\text{-nm}$]	ScaleLarge [Volts per $\mu\text{W}/\text{cm}^2\text{-nm}$]	OffsetSmall [Volts]	OffsetMedium [mVolts]	OffsetLarge [Volts]	Measurement Units
Ed0305		2	305	4.6890E-11	4.8239E-05	1.4095E-03	4.2917E-01	-6.9000E-05	-5.7000E-05	1.2390E-03	$\mu\text{W}/\text{cm}^2\text{-nm}$
Ed0313		6	313	2.3710E-10	2.4178E-05	7.0677E-03	2.4874E+00	-1.1400E-04	-1.1000E-04	1.1370E-03	$\mu\text{W}/\text{cm}^2\text{-nm}$
Ed0320		8	320	2.6470E-10	2.6842E-05	7.9183E-03	2.7409E+00	-2.9100E-04	-2.9500E-04	4.6900E-04	$\mu\text{W}/\text{cm}^2\text{-nm}$
Ed0340		10	340	1.9970E-10	2.0334E-05	5.9605E-03	2.1066E+00	-1.0600E-04	-1.0700E-04	1.1780E-03	$\mu\text{W}/\text{cm}^2\text{-nm}$
Ed0380		12	380	7.3830E-11	7.8232E-05	2.1963E-03	7.7065E-01	-3.8400E-04	-3.8500E-04	3.6900E-04	$\mu\text{W}/\text{cm}^2\text{-nm}$
Ed0395		13	395	3.0960E-10	3.1661E-05	9.2971E-03	3.2340E+00	5.4000E-05	5.2000E-05	1.5050E-03	$\mu\text{W}/\text{cm}^2\text{-nm}$
Broadband Channels		Address	Wavelength [nm]	Responsivity [amps per $\mu\text{E}/\text{cm}^2\text{-s}$]	ScaleSmall [Volts per $\mu\text{E}/\text{cm}^2\text{-s}$]	ScaleMedium [Volts per $\mu\text{E}/\text{cm}^2\text{-s}$]	ScaleLarge [Volts per $\mu\text{E}/\text{cm}^2\text{-s}$]	OffsetSmall [Volts]	OffsetMedium [mVolts]	OffsetLarge [Volts]	Measurement Units
Ed0PAR		18	400-700	1.65820E-05	1.7232E+00	5.0483E+02	1.7874E+05	-1.7000E-05	-1.9000E-05	1.4830E-03	$\mu\text{E}/\text{cm}^2\text{-sec}$
Auxiliary Channels		Address	Wavelength	Responsivity	ScaleS	ScaleM	ScaleL	OffsetS	OffsetM	OffsetL	Measurement Units
Ed0Temp		22	0	1	0.01	0.01	0.01	0	0	0	$^{\circ}\text{C}$
Ed0Win		27	0	1	-0.25	-0.25	-0.25	0	0	0	V

© Biospherical Instruments Inc., 5340 Riley Street, San Diego, California 92110 USA. Contact support@biospherical.com for more information.

Calibration Data – Do Not Destroy

page 2 of 2

Acquisition and Processing Information

Processing Specifics

Refer to the InstCoef.txt file along with the specific instrument calibration sheets, both located in the Cal/ directory of the data distribution, for information on how the RVDAS data was collected and processed.

Errors and Events

This section lists all significant events and known problems with acquisition during this cruise including instrument failures, data acquisition system failures, and other factors affecting this data set.

The PCO2 system was turned off for the troubleshooting and repairs of the equilibrator pump.

Day Of Year	Time (GMT)	Event	Location
159	14:31	Started data acquisition	@68W, clear Chilean EEZ
159	15:00	Rebooted ADCP computer (no connection to USB serial MUX)	
160	11:32	Bottom Tracking OFF ADCP's	Dropping off shelf
162	12:14	Bottom Tracking ON ADCP's	Arrive Antarctic shelf
163	14:27	Suspended data collection of seawater and acoustics	@Palmer Station
165	13:34	Resumed seawater/acoustics	Depart Palmer Station
168	13:40	Suspended data collection of seawater and acoustics	@Palmer Station
173	15:35	Resumed seawater/acoustics	Depart Palmer Station
175	04:28	Rebooted ADCP (lost serial ports)	
177	12:28	Ended data acquisition for cruise LMG1206	@68W, enter Chilean EEZ